

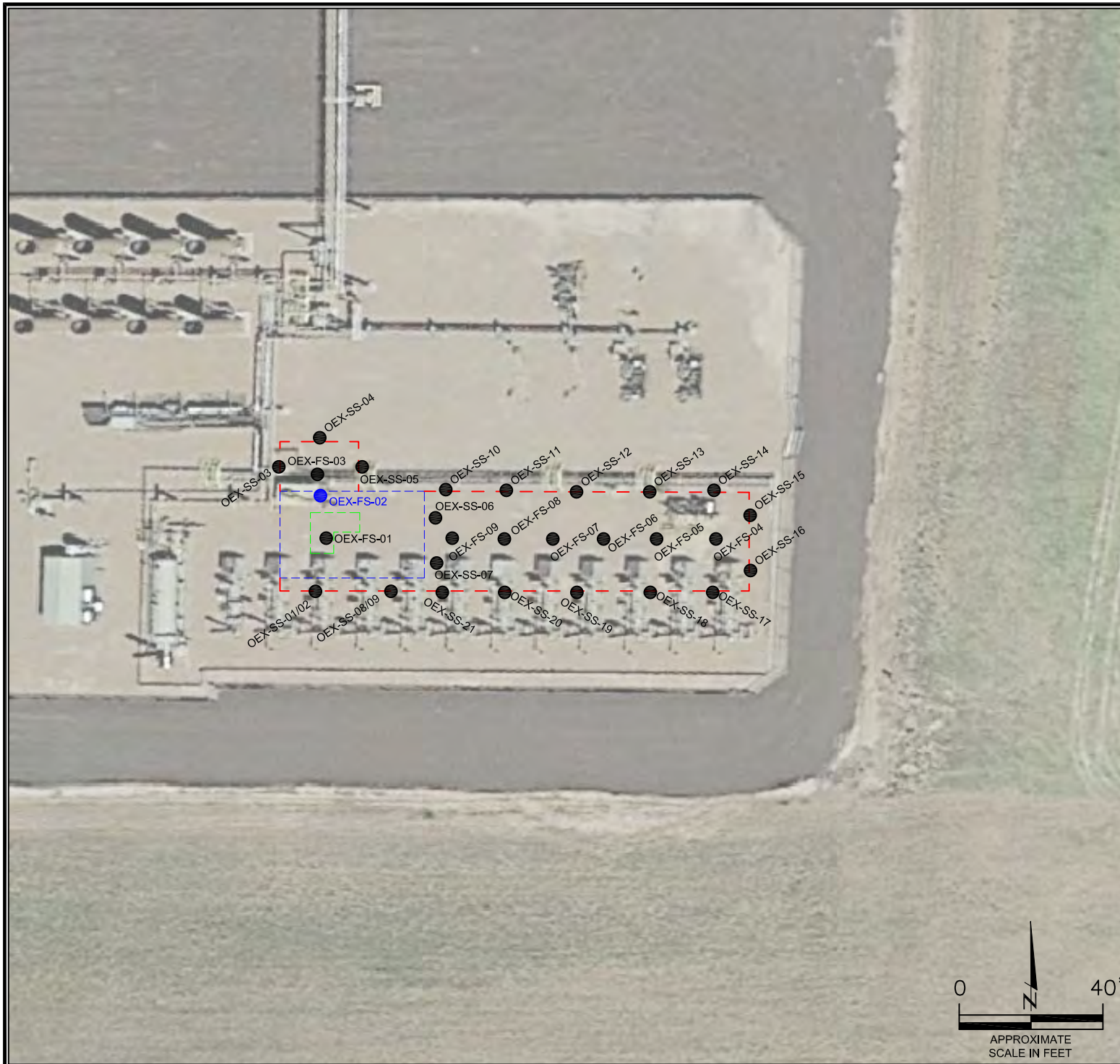


FIGURES

Figure 1: Over-Excavation Soil Sample Location Map

Figure 2: Over-Excavation pH Map

Figure 3: Residual Impact Soil Analytical Map



LEGEND

- INITIAL EXCAVATION BOUNDARIES (09/08/23)
- APPROXIMATE EXCAVATION BOUNDARIES (12/01/23)
- APPROXIMATE OVER-EXCAVATION BOUNDARIES (AS OF 12/29/23)
- SOIL SAMPLE LOCATIONS FIELD-SCREENED, ONLY
- SOIL SAMPLE LOCATIONS SUBMITTED FOR LABORATORY ANALYSIS

OVER-EXCAVATION SOIL SAMPLE LOCATION MAP

SAM 25H-M166
OIL RELEASE
40.019685 / -104.734069
NW¼ SW¼ SEC.25 T1N R66W 6PM
WELD COUNTY, COLORADO
LOCATION ID 453474
REMEDATION # 33283

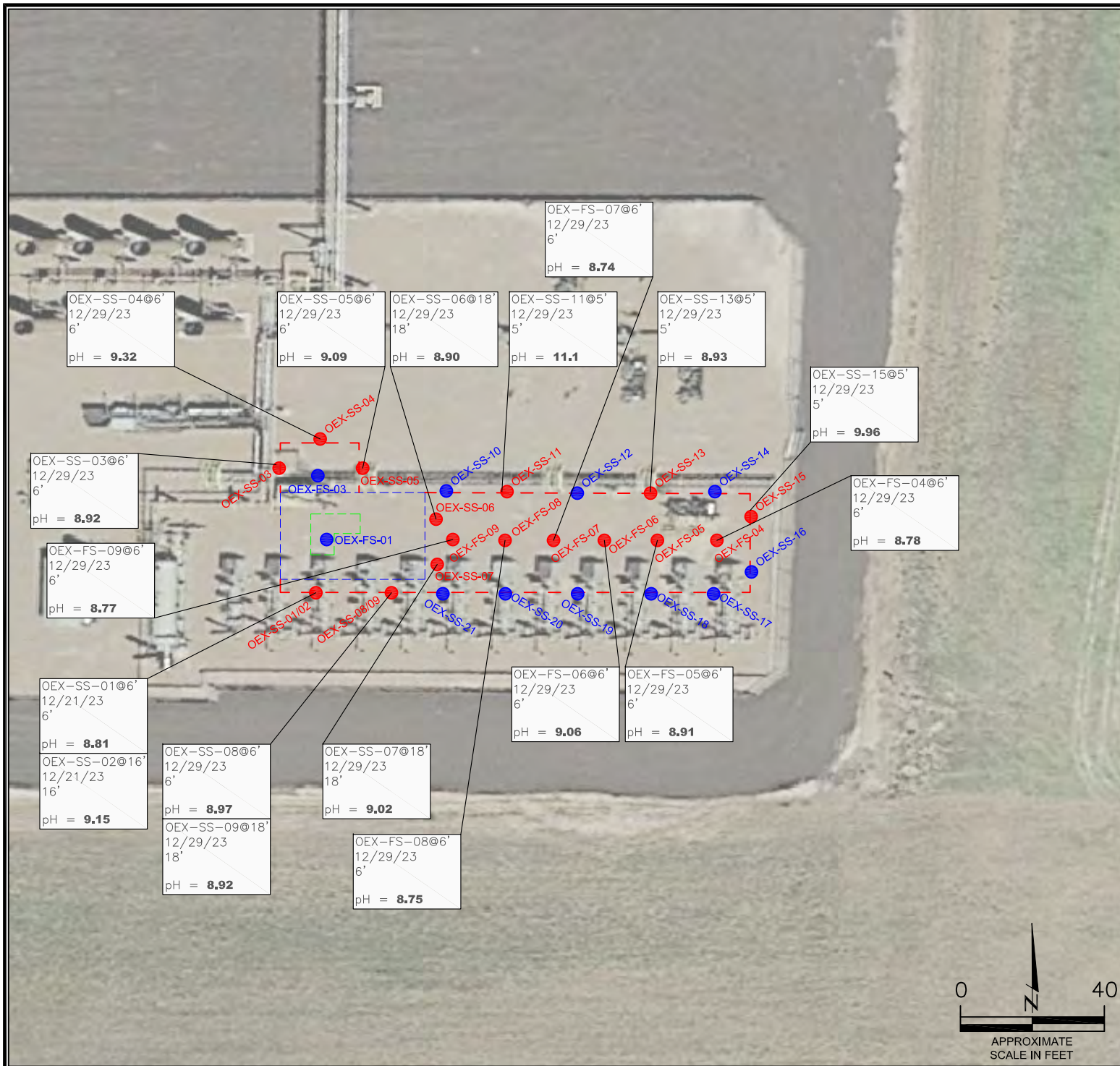
DATE:
01/31/24

DRAWN BY:
AMN

FIG.
NO. 1



EAGLE
ENVIRONMENTAL
CONSULTING, LLC
8000 W 44th Ave, Wheat Ridge, CO 80033
Ph: 303-433-0479 • F: 303-325-5449



LEGEND

- INITIAL EXCAVATION BOUNDARIES (09/08/23)
- APPROXIMATE EXCAVATION BOUNDARIES (12/01/23)
- APPROXIMATE OVER-EXCAVATION BOUNDARIES (AS OF 12/29/23)
- SAMPLE LOCATIONS WITH pH LESS THAN REGULATORY LIMIT AND/OR BACKGROUND COMPARISON
- SAMPLE LOCATIONS EXCEEDING REGULATORY LIMIT AND BACKGROUND COMPARISON (8.73)

PARAMETERS

SAMPLE LOCATION	DATE	DEPTH (FEET)
pH = pH (pH UNITS)		

NOTES:

VALUES EXCEEDING REGULATORY LIMITS/BACKGROUND COMPARISON, ONLY, DISPLAYED.

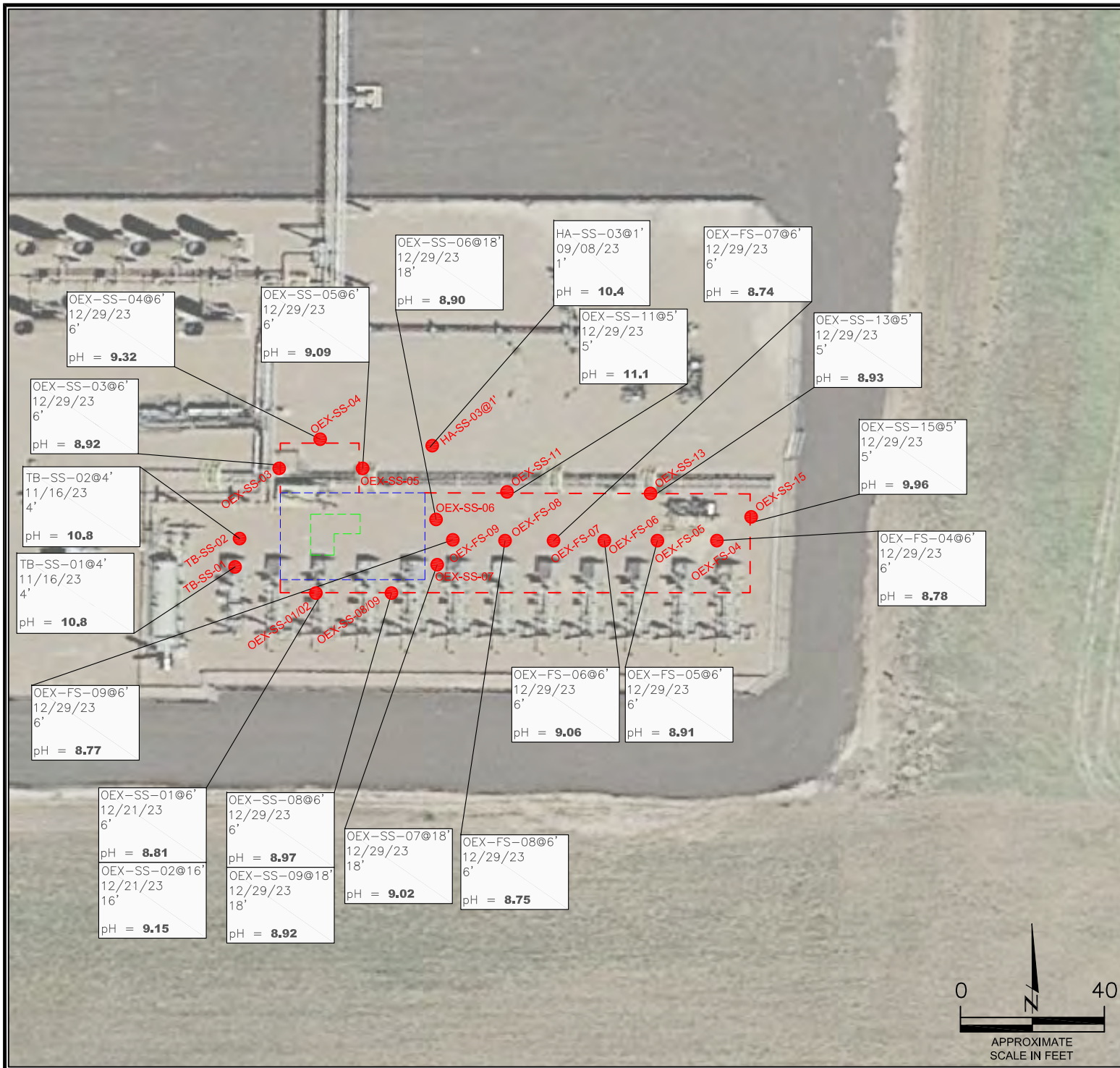
VALUES PRESENTED IN **BOLD** EXCEED ECMC TABLE 915-1 REGULATORY LIMITS AND BACKGROUND COMPARISON.

ECMC = ENERGY & CARBON MANAGEMENT COMMISSION

OVER-EXCAVATION pH MAP
SAM 25H-M166
OIL RELEASE
40.019685 / -104.734069
NW¼ SW¼ SEC.25 T1N R66W 6PM
WELD COUNTY, COLORADO
LOCATION ID 453474
REMEDATION # 33283

DATE: 01/31/24
DRAWN BY: AMN
FIG. NO. 2

EAGLE ENVIRONMENTAL CONSULTING, LLC
8000 W 44th Ave, Wheat Ridge, CO 80033
Ph: 303-433-0479 • F: 303-325-5449



LEGEND

- INITIAL EXCAVATION BOUNDARIES (09/08/23)
- APPROXIMATE EXCAVATION BOUNDARIES (12/01/23)
- APPROXIMATE OVER-EXCAVATION BOUNDARIES (AS OF 12/29/23)

SAMPLE LOCATIONS EXCEEDING REGULATORY LIMIT AND BACKGROUND COMPARISON (8.73)

PARAMETERS

SAMPLE LOCATION
DATE
DEPTH (FEET)
pH = pH (pH UNITS)

NOTES:

VALUES EXCEEDING REGULATORY LIMITS/BACKGROUND COMPARISON, ONLY, DISPLAYED.

VALUES PRESENTED IN **BOLD** EXCEED ECMC TABLE 915-1 REGULATORY LIMITS AND BACKGROUND COMPARISON.

ECMC = ENERGY & CARBON MANAGEMENT COMMISSION

RESIDUAL IMPACT SOIL ANALYTICAL MAP

SAM 25H-M166
OIL RELEASE
40.019685 / -104.734069
NW¼ SW¼ SEC.25 T1N R66W 6PM
WELD COUNTY, COLORADO
LOCATION ID 453474
REMEDATION # 33283

EAGLE ENVIRONMENTAL CONSULTING, LLC
8000 W 44th Ave, Wheat Ridge, CO 80033
Ph: 303-433-0479 • F: 303-325-5449

DATE: 01/31/24
DRAWN BY: AMN
FIG. NO. 3



TABLES

Table 1: Photoionization Detector Reading Summary

Table 2: Soil Analytical Results Summary – Removed

Table 3: Soil Analytical Results Summary – Left in Place Soil

Table 4: Residual Impact Analytical Results

TABLE 1
PHOTOIONIZATION DETECTOR READING SUMMARY
SAM 25H-M166
OIL RELEASE
40.019685 / -104.734069
NW¼ SW¼ SEC.25 T1N R66W 6PM
WELD COUNTY, COLORADO
LOCATION ID 453474
REMEDIAION # 33283

Sample Location (Latitude/Longitude)	Date	Approximate Depth (feet)	PID Reading (ppm-v)	Lab Submission (Y/N)	Notes
WC-01 @ 4.5' (40.019689 / -104.734067)	09/08/23	4.5	4209	Y	Waste characterization sample
HA-SS-01 @ 10' (40.019684 / -104.734070)	09/08/23	10	3314	Y	Release delineation samples
HA-SS-02 @ 4' (40.019741 / -104.734053)	09/08/23	4	155	Y	
HA-SS-03 @ 1' (40.019739 / -104.733968)	09/08/23	1	184.8	Y	
HA-SS-04 @ 5' (40.019680 / -104.733984)	09/08/23	5	265.7	Y	
HA-SS-05 @ 4' (40.019654 / -104.733969)	09/08/23	4	12.4	Y	
HA-SS-06 @ 3' (40.019657 / -104.734008)	09/08/23	3	23.7	Y	
HA-SS-07 @ 2' (40.019658 / -104.734049)	09/08/23	2	27.9	Y	
HA-SS-08 @ 3' (40.019659 / -104.734092)	09/08/23	3	19.2	Y	
Background-01 @ 5' (40.019560 / -104.733503)	09/08/23	5	6.1	Y	Background comparison samples
Background-02 @ 5' (40.019613 / -104.733506)	09/08/23	5	9.5	Y	
Background-03 @ 5' (40.019686 / -104.733501)	09/08/23	5	10.2	Y	
Background-04 @ 8' (40.019591 / -104.733508)	09/08/23	8	8.7	Y	
Background-05 @ 8' (40.019655 / -104.733501)	09/08/23	8	6.3	Y	
Background-06 @ 8' (40.019727 / -104.733498)	09/08/23	8	7.9	Y	
HA-SS-09 @ 15' (40.019655 / -104.734104)	10/26/23	15	33.1	Y	Additional release delineation samples
HA-SS-10 @ 15' (40.019704 / -104.734103)	10/26/23	15	40.0	Y	
HA-SS-11 @ 15' (40.019706 / -104.734043)	10/26/23	15	72.5	Y	
HA-SS-12 @ 15' (40.019703 / -104.733980)	10/26/23	15	12.7	Y	
HA-SS-13 @ 15' (40.019656 / -104.733980)	10/26/23	15	8.5	Y	
HA-SS-14 @ 15' (40.019655 / -104.734040)	10/26/23	15	10.1	Y	

TABLE 1
 PHOTOIONIZATION DETECTOR READING SUMMARY
 SAM 25H-M166
 OIL RELEASE
 40.019685 / -104.734069
 NW¼ SW¼ SEC.25 T1N R66W 6PM
 WELD COUNTY, COLORADO
 LOCATION ID 453474
 REMEDIATION # 33283

Sample Location (Latitude/Longitude)	Date	Approximate Depth (feet)	PID Reading (ppm-v)	Lab Submission (Y/N)	Notes
HA-SS-15 @ 15' (40.019587 / -104.734123)	10/26/23	15	3.9	Y	Additional release delineation samples, continued.
HA-SS-16 @ 15' (40.019631 / -104.734176)	10/26/23	15	2.6	Y	
Background-07 @ 15' (40.019474 / -104.734341)	11/09/23	15	1.9	Y	Background comparison samples
Background-08 @ 15' (40.019467 / -104.734152)	11/09/23	15	1.2	Y	
Background-09 @ 15' (40.019465 / -104.733955)	11/09/23	15	0.8	Y	
Background-10 @ 15' (40.019465 / -104.733705)	11/09/23	15	1.4	Y	
Background-11 @ 15' (40.019672 / -104.733507)	11/09/23	15	2.1	Y	
Background-12 @ 15' (40.019888 / -104.733476)	11/09/23	15	1.7	Y	
Background-13 @ 15' (40.019959 / -104.733494)	11/09/23	15	2.0	Y	
Background-14 @ 15' (40.020041 / -104.733487)	11/09/23	15	1.9	Y	
TB-SS-01 @ 4' (40.019657 / -104.734154)	11/16/23	4	1.4	Y	
TB-SS-02 @ 4' (40.019673 / -104.734152)	11/16/23	4	1.7	Y	
TB-SS-03 @ 4' (40.019655 / -104.734107)	11/16/23	4	2.4	Y	Facility change assessment samples
TB-SS-04 @ 4' (40.019672 / -104.734106)	11/16/23	4	1.9	Y	
TB-SS-05 @ 4' (40.019655 / -104.734067)	11/16/23	4	17.6	Y	
TB-SS-06 @ 4' (40.019673 / -104.734069)	11/16/23	4	21.4	Y	
TB-SS-07 @ 4' (40.019655 / -104.734027)	11/16/23	4	25.9	Y	
TB-SS-08 @ 4' (40.019674 / -104.734027)	11/16/23	4	23.6	Y	
TB-SS-09 @ 4' (40.019654 / -104.733982)	11/16/23	4	1.6	Y	
TB-SS-10 @ 4' (40.019675 / -104.733984)	11/16/23	4	1.2	Y	
TB-SS-11 @ 4' (40.019654 / -104.733939)	11/16/23	4	0.9	Y	

TABLE 1
PHOTOIONIZATION DETECTOR READING SUMMARY
SAM 25H-M166
OIL RELEASE
40.019685 / -104.734069
NW¼ SW¼ SEC.25 T1N R66W 6PM
WELD COUNTY, COLORADO
LOCATION ID 453474
REMEDATION # 33283

Sample Location (Latitude/Longitude)	Date	Approximate Depth (feet)	PID Reading (ppm-v)	Lab Submission (Y/N)	Notes
TB-SS-12 @ 4' (40.019676 / -104.733939)	11/16/23	4	1.2	Y	Facility change assessment samples, continued.
TB-SS-13 @ 4' (40.019653 / -104.733896)	11/16/23	4	0.9	Y	
TB-SS-14 @ 4' (40.019674 / -104.733896)	11/16/23	4	0.8	Y	
TB-SS-15 @ 4' (40.019655 / -104.733854)	11/16/23	4	1.2	Y	
TB-SS-16 @ 4' (40.019676 / -104.733854)	11/16/23	4	0.7	Y	
TB-SS-17 @ 4' (40.019654 / -104.733811)	11/16/23	4	0.6	Y	
TB-SS-18 @ 4' (40.019674 / -104.733810)	11/16/23	4	0.5	Y	
TB-SS-19 @ 4' (40.019654 / -104.733769)	11/16/23	4	0.6	Y	
TB-SS-20 @ 4' (40.019674 / -104.733770)	11/16/23	4	0.7	Y	
TB-SS-21 @ 4' (40.019653 / -104.733726)	11/16/23	4	1.1	Y	
TB-SS-22 @ 4' (40.019674 / -104.733727)	11/16/23	4	0.8	Y	
TB-SS-23 @ 4' (40.019653 / -104.733681)	11/16/23	4	1.4	Y	
TB-SS-24 @ 4' (40.019675 / -104.733682)	11/16/23	4	1.1	Y	
TB-SS-25 @ 4' (40.019701 / -104.734065)	11/16/23	4	668.4	Y	
CS-SS-01 @ 5' (40.019710 / -104.734067)	11/30/23	5	4.9	Y	Excavation confirmation samples
CS-SS-02 @ 16' (40.019710 / -104.734067)	11/30/23	16	7.3	Y	
CS-SS-03 @ 5' (40.019695 / -104.734109)	11/30/23	5	24.6	Y	
CS-SS-04 @ 16' (40.019695 / -104.734109)	11/30/23	16	1.2	Y	
CS-SS-05 @ 5' (40.019658 / -104.734110)	11/30/23	5	12.8	Y	
CS-SS-06 @ 16' (40.019658 / -104.734110)	11/30/23	16	8.2	Y	

TABLE 1
PHOTOIONIZATION DETECTOR READING SUMMARY
SAM 25H-M166
OIL RELEASE
40.019685 / -104.734069
NW¼ SW¼ SEC.25 T1N R66W 6PM
WELD COUNTY, COLORADO
LOCATION ID 453474
REMEDIATION # 33283

Sample Location (Latitude/Longitude)	Date	Approximate Depth (feet)	PID Reading (ppm-v)	Lab Submission (Y/N)	Notes
CS-SS-07 @ 5' (40.019647 / -104.734069)	11/30/23	5	6.5	Y	Excavation confirmation samples, continued.
CS-SS-08 @ 16' (40.019647 / -104.734069)	11/30/23	16	18.4	Y	
CS-FS-01 @ 18' (40.019682 / -104.734068)	11/30/23	18	11.8	Y	
CS-SS-09 @ 5' (40.019647 / -104.734003)	12/01/23	5	4.1	Y	
CS-SS-10 @ 16' (40.019647 / -104.734003)	12/01/23	16	5.6	Y	
CS-SS-11 @ 5' (40.019662 / -104.733973)	12/01/23	5	3.9	Y	
CS-SS-12 @ 16' (40.019662 / -104.733973)	12/01/23	16	0.9	Y	
CS-SS-13 @ 5' (40.019695 / -104.733974)	12/01/23	5	8.6	Y	
CS-SS-14 @ 16' (40.019695 / -104.733974)	12/01/23	16	6.8	Y	
CS-SS-15 @ 5' (40.019709 / -104.734007)	12/01/23	5	1.7	Y	
CS-SS-16 @ 16' (40.019709 / -104.734007)	12/01/23	16	1.9	Y	
CS-FS-02 @ 18' (40.019679 / -104.734006)	12/01/23	18	3.1	Y	
OEX-SS-01 @ 6' (40.019628 / -104.734065)	12/21/23	6	1.2	Y	pH over-excavation confirmation samples
OEX-SS-02 @ 16' (40.019628 / -104.734065)	12/21/23	16	1.3	Y	
OEX-FS-01 @ 20' (40.019666 / -104.734066)	12/21/23	20	1.4	Y	
OEX-SS-03 @ 6' (40.019736 / -104.734083)	12/29/23	6	0.6	Y	
OEX-SS-04 @ 6' (40.019749 / -104.734062)	12/29/23	6	0.6	Y	
OEX-SS-05 @ 6' (40.019740 / -104.734026)	12/29/23	6	0.5	Y	
OEX-SS-06 @ 18' (40.019691 / -104.733990)	12/29/23	18	0.3	Y	
OEX-SS-07 @ 18' (40.019648 / -104.733988)	12/29/23	18	0.4	Y	
OEX-SS-08 @ 6' (40.019627 / -104.734019)	12/29/23	6	0.2	Y	

TABLE 1
PHOTOIONIZATION DETECTOR READING SUMMARY
SAM 25H-M166
OIL RELEASE
40.019685 / -104.734069
NW¼ SW¼ SEC.25 T1N R66W 6PM
WELD COUNTY, COLORADO
LOCATION ID 453474
REMEDIATION # 33283

Sample Location (Latitude/Longitude)	Date	Approximate Depth (feet)	PID Reading (ppm-v)	Lab Submission (Y/N)	Notes
OEX-SS-09 @ 18' (40.019627 / -104.734019)	12/29/23	18	0.7	Y	pH over-excavation confirmation samples, continued.
OEX-SS-10 @ 5' (40.019718 / -104.733935)	12/29/23	5	0.3	Y	
OEX-SS-11 @ 5' (40.019721 / -104.733896)	12/29/23	5	0.3	Y	
OEX-SS-12 @ 5' (40.019719 / -104.733821)	12/29/23	5	0.3	Y	
OEX-SS-13 @ 5' (40.019720 / -104.733744)	12/29/23	5	0.4	Y	
OEX-SS-14 @ 5' (40.019718 / -104.733682)	12/29/23	5	0.3	Y	
OEX-SS-15 @ 5' (40.019682 / -104.733656)	12/29/23	5	0.3	Y	
OEX-SS-16 @ 5' (40.019642 / -104.733653)	12/29/23	5	0.3	Y	
OEX-SS-17 @ 5' (40.019625 / -104.733685)	12/29/23	5	0.3	Y	
OEX-SS-18 @ 5' (40.019627 / -104.733741)	12/29/23	5	0.2	Y	
OEX-SS-19 @ 5' (40.019629 / -104.733810)	12/29/23	5	0.3	Y	
OEX-SS-20 @ 5' (40.019626 / -104.733871)	12/29/23	5	0.4	Y	
OEX-SS-21 @ 5' (40.019629 / -104.733933)	12/29/23	5	0.2	Y	
OEX-FS-02 @ 20' (40.019722 / -104.734045)	12/29/23	20	0.2	N	
OEX-FS-03 @ 20' (40.019730 / -104.734045)	12/29/23	20	0.3	Y	
OEX-FS-04 @ 6' (40.019677 / -104.733686)	12/29/23	6	0.5	Y	
OEX-FS-05 @ 6' (40.019645 / -104.733732)	12/29/23	6	0.4	Y	
OEX-FS-06 @ 6' (40.019686 / -104.733771)	12/29/23	6	0.4	Y	
OEX-FS-07 @ 6' (40.019653 / -104.733828)	12/29/23	6	0.4	Y	
OEX-FS-08 @ 6' (40.019684 / -104.733885)	12/29/23	6	0.4	Y	
OEX-FS-09 @ 6' (40.019649 / -104.733929)	12/29/23	6	0.4	Y	
(Y/N) = Yes or No ppm-v = parts per million by volume PID = Photoionization Detector					

TABLE 2
SOIL ANALYTICAL RESULTS SUMMARY - REMOVED
SAM 25H-M166
OIL RELEASE
40.019685 / -104.734069
NW¼ SW¼ SEC.25 T1N R66W 6PM
WELD COUNTY, COLORADO
LOCATION ID 453474
REMEDATION # 33283

Sample Location (Latitude/Longitude)	Date	Approximate Depth (feet)	PID Reading (ppm-v)	Benzene (mg/kg)	Toluene (mg/kg)	Ethylbenzene (mg/kg)	Total Xylenes (mg/kg)	TPH-GRO (mg/kg)	TPH-DRO (mg/kg)	TPH-RRO (mg/kg)	1,2,4-TMB (mg/kg)	1,3,5-TMB (mg/kg)	Boron (mg/L)	Specific Conductance (mmhos/cm)	pH (pH units)	SAR
ECMC Table 915-1 Residential Soil Screening Levels				1.20	490	5.8	58	500			30	27	2	<4	6-8.3	<6
ECMC Table 915-1 Protection of Groundwater Soil Screening Levels (GSSLs)				0.0026	0.69	0.78	9.9	--			0.0081	0.0087	--	--	--	--
Local Cleanup Levels				--	--	--	--	--			--	--	--	--	8.73	--
Waste characterization sample																
WC-01 @ 4.5' (40.019689 / -104.734067)	09/08/23	4.5	4209	<0.0020	<0.0050	<0.0050	0.53	210	5800	1300	0.032*	0.39*	0.941	4.34	8.24	54.3
Release delineation samples																
HA-SS-01 @ 10' (40.019684 / -104.734070)	09/08/23	10	3314	5.3	21*	7.8	32*	640	4900	890	9.2*	3.3*	2.09	6.70	8.55	69.9
HA-SS-02 @ 4' (40.019741 / -104.734053)	09/08/23	4	155	<0.0020	<0.0050	<0.0050	<0.010	<0.50	34	25	<0.0050	<0.0050	0.220	0.175	9.09	0.891
HA-SS-04 @ 5' (40.019680 / -104.733984)	09/08/23	5	265.7	<0.0020	<0.0050	<0.0050	<0.010	<0.50	7.7	7.5	<0.0050	<0.0050	0.118	0.171	8.91	0.497
HA-SS-05 @ 4' (40.019654 / -104.733969)	09/08/23	4	12.4	<0.0020	<0.0050	<0.0050	<0.010	<0.50	6.8	5.0	<0.0050	<0.0050	0.125	0.166	8.51	0.617
HA-SS-06 @ 3' (40.019657 / -104.734008)	09/08/23	3	23.7	<0.0020	<0.0050	<0.0050	<0.010	<0.50	5.3	<50	<0.0050	<0.0050	0.510	0.182	9.10	0.950
HA-SS-07 @ 2' (40.019658 / -104.734049)	09/08/23	2	27.9	<0.0020	<0.0050	<0.0050	<0.010	<0.50	5.3	<50	<0.0050	<0.0050	0.157	0.157	8.67	0.724
HA-SS-08 @ 3' (40.019659 / -104.734092)	09/08/23	3	19.2	<0.0020	<0.0050	<0.0050	<0.010	<0.50	5.5	<50	<0.0050	<0.0050	0.121	0.166	8.21	0.412
Additional release delineation samples																
HA-SS-09 @ 15' (40.019655 / -104.734104)	10/26/23	15	33.1	<0.0020	<0.0050	<0.0050	<0.010	0.038	28	11	<0.0050	<0.0050	<2.00	0.244	8.74	1.34
HA-SS-10 @ 15' (40.019704 / -104.734103)	10/26/23	15	40.0	<0.0020	0.0047	<0.0050	0.019	0.82	33	11	0.0044	0.0086	0.0189	0.779	7.79	3.31
HA-SS-11 @ 15' (40.019706 / -104.734043)	10/26/23	15	72.5	<0.0020	<0.0050	<0.0050	<0.010	0.039	42	11	<0.0050	<0.0050	0.00762	0.382	8.21	3.71
HA-SS-12 @ 15' (40.019703 / -104.733980)	10/26/23	15	12.7	<0.0020	<0.0050	<0.0050	<0.010	0.039	47	12	<0.0050	<0.0050	0.0223	0.607	8.25	5.29
HA-SS-13 @ 15' (40.019656 / -104.733980)	10/26/23	15	8.5	<0.0020	<0.0050	<0.0050	<0.010	0.036	45	11	<0.0050	<0.0050	0.0462	0.365	9.04	3.92
HA-SS-14 @ 15' (40.019655 / -104.734040)	10/26/23	15	10.1	<0.0020	<0.0050	<0.0050	<0.010	0.041	<50	11	<0.0050	<0.0050	0.0467	0.331	8.93	3.75
Facility change assessment samples																
TB-SS-03 @ 4' (40.019655 / -104.734107)	11/16/23	4	2.4	<0.0020	<0.0050	<0.0050	<0.010	<0.50	270	190	<0.0050	<0.0050	0.782	0.998	8.41	2.05
TB-SS-04 @ 4' (40.019672 / -104.734106)	11/16/23	4	1.9	<0.0020	<0.0050	<0.0050	<0.010	<0.50	280	180	<0.0050	<0.0050	0.661	0.908	8.39	1.95
TB-SS-05 @ 4' (40.019655 / -104.734067)	11/16/23	4	17.6	<0.0020	<0.0050	<0.0050	<0.010	<0.50	130	100	<0.0050	<0.0050	0.512	0.524	8.45	1.20
TB-SS-06 @ 4' (40.019673 / -104.734069)	11/16/23	4	21.4	<0.0020	<0.0050	<0.0050	<0.010	<0.50	260	170	<0.0050	<0.0050	0.506	0.620	8.33	1.56
TB-SS-07 @ 4' (40.019655 / -104.734027)	11/16/23	4	25.9	<0.0020	<0.0050	<0.0050	<0.010	<0.50	70	16	<0.0050	<0.0050	0.411	0.459	8.48	1.10
TB-SS-08 @ 4' (40.019674 / -104.734027)	11/16/23	4	23.6	<0.0020	<0.0050	<0.0050	<0.010	<0.50	120	19	<0.0050	<0.0050	0.381	0.415	8.51	1.07
TB-SS-09 @ 4' (40.019654 / -104.733982)	11/16/23	4	1.6	<0.0020	<0.0050	<0.0050	<0.010	<0.50	34	13	<0.0050	<0.0050	0.344	0.512	8.34	1.15
TB-SS-10 @ 4' (40.019675 / -104.733984)	11/16/23	4	1.2	<0.0020	<0.0050	<0.0050	<0.010	<0.50	34	11	<0.0050	<0.0050	0.320	0.416	8.47	0.959

TABLE 2
SOIL ANALYTICAL RESULTS SUMMARY - REMOVED
SAM 25H-M166
OIL RELEASE
40.019685 / -104.734069
NW¼ SW¼ SEC.25 T1N R66W 6PM
WELD COUNTY, COLORADO
LOCATION ID 453474
REMEDATION # 33283

Sample Location (Latitude/Longitude)	Date	Approximate Depth (feet)	PID Reading (ppm-v)	Benzene (mg/kg)	Toluene (mg/kg)	Ethylbenzene (mg/kg)	Total Xylenes (mg/kg)	TPH-GRO (mg/kg)	TPH-DRO (mg/kg)	TPH-RRO (mg/kg)	1,2,4-TMB (mg/kg)	1,3,5-TMB (mg/kg)	Boron (mg/L)	Specific Conductance (mmhos/cm)	pH (pH units)	SAR
ECMC Table 915-1 Residential Soil Screening Levels				1.20	490	5.8	58	500			30	27	2	<4	6-8.3	<6
ECMC Table 915-1 Protection of Groundwater Soil Screening Levels (GSSLs)				0.0026	0.69	0.78	9.9	--			0.0081	0.0087	--	--	--	--
Local Cleanup Levels				--	--	--	--	--			--	--	--	--	8.73	--
Facility change assessment samples, continued.																
TB-SS-11 @ 4' (40.019654 / -104.733939)	11/16/23	4	0.9	<0.0020	<0.0050	<0.0050	<0.010	<0.50	27	9.7	<0.0050	<0.0050	0.394	0.163	9.71	0.292
TB-SS-12 @ 4' (40.019676 / -104.733939)	11/16/23	4	1.2	<0.0020	<0.0050	<0.0050	<0.010	<0.50	28	10	<0.0050	<0.0050	0.261	0.186	8.52	0.316
TB-SS-13 @ 4' (40.019653 / -104.733896)	11/16/23	4	0.9	<0.0020	<0.0050	<0.0050	<0.010	<0.50	29	12	<0.0050	<0.0050	0.191	0.218	8.54	0.404
TB-SS-14 @ 4' (40.019674 / -104.733896)	11/16/23	4	0.8	<0.0020	<0.0050	<0.0050	<0.010	<0.50	28	12	<0.0050	<0.0050	0.200	0.206	9.59	0.361
TB-SS-15 @ 4' (40.019655 / -104.733854)	11/16/23	4	1.2	<0.0020	<0.0050	<0.0050	<0.010	<0.50	25	13	<0.0050	<0.0050	0.251	0.231	8.96	0.952
TB-SS-16 @ 4' (40.019676 / -104.733854)	11/16/23	4	0.7	<0.0020	<0.0050	<0.0050	<0.010	<0.50	24	12	<0.0050	<0.0050	0.236	0.329	8.65	1.46
TB-SS-17 @ 4' (40.019654 / -104.733811)	11/16/23	4	0.6	<0.0020	<0.0050	<0.0050	<0.010	<0.50	25	12	<0.0050	<0.0050	0.308	0.262	9.22	0.627
TB-SS-18 @ 4' (40.019674 / -104.733810)	11/16/23	4	0.5	<0.0020	<0.0050	<0.0050	<0.010	<0.50	23	10	<0.0050	<0.0050	0.224	0.624	9.16	0.812
TB-SS-19 @ 4' (40.019654 / -104.733769)	11/16/23	4	0.6	<0.0020	<0.0050	<0.0050	<0.010	<0.50	24	11	<0.0050	<0.0050	0.174	0.260	9.70	0.567
TB-SS-20 @ 4' (40.019674 / -104.733770)	11/16/23	4	0.7	<0.0020	<0.0050	<0.0050	<0.010	<0.50	27	10	<0.0050	<0.0050	0.298	0.278	9.54	0.572
TB-SS-21 @ 4' (40.019653 / -104.733726)	11/16/23	4	1.1	<0.0020	<0.0050	<0.0050	<0.010	<0.50	20	11	<0.0050	<0.0050	0.423	0.270	9.04	0.391
TB-SS-22 @ 4' (40.019674 / -104.733727)	11/16/23	4	0.8	<0.0020	<0.0050	<0.0050	<0.010	<0.50	14	14	<0.0050	<0.0050	0.416	0.324	8.91	0.642
TB-SS-23 @ 4' (40.019653 / -104.733681)	11/16/23	4	1.4	<0.0020	<0.0050	<0.0050	<0.010	<0.50	18	15	<0.0050	<0.0050	0.199	0.253	9.62	0.472
TB-SS-24 @ 4' (40.019675 / -104.733682)	11/16/23	4	1.1	<0.0020	<0.0050	<0.0050	<0.010	<0.50	23	14	<0.0050	<0.0050	0.173	0.186	9.74	0.298
TB-SS-25 @ 4' (40.019701 / -104.734065)	11/16/23	4	668.4	<0.0020	0.066	0.083	0.86	26	280	67	0.40	0.12	0.198	0.133	9.83	0.0456
Excavation confirmation samples																
CS-SS-01 @ 5' (40.019710 / -104.734067)	11/30/23	5	4.9	<0.0020	<0.0050	<0.0050	<0.010	<0.50	19	9.3	<0.0050	<0.0050	0.0394	0.285	9.14	1.94
CS-SS-02 @ 16' (40.019710 / -104.734067)	11/30/23	16	7.3	<0.0020	<0.0050	<0.0050	<0.010	<0.50	27	9.4	<0.0050	<0.0050	0.0406	0.311	8.67	2.13
CS-SS-07 @ 5' (40.019647 / -104.734069)	11/30/23	5	6.5	<0.0020	<0.0050	<0.0050	<0.010	<0.50	31	12	<0.0050	<0.0050	0.0162	0.212	9.05	2.90
CS-SS-08 @ 16' (40.019647 / -104.734069)	11/30/23	16	18.4	<0.0020	<0.0050	<0.0050	<0.010	<0.50	29	14	<0.0050	<0.0050	0.0151	0.179	8.85	1.50
CS-FS-01 @ 18' (40.019682 / -104.734068)	11/30/23	18	11.8	<0.0020	<0.0050	<0.0050	<0.010	<0.50	11	13	<0.0050	<0.0050	0.0125	0.211	8.96	2.74
CS-FS-02 @ 18' (40.019679 / -104.734066)	12/01/23	18	3.1	<0.0020	<0.0050	<0.0050	<0.010	0.043	15	23	<0.0050	<0.0050	0.0956	0.253	8.40	3.19

TABLE 2
SOIL ANALYTICAL RESULTS SUMMARY - REMOVED
SAM 25H-M166
OIL RELEASE
40.019685 / -104.734069
NW¼ SW¼ SEC.25 T1N R66W 6PM
WELD COUNTY, COLORADO
LOCATION ID 453474
REMEDATION # 33283

Sample Location (Latitude/Longitude)	Date	Approximate Depth (feet)	PID Reading (ppm-v)	Benzene (mg/kg)	Toluene (mg/kg)	Ethylbenzene (mg/kg)	Total Xylenes (mg/kg)	TPH-GRO (mg/kg)	TPH-DRO (mg/kg)	TPH-RRO (mg/kg)	1,2,4-TMB (mg/kg)	1,3,5-TMB (mg/kg)	Boron (mg/L)	Specific Conductance (mmhos/cm)	pH (pH units)	SAR
ECMC Table 915-1 Residential Soil Screening Levels				1.20	490	5.8	58	500			30	27	2	<4	6-8.3	<6
ECMC Table 915-1 Protection of Groundwater Soil Screening Levels (GSSLs)				0.0026	0.69	0.78	9.9	--			0.0081	0.0087	--	--	--	--
Local Cleanup Levels				--	--	--	--	--			--	--	--	--	8.73	--
Excavation confirmation samples, continued.																
CS-SS-09 @ 5' (40.019647 / -104.734003)	12/01/23	5	4.1	<0.0020	<0.0050	<0.0050	<0.010	0.045	18	27	<0.0050	<0.0050	0.0795	0.196	8.77	0.712
CS-SS-10 @ 16' (40.019647 / -104.734003)	12/01/23	16	5.6	<0.0020	<0.0050	<0.0050	<0.010	0.041	13	25	<0.0050	<0.0050	0.0739	0.256	8.94	3.72
CS-SS-11 @ 5' (40.019662 / -104.733973)	12/01/23	5	3.9	<0.0020	<0.0050	<0.0050	<0.010	0.047	24	18	<0.0050	<0.0050	0.145	0.442	8.45	0.915
CS-SS-12 @ 16' (40.019662 / -104.733973)	12/01/23	16	0.9	<0.0020	<0.0050	<0.0050	<0.010	0.045	15	19	<0.0050	<0.0050	<2.00	0.196	8.79	3.06
CS-SS-13 @ 5' (40.019695 / -104.733974)	12/01/23	5	8.6	<0.0020	<0.0050	<0.0050	<0.010	0.047	27	25	<0.0050	<0.0050	0.0365	0.174	8.86	0.633
CS-SS-14 @ 16' (40.019695 / -104.733974)	12/01/23	16	6.8	<0.0020	<0.0050	<0.0050	<0.010	0.042	33	23	<0.0050	<0.0050	<2.00	0.208	8.74	3.29
CS-SS-15 @ 5' (40.019709 / -104.734007)	12/01/23	5	1.7	<0.0020	<0.0050	<0.0050	<0.010	0.044	31	22	<0.0050	<0.0050	0.100	0.421	8.40	0.808
CS-SS-16 @ 16' (40.019709 / -104.734007)	12/01/23	16	1.9	<0.0020	<0.0050	<0.0050	<0.010	0.041	25	23	<0.0050	<0.0050	<2.00	0.136	8.52	1.14
CS-FS-02 @ 18' (40.019679 / -104.734006)	12/01/23	18	3.1	<0.0020	<0.0050	<0.0050	<0.010	0.043	15	23	<0.0050	<0.0050	0.0956	0.253	8.40	3.19
ECMC = Energy & Carbon Management Commission mg/kg = milligrams per kilogram mmhos/cm = millimhos per centimeter mg/L = milligrams per liter SAR = Sodium Adsorption Ratio PID = Photoionization Detector ppm-v = parts per million by volume Note: Values presented with a less than symbol (<) did not contain concentrations at or above the laboratory MDL and/or reporting limit. Note: Values presented in highlighted BOLD contained concentrations exceeding ECMC Table 915-1 Regulatory Limits and backgrounds, where applicable. Bold values exceed Table 915-1 regulatory limits. Values presented with asterisk (*) exceed Table 915-1 GSSLs																

TABLE 3
SOIL ANALYTICAL RESULTS SUMMARY - LEFT IN PLACE
SAM 25H-M166
OIL RELEASE
40.019685 / -104.734069
NW¼ SW¼ SEC.25 T1N R66W 6PM
WELD COUNTY, COLORADO
LOCATION ID 453474
REMEDATION # 33283

Sample Location (Latitude/Longitude)	Date	Approximate Depth (feet)	PID Reading (ppm-v)	Benzene (mg/kg)	Toluene (mg/kg)	Ethylbenzene (mg/kg)	Total Xylenes (mg/kg)	TPH-GRO (mg/kg)	TPH-DRO (mg/kg)	TPH-RRO (mg/kg)	1,2,4-TMB (mg/kg)	1,3,5-TMB (mg/kg)	Boron (mg/L)	Specific Conductance (mmhos/cm)	pH (pH units)	SAR
ECMC Table 915-1 Residential Soil Screening Levels				1.20	490	5.8	58	500			30	27	2	<4	6-8.3	<6
ECMC Table 915-1 Protection of Groundwater Soil Screening Levels (GSSLs)				0.0026	0.69	0.78	9.9	--			0.0081	0.0087	--	--	--	--
Local Cleanup Levels				--	--	--	--	--			--	--	--	--	8.73	--
Background comparison samples																
Background-01 @ 5' (40.019560 / -104.733503)	09/08/23	5	6.1	NA	NA	NA	NA	NA	NA	NA	NA	NA	0.0692	0.116	7.22	0.0549
Background-02 @ 5' (40.019613 / -104.733506)	09/08/23	5	9.5	NA	NA	NA	NA	NA	NA	NA	NA	NA	0.185	0.118	7.21	0.0626
Background-03 @ 5' (40.019686 / -104.733501)	09/08/23	5	10.2	NA	NA	NA	NA	NA	NA	NA	NA	NA	0.142	0.153	7.29	0.0971
Background-04 @ 8' (40.019591 / -104.733508)	09/08/23	8	8.7	NA	NA	NA	NA	NA	NA	NA	NA	NA	0.0996	0.244	7.41	0.490
Background-05 @ 8' (40.019655 / -104.733501)	09/08/23	8	6.3	NA	NA	NA	NA	NA	NA	NA	NA	NA	0.0987	0.224	7.34	0.582
Background-06 @ 8' (40.019727 / -104.733498)	09/08/23	8	7.9	NA	NA	NA	NA	NA	NA	NA	NA	NA	0.0951	0.160	7.52	0.425
Background-07 @ 15' (40.019474 / -104.734341)	11/09/23	15	1.9	NA	NA	NA	NA	NA	NA	NA	NA	NA	0.0763	0.403	8.36	0.424
Background-08 @ 15' (40.019467 / -104.734152)	11/09/23	15	1.2	NA	NA	NA	NA	NA	NA	NA	NA	NA	0.0728	0.301	8.73	1.26
Background-09 @ 15' (40.019465 / -104.733955)	11/09/23	15	0.8	NA	NA	NA	NA	NA	NA	NA	NA	NA	0.0806	0.426	8.36	1.14
Background-10 @ 15' (40.019465 / -104.733705)	11/09/23	15	1.4	NA	NA	NA	NA	NA	NA	NA	NA	NA	0.0516	0.548	8.12	0.791
Background-11 @ 15' (40.019672 / -104.733507)	11/09/23	15	2.1	NA	NA	NA	NA	NA	NA	NA	NA	NA	0.184	0.414	8.16	1.13
Background-12 @ 15' (40.019888 / -104.733476)	11/09/23	15	1.7	NA	NA	NA	NA	NA	NA	NA	NA	NA	0.0949	0.304	8.34	1.04
Background-13 @ 15' (40.019959 / -104.733494)	11/09/23	15	2.0	NA	NA	NA	NA	NA	NA	NA	NA	NA	0.0694	0.447	8.23	1.30
Background-14 @ 15' (40.020041 / -104.733487)	11/09/23	15	1.9	NA	NA	NA	NA	NA	NA	NA	NA	NA	0.168	0.286	8.63	0.693
Release delineation samples																
HA-SS-03 @ 1' (40.019739 / -104.733968)	09/08/23	1	184.8	<0.0020	<0.0050	<0.0050	<0.010	<0.50	12	13	<0.0050	<0.0050	0.137	0.220	10.4	0.573
HA-SS-15 @ 15' (40.019587 / -104.734123)	10/26/23	15	3.9	<0.0020	<0.0050	<0.0050	<0.010	0.035	16	5.7	<0.0050	<0.0050	0.0542	0.841	8.03	1.68
HA-SS-16 @ 15' (40.019631 / -104.734176)	10/26/23	15	2.6	<0.0020	<0.0050	<0.0050	<0.010	0.039	14	5.9	<0.0050	<0.0050	0.0333	0.751	8.14	1.58
Facility change assessment samples																
TB-SS-01 @ 4' (40.019657 / -104.734154)	11/16/23	4	1.4	<0.0020	<0.0050	<0.0050	<0.010	<0.50	29	6.6	<0.0050	<0.0050	0.515	0.303	10.8	0.838
TB-SS-02 @ 4' (40.019673 / -104.734152)	11/16/23	4	1.7	<0.0020	<0.0050	<0.0050	<0.010	<0.50	26	6.1	<0.0050	<0.0050	0.547	0.354	10.8	0.869

TABLE 3
SOIL ANALYTICAL RESULTS SUMMARY - LEFT IN PLACE
SAM 25H-M166
OIL RELEASE
40.019685 / -104.734069
NW¼ SW¼ SEC.25 T1N R66W 6PM
WELD COUNTY, COLORADO
LOCATION ID 453474
REMEDATION # 33283

Sample Location (Latitude/Longitude)	Date	Approximate Depth (feet)	PID Reading (ppm-v)	Benzene (mg/kg)	Toluene (mg/kg)	Ethylbenzene (mg/kg)	Total Xylenes (mg/kg)	TPH-GRO (mg/kg)	TPH-DRO (mg/kg)	TPH-RRO (mg/kg)	1,2,4-TMB (mg/kg)	1,3,5-TMB (mg/kg)	Boron (mg/L)	Specific Conductance (mmhos/cm)	pH (pH units)	SAR
ECMC Table 915-1 Residential Soil Screening Levels				1.20	490	5.8	58	500			30	27	2	<4	6-8.3	<6
ECMC Table 915-1 Protection of Groundwater Soil Screening Levels (GSSLs)				0.0026	0.69	0.78	9.9	--			0.0081	0.0087	--	--	--	--
Local Cleanup Levels				--	--	--	--	--			--	--	--	--	8.73	--
Excavation confirmation samples																
CS-SS-03 @ 5' (40.019695 / -104.734109)	11/30/23	5	24.6	<0.0020	<0.0050	<0.0050	<0.010	<0.50	26	8.6	<0.0050	<0.0050	0.0386	0.299	8.63	2.01
CS-SS-04 @ 16' (40.019695 / -104.734109)	11/30/23	16	1.2	<0.0020	<0.0050	<0.0050	<0.010	<0.50	30	8.9	<0.0050	<0.0050	0.141	0.361	8.42	1.51
CS-SS-05 @ 5' (40.019658 / -104.734110)	11/30/23	5	12.8	<0.0020	<0.0050	<0.0050	<0.010	<0.50	33	11	<0.0050	<0.0050	0.0945	0.331	8.40	1.03
CS-SS-06 @ 16' (40.019658 / -104.734110)	11/30/23	16	8.2	<0.0020	<0.0050	<0.0050	<0.010	<0.50	35	12	<0.0050	<0.0050	0.0563	0.286	8.38	0.820
CS-SS-15 @ 5' (40.019709 / -104.734007)	12/01/23	5	1.7	<0.0020	<0.0050	<0.0050	<0.010	0.044	31	22	<0.0050	<0.0050	0.100	0.421	8.40	0.808
CS-SS-16 @ 16' (40.019709 / -104.734007)	12/01/23	16	1.9	<0.0020	<0.0050	<0.0050	<0.010	0.041	25	23	<0.0050	<0.0050	<2.00	0.136	8.52	1.14
Over excavation samples																
OEX-SS-01 @ 6' (40.019628 / -104.734065)	12/21/23	6	1.2	NA	NA	NA	NA	NA	NA	NA	NA	NA	NA	NA	8.81	NA
OEX-SS-02 @ 16' (40.019628 / -104.734065)	12/21/23	16	1.3	NA	NA	NA	NA	NA	NA	NA	NA	NA	NA	NA	9.15	NA
OEX-FS-01 @ 20' (40.019666 / -104.734066)	12/21/23	20	1.4	NA	NA	NA	NA	NA	NA	NA	NA	NA	NA	NA	8.39	NA
OEX-SS-03 @ 6' (40.019736 / -104.734083)	12/29/23	6	0.6	NA	NA	NA	NA	NA	NA	NA	NA	NA	NA	NA	8.92	NA
OEX-SS-04 @ 6' (40.019749 / -104.734062)	12/29/23	6	0.6	NA	NA	NA	NA	NA	NA	NA	NA	NA	NA	NA	9.32	NA
OEX-SS-05 @ 6' (40.019740 / -104.734026)	12/29/23	6	0.5	NA	NA	NA	NA	NA	NA	NA	NA	NA	NA	NA	9.09	NA
OEX-SS-06 @ 18' (40.019691 / -104.733990)	12/29/23	18	0.3	NA	NA	NA	NA	NA	NA	NA	NA	NA	NA	NA	8.90	NA
OEX-SS-07 @ 18' (40.019648 / -104.733988)	12/29/23	18	0.4	NA	NA	NA	NA	NA	NA	NA	NA	NA	NA	NA	9.02	NA
OEX-SS-08 @ 6' (40.019627 / -104.734019)	12/29/23	6	0.2	NA	NA	NA	NA	NA	NA	NA	NA	NA	NA	NA	8.97	NA
OEX-SS-09 @ 18' (40.019627 / -104.734019)	12/29/23	18	0.7	NA	NA	NA	NA	NA	NA	NA	NA	NA	NA	NA	8.92	NA
OEX-SS-10 @ 5' (40.019718 / -104.733935)	12/29/23	5	0.3	NA	NA	NA	NA	NA	NA	NA	NA	NA	NA	NA	8.26	NA
OEX-SS-11 @ 5' (40.019721 / -104.733896)	12/29/23	5	0.3	NA	NA	NA	NA	NA	NA	NA	NA	NA	NA	NA	11.1	NA
OEX-SS-12 @ 5' (40.019719 / -104.733821)	12/29/23	5	0.3	NA	NA	NA	NA	NA	NA	NA	NA	NA	NA	NA	8.62	NA
OEX-SS-13 @ 5' (40.019720 / -104.733744)	12/29/23	5	0.4	NA	NA	NA	NA	NA	NA	NA	NA	NA	NA	NA	8.93	NA
OEX-SS-14 @ 5' (40.019718 / -104.733682)	12/29/23	5	0.3	NA	NA	NA	NA	NA	NA	NA	NA	NA	NA	NA	8.57	NA
OEX-SS-15 @ 5' (40.019682 / -104.733656)	12/29/23	5	0.3	NA	NA	NA	NA	NA	NA	NA	NA	NA	NA	NA	9.96	NA
OEX-SS-16 @ 5' (40.019642 / -104.733653)	12/29/23	5	0.3	NA	NA	NA	NA	NA	NA	NA	NA	NA	NA	NA	7.52	NA

TABLE 3
SOIL ANALYTICAL RESULTS SUMMARY - LEFT IN PLACE
SAM 25H-M166
OIL RELEASE
40.019685 / -104.734069
NW¼ SW¼ SEC.25 T1N R66W 6PM
WELD COUNTY, COLORADO
LOCATION ID 453474
REMEDATION # 33283

Sample Location (Latitude/Longitude)	Date	Approximate Depth (feet)	PID Reading (ppm-v)	Benzene (mg/kg)	Toluene (mg/kg)	Ethylbenzene (mg/kg)	Total Xylenes (mg/kg)	TPH-GRO (mg/kg)	TPH-DRO (mg/kg)	TPH-RRO (mg/kg)	1,2,4-TMB (mg/kg)	1,3,5-TMB (mg/kg)	Boron (mg/L)	Specific Conductance (mmhos/cm)	pH (pH units)	SAR
ECMC Table 915-1 Residential Soil Screening Levels				1.20	490	5.8	58	500			30	27	2	<4	6-8.3	<6
ECMC Table 915-1 Protection of Groundwater Soil Screening Levels (GSSLs)				0.0026	0.69	0.78	9.9	--			0.0081	0.0087	--	--	--	--
Local Cleanup Levels				--	--	--	--	--			--	--	--	--	8.73	--
Over excavation samples, continued.																
OEEX-SS-17 @ 5' (40.019625 / -104.733685)	12/29/23	5	0.3	NA	NA	NA	NA	NA	NA	NA	NA	NA	NA	NA	8.07	NA
OEEX-SS-18 @ 5' (40.019627 / -104.733741)	12/29/23	5	0.2	NA	NA	NA	NA	NA	NA	NA	NA	NA	NA	NA	8.32	NA
OEEX-SS-19 @ 5' (40.019629 / -104.733810)	12/29/23	5	0.3	NA	NA	NA	NA	NA	NA	NA	NA	NA	NA	NA	8.04	NA
OEEX-SS-20 @ 5' (40.019626 / -104.733871)	12/29/23	5	0.4	NA	NA	NA	NA	NA	NA	NA	NA	NA	NA	NA	7.72	NA
OEEX-SS-21 @ 5' (40.019629 / -104.733933)	12/29/23	5	0.2	NA	NA	NA	NA	NA	NA	NA	NA	NA	NA	NA	8.22	NA
OEEX-FS-03 @ 20' (40.019730 / -104.734045)	12/29/23	20	0.3	NA	NA	NA	NA	NA	NA	NA	NA	NA	NA	NA	8.66	NA
OEEX-FS-04 @ 6' (40.019677 / -104.733686)	12/29/23	6	0.5	NA	NA	NA	NA	NA	NA	NA	NA	NA	NA	NA	8.78	NA
OEEX-FS-05 @ 6' (40.019645 / -104.733732)	12/29/23	6	0.4	NA	NA	NA	NA	NA	NA	NA	NA	NA	NA	NA	8.91	NA
OEEX-FS-06 @ 6' (40.019686 / -104.733771)	12/29/23	6	0.4	NA	NA	NA	NA	NA	NA	NA	NA	NA	NA	NA	9.06	NA
OEEX-FS-07 @ 6' (40.019653 / -104.733828)	12/29/23	6	0.4	NA	NA	NA	NA	NA	NA	NA	NA	NA	NA	NA	8.74	NA
OEEX-FS-08 @ 6' (40.019684 / -104.733885)	12/29/23	6	0.4	NA	NA	NA	NA	NA	NA	NA	NA	NA	NA	NA	8.75	NA
OEEX-FS-09 @ 6' (40.019649 / -104.733929)	12/29/23	6	0.4	NA	NA	NA	NA	NA	NA	NA	NA	NA	NA	NA	8.77	NA
ECMC = Energy & Carbon Management Commission				NA - Not Analyzed												
mg/kg = milligrams per kilogram																
mmhos/cm = millimhos per centimeter																
mg/L = milligrams per liter																
SAR = Sodium Adsorption Ratio																
PID = Photoionization Detector																
ppm-v = parts per million by volume																
Note: Values presented with a less than symbol (<) did not contain concentrations at or above the laboratory MDL and/or reporting limit.																
Note: Values presented in highlighted BOLD contained concentrations exceeding ECMC Table 915-1 Regulatory Limits and backgrounds, where applicable. Bold values exceed Table 915-1 regulatory limits. Values presented with asterisk (*) exceed Table 915-1 GSSLs																
TPH-GRO = Total Petroleum Hydrocarbons - Gasoline Range Organics																
TPH-DRO = Total Petroleum Hydrocarbons - Diesel Range Organics																
TPH-RRO = Total Petroleum Hydrocarbons - Residual Range Organics																
1,2,4-TMB = 1,2,4-Trimethylbenzene																
1,3,5-TMB = 1,3,5-Trimethylbenzene																
MDL = Minimum Detection Limits																

TABLE 4
RESIDUAL IMPACTS ANALYTICAL SUMMARY
SAM 25H-M166
OIL RELEASE
40.019685 / -104.734069
NW¼ SW¼ SEC.25 T1N R66W 6PM
WELD COUNTY, COLORADO
LOCATION ID 453474
REMEDIATION # 33283

Sample Location (Latitude/Longitude)	Date	Approximate Depth (feet)	pH (pH units)
ECMC Table 915-1 Residential Soil Screening Levels			6-8.3
Local Cleanup Levels			8.73
Release delineation samples			
HA-SS-03 @ 1' (40.019739 / -104.733968)	09/08/23	1	10.4
Facility change assessment samples			
TB-SS-01 @ 4' (40.019657 / -104.734154)	11/16/23	4	10.8
TB-SS-02 @ 4' (40.019673 / -104.734152)	11/16/23	4	10.8
Over-excavation samples			
OEX-SS-01 @ 6' (40.019628 / -104.734065)	12/21/23	6	8.81
OEX-SS-02 @ 16' (40.019628 / -104.734065)	12/21/23	16	9.15
OEX-SS-03 @ 6' (40.019736 / -104.734083)	12/29/23	6	8.92
OEX-SS-04 @ 6' (40.019749 / -104.734062)	12/29/23	6	9.32
OEX-SS-05 @ 6' (40.019740 / -104.734026)	12/29/23	6	9.09
OEX-SS-06 @ 18' (40.019691 / -104.733990)	12/29/23	18	8.90
OEX-SS-07 @ 18' (40.019648 / -104.733988)	12/29/23	18	9.02
OEX-SS-08 @ 6' (40.019627 / -104.734019)	12/29/23	6	8.97
OEX-SS-09 @ 18' (40.019627 / -104.734019)	12/29/23	18	8.92
OEX-SS-11 @ 5' (40.019721 / -104.733896)	12/29/23	5	11.1

TABLE 4
RESIDUAL IMPACTS ANALYTICAL SUMMARY
SAM 25H-M166
OIL RELEASE
40.019685 / -104.734069
NW¼ SW¼ SEC.25 T1N R66W 6PM
WELD COUNTY, COLORADO
LOCATION ID 453474
REMEDATION # 33283

Sample Location (Latitude/Longitude)	Date	Approximate Depth (feet)	pH (pH units)
ECMC Table 915-1 Residential Soil Screening Levels			6-8.3
Local Cleanup Levels			8.73
Over-excavation samples, continued			
OEX-SS-13 @ 5' (40.019720 / -104.733744)	12/29/23	5	8.93
OEX-SS-15 @ 5' (40.019682 / -104.733656)	12/29/23	5	9.96
OEX-FS-04 @ 6' (40.019677 / -104.733686)	12/29/23	6	8.78
OEX-FS-05 @ 6' (40.019645 / -104.733732)	12/29/23	6	8.91
OEX-FS-06 @ 6' (40.019686 / -104.733771)	12/29/23	6	9.06
OEX-FS-07 @ 6' (40.019653 / -104.733828)	12/29/23	6	8.74
OEX-FS-08 @ 6' (40.019684 / -104.733885)	12/29/23	6	8.75
OEX-FS-09 @ 6' (40.019649 / -104.733929)	12/29/23	6	8.77
ECMC = Energy & Carbon Management Commission			
Note: Values presented in highlighted BOLD contained concentrations exceeding ECMC Table 915-1 Regulatory Limits and backgrounds, where applicable.			



ATTACHMENT A

Photo Log

Sam 25H-M166
Location ID 453474
Remediation # 33283

Over-Excavation & Sampling Activities

December 2023



Over-Excavation / Confirmation Sampling – 12/21/23

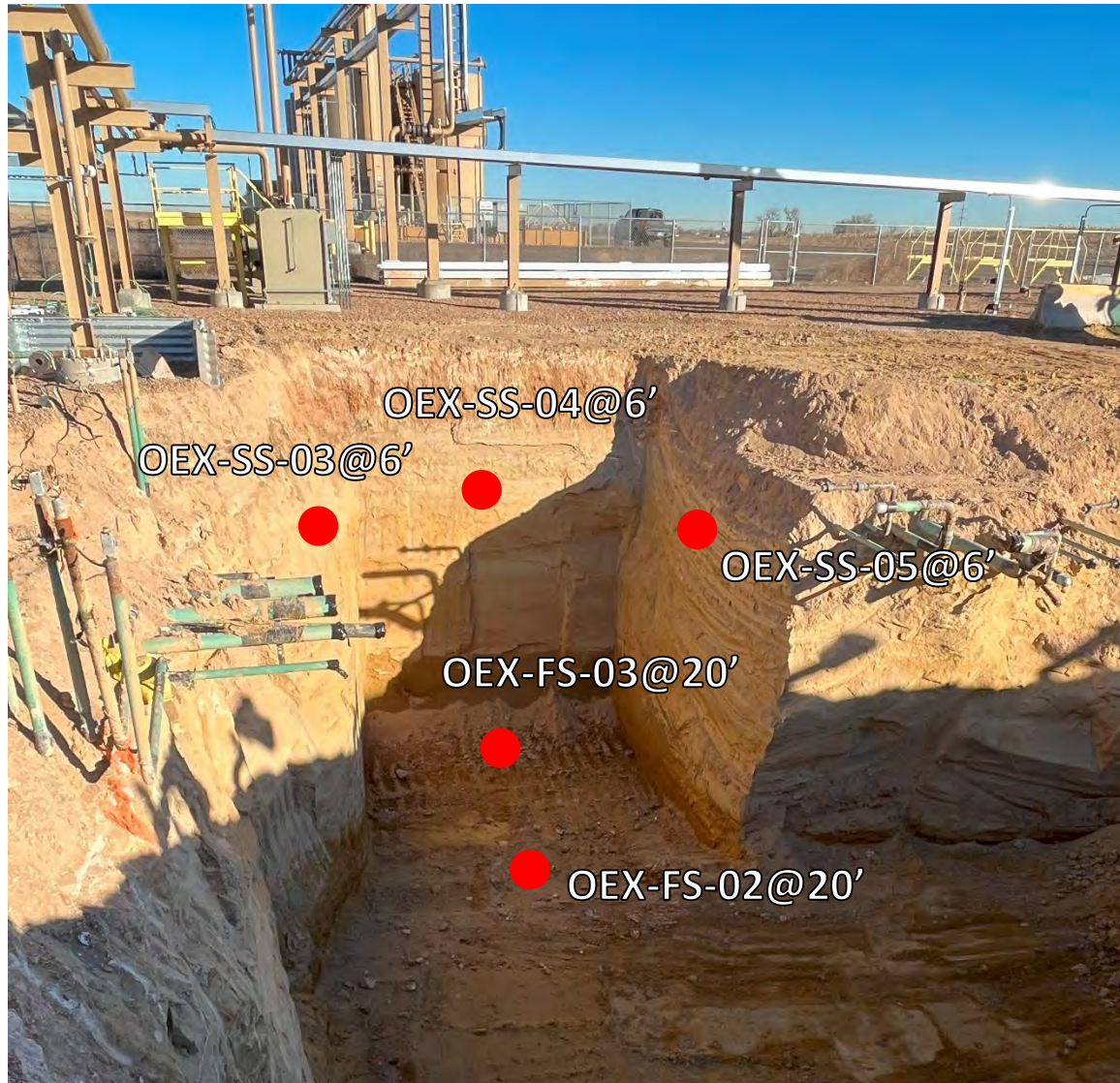


Looking south-southwest at over- excavation of residual pH observed in CS-FS-01@18', CS-SS-07@5', and CS-SS-08@16'

No petroleum hydrocarbon staining or odor observed

Confirmation soil samples OEX-SS-01, OEX-SS-02, and OEX-FS-01 collected for pH analysis

Over-Excavation / Confirmation Sampling – 12/29/23

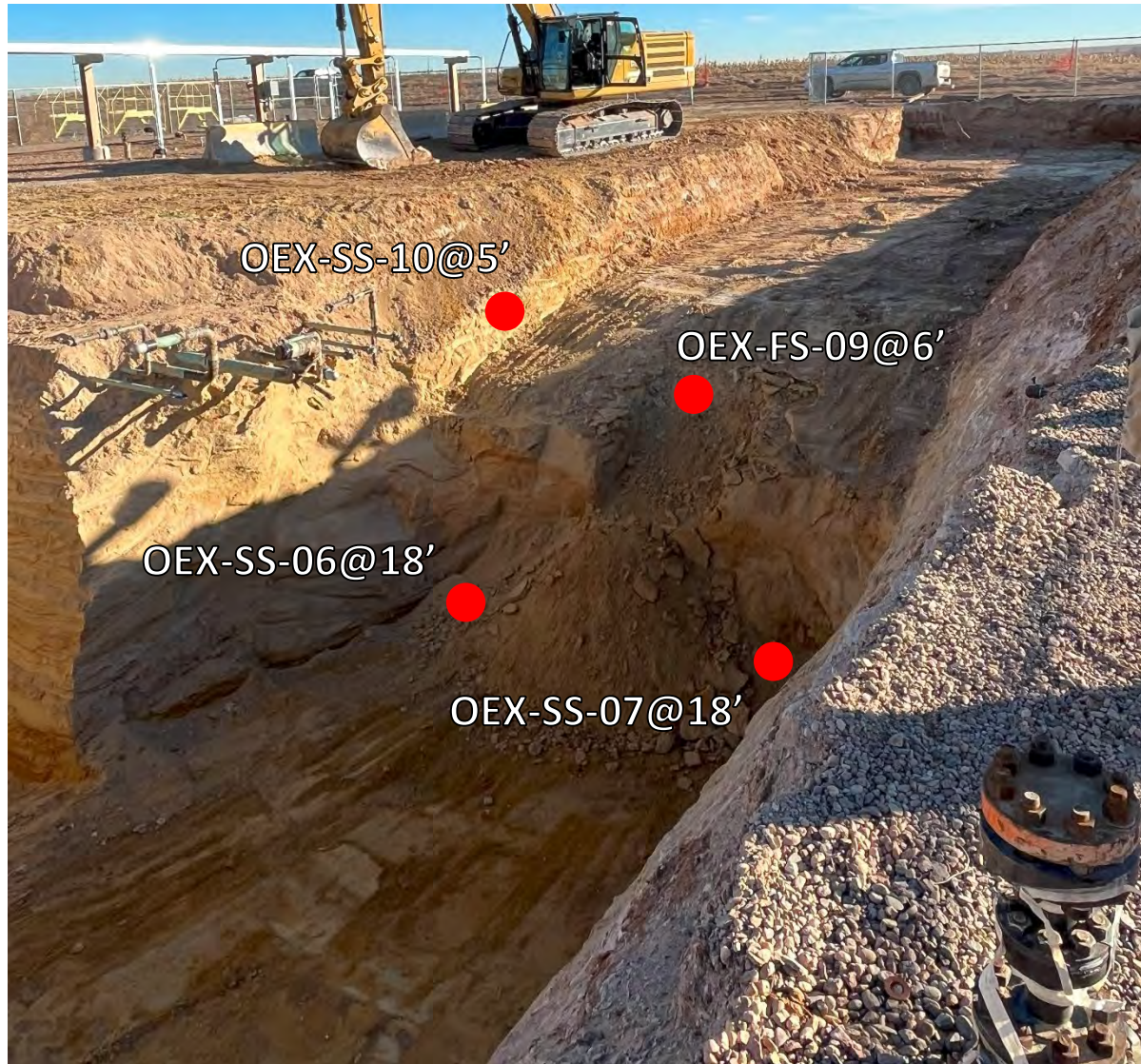


Looking north-northeast at over- excavation of residual pH observed in CS-SS-01@5' and HA-SS-02@4'

No petroleum hydrocarbon staining or odor observed

Confirmation soil samples OEX-SS-03 through OEX-SS-05, and OEX-FS-03 collected for pH analysis

Over-Excavation / Confirmation Sampling – 12/29/23



Looking northeast at over- excavation of residual pH observed in CS-SS-12@16', CS-SS-13@5', and CS-SS-14@16'

No petroleum hydrocarbon staining or odor observed

Confirmation soil samples OEX-SS-06, OEX-SS-07, OEX-SS-10, and OEX-FS-09 collected for pH analysis

Over-Excavation / Confirmation Sampling – 12/29/23



OEX-SS-08@6'

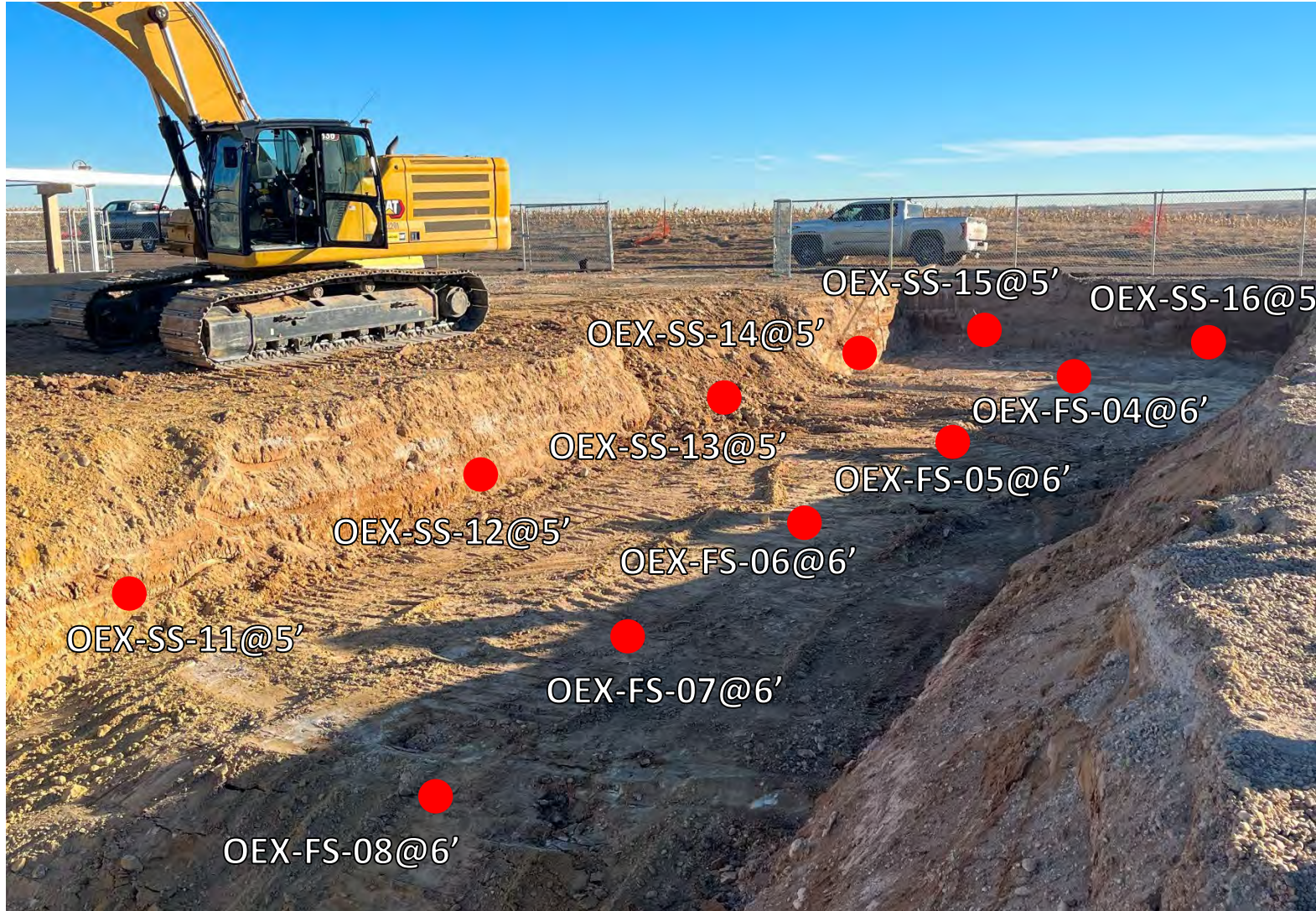
OEX-SS-09@18'

Looking southwest at over- excavation of residual pH observed in CS-SS-09@5' and CS-SS-10@16'

No petroleum hydrocarbon staining or odor observed

Confirmation soil samples OEX-SS-08 and OEX-SS-09 collected for pH analysis

Over-Excavation / Confirmation Sampling – 12/29/23



Looking east-northeast at over- excavation of residual pH observed in TB-SS-14@4', TB-SS-15@4', and TB-SS-17@4' through TB-SS-24@4'

No petroleum hydrocarbon staining or odor observed

Confirmation soil samples OEX-SS-11 through OEX-SS-21, and OEX-FS-04 through OEX-FS-08 collected for pH analysis

Over-Excavation / Confirmation Sampling – 12/29/23



Looking southeast at over- excavation of residual pH observed in TB-SS-14@4', TB-SS-15@4', and TB-SS-17@4' through TB-SS-24@4'

No petroleum hydrocarbon staining or odor observed

Confirmation soil samples OEX-SS-11 through OEX-SS-21, and OEX-FS-04 through OEX-FS-08 collected for pH analysis

Over-Excavation / Confirmation Sampling – 12/29/23



Looking south at over- excavation of residual pH observed in TB-SS-14@4', TB-SS-15@4', and TB-SS-17@4' through TB-SS-24@4'

No petroleum hydrocarbon staining or odor observed

Confirmation soil samples OEX-SS-11 through OEX-SS-21, and OEX-FS-04 through OEX-FS-08 collected for pH analysis

Over-Excavation / Confirmation Sampling – 12/29/23



Looking southwest at over- excavation of residual pH observed in TB-SS-14@4', TB-SS-15@4', and TB-SS-17@4' through TB-SS-24@4'

No petroleum hydrocarbon staining or odor observed

Confirmation soil samples OEX-SS-11 through OEX-SS-21, and OEX-FS-04 through OEX-FS-08 collected for pH analysis

Over-Excavation / Confirmation Sampling – 12/29/23



Looking southwest at over- excavation of residual pH observed in TB-SS-14@4', TB-SS-15@4', and TB-SS-17@4' through TB-SS-24@4'

No petroleum hydrocarbon staining or odor observed

Confirmation soil samples OEX-SS-11 through OEX-SS-21, and OEX-FS-04 through OEX-FS-08 collected for pH analysis



ATTACHMENT B

Laboratory Analytical Reports

Summit Scientific

4653 Table Mountain Drive, Golden, Colorado 80401

303.277.9310

December 28, 2023

Andrew Newberry

Eagle Environmental Consulting

8000 W 44th Ave

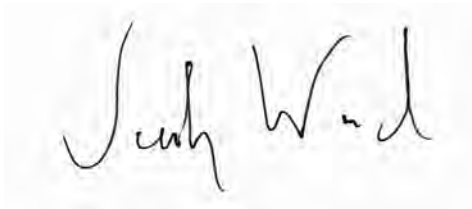
Wheat Ridge, CO 80033

RE: Civitas - Sam 25H-M166

Work Order # 2312430

Enclosed are the results of analyses for samples received by Summit Scientific on 12/21/23 13:44. If you have any questions concerning this report, please feel free to contact me.

Sincerely,

A handwritten signature in black ink, appearing to read "Jacob Wood". The signature is written in a cursive, flowing style.

Jacob Wood For Paul Shrewsbury

President



Eagle Environmental Consulting
8000 W 44th Ave
Wheat Ridge CO, 80033

Project: Civitas - Sam 25H-M166

Project Number: [none]

Project Manager: Andrew Newberry

Reported:
12/28/23 12:35

ANALYTICAL REPORT FOR SAMPLES

Sample ID	Laboratory ID	Matrix	Date Sampled	Date Received
OEX-SS-01@6'	2312430-01	Soil	12/21/23 12:10	12/21/23 13:44
OEX-SS-02@16'	2312430-02	Soil	12/21/23 12:15	12/21/23 13:44
OEX-FS-01@20'	2312430-03	Soil	12/21/23 12:20	12/21/23 13:44

Summit Scientific

The results in this report apply to the samples analyzed in accordance with the chain of custody document. This analytical report must be reproduced in its entirety.

SUMMIT SCIENTIFIC

4653 Table Mountain Drive
Golden, CO 80403
303-277-9310

Lab ID	Page 1 of 1
2312430	

Client: Eagle Environmental Consulting		Send Data To:		Send Invoice To:	
Address: 8000 W 44th Ave		Project Manager: Andrew Newberry		Company: Civitas	
City/State/Zip: Wheat Ridge, CO 80033		E-Mail: anewberry@eagle-enviro.com		Project Name/Location: Sam 25H-M166	
Phone: 303-433-0479		Project Name: Sam 25H-M166		AFE#:	
Sampler Name: EM		Project Number: —		PO/Billing Codes:	
				Contact: Costin	

					Preservative				Matrix				Analysis Requested								Special Instructions
ID	Sample Description	Date Sampled	Time Sampled	# of containers	HCl	HNO3	None	Other	Water	Soil	Air-Canister #	Other									
1	OEX-ss-01 @ 6'	12/21/23	1210	2			X			X			X								Hold for additional analysis
2	OEX-ss-02 @ 16'	↓	1215	↓			↓			↓			↓								pH = saturated paste prep
3	OEX-FS-01 @ 20'	↓	1220	↓			↓			↓			↓								MDIs needed
4																					
5																					
6																					
7																					
8																					
9																					
10																					
11																					
12																					
13																					
14																					
15																					

Relinquished by: <i>John W. White</i>	Date/Time: 12/21/23 13:43	Received by: <i>John W. White</i>	Date/Time: 12/21/23 13:44	TAT Business Days	Field DO	Notes:
Relinquished by:	Date/Time:	Received by:	Date/Time:	Same Day	Field EC	
				1 Day	Field ORP	
				2 Days	Field pH	
				3 Days	Field Temp.	
Relinquished by:	Date/Time:	Received by:	Date/Time:	Standard	Field Turb.	
Temperature Upon Receipt: 2.1	Corrected Temperature	IR gun #: 2	HNO3 lot #:			

S₂

Sample Receipt Checklist

S2 Work Order# 2312430Client: Eagle Civitas Client Project ID: Sam 25H-M166Shipped Via: H.D./P.U./FedEx/UPS/USPS/Other ☐ Airbill #: ☐
☒ ☐ ☐ ☐ ☐
Matrix (Check all that apply) Air ☐ Soil/Solid ☒ Water ☐ Other ☐Temp (°C) 2.1 Thermometer # 2

	Yes	No	N/A	Comments (if any)
If samples require cooling, is the temperature < 6°C? ⁽¹⁾ NOTE: If samples are delivered the same day of sampling, this requirement is met if there is evidence that cooling has begun.	<input checked="" type="checkbox"/>	<input type="checkbox"/>	<input type="checkbox"/>	on ice
If custody seals are present, are they intact? ⁽¹⁾	<input type="checkbox"/>	<input type="checkbox"/>	<input checked="" type="checkbox"/>	
Are samples due within 48 hours present?	<input type="checkbox"/>	<input checked="" type="checkbox"/>	<input type="checkbox"/>	72 hours
Are water samples with short hold times present? Note the short hold analysis in the comments column - pH, Nitrate/Nitrite, Ferrous Iron (Fe ²⁺), Hexavalent Chromium (Cr ⁶⁺ , Cr VI), COD/BOD, Total Coliform, E. Coli, Total Residual Chlorine (TRC), Dissolved Oxygen	<input type="checkbox"/>	<input type="checkbox"/>	<input checked="" type="checkbox"/>	
Is a chain-of-custody (COC) form present and filled out Completely? ⁽¹⁾	<input checked="" type="checkbox"/>	<input type="checkbox"/>	<input type="checkbox"/>	
Is the COC properly relinquished by the client w/ date and time recorded? ⁽¹⁾	<input checked="" type="checkbox"/>	<input type="checkbox"/>	<input type="checkbox"/>	
Were all samples received intact? ⁽¹⁾	<input checked="" type="checkbox"/>	<input type="checkbox"/>	<input type="checkbox"/>	
Was adequate sample volume provided? ⁽¹⁾	<input checked="" type="checkbox"/>	<input type="checkbox"/>	<input type="checkbox"/>	
Does the COC agree with the number and type of sample bottles received? ⁽¹⁾	<input checked="" type="checkbox"/>	<input type="checkbox"/>	<input type="checkbox"/>	
Do the sample IDs on the bottle labels match the COC? ⁽¹⁾	<input checked="" type="checkbox"/>	<input type="checkbox"/>	<input type="checkbox"/>	
For volatiles in water – is there headspace present? If yes, contact client and note in narrative.	<input type="checkbox"/>	<input type="checkbox"/>	<input checked="" type="checkbox"/>	
Are samples preserved that require preservation (excluding cooling)? ⁽¹⁾ Note the type of preservative in the comments column – HCl, H ₂ SO ₄ , NaOH, HNO ₃ , etc.	<input type="checkbox"/>	<input type="checkbox"/>	<input checked="" type="checkbox"/>	
If samples are acid preserved for metals, is the pH ≤ 2? ⁽¹⁾ Record the pH in Comments.	<input type="checkbox"/>	<input type="checkbox"/>	<input checked="" type="checkbox"/>	
If dissolved metals are requested, were samples field filtered?	<input type="checkbox"/>	<input type="checkbox"/>	<input checked="" type="checkbox"/>	
Additional Comments (if any):				
⁽¹⁾ If NO, then contact the client before proceeding with analysis and note in case narrative.				

J. h. V. d.
Custodian Printed Name

12/21/23 13:44
Date/Time



Eagle Environmental Consulting
8000 W 44th Ave
Wheat Ridge CO, 80033

Project: Civitas - Sam 25H-M166

Project Number: [none]

Project Manager: Andrew Newberry

Reported:

12/28/23 12:35

OEX-SS-01@6'

2312430-01 (Soil)

Summit Scientific

Physical Parameters by APHA/ASTM/EPA Methods, Saturated Paste Extraction

Date Sampled: **12/21/23 12:10**

Analyte	Result	Reporting		Units	Dilution	Batch	Prepared	Analyzed	Method	Notes
		Limit	MDL							
pH	8.81			pH Units	1	BGL0942	12/27/23	12/27/23	EPA 9045D	

Summit Scientific

The results in this report apply to the samples analyzed in accordance with the chain of custody document. This analytical report must be reproduced in its entirety.



Eagle Environmental Consulting
8000 W 44th Ave
Wheat Ridge CO, 80033

Project: Civitas - Sam 25H-M166

Project Number: [none]

Project Manager: Andrew Newberry

Reported:

12/28/23 12:35

OEX-SS-02@16'

2312430-02 (Soil)

Summit Scientific

Physical Parameters by APHA/ASTM/EPA Methods, Saturated Paste Extraction

Date Sampled: **12/21/23 12:15**

Analyte	Result	Reporting		Units	Dilution	Batch	Prepared	Analyzed	Method	Notes
		Limit	MDL							
pH	9.15			pH Units	1	BGL0942	12/27/23	12/27/23	EPA 9045D	

Summit Scientific

The results in this report apply to the samples analyzed in accordance with the chain of custody document. This analytical report must be reproduced in its entirety.



Eagle Environmental Consulting
8000 W 44th Ave
Wheat Ridge CO, 80033

Project: Civitas - Sam 25H-M166

Project Number: [none]

Project Manager: Andrew Newberry

Reported:

12/28/23 12:35

OEX-FS-01@20'

2312430-03 (Soil)

Summit Scientific

Physical Parameters by APHA/ASTM/EPA Methods, Saturated Paste Extraction

Date Sampled: **12/21/23 12:20**

Analyte	Result	Reporting		Units	Dilution	Batch	Prepared	Analyzed	Method	Notes
		Limit	MDL							
pH	8.39			pH Units	1	BGL0942	12/27/23	12/27/23	EPA 9045D	

Summit Scientific

The results in this report apply to the samples analyzed in accordance with the chain of custody document. This analytical report must be reproduced in its entirety.



Eagle Environmental Consulting
8000 W 44th Ave
Wheat Ridge CO, 80033

Project: Civitas - Sam 25H-M166

Project Number: [none]

Project Manager: Andrew Newberry

Reported:

12/28/23 12:35

Physical Parameters by APHA/ASTM/EPA Methods, Saturated Paste Extraction - Quality Control

Summit Scientific

Analyte	Result	Reporting		Spike Level	Source Result	%REC		RPD	Limit	Notes
		Limit	Units			%REC	Limits			

Batch BGL0942 - General Preparation

LCS (BGL0942-BS1)

Prepared & Analyzed: 12/27/23

pH	9.18	pH Units	9.18	100	95-105
----	------	----------	------	-----	--------

Duplicate (BGL0942-DUP1)

Source: 2311412-03RE1

Prepared & Analyzed: 12/27/23

pH	8.73	pH Units	8.98	2.82	20
----	------	----------	------	------	----

Summit Scientific

The results in this report apply to the samples analyzed in accordance with the chain of custody document. This analytical report must be reproduced in its entirety.



Eagle Environmental Consulting
8000 W 44th Ave
Wheat Ridge CO, 80033

Project: Civitas - Sam 25H-M166

Project Number: [none]
Project Manager: Andrew Newberry

Reported:
12/28/23 12:35

Notes and Definitions

DET	Analyte DETECTED
ND	Analyte NOT DETECTED at or above the reporting limit
NR	Not Reported
dry	Sample results reported on a dry weight basis
RPD	Relative Percent Difference

Summit Scientific

4653 Table Mountain Drive, Golden, Colorado 80401

303.277.9310

January 04, 2024

Andrew Newberry

Eagle Environmental Consulting

8000 W 44th Ave

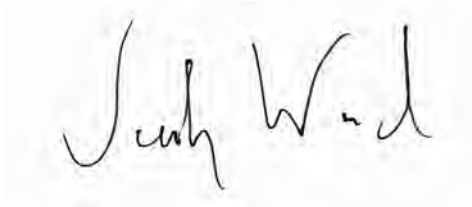
Wheat Ridge, CO 80033

RE: Civitas - Sam 25H-M166

Work Order # 2312539

Enclosed are the results of analyses for samples received by Summit Scientific on 12/29/23 12:23. If you have any questions concerning this report, please feel free to contact me.

Sincerely,

A handwritten signature in black ink, appearing to read "Jacob Wood". The signature is written in a cursive, flowing style.

Jacob Wood For Paul Shrewsbury

President



Eagle Environmental Consulting
8000 W 44th Ave
Wheat Ridge CO, 80033

Project: Civitas - Sam 25H-M166

Project Number: [none]
Project Manager: Andrew Newberry

Reported:
01/04/24 12:15

ANALYTICAL REPORT FOR SAMPLES

Sample ID	Laboratory ID	Matrix	Date Sampled	Date Received
OEX-SS-03@6'	2312539-01	Soil	12/29/23 09:00	12/29/23 12:23
OEX-SS-04@6'	2312539-02	Soil	12/29/23 09:05	12/29/23 12:23
OEX-SS-05@6'	2312539-03	Soil	12/29/23 09:10	12/29/23 12:23
OEX-SS-06@18'	2312539-04	Soil	12/29/23 09:15	12/29/23 12:23
OEX-SS-07@18'	2312539-05	Soil	12/29/23 09:20	12/29/23 12:23
OEX-SS-08@6'	2312539-06	Soil	12/29/23 09:25	12/29/23 12:23
OEX-SS-09@18'	2312539-07	Soil	12/29/23 09:30	12/29/23 12:23
OEX-SS-10@5'	2312539-08	Soil	12/29/23 09:35	12/29/23 12:23
OEX-SS-11@5'	2312539-09	Soil	12/29/23 09:40	12/29/23 12:23
OEX-SS-12@5'	2312539-10	Soil	12/29/23 09:45	12/29/23 12:23
OEX-SS-13@5'	2312539-11	Soil	12/29/23 09:50	12/29/23 12:23
OEX-SS-14@5'	2312539-12	Soil	12/29/23 09:55	12/29/23 12:23
OEX-SS-15@5'	2312539-13	Soil	12/29/23 10:00	12/29/23 12:23
OEX-SS-16@5'	2312539-14	Soil	12/29/23 10:05	12/29/23 12:23
OEX-SS-17@5'	2312539-15	Soil	12/29/23 10:10	12/29/23 12:23
OEX-SS-18@5'	2312539-16	Soil	12/29/23 10:15	12/29/23 12:23
OEX-SS-19@5'	2312539-17	Soil	12/29/23 10:20	12/29/23 12:23
OEX-SS-20@5'	2312539-18	Soil	12/29/23 10:25	12/29/23 12:23
OEX-SS-21@5'	2312539-19	Soil	12/29/23 10:30	12/29/23 12:23
OEX-FS-03@20'	2312539-20	Soil	12/29/23 10:35	12/29/23 12:23
OEX-FS-04@6'	2312539-21	Soil	12/29/23 10:40	12/29/23 12:23
OEX-FS-05@6'	2312539-22	Soil	12/29/23 10:45	12/29/23 12:23
OEX-FS-06@6'	2312539-23	Soil	12/29/23 10:50	12/29/23 12:23
OEX-FS-07@6'	2312539-24	Soil	12/29/23 10:55	12/29/23 12:23
OEX-FS-08@6'	2312539-25	Soil	12/29/23 11:00	12/29/23 12:23
OEX-FS-09@6'	2312539-26	Soil	12/29/23 11:05	12/29/23 12:23

Summit Scientific

The results in this report apply to the samples analyzed in accordance with the chain of custody document. This analytical report must be reproduced in its entirety.



Eagle Environmental Consulting
8000 W 44th Ave
Wheat Ridge CO, 80033

Project: Civitas - Sam 25H-M166

Project Number: [none]

Project Manager: Andrew Newberry

Reported:

01/04/24 12:15

Summit Scientific

A handwritten signature in black ink that reads "Judy Wood".

The results in this report apply to the samples analyzed in accordance with the chain of custody document. This analytical report must be reproduced in its entirety.

SUMMIT SCIENTIFIC

4653 Table Mountain Drive
Golden, CO 80403
303-277-9310

Lab ID	Page 1 of 2
2312539.1	

Client: Eagle Environmental Consulting		Send Data To:		Send Invoice To:											
Address: 8000 W 44th Ave		Project Manager: Andrew Newberry		Company: Civitas											
City/State/Zip: Wheat Ridge, CO 80033		E-Mail: anewberry@eagle-enviro.com		Project Name/Location: Sam 25H - m166											
Phone: 303-433-0479		Project Name: Sam 25H - m166		AFE#:											
Sampler Name: RS / TC		Project Number:		PO/Billing Codes:											
		Contact: Costin													
		Preservative		Matrix											
		Analysis Requested		Special Instructions											
ID	Sample Description	Date Sampled	Time Sampled	# of containers	HCl	HNO3	None	Other	Water	Soil	Air-Canister #	Other	pH - 9045D		
1	OEX-SS-03@6'	12/29/23	900	2			X			X			X	Hold for additional analysis	
2	OEX-SS-04@6'		905											pH = saturated paste prep	
3	OEX-SS-05@6'		910												
4	OEX-SS-06@18'		915											*MDLs needed	
5	OEX-SS-07@18'		920												
6	OEX-SS-08@6'		925												
7	OEX-SS-09@18'		930												
8	OEX-SS-10@5'		935												
9	OEX-SS-11@5'		940												
10	OEX-SS-12@5'		945												
11	OEX-SS-13@5'		950												
12	OEX-SS-14@5'		955												
13	OEX-SS-15@5'		1000												
14	OEX-SS-16@5'		1005												
15	OEX-SS-17@5'	✓	1010	✓											
Relinquished by: [Signature]		Date/Time: 12/29/23 1218		Received by: [Signature]		Date/Time: 12/29/23 12:23		TAT Business Days		Field DO		Notes:			
Relinquished by:		Date/Time:		Received by:		Date/Time:		Same Day		Field EC					
								1 Day		Field ORP					
								2 Days		Field pH					
Relinquished by:		Date/Time:		Received by:		Date/Time:		3 Days		Field Temp.					
								Standard		Field Turb.					
Temperature Upon Receipt: 3.2		Corrected Temperature		IR gun #: 2		HNO3 lot #:									

SUMMIT SCIENTIFIC

4653 Table Mountain Drive
Golden, CO 80403
303-277-9310

Lab ID	Page <u>2</u> of <u>2</u>
2312539.2	

Client: <u>Eagle Environmental Consulting</u>					Send Data To:					Send Invoice To:									
Address: <u>8000 W 44th Ave</u>					Project Manager: <u>Andrew Newberry</u>					Company: <u>Civitas</u>									
City/State/Zip: <u>Wheat Ridge, CO 80033</u>					E-Mail: <u>anewberry@eagle-enviro.com</u>					Project Name/Location: <u>Sam 25H-m166</u>									
Phone: <u>303-433-0479</u>					Project Name: <u>Sam 25H-m166</u>					AFE#:									
Sampler Name: <u>RS/TC</u>					Project Number: <u> </u>					PO/Billing Codes:									
					Contact: <u>Costin</u>														
					Preservative				Matrix				Analysis Requested				Special Instructions		
ID	Sample Description	Date Sampled	Time Sampled	# of containers	HCl	HNO3	None	Other	Water	Soil	Air-Canister #	Other							
1	OEX-SS-19c5'	12/29/23	1015	2			X			X			X						Had for additional analysis
2	OEX-SS-19c5'		1020																pH-saturated probe prep
3	OEX-SS-20c5'		1025																
4	OEX-SS-21c5'		1030																*MDLs needed
5	OEX-FS-03c20'		1035																
6	OEX-FS-04c6'		1040																
7	OEX-FS-05c6'		1045																
8	OEX-FS-06c6'		1050																
9	OEX-FS-07c6'		1055																
10	OEX-FS-08c6'		1100																
11	OEX-FS-09c6'	↓	1105	↓			↓			↓			↓						
12																			
13																			
14																			
15																			
Relinquished by: <u>[Signature]</u> Date/Time: <u>12/29/23 12:18</u>					Received by: <u>J. V. d. V.</u> Date/Time: <u>12/29/23 12:23</u>					TAT Business Days		Field DO		Notes:					
										Same Day		Field EC							
Relinquished by:					Received by:					1 Day		Field ORP							
										2 Days		Field pH							
Relinquished by:					Received by:					3 Days		Field Temp.							
										Standard		Field Turb.							
Temperature Upon Receipt: <u>3.2</u>					Corrected Temperature					IR gun #: <u>2</u>		HNO3 lot #:							

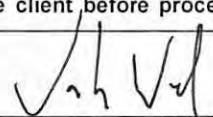
S₂

Sample Receipt Checklist

S2 Work Order# 2312539Client: Eagle Civics Client Project ID: Sam 254 - m/66Shipped Via: H.D./P.U./FedEx/UPS/USPS/Other ☐ Airbill #: ☐
☒ ☐ ☐ ☐ ☐
Matrix (Check all that apply) Air ☐ Soil/Solid ☒ Water ☐ Other ☐Temp (°C) 3.2 Thermometer # 2

	Yes	No	N/A	Comments (if any)
If samples require cooling, is the temperature < 6°C? ⁽¹⁾ NOTE: If samples are delivered the same day of sampling, this requirement is met if there is evidence that cooling has begun.	<input checked="" type="checkbox"/>	<input type="checkbox"/>	<input type="checkbox"/>	on ice
If custody seals are present, are they intact? ⁽¹⁾	<input type="checkbox"/>	<input type="checkbox"/>	<input checked="" type="checkbox"/>	
Are samples due within 48 hours present?	<input type="checkbox"/>	<input checked="" type="checkbox"/>	<input type="checkbox"/>	72 hours
Are water samples with short hold times present? Note the short hold analysis in the comments column - pH, Nitrate/Nitrite, Ferrous Iron (Fe ²⁺), Hexavalent Chromium (Cr ⁶⁺ , Cr VI), COD/BOD, Total Coliform, E. Coli, Total Residual Chlorine (TRC), Dissolved Oxygen	<input type="checkbox"/>	<input type="checkbox"/>	<input checked="" type="checkbox"/>	
Is a chain-of-custody (COC) form present and filled out Completely? ⁽¹⁾	<input checked="" type="checkbox"/>	<input type="checkbox"/>	<input type="checkbox"/>	
Is the COC properly relinquished by the client w/ date and time recorded? ⁽¹⁾	<input checked="" type="checkbox"/>	<input type="checkbox"/>	<input type="checkbox"/>	
Were all samples received intact? ⁽¹⁾	<input checked="" type="checkbox"/>	<input type="checkbox"/>	<input type="checkbox"/>	
Was adequate sample volume provided? ⁽¹⁾	<input checked="" type="checkbox"/>	<input type="checkbox"/>	<input type="checkbox"/>	
Does the COC agree with the number and type of sample bottles received? ⁽¹⁾	<input checked="" type="checkbox"/>	<input type="checkbox"/>	<input type="checkbox"/>	
Do the sample IDs on the bottle labels match the COC? ⁽¹⁾	<input checked="" type="checkbox"/>	<input type="checkbox"/>	<input type="checkbox"/>	
For volatiles in water – is there headspace present? If yes, contact client and note in narrative.	<input type="checkbox"/>	<input type="checkbox"/>	<input checked="" type="checkbox"/>	
Are samples preserved that require preservation (excluding cooling)? ⁽¹⁾ Note the type of preservative in the comments column – HCl, H ₂ SO ₄ , NaOH, HNO ₃ , etc.	<input type="checkbox"/>	<input type="checkbox"/>	<input checked="" type="checkbox"/>	
If samples are acid preserved for metals, is the pH ≤ 2? ⁽¹⁾ Record the pH in Comments.	<input type="checkbox"/>	<input type="checkbox"/>	<input checked="" type="checkbox"/>	
If dissolved metals are requested, were samples field filtered?	<input type="checkbox"/>	<input type="checkbox"/>	<input checked="" type="checkbox"/>	

Additional Comments (if any):

⁽¹⁾ If NO, then contact the client before proceeding with analysis and note in case narrative.

 Custodian Printed Name

12/29/23 12:23
 Date/Time



Eagle Environmental Consulting
8000 W 44th Ave
Wheat Ridge CO, 80033

Project: Civitas - Sam 25H-M166

Project Number: [none]

Project Manager: Andrew Newberry

Reported:
01/04/24 12:15

OEX-SS-03@6'
2312539-01 (Soil)

Summit Scientific

Physical Parameters by APHA/ASTM/EPA Methods, Saturated Paste Extraction

Date Sampled: **12/29/23 09:00**

Analyte	Result	Reporting		Units	Dilution	Batch	Prepared	Analyzed	Method	Notes
		Limit	MDL							
pH	8.92			pH Units	1	BHA0043	01/02/24	01/02/24	EPA 9045D	

Summit Scientific

The results in this report apply to the samples analyzed in accordance with the chain of custody document. This analytical report must be reproduced in its entirety.



Eagle Environmental Consulting
8000 W 44th Ave
Wheat Ridge CO, 80033

Project: Civitas - Sam 25H-M166

Project Number: [none]

Project Manager: Andrew Newberry

Reported:
01/04/24 12:15

OEX-SS-04@6'
2312539-02 (Soil)

Summit Scientific

Physical Parameters by APHA/ASTM/EPA Methods, Saturated Paste Extraction

Date Sampled: **12/29/23 09:05**

Analyte	Result	Reporting		Units	Dilution	Batch	Prepared	Analyzed	Method	Notes
		Limit	MDL							
pH	9.32			pH Units	1	BHA0043	01/02/24	01/02/24	EPA 9045D	

Summit Scientific

The results in this report apply to the samples analyzed in accordance with the chain of custody document. This analytical report must be reproduced in its entirety.



Eagle Environmental Consulting
8000 W 44th Ave
Wheat Ridge CO, 80033

Project: Civitas - Sam 25H-M166

Project Number: [none]

Project Manager: Andrew Newberry

Reported:

01/04/24 12:15

OEX-SS-05@6'

2312539-03 (Soil)

Summit Scientific

Physical Parameters by APHA/ASTM/EPA Methods, Saturated Paste Extraction

Date Sampled: **12/29/23 09:10**

Analyte	Result	Reporting		Units	Dilution	Batch	Prepared	Analyzed	Method	Notes
		Limit	MDL							
pH	9.09			pH Units	1	BHA0043	01/02/24	01/02/24	EPA 9045D	

Summit Scientific

The results in this report apply to the samples analyzed in accordance with the chain of custody document. This analytical report must be reproduced in its entirety.



Eagle Environmental Consulting
8000 W 44th Ave
Wheat Ridge CO, 80033

Project: Civitas - Sam 25H-M166

Project Number: [none]

Project Manager: Andrew Newberry

Reported:
01/04/24 12:15

OEX-SS-06@18'
2312539-04 (Soil)

Summit Scientific

Physical Parameters by APHA/ASTM/EPA Methods, Saturated Paste Extraction

Date Sampled: **12/29/23 09:15**

Analyte	Result	Reporting		Units	Dilution	Batch	Prepared	Analyzed	Method	Notes
		Limit	MDL							
pH	8.90			pH Units	1	BHA0043	01/02/24	01/02/24	EPA 9045D	

Summit Scientific

The results in this report apply to the samples analyzed in accordance with the chain of custody document. This analytical report must be reproduced in its entirety.



Eagle Environmental Consulting
8000 W 44th Ave
Wheat Ridge CO, 80033

Project: Civitas - Sam 25H-M166

Project Number: [none]

Project Manager: Andrew Newberry

Reported:
01/04/24 12:15

OEX-SS-07@18'
2312539-05 (Soil)

Summit Scientific

Physical Parameters by APHA/ASTM/EPA Methods, Saturated Paste Extraction

Date Sampled: **12/29/23 09:20**

Analyte	Result	Reporting		Units	Dilution	Batch	Prepared	Analyzed	Method	Notes
		Limit	MDL							
pH	9.02			pH Units	1	BHA0043	01/02/24	01/02/24	EPA 9045D	

Summit Scientific

The results in this report apply to the samples analyzed in accordance with the chain of custody document. This analytical report must be reproduced in its entirety.



Eagle Environmental Consulting
8000 W 44th Ave
Wheat Ridge CO, 80033

Project: Civitas - Sam 25H-M166

Project Number: [none]

Project Manager: Andrew Newberry

Reported:

01/04/24 12:15

OEX-SS-08@6'

2312539-06 (Soil)

Summit Scientific

Physical Parameters by APHA/ASTM/EPA Methods, Saturated Paste Extraction

Date Sampled: **12/29/23 09:25**

Analyte	Result	Reporting		Units	Dilution	Batch	Prepared	Analyzed	Method	Notes
		Limit	MDL							
pH	8.97			pH Units	1	BHA0043	01/02/24	01/02/24	EPA 9045D	

Summit Scientific

The results in this report apply to the samples analyzed in accordance with the chain of custody document. This analytical report must be reproduced in its entirety.



Eagle Environmental Consulting
8000 W 44th Ave
Wheat Ridge CO, 80033

Project: Civitas - Sam 25H-M166

Project Number: [none]

Project Manager: Andrew Newberry

Reported:
01/04/24 12:15

OEX-SS-09@18'
2312539-07 (Soil)

Summit Scientific

Physical Parameters by APHA/ASTM/EPA Methods, Saturated Paste Extraction

Date Sampled: **12/29/23 09:30**

Analyte	Result	Reporting		Units	Dilution	Batch	Prepared	Analyzed	Method	Notes
		Limit	MDL							
pH	8.92			pH Units	1	BHA0043	01/02/24	01/02/24	EPA 9045D	

Summit Scientific

The results in this report apply to the samples analyzed in accordance with the chain of custody document. This analytical report must be reproduced in its entirety.



Eagle Environmental Consulting
8000 W 44th Ave
Wheat Ridge CO, 80033

Project: Civitas - Sam 25H-M166

Project Number: [none]

Project Manager: Andrew Newberry

Reported:
01/04/24 12:15

OEX-SS-10@5'
2312539-08 (Soil)

Summit Scientific

Physical Parameters by APHA/ASTM/EPA Methods, Saturated Paste Extraction

Date Sampled: **12/29/23 09:35**

Analyte	Result	Reporting		Units	Dilution	Batch	Prepared	Analyzed	Method	Notes
		Limit	MDL							
pH	8.26			pH Units	1	BHA0043	01/02/24	01/02/24	EPA 9045D	

Summit Scientific

The results in this report apply to the samples analyzed in accordance with the chain of custody document. This analytical report must be reproduced in its entirety.



Eagle Environmental Consulting
8000 W 44th Ave
Wheat Ridge CO, 80033

Project: Civitas - Sam 25H-M166

Project Number: [none]

Project Manager: Andrew Newberry

Reported:

01/04/24 12:15

OEX-SS-11@5'

2312539-09 (Soil)

Summit Scientific

Physical Parameters by APHA/ASTM/EPA Methods, Saturated Paste Extraction

Date Sampled: **12/29/23 09:40**

Analyte	Result	Reporting		Units	Dilution	Batch	Prepared	Analyzed	Method	Notes
		Limit	MDL							
pH	11.1			pH Units	1	BHA0043	01/02/24	01/02/24	EPA 9045D	

Summit Scientific

The results in this report apply to the samples analyzed in accordance with the chain of custody document. This analytical report must be reproduced in its entirety.



Eagle Environmental Consulting
8000 W 44th Ave
Wheat Ridge CO, 80033

Project: Civitas - Sam 25H-M166

Project Number: [none]

Project Manager: Andrew Newberry

Reported:
01/04/24 12:15

OEX-SS-12@5'
2312539-10 (Soil)

Summit Scientific

Physical Parameters by APHA/ASTM/EPA Methods, Saturated Paste Extraction

Date Sampled: **12/29/23 09:45**

Analyte	Result	Reporting		Units	Dilution	Batch	Prepared	Analyzed	Method	Notes
		Limit	MDL							
pH	8.62			pH Units	1	BHA0043	01/02/24	01/02/24	EPA 9045D	

Summit Scientific

The results in this report apply to the samples analyzed in accordance with the chain of custody document. This analytical report must be reproduced in its entirety.



Eagle Environmental Consulting
8000 W 44th Ave
Wheat Ridge CO, 80033

Project: Civitas - Sam 25H-M166

Project Number: [none]

Project Manager: Andrew Newberry

Reported:
01/04/24 12:15

OEX-SS-13@5'
2312539-11 (Soil)

Summit Scientific

Physical Parameters by APHA/ASTM/EPA Methods, Saturated Paste Extraction

Date Sampled: **12/29/23 09:50**

Analyte	Result	Reporting		Units	Dilution	Batch	Prepared	Analyzed	Method	Notes
		Limit	MDL							
pH	8.93			pH Units	1	BHA0043	01/02/24	01/02/24	EPA 9045D	

Summit Scientific

The results in this report apply to the samples analyzed in accordance with the chain of custody document. This analytical report must be reproduced in its entirety.



Eagle Environmental Consulting
8000 W 44th Ave
Wheat Ridge CO, 80033

Project: Civitas - Sam 25H-M166

Project Number: [none]

Project Manager: Andrew Newberry

Reported:
01/04/24 12:15

OEX-SS-14@5'
2312539-12 (Soil)

Summit Scientific

Physical Parameters by APHA/ASTM/EPA Methods, Saturated Paste Extraction

Date Sampled: **12/29/23 09:55**

Analyte	Result	Reporting		Units	Dilution	Batch	Prepared	Analyzed	Method	Notes
		Limit	MDL							
pH	8.57			pH Units	1	BHA0043	01/02/24	01/02/24	EPA 9045D	

Summit Scientific

The results in this report apply to the samples analyzed in accordance with the chain of custody document. This analytical report must be reproduced in its entirety.



Eagle Environmental Consulting
8000 W 44th Ave
Wheat Ridge CO, 80033

Project: Civitas - Sam 25H-M166

Project Number: [none]

Project Manager: Andrew Newberry

Reported:
01/04/24 12:15

OEX-SS-15@5'
2312539-13 (Soil)

Summit Scientific

Physical Parameters by APHA/ASTM/EPA Methods, Saturated Paste Extraction

Date Sampled: **12/29/23 10:00**

Analyte	Result	Reporting		Units	Dilution	Batch	Prepared	Analyzed	Method	Notes
		Limit	MDL							
pH	9.96			pH Units	1	BHA0043	01/02/24	01/02/24	EPA 9045D	

Summit Scientific

The results in this report apply to the samples analyzed in accordance with the chain of custody document. This analytical report must be reproduced in its entirety.



Eagle Environmental Consulting
8000 W 44th Ave
Wheat Ridge CO, 80033

Project: Civitas - Sam 25H-M166

Project Number: [none]

Project Manager: Andrew Newberry

Reported:
01/04/24 12:15

OEX-SS-16@5'
2312539-14 (Soil)

Summit Scientific

Physical Parameters by APHA/ASTM/EPA Methods, Saturated Paste Extraction

Date Sampled: **12/29/23 10:05**

Analyte	Result	Reporting		Units	Dilution	Batch	Prepared	Analyzed	Method	Notes
		Limit	MDL							
pH	7.52			pH Units	1	BHA0043	01/02/24	01/02/24	EPA 9045D	

Summit Scientific

The results in this report apply to the samples analyzed in accordance with the chain of custody document. This analytical report must be reproduced in its entirety.



Eagle Environmental Consulting
8000 W 44th Ave
Wheat Ridge CO, 80033

Project: Civitas - Sam 25H-M166

Project Number: [none]

Project Manager: Andrew Newberry

Reported:

01/04/24 12:15

OEX-SS-17@5'
2312539-15 (Soil)

Summit Scientific

Physical Parameters by APHA/ASTM/EPA Methods, Saturated Paste Extraction

Date Sampled: **12/29/23 10:10**

Analyte	Result	Reporting		Units	Dilution	Batch	Prepared	Analyzed	Method	Notes
		Limit	MDL							
pH	8.07			pH Units	1	BHA0043	01/02/24	01/02/24	EPA 9045D	

Summit Scientific

The results in this report apply to the samples analyzed in accordance with the chain of custody document. This analytical report must be reproduced in its entirety.



Eagle Environmental Consulting
8000 W 44th Ave
Wheat Ridge CO, 80033

Project: Civitas - Sam 25H-M166

Project Number: [none]

Project Manager: Andrew Newberry

Reported:
01/04/24 12:15

OEX-SS-18@5'
2312539-16 (Soil)

Summit Scientific

Physical Parameters by APHA/ASTM/EPA Methods, Saturated Paste Extraction

Date Sampled: **12/29/23 10:15**

Analyte	Result	Reporting		Units	Dilution	Batch	Prepared	Analyzed	Method	Notes
		Limit	MDL							
pH	8.32			pH Units	1	BHA0043	01/02/24	01/02/24	EPA 9045D	

Summit Scientific

The results in this report apply to the samples analyzed in accordance with the chain of custody document. This analytical report must be reproduced in its entirety.



Eagle Environmental Consulting
8000 W 44th Ave
Wheat Ridge CO, 80033

Project: Civitas - Sam 25H-M166

Project Number: [none]

Project Manager: Andrew Newberry

Reported:

01/04/24 12:15

OEX-SS-19@5'
2312539-17 (Soil)

Summit Scientific

Physical Parameters by APHA/ASTM/EPA Methods, Saturated Paste Extraction

Date Sampled: **12/29/23 10:20**

Analyte	Result	Reporting		Units	Dilution	Batch	Prepared	Analyzed	Method	Notes
		Limit	MDL							
pH	8.04			pH Units	1	BHA0043	01/02/24	01/02/24	EPA 9045D	

Summit Scientific

The results in this report apply to the samples analyzed in accordance with the chain of custody document. This analytical report must be reproduced in its entirety.



Eagle Environmental Consulting
8000 W 44th Ave
Wheat Ridge CO, 80033

Project: Civitas - Sam 25H-M166

Project Number: [none]

Project Manager: Andrew Newberry

Reported:

01/04/24 12:15

OEX-SS-20@5'
2312539-18 (Soil)

Summit Scientific

Physical Parameters by APHA/ASTM/EPA Methods, Saturated Paste Extraction

Date Sampled: **12/29/23 10:25**

Analyte	Result	Reporting		Units	Dilution	Batch	Prepared	Analyzed	Method	Notes
		Limit	MDL							
pH	7.72			pH Units	1	BHA0043	01/02/24	01/02/24	EPA 9045D	

Summit Scientific

The results in this report apply to the samples analyzed in accordance with the chain of custody document. This analytical report must be reproduced in its entirety.



Eagle Environmental Consulting
8000 W 44th Ave
Wheat Ridge CO, 80033

Project: Civitas - Sam 25H-M166

Project Number: [none]

Project Manager: Andrew Newberry

Reported:
01/04/24 12:15

OEX-SS-21@5'
2312539-19 (Soil)

Summit Scientific

Physical Parameters by APHA/ASTM/EPA Methods, Saturated Paste Extraction

Date Sampled: **12/29/23 10:30**

Analyte	Result	Reporting		Units	Dilution	Batch	Prepared	Analyzed	Method	Notes
		Limit	MDL							
pH	8.22			pH Units	1	BHA0043	01/02/24	01/02/24	EPA 9045D	

Summit Scientific

The results in this report apply to the samples analyzed in accordance with the chain of custody document. This analytical report must be reproduced in its entirety.



Eagle Environmental Consulting
8000 W 44th Ave
Wheat Ridge CO, 80033

Project: Civitas - Sam 25H-M166

Project Number: [none]

Project Manager: Andrew Newberry

Reported:

01/04/24 12:15

OEX-FS-03@20'

2312539-20 (Soil)

Summit Scientific

Physical Parameters by APHA/ASTM/EPA Methods, Saturated Paste Extraction

Date Sampled: **12/29/23 10:35**

Analyte	Result	Reporting		Units	Dilution	Batch	Prepared	Analyzed	Method	Notes
		Limit	MDL							
pH	8.66			pH Units	1	BHA0043	01/02/24	01/02/24	EPA 9045D	

Summit Scientific

The results in this report apply to the samples analyzed in accordance with the chain of custody document. This analytical report must be reproduced in its entirety.



Eagle Environmental Consulting
8000 W 44th Ave
Wheat Ridge CO, 80033

Project: Civitas - Sam 25H-M166

Project Number: [none]

Project Manager: Andrew Newberry

Reported:
01/04/24 12:15

OEX-FS-04@6'
2312539-21 (Soil)

Summit Scientific

Physical Parameters by APHA/ASTM/EPA Methods, Saturated Paste Extraction

Date Sampled: **12/29/23 10:40**

Analyte	Result	Reporting		Units	Dilution	Batch	Prepared	Analyzed	Method	Notes
		Limit	MDL							
pH	8.78			pH Units	1	BHA0095	01/03/24	01/03/24	EPA 9045D	

Summit Scientific

The results in this report apply to the samples analyzed in accordance with the chain of custody document. This analytical report must be reproduced in its entirety.



Eagle Environmental Consulting
8000 W 44th Ave
Wheat Ridge CO, 80033

Project: Civitas - Sam 25H-M166

Project Number: [none]

Project Manager: Andrew Newberry

Reported:

01/04/24 12:15

OEX-FS-05@6'
2312539-22 (Soil)

Summit Scientific

Physical Parameters by APHA/ASTM/EPA Methods, Saturated Paste Extraction

Date Sampled: **12/29/23 10:45**

Analyte	Result	Reporting		Units	Dilution	Batch	Prepared	Analyzed	Method	Notes
		Limit	MDL							
pH	8.91			pH Units	1	BHA0095	01/03/24	01/03/24	EPA 9045D	

Summit Scientific

The results in this report apply to the samples analyzed in accordance with the chain of custody document. This analytical report must be reproduced in its entirety.



Eagle Environmental Consulting
8000 W 44th Ave
Wheat Ridge CO, 80033

Project: Civitas - Sam 25H-M166

Project Number: [none]

Project Manager: Andrew Newberry

Reported:
01/04/24 12:15

OEX-FS-06@6'
2312539-23 (Soil)

Summit Scientific

Physical Parameters by APHA/ASTM/EPA Methods, Saturated Paste Extraction

Date Sampled: **12/29/23 10:50**

Analyte	Result	Reporting		Units	Dilution	Batch	Prepared	Analyzed	Method	Notes
		Limit	MDL							
pH	9.06			pH Units	1	BHA0095	01/03/24	01/03/24	EPA 9045D	

Summit Scientific

The results in this report apply to the samples analyzed in accordance with the chain of custody document. This analytical report must be reproduced in its entirety.



Eagle Environmental Consulting
8000 W 44th Ave
Wheat Ridge CO, 80033

Project: Civitas - Sam 25H-M166

Project Number: [none]

Project Manager: Andrew Newberry

Reported:
01/04/24 12:15

OEX-FS-07@6'
2312539-24 (Soil)

Summit Scientific

Physical Parameters by APHA/ASTM/EPA Methods, Saturated Paste Extraction

Date Sampled: **12/29/23 10:55**

Analyte	Result	Reporting		Units	Dilution	Batch	Prepared	Analyzed	Method	Notes
		Limit	MDL							
pH	8.74			pH Units	1	BHA0095	01/03/24	01/03/24	EPA 9045D	

Summit Scientific

The results in this report apply to the samples analyzed in accordance with the chain of custody document. This analytical report must be reproduced in its entirety.



Eagle Environmental Consulting
8000 W 44th Ave
Wheat Ridge CO, 80033

Project: Civitas - Sam 25H-M166

Project Number: [none]

Project Manager: Andrew Newberry

Reported:
01/04/24 12:15

OEX-FS-08@6'
2312539-25 (Soil)

Summit Scientific

Physical Parameters by APHA/ASTM/EPA Methods, Saturated Paste Extraction

Date Sampled: **12/29/23 11:00**

Analyte	Result	Reporting		Units	Dilution	Batch	Prepared	Analyzed	Method	Notes
		Limit	MDL							
pH	8.75			pH Units	1	BHA0095	01/03/24	01/03/24	EPA 9045D	

Summit Scientific

The results in this report apply to the samples analyzed in accordance with the chain of custody document. This analytical report must be reproduced in its entirety.



Eagle Environmental Consulting
8000 W 44th Ave
Wheat Ridge CO, 80033

Project: Civitas - Sam 25H-M166

Project Number: [none]

Project Manager: Andrew Newberry

Reported:

01/04/24 12:15

OEX-FS-09@6'
2312539-26 (Soil)

Summit Scientific

Physical Parameters by APHA/ASTM/EPA Methods, Saturated Paste Extraction

Date Sampled: **12/29/23 11:05**

Analyte	Result	Reporting		Units	Dilution	Batch	Prepared	Analyzed	Method	Notes
		Limit	MDL							
pH	8.77			pH Units	1	BHA0095	01/03/24	01/03/24	EPA 9045D	

Summit Scientific

The results in this report apply to the samples analyzed in accordance with the chain of custody document. This analytical report must be reproduced in its entirety.



Eagle Environmental Consulting
8000 W 44th Ave
Wheat Ridge CO, 80033

Project: Civitas - Sam 25H-M166

Project Number: [none]

Project Manager: Andrew Newberry

Reported:
01/04/24 12:15

Physical Parameters by APHA/ASTM/EPA Methods, Saturated Paste Extraction - Quality Control

Summit Scientific

Analyte	Reporting			Spike	Source		%REC		RPD	
	Result	Limit	Units	Level	Result	%REC	Limits	RPD	Limit	Notes

Batch BHA0043 - General Preparation

LCS (BHA0043-BS1)

Prepared & Analyzed: 01/02/24

pH	9.00		pH Units	9.18	98.0	95-105
----	------	--	----------	------	------	--------

Duplicate (BHA0043-DUP1)

Source: 2312539-01

Prepared & Analyzed: 01/02/24

pH	9.12		pH Units	8.92		2.22	20
----	------	--	----------	------	--	------	----

Batch BHA0095 - General Preparation

LCS (BHA0095-BS1)

Prepared & Analyzed: 01/03/24

pH	9.21		pH Units	9.18	100	95-105
----	------	--	----------	------	-----	--------

Duplicate (BHA0095-DUP1)

Source: 2312018-08

Prepared & Analyzed: 01/03/24

pH	8.42		pH Units	8.39		0.357	20
----	------	--	----------	------	--	-------	----

Summit Scientific

The results in this report apply to the samples analyzed in accordance with the chain of custody document. This analytical report must be reproduced in its entirety.



Eagle Environmental Consulting
8000 W 44th Ave
Wheat Ridge CO, 80033

Project: Civitas - Sam 25H-M166

Project Number: [none]
Project Manager: Andrew Newberry

Reported:
01/04/24 12:15

Notes and Definitions

DET	Analyte DETECTED
ND	Analyte NOT DETECTED at or above the reporting limit
NR	Not Reported
dry	Sample results reported on a dry weight basis
RPD	Relative Percent Difference