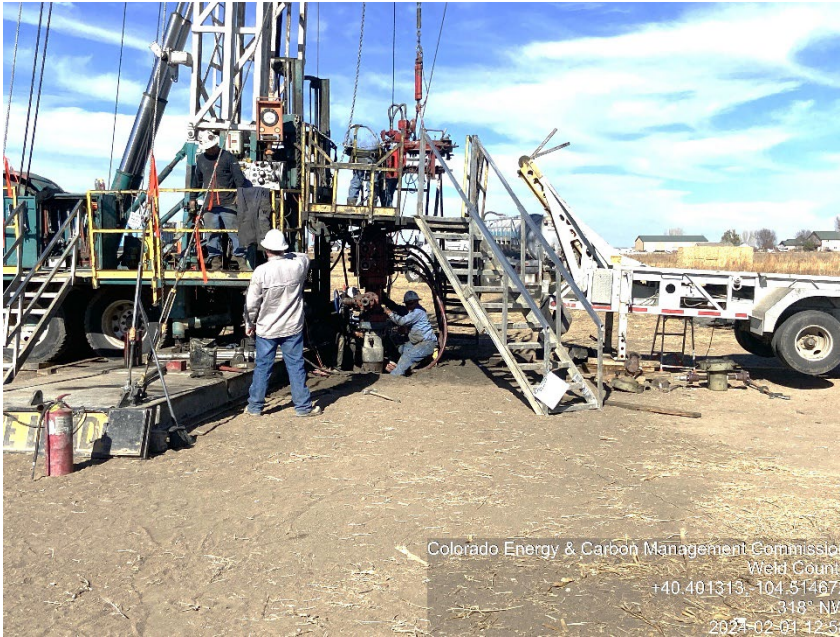


## Inspection Photos

Location Name: HOLMAN-65N64W/14SWNE

Location #: 323370



**Photo #1**

**Holman 14-1 (123-12922) Wellsite**  
**Plugged & Abandoned | PA**  
**Plugging Ops; Cementing: cmt-surf**



**Photo #2**

**Holman 14-1 Wellsite**  
**Plugged & Abandoned | PA**  
**Plugging Ops; Cementing: cmt-surf**





**Inspection Photos**  
**Location Name: HOLMAN-65N64W/14SWNE**  
**Location #: 323370**



**Photo #3**

**Holman 14-1 Wellsite**  
**Plugged & Abandoned | PA**  
**Plugging Ops; Cementing: cmt-surf**  
*Site safety signage*  
*prior photo*



**Photo #4**

**Holman 14-1 Wellsite**  
**Plugged & Abandoned | PA**  
**Plugging Ops; Cementing: cmt-surf**  
*Wellsite entrance*  
*prior photo*





# Inspection Photos

Location Name: HOLMAN-65N64W/14SWNE  
Location #: 323370

**job safety analysis (JSA) form**  
roles, contingency and response

Date and Time: 2/1/24 6:25 AM  
Location Name: HOLMAN 14-1  
Weather: 31° F, 3 mi/h, 0%  
Dial 911 for Emergencies  
NEAREST MEDICAL CENTER: Colorado Medical Attention  
Platte Valley Medical Center (970) 800-4333  
Staring Regional Medical Center (970) 522-9929  
Location-Specific Notes: Holes, Trip, Hazards  
Work Crew Sign-In: Eric Benes, Axel Gonzalez, Fernando Arango, Jose Sepulveda, Ben Villarreal  
Person in Charge: Eric Benes  
Colorado Energy & Carbon Management Commission  
Weld County  
+40.401371-104.514315  
126° SE  
2024-02-01 14:03

Photo #5

Holman 14-1 Wellsite  
Plugged & Abandoned | PA  
Plugging Ops; Cementing: cmt-surf  
JSA: 2024-02-01



Photo #6

Holman 14-1 Battery site  
Plugged & Abandoned | PA  
Plugging Ops; Cementing: cmt-surf  
Battery sign  
prior photo

