

# **SITE SAFETY AND EMERGENCY RESPONSE PLAN**



**Crestone Peak Resources Operating LLC**

**District Office  
650 Southgate Drive  
Windsor, CO 80550**

**Lussing Trust North Pad**

**CITY OF AURORA, COLORADO**

## **Table of Contents**

### **Section 1 – Signature Page**

### **Section 2 – Site specific information**

- a. Site Safety Requirements**
- b. Emergency muster/assembly point(s)**
- c. 911 Address and GPS coordinates**
- d. Site description**
- e. Nearby schools and other High Occupancy Buildings**
- f. Directions to project locations**
- g. Location of SDS sheets**
- h. Location of sign-in sheets, JSA, safety forms**

### **Section 3 – Maps & Documents**

- a) Site Map**
  - i. 250', 500', 1,000' Buffer zones and location of nearest Building Unit(s)**
  - ii. Access Map and Muster point(s)**
  - iii. 2500' Buffer zone**

### **Section 4 – List of Emergency Contacts**

- a) Crestone Peak Resources contact information.**
- a) Crestone Peak Resources community/media relations contact information**
- b) First responder contact information**
- c) Regulatory contact information**
- d) Nearest hospital**
- e) Spill response organization contact information.**

### **Section 5 – Spill Response and Reporting**

- a) Spill Response**
- b) Spill Reporting**

### **Section 6 – Reportable storage quantity's**


- a) Reportable quantities**
- b) Tier II Reporting**

### **Section 7 – Evacuation Information**

- a) Evacuation plan procedures (public)**

### **Section 8 – Coordination with First Responder Agencies**

**SECTION 1**  
**SITE SPECIFIC INFORMATION**

Crestone Peak Resources			
Name	Signature	Title	Date
Danny Knutson		ICS and Contractor Management	2-14-23

## **SECTION 2**

### **SITE SPECIFIC INFORMATION**

**a) Site Safety Requirements and General Information**

The minimum personal protective equipment (PPE) to enter any Crestone Peak Resources production location includes hard hat, safety glasses, safety toe boots, fire resistant clothing (FRC), and a 4-gas monitor. All contractors and visitors are responsible for providing their employees with the appropriate training on and use of PPE while on Crestone Peak Resources locations. In addition, all contract personnel entering a Crestone Peak Resources location to perform work must understand and abide by Crestone Peak Resources' contractor expectations relating to environmental, health, and safety requirements.

The primary hazards that any person must be aware of while on a Crestone Peak Resources production location include, but are not limited to, the potential for release of hydrocarbon gases and/or liquids from production equipment/tanks, heavy truck and equipment traffic, loud noise, high pressures, and the potential for a flash fire. These hazards can vary depending on the work being performed.

**b) Emergency Muster/Assembly point(s)**

**Lussing Trust North Pad**

Muster point is at the entrance to location. Muster locations will be identified during all safety briefings.

**c) 911 Address and GPS coordinates**

**Facility ID#** – Pending

**Legal Description** – W/2NW/4, Section 19 T4S-R64W 6th P.M.

**Address** – TBD

**Lat/Long:** LATITUDE = 39°40'23.2782"N, LONGITUDE = 104°36'6.3936"W      Elevation: 5695'

**d) Site description**

The **Lussing Trust North Pad** is a Crestone Peak Resources oil and gas production facility that will have 7 horizontal oil and gas wells. There will be four (4) 500bbl oil storage tanks and two (2) 500bbl produced water product storage tanks on location.

**e) Nearby schools and other High Occupancy Buildings**

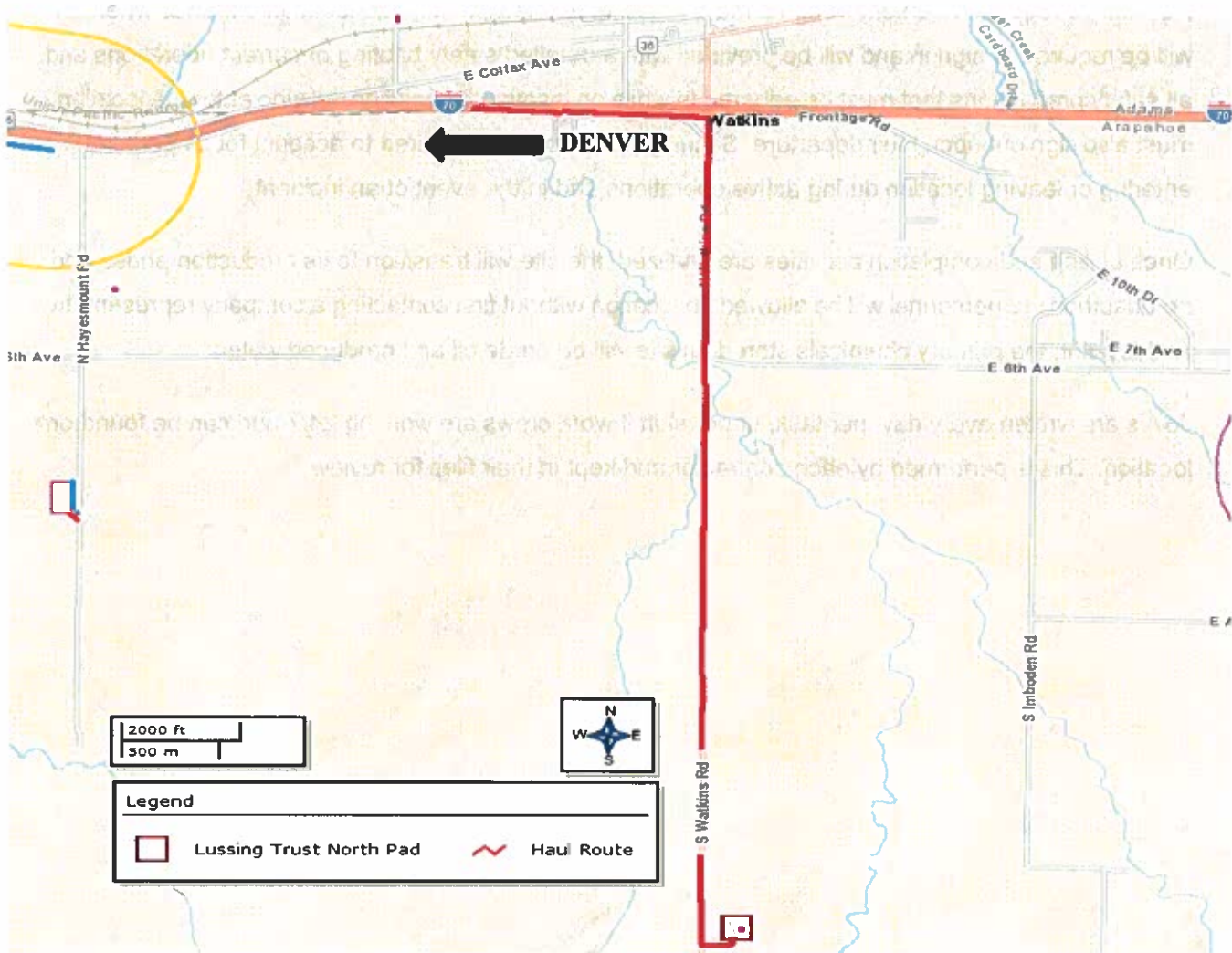
No Schools near this location

No Residences near this location

**f) Directions to Project Locations**

**Lussing Trust North Pad** – PROCEED IN AN EASTERLY DIRECTION FROM DENVER, COLORADO ALONG INTERSTATE 70 APPROXIMATELY 21.0 MILES TO THE JUNCTION OF INTERSTATE 70 AND EXIT 295 TO THE SOUTHEAST; EXIT RIGHT AND PROCEED IN A SOUTHEASTERLY DIRECTION APPROXIMATELY 0.2 MILES TO THE JUNCTION OF EXIT 295 AND WATKINS ROAD/COUNTY ROAD 97 TO THE SOUTH; TURN RIGHT AND PROCEED IN A SOUTHERLY DIRECTION APPROXIMATELY 3.3 MILES TO THE JUNCTION OF WATKINS ROAD/COUNTY ROAD 97 AND THE PROPOSED ACCESS ROAD TO THE EAST; TURN LEFT AND FOLLOW ROAD FLAGS IN AN EASTERLY DIRECTION APPROXIMATELY 637 FEET TO THE PROPOSED LOCATION. TOTAL DISTANCE FROM DENVER, COLORADO TO THE PROPOSED LOCATION IS APPROXIMATELY 24.6 MILES.

**Map:**



**g) Location of SDS sheets**

Depending on the operations taking place on location, the chemicals that may be present will vary. Regardless, hazard communication is a critical safety measure and Safety Data Sheets (SDS's) will be available from the Company Representative present or the contractor performing work on location. All SDS sheets are available through the following link, but can only be accessed by Civitas employees- <https://chemmanagement.ehs.com/9/52B6C4F1-9454-4F70-86F1-15370D01243A>

**h) Sign-In Sheets, JSAs, and Safety Forms**

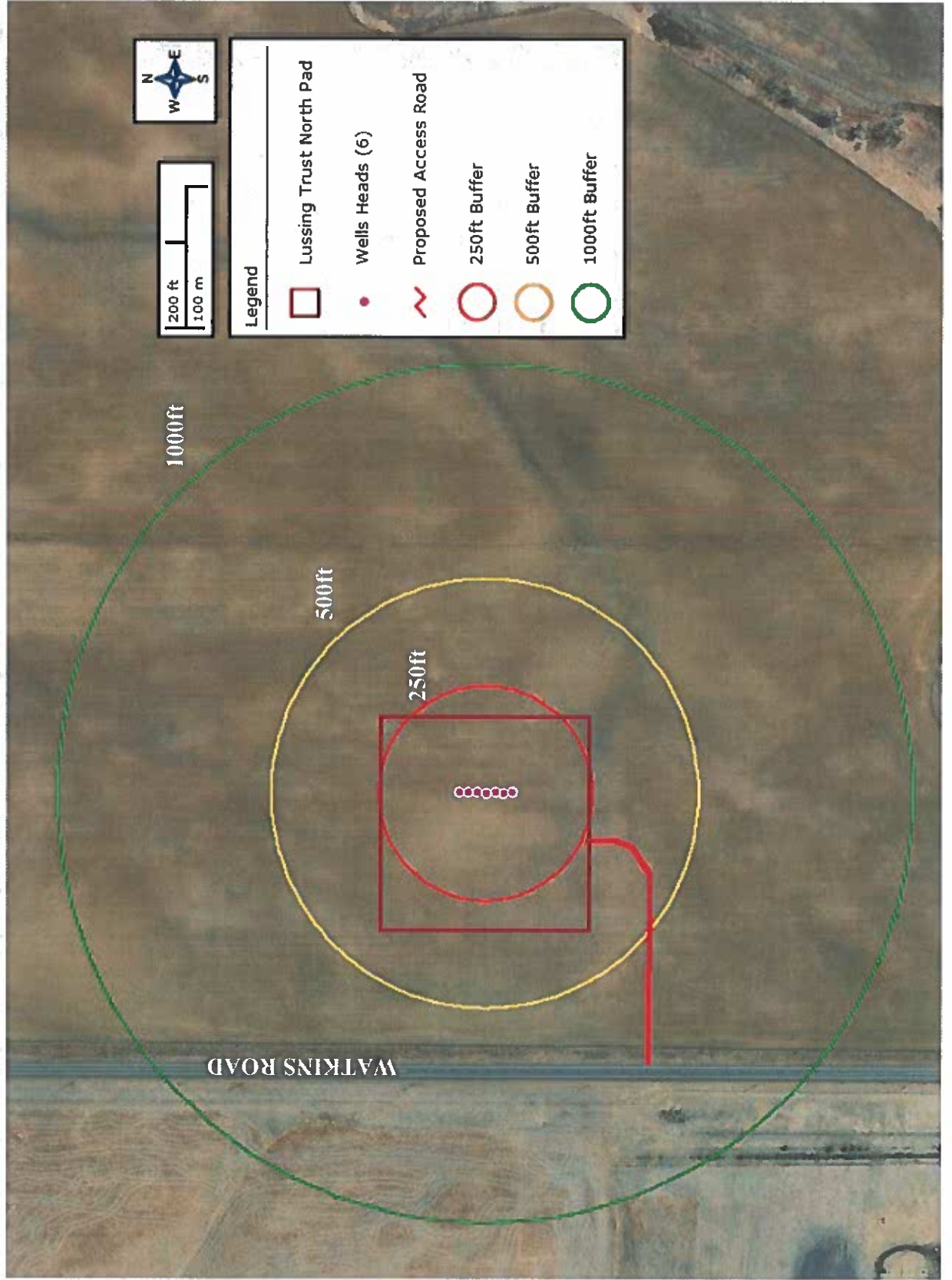
During drilling and completion activities all employees and approved visitors to the **Lussing Trust North Pad** will be required to enter through a manned security checkpoint at the location entrance where they will be required to sign in and will be provided with a detailed safety briefing of current operations and all safety precautions that must be adhered to while on location. In addition, all who enter the location must also sign out upon their departure. Security personnel are required to account for all persons entering or leaving location during active operations and in the event of an incident.

Once drilling and completion activities are finalized, the site will transition to its production phase and no unauthorized personnel will be allowed on location without first contacting a company representative. At this point, the primary chemicals stored on site will be crude oil and produced water.

JSA's are written every day, per task, or per shift if work crews are working 24/7 and can be found on location. This is performed by each contractor and kept in their files for review.

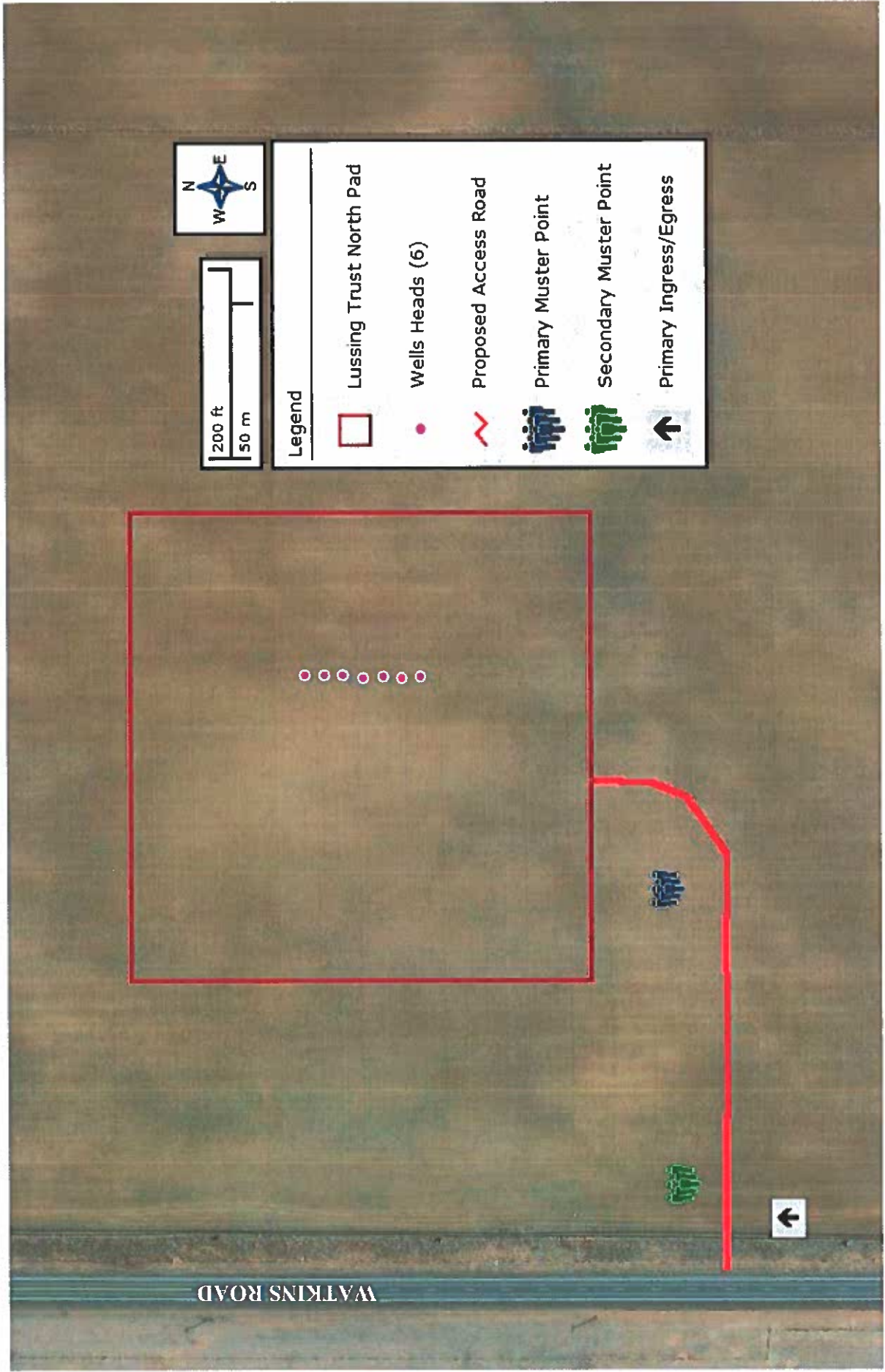
### Section 3

#### Lussing Trust North Pad 250', 500', 1,000' Buffer



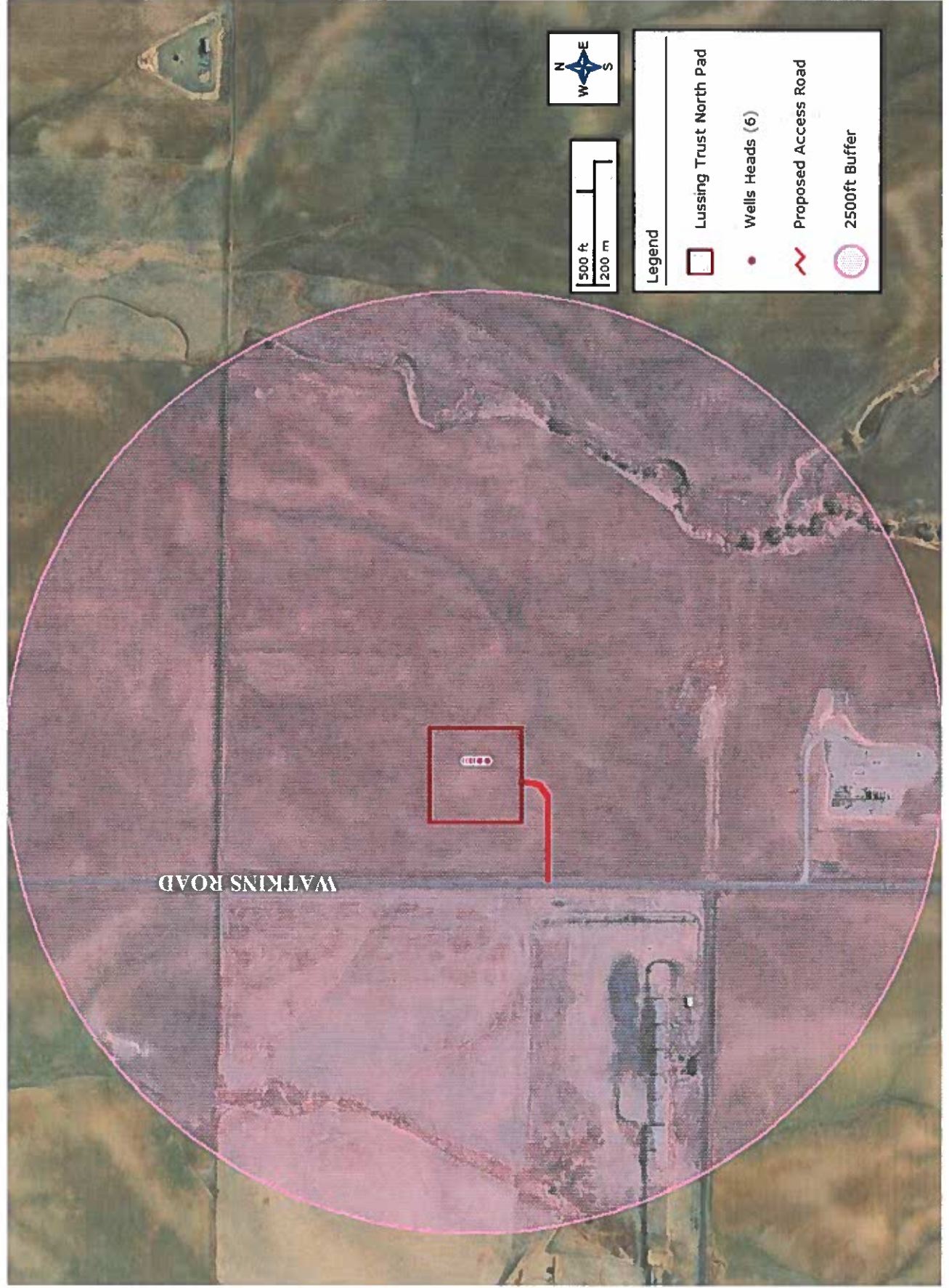


Lussing Trust North Pad Access Map and Muster Point





## 2500 Foot Buffer Area Map



**Section 4**  
**List of Emergency Contacts**

**a) Crestone Peak Resources**

Name	Office Phone	Emergency/Cell
650 Southgate Drive Windsor, CO 80550	303-294-9100	303-659-7740
Crestone Peak Resources EHS on call emergency number	NA	303-659-7740
EHS Director Bryan Mickiewicz	NA	720-539-9978
EHS – Safety: Danny Knutson	NA	970-309-7510
EHS – Environmental Luke Kelly	303-294-7831	720-315-8934

**b) Crestone Peak Resources community/media relations**

Name	Office	Cell Phone
Brian Kain	303-312-8518	281-825-2010

**c) First Responders**

Name	Emergency	Non-Emergency Dispatch	Office Number
Aurora Fire Department	911	303-627-3100	303-326-8999
Aurora Police Department	911	303-627-3100	303-739-6000
Aurora OEM	911	303-627-3100	303-739-7000
Colorado State Patrol	911	303-239-4501	719-775-2964

**d) Regulator Contacts**

Name	Office Phone	Cell Phone
COGCC	303-894-2100	none
CDPHE	877-518-5608	none
Colorado Parks & Wildlife	303-291-7227	none
National Response Center	800-424-8802	none

**e) Medical Facilities**

Name	Office Phone	Cell Phone
University of Colorado Hospital	720-848-0000	N/A
The Medical Center of Aurora - South	303-360-0242	N/A
Parker Adventist Hospital	(303) 269-4000	N/A

**f) Spill Response Organization**

Name	24/7 Emergency	Cell Phone
EnviroServe	800-488-0910	N/A
CES	800-310-7445	N/A

**g) Fire, explosion, associated with loss of well control.**

Name	Office Phone
Aurora Fire Department	911 or 303-326-8999
Wild Well Control, Inc.	281-353-5481
Northern Colorado Medical Facility (Burn Unit)	970-810-4121
Aurora Office of Emergency Management	303-739-7000

**h) Government Agencies**

Name	Office Phone
Aurora Police Department	911 or 303-739-6000
COGCC	303-894-2100
CDPHE	877-518-5608
Aurora OEM	303-739-7000
Arapahoe County LEPC	lepc@arapahoegov.com
Colorado Department of Public Health and Environment	<a href="https://cdphe.colorado.gov/ceos">https://cdphe.colorado.gov/ceos</a>

**i) Railroad Emergency Response**

Name	Office Phone
NA	NA

## **Section 5**

### **Spill Response and Clean Up**

#### **a) Spill Response**

There are multiple types of hydrocarbons which can be released/spilled during oil and gas production and exploration. Most commonly released are unrefined products such as crude oil and produced water. Refined petroleum products such as diesel, gasoline, and motor oil spills are less common, but still equally important to mitigate. If a spill is found reportable, it will be mitigated in accordance with Colorado Oil and Gas Conservation Commission (COGCC) and Colorado Department of Public Health and Environment (CDPHE) guidelines.

Once a release has been identified, it will be immediately stopped and contained if possible and is safe to do so. When containing a spill; pig blankets, snakes, absorbent materials, or earthen berms will be constructed around the release to keep material from spreading. These materials will be provided by response contractors and the contracted service company and kept on-site. Diligent efforts will be made to minimize contact with live vegetation or open water if release is outside of secondary containment structures.

In the event of a large incident requiring outside assistance, Crestone Peak Resources has contracted with Wild Well Control who possesses a working knowledge of oil and gas operations, emergency response and Incident Command. Once notified Wild Well Control personnel can be on location from 6 to 12 hours.

#### **b) Spill Reporting**

What determines a reportable spill and to whom does the report go?

- Spill and leaks shall be reported to the local fire department by using 911 in accordance with the provisions contained in the adopted International Fire Code.
  - ***IFC § 5704.2.7.10 Leak reporting.*** *A consistent or accidental loss of liquid, or other indication of a leak from a tank or system, shall be reported immediately to the fire department, the fire code official and other authorities having jurisdiction.*
- A spill/release will be reported to the COGCC if released material is property of Crestone Peak Resources and meets the COGCC reporting thresholds (see below), an example would be crude oil released from a separator or produced water from a water vault.
- A spill/release will be reported to the Arapahoe County LEPC if released material is

property of Crestone Peak Resources and meets the COGCC reporting thresholds (see below),

- A spill/release will be reported to the CDPHE if released material is in the custody of a third party for spills that meet CDPHE reporting thresholds, are of any size that impact or threaten to impact waters of the state, a residence or occupied structure, livestock or public byway. An example would be an oil hauler over filling a truck and spills product onto the ground next to a flowing irrigation ditch.

Spills are reportable to the COGCC in the following circumstances:

1. the spill or release impacts or threatens to impact any waters of the state, a residence or occupied structure, livestock, or a public byway.
2. a spill or release in which 1 barrel or more is released outside of berms or other secondary containment; or
3. any spill or release of 5 barrels or more. If the spill impacts or threatens to impact waters of the state (which include surface water, ground water and dry gullies or storm sewers leading to surface water), it must also be reported immediately to CDPHE (25-8-601 CRS).
4. Petroleum releases of 25 gallons or more

Once a spill is determined reportable, there is a 24-hour deadline to make initial notification to the COGCC or CDPHE depending on product ownership. Spills/releases in the custody of Crestone Peak Resources will be reported by a Company representative. Spills/releases in the custody of a third party will be reported by the responsible company's EHS Department to the appropriate agency and to Crestone Peak Resources.

These regulatory guidelines will be strictly followed by Crestone Peak Resources and any contractors operating under Crestone Peak Resources guidance during all activities. Refer to the SPCC Plan for additional information regarding spill response.

## **Section 6**

### **Reportable quantities**

**a) Reportable quantities**

Mandated by Section 312 of the Emergency Planning and Community Right-To-Know Act (EPCRA) – also known as SARA Title III – the Tier II form captures information about the types, quantities, and locations of hazardous chemicals at a given facility. The form also lists contact information for the facility's designated emergency point-of-contact.

Any facility that is required to maintain MSDSs (or SDSs) under the Occupational Safety and Health Administration (OSHA) regulations for hazardous chemicals stored or used in the workplace.

Facilities with chemicals in quantities that equal or exceed the lists of lists thresholds must report.

Propane, benzene, propene, and methane are on the lists and are known to be in crude oil. In addition, diesel is on the lists and may be stored on sites during construction.

**b. Reportable requirements**

If your facility will meet the requirements under 40 CFR, you must submit your Tier II report to the state every year before March 1<sup>st</sup>.

These regulatory guidelines will be strictly followed by Crestone Peak Resources and any contractors operating under Crestone Peak Resources guidance during all activities.



## **Section 7**

### **Evacuation Information**

#### **a. Evacuation Plan Procedures (public)**

The procedure to be used in alerting nearby persons in the event of any occurrence that could pose a threat to life or property will be arranged and completed with public officials in detail.

In the event of an actual emergency, the following steps will be immediately taken:

1. The Crestone Peak Resources representative will immediately notify proper authorities, including the sheriff's office, highway patrol, and any other public officials as described above and will enlist their assistance in warning residents and transients in the calculated radius of exposure.
2. The Crestone Peak Resources will coordinate with local authorities to warn residents' downwind of the location and within radius of exposure from the well site. Additional evacuation zones may be necessary as the situation warrants.
3. The Crestone Peak Resources representative will coordinate with appropriate emergency personnel to divert traffic in the vicinity away from the potentially dangerous area. No trespassing and warning signs will be posted at the entrance to the well site. The contract company will monitor essential and non-essential traffic on-site.
4. General:
  - a. The area included within the radius of exposure is the zone with the maximum potential hazard. When it is determined that conditions exist which create an additional area (beyond the initial zone of maximum potential hazard) vulnerable to possible hazard, public areas in the additional hazardous area will be evacuated.
  - b. In the event of a disaster, after the public areas have been evacuated and traffic stopped, it is expected that local civil authorities will have arrived and within a few hours will have assumed direction of and control of the public, including all public areas. Crestone Peak Resources will fully cooperate with these authorities and will exert every effort by careful advice to such authorities to prevent panic or rumors.
  - c. Crestone Peak Resources will dispatch appropriate personnel to the disaster site as soon as possible. The company's personnel will cooperate with and provide such information to civil authorities as they might require.

## **Section 8**

### **Coordination with First Responder Agencies**

- a) Crestone Peak Resources will communicate site construction, drill spud, completion operations and Production Turn-In-Line dates to the Aurora Fire Department and the Aurora Office of Emergency Management for coordination/communication with local first responders. These start dates will be provided a minimum of 7 business days prior to commencement or change in oil and gas development operations.
- b) In the event of an emergency requiring First Responders, Unified Command will be established between the Crestone Peak Resources appointed company man on location and First Responders present. Unified Command post will be established based on conditions present at time of incident.
- c) Bennett Fire District owns a foam cache at the Crestone Peak Hub facility at 1614 Manilla Rd, which could be utilized for mutual aid if needed. Additionally, Crestone Peak Resources is an active member of Colorado Preparedness and Response Network (CPRN), which maintains a record of available foam throughout the DJ Basin and is available to support an incident with additional foam if needed.
- d) Crestone Peak Resources EHS representative and first responders identified in this Site Safety and Emergency Action Plan have reviewed this plan and discussed coordination efforts in the event of an emergency requiring first responder assistance.



## CRESTONE PEAK RESOURCES

### LUSSING TRUST NORTH PAD

CITY OF AURORA

W/2NW/4, Section 19 T4S-R64W 6th P.M.

ADDRESS: TBD

LAT: 39°40'27.61"N LONG: -104°36'12.45"W

ELEVATION 5695 FT

### DIRECTIONS:

PROCEED IN AN EASTERLY DIRECTION FROM DENVER, COLORADO ALONG INTERSTATE 70 APPROXIMATELY 21.0 MILES TO THE JUNCTION OF INTERSTATE 70 AND EXIT 295 TO THE SOUTHEAST, EXIT RIGHT AND PROCEED IN A SOUTHEASTERLY DIRECTION APPROXIMATELY 0.2 MILES TO THE JUNCTION OF EXIT 295 AND WATKINS ROAD/COUNTY ROAD 97 TO THE SOUTH. TURN RIGHT AND PROCEED IN A SOUTHERLY DIRECTION APPROXIMATELY 3.3 MILES TO THE JUNCTION OF WATKINS ROAD/COUNTY ROAD 97 AND THE PROPOSED ACCESS ROAD TO THE EAST; TURN LEFT AND FOLLOW ROAD FLAGS IN AN EASTERLY DIRECTION APPROXIMATELY 637 FEET TO THE PROPOSED LOCATION.

### NOTIFICATIONS:

-NATIONAL RESPONSE CENTER

800-424-8802

-CRESTONE PEAK EMERGENCY RESPONSE NUMBER

303-659-7740

-EMERGENCIES- 911

-AURORA FIRE DEPARTMENT

303-326-8999

-AURORA POLICE DEPARTMENT

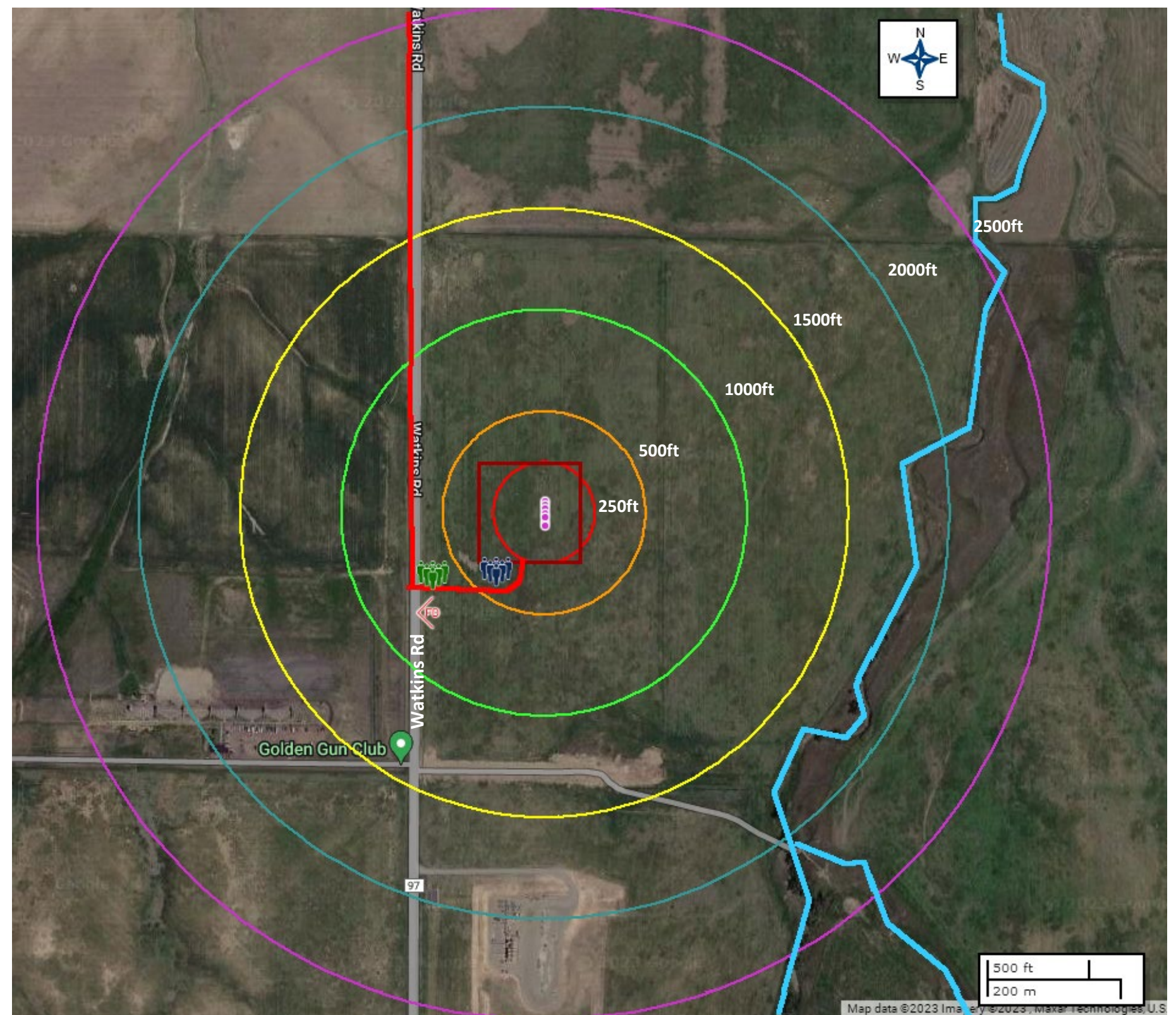
303-739-6000

-UNIVERSITY OF COLORADO HOSPITAL

720-848-0000

### CRITICAL RECEPTORS:

CREEK



### Legend

Well Heads (7)	Lussing Trust North Pad	Fire and Main Access
Primary Muster Point	Secondary Muster Point	Haul Route
250ft Buffer	500ft Buffer	1000ft Buffer
1500ft Buffer	2000ft Buffer	2500ft Buffer
Creek (critical receptor)		