

LEGEND

HP	HIGH POINT ELEVATION
6	WELL PAD CORNER STAKE
F-0.7' EL-17.0'	DESIGN "C" CUT OR "F" FILL AT CORNER STAKE (TRUNCATED LESS 5,600 FEET)
DD	DIVERSION DITCH
ECB	EROSION CONTROL BLANKET
IP	INLET PROTECTION
IPC	RRB FOR CULVERT PROTECTION
RS	ROCK SOCKS/MATTLES
RRR	OUTLET PROTECTION
OP	SEDIMENT BASIN
SB	SEDIMENT BASIN
SCL	SEDIMENT CONTROL LOG
SM	SEEDING AND MULCHING
BM	BERM
SF	SILT FENCE
CF	CONSTRUCTION FENCE
PROPOSED WILDLIFE FENCE	
OHP	EXISTING OVERHEAD POWER
BP	EXISTING BURIED POWER
X	EXISTING FENCE
T	EXISTING BURIED TELEPHONE LINE
-00000-	EXISTING MAJOR CONTOUR
-00000-	EXISTING MINOR CONTOUR
-00000-	PROPOSED MAJOR CONTOUR
-00000-	PROPOSED MINOR CONTOUR
---	WORKING PAD SURFACE
---	OIL & GAS LOCATION

SEDIMENT BASIN 1 -
STANDARD BASIN - DEPTH 4'
TRIB. AREA: 7.0 AC
VOL. REQ'D: 25,342 CF
VOL. PROVIDED: 28,628 CF
BTM WIDTH (W) 60' X 120'
BTM EL: 5688.6'
LOWEST ORIFICE EL: 5689.9'
SPILLWAY CREST EL: 5691.6'
SPILLWAY CREST LENGTH (CL): 15'
EMBANKMENT CREST EL: 5692.6'
8" RISER PIPE
WITH HOLE DIAMETER (HD): 25/32"

APPROXIMATE SURFACE DISTURBANCE AREAS	
	ACRES
WORKING PAD SURFACE DISTURBANCE	±5.57
CONSTRUCTION DISTURBANCE	±6.06
TOTAL OIL & GAS LOCATION	±11.63

- NOTES:**
- Rounded corners shown at 35' radius.
 - Construct diversion ditches as needed.
 - Contours shown at 1' intervals.
 - Cut/Fill slopes 4:1 (Typ.).
 - Overall working pad surface = 500' x 485'

UELS, LLC
Corporate Office * 85 South 200 East
Vernal, UT 84078 * (435) 789-1017



REV: 2 09-06-23 P.M. (TWO DECIMAL DISTURBANCE)

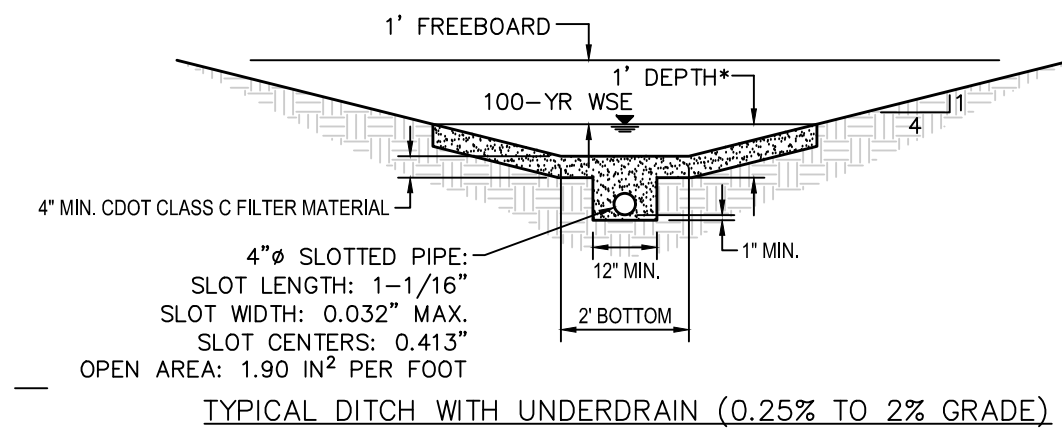
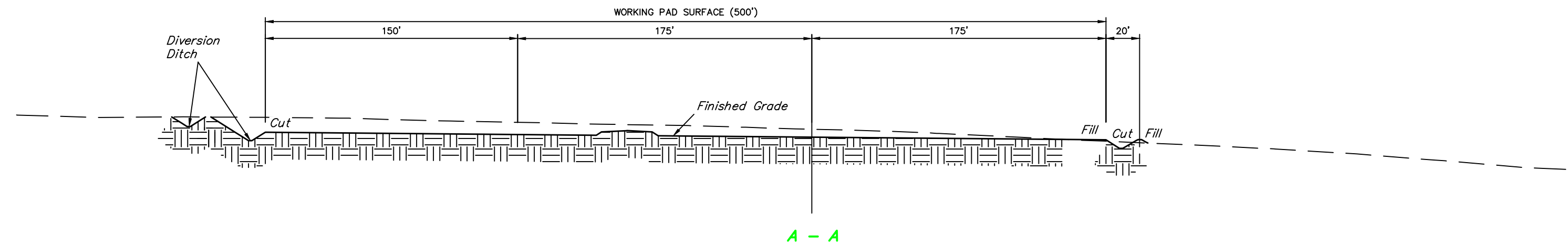
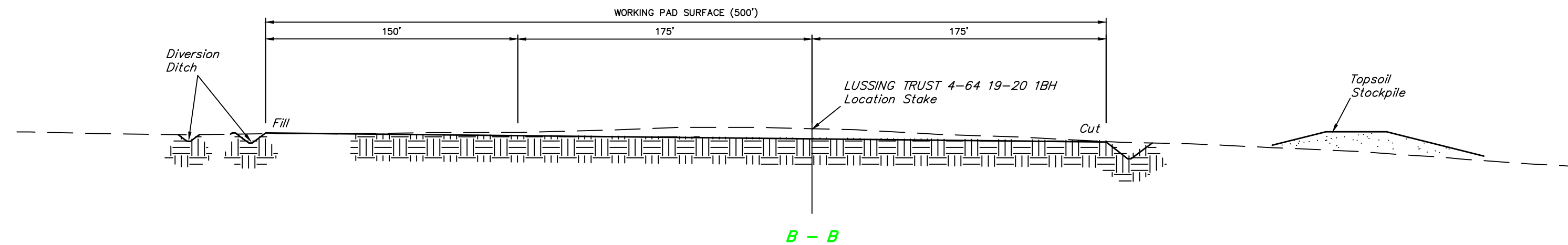
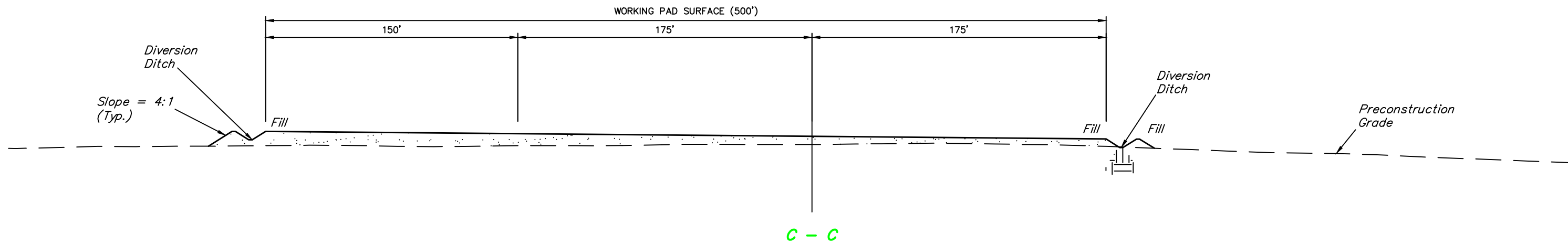
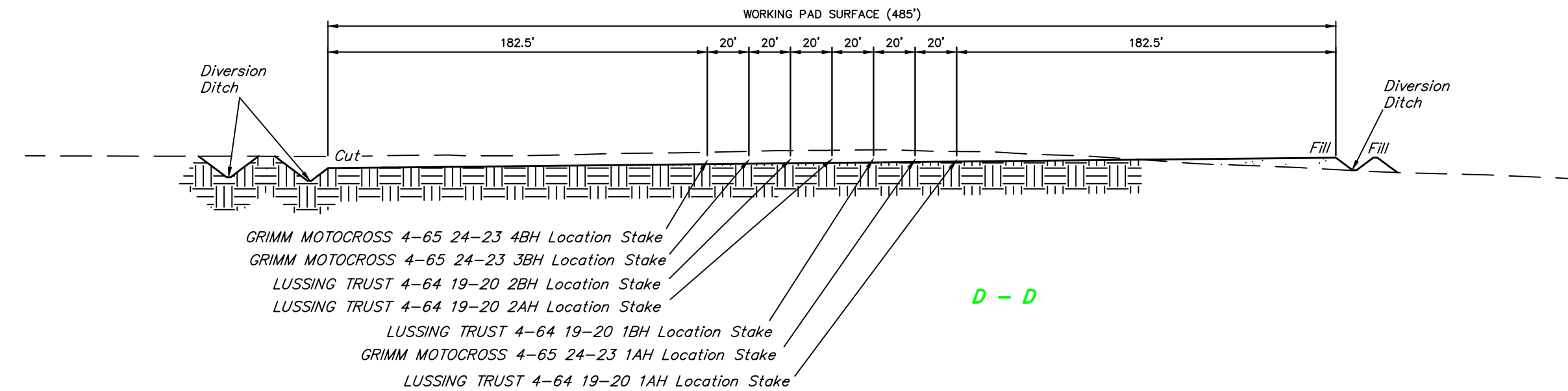
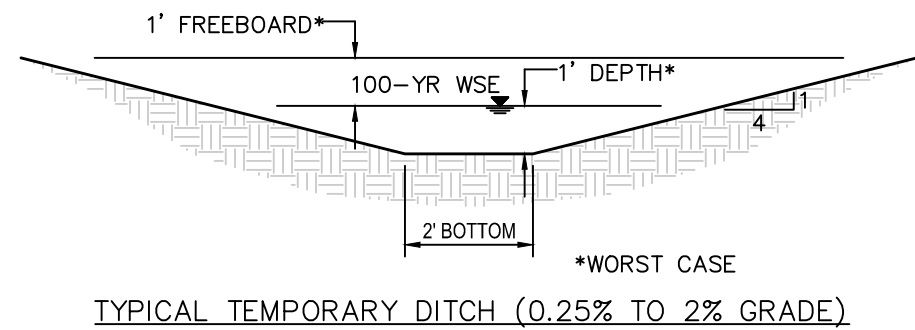
**CRESTONE PEAK
RESOURCES OPERATING, LLC**

LUSSING TRUST 4-64 19-20 NORTH PAD
LOT 1, SECTION 19, T4S, R64W, 6th P.M.
ARAPAHOE COUNTY, COLORADO

SURVEYED BY	NATE WELCH	12-03-21	SCALE
DRAWN BY	C.M.V.E.	01-11-22	1" = 60'

CONSTRUCTION LAYOUT - PLAN VIEW

1" = 40'
X-Section
Scale
1" = 100'



APPROXIMATE EARTHWORK QUANTITIES	
(12") TOPSOIL STRIPPING	11,750 Cu. Yds.
WELL PAD CUT	5,770 Cu. Yds.
SEDIMENT BASIN CUT	470 Cu. Yds.
ACCESS ROAD CUT	70 Cu. Yds.
OFF-SITE DITCH CUT	1,010 Cu. Yds.
TOTAL CUT	19,070 Cu. Yds.
WELL PAD FILL	10,380 Cu. Yds.
SEDIMENT BASIN FILL	630 Cu. Yds.
ACCESS ROAD FILL	800 Cu. Yds.
OFF-SITE DITCH FILL	0 Cu. Yds.
TOTAL FILL	11,810 Cu. Yds.
EXCESS MATERIAL	7,260 Cu. Yds.
TOPSOIL	11,750 Cu. Yds.
GRAVEL BASE ON PAD (6")	4,490 Cu. Yds.
DEFICIT UNBALANCE	0 Cu. Yds.

APPROXIMATE SURFACE DISTURBANCE AREAS		
	DISTANCE	ACRES
WELL SITE CONSTRUCTION DISTURBANCE	NA	±11.63
ACCESS ROAD CONSTRUCTION DISTURBANCE	±624'	±1.10
TOTAL SURFACE USE AREA		±12.73

APPROXIMATE SURFACE DISTURBANCE AREAS	
	ACRES
WORKING PAD SURFACE DISTURBANCE	±5.57
CONSTRUCTION DISTURBANCE	±6.06
TOTAL OIL & GAS LOCATION	±11.63

NOTES:

- Fill quantity includes 10% for compaction.
- Calculations based on 12" of topsoil stripping.
- Cut/Fill slopes 4:1 (Typ.).
- Elevations shown are to Finished Grade.



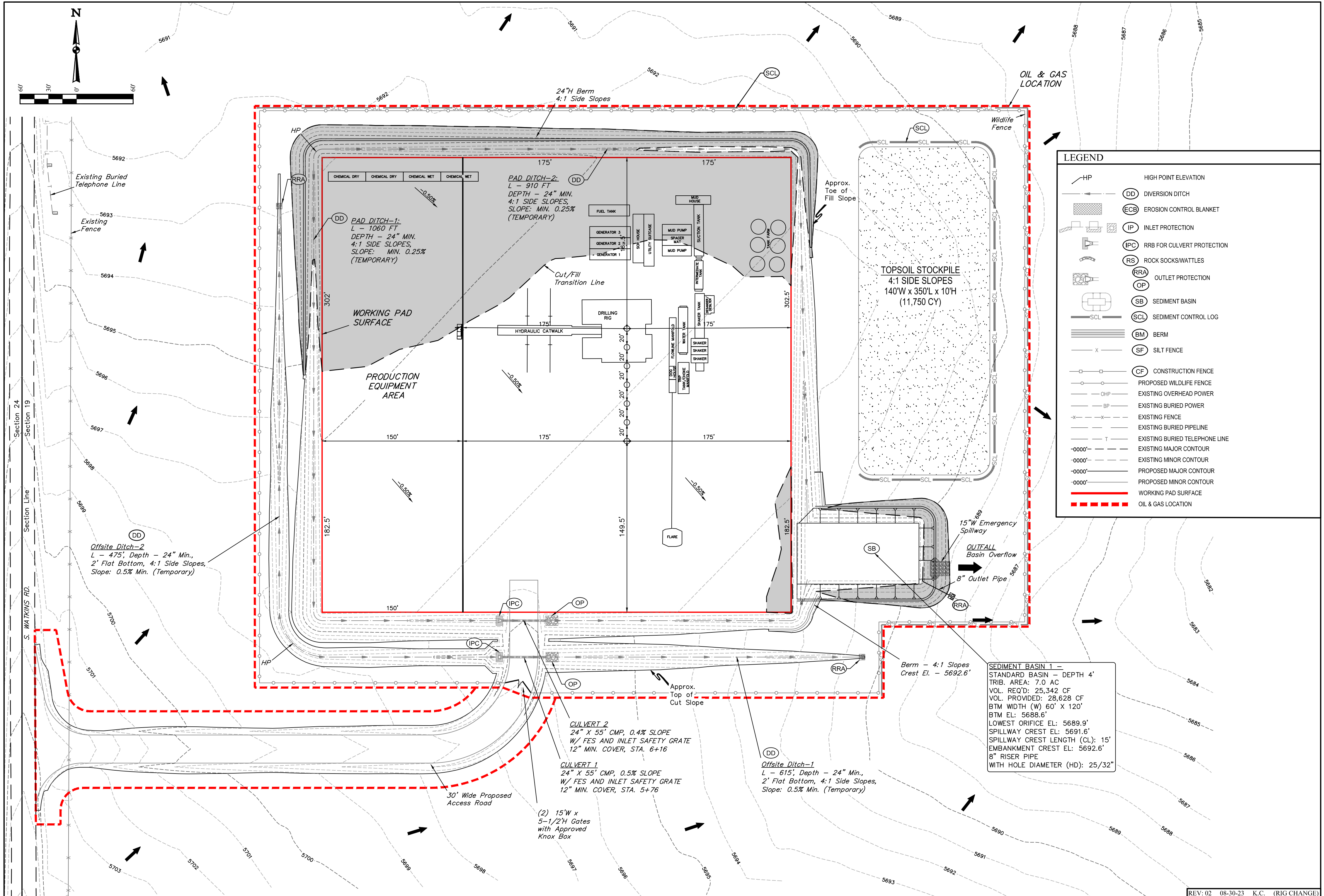
UELS, LLC
Corporate Office * 85 South 200 East
Vernal, UT 84078 * (435) 789-1017

REV: 2 09-06-23 P.M. (TWO DECIMAL DISTURBANCE)

CRESTONE PEAK
RESOURCES OPERATING, LLC

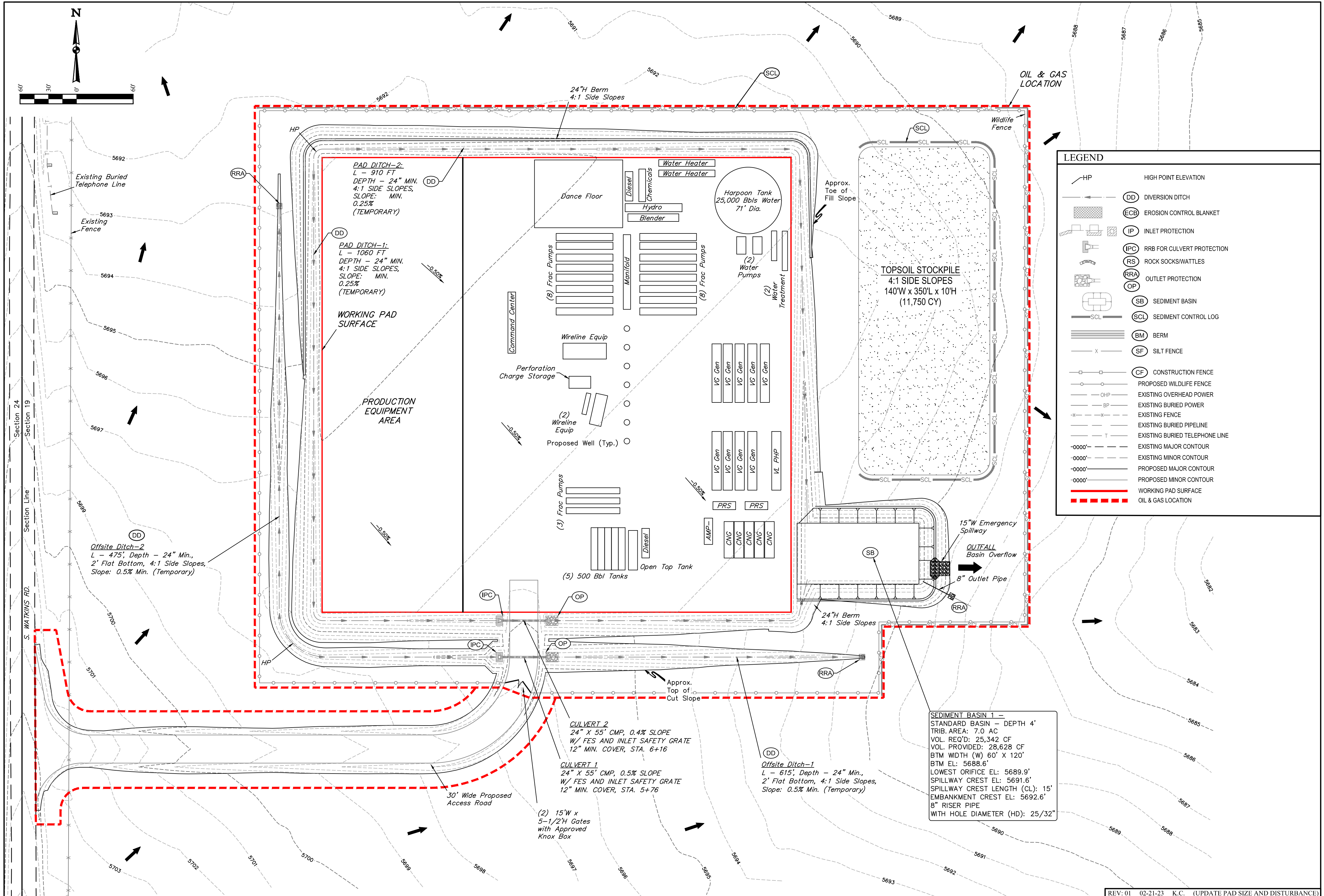
LUSSING TRUST 4-64 19-20 NORTH PAD
LOT 1, SECTION 19, T4S, R64W, 6th P.M.
ARAPAHOE COUNTY, COLORADO

SURVEYED BY	NATE WELCH	12-03-21	SCALE
DRAWN BY	C.IVIE	01-11-22	AS SHOWN
CONSTRUCTION LAYOUT - CROSS SECTIONS			



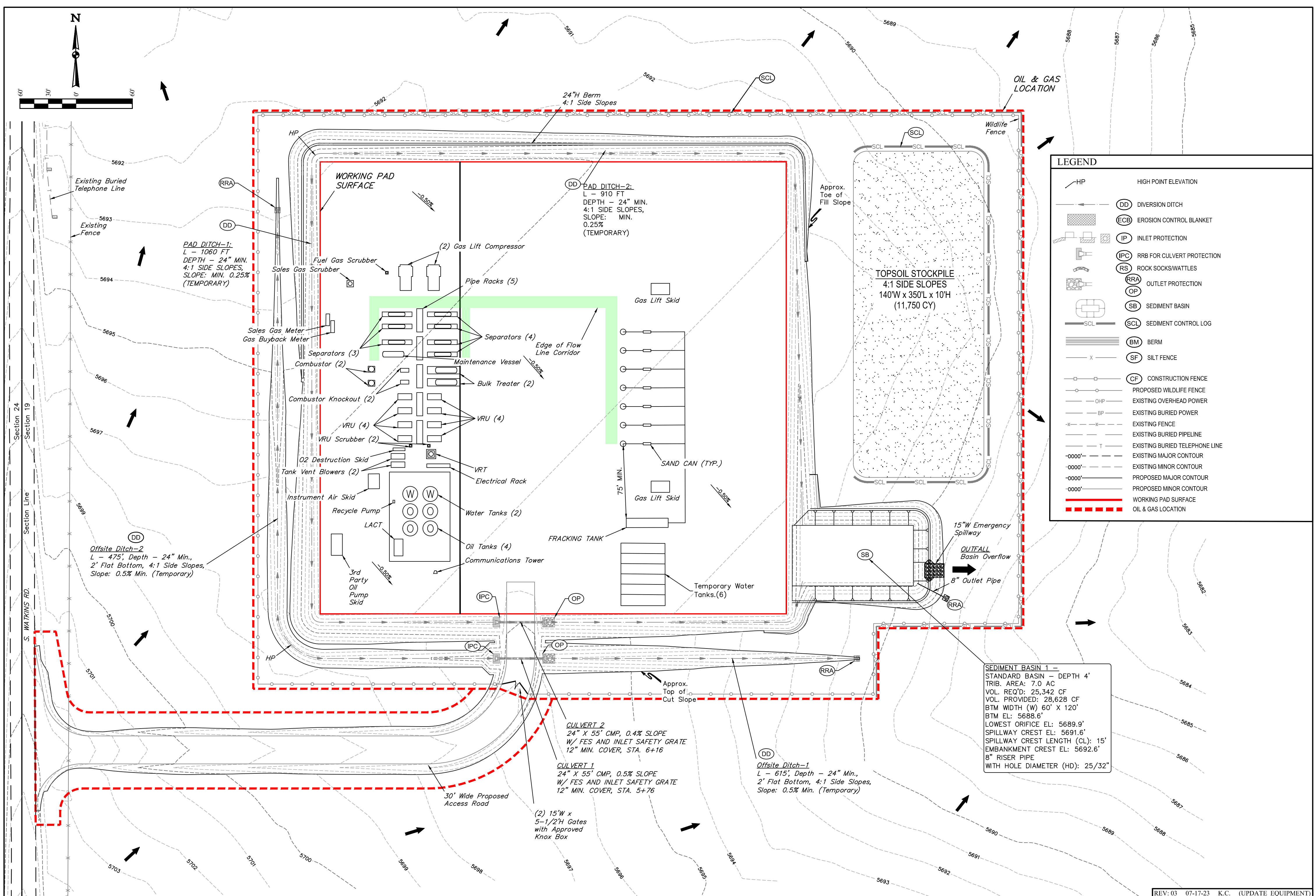
LEGEND

HP	HIGH POINT ELEVATION
DD	DIVERSION DITCH
ECB	EROSION CONTROL BLANKET
IP	INLET PROTECTION
IPC	RRB FOR CULVERT PROTECTION
RS	ROCK SOCKS/WATTLES
RRA	OUTLET PROTECTION
OP	SEDIMENT BASIN
SB	SEDIMENT BASIN
SCL	SEDIMENT CONTROL LOG
BM	BERM
SF	SILT FENCE
CF	CONSTRUCTION FENCE
PROPOSED WILDLIFE FENCE	
EXISTING OVERHEAD POWER	
EXISTING BURIED POWER	
EXISTING FENCE	
EXISTING BURIED PIPELINE	
EXISTING BURIED TELEPHONE LINE	
EXISTING MAJOR CONTOUR	
EXISTING MINOR CONTOUR	
PROPOSED MAJOR CONTOUR	
PROPOSED MINOR CONTOUR	
WORKING PAD SURFACE	
OIL & GAS LOCATION	



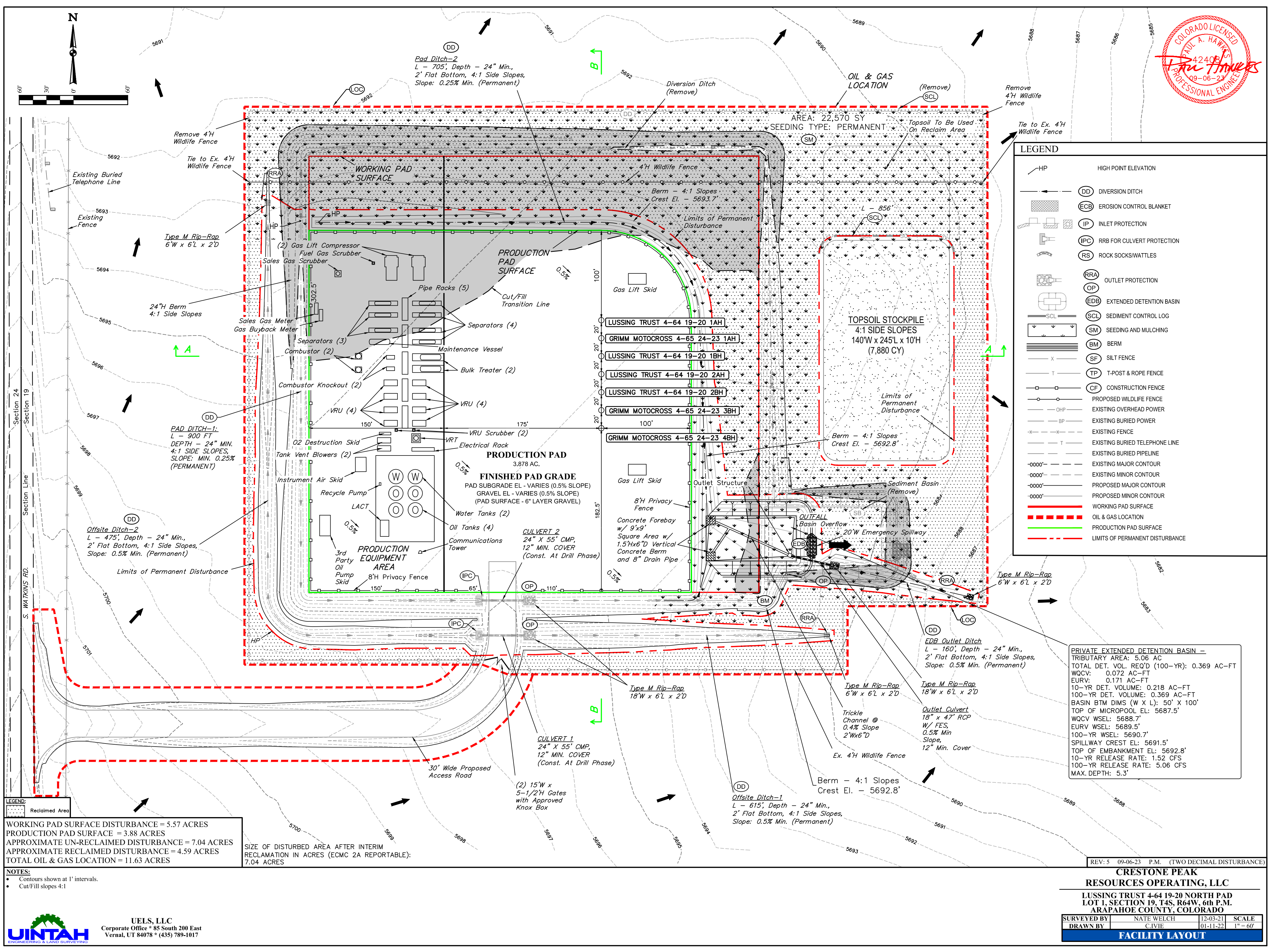
LEGEND

HP	HIGH POINT ELEVATION
DD	DIVERSION DITCH
ECB	EROSION CONTROL BLANKET
IP	INLET PROTECTION
IPC	RRB FOR CULVERT PROTECTION
RS	ROCK SOCKS/WATTLES
RRA	OUTLET PROTECTION
OP	
SB	SEDIMENT BASIN
SCL	SEDIMENT CONTROL LOG
BM	BERM
SF	SILT FENCE
CF	CONSTRUCTION FENCE
PROPOSED WILDLIFE FENCE	
EXISTING OVERHEAD POWER	
EXISTING BURIED POWER	
EXISTING FENCE	
EXISTING BURIED PIPELINE	
EXISTING BURIED TELEPHONE LINE	
EXISTING MAJOR CONTOUR	
EXISTING MINOR CONTOUR	
PROPOSED MAJOR CONTOUR	
PROPOSED MINOR CONTOUR	
WORKING PAD SURFACE	
OIL & GAS LOCATION	



LEGEND

HP	HIGH POINT ELEVATION
DD	DIVERSION DITCH
ECB	EROSION CONTROL BLANKET
IP	INLET PROTECTION
IPC	RRB FOR CULVERT PROTECTION
RS	ROCK SOCKS/WATTLES
RRA	OUTLET PROTECTION
OP	
SB	SEDIMENT BASIN
SCL	SEDIMENT CONTROL LOG
BM	BERM
SF	SILT FENCE
CF	CONSTRUCTION FENCE
PROPOSED WILDLIFE FENCE	
EXISTING OVERHEAD POWER	
EXISTING BURIED POWER	
EXISTING FENCE	
EXISTING BURIED PIPELINE	
EXISTING BURIED TELEPHONE LINE	
EXISTING MAJOR CONTOUR	
EXISTING MINOR CONTOUR	
PROPOSED MAJOR CONTOUR	
PROPOSED MINOR CONTOUR	
WORKING PAD SURFACE	
OIL & GAS LOCATION	



LEGEND:

- Reclaimed Area

WORKING PAD SURFACE DISTURBANCE = 5.57 ACRES
PRODUCTION PAD SURFACE = 3.88 ACRES
APPROXIMATE UN-RECLAIMED DISTURBANCE = 7.04 ACRES
APPROXIMATE RECLAIMED DISTURBANCE = 4.59 ACRES
TOTAL OIL & GAS LOCATION = 11.63 ACRES

NOTES:

- Contours shown at 1' intervals.
- Cut/Fill slopes 4:1

PRIVATE EXTENDED DETENTION BASIN -
TRIBUTARY AREA: 5.06 AC
TOTAL DET. VOL. REQ'D (100-YR): 0.369 AC-FT
WQCV: 0.072 AC-FT
EURV: 0.171 AC-FT
10-YR DET. VOLUME: 0.218 AC-FT
100-YR DET. VOLUME: 0.369 AC-FT
BASIN BTM DIMS (W X L): 50' X 100'
TOP OF MICROPOOL EL: 5687.5'
WQCV WSEL: 5688.7'
EURV WSEL: 5689.5'
100-YR WSEL: 5690.7'
SPILLWAY CREST EL: 5691.5'
TOP OF EMBANKMENT EL: 5692.8'
10-YR RELEASE RATE: 1.52 CFS
100-YR RELEASE RATE: 5.06 CFS
MAX. DEPTH: 5.3'

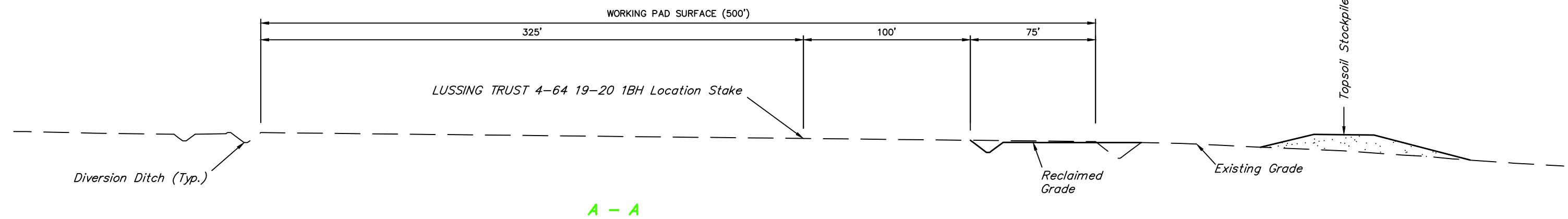
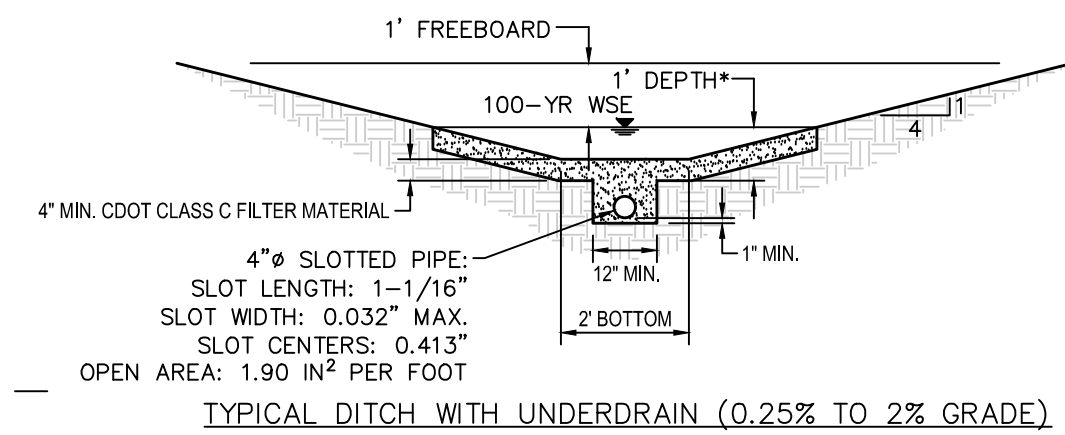
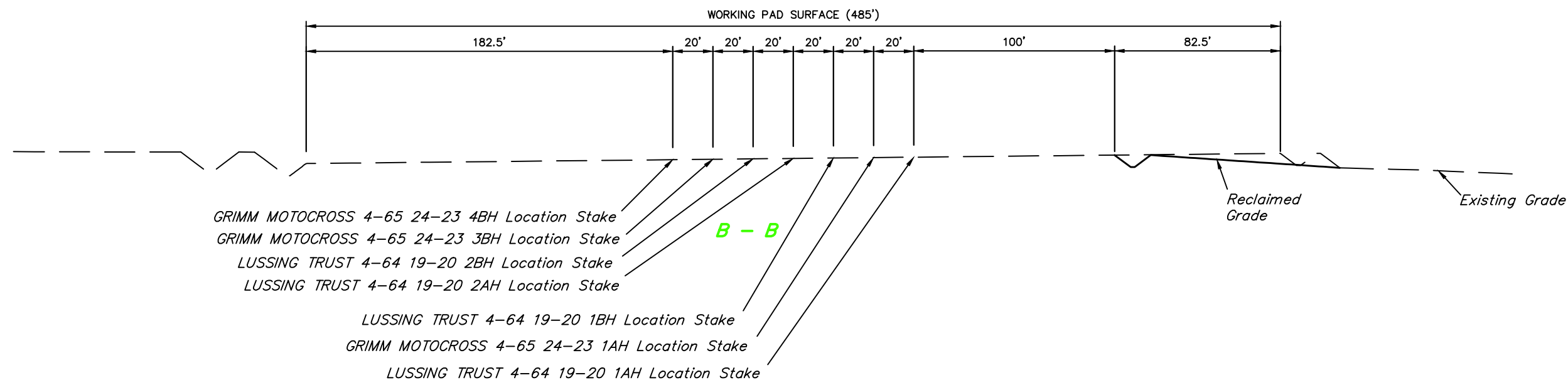
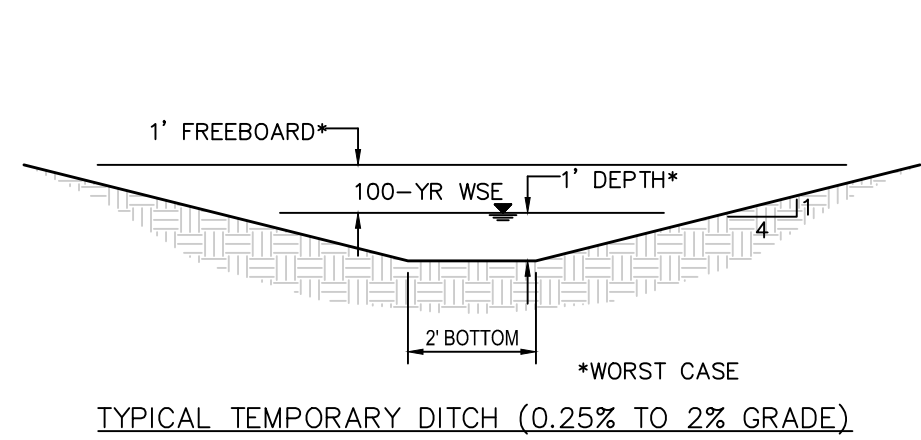
REV: 5 09-06-23 P.M. (TWO DECIMAL DISTURBANCE)

**CRESTONE PEAK
RESOURCES OPERATING, LLC**
LUSSING TRUST 4-64 19-20 NORTH PAD
LOT 1, SECTION 19, T4S, R64W, 6th P.M.
ARAPAHOE COUNTY, COLORADO

SURVEYED BY	NATE WELCH	12-03-21	SCALE
DRAWN BY	C.VIE	01-11-22	1" = 60'

FACILITY LAYOUT

1" = 40'
X-Section
Scale
1" = 100'



WORKING PAD SURFACE DISTURBANCE = 5.57 ACRES
PRODUCTION PAD SURFACE = 3.88 ACRES
APPROXIMATE UN-RECLAIMED DISTURBANCE = 7.04 ACRES
APPROXIMATE RECLAIMED DISTURBANCE = 4.59 ACRES
TOTAL OIL & GAS LOCATION = 11.63 ACRES

APPROXIMATE EARTHWORK QUANTITIES	
(12") TOPSOIL STRIPPING	0 Cu. Yds.
PAD RECLAMATION	3,770 Cu. Yds.
TOTAL CUT	3,770 Cu. Yds.
PAD RECLAIM - FILL	3,770 Cu. Yds.
EXCESS MATERIAL	0 Cu. Yds.
TOPSOIL ON RECLAIMED PAD (12")	3,870 Cu. Yds.

NOTES:

- Fill quantity includes 10% for compaction.
- Calculations based on 12" of topsoil stripping.
- Cut/Fill slopes 4:1 (Typ.).



UELS, LLC
Corporate Office * 85 South 200 East
Vernal, UT 84078 * (435) 789-1017

REV: 1 09-06-23 P.M. (TWO DECIMAL DISTURBANCE)

CRESTONE PEAK
RESOURCES OPERATING, LLC

LUSSING TRUST 4-64 19-20 NORTH PAD
LOT 1, SECTION 19, T4S, R64W, 6th P.M.
ARAPAHOE COUNTY, COLORADO

SURVEYED BY	NATE WELCH	12-03-21	SCALE
DRAWN BY	K.C.	02-21-23	AS SHOWN

INTERIM RECLAMATION - CROSS SECTIONS