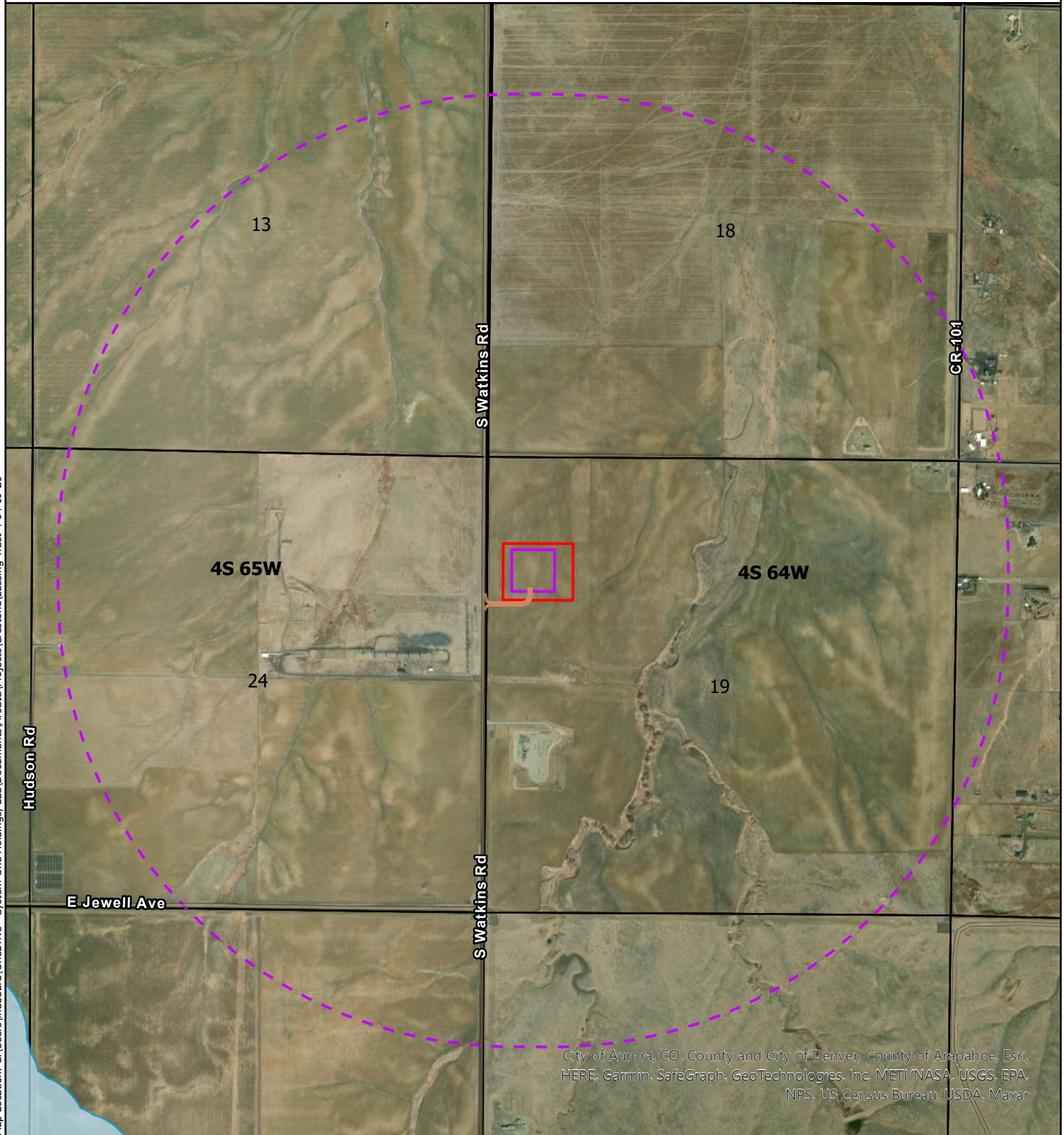


CRESTONE PEAK RESOURCES OPERATING, LLC
 LUSSING TRUST 4-64 19-20 NORTH
 SEC 19, T4S R64W, 6th P.M.
 ARAPAHOE COUNTY, COLORADO



Map Location: C:\Users\hubbard\OneDrive - System One Holdings, LLC\Documents\ArcGIS\Projects\Crestone\Lussing Trust 4-64 19-20



City of Aurora, CO, County and City of Denver, County of Arapahoe, Esri, HERE, Garmin, SafeGraph, GeoTechnologies, Inc. METI/NASA, USGS, EPA, NPS, US Census Bureau, USDA, Maxar

WILDILFE HABITAT DRAWING

- Access Road
- Oil & Gas Location
- Working Pad Surface (WPS)
- One-Mile Radius around WPS
- Aquatic Native Species Conservation Waters HPH

All pipeline and utility corridors associated with the O&G Location will be permitted and operated by third parties.

Projection: WGS 1984
 Date: 08/07/2023
 Drafted by: LMH



0 1,000 2,000
 Feet

1 inch equals 2,000 feet