

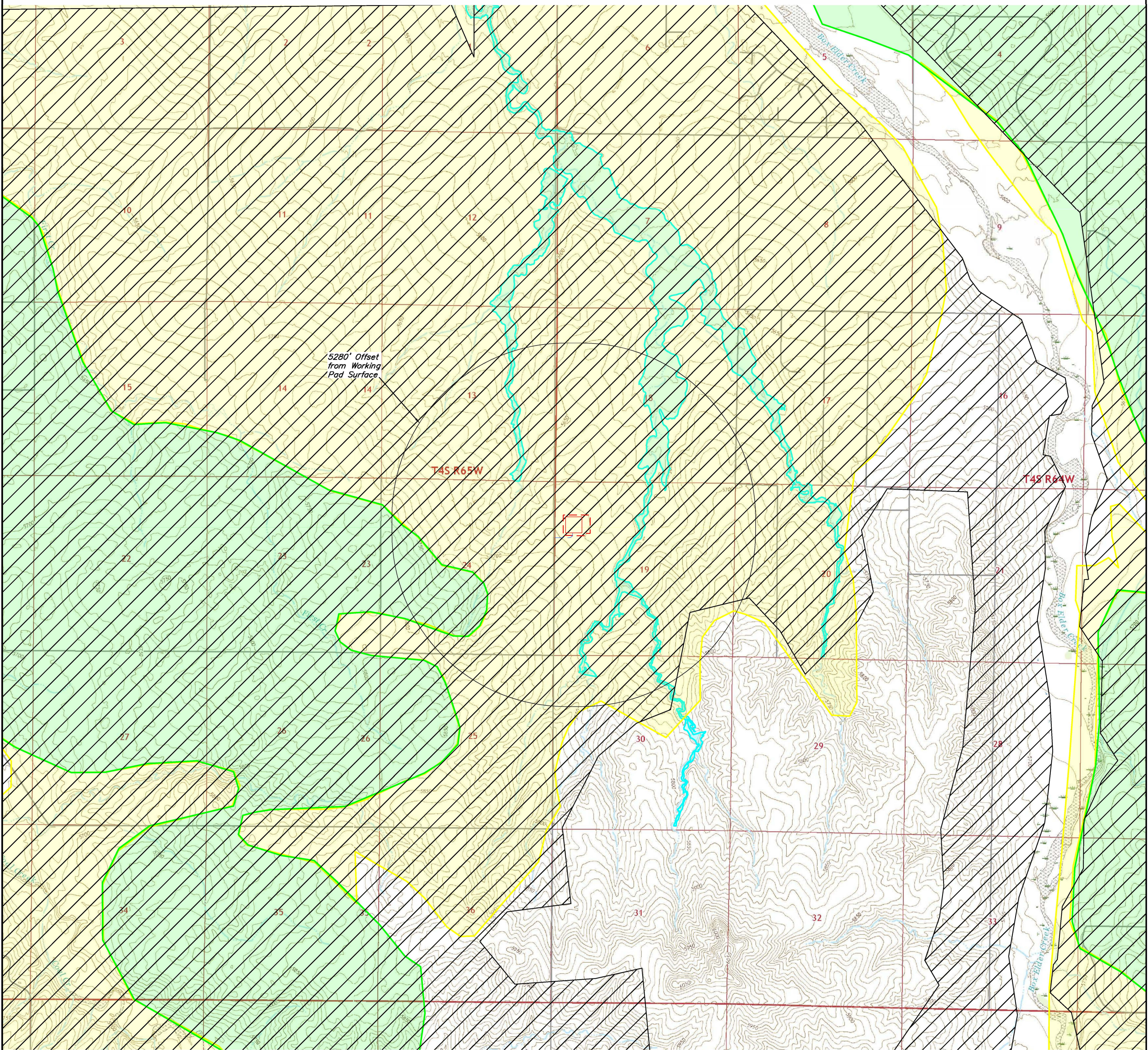
LEGEND

-  = OIL & GAS LOCATION
-  = WORKING PAD SURFACE
-  = PROPOSED ACCESS ROAD
-  = EG-14 EOLIAN (WIND BLOWN) DEPOSITS
-  = EG-14 CRETACEOUS & TERTIARY FORMATIONS
-  = EG-14 DUNE AND SHEET SAND DEPOSITS
-  = FLOODPLAIN

I CERTIFY THAT I AM A PROFESSIONAL GEOLOGIST, HAVING MET THE EDUCATIONAL REQUIREMENTS AND PROFESSIONAL WORK EXPERIENCE REQUIRED BY C.R.S. 23-41 -208(b). I HAVE REVIEWED INFORMATION PERTAINING TO THIS OIL AND GAS LOCATION AND THE SURROUNDING AREA AND CONFIRM THAT THE IDENTIFIED EG-14 EOLIAN (WIND BLOWN) DEPOSITS, EG-14 CRETACEOUS & TERTIARY FORMATIONS, EG-14 DUNE AND SHEET SAND DEPOSITS DO NOT POSE A RISK AND WILL NOT ADVERSELY IMPACT THE PROPOSED DEVELOPMENT.

Date: 2/28/23

Daniel Harrington
Asset Development Lead
Civitas Resources



NOTES:

- There are no known/permitted mines, coal areas, landslides or earthquake records within 5280' of the working pad surface. https://cogccmap.state.co.us/cogcc_gis_online/ (02-21-23)
- Fault (COGCC) - None - https://cogccmap.state.co.us/cogcc_gis_online/ (02-21-23)
- Landslide (COGCC) - None - https://cogccmap.state.co.us/cogcc_gis_online/ (02-21-23)
- Underground Mine (COGCC) - None - https://cogccmap.state.co.us/cogcc_gis_online/ (02-21-23)
- Collapsible Soils (CGS) - <https://cologeosurvey.maps.arcgis.com/apps/webappviewer/index.html?id=a6f816b35fb64d3da096e84af661f070> (02-21-23)
- Radioactive Minerals (COGCC) - None - https://cogccmap.state.co.us/cogcc_gis_online/ (02-21-23)
- Floodplain information was taken from COGCC GIS data. (Floodplain-Colorado 100-year Effective as of April 2018) (02-21-23)

SHEET 2 OF 2

REV: 1 02-21-23 K.C. (UPDATE PAD SIZE & DISTRUBANCE

**CRESTONE PEAK
RESOURCES OPERATING, LLC**

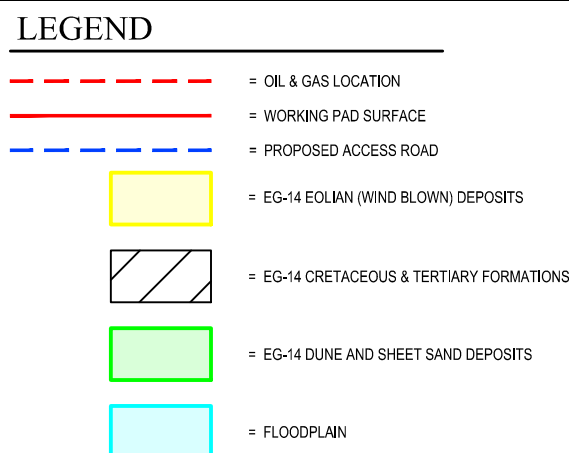
**LUSSING TRUST 4-64 19-20 NORTH PAD
LOT 1, SECTION 19, T4S, R64W, 6th P.M.
ARAPAHOE COUNTY, COLORADO**

SURVEYED BY	NATE WELCH	12-03-21	SCALE
DRAWN BY	C.IVIE	01-11-21	1" = 2000'

GEOLOGIC HAZARDS MAP



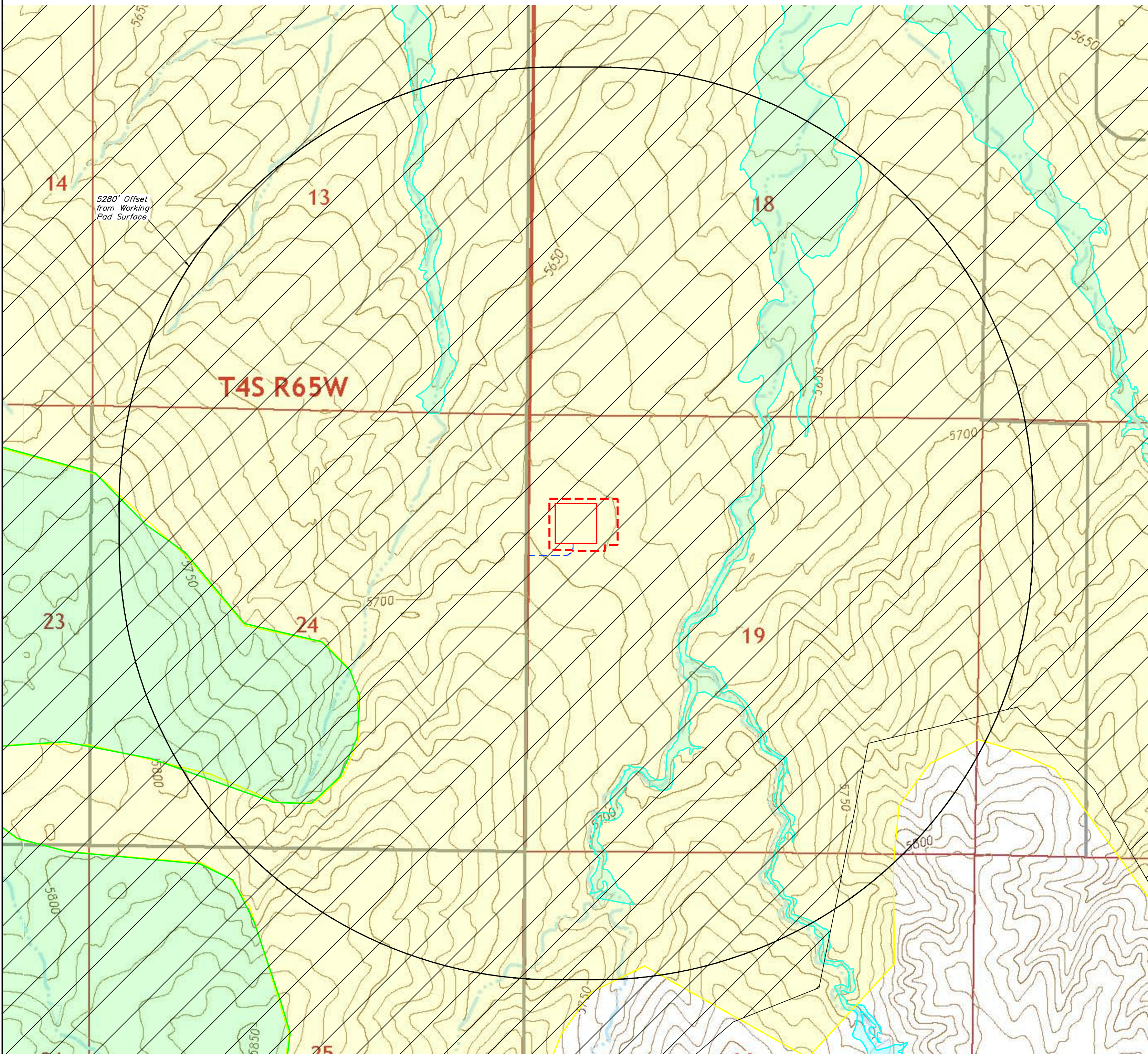
UELS, LLC
Corporate Office * 85 South 200 East
Vernal, UT 84078 * (435) 789-1017



I CERTIFY THAT I AM A PROFESSIONAL GEOLOGIST, HAVING MET THE EDUCATIONAL REQUIREMENTS AND PROFESSIONAL WORK EXPERIENCE REQUIRED BY C.R.S. 23-41-208(b). I HAVE REVIEWED INFORMATION PERTAINING TO THIS OIL AND GAS LOCATION AND THE SURROUNDING AREA AND CONFIRM THAT THE IDENTIFIED EG-14 EOLIAN (WIND BLOWN) DEPOSITS, EG-14 CRETACEOUS & TERTIARY FORMATIONS, EG-14 DUNE AND SHEET SAND DEPOSITS DO NOT POSE A RISK AND WILL NOT ADVERSELY IMPACT THE PROPOSED DEVELOPMENT.

Date: 2/28/23

Daniel Harrington
Asset Development Lead
Civitas Resources



NOTES:

- There are no known/permitted mines, coal areas, landslides or earthquake records within 5280' of the working pad surface. https://cogccmap.state.co.us/cogcc_gis_online/ (02-21-23)
- Fault (COGCC) - None - https://cogccmap.state.co.us/cogcc_gis_online/ (02-21-23)
- Landslide (COGCC) - None - https://cogccmap.state.co.us/cogcc_gis_online/ (02-21-23)
- Underground Mine (COGCC) - None - https://cogccmap.state.co.us/cogcc_gis_online/ (02-21-23)
- Collapsible Soils (CGS) - <https://cologeosurvey.maps.arcgis.com/apps/webappviewer/index.html?id=a6f816b35fb64d3da096e84af661f070> (02-21-23)
- Radioactive Minerals (COGCC) - None - https://cogccmap.state.co.us/cogcc_gis_online/ (02-21-23)
- Floodplain information was taken from COGCC GIS data. (Floodplain-Colorado 100-year Effective as of April 2018) (02-21-23)

SHEET 1 OF 2

REV: 1 02-21-23 K.C. (UPDATE PAD SIZE & DISTRUBANCE)

**CRESTONE PEAK
RESOURCES OPERATING, LLC**

**LUSSING TRUST 4-64 19-20 NORTH PAD
LOT 1, SECTION 19, T4S, R64W, 6th P.M.
ARAPAHOE COUNTY, COLORADO**

SURVEYED BY	NATE WELCH	12-03-21	SCALE
DRAWN BY	C.IVIE	01-11-21	1" = 800'

GEOLOGIC HAZARDS MAP