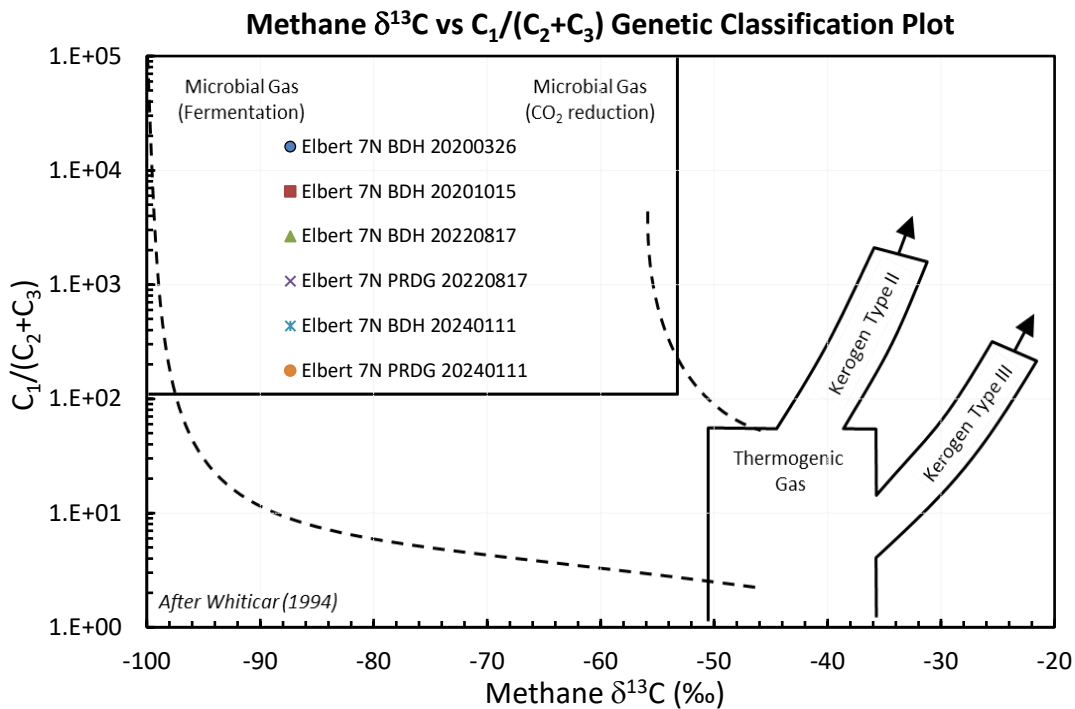
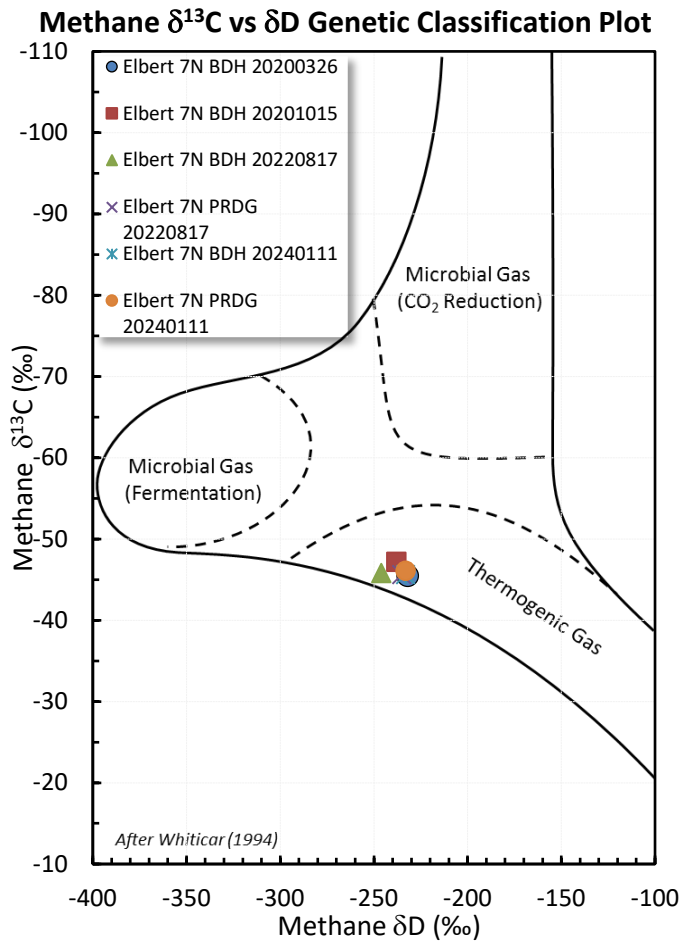
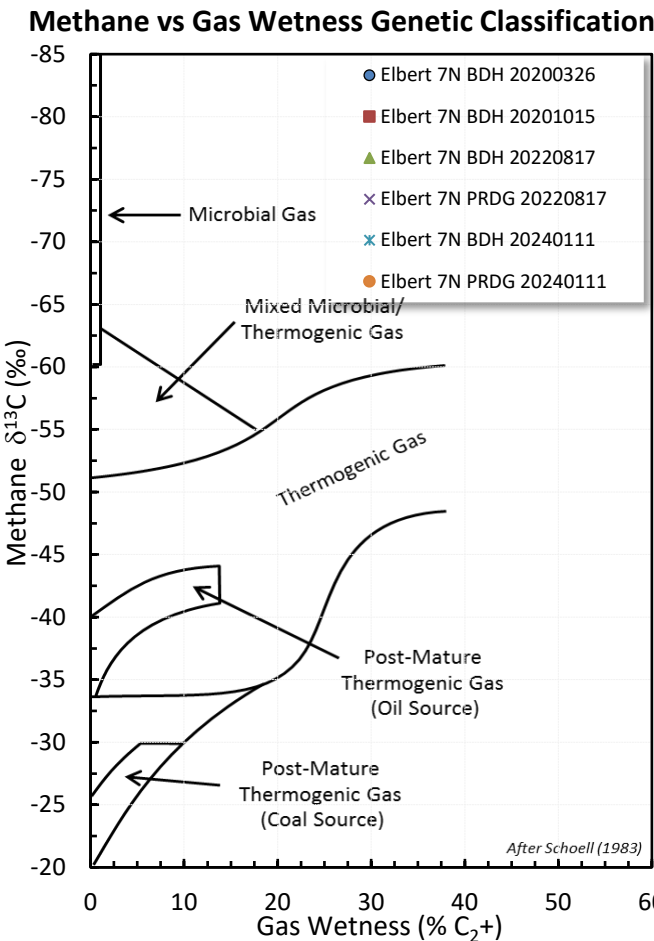
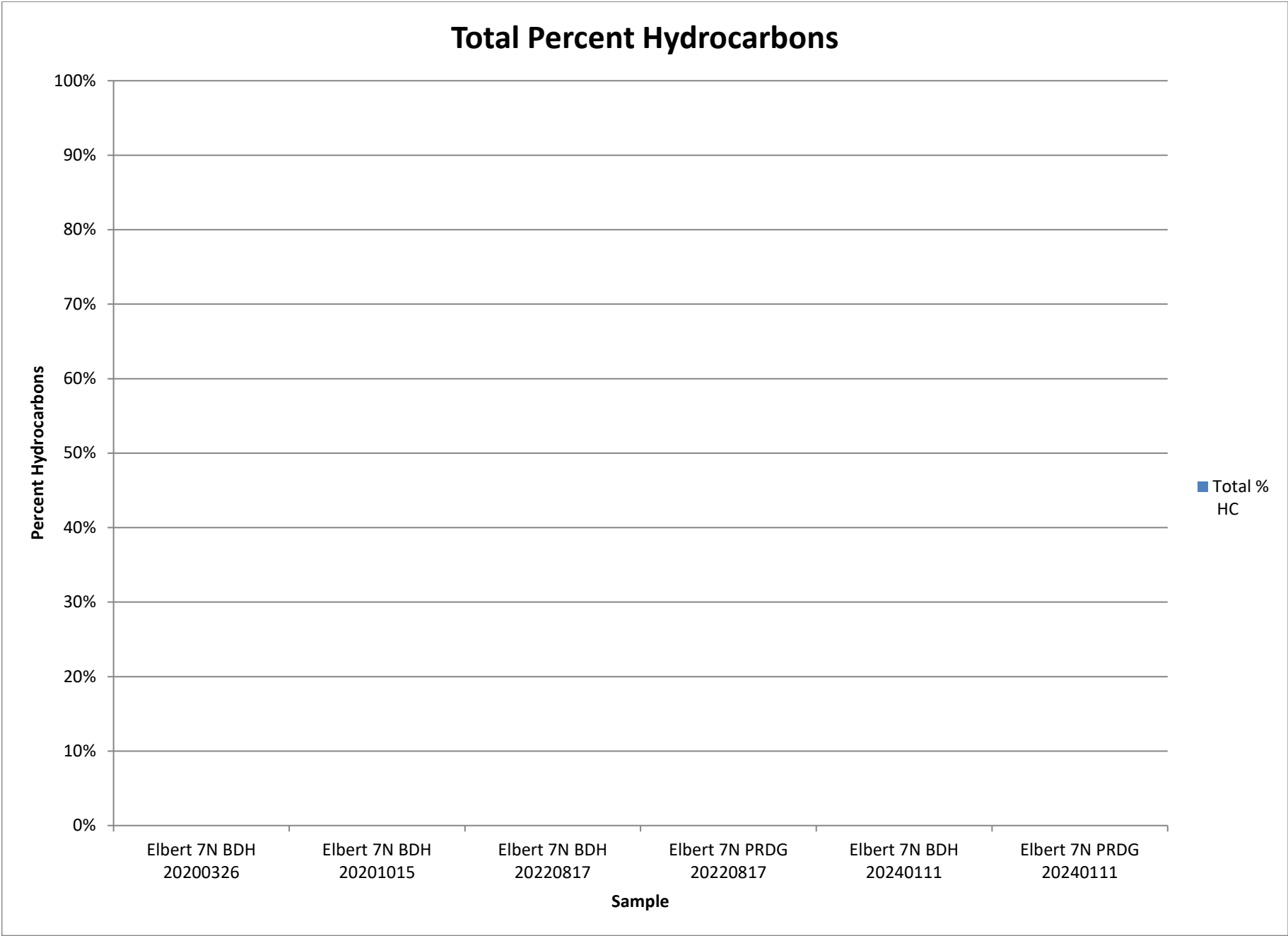


Stable Isotope Interpretive Plots



Total Percent Hydrocarbons



GAS COMPOSITION

GAS COMPOSITION (MOL %)

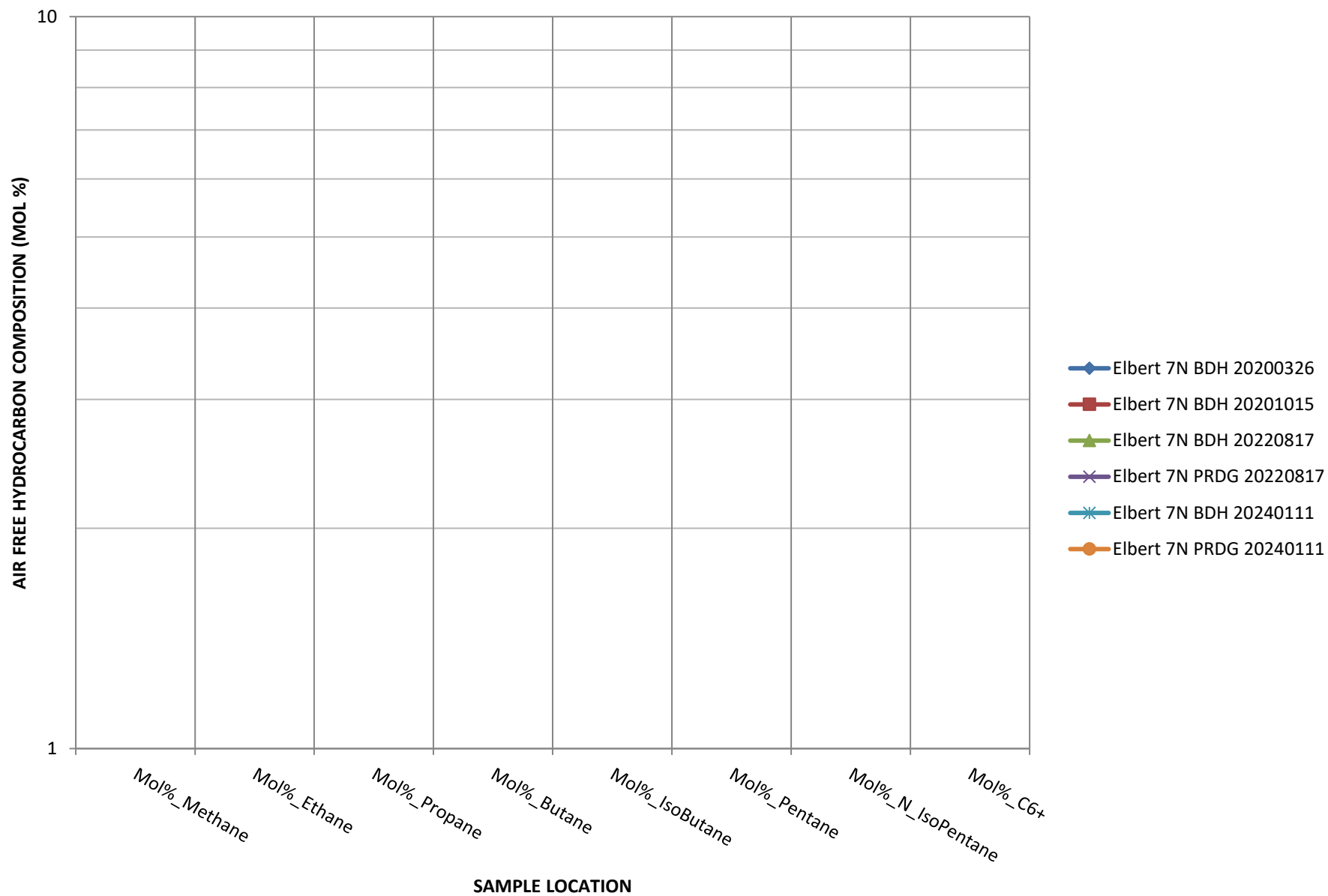
Parameter

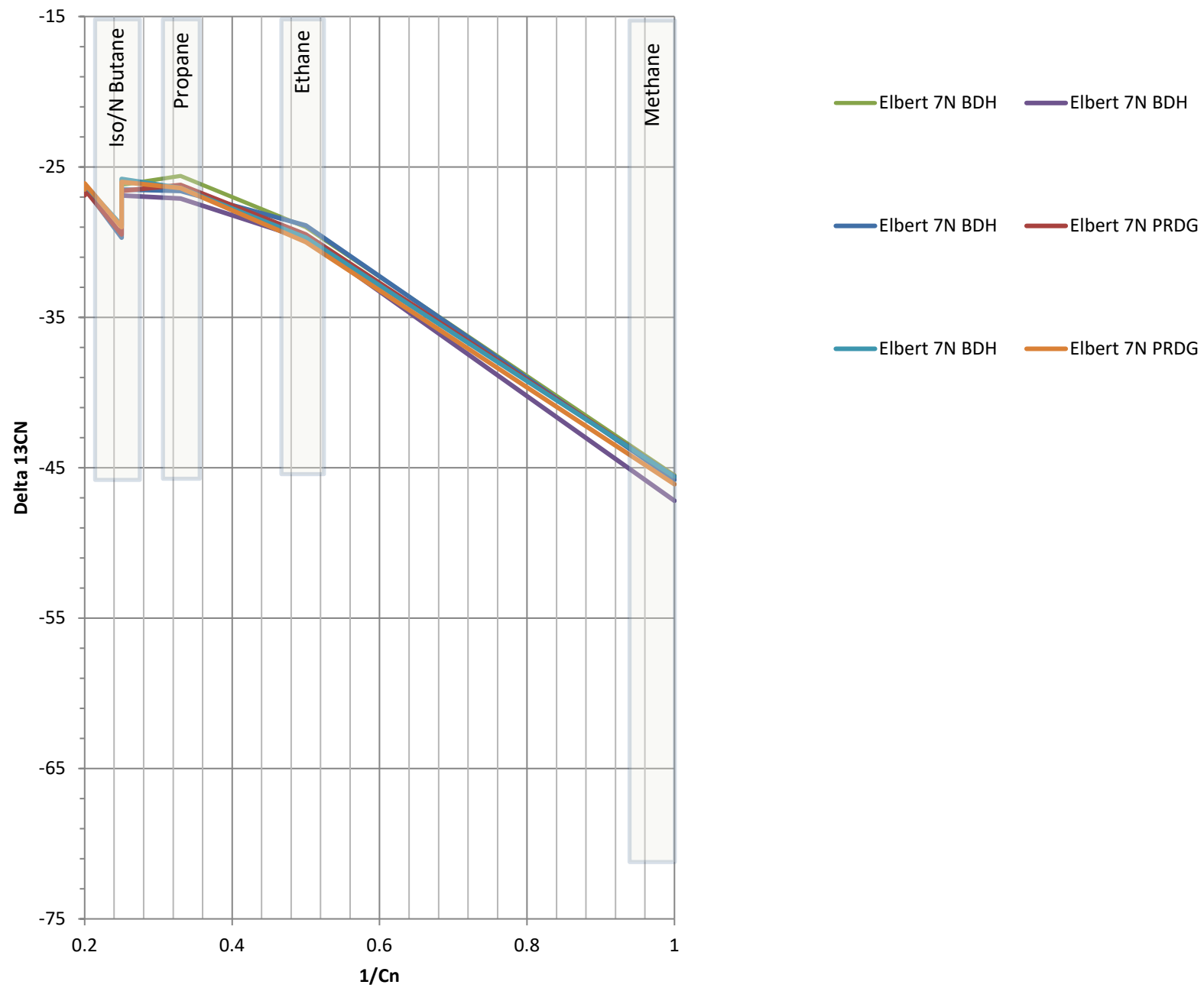
Elbert 7N BDH 20200326
Elbert 7N BDH 20201015
Elbert 7N BDH 20220817
Elbert 7N PRDG 20220817
Elbert 7N BDH 20240111
Elbert 7N PRDG 20240111

| Parameter | Elbert 7N BDH 20200326 | Elbert 7N BDH 20201015 | Elbert 7N BDH 20220817 | Elbert 7N PRDG 20220817 | Elbert 7N BDH 20240111 | Elbert 7N PRDG 20240111 |
|--------------------|------------------------|------------------------|------------------------|-------------------------|------------------------|-------------------------|
| Mol%_Nitrogen | 2.0 | 35.0 | 30.0 | 1.8 | 1.0 | 0.5 |
| Mol%_Oxygen | | | | | | |
| Mol%_Argon | 0.6 | 3.0 | 0.7 | 0.2 | 0.25 | 0.1 |
| Mol%_O2+AR | 2.2 | | | 2.5 | 2.5 | 2.5 |
| Mol%_CarbonDioxide | | | | | | |
| Mol%_Helium | | 14.0 | 16.0 | | | |
| Mol%_hydrogen | 75.0 | 35.0 | 38.0 | 65.0 | 65.0 | 65.0 |
| Mol%_Methane | 11.0 | 5.5 | 5.5 | 11.0 | 11.0 | 12.0 |
| Mol%_Ethane | 3.2 | 2.2 | 2.2 | 5.0 | 5.2 | 5.2 |
| Mol%_Propane | 0.5 | 0.6 | 0.55 | 2.2 | 2.0 | 2.0 |
| Mol%_Butane | 0.3 | 0.25 | 0.3 | 0.9 | 0.9 | 0.9 |
| Mol%_IsoButane | 0.09 | 0.15 | 0.15 | 1.0 | 0.6 | 0.6 |
| Mol%_N_Pentane | 0.08 | 0.15 | 0.18 | 0.9 | 0.5 | 0.55 |
| Mol%_C6+ | 0.5 | 0.22 | 0.12 | 0.7 | 0.35 | 0.4 |

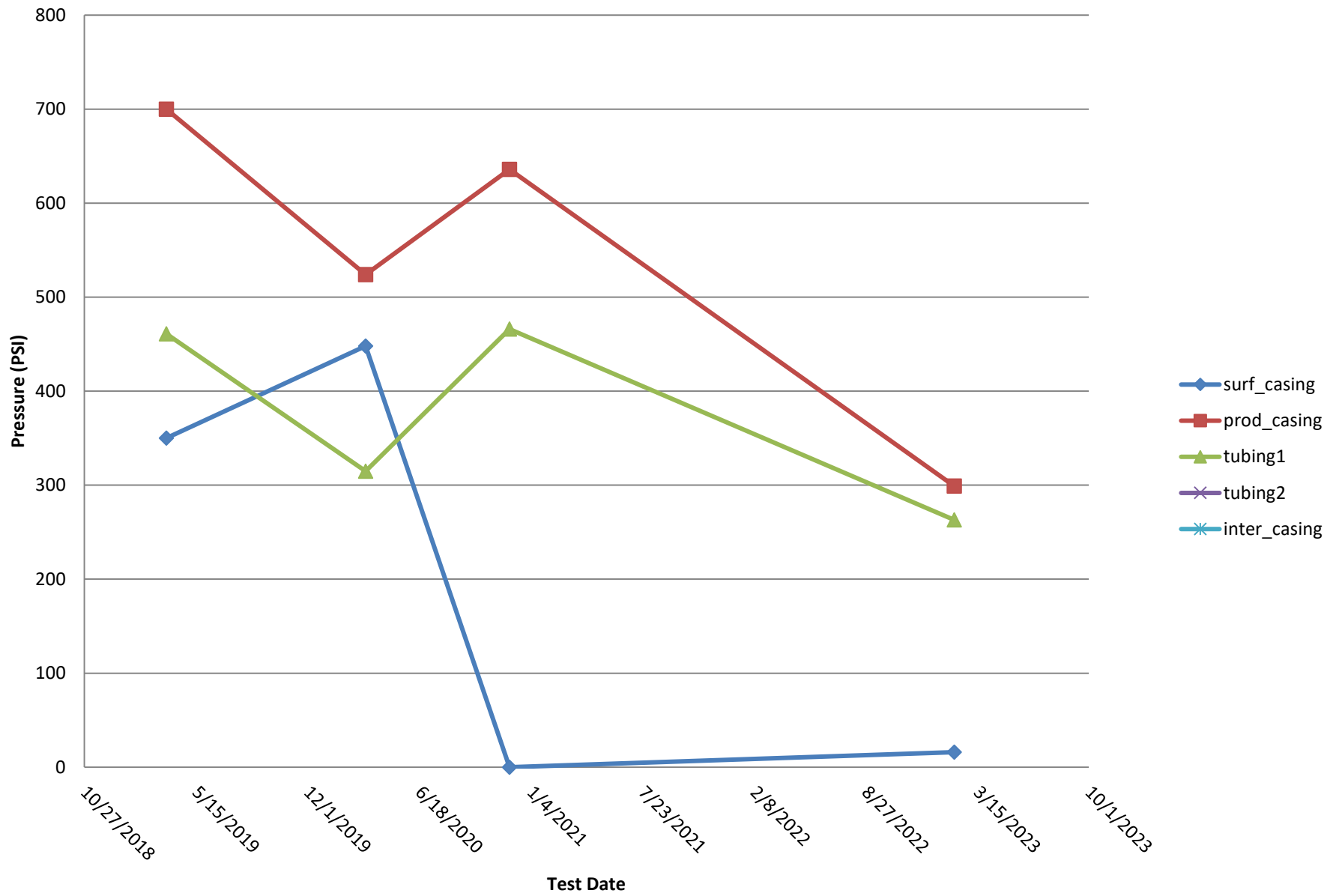
- Elbert 7N BDH 20200326
- Elbert 7N BDH 20201015
- Elbert 7N BDH 20220817
- Elbert 7N PRDG 20220817
- Elbert 7N BDH 20240111
- Elbert 7N PRDG 20240111

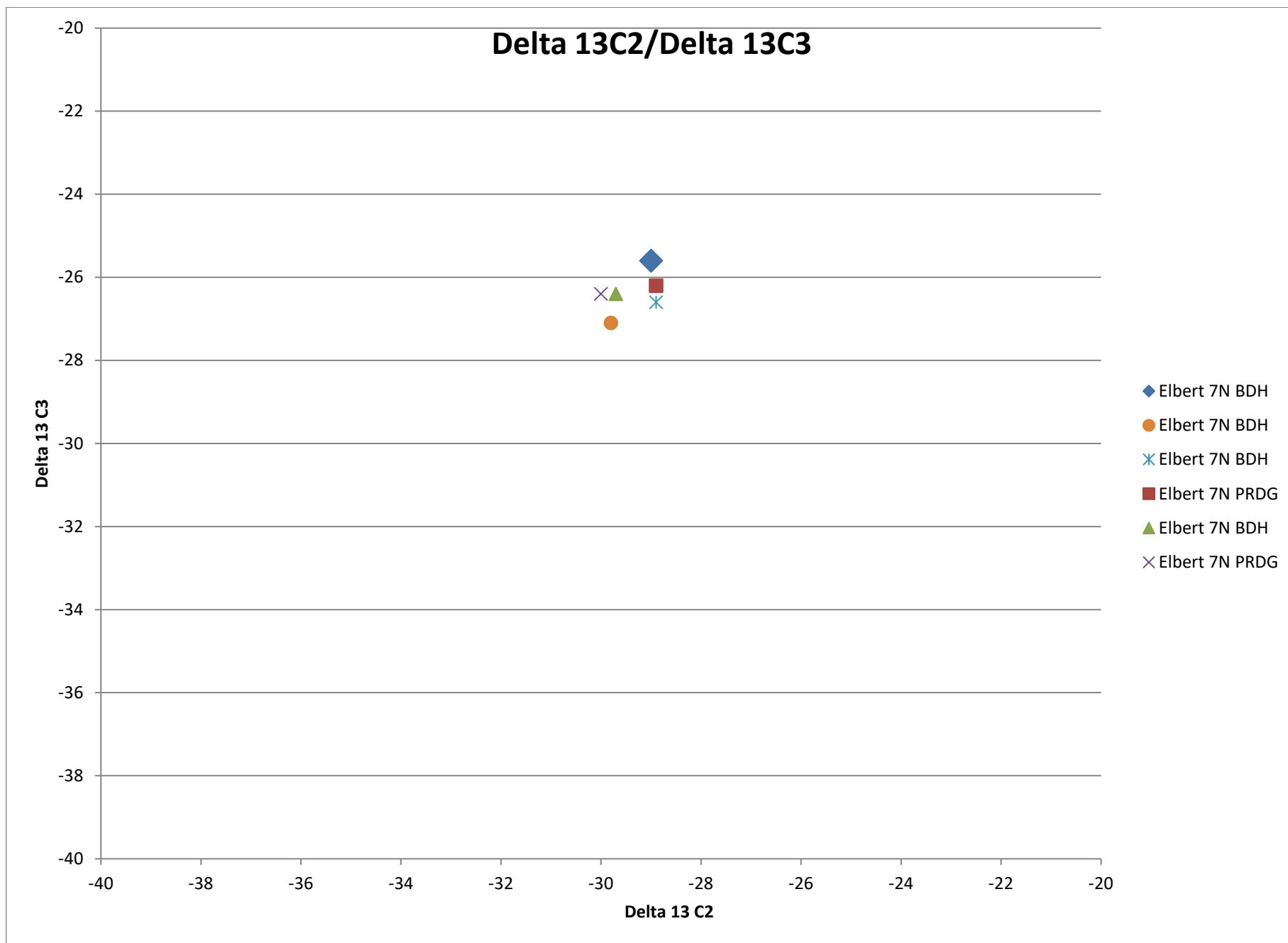
HYDROCARBON COMPOSITION



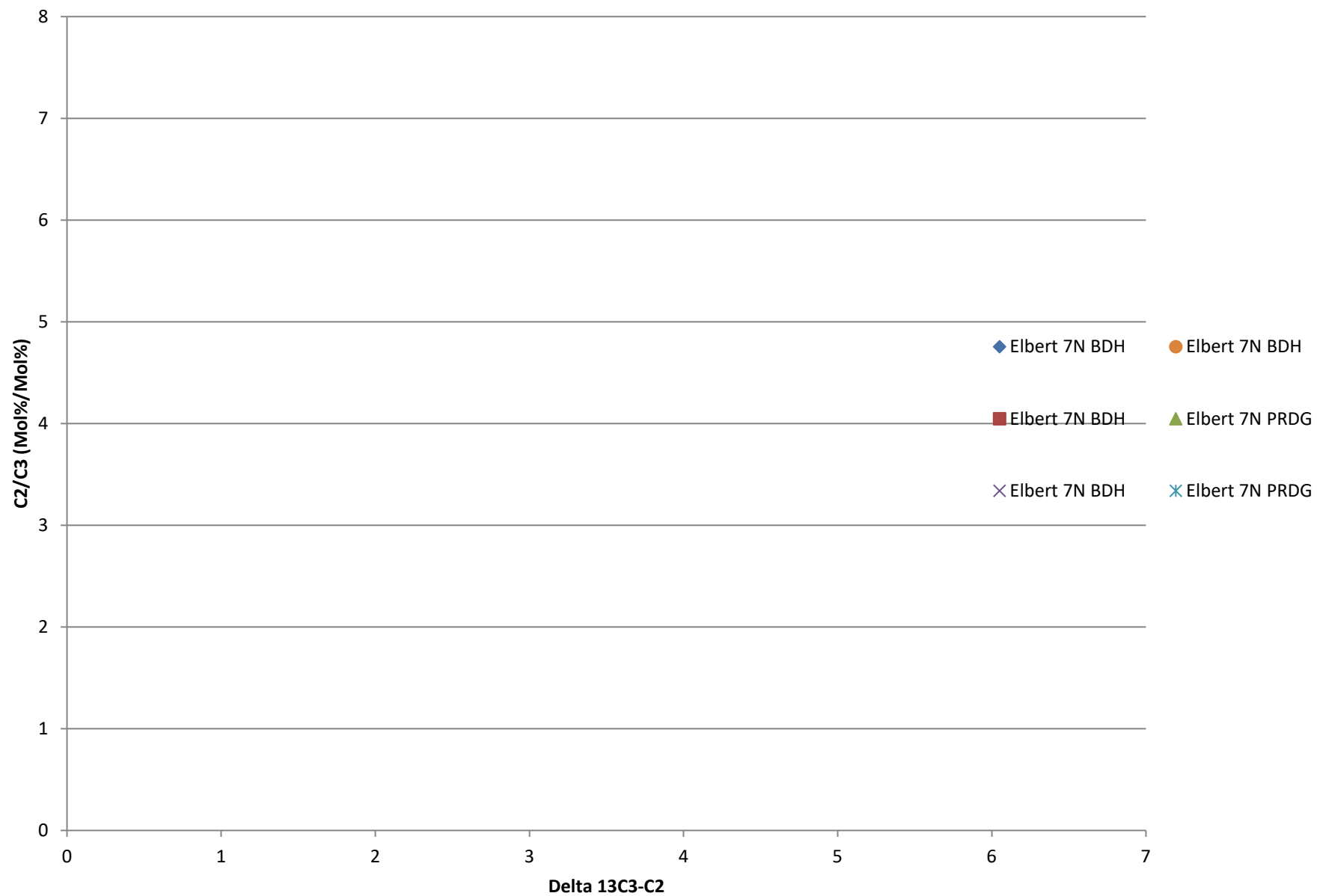


Bradenhead Test Summary





Delta13 C2/C3 vs. Delta 13C3-C2



Delta 13 IC4/ Delta NC4

