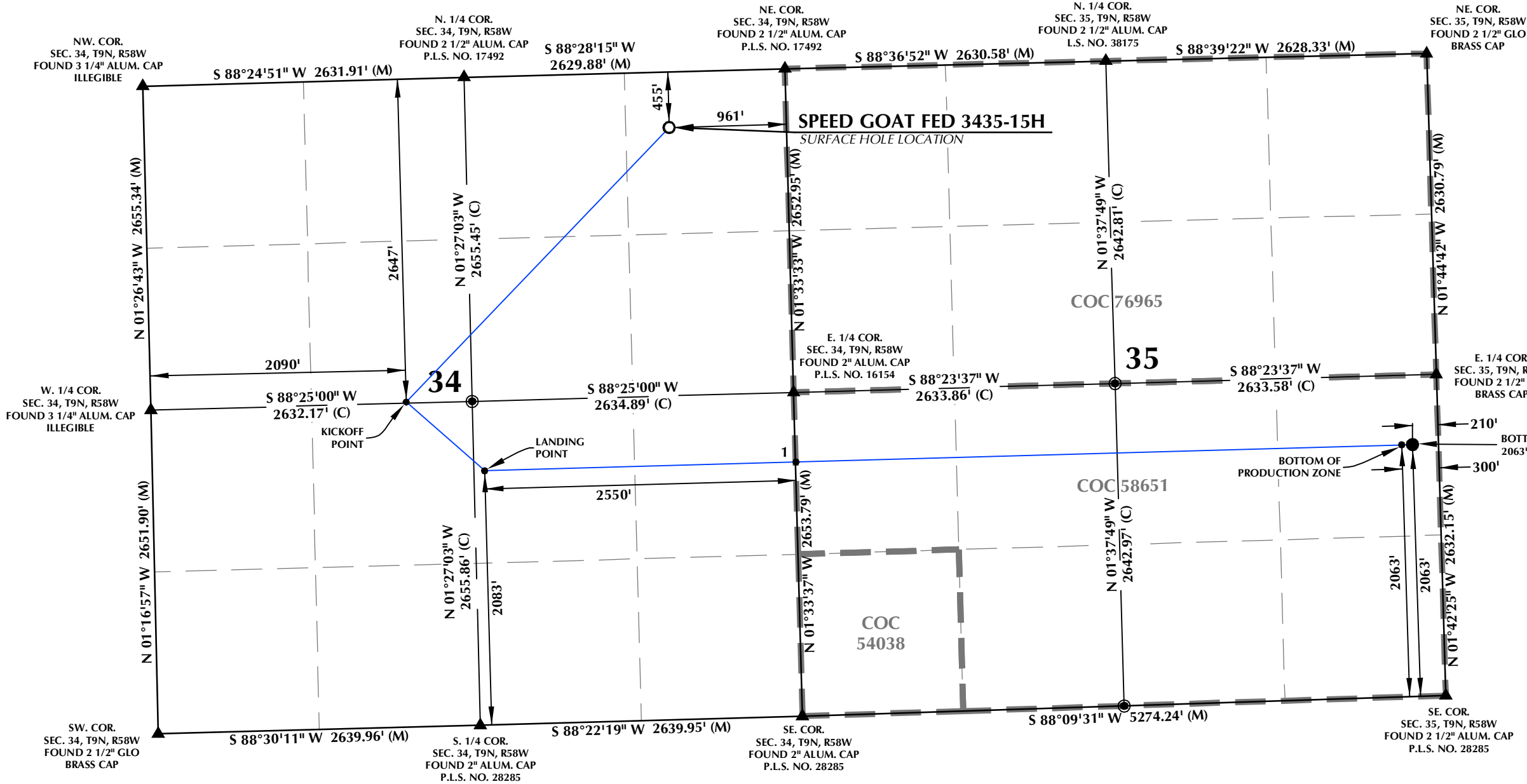


T9N, R58W



SURFACE HOLE LOCATION: NAD 83
GROUND ELEVATION= 4723.0'
LATITUDE= 40.713731°
LONGITUDE= -103.843786°
LATITUDE= 40°42'49.430"
LONGITUDE= -103°50'37.631"

KICKOFF POINT: NAD 83
LATITUDE= 40.707665°
LONGITUDE= -103.851710°
LATITUDE= 40°42'27.595"
LONGITUDE= -103°51'06.154"

LANDING POINT: NAD 83
LATITUDE= 40.706084°
LONGITUDE= -103.849430°
LATITUDE= 40°42'21.904"
LONGITUDE= -103°50'57.949"

BOTTOM OF PRODUCTION ZONE: NAD 83
LATITUDE= 40.706280°
LONGITUDE= -103.822314°
LATITUDE= 40°42'22.608"
LONGITUDE= -103°49'20.329"W

BOTTOM HOLE LOCATION: NAD 83
LATITUDE= 40.706283°
LONGITUDE= -103.821989°
LATITUDE= 40°42'22.620"
LONGITUDE= -103°49'19.160"

CERTIFICATE OF SURVEYOR:

THIS IS TO CERTIFY THAT THE ABOVE MAP WAS PREPARED FROM FIELD NOTES OF ACTUAL SURVEY MADE BY ME OR UNDER MY SUPERVISION AND THAT THE SAME ARE TRUE AND CORRECT TO THE BEST OF MY KNOWLEDGE AND BELIEF. THIS CERTIFICATE DOES NOT REPRESENT A LAND SURVEY THAT OR IMPROVEMENT SURVEY PLAT AS DEFINED BY C.R.S. 38-51-102 AND CANNOT BE RELIED UPON TO DETERMINE OWNERSHIP.

Randall K. French
RANDALL K. FRENCH
PROFESSIONAL LAND SURVEYOR
COLORADO REGISTRATION NUMBER 38512
1/26/24

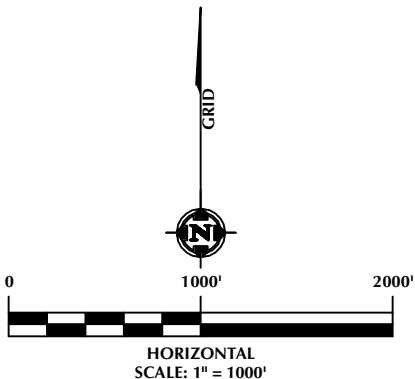
NOTICE:
ACCORDING TO COLORADO STATE LAW YOU MUST COMMENCE ANY ACTION BASED UPON ANY DEFECT IN THIS SURVEY WITHIN THREE YEARS AFTER FIRST DISCOVERY OF SUCH DEFECT. IN NO EVENT MAY ANY ACTION BE BASED UPON ANY DEFECT IN THIS SURVEY BE COMMENCED MORE THAN TEN YEARS FROM THE DATE ON THE CERTIFICATION SHOWN HEREON.

FEDERAL LEASE CROSSINGS

- 1) LAT: 40.706152°
LON: -103.840235°
LAT: 40°42'22.147"
LON: -103°50'24.845"
2083' FSL, 0' FEL

NOTES:

- ▲ INDICATES SECTION CORNER.
- INDICATES CALCULATED CORNER.
- ELEVATION BASED ON NAVD88 (GEOID18).
- BASIS OF BEARINGS DERIVED FROM COLORADO COORDINATE SYSTEM OF 1983, NORTH ZONE.
- ALL MEASURED DISTANCES ARE GRID.
COMBINED SCALE FACTOR: .99976710 CALCULATED FROM THE NE. CORNER OF SECTION 34, T9N, R58W.
- OPERATOR: RYAN GROVES / PDOP = 1.1
- WELL FOOTAGES ARE MEASURED AT RIGHT ANGLES TO THE SECTION LINES.



LOVELAND OFFICE
6706 North Franklin Avenue
Loveland, Colorado 80538
Phone 970-776-4331
SHERIDAN OFFICE
1095 Saberton Avenue
Sheridan, Wyoming 82801
Phone 307-674-0609



1125 17th Street, Suite 550
Denver, Colorado 80202

WELL PAD - SPEED GOAT FED 3432-3435

SPEED GOAT FED 3435-15H
WELL LOCATION CERTIFICATE
455' FNL & 961' FEL (NENE) (SURFACE HOLE LOCATION)
2647' FNL & 2090' FWL (SEWN) (KICKOFF POINT)
2083' FSL & 2550' FEL (NWSE) (LANDING POINT)
LOCATED IN SECTION 34
2063' FSL & 300' FEL (NESE) (BOTTOM OF PRODUCTION ZONE)
2063' FSL & 210' FEL (NESE) (BOTTOM HOLE LOCATION)
LOCATED IN SECTION 35
T9N, R58W, 6TH P.M.
WELD COUNTY, COLORADO

DRAFTED BY:	SJM	CHECKED BY:	RKF
DATE DRAFTED:	6/13/23	DATE SURVEYED:	5/22/23
REVISED:	1/26/24	FILE NAME:	22-200