

VERDAD RESOURCES

WATTENBERG FIELD

9N-58W-34 SPEED GOAT FED PAD

SPEED GOAT FED 3432-08H

Plan C

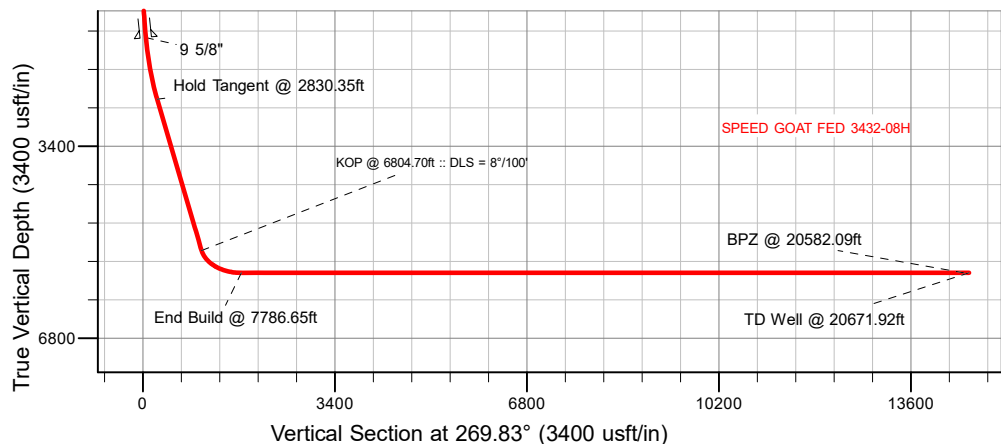
Plan: Permit Rev-1

Standard Planning Report

25 January, 2024

VERDAD RESOURCES

CASING DETAILS			
TVD	MD	Name	Size
1474.00	1497.17	9 5/8"	9-5/8



SECTION DETAILS										
Sec	MD	Inc	Azi	TVD	+N/-S	+E/-W	Dleg	TFace	VSect	Target
1	0.00	0.00	0.00	0.00	0.00	0.00	0.00	0.00	0.00	
2	449.85	0.00	0.00	449.85	0.00	0.00	0.00	0.00	0.00	
3	2830.35	47.61	195.41	2565.71	-899.87	-248.03	2.00	195.41	250.70	
4	6804.70	47.61	195.41	5245.11	-3729.69	-1028.03	0.00	0.00	1039.09	
5	7786.65	90.00	269.83	5640.00	-4148.52	-1728.72	8.00	79.35	1741.02	
6	20671.92	90.00	269.83	5640.00	-4187.60	-14613.93	0.00	0.00	14626.29	SPEED GOAT FED 3432-08H_BHL

WELLBORE TARGET DETAILS (LAT/LONG)									
Name				MD	TVD	Northing	Easting	Latitude	Longitude
SPEED	GOAT	FED	3432-08H_SHL	0.00	0.00	1507255.54	3459108.11	40.714038	-103.843790
SPEED	GOAT	FED	3432-08H_KOP	2830.35	5245.11	1503507.30	3458149.92	40.703801	-103.847028
SPEED	GOAT	FED	3432-08H_LP	7786.65	5640.00	1503075.46	3457457.17	40.702651	-103.854905
SPEED	GOAT	FED	3432-08H_BPZ	20582.99	5640.00	1502798.46	3444664.74	40.702535	-103.896173
SPEED	GOAT	FED	3432-08H_BHL	206871.02	5640.00	1502795.74	3444574.94	40.702532	-103.896497

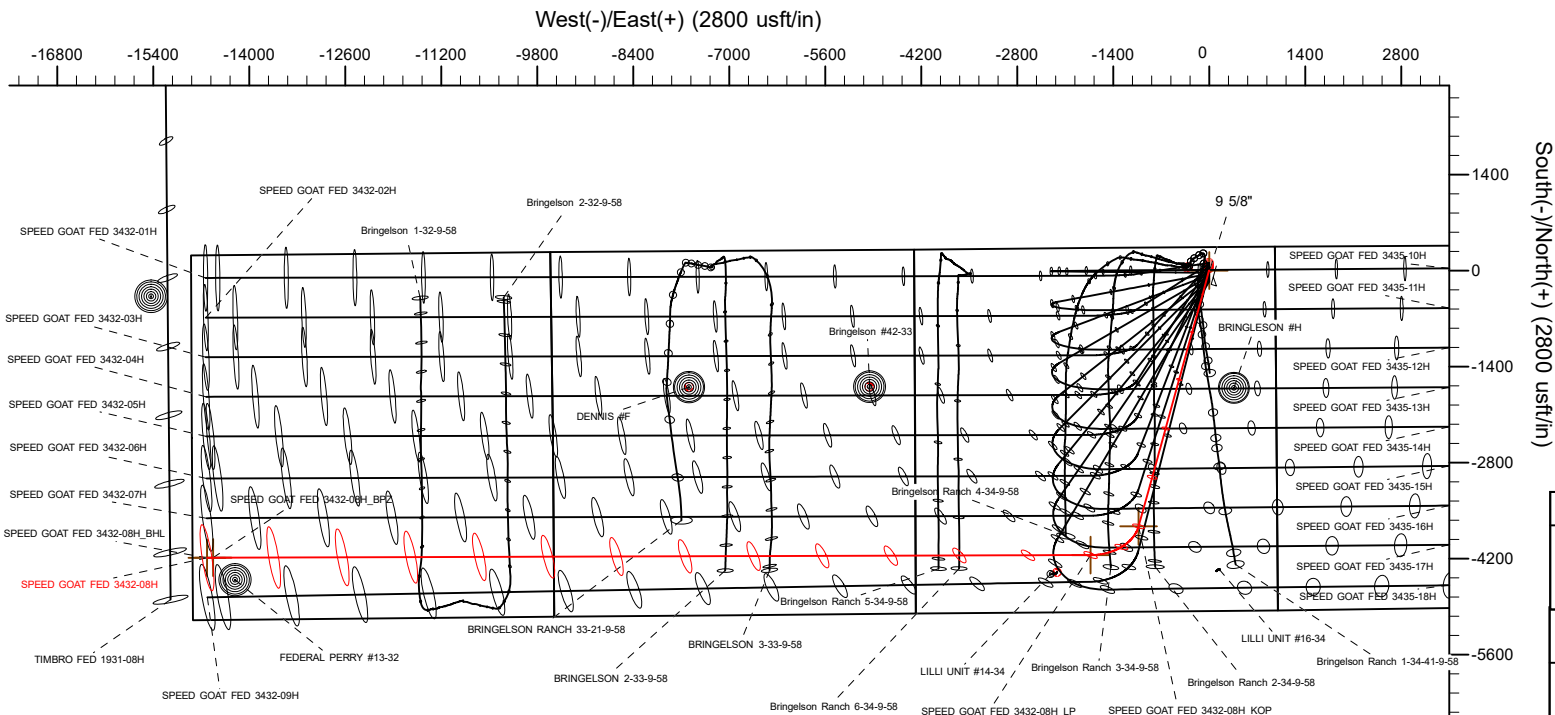
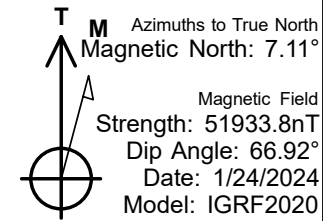
SHL
343' FNL
961' FEL

KOP
1246' FSL
2021' FEL

LP
833' FSL
2551' FWL

BPZ
908' FSL
300' FWL

BHL
908' FSL
210' FWL



WELL DETAILS: SPEED GOAT FED 3432-08H	
GL = 4724' RKB = 20' @ 4744.00usft (RIG)	
Plan: Permit Rev-1 (SPEED GOAT FED 3432-08H/Plan C)	
Date:	1/25/2024

Planning Report

Database:	EDM 5000.16 Single User Db	Local Co-ordinate Reference:	Well SPEED GOAT FED 3432-08H
Company:	VERDAD RESOURCES	TVD Reference:	RKB = 20' @ 4744.00usft (RIG)
Project:	WATTENBERG FIELD	MD Reference:	RKB = 20' @ 4744.00usft (RIG)
Site:	9N-58W-34 SPEED GOAT FED PAD	North Reference:	True
Well:	SPEED GOAT FED 3432-08H	Survey Calculation Method:	Minimum Curvature
Wellbore:	Plan C		
Design:	Permit Rev-1		

Project	WATTENBERG FIELD		
Map System:	US State Plane 1983	System Datum:	Mean Sea Level
Geo Datum:	North American Datum 1983		
Map Zone:	Colorado Northern Zone		

Site	9N-58W-34 SPEED GOAT FED PAD			
Site Position:		Northing:	1,507,367.36 usft	Latitude: 40.714345
From:	Lat/Long	Easting:	3,459,105.19 usft	Longitude: -103.843793
Position Uncertainty:	0.00 usft	Slot Radius:	13-3/16 "	

Well	SPEED GOAT FED 3432-08H			
Well Position	+N/-S	0.00 usft	Northing:	1,507,255.55 usft
	+E/-W	0.00 usft	Easting:	3,459,108.11 usft
Position Uncertainty		3.28 usft	Wellhead Elevation:	usft
Grid Convergence:		1.07 °	Ground Level:	4,724.00 usft

Wellbore	Plan C				
Magnetics	Model Name	Sample Date	Declination (°)	Dip Angle (°)	Field Strength (nT)
	IGRF202013	1/24/2024	7.11	66.92	51,933.83222094

Design	Permit Rev-1				
Audit Notes:					
Version:		Phase:	PLAN	Tie On Depth:	0.00
Vertical Section:	Depth From (TVD) (usft)	+N/-S (usft)	+E/-W (usft)	Direction (°)	
	0.00	0.00	0.00	269.83	

Plan Survey Tool Program		Date	1/25/2024		
Depth From (usft)	Depth To (usft)	Survey (Wellbore)	Tool Name	Remarks	
1	0.00	1,474.00	Permit Rev-1 (Plan C)	ISCWSA MWD	
				Fixed:v2:standard declination	
2	1,474.00	20,671.92	Permit Rev-1 (Plan C)	ISCWSA MWD	
				Fixed:v2:standard declination	

Planning Report

Database:	EDM 5000.16 Single User Db	Local Co-ordinate Reference:	Well SPEED GOAT FED 3432-08H
Company:	VERDAD RESOURCES	TVD Reference:	RKB = 20' @ 4744.00usft (RIG)
Project:	WATTENBERG FIELD	MD Reference:	RKB = 20' @ 4744.00usft (RIG)
Site:	9N-58W-34 SPEED GOAT FED PAD	North Reference:	True
Well:	SPEED GOAT FED 3432-08H	Survey Calculation Method:	Minimum Curvature
Wellbore:	Plan C		
Design:	Permit Rev-1		

Plan Sections										
Measured Depth (usft)	Inclination (°)	Azimuth (°)	Vertical Depth (usft)	+N/-S (usft)	+E/-W (usft)	Dogleg Rate (°/100usft)	Build Rate (°/100usft)	Turn Rate (°/100usft)	TFO (°)	Target
0.00	0.00	0.00	0.00	0.00	0.00	0.00	0.00	0.00	0.00	
449.85	0.00	0.00	449.85	0.00	0.00	0.00	0.00	0.00	0.00	
2,830.35	47.61	195.41	2,565.71	-899.87	-248.03	2.00	2.00	0.00	195.41	
6,804.70	47.61	195.41	5,245.11	-3,729.69	-1,028.03	0.00	0.00	0.00	0.00	
7,786.65	90.00	269.83	5,640.00	-4,148.52	-1,728.72	8.00	4.32	7.58	79.35	
20,671.92	90.00	269.83	5,640.00	-4,187.60	-14,613.93	0.00	0.00	0.00	0.00	SPEED GOAT FED 3

Planning Report

Database:	EDM 5000.16 Single User Db	Local Co-ordinate Reference:	Well SPEED GOAT FED 3432-08H
Company:	VERDAD RESOURCES	TVD Reference:	RKB = 20' @ 4744.00usft (RIG)
Project:	WATTENBERG FIELD	MD Reference:	RKB = 20' @ 4744.00usft (RIG)
Site:	9N-58W-34 SPEED GOAT FED PAD	North Reference:	True
Well:	SPEED GOAT FED 3432-08H	Survey Calculation Method:	Minimum Curvature
Wellbore:	Plan C		
Design:	Permit Rev-1		

Planned Survey									
Measured Depth (usft)	Inclination (°)	Azimuth (°)	Vertical Depth (usft)	+N/-S (usft)	+E/-W (usft)	Vertical Section (usft)	Dogleg Rate (°/100usft)	Build Rate (°/100usft)	Turn Rate (°/100usft)
0.00	0.00	0.00	0.00	0.00	0.00	0.00	0.00	0.00	0.00
100.00	0.00	0.00	100.00	0.00	0.00	0.00	0.00	0.00	0.00
200.00	0.00	0.00	200.00	0.00	0.00	0.00	0.00	0.00	0.00
300.00	0.00	0.00	300.00	0.00	0.00	0.00	0.00	0.00	0.00
400.00	0.00	0.00	400.00	0.00	0.00	0.00	0.00	0.00	0.00
449.85	0.00	0.00	449.85	0.00	0.00	0.00	0.00	0.00	0.00
Begin Nudge @ 449.85ft									
500.00	1.00	195.41	500.00	-0.42	-0.12	0.12	2.00	2.00	0.00
600.00	3.00	195.41	599.93	-3.79	-1.05	1.06	2.00	2.00	0.00
700.00	5.00	195.41	699.68	-10.52	-2.90	2.93	2.00	2.00	0.00
800.00	7.00	195.41	799.13	-20.60	-5.68	5.74	2.00	2.00	0.00
900.00	9.00	195.41	898.15	-34.02	-9.38	9.48	2.00	2.00	0.00
1,000.00	11.00	195.41	996.62	-50.77	-13.99	14.14	2.00	2.00	0.00
1,100.00	13.00	195.41	1,094.43	-70.82	-19.52	19.73	2.00	2.00	0.00
1,200.00	15.00	195.41	1,191.46	-94.14	-25.95	26.23	2.00	2.00	0.00
1,300.00	17.00	195.41	1,287.58	-120.72	-33.27	33.63	2.00	2.00	0.00
1,400.00	19.00	195.41	1,382.68	-150.51	-41.49	41.93	2.00	2.00	0.00
1,497.17	20.95	195.41	1,474.00	-182.51	-50.31	50.85	2.00	2.00	0.00
9 5/8"									
1,500.00	21.00	195.41	1,476.64	-183.49	-50.58	51.12	2.00	2.00	0.00
1,600.00	23.00	195.41	1,569.35	-219.61	-60.53	61.18	2.00	2.00	0.00
1,700.00	25.00	195.41	1,660.70	-258.82	-71.34	72.11	2.00	2.00	0.00
1,800.00	27.00	195.41	1,750.57	-301.08	-82.99	83.88	2.00	2.00	0.00
1,900.00	29.00	195.41	1,838.86	-346.35	-95.46	96.49	2.00	2.00	0.00
2,000.00	31.00	195.41	1,925.45	-394.55	-108.75	109.92	2.00	2.00	0.00
2,100.00	33.00	195.41	2,010.25	-445.64	-122.83	124.15	2.00	2.00	0.00
2,200.00	35.00	195.41	2,093.15	-499.55	-137.69	139.17	2.00	2.00	0.00
2,300.00	37.00	195.41	2,174.04	-556.21	-153.31	154.96	2.00	2.00	0.00
2,400.00	39.00	195.41	2,252.84	-615.57	-169.67	171.50	2.00	2.00	0.00
2,500.00	41.00	195.41	2,329.43	-677.54	-186.75	188.76	2.00	2.00	0.00
2,600.00	43.00	195.41	2,403.74	-742.05	-204.53	206.73	2.00	2.00	0.00
2,700.00	45.00	195.41	2,475.67	-809.01	-222.99	225.39	2.00	2.00	0.00
2,800.00	47.00	195.41	2,545.13	-878.36	-242.11	244.71	2.00	2.00	0.00
2,830.35	47.61	195.41	2,565.71	-899.87	-248.03	250.70	2.00	2.00	0.00
Hold Tangent @ 2830.35ft									
2,900.00	47.61	195.41	2,612.66	-949.46	-261.70	264.52	0.00	0.00	0.00
3,000.00	47.61	195.41	2,680.08	-1,020.66	-281.33	284.36	0.00	0.00	0.00
3,100.00	47.61	195.41	2,747.50	-1,091.86	-300.95	304.19	0.00	0.00	0.00
3,200.00	47.61	195.41	2,814.91	-1,163.07	-320.58	324.03	0.00	0.00	0.00
3,300.00	47.61	195.41	2,882.33	-1,234.27	-340.21	343.87	0.00	0.00	0.00
3,400.00	47.61	195.41	2,949.75	-1,305.47	-359.83	363.70	0.00	0.00	0.00
3,500.00	47.61	195.41	3,017.17	-1,376.67	-379.46	383.54	0.00	0.00	0.00
3,600.00	47.61	195.41	3,084.58	-1,447.87	-399.08	403.38	0.00	0.00	0.00
3,700.00	47.61	195.41	3,152.00	-1,519.08	-418.71	423.21	0.00	0.00	0.00
3,800.00	47.61	195.41	3,219.42	-1,590.28	-438.33	443.05	0.00	0.00	0.00
3,900.00	47.61	195.41	3,286.84	-1,661.48	-457.96	462.89	0.00	0.00	0.00
4,000.00	47.61	195.41	3,354.25	-1,732.68	-477.59	482.72	0.00	0.00	0.00
4,100.00	47.61	195.41	3,421.67	-1,803.88	-497.21	502.56	0.00	0.00	0.00
4,200.00	47.61	195.41	3,489.09	-1,875.09	-516.84	522.40	0.00	0.00	0.00
4,300.00	47.61	195.41	3,556.51	-1,946.29	-536.46	542.23	0.00	0.00	0.00
4,400.00	47.61	195.41	3,623.92	-2,017.49	-556.09	562.07	0.00	0.00	0.00
4,500.00	47.61	195.41	3,691.34	-2,088.69	-575.71	581.91	0.00	0.00	0.00
4,600.00	47.61	195.41	3,758.76	-2,159.89	-595.34	601.75	0.00	0.00	0.00

Planning Report

Database:	EDM 5000.16 Single User Db	Local Co-ordinate Reference:	Well SPEED GOAT FED 3432-08H
Company:	VERDAD RESOURCES	TVD Reference:	RKB = 20' @ 4744.00usft (RIG)
Project:	WATTENBERG FIELD	MD Reference:	RKB = 20' @ 4744.00usft (RIG)
Site:	9N-58W-34 SPEED GOAT FED PAD	North Reference:	True
Well:	SPEED GOAT FED 3432-08H	Survey Calculation Method:	Minimum Curvature
Wellbore:	Plan C		
Design:	Permit Rev-1		

Planned Survey									
Measured Depth (usft)	Inclination (°)	Azimuth (°)	Vertical Depth (usft)	+N/-S (usft)	+E/-W (usft)	Vertical Section (usft)	Dogleg Rate (°/100usft)	Build Rate (°/100usft)	Turn Rate (°/100usft)
4,700.00	47.61	195.41	3,826.17	-2,231.10	-614.97	621.58	0.00	0.00	0.00
4,800.00	47.61	195.41	3,893.59	-2,302.30	-634.59	641.42	0.00	0.00	0.00
4,900.00	47.61	195.41	3,961.01	-2,373.50	-654.22	661.26	0.00	0.00	0.00
5,000.00	47.61	195.41	4,028.43	-2,444.70	-673.84	681.09	0.00	0.00	0.00
5,100.00	47.61	195.41	4,095.84	-2,515.90	-693.47	700.93	0.00	0.00	0.00
5,200.00	47.61	195.41	4,163.26	-2,587.11	-713.09	720.77	0.00	0.00	0.00
5,300.00	47.61	195.41	4,230.68	-2,658.31	-732.72	740.60	0.00	0.00	0.00
5,400.00	47.61	195.41	4,298.10	-2,729.51	-752.35	760.44	0.00	0.00	0.00
5,500.00	47.61	195.41	4,365.51	-2,800.71	-771.97	780.28	0.00	0.00	0.00
5,600.00	47.61	195.41	4,432.93	-2,871.91	-791.60	800.11	0.00	0.00	0.00
5,700.00	47.61	195.41	4,500.35	-2,943.12	-811.22	819.95	0.00	0.00	0.00
5,800.00	47.61	195.41	4,567.77	-3,014.32	-830.85	839.79	0.00	0.00	0.00
5,900.00	47.61	195.41	4,635.18	-3,085.52	-850.47	859.62	0.00	0.00	0.00
6,000.00	47.61	195.41	4,702.60	-3,156.72	-870.10	879.46	0.00	0.00	0.00
6,100.00	47.61	195.41	4,770.02	-3,227.92	-889.72	899.30	0.00	0.00	0.00
6,200.00	47.61	195.41	4,837.43	-3,299.13	-909.35	919.14	0.00	0.00	0.00
6,300.00	47.61	195.41	4,904.85	-3,370.33	-928.98	938.97	0.00	0.00	0.00
6,400.00	47.61	195.41	4,972.27	-3,441.53	-948.60	958.81	0.00	0.00	0.00
6,500.00	47.61	195.41	5,039.69	-3,512.73	-968.23	978.65	0.00	0.00	0.00
6,600.00	47.61	195.41	5,107.10	-3,583.94	-987.85	998.48	0.00	0.00	0.00
6,700.00	47.61	195.41	5,174.52	-3,655.14	-1,007.48	1,018.32	0.00	0.00	0.00
6,804.70	47.61	195.41	5,245.11	-3,729.69	-1,028.03	1,039.09	0.00	0.00	0.00
KOP @ 6804.70ft :: DLS = 8°/100'									
6,850.00	48.38	200.18	5,275.43	-3,761.72	-1,038.32	1,049.47	8.00	1.70	10.52
6,900.00	49.45	205.29	5,308.30	-3,796.45	-1,052.88	1,064.14	8.00	2.14	10.23
6,950.00	50.74	210.23	5,340.39	-3,830.36	-1,070.75	1,082.11	8.00	2.58	9.87
7,000.00	52.23	214.97	5,371.54	-3,863.29	-1,091.83	1,103.29	8.00	2.98	9.49
7,050.00	53.90	219.52	5,401.59	-3,895.08	-1,116.02	1,127.58	8.00	3.34	9.09
7,100.00	55.74	223.87	5,430.41	-3,925.57	-1,143.21	1,154.85	8.00	3.67	8.70
7,150.00	57.72	228.02	5,457.84	-3,954.62	-1,173.25	1,184.98	8.00	3.97	8.31
7,200.00	59.83	232.00	5,483.77	-3,982.07	-1,206.01	1,217.82	8.00	4.23	7.94
7,250.00	62.06	235.80	5,508.05	-4,007.81	-1,241.32	1,253.21	8.00	4.46	7.60
7,300.00	64.39	239.44	5,530.58	-4,031.69	-1,279.02	1,290.97	8.00	4.66	7.29
7,350.00	66.80	242.94	5,551.24	-4,053.62	-1,318.91	1,330.93	8.00	4.83	7.00
7,400.00	69.29	246.32	5,569.93	-4,073.47	-1,360.81	1,372.89	8.00	4.98	6.75
7,450.00	71.85	249.58	5,586.57	-4,091.16	-1,404.50	1,416.64	8.00	5.11	6.53
7,500.00	74.45	252.76	5,601.06	-4,106.59	-1,449.79	1,461.97	8.00	5.21	6.34
7,550.00	77.10	255.85	5,613.35	-4,119.69	-1,496.44	1,508.66	8.00	5.30	6.18
7,600.00	79.79	258.87	5,623.36	-4,130.41	-1,544.23	1,556.48	8.00	5.37	6.05
7,650.00	82.50	261.85	5,631.06	-4,138.67	-1,592.93	1,605.20	8.00	5.43	5.95
7,700.00	85.24	264.78	5,636.40	-4,144.46	-1,642.29	1,654.58	8.00	5.47	5.87
7,750.00	87.98	267.70	5,639.35	-4,147.73	-1,692.09	1,704.39	8.00	5.49	5.83
7,786.65	90.00	269.83	5,640.00	-4,148.52	-1,728.72	1,741.02	8.00	5.50	5.81
End Build @ 7786.65ft									
7,800.00	90.00	269.83	5,640.00	-4,148.56	-1,742.07	1,754.37	0.00	0.00	0.00
7,900.00	90.00	269.83	5,640.00	-4,148.86	-1,842.07	1,854.37	0.00	0.00	0.00
8,000.00	90.00	269.83	5,640.00	-4,149.17	-1,942.07	1,954.37	0.00	0.00	0.00
8,100.00	90.00	269.83	5,640.00	-4,149.47	-2,042.07	2,054.37	0.00	0.00	0.00
8,200.00	90.00	269.83	5,640.00	-4,149.77	-2,142.07	2,154.37	0.00	0.00	0.00
8,300.00	90.00	269.83	5,640.00	-4,150.08	-2,242.07	2,254.37	0.00	0.00	0.00
8,400.00	90.00	269.83	5,640.00	-4,150.38	-2,342.07	2,354.37	0.00	0.00	0.00
8,500.00	90.00	269.83	5,640.00	-4,150.68	-2,442.07	2,454.37	0.00	0.00	0.00
8,600.00	90.00	269.83	5,640.00	-4,150.99	-2,542.07	2,554.37	0.00	0.00	0.00
8,700.00	90.00	269.83	5,640.00	-4,151.29	-2,642.07	2,654.37	0.00	0.00	0.00

Planning Report

Database:	EDM 5000.16 Single User Db	Local Co-ordinate Reference:	Well SPEED GOAT FED 3432-08H
Company:	VERDAD RESOURCES	TVD Reference:	RKB = 20' @ 4744.00usft (RIG)
Project:	WATTENBERG FIELD	MD Reference:	RKB = 20' @ 4744.00usft (RIG)
Site:	9N-58W-34 SPEED GOAT FED PAD	North Reference:	True
Well:	SPEED GOAT FED 3432-08H	Survey Calculation Method:	Minimum Curvature
Wellbore:	Plan C		
Design:	Permit Rev-1		

Planned Survey										
Measured Depth (usft)	Inclination (°)	Azimuth (°)	Vertical Depth (usft)	+N/-S (usft)	+E/-W (usft)	Vertical Section (usft)	Dogleg Rate (°/100usft)	Build Rate (°/100usft)	Turn Rate (°/100usft)	
8,800.00	90.00	269.83	5,640.00	-4,151.59	-2,742.07	2,754.37	0.00	0.00	0.00	
8,900.00	90.00	269.83	5,640.00	-4,151.90	-2,842.07	2,854.37	0.00	0.00	0.00	
9,000.00	90.00	269.83	5,640.00	-4,152.20	-2,942.07	2,954.37	0.00	0.00	0.00	
9,100.00	90.00	269.83	5,640.00	-4,152.50	-3,042.07	3,054.37	0.00	0.00	0.00	
9,200.00	90.00	269.83	5,640.00	-4,152.81	-3,142.07	3,154.37	0.00	0.00	0.00	
9,300.00	90.00	269.83	5,640.00	-4,153.11	-3,242.06	3,254.37	0.00	0.00	0.00	
9,400.00	90.00	269.83	5,640.00	-4,153.41	-3,342.06	3,354.37	0.00	0.00	0.00	
9,500.00	90.00	269.83	5,640.00	-4,153.72	-3,442.06	3,454.37	0.00	0.00	0.00	
9,600.00	90.00	269.83	5,640.00	-4,154.02	-3,542.06	3,554.37	0.00	0.00	0.00	
9,700.00	90.00	269.83	5,640.00	-4,154.32	-3,642.06	3,654.37	0.00	0.00	0.00	
9,800.00	90.00	269.83	5,640.00	-4,154.63	-3,742.06	3,754.37	0.00	0.00	0.00	
9,900.00	90.00	269.83	5,640.00	-4,154.93	-3,842.06	3,854.37	0.00	0.00	0.00	
10,000.00	90.00	269.83	5,640.00	-4,155.23	-3,942.06	3,954.37	0.00	0.00	0.00	
10,100.00	90.00	269.83	5,640.00	-4,155.54	-4,042.06	4,054.37	0.00	0.00	0.00	
10,200.00	90.00	269.83	5,640.00	-4,155.84	-4,142.06	4,154.37	0.00	0.00	0.00	
10,300.00	90.00	269.83	5,640.00	-4,156.14	-4,242.06	4,254.37	0.00	0.00	0.00	
10,400.00	90.00	269.83	5,640.00	-4,156.45	-4,342.06	4,354.37	0.00	0.00	0.00	
10,500.00	90.00	269.83	5,640.00	-4,156.75	-4,442.06	4,454.37	0.00	0.00	0.00	
10,600.00	90.00	269.83	5,640.00	-4,157.05	-4,542.06	4,554.37	0.00	0.00	0.00	
10,700.00	90.00	269.83	5,640.00	-4,157.36	-4,642.06	4,654.37	0.00	0.00	0.00	
10,800.00	90.00	269.83	5,640.00	-4,157.66	-4,742.06	4,754.37	0.00	0.00	0.00	
10,900.00	90.00	269.83	5,640.00	-4,157.96	-4,842.06	4,854.37	0.00	0.00	0.00	
11,000.00	90.00	269.83	5,640.00	-4,158.26	-4,942.06	4,954.37	0.00	0.00	0.00	
11,100.00	90.00	269.83	5,640.00	-4,158.57	-5,042.06	5,054.37	0.00	0.00	0.00	
11,200.00	90.00	269.83	5,640.00	-4,158.87	-5,142.06	5,154.37	0.00	0.00	0.00	
11,300.00	90.00	269.83	5,640.00	-4,159.17	-5,242.06	5,254.37	0.00	0.00	0.00	
11,400.00	90.00	269.83	5,640.00	-4,159.48	-5,342.06	5,354.37	0.00	0.00	0.00	
11,500.00	90.00	269.83	5,640.00	-4,159.78	-5,442.05	5,454.37	0.00	0.00	0.00	
11,600.00	90.00	269.83	5,640.00	-4,160.08	-5,542.05	5,554.37	0.00	0.00	0.00	
11,700.00	90.00	269.83	5,640.00	-4,160.39	-5,642.05	5,654.37	0.00	0.00	0.00	
11,800.00	90.00	269.83	5,640.00	-4,160.69	-5,742.05	5,754.37	0.00	0.00	0.00	
11,900.00	90.00	269.83	5,640.00	-4,160.99	-5,842.05	5,854.37	0.00	0.00	0.00	
12,000.00	90.00	269.83	5,640.00	-4,161.30	-5,942.05	5,954.37	0.00	0.00	0.00	
12,100.00	90.00	269.83	5,640.00	-4,161.60	-6,042.05	6,054.37	0.00	0.00	0.00	
12,200.00	90.00	269.83	5,640.00	-4,161.90	-6,142.05	6,154.37	0.00	0.00	0.00	
12,300.00	90.00	269.83	5,640.00	-4,162.21	-6,242.05	6,254.37	0.00	0.00	0.00	
12,400.00	90.00	269.83	5,640.00	-4,162.51	-6,342.05	6,354.37	0.00	0.00	0.00	
12,500.00	90.00	269.83	5,640.00	-4,162.81	-6,442.05	6,454.37	0.00	0.00	0.00	
12,600.00	90.00	269.83	5,640.00	-4,163.12	-6,542.05	6,554.37	0.00	0.00	0.00	
12,700.00	90.00	269.83	5,640.00	-4,163.42	-6,642.05	6,654.37	0.00	0.00	0.00	
12,800.00	90.00	269.83	5,640.00	-4,163.72	-6,742.05	6,754.37	0.00	0.00	0.00	
12,900.00	90.00	269.83	5,640.00	-4,164.03	-6,842.05	6,854.37	0.00	0.00	0.00	
13,000.00	90.00	269.83	5,640.00	-4,164.33	-6,942.05	6,954.37	0.00	0.00	0.00	
13,100.00	90.00	269.83	5,640.00	-4,164.63	-7,042.05	7,054.37	0.00	0.00	0.00	
13,200.00	90.00	269.83	5,640.00	-4,164.94	-7,142.05	7,154.37	0.00	0.00	0.00	
13,300.00	90.00	269.83	5,640.00	-4,165.24	-7,242.05	7,254.37	0.00	0.00	0.00	
13,400.00	90.00	269.83	5,640.00	-4,165.54	-7,342.05	7,354.37	0.00	0.00	0.00	
13,500.00	90.00	269.83	5,640.00	-4,165.85	-7,442.05	7,454.37	0.00	0.00	0.00	
13,600.00	90.00	269.83	5,640.00	-4,166.15	-7,542.05	7,554.37	0.00	0.00	0.00	
13,700.00	90.00	269.83	5,640.00	-4,166.45	-7,642.04	7,654.37	0.00	0.00	0.00	
13,800.00	90.00	269.83	5,640.00	-4,166.76	-7,742.04	7,754.37	0.00	0.00	0.00	
13,900.00	90.00	269.83	5,640.00	-4,167.06	-7,842.04	7,854.37	0.00	0.00	0.00	
14,000.00	90.00	269.83	5,640.00	-4,167.36	-7,942.04	7,954.37	0.00	0.00	0.00	
14,100.00	90.00	269.83	5,640.00	-4,167.67	-8,042.04	8,054.37	0.00	0.00	0.00	

Planning Report

Database:	EDM 5000.16 Single User Db	Local Co-ordinate Reference:	Well SPEED GOAT FED 3432-08H
Company:	VERDAD RESOURCES	TVD Reference:	RKB = 20' @ 4744.00usft (RIG)
Project:	WATTENBERG FIELD	MD Reference:	RKB = 20' @ 4744.00usft (RIG)
Site:	9N-58W-34 SPEED GOAT FED PAD	North Reference:	True
Well:	SPEED GOAT FED 3432-08H	Survey Calculation Method:	Minimum Curvature
Wellbore:	Plan C		
Design:	Permit Rev-1		

Planned Survey									
Measured Depth (usft)	Inclination (°)	Azimuth (°)	Vertical Depth (usft)	+N/-S (usft)	+E/-W (usft)	Vertical Section (usft)	Dogleg Rate (°/100usft)	Build Rate (°/100usft)	Turn Rate (°/100usft)
14,200.00	90.00	269.83	5,640.00	-4,167.97	-8,142.04	8,154.37	0.00	0.00	0.00
14,300.00	90.00	269.83	5,640.00	-4,168.27	-8,242.04	8,254.37	0.00	0.00	0.00
14,400.00	90.00	269.83	5,640.00	-4,168.58	-8,342.04	8,354.37	0.00	0.00	0.00
14,500.00	90.00	269.83	5,640.00	-4,168.88	-8,442.04	8,454.37	0.00	0.00	0.00
14,600.00	90.00	269.83	5,640.00	-4,169.18	-8,542.04	8,554.37	0.00	0.00	0.00
14,700.00	90.00	269.83	5,640.00	-4,169.49	-8,642.04	8,654.37	0.00	0.00	0.00
14,800.00	90.00	269.83	5,640.00	-4,169.79	-8,742.04	8,754.37	0.00	0.00	0.00
14,900.00	90.00	269.83	5,640.00	-4,170.09	-8,842.04	8,854.37	0.00	0.00	0.00
15,000.00	90.00	269.83	5,640.00	-4,170.40	-8,942.04	8,954.37	0.00	0.00	0.00
15,100.00	90.00	269.83	5,640.00	-4,170.70	-9,042.04	9,054.37	0.00	0.00	0.00
15,200.00	90.00	269.83	5,640.00	-4,171.00	-9,142.04	9,154.37	0.00	0.00	0.00
15,300.00	90.00	269.83	5,640.00	-4,171.31	-9,242.04	9,254.37	0.00	0.00	0.00
15,400.00	90.00	269.83	5,640.00	-4,171.61	-9,342.04	9,354.37	0.00	0.00	0.00
15,500.00	90.00	269.83	5,640.00	-4,171.91	-9,442.04	9,454.37	0.00	0.00	0.00
15,600.00	90.00	269.83	5,640.00	-4,172.22	-9,542.04	9,554.37	0.00	0.00	0.00
15,700.00	90.00	269.83	5,640.00	-4,172.52	-9,642.04	9,654.37	0.00	0.00	0.00
15,800.00	90.00	269.83	5,640.00	-4,172.82	-9,742.04	9,754.37	0.00	0.00	0.00
15,900.00	90.00	269.83	5,640.00	-4,173.12	-9,842.03	9,854.37	0.00	0.00	0.00
16,000.00	90.00	269.83	5,640.00	-4,173.43	-9,942.03	9,954.37	0.00	0.00	0.00
16,100.00	90.00	269.83	5,640.00	-4,173.73	-10,042.03	10,054.37	0.00	0.00	0.00
16,200.00	90.00	269.83	5,640.00	-4,174.03	-10,142.03	10,154.37	0.00	0.00	0.00
16,300.00	90.00	269.83	5,640.00	-4,174.34	-10,242.03	10,254.37	0.00	0.00	0.00
16,400.00	90.00	269.83	5,640.00	-4,174.64	-10,342.03	10,354.37	0.00	0.00	0.00
16,500.00	90.00	269.83	5,640.00	-4,174.94	-10,442.03	10,454.37	0.00	0.00	0.00
16,600.00	90.00	269.83	5,640.00	-4,175.25	-10,542.03	10,554.37	0.00	0.00	0.00
16,700.00	90.00	269.83	5,640.00	-4,175.55	-10,642.03	10,654.37	0.00	0.00	0.00
16,800.00	90.00	269.83	5,640.00	-4,175.85	-10,742.03	10,754.37	0.00	0.00	0.00
16,900.00	90.00	269.83	5,640.00	-4,176.16	-10,842.03	10,854.37	0.00	0.00	0.00
17,000.00	90.00	269.83	5,640.00	-4,176.46	-10,942.03	10,954.37	0.00	0.00	0.00
17,100.00	90.00	269.83	5,640.00	-4,176.76	-11,042.03	11,054.37	0.00	0.00	0.00
17,200.00	90.00	269.83	5,640.00	-4,177.07	-11,142.03	11,154.37	0.00	0.00	0.00
17,300.00	90.00	269.83	5,640.00	-4,177.37	-11,242.03	11,254.37	0.00	0.00	0.00
17,400.00	90.00	269.83	5,640.00	-4,177.67	-11,342.03	11,354.37	0.00	0.00	0.00
17,500.00	90.00	269.83	5,640.00	-4,177.98	-11,442.03	11,454.37	0.00	0.00	0.00
17,600.00	90.00	269.83	5,640.00	-4,178.28	-11,542.03	11,554.37	0.00	0.00	0.00
17,700.00	90.00	269.83	5,640.00	-4,178.58	-11,642.03	11,654.37	0.00	0.00	0.00
17,800.00	90.00	269.83	5,640.00	-4,178.89	-11,742.03	11,754.37	0.00	0.00	0.00
17,900.00	90.00	269.83	5,640.00	-4,179.19	-11,842.03	11,854.37	0.00	0.00	0.00
18,000.00	90.00	269.83	5,640.00	-4,179.49	-11,942.02	11,954.37	0.00	0.00	0.00
18,100.00	90.00	269.83	5,640.00	-4,179.80	-12,042.02	12,054.37	0.00	0.00	0.00
18,200.00	90.00	269.83	5,640.00	-4,180.10	-12,142.02	12,154.37	0.00	0.00	0.00
18,300.00	90.00	269.83	5,640.00	-4,180.40	-12,242.02	12,254.37	0.00	0.00	0.00
18,400.00	90.00	269.83	5,640.00	-4,180.71	-12,342.02	12,354.37	0.00	0.00	0.00
18,500.00	90.00	269.83	5,640.00	-4,181.01	-12,442.02	12,454.37	0.00	0.00	0.00
18,600.00	90.00	269.83	5,640.00	-4,181.31	-12,542.02	12,554.37	0.00	0.00	0.00
18,700.00	90.00	269.83	5,640.00	-4,181.62	-12,642.02	12,654.37	0.00	0.00	0.00
18,800.00	90.00	269.83	5,640.00	-4,181.92	-12,742.02	12,754.37	0.00	0.00	0.00
18,900.00	90.00	269.83	5,640.00	-4,182.22	-12,842.02	12,854.37	0.00	0.00	0.00
19,000.00	90.00	269.83	5,640.00	-4,182.53	-12,942.02	12,954.37	0.00	0.00	0.00
19,100.00	90.00	269.83	5,640.00	-4,182.83	-13,042.02	13,054.37	0.00	0.00	0.00
19,200.00	90.00	269.83	5,640.00	-4,183.13	-13,142.02	13,154.37	0.00	0.00	0.00
19,300.00	90.00	269.83	5,640.00	-4,183.44	-13,242.02	13,254.37	0.00	0.00	0.00
19,400.00	90.00	269.83	5,640.00	-4,183.74	-13,342.02	13,354.37	0.00	0.00	0.00
19,500.00	90.00	269.83	5,640.00	-4,184.04	-13,442.02	13,454.37	0.00	0.00	0.00

Planning Report

Database:	EDM 5000.16 Single User Db	Local Co-ordinate Reference:	Well SPEED GOAT FED 3432-08H
Company:	VERDAD RESOURCES	TVD Reference:	RKB = 20' @ 4744.00usft (RIG)
Project:	WATTENBERG FIELD	MD Reference:	RKB = 20' @ 4744.00usft (RIG)
Site:	9N-58W-34 SPEED GOAT FED PAD	North Reference:	True
Well:	SPEED GOAT FED 3432-08H	Survey Calculation Method:	Minimum Curvature
Wellbore:	Plan C		
Design:	Permit Rev-1		

Planned Survey									
Measured Depth (usft)	Inclination (°)	Azimuth (°)	Vertical Depth (usft)	+N/-S (usft)	+E/-W (usft)	Vertical Section (usft)	Dogleg Rate (°/100usft)	Build Rate (°/100usft)	Turn Rate (°/100usft)
19,600.00	90.00	269.83	5,640.00	-4,184.35	-13,542.02	13,554.37	0.00	0.00	0.00
19,700.00	90.00	269.83	5,640.00	-4,184.65	-13,642.02	13,654.37	0.00	0.00	0.00
19,800.00	90.00	269.83	5,640.00	-4,184.95	-13,742.02	13,754.37	0.00	0.00	0.00
19,900.00	90.00	269.83	5,640.00	-4,185.26	-13,842.02	13,854.37	0.00	0.00	0.00
20,000.00	90.00	269.83	5,640.00	-4,185.56	-13,942.02	13,954.37	0.00	0.00	0.00
20,100.00	90.00	269.83	5,640.00	-4,185.86	-14,042.02	14,054.37	0.00	0.00	0.00
20,200.00	90.00	269.83	5,640.00	-4,186.17	-14,142.01	14,154.37	0.00	0.00	0.00
20,300.00	90.00	269.83	5,640.00	-4,186.47	-14,242.01	14,254.37	0.00	0.00	0.00
20,400.00	90.00	269.83	5,640.00	-4,186.77	-14,342.01	14,354.37	0.00	0.00	0.00
20,500.00	90.00	269.83	5,640.00	-4,187.08	-14,442.01	14,454.37	0.00	0.00	0.00
20,582.09	90.00	269.83	5,640.00	-4,187.32	-14,524.10	14,536.46	0.00	0.00	0.00
BPZ @ 20582.09ft									
20,600.00	90.00	269.83	5,640.00	-4,187.38	-14,542.01	14,554.37	0.00	0.00	0.00
20,671.92	90.00	269.83	5,640.00	-4,187.60	-14,613.93	14,626.29	0.00	0.00	0.00
TD Well @ 20671.92ft									

Casing Points				
Measured Depth (usft)	Vertical Depth (usft)	Name	Casing Diameter (")	Hole Diameter (")
1,497.17	1,474.00	9 5/8"	9-5/8	13-1/2

Plan Annotations				
Measured Depth (usft)	Vertical Depth (usft)	Local Coordinates		Comment
		+N/-S (usft)	+E/-W (usft)	
449.85	449.85	0.00	0.00	Begin Nudge @ 449.85ft
2,830.35	2,565.71	-899.87	-248.03	Hold Tangent @ 2830.35ft
6,804.70	5,245.11	-3,729.69	-1,028.03	KOP @ 6804.70ft :: DLS = 8°/100'
7,786.65	5,640.00	-4,148.52	-1,728.72	End Build @ 7786.65ft
20,582.09	5,640.00	-4,187.32	-14,524.10	BPZ @ 20582.09ft
20,671.92	5,640.00	-4,187.60	-14,613.93	TD Well @ 20671.92ft