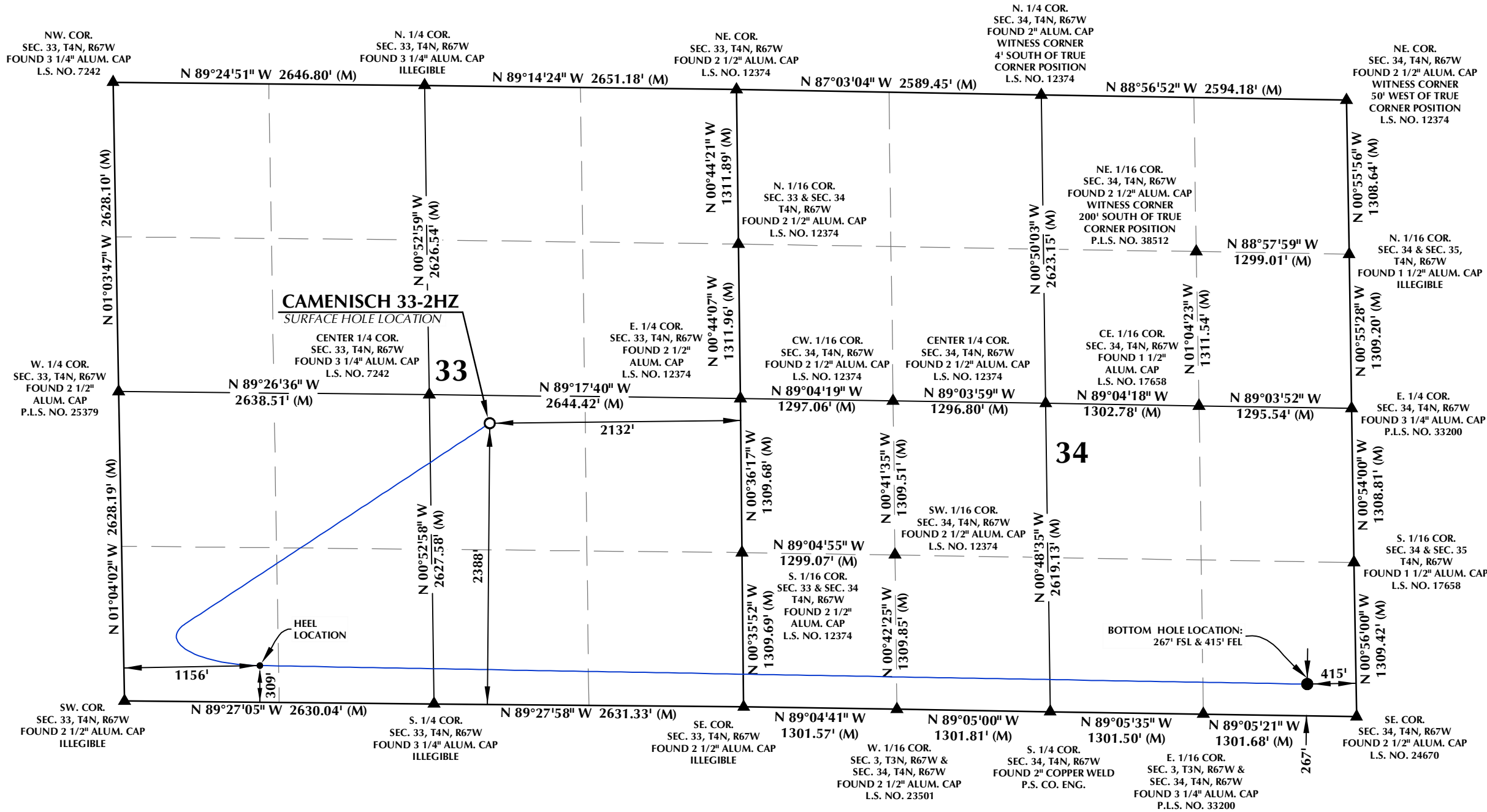


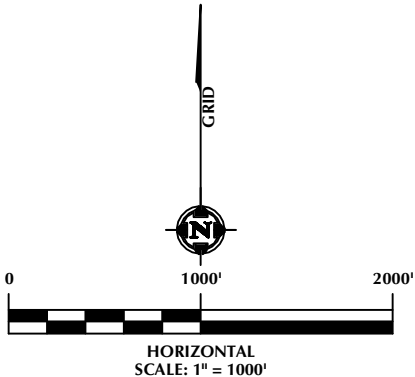
T4N, R67W



SURFACE HOLE LOCATION: NAD 83
GROUND ELEVATION= 4869.0'
LATITUDE= 40.268723°
LONGITUDE= -104.893691°
LATITUDE= 40°16'07.401"
LONGITUDE= -104°53'37.287"
HEEL LOCATION: NAD 83
LATITUDE= 40.263103°
LONGITUDE= -104.900738°
LATITUDE= 40°15'47.170"
LONGITUDE= -104°54'02.657"
BOTTOM HOLE LOCATION: NAD 83
LATITUDE= 40.262501°
LONGITUDE= -104.868862°
LATITUDE= 40°15'45.004"
LONGITUDE= -104°52'07.903"

CERTIFICATE OF SURVEYOR:
THIS IS TO CERTIFY THAT THE ABOVE PLAT WAS PREPARED FROM FIELD NOTES OF ACTUAL SURVEYS MADE BY ME OR UNDER MY SUPERVISION AND THAT THE SAME ARE TRUE AND CORRECT TO THE BEST OF MY KNOWLEDGE AND BELIEF. THIS CERTIFICATE DOES NOT REPRESENT A LAND SURVEY PLAT OR IMPROVEMENT SURVEY PLAT AS DEFINED BY C.R.S. 38-51-102 AND CANNOT BE REPLIED UPON TO DETERMINE OWNERSHIP.
RANDALL K. FRENCH
PROFESSIONAL LAND SURVEYOR
COLORADO REGISTRATION NUMBER 38512
7/12/23

- NOTES:**
- ▲ INDICATES SECTION CORNER.
 - INDICATES CALCULATED CORNER.
 - ELEVATION BASED ON NAVD88 (GEOID12B).
 - BASIS OF BEARINGS DERIVED FROM COLORADO COORDINATE SYSTEM OF 1983, NORTH ZONE.
 - ALL MEASURED DISTANCES ARE GRID.
COMBINED SCALE FACTOR: .99972730 CALCULATED FROM THE W. 1/4 CORNER OF SECTION 34, T4N, R67W.
 - OPERATOR: JEREMY GROVES / PDOP = 1.3
 - WELL FOOTAGES ARE MEASURED AT RIGHT ANGLES TO THE SECTION LINES.



LOVELAND OFFICE
6706 North Franklin Avenue
Loveland, Colorado 80538
Phone 970-776-4331
SHERIDAN OFFICE
1095 Saberton Avenue
Sheridan, Wyoming 82801
Phone 307-674-0609

Kerr-McGee Oil & Gas Onshore LP
1099 18th Street
Denver, Colorado 80202

WELL PAD - CAMENISCH 10-33HZ

CAMENISCH 33-2HZ
WELL LOCATION CERTIFICATE
2388' FSL & 2132' FEL (NWSE) (SURFACE HOLE LOCATION)
309' FSL & 1156' FWL (SWSW) (HEEL LOCATION)
LOCATED IN SECTION 33
267' FSL & 415' FEL (SESE) (BOTTOM HOLE LOCATION)
LOCATED IN SECTION 34
T4N, R67W, 6TH P.M.
WELD COUNTY, COLORADO

DRAFTED BY:	SJM	CHECKED BY:	RKF
DATE DRAFTED:	1/7/22	DATE SURVEYED:	12/8/21
REVISED:	7/12/23	FILE NAME:	17-156