



**SECTOR CEMENT BOND
GAMMA RAY
CCL LOG**

Comp. OCCIDENTAL PETROLEUM CORP.
Well MEGAN STATE H15-32D
Field WATTENBURG
Co. WELD
State CO

Company **OCCIDENTAL PETROLEUM CORP.**
Well **MEGAN STATE H15-32D**
Field **WATTENBURG**
County **WELD** State **CO**

Location: API #: 05-123-34854 Other Services
1937' FSL & 646' FEL
SEC 16 TWP 3N RGE 65W
Permanent Datum GL Elevation 4819'
Log Measured From KB 14' Above Perm. Datum
Drilling Measured From KB
Elevation
K.B. 4833'
D.F. 4832'
G.L. 4819'

Date of Service 20-JULY-2023
Run Number ONE
Depth Driller or PBTID 7905'
Depth Logger 800'
Bottom Log Interval 800'
Top Log Interval SURFACE
Open Hole Size 7-7/8"
Type Fluid H2O
Fluid Level SURFACE
Fluid Density 8.33 LB/GAL
Max. Recorded Temperature N/A
Max. Wellhead Pressure ZERO
Wellhead Connection 7-1/16" 5K
Estimated Cement Top SEE LOG
Unit Number 1016
Wireline Size 1/4"
Location BRIGHTON
Recorded By J. ELSENPEETER
Witnessed By F. GONZALEZ

Surface Casing	8-5/8"	24#	SURFACE	966'
Production Casing	4-1/2"	11.6#	SURFACE	7889'
Liner Casing				
Tubing Record				

<<< Fold Here >>>

All interpretations are opinions based on inferences from electrical or other measurements and Ranger Energy Services cannot and does not guarantee the accuracy or correctness of any interpretation, and Ranger Energy Services will not be liable or responsible for any loss, costs, damages, or expenses incurred or sustained by anyone resulting from any interpretation made by any of our officers, agents or employees.

Comments
N/A DENOTES NOT AVAILABLE OR NON-APPLICABLE.

THANK YOU FOR USING RANGER ENERGY SERVICES! FIELD TICKET #

Your Ranger Energy Services Crew	Tool Data - Services	Serial Number
Engineer: Operator: Operator: Operator:		

Quantity	Offset (ft)	Substrate	Description	Length (ft)	O.D. (in)	Weight (lb)
----------	-------------	-----------	-------------	-------------	-----------	-------------

Sensor	Offset (ft)	Schematic	Description	Length (ft)	O.D. (in)	Weight (lb)
			Cable_Head-1_7/16 Titan 1 7/16" Cable Head	1.02	1.44	3.31
WVFSYNC WVFCAL	13.27 13.27					
TEMP	12.15					
WVFS8 WVFS7 WVFS6 WVFS5 WVFS4 WVFS3 WVFS2 WVFS1	10.85 10.85 10.85 10.85 10.85 10.85 10.85 10.85		SCBLTEKSECT-275 Temp JS (275001) TekCo 2 3/4" 400 Deg. F Sector Tool with Temperature (JS)	9.13	2.75	130.00
WVF3FT WVF5FT	10.10 9.10					
WVFTEMP	5.77					
CCL	4.62		CCL-275tekco (111) Tekco 2 3/4" 450 Deg. F Rare Earth Magnets	1.83	2.75	33.00
GR	1.31		GR-Tek-Co 2 3/4 (0111) Tekco 2 3/4" 400 Deg. F Logging Gamma Ray	3.67	2.75	40.00
			Bull_Plug-1_7/16_GO Titan 1 7/16" Female Bull Plug	0.27	1.44	1.00

Dataset: oxy_megan state h15-32d_05-123-34854_7-20-23_scbl.db: field/well/run2/pass7
 Total length: 15.91 ft
 Total weight: 207.31 lb
 O.D.: 2.75 in

Log Variables

DatabaseC:\ProgramData\Warrior\Data\oxy_megan state h15-32d_05-123-34854_7-20-23_scbl.db
 Dataset field/well/run2/pass7/_vars_

Top - Bottom

BHTEMP_Src TEMP	BOREID in 8.75	BOTTEMP degF 100	CASEOD in 4.5	CASETHCK in 0.408	CASEWGHT lb/ft 11.6	MAXAMPL mV 81.2	MINAMPL mV 0.7
MINATTN db/ft 0.8	PERFS No	PPT usec 262	SRFTEMP degF 90	TDEPTH ft 0			

Variable Description

BHTEMP_Src : BHTEMP Input Source Selector
 BOREID : Borehole I.D.
 BOTTEMP : Bottom Hole Temperature
 CASEOD : Casing O.D.
 CASETHCK : Casing Thickness
 CASEWGHT : Casing Weight
 MAXAMPL : Maximum Amplitude

MINAMPL : Minimum Amplitude
 MINATTN : Minimum Attenuation
 PERFS : Perforation Flag
 PPT : Predicted Pipe Time
 SRFTEMP : Surface Temperature
 TDEPTH : Total Depth

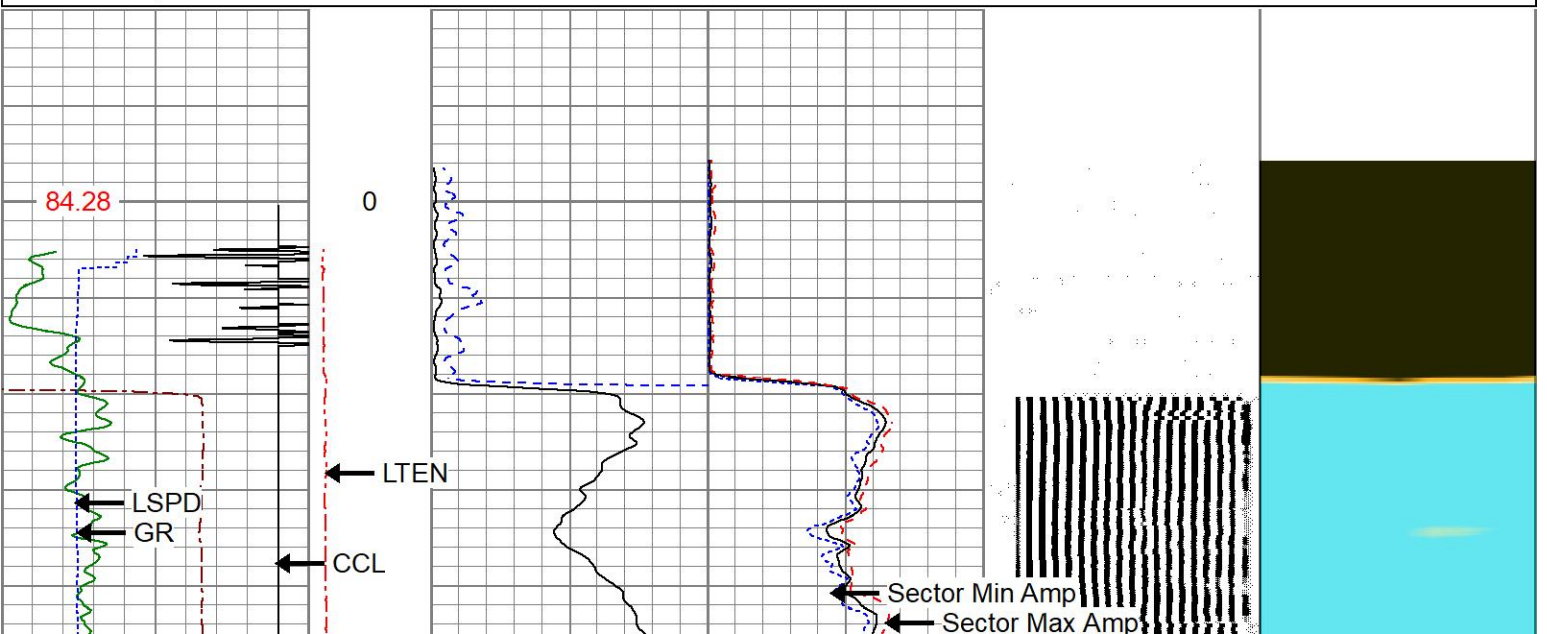


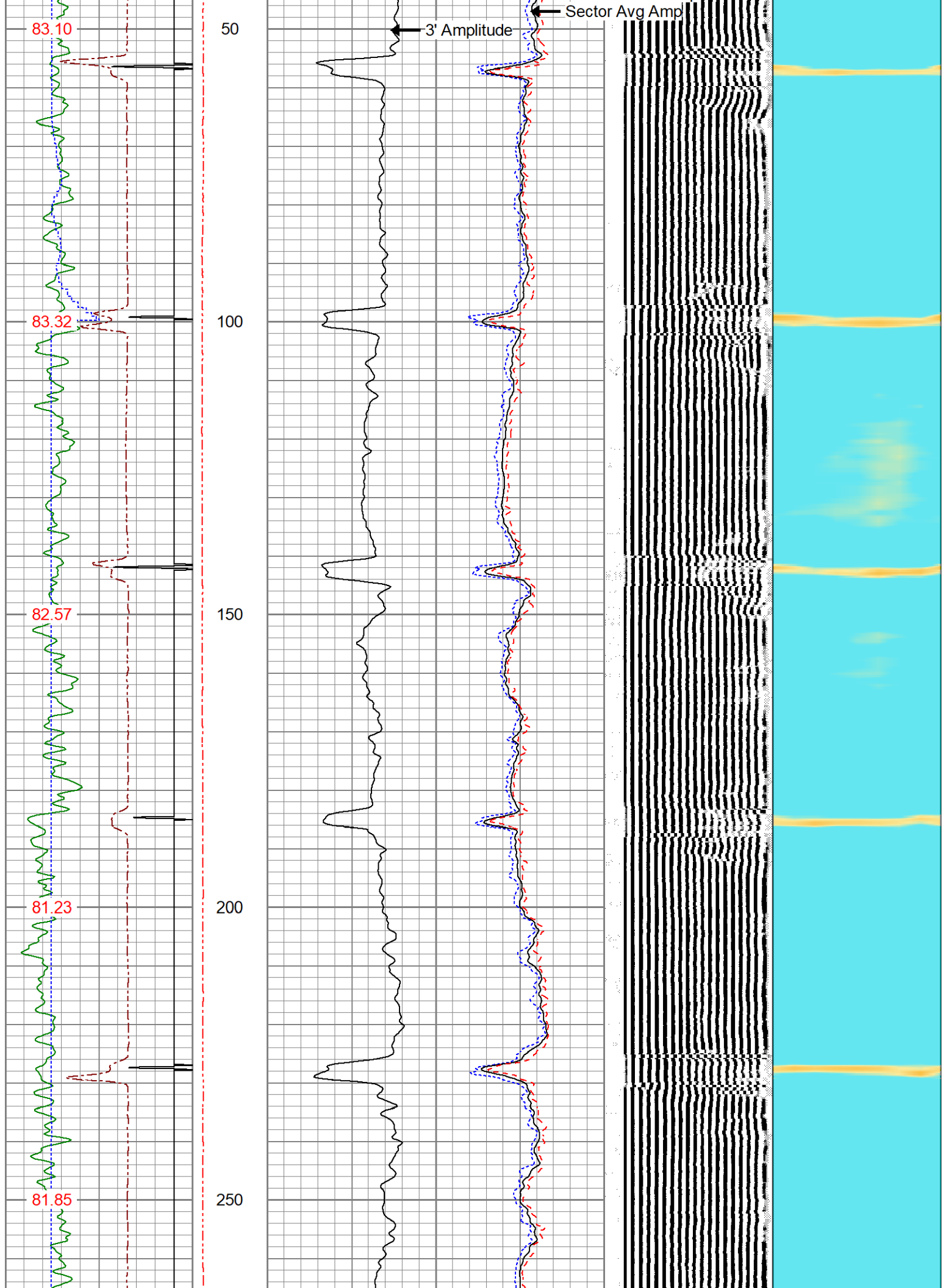
MAIN PASS

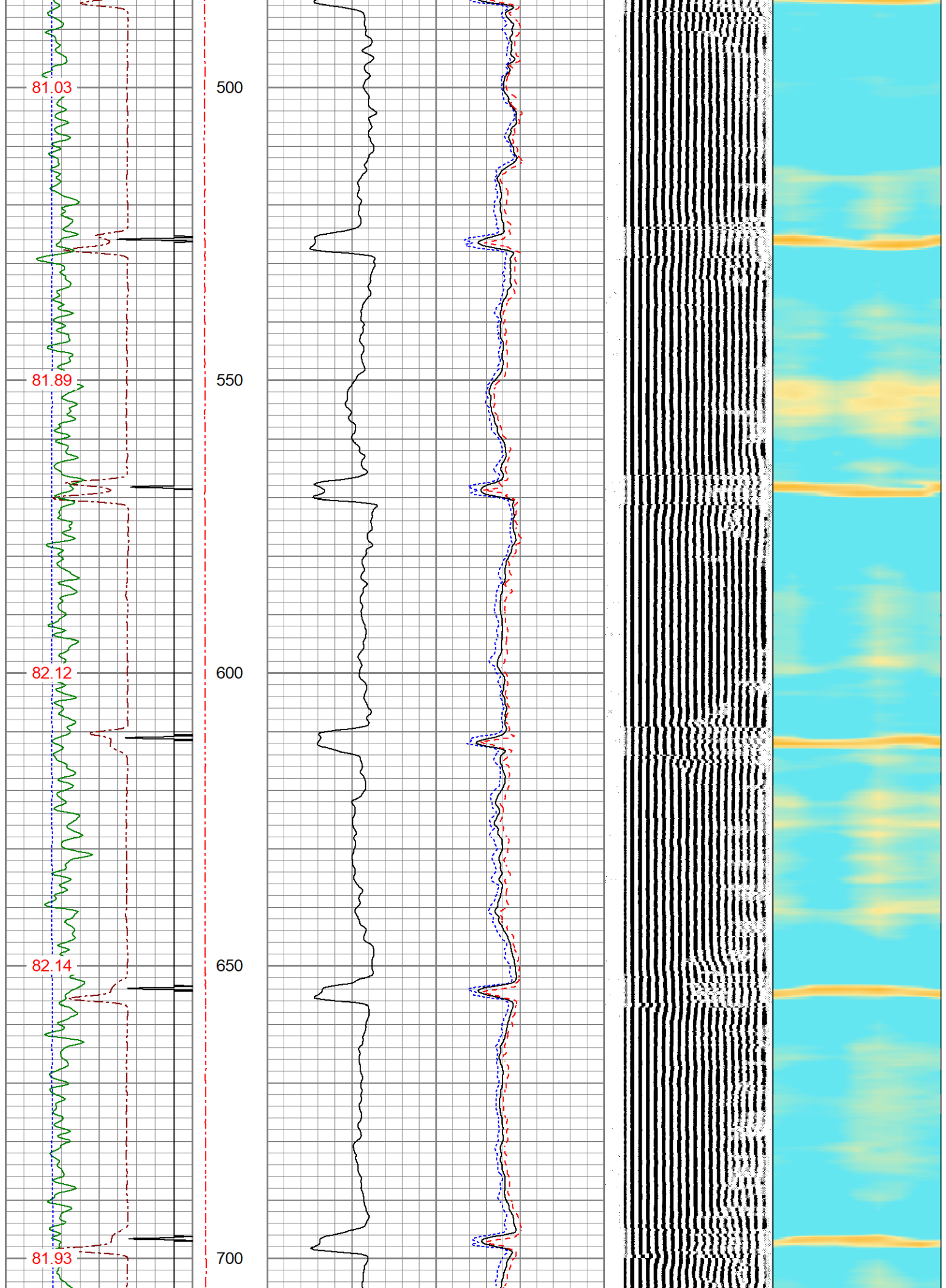
0 PSI APPLIED AT SURFACE

Database File oxy_megan state h15-32d_05-123-34854_7-20-23_scbl.db
 Dataset Pathname run2/pass7
 Presentation Format res_scbl 8sec
 Dataset Creation Thu Jul 20 14:28:08 2023
 Charted by Depth in Feet scaled 1:240

270 3FT TT (usec) 170	LTEN	3' Amplitude	0 Sector Min Amp150	200 VDL (usec) 1200	1 Sector Map	8
-9 CCL 1	(lb)	(mV) 100	Sector Avg Amp			
0 GR 150	0 2000	3' Amplified Amplitude X 5	0 150			
-150 LSPD (ft/min) 150		(mV) 20	Sector Max Amp			
TEMP (degF)			0 150			







Gamma Ray Calibration Report

Serial Number: 0111
 Tool Model: Tek-Co 2 3/4
 Performed: Thu Oct 13 08:15:27 2022

Calibrator Value: 1.0

Background Reading: 0.0 cps
 Calibrator Reading: 1.0 cps

Sensitivity: 0.6700 /cps

Segmented Cement Bond Log Calibration Report

Serial Number: 275001
 Tool Model: 275 Temp JS

Calibration Casing Diameter: 4.500 in
 Calibration Depth: 79.283 ft

Master Calibration, performed (Derived):

	Raw (v)		Calibrated (mv)		Results	
	Zero	Cal	Zero	Cal	Gain	Offset
3'	0.000	1.183	0.600	81.196	68.149	0.595
CAL	-0.007	0.996				
5'	0.000	1.882	0.600	81.196	42.820	0.595
SUM						
S1	0.000	1.347	0.000	100.000	74.269	-0.006
S2	0.000	1.353	0.000	100.000	73.927	-0.005
S3	0.000	1.211	0.000	100.000	82.597	-0.005
S4	0.000	1.153	0.000	100.000	86.717	-0.005
S5	0.000	1.161	0.000	100.000	86.145	-0.005
S6	0.000	1.215	0.000	100.000	82.292	-0.005
S7	0.000	1.305	0.000	100.000	76.640	-0.005
S8	0.000	1.268	0.000	100.000	78.891	-0.006

Internal Reference Calibration, performed (Not Performed):

	Raw (v)		Calibrated (v)		Results	
	Zero	Cal	Zero	Cal	Gain	Offset
CAL	0.000	0.000	-0.007	0.996	1.000	0.000

Air Zero Calibration, performed Mon Sep 19 09:55:20 2022:

	Raw (v)		Calibrated (v)		Results	
	Zero		Zero		Offset	
3'	0.000		0.000			0.000
5'	0.000		0.000			0.000
SUM						
S1	0.000		0.000			0.000
S2	0.000		0.000			0.000
S3	0.000		0.000			0.000
S4	0.000		0.000			0.000
S5	0.000		0.000			0.000
S6	0.000		0.000			0.000
S7	0.000		0.000			0.000
S8	0.000		0.000			0.000

Temperature Calibration Report

Serial Number: 275001
Tool Model: 275 Temp JS
Performed: Thu Oct 13 08:15:31 2022

	Reference	Reading
Low Reference:	0.00 degF	0.00 usec
High Reference:	1.00 degF	1.00 usec
Gain:	0.33	
Offset:	0.00	
Delta Spacing	1	



Company	OCCIDENTAL PETROLEUM CORP.
Well	MEGAN STATE H15-32D
Field	WATTENBURG
County	WELD
State	CO