

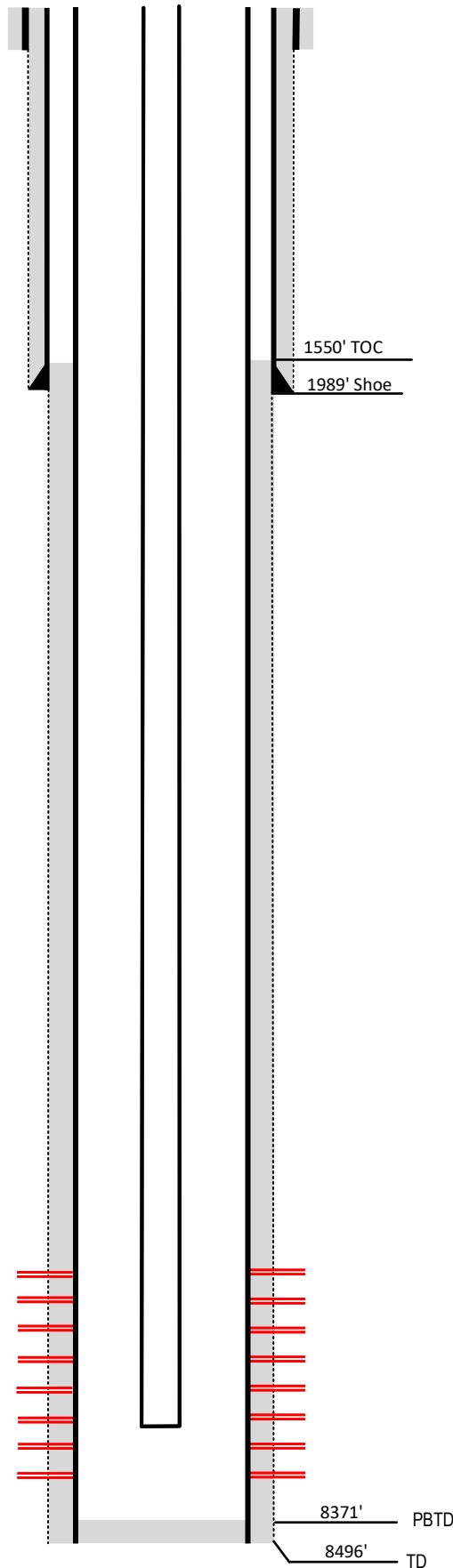
# Laramie Energy

Current Wellbore Diagram

Not to scale

FEDERAL WELL: YES  NO

Geological Tops      Depth (MD)



**Well Name**                      McDaniel # 2-16B  
**API**                                      05-077-09405-00  
**Surface Location**                      NESE Sec 2 T9S R94W  
**GPS Coordinates**                      39.304250, -107.842880  
**County, State**                          Mesa County, Co  
**Diagram Date**                              12/5/2023

Hole	24" @ 40'
Conductor	16" @ 40'
Cement	Surface

<b>Surface Hole</b>	12.25" @ 2014'
Casing	8 5/8" 32# J-55 @ 2014'
Cement	515 sks
TOC	Surface

<b>Production Hole</b>	7.875" @ 8496'
Casing	4 1/2 11.6# I-80 @ 8496'
Cement	1400 sks
TOC	1550'

<b>Tubing</b>	2 3/8" 4.7# L80 @ 7850'
---------------	-------------------------

Perforations	Top	Bottom
	6896'	8128'

Williams Fork      6886'

Cameo      7578'

Rollins      8340'

8371'      PBD

8496'      TD