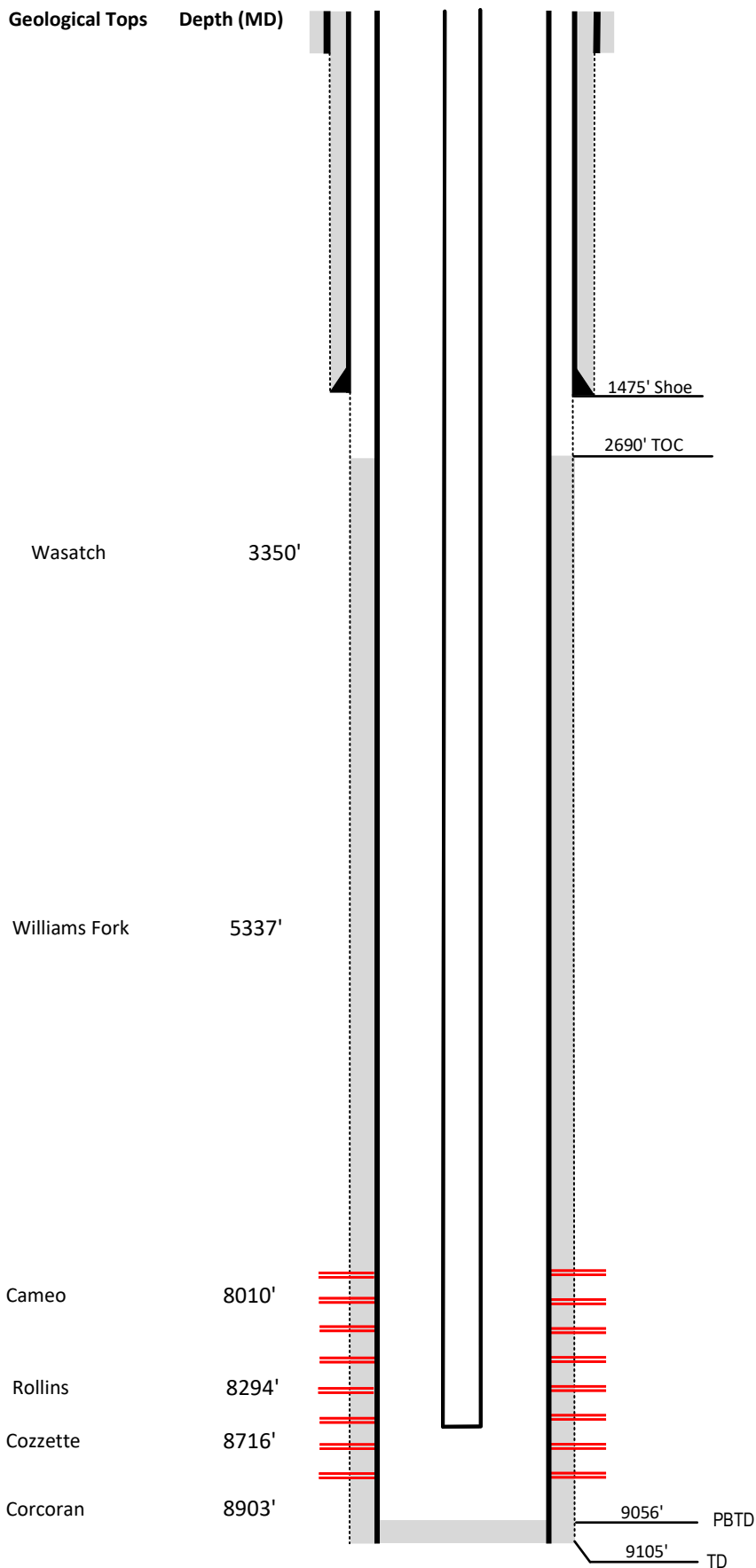


Laramie Energy

Current Wellbore Diagram

Not to scale

FEDERAL WELL: YES NO



Well Name	McDaniel # 2-16
API	05-077-08903-00
Surface Location	NESE Sec 2 T9S R94W
GPS Coordinates	39.304822, -107.842927
County, State	Mesa County, Co
Diagram Date	12/5/2023

Hole	24" @ 40'
Conductor	16" @ 40'
Cement	Surface

Surface Hole	12.25" @ 1505'
Casing	8 5/8" 32# J-55 @ 1505'
Cement	420 sks
TOC	Surface

Production Hole	7.875" @ 9104'
Casing	4 1/2" 11.6# I-80 @ 9104'
Cement	1800 sks
TOC	2690'

Tubing	2 3/8" 4.7# L80 @ 8432'
---------------	-------------------------

Perforations	Top	Bottom
	6914'	8969'