

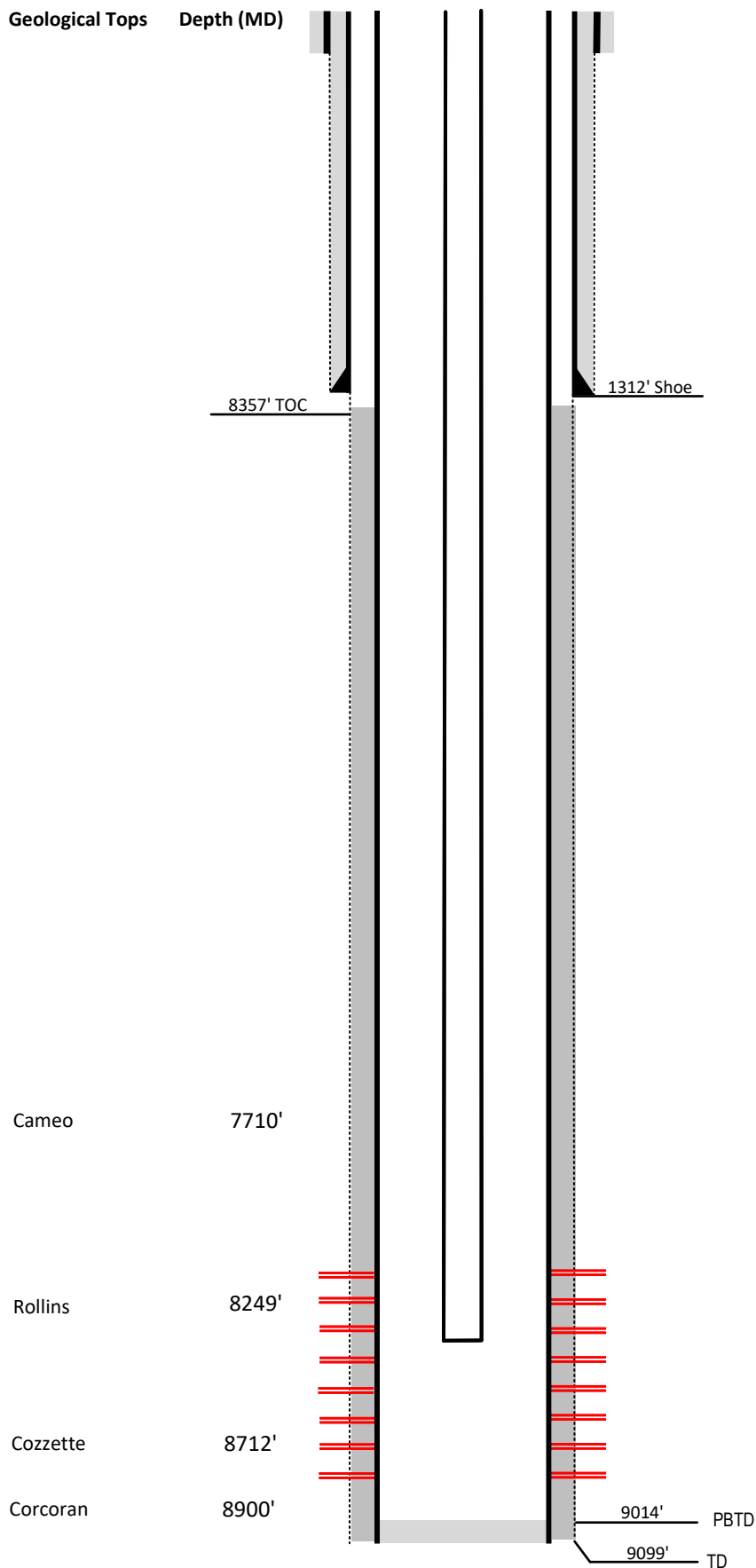
Laramie Energy

Current Wellbore Diagram

Not to scale

FEDERAL WELL: YES NO

Geological Tops Depth (MD)



Well Name McDaniel #2-2
API 05-077-08937-00
Surface Location NENE Sec 2 T9S R 94W
GPS Coordinates 39.310682, -107.843367
County, State Mesa County, CO
Diagram Date 10/18/2023

Hole	26"
Conductor	16" .250 wall @ 40'
Cement	Surface

Surface Hole	12.25" @ 1340'
Casing	8 5/8" 32# J-55 @ 1340'
Cement	420 sks
TOC	Surface

Production Hole	7.875" @ 9060'
Casing	4 1/2" 11.6# I-80 @ 9060'
Cement	1370 sks
TOC	1320'

Tubing	2 3/8" J-55 @ 8357'
---------------	---------------------

Perforations	Top	Bottom
	6598'	8954'