

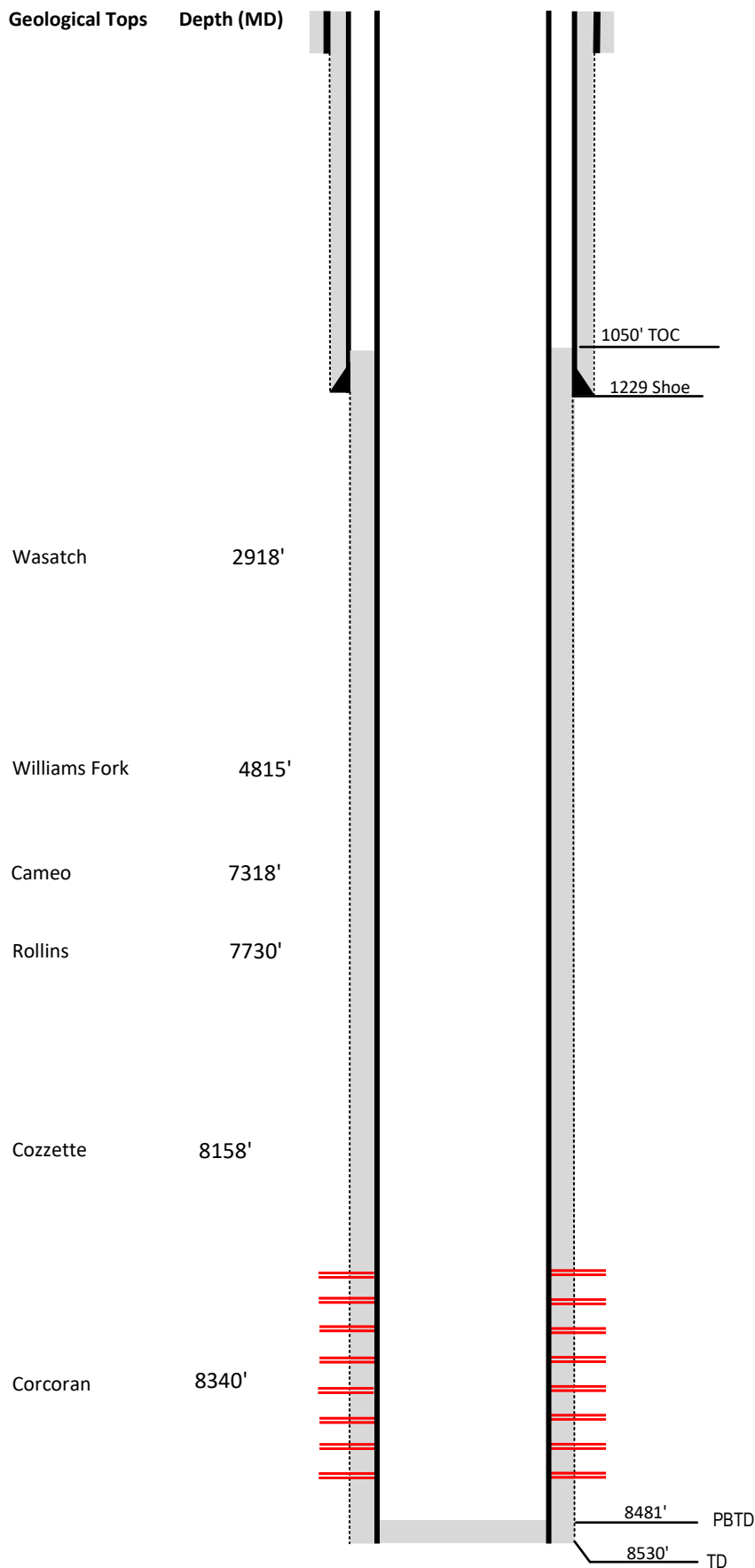
Laramie Energy

Current Wellbore Diagram

Not to scale

FEDERAL WELL: YES NO

Geological Tops Depth (MD)



Well Name Gunderson #12-14A
API 05-077-09081-00
Surface Location SESW Sec 12 T9S R94W
GPS Coordinates 39.287030, -107.834370
County, State Mesa County, CO
Diagram Date 9/18/2023

Hole	26"
Conductor	16" @ 40'
Cement	Surface

Surface Hole	12.25 @ 1252'
Casing	8 5/8 32# J-55 @ 1252'
Cement	420 sks
TOC	Surface

Production Hole	7 .875 @ 8528'
Casing	4 1/2 11.6# I-80 @ 8528'
Cement	1414 sks
TOC	1050'

Tubing	2.375 J-55 @ 7839'
---------------	--------------------

Perforations	Top	Bottom
	6073'	8427'