

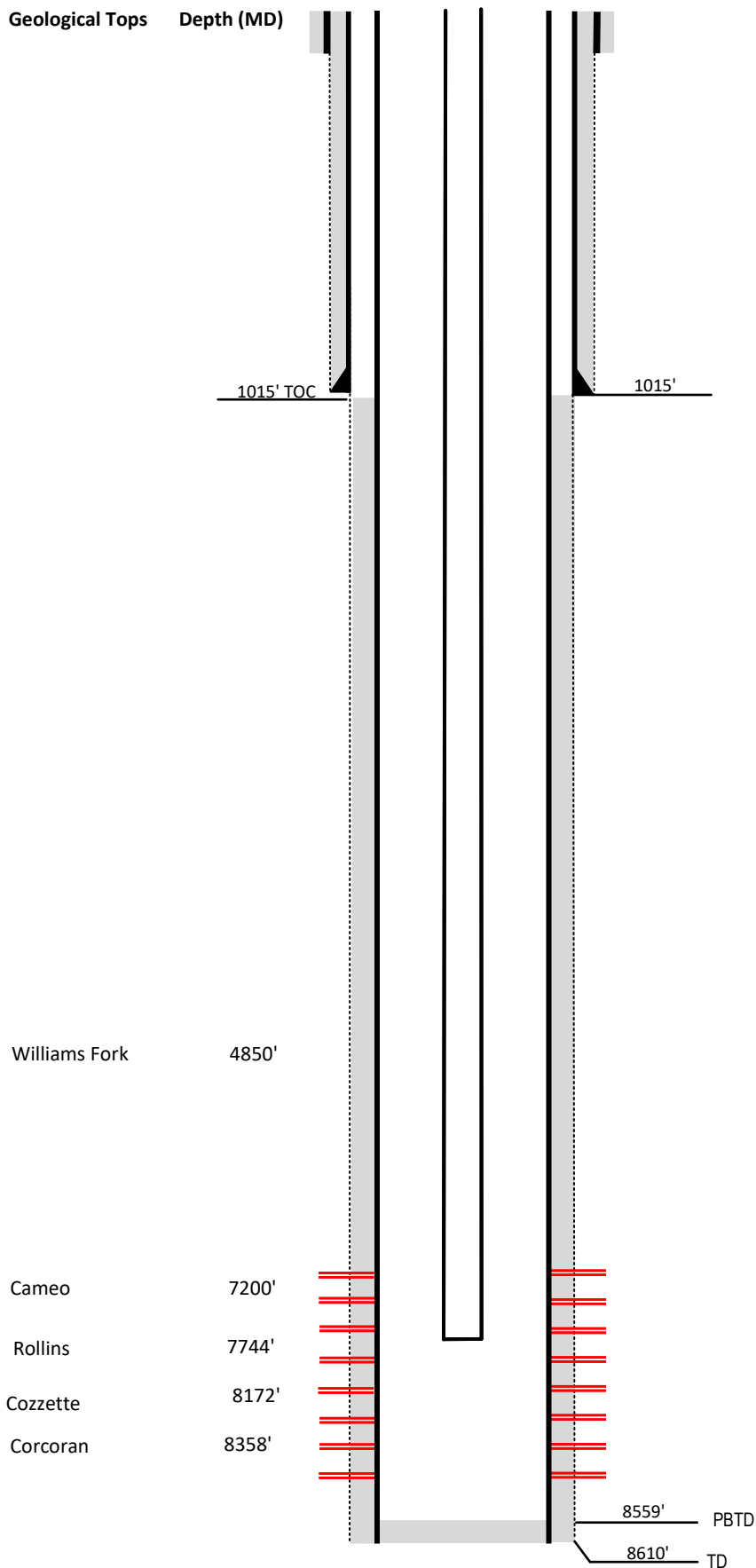
Laramie Energy

Current Wellbore Diagram

Not to scale

FEDERAL WELL: YES NO

Geological Tops Depth (MD)



Well Name	Griffith #11-2
API	05-077-08834-00
Surface Location	NWNE Sec 11 T9S R94W
GPS Coordinates	39.295662, -107.844127
County, State	Mesa County, CO
Diagram Date	9/18/2023

Hole	26"
Conductor	16" @ 60'
Cement	Surface

Surface Hole	12.25 @ 1015'
Casing	8 5/8 32# J-55 @ 1015'
Cement	425 sks
TOC	Surface

Production Hole	7.875 @ 8605'
Casing	4 1/2 11.6# I-80 @ 8605'
Cement	1350 sks
TOC	1015'

Tubing	2.375 4.7# L-80 @ 7970'
---------------	-------------------------

Perforations	Top	Bottom
	6453'	8453'