

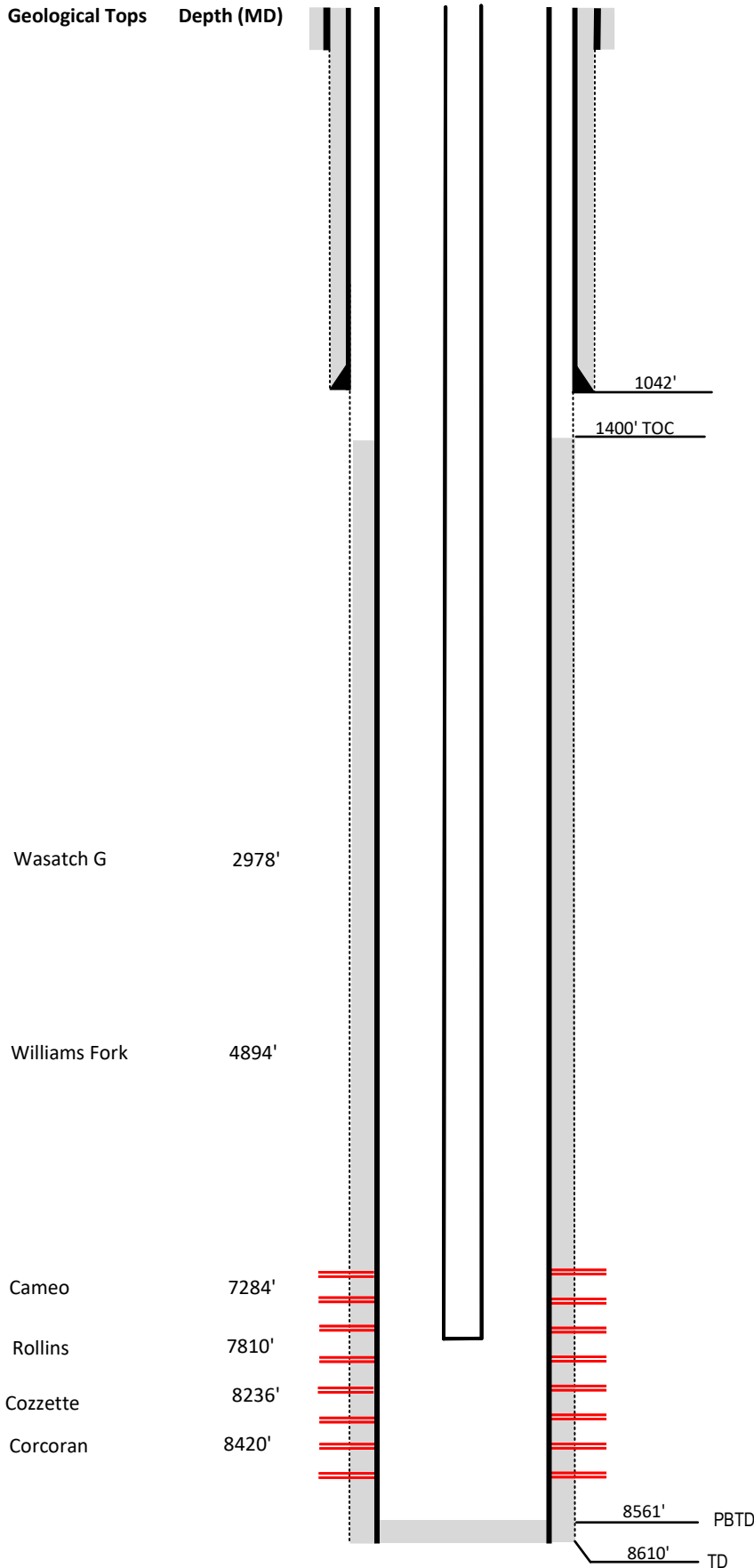
Laramie Energy

Current Wellbore Diagram

Not to scale

FEDERAL WELL: YES NO

Geological Tops Depth (MD)



Well Name Griffith #11-1
API 05-077-08833-00
Surface Location NWNE Sec 11 T9S R94W
GPS Coordinates 39.295220, -107.844117
County, State Mesa County, CO
Diagram Date 9/18/2023

Hole	26"
Conductor	16" @ 60'
Cement	Surface

Surface Hole	12.25 @ 1042'
Casing	8 5/8 32# J-55 @ 1042'
Cement	360 sks
TOC	Surface

Production Hole	7.875 @ 8645'
Casing	4 1/2 11.6# I-80 @ 8645'
Cement	1500 sks
TOC	1400'

Tubing	2.375 4.7# L-80 @ 8088'
---------------	-------------------------

Perforations	Top	Bottom
	6770'	8521'