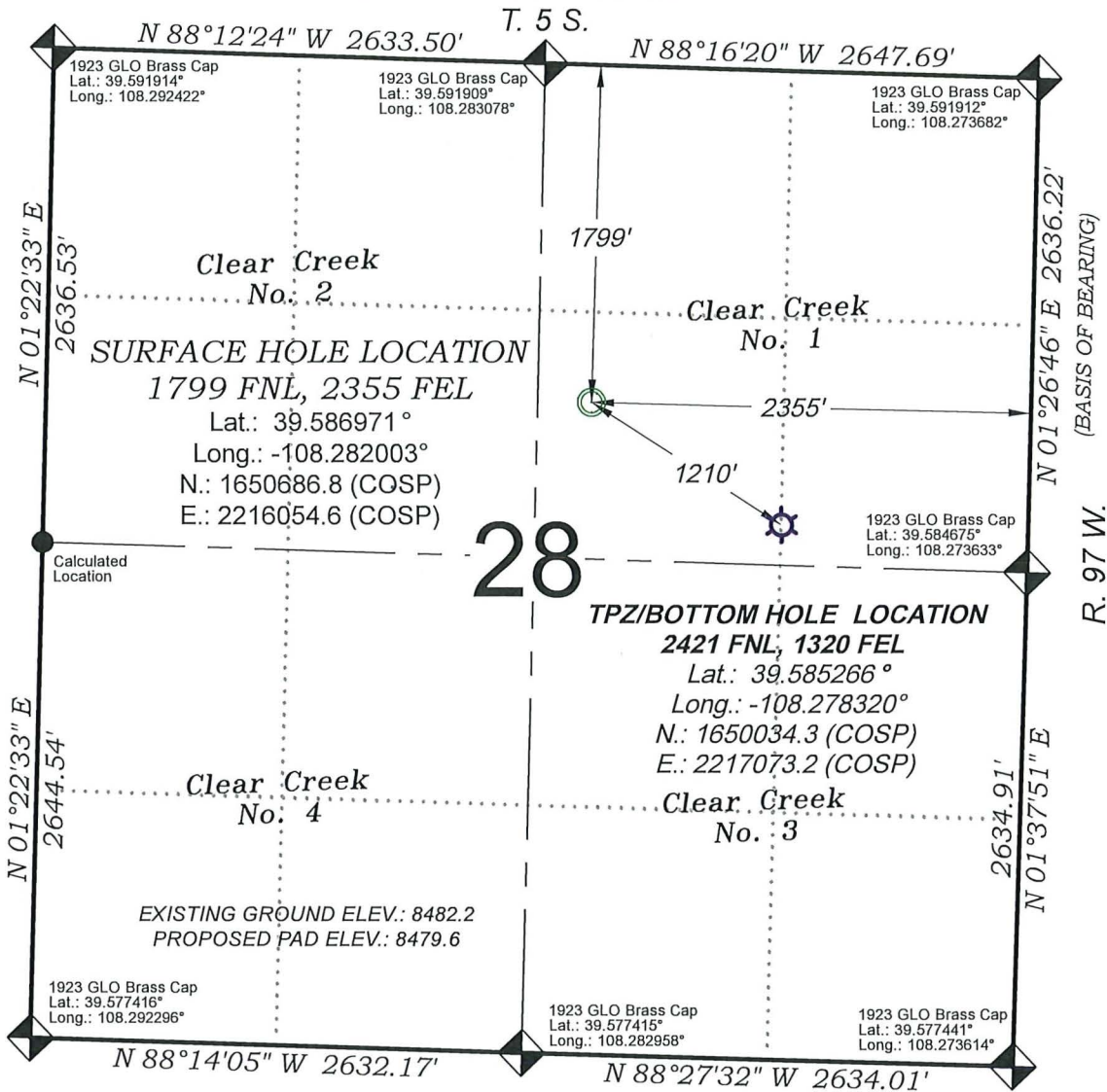


Chevron TR 532-28-597



SEE CONSTRUCTION LAYOUT
 PLAT FOR VISIBLE IMPROVEMENTS
 WITHIN 2000' OF THIS LOCATION



- LEGEND -

- FIELD LOCATED SECTION MONUMENTS AS DESCRIBED
- FIELD SURVEYED WELL LOCATION
- CALCULATED BOTTOM HOLE LOCATION
- CALCULATED SECTION CORNER LOCATION

SURVEYORS STATEMENT

I, MICHAEL J. LANGHORNE, A REGISTERED LAND SURVEYOR IN THE STATE OF COLORADO DO HEREBY CERTIFY THAT THE SURVEY SHOWN HEREON WAS PREPARED UNDER MY DIRECT SUPERVISION AND HAS BEEN STAKED ON THE GROUND AS SHOWN ON THE PLAT AND CHECKING THAT THIS MAP IS A TRUE REPRESENTATION THEREOF.

Michael J. Langhorne

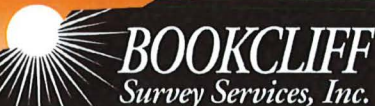
MICHAEL J. LANGHORNE, COLORADO REGISTRATION NO. 36572
 FOR AND ON BEHALF OF
 BOOKCLIFF SURVEY SERVICES, INC.

REFERENCES

- 1) INDEPENDENT RE-SURVEY T. 5 S., R. 97 W., 6th P.M (GLO PLAT)
- 2) U.S.G.S. QUAD: Circle Dot Gulch, CO

Revised: 3/31/23

136 East Third Street
 Rifle, Colorado
 81650 Ph. (970)
 625-2720 Fax (970)
 625-2773



SURVEY DATE:	9/12/14
MAP DATE:	3/20/23
SCALE:	1" = 1000'
PLAT:	1 of 1
PROJECT:	TEP Valley

WELL LOCATION PLAT Prepared for:

TERRA ENERGY PARTNER
 TEP Rocky Mountain LLC

SW1/4 NE1/4, SECTION 28
 T. 5 S., R. 97 W. of the 6th. P.M.
 GARFIELD COUNTY, COLORADO