

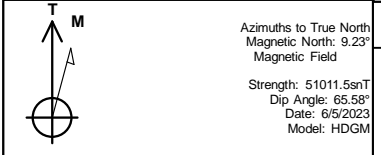


REFERENCE INFORMATION

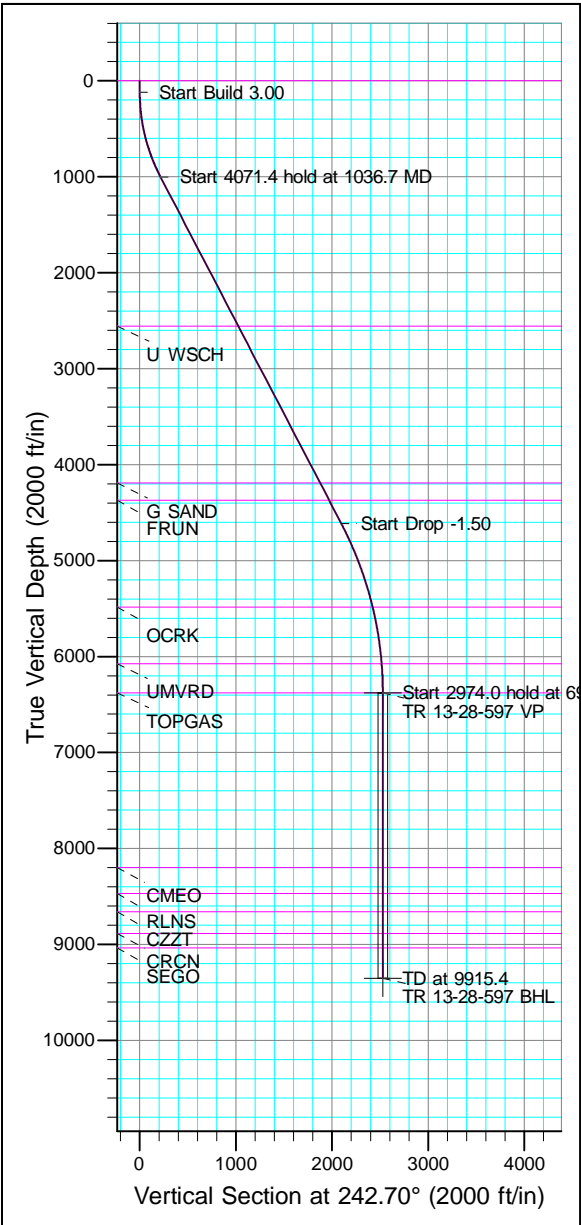
Co-ordinate (N/E) Reference: Well TR 13-28-597 - Slot TR 13-28-597, True North  
 Vertical (TVD) Reference: RKB @ 8513.0ft  
 Section (VS) Reference: Slot - TR 13-28-597(0.0N, 0.0E)  
 Measured Depth Reference: RKB @ 8513.0ft  
 Calculation Method: Minimum Curvature



Project: Garfield County, CO (Nad 83)  
 Site: TR 32-28-597 Pad  
 Well: TR 13-28-597  
 Wellbore: OWB  
 Design: Plan



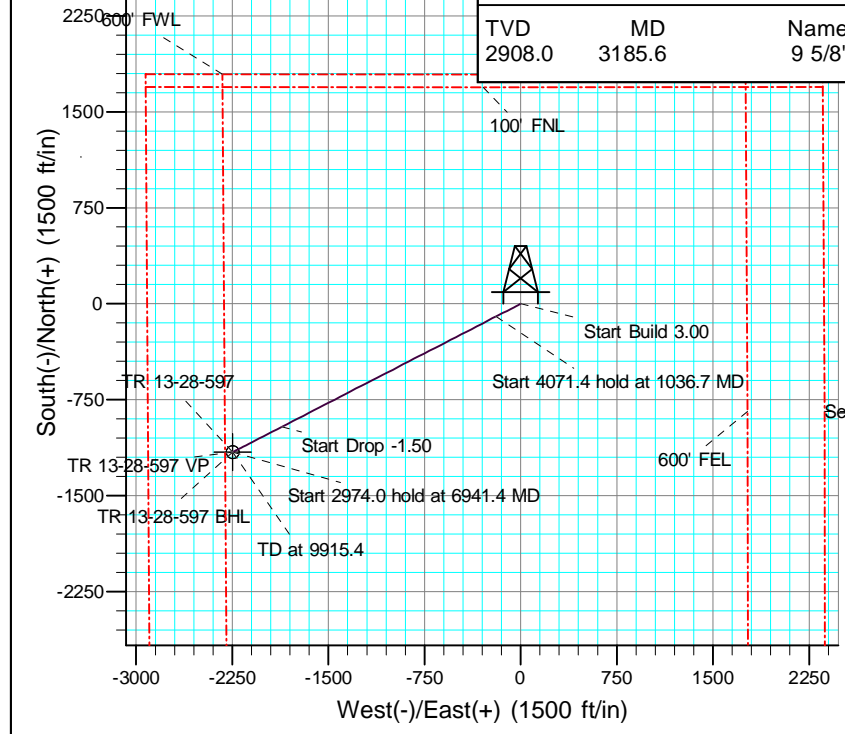
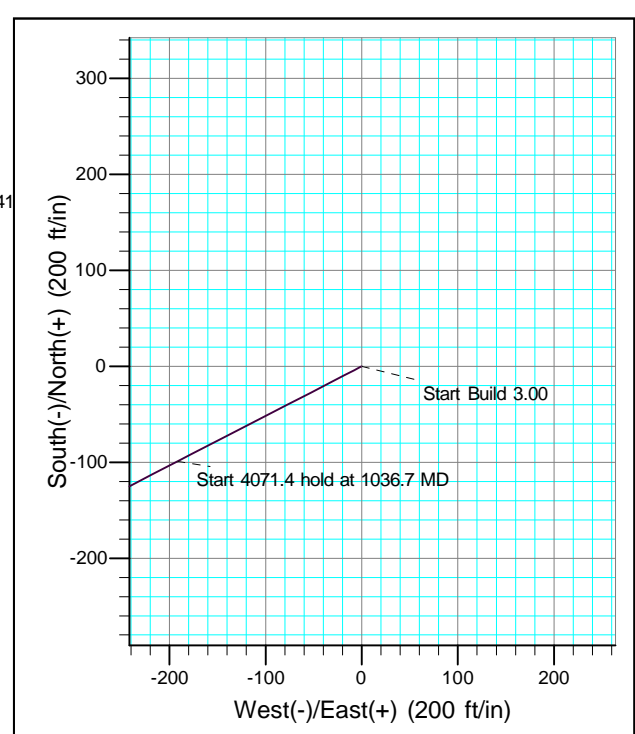
Azimuths to True North		WELL DETAILS: TR 13-28-597						
Magnetic North:	9.23°							
Magnetic Field								
Strength:	51011.5mT							
Dip Angle:	65.58°							
Date:	6/5/2023							
Model:	HDGM							
+N/-S	+E/-W	Northing	Easting	Latitude	Longitude	Slot		
0.0	0.0	1650693.600	2216044.100	39.586988	-108.282041	TR 13-28-597		
		Ground Level:		8483.0				



ANNOTATIONS										FORMATION TOP DETAILS		
TVD	MD	Inc	Azi	+N/-S	+E/-W	V Sect	Departure	Annotation	TVDPath	MDPath	Formation	
120.0	120.0	0.00	0.00	0.0	0.0	0.0	0.0	Start Build 3.00	0.0	0.0	GRRV	
1001.9	1036.7	27.50	242.70	-99.0	-191.8	215.8	215.8	Start 4071.4 hold at 1036.7 MD	2558.0	2791.0	U WSCH	
4613.2	5108.0	27.50	242.70	-961.1	-1862.4	2095.8	2095.8	Start Drop -1.50	4192.0	4633.2	G SAND	
6377.0	6941.4	0.00	0.00	-1159.0	-2246.0	2527.4	2527.4	Start 2974.0 hold at 6941.4 MD	4371.0	4835.0	FRUN	
9351.0	9915.4	0.00	0.00	-1159.0	-2246.0	2527.4	2527.4	TD at 9915.4	5484.0	6040.1	OCRK	
									6074.0	6638.1	UMVRD	
									6377.0	6941.4	TOPGAS	
									8200.0	8764.4	CMEO	
									8470.0	9034.4	RLNS	
									8657.0	9221.4	CZZT	
									8885.0	9449.4	CRCN	
									9035.0	9599.4	SEGO	

DESIGN TARGET DETAILS									
Name	TVD	+N/-S	+E/-W	Northing	Easting	Latitude	Longitude	Shape	
VP	6377.0	-1159.0	-2246.0	1649603.900	2213763.700	39.583806	-108.290010	Point	- plan hits target center
BHL	9351.0	-1159.0	-2246.0	1649603.900	2213763.700	39.583806	-108.290010	Circle (Radius: 50.0)	- plan hits target center

CASING DETAILS		
TVD	MD	Name
2908.0	3185.6	9 5/8"





# **Terra Energy Partners, LLP**

**Garfield County, CO (Nad 83)**

**TR 32-28-597 Pad**

**TR 13-28-597 - Slot TR 13-28-597**

**OWB**

**Plan: Plan**

## **Standard Planning Report**

**13 June, 2023**



<b>Database:</b>	NN	<b>Local Co-ordinate Reference:</b>	Well TR 13-28-597 - Slot TR 13-28-597
<b>Company:</b>	Terra Energy Partners, LLP	<b>TVD Reference:</b>	RKB @ 8513.0ft
<b>Project:</b>	Garfield County, CO (Nad 83)	<b>MD Reference:</b>	RKB @ 8513.0ft
<b>Site:</b>	TR 32-28-597 Pad	<b>North Reference:</b>	True
<b>Well:</b>	TR 13-28-597	<b>Survey Calculation Method:</b>	Minimum Curvature
<b>Wellbore:</b>	OWB		
<b>Design:</b>	Plan		

<b>Project</b>	Garfield County, CO (Nad 83)		
<b>Map System:</b>	US State Plane 1983	<b>System Datum:</b>	Mean Sea Level
<b>Geo Datum:</b>	North American Datum 1983		
<b>Map Zone:</b>	Colorado Central Zone		

<b>Site</b>	TR 32-28-597 Pad, Sec 28, T5S, R97W				
<b>Site Position:</b>	<b>Northing:</b>	1,650,709.300 usft	<b>Latitude:</b>	39.587032	
<b>From:</b> Map	<b>Easting:</b>	2,216,053.200 usft	<b>Longitude:</b>	-108.282011	
<b>Position Uncertainty:</b>	0.0 ft	<b>Slot Radius:</b>	13-3/16 "	<b>Grid Convergence:</b>	-1.75 °

<b>Well</b>	TR 13-28-597 - Slot TR 13-28-597					
<b>Well Position</b>	<b>+N/-S</b>	-16.0 ft	<b>Northing:</b>	1,650,693.600 usft	<b>Latitude:</b>	39.586988
	<b>+E/-W</b>	-8.6 ft	<b>Easting:</b>	2,216,044.100 usft	<b>Longitude:</b>	-108.282042
<b>Position Uncertainty</b>		0.0 ft	<b>Wellhead Elevation:</b>	8,513.0 ft	<b>Ground Level:</b>	8,483.0 ft

<b>Wellbore</b>	OWB				
<b>Magnetics</b>	<b>Model Name</b>	<b>Sample Date</b>	<b>Declination (°)</b>	<b>Dip Angle (°)</b>	<b>Field Strength (nT)</b>
	HDGM	6/5/2023	9.23	65.58	51,012

<b>Design</b>	Plan			
<b>Audit Notes:</b>				
<b>Version:</b>	<b>Phase:</b>	PROTOTYPE	<b>Tie On Depth:</b>	0.0
<b>Vertical Section:</b>	<b>Depth From (TVD) (ft)</b>	<b>+N/-S (ft)</b>	<b>+E/-W (ft)</b>	<b>Direction (°)</b>
	0.0	0.0	0.0	242.70

<b>Plan Sections</b>										
Measured Depth (ft)	Inclination (°)	Azimuth (°)	Vertical Depth (ft)	+N/-S (ft)	+E/-W (ft)	Dogleg Rate (°/100usft)	Build Rate (°/100usft)	Turn Rate (°/100usft)	TFO (°)	Target
0.0	0.00	0.00	0.0	0.0	0.0	0.00	0.00	0.00	0.00	
120.0	0.00	0.00	120.0	0.0	0.0	0.00	0.00	0.00	0.00	
1,036.7	27.50	242.70	1,001.9	-99.0	-191.8	3.00	3.00	0.00	242.70	
5,108.0	27.50	242.70	4,613.2	-961.1	-1,862.4	0.00	0.00	0.00	0.00	
6,941.4	0.00	0.00	6,377.0	-1,159.0	-2,246.0	1.50	-1.50	0.00	180.00	
9,915.4	0.00	0.00	9,351.0	-1,159.0	-2,246.0	0.00	0.00	0.00	0.00	TR 13-28-597 BHL

<b>Database:</b>	NN	<b>Local Co-ordinate Reference:</b>	Well TR 13-28-597 - Slot TR 13-28-597
<b>Company:</b>	Terra Energy Partners, LLP	<b>TVD Reference:</b>	RKB @ 8513.0ft
<b>Project:</b>	Garfield County, CO (Nad 83)	<b>MD Reference:</b>	RKB @ 8513.0ft
<b>Site:</b>	TR 32-28-597 Pad	<b>North Reference:</b>	True
<b>Well:</b>	TR 13-28-597	<b>Survey Calculation Method:</b>	Minimum Curvature
<b>Wellbore:</b>	OWB		
<b>Design:</b>	Plan		

Planned Survey										
Measured Depth (ft)	Inclination (°)	Azimuth (°)	Vertical Depth (ft)	+N/-S (ft)	+E/-W (ft)	Vertical Section (ft)	Dogleg Rate (°/100usft)	Build Rate (°/100usft)	Turn Rate (°/100usft)	
0.0	0.00	0.00	0.0	0.0	0.0	0.0	0.00	0.00	0.00	
100.0	0.00	0.00	100.0	0.0	0.0	0.0	0.00	0.00	0.00	
120.0	0.00	0.00	120.0	0.0	0.0	0.0	0.00	0.00	0.00	
<b>Start Build 3.00</b>										
200.0	2.40	242.70	200.0	-0.8	-1.5	1.7	3.00	3.00	0.00	
300.0	5.40	242.70	299.7	-3.9	-7.5	8.5	3.00	3.00	0.00	
400.0	8.40	242.70	399.0	-9.4	-18.2	20.5	3.00	3.00	0.00	
500.0	11.40	242.70	497.5	-17.3	-33.5	37.7	3.00	3.00	0.00	
600.0	14.40	242.70	595.0	-27.5	-53.3	60.0	3.00	3.00	0.00	
700.0	17.40	242.70	691.1	-40.1	-77.7	87.4	3.00	3.00	0.00	
800.0	20.40	242.70	785.7	-54.9	-106.4	119.8	3.00	3.00	0.00	
900.0	23.40	242.70	878.5	-72.0	-139.6	157.1	3.00	3.00	0.00	
1,000.0	26.40	242.70	969.2	-91.3	-177.0	199.2	3.00	3.00	0.00	
1,036.7	27.50	242.70	1,001.9	-99.0	-191.8	215.8	3.00	3.00	0.00	
<b>Start 4071.4 hold at 1036.7 MD</b>										
1,100.0	27.50	242.70	1,058.1	-112.4	-217.8	245.0	0.00	0.00	0.00	
1,200.0	27.50	242.70	1,146.8	-133.5	-258.8	291.2	0.00	0.00	0.00	
1,300.0	27.50	242.70	1,235.5	-154.7	-299.8	337.4	0.00	0.00	0.00	
1,400.0	27.50	242.70	1,324.2	-175.9	-340.9	383.6	0.00	0.00	0.00	
1,500.0	27.50	242.70	1,412.9	-197.1	-381.9	429.7	0.00	0.00	0.00	
1,600.0	27.50	242.70	1,501.6	-218.2	-422.9	475.9	0.00	0.00	0.00	
1,700.0	27.50	242.70	1,590.3	-239.4	-464.0	522.1	0.00	0.00	0.00	
1,800.0	27.50	242.70	1,679.0	-260.6	-505.0	568.3	0.00	0.00	0.00	
1,900.0	27.50	242.70	1,767.7	-281.8	-546.0	614.4	0.00	0.00	0.00	
2,000.0	27.50	242.70	1,856.4	-302.9	-587.1	660.6	0.00	0.00	0.00	
2,100.0	27.50	242.70	1,945.1	-324.1	-628.1	706.8	0.00	0.00	0.00	
2,200.0	27.50	242.70	2,033.8	-345.3	-669.1	753.0	0.00	0.00	0.00	
2,300.0	27.50	242.70	2,122.5	-366.5	-710.2	799.1	0.00	0.00	0.00	
2,400.0	27.50	242.70	2,211.2	-387.6	-751.2	845.3	0.00	0.00	0.00	
2,500.0	27.50	242.70	2,299.9	-408.8	-792.2	891.5	0.00	0.00	0.00	
2,600.0	27.50	242.70	2,388.6	-430.0	-833.3	937.7	0.00	0.00	0.00	
2,700.0	27.50	242.70	2,477.3	-451.2	-874.3	983.9	0.00	0.00	0.00	
2,800.0	27.50	242.70	2,566.0	-472.4	-915.3	1,030.0	0.00	0.00	0.00	
2,900.0	27.50	242.70	2,654.7	-493.5	-956.4	1,076.2	0.00	0.00	0.00	
3,000.0	27.50	242.70	2,743.4	-514.7	-997.4	1,122.4	0.00	0.00	0.00	
3,100.0	27.50	242.70	2,832.1	-535.9	-1,038.4	1,168.6	0.00	0.00	0.00	
3,200.0	27.50	242.70	2,920.8	-557.1	-1,079.5	1,214.7	0.00	0.00	0.00	
3,300.0	27.50	242.70	3,009.5	-578.2	-1,120.5	1,260.9	0.00	0.00	0.00	
3,400.0	27.50	242.70	3,098.2	-599.4	-1,161.5	1,307.1	0.00	0.00	0.00	
3,500.0	27.50	242.70	3,186.9	-620.6	-1,202.6	1,353.3	0.00	0.00	0.00	
3,600.0	27.50	242.70	3,275.6	-641.8	-1,243.6	1,399.4	0.00	0.00	0.00	
3,700.0	27.50	242.70	3,364.3	-662.9	-1,284.6	1,445.6	0.00	0.00	0.00	
3,800.0	27.50	242.70	3,453.0	-684.1	-1,325.7	1,491.8	0.00	0.00	0.00	
3,900.0	27.50	242.70	3,541.7	-705.3	-1,366.7	1,538.0	0.00	0.00	0.00	
4,000.0	27.50	242.70	3,630.4	-726.5	-1,407.7	1,584.1	0.00	0.00	0.00	
4,100.0	27.50	242.70	3,719.1	-747.6	-1,448.8	1,630.3	0.00	0.00	0.00	
4,200.0	27.50	242.70	3,807.8	-768.8	-1,489.8	1,676.5	0.00	0.00	0.00	
4,300.0	27.50	242.70	3,896.5	-790.0	-1,530.8	1,722.7	0.00	0.00	0.00	
4,400.0	27.50	242.70	3,985.2	-811.2	-1,571.9	1,768.8	0.00	0.00	0.00	
4,500.0	27.50	242.70	4,073.9	-832.3	-1,612.9	1,815.0	0.00	0.00	0.00	
4,600.0	27.50	242.70	4,162.6	-853.5	-1,654.0	1,861.2	0.00	0.00	0.00	
4,700.0	27.50	242.70	4,251.3	-874.7	-1,695.0	1,907.4	0.00	0.00	0.00	
4,800.0	27.50	242.70	4,340.0	-895.9	-1,736.0	1,953.5	0.00	0.00	0.00	
4,900.0	27.50	242.70	4,428.7	-917.0	-1,777.1	1,999.7	0.00	0.00	0.00	

<b>Database:</b>	NN	<b>Local Co-ordinate Reference:</b>	Well TR 13-28-597 - Slot TR 13-28-597
<b>Company:</b>	Terra Energy Partners, LLP	<b>TVD Reference:</b>	RKB @ 8513.0ft
<b>Project:</b>	Garfield County, CO (Nad 83)	<b>MD Reference:</b>	RKB @ 8513.0ft
<b>Site:</b>	TR 32-28-597 Pad	<b>North Reference:</b>	True
<b>Well:</b>	TR 13-28-597	<b>Survey Calculation Method:</b>	Minimum Curvature
<b>Wellbore:</b>	OWB		
<b>Design:</b>	Plan		

Planned Survey										
Measured Depth (ft)	Inclination (°)	Azimuth (°)	Vertical Depth (ft)	+N/-S (ft)	+E/-W (ft)	Vertical Section (ft)	Dogleg Rate (°/100usft)	Build Rate (°/100usft)	Turn Rate (°/100usft)	
5,000.0	27.50	242.70	4,517.4	-938.2	-1,818.1	2,045.9	0.00	0.00	0.00	
5,100.0	27.50	242.70	4,606.1	-959.4	-1,859.1	2,092.1	0.00	0.00	0.00	
5,108.0	27.50	242.70	4,613.2	-961.1	-1,862.4	2,095.8	0.00	0.00	0.00	
<b>Start Drop -1.50</b>										
5,200.0	26.12	242.70	4,695.3	-980.1	-1,899.3	2,137.3	1.50	-1.50	0.00	
5,300.0	24.62	242.70	4,785.6	-999.8	-1,937.4	2,180.1	1.50	-1.50	0.00	
5,400.0	23.12	242.70	4,877.1	-1,018.3	-1,973.3	2,220.6	1.50	-1.50	0.00	
5,500.0	21.62	242.70	4,969.5	-1,035.8	-2,007.1	2,258.6	1.50	-1.50	0.00	
5,600.0	20.12	242.70	5,063.0	-1,052.1	-2,038.8	2,294.3	1.50	-1.50	0.00	
5,700.0	18.62	242.70	5,157.3	-1,067.3	-2,068.3	2,327.4	1.50	-1.50	0.00	
5,800.0	17.12	242.70	5,252.5	-1,081.4	-2,095.5	2,358.1	1.50	-1.50	0.00	
5,900.0	15.62	242.70	5,348.4	-1,094.3	-2,120.6	2,386.3	1.50	-1.50	0.00	
6,000.0	14.12	242.70	5,445.1	-1,106.1	-2,143.4	2,412.0	1.50	-1.50	0.00	
6,100.0	12.62	242.70	5,542.4	-1,116.7	-2,163.9	2,435.1	1.50	-1.50	0.00	
6,200.0	11.12	242.70	5,640.2	-1,126.1	-2,182.2	2,455.7	1.50	-1.50	0.00	
6,300.0	9.62	242.70	5,738.6	-1,134.4	-2,198.2	2,473.7	1.50	-1.50	0.00	
6,400.0	8.12	242.70	5,837.4	-1,141.4	-2,211.9	2,489.1	1.50	-1.50	0.00	
6,500.0	6.62	242.70	5,936.6	-1,147.3	-2,223.3	2,501.9	1.50	-1.50	0.00	
6,600.0	5.12	242.70	6,036.0	-1,152.0	-2,232.4	2,512.1	1.50	-1.50	0.00	
6,700.0	3.62	242.70	6,135.7	-1,155.5	-2,239.2	2,519.8	1.50	-1.50	0.00	
6,800.0	2.12	242.70	6,235.6	-1,157.8	-2,243.6	2,524.8	1.50	-1.50	0.00	
6,900.0	0.62	242.70	6,335.6	-1,158.9	-2,245.8	2,527.2	1.50	-1.50	0.00	
6,941.4	0.00	0.00	6,377.0	-1,159.0	-2,246.0	2,527.4	1.50	-1.50	0.00	
<b>Start 2974.0 hold at 6941.4 MD</b>										
7,000.0	0.00	0.00	6,435.6	-1,159.0	-2,246.0	2,527.4	0.00	0.00	0.00	
7,100.0	0.00	0.00	6,535.6	-1,159.0	-2,246.0	2,527.4	0.00	0.00	0.00	
7,200.0	0.00	0.00	6,635.6	-1,159.0	-2,246.0	2,527.4	0.00	0.00	0.00	
7,300.0	0.00	0.00	6,735.6	-1,159.0	-2,246.0	2,527.4	0.00	0.00	0.00	
7,400.0	0.00	0.00	6,835.6	-1,159.0	-2,246.0	2,527.4	0.00	0.00	0.00	
7,500.0	0.00	0.00	6,935.6	-1,159.0	-2,246.0	2,527.4	0.00	0.00	0.00	
7,600.0	0.00	0.00	7,035.6	-1,159.0	-2,246.0	2,527.4	0.00	0.00	0.00	
7,700.0	0.00	0.00	7,135.6	-1,159.0	-2,246.0	2,527.4	0.00	0.00	0.00	
7,800.0	0.00	0.00	7,235.6	-1,159.0	-2,246.0	2,527.4	0.00	0.00	0.00	
7,900.0	0.00	0.00	7,335.6	-1,159.0	-2,246.0	2,527.4	0.00	0.00	0.00	
8,000.0	0.00	0.00	7,435.6	-1,159.0	-2,246.0	2,527.4	0.00	0.00	0.00	
8,100.0	0.00	0.00	7,535.6	-1,159.0	-2,246.0	2,527.4	0.00	0.00	0.00	
8,200.0	0.00	0.00	7,635.6	-1,159.0	-2,246.0	2,527.4	0.00	0.00	0.00	
8,300.0	0.00	0.00	7,735.6	-1,159.0	-2,246.0	2,527.4	0.00	0.00	0.00	
8,400.0	0.00	0.00	7,835.6	-1,159.0	-2,246.0	2,527.4	0.00	0.00	0.00	
8,500.0	0.00	0.00	7,935.6	-1,159.0	-2,246.0	2,527.4	0.00	0.00	0.00	
8,600.0	0.00	0.00	8,035.6	-1,159.0	-2,246.0	2,527.4	0.00	0.00	0.00	
8,700.0	0.00	0.00	8,135.6	-1,159.0	-2,246.0	2,527.4	0.00	0.00	0.00	
8,800.0	0.00	0.00	8,235.6	-1,159.0	-2,246.0	2,527.4	0.00	0.00	0.00	
8,900.0	0.00	0.00	8,335.6	-1,159.0	-2,246.0	2,527.4	0.00	0.00	0.00	
9,000.0	0.00	0.00	8,435.6	-1,159.0	-2,246.0	2,527.4	0.00	0.00	0.00	
9,100.0	0.00	0.00	8,535.6	-1,159.0	-2,246.0	2,527.4	0.00	0.00	0.00	
9,200.0	0.00	0.00	8,635.6	-1,159.0	-2,246.0	2,527.4	0.00	0.00	0.00	
9,300.0	0.00	0.00	8,735.6	-1,159.0	-2,246.0	2,527.4	0.00	0.00	0.00	
9,400.0	0.00	0.00	8,835.6	-1,159.0	-2,246.0	2,527.4	0.00	0.00	0.00	
9,500.0	0.00	0.00	8,935.6	-1,159.0	-2,246.0	2,527.4	0.00	0.00	0.00	
9,600.0	0.00	0.00	9,035.6	-1,159.0	-2,246.0	2,527.4	0.00	0.00	0.00	
9,700.0	0.00	0.00	9,135.6	-1,159.0	-2,246.0	2,527.4	0.00	0.00	0.00	
9,800.0	0.00	0.00	9,235.6	-1,159.0	-2,246.0	2,527.4	0.00	0.00	0.00	
9,900.0	0.00	0.00	9,335.6	-1,159.0	-2,246.0	2,527.4	0.00	0.00	0.00	

<b>Database:</b>	NN	<b>Local Co-ordinate Reference:</b>	Well TR 13-28-597 - Slot TR 13-28-597
<b>Company:</b>	Terra Energy Partners, LLP	<b>TVD Reference:</b>	RKB @ 8513.0ft
<b>Project:</b>	Garfield County, CO (Nad 83)	<b>MD Reference:</b>	RKB @ 8513.0ft
<b>Site:</b>	TR 32-28-597 Pad	<b>North Reference:</b>	True
<b>Well:</b>	TR 13-28-597	<b>Survey Calculation Method:</b>	Minimum Curvature
<b>Wellbore:</b>	OWB		
<b>Design:</b>	Plan		

Planned Survey									
Measured Depth (ft)	Inclination (°)	Azimuth (°)	Vertical Depth (ft)	+N/-S (ft)	+E/-W (ft)	Vertical Section (ft)	Dogleg Rate (°/100usft)	Build Rate (°/100usft)	Turn Rate (°/100usft)
9,915.4	0.00	0.00	9,351.0	-1,159.0	-2,246.0	2,527.4	0.00	0.00	0.00
TD at 9915.4									

Design Targets									
Target Name	Dip Angle (°)	Dip Dir. (°)	TVD (ft)	+N/-S (ft)	+E/-W (ft)	Northing (usft)	Easting (usft)	Latitude	Longitude
TR 13-28-597 VP - hit/miss target - Shape - Point	0.00	0.00	6,377.0	-1,159.0	-2,246.0	1,649,603.900	2,213,763.700	39.583806	-108.290010
TR 13-28-597 BHL - plan hits target center - Circle (radius 50.0)	0.00	0.00	9,351.0	-1,159.0	-2,246.0	1,649,603.900	2,213,763.700	39.583806	-108.290010

Casing Points					
Measured Depth (ft)	Vertical Depth (ft)	Name	Casing Diameter (")	Hole Diameter (")	
3,185.6	2,908.0	9 5/8"	9-5/8	12-1/4	

Formations						
Measured Depth (ft)	Vertical Depth (ft)	Name	Lithology	Dip (°)	Dip Direction (°)	
0.0	0.0	GRRV		0.00		
2,791.0	2,558.0	U WSCH		0.00		
4,633.2	4,192.0	G SAND		0.00		
4,835.0	4,371.0	FRUN		0.00		
6,040.1	5,484.0	OCRK		0.00		
6,638.1	6,074.0	UMVRD		0.00		
6,941.4	6,377.0	TOPGAS		0.00		
8,764.4	8,200.0	CMEO		0.00		
9,034.4	8,470.0	RLNS		0.00		
9,221.4	8,657.0	CZZT		0.00		
9,449.4	8,885.0	CRCN		0.00		
9,599.4	9,035.0	SEGO		0.00		

Plan Annotations				
Measured Depth (ft)	Vertical Depth (ft)	+N/-S (ft)	+E/-W (ft)	Comment
120.0	120.0	0.0	0.0	Start Build 3.00
1,036.7	1,001.9	-99.0	-191.8	Start 4071.4 hold at 1036.7 MD
5,108.0	4,613.2	-961.1	-1,862.4	Start Drop -1.50
6,941.4	6,377.0	-1,159.0	-2,246.0	Start 2974.0 hold at 6941.4 MD
9,915.4	9,351.0	-1,159.0	-2,246.0	TD at 9915.4