

NOBLE ENERGY, INC

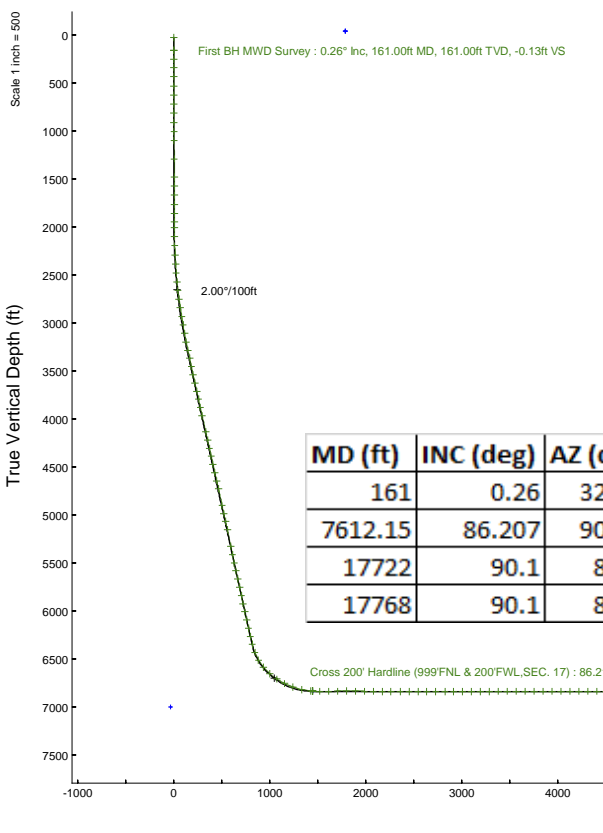
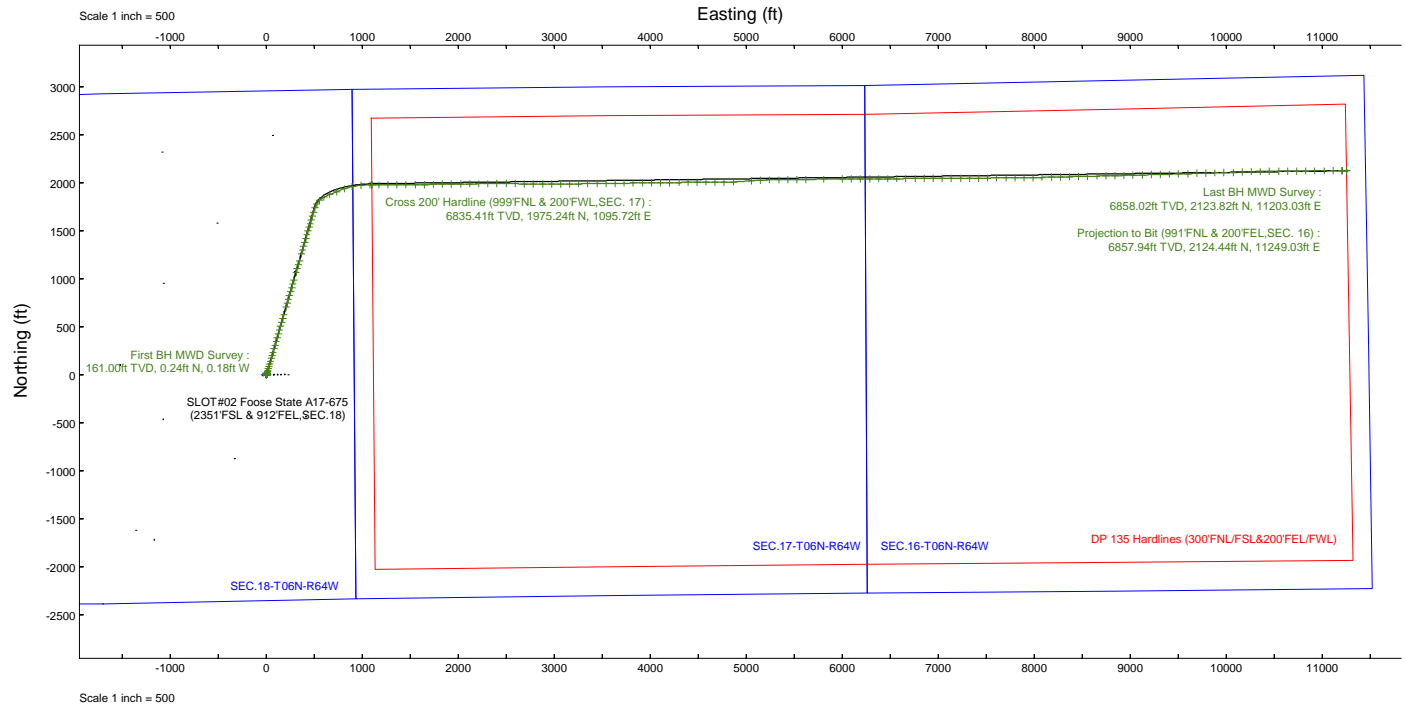
Plot reference wellpath is Foose State A17-675 (REV-B.0) PWP	Grid System: NAD83 / Lambert Colorado SP, Northern Zone (501), US feet
True vertical depths are referenced to Pten 268 (4702 GL+29KB@4731 RKB) (RKB)	North Reference: Grid north
Reference wellpath measured depths are referenced to Pten 268 (4702 GL+29KB@4731 RKB) (RKB)	Scale: True distance
Pten 268 (4702 GL+29KB@4731 RKB) (RKB) to Mean Sea Level: 4731 feet	Coordinates are in feet referenced to Slot
Mean Sea Level to Ground level (At Slot: SLOTH02 Foose State A17-675 (2351 FSL & 912 FEL, SEC. 18)) : 0 feet	Depths are in feet
Offset wellpath MDs are referenced to each path's default MD datum	Created by: marsam01 on 2023-12-28; Database: WA_Driver

Location: COLORADO Slot: SLOTH02 Foose State A17-675 (2351 FSL & 912 FEL, SEC. 18)

Field: WELD COUNTY (NOBLE NAD 83 GRID) Well: Foose State A17-675

Facility: SEC.18-T06N-R64W Wellbore: Foose State A17-675 PWB

Location Information						
Facility Name			Grid East (US ft)	Grid North (US ft)	Latitude	Longitude
SEC.18-T06N-R64W			3253919.886	1420891.224	40°29'6.5760"N	104°35'13.6680"W
Slot	Local N (ft)	Local E (ft)	Grid East (US ft)	Grid North (US ft)	Latitude	Longitude
SLOTH02 Foose State A17-675 (2351 FSL & 912 FEL, SEC. 18)	0.37	36.16	3253956.045	1420891.596	40°29'6.5760"N	104°35'13.2000"W
Pten 268 (4702 GL+29KB@4731 RKB) (RKB) to Ground level (At Slot: SLOTH02 Foose State A17-675 (2351 FSL & 912 FEL, SEC. 18))						4731ft
Mean Sea Level to Ground level (At Slot: SLOTH02 Foose State A17-675 (2351 FSL & 912 FEL, SEC. 18))						0ft
Pten 268 (4702 GL+29KB@4731 RKB) (RKB) to Mean Sea Level						4731ft



MD (ft)	INC (deg)	AZ (deg)	TVD (ft)	Local N (ft)	Local E (ft)	Comment
161	0.26	323.32	161	0.24	-0.18	First BH MWD Survey
7612.15	86.207	90.379	6835.41	1975.24	1095.72	Cross 200' Hardline (999'FNL & 200'FWL, SEC. 17)
17722	90.1	89.22	6858.02	2123.82	11203.03	Last BH MWD Survey
17768	90.1	89.22	6857.94	2124.44	11249.03	Projection to Bit (991'FNL & 200'FEL, SEC. 16)

Last BH MWD Survey : 90.10° Inc, 17722.00ft MD, 6858.02ft TVD, 11402.56ft VS
 Projection to Bit (991'FNL & 200'FEL, SEC. 16) : 90.10° Inc, 17768.00ft MD, 6857.94ft TVD, 11447.88ft VS

Vertical Section (ft) Azimuth 79.31° with reference 0.00 N, 0.00 E Scale 1 inch = 500

REFERENCE WELLPATH IDENTIFICATION

Operator	NOBLE ENERGY, INC	Well	Foose State A17-675
Field	WELD COUNTY (NOBLE NAD 83 GRID)	API/Legal	05-123-52157
Facility	SEC.18-T06N-R64W	Wellbore	Foose State A17-675 AWB
Slot	SLOT#02 Foose State A17-675 (2351'FSL & 912'FEL,SEC.18)		

REPORT SETUP INFORMATION

Projection System	NAD83 / Lambert Colorado SP, Northern Zone (501), US feet	Software System	WellArchitect® 6.0
North Reference	Grid	User	Martsam01
Scale	0.999965	Report Generated	12/27/2023 at 3:12:06 PM
Convergence at slot	0.59° East	Database	WA_Denver

WELLPATH LOCATION

	Local coordinates		Grid coordinates		Geographic coordinates	
	North[ft]	East[ft]	Easting[US ft]	Northing[US ft]	Latitude	Longitude
Slot Location	0.37	36.16	3253956.05	1420891.60	40.4851600°	-104.5870000°
Facility Reference Pt			3253919.89	1420891.22	40.4851600°	-104.5871300°
Field Reference Pt			3000000.00	4454105.15	48.7761986°	-105.5000000°

WELLPATH DATUM

Calculation method	Minimum curvature	Pten 268 (4702'GL+29'KB@4731'RKB) (RKB) to Facility Vertical Datum	4731.00ft
Horizontal Reference Pt	Slot	Pten 268 (4702'GL+29'KB@4731'RKB) (RKB) to Mean Sea Level	4731.00ft
Vertical Reference Pt	Pten 268 (4702'GL+29'KB@4731'RKB) (RKB)	Pten 268 (4702'GL+29'KB@4731'RKB) (RKB) to Ground Level at Slot (SLOT#02 Foose State A17-675 (2351'FSL & 912'FEL,SEC.18))	4731.00ft
MD Reference Pt	Pten 268 (4702'GL+29'KB@4731'RKB) (RKB)	Section Origin	N 0.00, E 0.00 ft
Field Vertical Reference	Mean Sea Level	Section Azimuth	79.31°

REFERENCE WELLPATH IDENTIFICATION			
Operator	NOBLE ENERGY, INC	Well	Foose State A17-675
Field	WELD COUNTY (NOBLE NAD 83 GRID)	API/Legal	05-123-52157
Facility	SEC.18-T06N-R64W	Wellbore	Foose State A17-675 AWB
Slot	SLOT#02 Foose State A17-675 (2351'FSL & 912'FEL,SEC.18)		

WELLPATH DATA (184 stations) † = interpolated, ‡ = extrapolated station

MD [ft]	Inclination [°]	Azimuth [°]	TVD [ft]	Vert Sect [ft]	North [ft]	East [ft]	Latitude	Longitude	DLS [°/100ft]	Comments
0.00†	0.000	323.320	0.00	0.00	0.00	0.00	40.4851600	-104.5870000	0.00	
29.00	0.000	323.320	29.00	0.00	0.00	0.00	40.4851600	-104.5870000	0.00	
161.00	0.260	323.320	161.00	-0.13	0.24	-0.18	40.4851607	-104.5870006	0.20	First BH MWD Survey
252.00	0.250	338.680	252.00	-0.26	0.59	-0.37	40.4851616	-104.5870013	0.08	
342.00	0.230	334.030	342.00	-0.34	0.94	-0.52	40.4851626	-104.5870019	0.03	
436.00	0.250	359.700	436.00	-0.35	1.31	-0.61	40.4851636	-104.5870021	0.12	
531.00	0.260	347.620	531.00	-0.32	1.73	-0.66	40.4851648	-104.5870023	0.06	
626.00	0.210	344.190	626.00	-0.35	2.11	-0.75	40.4851658	-104.5870026	0.05	
721.00	0.380	358.340	720.99	-0.31	2.59	-0.81	40.4851671	-104.5870028	0.19	
816.00	0.360	15.680	815.99	-0.13	3.19	-0.73	40.4851688	-104.5870025	0.12	
911.00	0.360	14.770	910.99	0.13	3.77	-0.58	40.4851704	-104.5870019	0.01	
1006.00	0.380	25.280	1005.99	0.44	4.34	-0.37	40.4851719	-104.5870012	0.07	
1101.00	0.430	30.390	1100.99	0.86	4.93	-0.05	40.4851735	-104.5870000	0.06	
1291.00	0.430	33.580	1290.98	1.83	6.14	0.70	40.4851768	-104.5869972	0.01	
1480.00	0.580	43.060	1479.97	3.10	7.43	1.75	40.4851803	-104.5869934	0.09	
1575.00	0.540	50.220	1574.97	3.88	8.07	2.42	40.4851821	-104.5869910	0.08	
1670.00	0.600	51.840	1669.96	4.71	8.66	3.16	40.4851837	-104.5869883	0.07	
1765.00	0.660	33.090	1764.96	5.53	9.43	3.85	40.4851858	-104.5869858	0.22	
1860.00	0.100	18.050	1859.96	5.95	9.97	4.17	40.4851872	-104.5869846	0.59	
1945.00	0.510	213.680	1944.95	5.72	9.72	3.98	40.4851866	-104.5869853	0.71	
2008.00	0.650	222.170	2007.95	5.24	9.22	3.59	40.4851852	-104.5869868	0.26	
2102.00	1.730	17.380	2101.94	5.48	10.18	3.65	40.4851878	-104.5869865	2.49	
2197.00	3.850	16.400	2196.82	7.61	14.61	4.98	40.4852000	-104.5869815	2.23	
2292.00	5.230	16.410	2291.52	11.03	21.82	7.11	40.4852197	-104.5869736	1.45	
2386.00	7.210	16.100	2384.96	15.64	31.60	9.95	40.4852465	-104.5869631	2.11	
2481.00	10.550	16.030	2478.81	22.24	45.69	14.01	40.4852850	-104.5869480	3.52	
2576.00	12.700	16.030	2571.86	30.85	64.09	19.29	40.4853354	-104.5869283	2.26	
2670.00	15.040	16.130	2663.11	41.00	85.74	25.54	40.4853946	-104.5869050	2.49	
2765.00	17.330	16.080	2754.34	52.94	111.18	32.88	40.4854642	-104.5868777	2.41	
2859.00	20.490	15.800	2843.25	66.59	140.47	41.24	40.4855444	-104.5868466	3.36	
2954.00	18.720	16.250	2932.74	80.92	171.11	50.03	40.4856282	-104.5868138	1.87	
3049.00	20.070	15.800	3022.35	95.10	201.43	58.74	40.4857112	-104.5867814	1.43	
3143.00	22.010	15.840	3110.08	110.16	233.90	67.94	40.4858001	-104.5867471	2.06	
3238.00	23.020	15.920	3197.84	126.44	268.89	77.89	40.4858958	-104.5867100	1.06	
3333.00	25.910	16.050	3284.30	144.10	306.70	88.73	40.4859993	-104.5866697	3.04	
3427.00	25.570	16.110	3368.97	162.49	345.93	100.04	40.4861067	-104.5866276	0.36	
3522.00	24.510	15.860	3455.04	180.55	384.58	111.11	40.4862124	-104.5865863	1.12	
3617.00	26.070	16.100	3540.93	198.77	423.60	122.29	40.4863192	-104.5865447	1.65	
3711.00	26.470	15.950	3625.23	217.47	463.58	133.77	40.4864286	-104.5865020	0.43	
3806.00	26.370	15.940	3710.30	236.43	504.23	145.38	40.4865399	-104.5864587	0.11	
3901.00	26.370	16.000	3795.42	255.36	544.80	156.99	40.4866509	-104.5864155	0.03	
3995.00	26.420	16.140	3879.62	274.18	584.95	168.56	40.4867608	-104.5863724	0.08	
4090.00	26.380	16.150	3964.71	293.25	625.53	180.31	40.4868718	-104.5863287	0.04	
4279.00	26.180	16.030	4134.18	330.96	705.93	203.50	40.4870918	-104.5862423	0.11	
4374.00	26.270	16.070	4219.40	349.85	746.27	215.10	40.4872022	-104.5861991	0.10	

REFERENCE WELLPATH IDENTIFICATION			
Operator	NOBLE ENERGY, INC	Well	Foose State A17-675
Field	WELD COUNTY (NOBLE NAD 83 GRID)	API/Legal	05-123-52157
Facility	SEC.18-T06N-R64W	Wellbore	Foose State A17-675 AWB
Slot	SLOT#02 Foose State A17-675 (2351'FSL & 912'FEL,SEC.18)		

WELLPATH DATA (184 stations) † = interpolated, ‡ = extrapolated station

MD [ft]	Inclination [°]	Azimuth [°]	TVD [ft]	Vert Sect [ft]	North [ft]	East [ft]	Latitude	Longitude	DLS [°/100ft]	Comments
4468.00	26.200	16.200	4303.71	368.61	786.19	226.65	40.4873115	-104.5861561	0.10	
4563.00	26.170	16.060	4388.96	387.52	826.46	238.30	40.4874217	-104.5861128	0.07	
4658.00	26.370	16.370	4474.15	406.55	866.83	250.04	40.4875321	-104.5860691	0.26	
4752.00	26.190	16.310	4558.44	425.47	906.77	261.75	40.4876414	-104.5860255	0.19	
4847.00	26.100	16.160	4643.72	444.43	946.96	273.45	40.4877514	-104.5859819	0.12	
4941.00	26.210	15.930	4728.09	463.07	986.78	284.90	40.4878604	-104.5859393	0.16	
5131.00	25.440	16.400	4899.11	500.46	1066.28	307.94	40.4880779	-104.5858535	0.42	
5225.00	26.420	16.050	4983.65	519.07	1105.75	319.43	40.4881859	-104.5858108	1.06	
5320.00	25.880	16.070	5068.93	537.91	1145.98	331.01	40.4882960	-104.5857676	0.57	
5415.00	24.280	15.980	5154.97	556.02	1184.68	342.13	40.4884019	-104.5857262	1.68	
5604.00	24.010	16.160	5327.43	590.83	1258.97	363.52	40.4886052	-104.5856466	0.15	
5698.00	26.050	16.080	5412.60	608.77	1297.18	374.57	40.4887098	-104.5856055	2.17	
5793.00	25.960	16.140	5497.98	627.56	1337.20	386.12	40.4888193	-104.5855624	0.10	
5888.00	25.680	16.140	5583.50	646.23	1376.94	397.63	40.4889281	-104.5855196	0.29	
5982.00	25.830	15.990	5668.16	664.62	1416.19	408.93	40.4890355	-104.5854775	0.17	
6077.00	25.900	16.150	5753.64	683.29	1456.02	420.40	40.4891445	-104.5854348	0.10	
6172.00	25.780	16.180	5839.14	701.99	1495.79	431.93	40.4892533	-104.5853919	0.13	
6266.00	25.670	16.050	5923.83	720.40	1534.98	443.25	40.4893605	-104.5853497	0.13	
6361.00	24.320	15.750	6009.93	738.37	1573.59	454.25	40.4894662	-104.5853087	1.43	
6456.00	25.940	16.130	6095.93	756.46	1612.38	465.34	40.4895723	-104.5852675	1.71	
6550.00	26.580	16.080	6180.23	775.21	1652.34	476.87	40.4896817	-104.5852245	0.68	
6645.00	28.370	15.590	6264.51	794.78	1694.50	488.83	40.4897971	-104.5851800	1.90	
6739.00	28.520	17.510	6347.17	815.27	1737.41	501.58	40.4899145	-104.5851325	0.99	
6834.00	28.720	33.670	6430.69	841.99	1778.10	521.09	40.4900256	-104.5850609	8.13	
6929.00	34.470	47.690	6511.68	880.93	1815.27	553.70	40.4901267	-104.5849423	9.79	
7023.00	40.950	59.880	6586.11	932.76	1848.72	600.13	40.4902172	-104.5847741	10.48	
7118.00	49.550	66.750	6652.97	997.56	1878.69	660.41	40.4902978	-104.5845563	10.40	
7213.00	56.690	69.020	6709.95	1072.01	1907.21	730.79	40.4903740	-104.5843022	7.75	
7307.00	64.000	71.050	6756.43	1152.58	1935.03	807.52	40.4904482	-104.5840253	8.00	
7402.00	70.800	77.090	6792.95	1239.82	1958.96	891.79	40.4905115	-104.5837215	9.25	
7496.00	76.990	85.550	6819.05	1329.93	1972.47	980.95	40.4905461	-104.5834005	10.86	
7591.00	85.130	90.750	6833.81	1422.55	1975.45	1074.63	40.4905516	-104.5830636	10.13	
7612.15†	86.207	90.379	6835.41	1443.23	1975.24	1095.72	40.4905504	-104.5829878	5.39	Cross 200' Hardline (999'FNL & 200'FWL,SEC. 17)
7615.00†	86.353	90.329	6835.60	1446.02	1975.22	1098.57	40.4905503	-104.5829775	5.39	Shallowest MD for Perf
7686.00	89.970	89.090	6837.87	1515.80	1975.58	1169.52	40.4905493	-104.5827225	5.39	
7780.00	90.090	89.850	6837.82	1608.33	1976.45	1263.51	40.4905490	-104.5823845	0.82	
7875.00	91.390	90.370	6836.60	1701.63	1976.27	1358.50	40.4905458	-104.5820430	1.47	
7970.00	89.780	89.220	6835.63	1795.04	1976.61	1453.49	40.4905440	-104.5817015	2.08	
8065.00	89.480	89.040	6836.24	1888.64	1978.05	1548.48	40.4905453	-104.5813600	0.37	
8159.00	89.570	88.350	6837.02	1981.38	1980.19	1642.45	40.4905485	-104.5810221	0.74	
8254.00	89.570	89.070	6837.73	2075.10	1982.33	1737.42	40.4905516	-104.5806806	0.76	
8349.00	89.660	89.260	6838.37	2168.69	1983.71	1832.41	40.4905527	-104.5803390	0.22	
8443.00	89.380	89.190	6839.16	2261.29	1984.98	1926.40	40.4905536	-104.5800011	0.31	
8538.00	89.630	89.250	6839.98	2354.86	1986.28	2021.39	40.4905544	-104.5796596	0.27	
8633.00	89.750	89.430	6840.49	2448.41	1987.37	2116.38	40.4905547	-104.5793180	0.23	

REFERENCE WELLPATH IDENTIFICATION			
Operator	NOBLE ENERGY, INC	Well	Foose State A17-675
Field	WELD COUNTY (NOBLE NAD 83 GRID)	API/Legal	05-123-52157
Facility	SEC.18-T06N-R64W	Wellbore	Foose State A17-675 AWB
Slot	SLOT#02 Foose State A17-675 (2351'FSL & 912'FEL,SEC.18)		

WELLPATH DATA (184 stations)

MD [ft]	Inclination [°]	Azimuth [°]	TVD [ft]	Vert Sect [ft]	North [ft]	East [ft]	Latitude	Longitude	DLS [°/100ft]	Comments
8728.00	89.750	89.450	6840.91	2541.93	1988.30	2211.37	40.4905545	-104.5789765	0.02	
8822.00	89.970	89.580	6841.14	2634.44	1989.10	2305.37	40.4905540	-104.5786385	0.27	
8917.00	89.920	89.530	6841.23	2727.92	1989.83	2400.37	40.4905534	-104.5782970	0.07	
9012.00	89.980	89.710	6841.31	2821.39	1990.46	2495.36	40.4905524	-104.5779555	0.20	
9107.00	90.900	91.600	6840.58	2914.52	1989.38	2590.35	40.4905467	-104.5776140	2.21	
9201.00	90.040	91.670	6839.81	3006.35	1986.70	2684.31	40.4905366	-104.5772764	0.92	
9296.00	89.880	89.440	6839.88	3099.52	1985.78	2779.30	40.4905314	-104.5769349	2.35	
9391.00	89.640	89.630	6840.28	3193.01	1986.55	2874.29	40.4905308	-104.5765934	0.32	
9485.00	92.160	91.140	6838.80	3285.23	1985.92	2968.27	40.4905264	-104.5762555	3.13	
9580.00	89.850	89.360	6837.13	3378.48	1985.50	3063.24	40.4905225	-104.5759141	3.07	
9675.00	89.850	89.270	6837.38	3472.04	1986.64	3158.23	40.4905229	-104.5755726	0.09	
9769.00	90.010	89.220	6837.50	3564.62	1987.88	3252.23	40.4905236	-104.5752346	0.18	
9864.00	90.010	89.010	6837.48	3658.24	1989.34	3347.22	40.4905250	-104.5748931	0.22	
9959.00	89.950	89.310	6837.51	3751.83	1990.74	3442.21	40.4905261	-104.5745516	0.32	
10053.00	90.190	89.050	6837.40	3844.44	1992.08	3536.20	40.4905271	-104.5742136	0.38	
10148.00	89.950	89.450	6837.28	3938.01	1993.33	3631.19	40.4905277	-104.5738721	0.49	
10243.00	89.910	89.450	6837.40	4031.53	1994.24	3726.18	40.4905275	-104.5735305	0.04	
10337.00	89.730	89.250	6837.69	4124.09	1995.30	3820.18	40.4905278	-104.5731926	0.29	
10432.00	90.280	89.720	6837.69	4217.59	1996.16	3915.17	40.4905274	-104.5728510	0.76	
10527.00	89.880	89.350	6837.55	4311.08	1996.93	4010.17	40.4905268	-104.5725095	0.57	
10621.00	89.790	89.340	6837.82	4403.64	1998.00	4104.16	40.4905270	-104.5721715	0.10	
10716.00	89.700	89.250	6838.25	4497.20	1999.17	4199.15	40.4905275	-104.5718300	0.13	
10811.00	89.670	88.650	6838.77	4590.86	2000.91	4294.14	40.4905295	-104.5714885	0.63	
10905.00	89.180	87.270	6839.71	4683.78	2004.26	4388.07	40.4905360	-104.5711507	1.56	
11000.00	90.220	89.390	6840.21	4777.59	2007.03	4483.02	40.4905409	-104.5708092	2.49	
11095.00	89.610	89.360	6840.35	4871.13	2008.06	4578.01	40.4905410	-104.5704677	0.64	
11190.00	89.880	92.020	6840.77	4964.25	2006.92	4673.00	40.4905351	-104.5701262	2.81	
11284.00	90.040	90.040	6840.84	5056.29	2005.23	4766.98	40.4905278	-104.5697884	2.11	
11379.00	89.790	86.960	6840.98	5150.05	2007.72	4861.93	40.4905319	-104.5694470	3.25	
11568.00	90.160	85.500	6841.06	5337.67	2020.14	5050.52	40.4905605	-104.5687686	0.80	
11663.00	90.010	87.510	6840.92	5431.92	2025.93	5145.34	40.4905737	-104.5684275	2.12	
11757.00	90.250	89.530	6840.71	5524.70	2028.36	5239.30	40.4905777	-104.5680896	2.16	
11852.00	90.100	89.810	6840.42	5618.15	2028.91	5334.30	40.4905764	-104.5677480	0.33	
11947.00	89.910	89.190	6840.41	5711.65	2029.74	5429.29	40.4905760	-104.5674065	0.68	
12042.00	89.080	88.700	6841.25	5805.30	2031.49	5524.27	40.4905780	-104.5670650	1.01	
12136.00	88.340	89.060	6843.36	5897.97	2033.32	5618.23	40.4905803	-104.5667271	0.88	
12325.00	90.040	89.450	6846.03	6084.10	2035.78	5807.19	40.4905816	-104.5660477	0.92	
12515.00	90.340	89.390	6845.40	6271.15	2037.70	5997.18	40.4905814	-104.5653646	0.16	
12610.00	90.100	89.550	6845.04	6364.65	2038.58	6092.17	40.4905811	-104.5650231	0.30	
12704.00	90.410	89.390	6844.62	6457.18	2039.45	6186.17	40.4905807	-104.5646852	0.37	
12799.00	89.910	89.570	6844.36	6550.68	2040.31	6281.16	40.4905804	-104.5643436	0.56	
12894.00	90.220	89.980	6844.25	6644.10	2040.69	6376.16	40.4905786	-104.5640021	0.54	
12988.00	89.970	89.840	6844.09	6736.50	2040.84	6470.16	40.4905763	-104.5636642	0.30	
13083.00	89.050	89.750	6844.90	6829.90	2041.18	6565.16	40.4905745	-104.5633226	0.97	
13178.00	89.050	89.660	6846.48	6923.33	2041.66	6660.14	40.4905731	-104.5629811	0.09	

REFERENCE WELLPATH IDENTIFICATION			
Operator	NOBLE ENERGY, INC	Well	Foose State A17-675
Field	WELD COUNTY (NOBLE NAD 83 GRID)	API/Legal	05-123-52157
Facility	SEC.18-T06N-R64W	Wellbore	Foose State A17-675 AWB
Slot	SLOT#02 Foose State A17-675 (2351'FSL & 912'FEL,SEC.18)		

WELLPATH DATA (184 stations)

MD [ft]	Inclination [°]	Azimuth [°]	TVD [ft]	Vert Sect [ft]	North [ft]	East [ft]	Latitude	Longitude	DLS [°/100ft]	Comments
13272.00	89.820	89.630	6847.41	7015.80	2042.25	6754.13	40.4905719	-104.5626432	0.82	
13367.00	89.700	89.690	6847.80	7109.25	2042.81	6849.13	40.4905707	-104.5623017	0.14	
13462.00	89.880	89.410	6848.15	7202.74	2043.56	6944.13	40.4905700	-104.5619601	0.35	
13556.00	89.730	89.430	6848.47	7295.28	2044.51	7038.12	40.4905699	-104.5616222	0.16	
13651.00	90.960	89.540	6847.90	7388.78	2045.36	7133.12	40.4905695	-104.5612807	1.30	
13746.00	89.970	89.900	6847.13	7482.21	2045.83	7228.11	40.4905680	-104.5609391	1.11	
13840.00	90.040	89.690	6847.12	7574.64	2046.16	7322.11	40.4905662	-104.5606012	0.24	
13935.00	89.730	89.360	6847.31	7668.13	2046.95	7417.11	40.4905656	-104.5602597	0.48	
14030.00	89.790	89.440	6847.71	7761.66	2047.94	7512.10	40.4905656	-104.5599181	0.11	
14124.00	89.640	89.630	6848.18	7854.16	2048.71	7606.10	40.4905649	-104.5595802	0.26	
14219.00	89.820	89.540	6848.63	7947.64	2049.40	7701.09	40.4905640	-104.5592386	0.21	
14314.00	89.940	89.480	6848.82	8041.13	2050.21	7796.09	40.4905635	-104.5588971	0.14	
14408.00	89.360	89.500	6849.40	8133.65	2051.04	7890.08	40.4905631	-104.5585591	0.62	
14503.00	89.450	88.690	6850.39	8227.26	2052.55	7985.06	40.4905644	-104.5582176	0.86	
14598.00	89.330	88.500	6851.40	8321.01	2054.87	8080.03	40.4905680	-104.5578761	0.24	
14693.00	89.300	88.570	6852.53	8414.77	2057.30	8174.99	40.4905719	-104.5575347	0.08	
14787.00	89.390	88.820	6853.61	8507.51	2059.44	8268.96	40.4905751	-104.5571968	0.28	
14882.00	89.420	88.750	6854.59	8601.21	2061.46	8363.94	40.4905778	-104.5568552	0.08	
14976.00	89.420	88.590	6855.55	8693.95	2063.64	8457.91	40.4905811	-104.5565173	0.17	
15071.00	89.540	88.780	6856.41	8787.67	2065.82	8552.88	40.4905843	-104.5561758	0.24	
15166.00	89.820	88.440	6856.94	8881.42	2068.12	8647.85	40.4905878	-104.5558343	0.46	
15260.00	89.910	88.710	6857.16	8974.20	2070.46	8741.82	40.4905915	-104.5554964	0.30	
15355.00	89.540	88.520	6857.62	9067.94	2072.76	8836.79	40.4905950	-104.5551549	0.44	
15450.00	89.790	88.760	6858.17	9161.68	2075.01	8931.76	40.4905984	-104.5548134	0.36	
15544.00	89.730	88.330	6858.56	9254.46	2077.40	9025.73	40.4906022	-104.5544755	0.46	
15639.00	89.820	88.370	6858.94	9348.28	2080.14	9120.69	40.4906070	-104.5541340	0.10	
15734.00	90.190	88.390	6858.93	9442.09	2082.82	9215.65	40.4906116	-104.5537925	0.39	
15829.00	91.480	88.660	6857.54	9535.85	2085.27	9310.61	40.4906155	-104.5534511	1.39	
15923.00	90.800	88.290	6855.67	9628.63	2087.77	9404.55	40.4906196	-104.5531132	0.82	
16018.00	89.940	88.380	6855.06	9722.45	2090.53	9499.51	40.4906244	-104.5527717	0.91	
16113.00	89.850	88.110	6855.24	9816.30	2093.44	9594.47	40.4906296	-104.5524303	0.30	
16207.00	89.820	88.190	6855.51	9909.18	2096.47	9688.42	40.4906352	-104.5520924	0.09	
16302.00	90.070	88.580	6855.60	10002.99	2099.15	9783.38	40.4906397	-104.5517509	0.49	
16397.00	89.940	88.460	6855.59	10096.76	2101.60	9878.35	40.4906437	-104.5514094	0.19	
16492.00	89.850	88.520	6855.76	10190.55	2104.11	9973.31	40.4906478	-104.5510679	0.11	
16586.00	89.820	88.740	6856.03	10283.30	2106.35	10067.29	40.4906512	-104.5507300	0.24	
16681.00	88.770	86.420	6857.20	10377.30	2110.36	10162.19	40.4906594	-104.5503887	2.68	
16776.00	89.450	88.970	6858.68	10471.26	2114.18	10257.09	40.4906671	-104.5500473	2.78	
16870.00	89.820	89.400	6859.28	10563.87	2115.52	10351.08	40.4906680	-104.5497094	0.60	
16965.00	89.910	89.340	6859.50	10657.41	2116.56	10446.07	40.4906681	-104.5493679	0.11	
17060.00	90.190	89.520	6859.42	10750.93	2117.51	10541.07	40.4906678	-104.5490263	0.35	
17155.00	90.000	89.120	6859.26	10844.48	2118.64	10636.06	40.4906681	-104.5486848	0.47	
17249.00	89.880	89.490	6859.36	10937.05	2119.78	10730.05	40.4906685	-104.5483468	0.41	
17344.00	90.070	89.300	6859.40	11030.58	2120.78	10825.05	40.4906685	-104.5480053	0.28	
17439.00	90.220	89.580	6859.16	11124.10	2121.71	10920.04	40.4906682	-104.5476637	0.33	

REFERENCE WELLPATH IDENTIFICATION

Operator	NOBLE ENERGY, INC	Well	Foose State A17-675
Field	WELD COUNTY (NOBLE NAD 83 GRID)	API/Legal	05-123-52157
Facility	SEC.18-T06N-R64W	Wellbore	Foose State A17-675 AWB
Slot	SLOT#02 Foose State A17-675 (2351'FSL & 912'FEL,SEC.18)		

WELLPATH DATA (184 stations) † = interpolated, ‡ = extrapolated station

MD [ft]	Inclination [°]	Azimuth [°]	TVD [ft]	Vert Sect [ft]	North [ft]	East [ft]	Latitude	Longitude	DLS [°/100ft]	Comments
17533.00	90.250	89.570	6858.77	11216.59	2122.41	11014.04	40.4906674	-104.5473258	0.03	
17628.00	90.280	89.750	6858.34	11310.04	2122.97	11109.04	40.4906661	-104.5469842	0.19	
17722.00	90.100	89.220	6858.02	11402.56	2123.82	11203.03	40.4906656	-104.5466463	0.60	Last BH MWD Survey
17768.00‡	90.100	89.220	6857.94	11447.88	2124.44	11249.03	40.4906660	-104.5464809	0.00	Projection to Bit (991'FNL & 200'FEL,SEC. 16)

TARGETS

Name	TVD [ft]	North [ft]	East [ft]	Grid East [US ft]	Grid North [US ft]	Latitude	Longitude	Shape
OGDP 1 SEC.16-T06N-R64W	-41.00	7371.29	424.69	3254380.72	1428262.61	40.5053800	-104.5852000	polygon
2D Polygon: dimensions not calculated								
OGDP 1 SEC.17-T06N-R64W	-41.00	7371.29	424.69	3254380.72	1428262.61	40.5053800	-104.5852000	polygon
2D Polygon: dimensions not calculated								
OGDP 1 SEC.18-T06N-R64W	-41.00	7371.29	424.69	3254380.72	1428262.61	40.5053800	-104.5852000	polygon
2D Polygon: dimensions not calculated								
Foose State A17-675 BHL Rev-2 (991'FNL & 200'FEL,SEC.16)	6838.00	2124.44	11249.55	3265205.19	1423015.95	40.4906660	-104.5464790	point
Foose State A17-675 LP Rev-2 (985'FNL & 200'FWL,SEC.17)	6838.00	1988.92	1095.72	3255051.72	1422880.45	40.4905880	-104.5829873	point
DP 135 Hardlines (300'FNL/FSL&200'FEL/FWL)	6999.00	-0.37	-36.16	3253919.89	1420891.22	40.4851600	-104.5871300	polygon
2D Polygon: dimensions not calculated								

WELLPATH COMPOSITION - Ref Wellbore: Foose State A17-675 AWB Ref Wellpath: Foose State A17-675 AWP

Start MD [ft]	End MD [ft]	Positional Uncertainty Model	Log Name/Comment	Wellbore	Survey Date
29.00	1945.00	OWSG MWD rev2 (MS+IFR1)	13.5" EVO Surface OWSG MWD rev2 (MS+IFR1) <161'-1945'>	Foose State A17-675 AWB	10/27/2023
1945.00	17768.00	OWSG MWD rev2 (MS+IFR1)	8.5" Lucida OWSG MWD Rev2 (MS+IFR1) <2008'-17722'>	Foose State A17-675 AWB	11/22/2023

REFERENCE WELLPATH IDENTIFICATION			
Operator	NOBLE ENERGY, INC	Well	Foose State A17-675
Field	WELD COUNTY (NOBLE NAD 83 GRID)	API/Legal	05-123-52157
Facility	SEC.18-T06N-R64W	Wellbore	Foose State A17-675 AWB
Slot	SLOT#02 Foose State A17-675 (2351'FSL & 912'FEL,SEC.18)		

WELLPATH COMMENTS				
MD [ft]	Inclination [°]	Azimuth [°]	TVD [ft]	Comment
161.00	0.260	323.320	161.00	First BH MWD Survey
7612.15	86.207	90.379	6835.41	Cross 200' Hardline (999'FNL & 200'FWL,SEC. 17)
7615.00	86.353	90.329	6835.60	Shallowest MD for Perf
17722.00	90.100	89.220	6858.02	Last BH MWD Survey
17768.00	90.100	89.220	6857.94	Projection to Bit (991'FNL & 200'FEL,SEC. 16)