

NOBLE ENERGY, INC

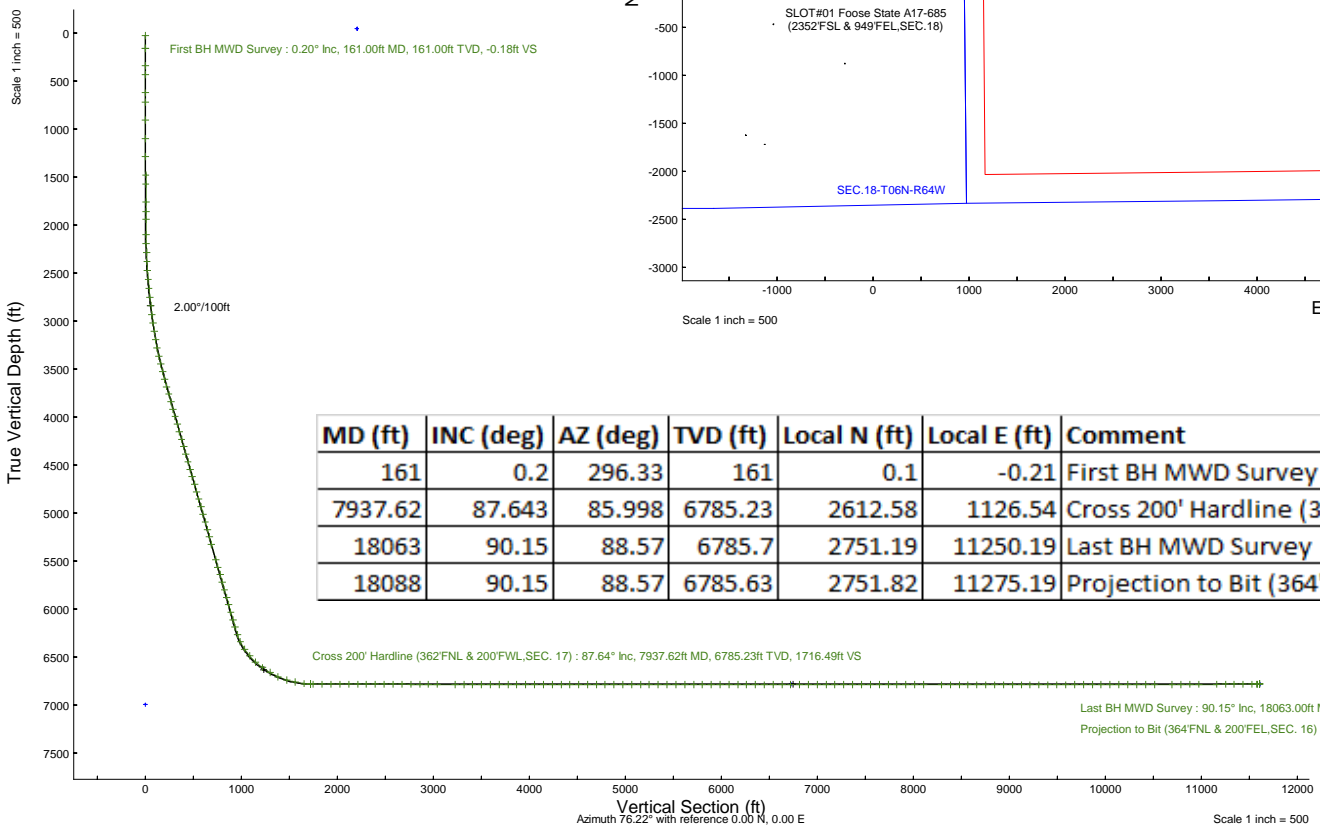
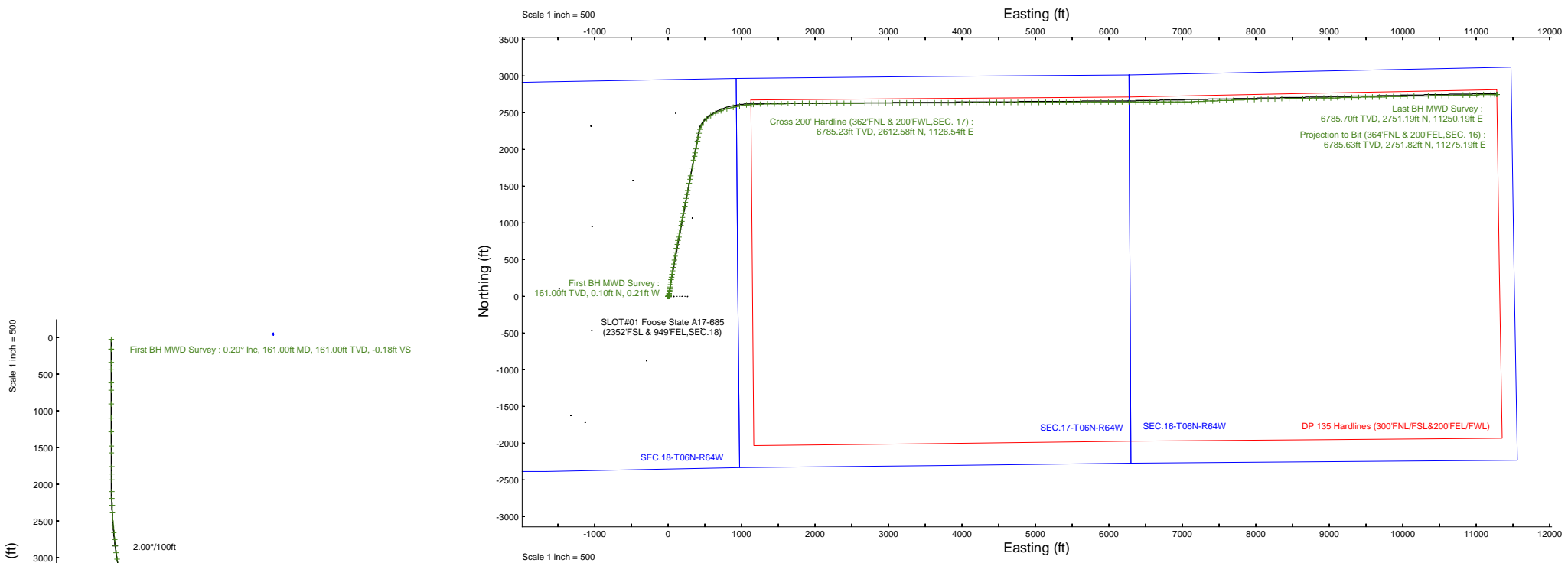
Location: COLORADO Slot: SLOT#01 Foose State A17-685 (2352'FSL & 949'FEL, SEC. 18)
 Field: WELD COUNTY (NOBLE NAD 83 GRID) Well: Foose State A17-685
 Facility: SEC.18-T06N-R64W Wellbore: Foose State A17-685 PWB



Plot reference wellpath is Foose State A17-685 (REV:B.0) PWP	Grid System: NAD83 / Lambert Colorado SP, Northern Zone (501), US feet
True vertical depths are referenced to Pten 268 (4702'GL+29'KB = 4731'RKB) (RKB)	North Reference: Grid north
Reference wellpath measured depths are referenced to Pten 268 (4702'GL+29'KB = 4731'RKB) (RKB)	Scale: True distance
Pten 268 (4702'GL+29'KB = 4731'RKB) (RKB) to Mean Sea Level: 4731 feet	Coordinates are in feet referenced to Slot
Mean Sea Level to Ground level (At Slot: SLOT#01 Foose State A17-685 (2352'FSL & 949'FEL, SEC. 18)): 0 feet	Depths are in feet
Offset wellpath MDs are referenced to each path's default MD datum	Created by: marsam01 on 2023-12-28; Database: WA_Driver

Location Information						
Facility Name			Grid East (US ft)	Grid North (US ft)	Latitude	Longitude
SEC.18-T06N-R64W			3253919.886	1420891.224	40°29'6.5760"N	104°35'13.6680"W
Slot	Local N (ft)	Local E (ft)	Grid East (US ft)	Grid North (US ft)	Latitude	Longitude
SLOT#01 Foose State A17-685 (2352'FSL & 949'FEL, SEC. 18)	0.00	0.00	3253919.886	1420891.224	40°29'6.5760"N	104°35'13.6680"W

Pten 268 (4702'GL+29'KB = 4731'RKB) (RKB) to Ground level (At Slot: SLOT#01 Foose State A17-685 (2352'FSL & 949'FEL, SEC. 18))	4731ft
Mean Sea Level to Ground level (At Slot: SLOT#01 Foose State A17-685 (2352'FSL & 949'FEL, SEC. 18))	0ft
Pten 268 (4702'GL+29'KB = 4731'RKB) (RKB) to Mean Sea Level	4731ft



MD (ft)	INC (deg)	AZ (deg)	TVD (ft)	Local N (ft)	Local E (ft)	Comment
161	0.2	296.33	161	0.1	-0.21	First BH MWD Survey
7937.62	87.643	85.998	6785.23	2612.58	1126.54	Cross 200' Hardline (362'FNL & 200'FWL, SEC. 17)
18063	90.15	88.57	6785.7	2751.19	11250.19	Last BH MWD Survey
18088	90.15	88.57	6785.63	2751.82	11275.19	Projection to Bit (364'FNL & 200'FEL, SEC. 16)

REFERENCE WELLPATH IDENTIFICATION

Operator	NOBLE ENERGY, INC	Well	Foose State A17-685
Field	WELD COUNTY (NOBLE NAD 83 GRID)	API/Legal	05-123-52156
Facility	SEC.18-T06N-R64W	Wellbore	Foose State A17-685 AWB
Slot	SLOT#01 Foose State A17-685 (2352'FSL & 949'FEL,SEC.18)		

REPORT SETUP INFORMATION

Projection System	NAD83 / Lambert Colorado SP, Northern Zone (501), US feet	Software System	WellArchitect® 6.0
North Reference	Grid	User	Martsam01
Scale	0.999965	Report Generated	12/27/2023 at 3:08:21 PM
Convergence at slot	0.59° East	Database	WA_Denver

WELLPATH LOCATION

	Local coordinates		Grid coordinates		Geographic coordinates	
	North[ft]	East[ft]	Easting[US ft]	Northing[US ft]	Latitude	Longitude
Slot Location	0.00	0.00	3253919.89	1420891.22	40.4851600°	-104.5871300°
Facility Reference Pt			3253919.89	1420891.22	40.4851600°	-104.5871300°
Field Reference Pt			3000000.00	4454105.15	48.7761986°	-105.5000000°

WELLPATH DATUM

Calculation method	Minimum curvature	Pten 268 (4702'GL+29'KB = 4731'RKB) (RKB) to Facility Vertical Datum	4731.00ft
Horizontal Reference Pt	Slot	Pten 268 (4702'GL+29'KB = 4731'RKB) (RKB) to Mean Sea Level	4731.00ft
Vertical Reference Pt	Pten 268 (4702'GL+29'KB = 4731'RKB) (RKB)	Pten 268 (4702'GL+29'KB = 4731'RKB) (RKB) to Ground Level at Slot (SLOT#01 Foose State A17-685 (2352'FSL & 949'FEL,SEC.18))	4731.00ft
MD Reference Pt	Pten 268 (4702'GL+29'KB = 4731'RKB) (RKB)	Section Origin	N 0.00, E 0.00 ft
Field Vertical Reference	Mean Sea Level	Section Azimuth	76.22°

REFERENCE WELLPATH IDENTIFICATION			
Operator	NOBLE ENERGY, INC	Well	Foose State A17-685
Field	WELD COUNTY (NOBLE NAD 83 GRID)	API/Legal	05-123-52156
Facility	SEC.18-T06N-R64W	Wellbore	Foose State A17-685 AWB
Slot	SLOT#01 Foose State A17-685 (2352'FSL & 949'FEL,SEC.18)		

WELLPATH DATA (183 stations) † = interpolated, ‡ = extrapolated station

MD [ft]	Inclination [°]	Azimuth [°]	TVD [ft]	Vert Sect [ft]	North [ft]	East [ft]	Latitude	Longitude	DLS ["/100ft]	Comments
0.00†	0.000	296.330	0.00	0.00	0.00	0.00	40.4851600	-104.5871300	0.00	
29.00	0.000	296.330	29.00	0.00	0.00	0.00	40.4851600	-104.5871300	0.00	
161.00	0.200	296.330	161.00	-0.18	0.10	-0.21	40.4851603	-104.5871307	0.15	First BH MWD Survey
342.00	0.160	341.660	342.00	-0.44	0.48	-0.57	40.4851613	-104.5871320	0.08	
436.00	0.150	338.070	436.00	-0.47	0.72	-0.66	40.4851620	-104.5871323	0.01	
626.00	0.200	5.970	626.00	-0.39	1.28	-0.71	40.4851635	-104.5871325	0.05	
721.00	0.160	34.110	721.00	-0.23	1.56	-0.62	40.4851643	-104.5871322	0.10	
911.00	0.140	18.190	911.00	0.09	2.00	-0.40	40.4851655	-104.5871314	0.02	
1101.00	0.280	71.950	1101.00	0.67	2.36	0.11	40.4851665	-104.5871295	0.12	
1291.00	0.310	67.700	1290.99	1.64	2.70	1.03	40.4851674	-104.5871262	0.02	
1480.00	0.480	73.290	1479.99	2.94	3.12	2.26	40.4851685	-104.5871218	0.09	
1575.00	0.390	55.560	1574.99	3.64	3.42	2.91	40.4851693	-104.5871194	0.17	
1765.00	0.420	38.530	1764.98	4.79	4.33	3.88	40.4851718	-104.5871159	0.07	
1860.00	0.180	144.070	1859.98	5.13	4.48	4.18	40.4851722	-104.5871148	0.53	
1944.00	0.640	198.820	1943.98	4.92	3.93	4.11	40.4851707	-104.5871151	0.66	
2102.00	2.180	11.260	2101.95	5.72	6.04	4.41	40.4851765	-104.5871139	1.78	
2197.00	4.010	12.150	2196.81	7.94	11.06	5.46	40.4851902	-104.5871100	1.93	
2292.00	5.320	9.860	2291.49	11.16	18.65	6.91	40.4852110	-104.5871045	1.39	
2386.00	7.510	11.810	2384.89	15.56	28.96	8.92	40.4852392	-104.5870969	2.34	
2481.00	9.540	11.470	2478.84	21.60	42.75	11.75	40.4852770	-104.5870862	2.14	
2576.00	11.560	10.100	2572.23	28.81	59.84	14.99	40.4853238	-104.5870739	2.14	
2670.00	13.630	7.740	2663.96	36.69	80.09	18.13	40.4853793	-104.5870619	2.27	
2765.00	15.270	8.530	2755.95	45.55	103.55	21.50	40.4854436	-104.5870489	1.74	
2859.00	19.380	8.470	2845.67	56.16	131.23	25.63	40.4855195	-104.5870330	4.37	
2954.00	18.570	8.450	2935.51	67.85	161.78	30.17	40.4856032	-104.5870155	0.85	
3049.00	21.230	7.520	3024.83	79.82	193.81	34.65	40.4856910	-104.5869983	2.82	
3143.00	22.690	7.870	3112.00	92.69	228.64	39.36	40.4857864	-104.5869800	1.56	
3238.00	23.170	7.850	3199.50	106.34	265.30	44.42	40.4858869	-104.5869605	0.51	
3333.00	26.670	9.970	3285.64	121.83	304.83	50.67	40.4859952	-104.5869366	3.80	
3427.00	28.860	10.090	3368.81	139.51	347.95	58.29	40.4861134	-104.5869076	2.33	
3522.00	31.230	10.290	3451.04	158.83	394.76	66.71	40.4862416	-104.5868756	2.50	
3617.00	33.940	9.780	3531.08	179.48	445.13	75.62	40.4863796	-104.5868417	2.87	
3711.00	34.270	9.680	3608.91	200.51	497.08	84.53	40.4865220	-104.5868078	0.36	
3806.00	34.250	9.580	3687.43	221.76	549.81	93.47	40.4866664	-104.5867736	0.06	
3901.00	34.330	10.240	3765.92	243.27	602.53	102.68	40.4868109	-104.5867386	0.40	
3995.00	34.360	10.730	3843.53	265.06	654.68	112.33	40.4869537	-104.5867020	0.30	
4090.00	34.260	10.700	3922.00	287.26	707.29	122.29	40.4870979	-104.5866642	0.11	
4184.00	34.210	11.160	3999.72	309.37	759.22	132.32	40.4872401	-104.5866262	0.28	
4279.00	34.280	11.310	4078.25	331.98	811.65	142.73	40.4873837	-104.5865869	0.12	
4374.00	34.320	10.790	4156.73	354.46	864.19	152.99	40.4875276	-104.5865480	0.31	
4468.00	34.480	10.880	4234.29	376.58	916.35	162.98	40.4876705	-104.5865102	0.18	
4563.00	34.540	10.750	4312.57	398.99	969.22	173.08	40.4878153	-104.5864719	0.10	
4658.00	34.390	11.200	4390.89	421.50	1022.00	183.31	40.4879599	-104.5864332	0.31	
4752.00	34.370	10.650	4468.47	443.68	1074.11	193.37	40.4881027	-104.5863951	0.33	
4847.00	34.040	10.890	4547.04	465.87	1126.58	203.35	40.4882464	-104.5863573	0.38	

REFERENCE WELLPATH IDENTIFICATION			
Operator	NOBLE ENERGY, INC	Well	Foose State A17-685
Field	WELD COUNTY (NOBLE NAD 83 GRID)	API/Legal	05-123-52156
Facility	SEC.18-T06N-R64W	Wellbore	Foose State A17-685 AWB
Slot	SLOT#01 Foose State A17-685 (2352'FSL & 949'FEL,SEC.18)		

WELLPATH DATA (183 stations) † = interpolated, ‡ = extrapolated station

MD [ft]	Inclination [°]	Azimuth [°]	TVD [ft]	Vert Sect [ft]	North [ft]	East [ft]	Latitude	Longitude	DLS [°/100ft]	Comments
4941.00	34.250	10.810	4624.84	487.86	1178.40	213.28	40.4883883	-104.5863197	0.23	
5036.00	34.170	12.130	4703.40	510.65	1230.74	223.90	40.4885317	-104.5862796	0.79	
5131.00	34.200	10.830	4781.99	533.43	1283.05	234.52	40.4886750	-104.5862394	0.77	
5225.00	34.120	11.310	4859.77	555.61	1334.84	244.66	40.4888168	-104.5862011	0.30	
5320.00	34.180	11.420	4938.39	578.27	1387.13	255.17	40.4889601	-104.5861614	0.09	
5415.00	34.440	10.910	5016.86	600.85	1439.66	265.53	40.4891040	-104.5861221	0.41	
5509.00	33.830	10.860	5094.67	622.87	1491.46	275.50	40.4892458	-104.5860844	0.65	
5604.00	33.610	10.890	5173.68	644.87	1543.25	285.45	40.4893877	-104.5860467	0.23	
5698.00	33.170	10.900	5252.17	666.47	1594.05	295.22	40.4895269	-104.5860097	0.47	
5793.00	33.820	10.750	5331.39	688.30	1645.55	305.07	40.4896679	-104.5859724	0.69	
5982.00	34.120	11.190	5488.14	732.51	1749.22	325.17	40.4899519	-104.5858963	0.21	
6077.00	34.270	10.940	5566.71	754.95	1801.62	335.41	40.4900954	-104.5858575	0.22	
6172.00	34.070	10.720	5645.31	777.17	1854.02	345.44	40.4902390	-104.5858195	0.25	
6266.00	34.130	11.220	5723.15	799.23	1905.76	355.47	40.4903807	-104.5857816	0.30	
6361.00	34.160	11.420	5801.77	821.86	1958.05	365.93	40.4905239	-104.5857420	0.12	
6456.00	34.220	10.960	5880.36	844.39	2010.42	376.29	40.4906674	-104.5857028	0.28	
6550.00	34.140	11.180	5958.12	866.59	2062.24	386.43	40.4908093	-104.5856644	0.16	
6645.00	34.170	10.820	6036.74	888.94	2114.60	396.61	40.4909527	-104.5856259	0.22	
6739.00	34.290	11.300	6114.45	911.16	2166.49	406.75	40.4910949	-104.5855875	0.31	
6834.00	34.470	11.300	6192.86	933.90	2219.10	417.27	40.4912390	-104.5855478	0.19	
6929.00	36.710	11.540	6270.11	957.44	2273.29	428.21	40.4913874	-104.5855064	2.36	
7023.00	36.980	28.670	6345.53	988.62	2325.76	447.45	40.4915309	-104.5854353	10.91	
7118.00	39.650	37.980	6420.13	1031.76	2374.77	479.84	40.4916645	-104.5853170	6.69	
7213.00	43.730	49.250	6491.16	1084.93	2420.18	523.45	40.4917879	-104.5851586	8.97	
7307.00	50.190	56.490	6555.32	1147.98	2461.39	578.26	40.4918994	-104.5849600	8.88	
7402.00	54.960	63.530	6613.09	1220.37	2498.92	643.59	40.4920006	-104.5847237	7.73	
7496.00	57.880	70.140	6665.11	1297.57	2529.63	715.55	40.4920828	-104.5844639	6.63	
7591.00	67.380	74.710	6708.75	1381.63	2554.92	795.90	40.4921500	-104.5841741	10.87	
7686.00	72.070	78.310	6741.67	1470.70	2575.66	882.52	40.4922045	-104.5838619	6.08	
7780.00	79.220	78.010	6764.96	1561.65	2594.34	971.59	40.4922532	-104.5835410	7.61	
7875.00	82.660	85.350	6779.94	1654.96	2607.87	1064.34	40.4922877	-104.5832071	8.44	
7937.62†	87.643	85.998	6785.23	1716.49	2612.58	1126.54	40.4922989	-104.5829833	8.02	Cross 200' Hardline (362'FNL & 200'FWL, SEC. 17)
7940.00†	87.833	86.022	6785.33	1718.83	2612.74	1128.91	40.4922992	-104.5829748	8.02	Shallowest MD for Perf
7970.00	90.220	86.330	6785.84	1748.37	2614.74	1158.84	40.4923039	-104.5828671	8.02	
8065.00	89.910	88.530	6785.73	1841.55	2619.00	1253.74	40.4923129	-104.5825258	2.34	
8159.00	90.000	88.580	6785.80	1933.38	2621.37	1347.71	40.4923167	-104.5821878	0.11	
8254.00	89.880	88.550	6785.90	2026.19	2623.75	1442.68	40.4923206	-104.5818463	0.13	
8349.00	90.120	89.580	6785.90	2118.81	2625.30	1537.66	40.4923221	-104.5815048	1.11	
8444.00	90.060	89.800	6785.75	2211.19	2625.81	1632.66	40.4923208	-104.5811632	0.24	
8538.00	89.660	89.620	6785.98	2302.60	2626.29	1726.66	40.4923194	-104.5808253	0.47	
8633.00	89.970	89.680	6786.29	2395.00	2626.87	1821.66	40.4923183	-104.5804837	0.33	
8728.00	89.970	89.680	6786.34	2487.39	2627.40	1916.65	40.4923171	-104.5801422	0.00	
8822.00	89.970	89.690	6786.39	2578.80	2627.92	2010.65	40.4923158	-104.5798042	0.01	
8917.00	89.940	89.370	6786.46	2671.25	2628.70	2105.65	40.4923153	-104.5794627	0.34	
9012.00	89.880	89.660	6786.61	2763.70	2629.50	2200.65	40.4923148	-104.5791211	0.31	

REFERENCE WELLPATH IDENTIFICATION			
Operator	NOBLE ENERGY, INC	Well	Foose State A17-685
Field	WELD COUNTY (NOBLE NAD 83 GRID)	API/Legal	05-123-52156
Facility	SEC.18-T06N-R64W	Wellbore	Foose State A17-685 AWB
Slot	SLOT#01 Foose State A17-685 (2352'FSL & 949'FEL,SEC.18)		

WELLPATH DATA (183 stations)

MD [ft]	Inclination [°]	Azimuth [°]	TVD [ft]	Vert Sect [ft]	North [ft]	East [ft]	Latitude	Longitude	DLS [°/100ft]	Comments
9107.00	89.880	89.510	6786.81	2856.13	2630.19	2295.64	40.4923139	-104.5787796	0.16	
9201.00	89.850	89.660	6787.03	2947.58	2630.87	2389.64	40.4923131	-104.5784416	0.16	
9296.00	89.780	89.720	6787.34	3039.97	2631.38	2484.64	40.4923118	-104.5781001	0.10	
9486.00	89.720	89.630	6788.17	3224.75	2632.46	2674.63	40.4923094	-104.5774170	0.06	
9580.00	89.750	89.640	6788.60	3316.18	2633.06	2768.63	40.4923083	-104.5770790	0.03	
9675.00	89.750	89.630	6789.02	3408.59	2633.67	2863.63	40.4923073	-104.5767375	0.01	
9770.00	89.850	89.650	6789.35	3500.99	2634.26	2958.63	40.4923062	-104.5763959	0.11	
9864.00	89.780	89.720	6789.65	3592.41	2634.78	3052.62	40.4923049	-104.5760580	0.11	
9959.00	89.750	89.630	6790.04	3684.80	2635.32	3147.62	40.4923037	-104.5757164	0.10	
10054.00	89.750	89.630	6790.46	3777.21	2635.93	3242.62	40.4923027	-104.5753749	0.00	
10148.00	90.060	89.780	6790.61	3868.62	2636.42	3336.62	40.4923013	-104.5750369	0.37	
10243.00	90.000	89.770	6790.56	3960.97	2636.79	3431.62	40.4922996	-104.5746954	0.06	
10337.00	89.850	89.730	6790.69	4052.36	2637.20	3525.61	40.4922980	-104.5743574	0.17	
10432.00	89.940	89.750	6790.86	4144.73	2637.63	3620.61	40.4922965	-104.5740159	0.10	
10527.00	89.850	89.730	6791.03	4237.09	2638.06	3715.61	40.4922949	-104.5736744	0.10	
10622.00	90.150	89.640	6791.03	4329.48	2638.58	3810.61	40.4922937	-104.5733328	0.33	
10716.00	90.030	89.850	6790.89	4420.87	2639.00	3904.61	40.4922921	-104.5729949	0.26	
10811.00	90.180	89.660	6790.71	4513.23	2639.41	3999.61	40.4922905	-104.5726533	0.25	
10906.00	89.880	89.810	6790.66	4605.60	2639.85	4094.61	40.4922890	-104.5723118	0.35	
11000.00	89.880	89.810	6790.86	4696.97	2640.16	4188.61	40.4922871	-104.5719738	0.00	
11095.00	89.880	89.650	6791.06	4789.34	2640.61	4283.61	40.4922856	-104.5716323	0.17	
11190.00	90.120	89.390	6791.06	4881.79	2641.40	4378.60	40.4922851	-104.5712907	0.37	
11284.00	90.180	89.810	6790.81	4973.24	2642.06	4472.60	40.4922842	-104.5709528	0.45	
11379.00	89.780	90.030	6790.85	5065.53	2642.19	4567.60	40.4922818	-104.5706112	0.48	
11474.00	89.970	89.740	6791.05	5157.84	2642.38	4662.60	40.4922796	-104.5702697	0.36	
11568.00	89.970	89.750	6791.10	5249.24	2642.80	4756.60	40.4922780	-104.5699317	0.01	
11663.00	90.090	89.770	6791.05	5341.60	2643.20	4851.60	40.4922764	-104.5695902	0.13	
11758.00	89.970	89.590	6791.00	5433.99	2643.73	4946.59	40.4922751	-104.5692486	0.23	
11852.00	89.820	89.710	6791.18	5525.41	2644.30	5040.59	40.4922740	-104.5689107	0.20	
11947.00	90.120	89.620	6791.22	5617.81	2644.86	5135.59	40.4922728	-104.5685691	0.33	
12042.00	89.690	89.680	6791.38	5710.21	2645.44	5230.59	40.4922716	-104.5682276	0.46	
12137.00	89.970	89.750	6791.66	5802.59	2645.91	5325.59	40.4922702	-104.5678860	0.30	
12231.00	90.150	89.550	6791.57	5894.02	2646.49	5419.59	40.4922691	-104.5675441	0.29	
12326.00	90.220	89.590	6791.26	5986.45	2647.20	5514.58	40.4922683	-104.5672065	0.08	
12420.00	89.910	90.060	6791.15	6077.81	2647.49	5608.58	40.4922663	-104.5668686	0.60	
12515.00	89.820	89.700	6791.38	6170.12	2647.69	5703.58	40.4922641	-104.5665271	0.39	
12610.00	89.720	89.760	6791.76	6262.49	2648.13	5798.58	40.4922626	-104.5661855	0.12	
12705.00	89.750	89.950	6792.20	6354.81	2648.37	5893.58	40.4922605	-104.5658440	0.20	
12799.00	89.820	90.030	6792.55	6446.11	2648.39	5987.58	40.4922579	-104.5655060	0.11	
12894.00	90.650	89.850	6792.16	6538.40	2648.49	6082.58	40.4922554	-104.5651645	0.89	
12989.00	90.310	89.910	6791.36	6630.70	2648.69	6177.57	40.4922532	-104.5648230	0.36	
13083.00	89.850	90.040	6791.23	6722.01	2648.73	6271.57	40.4922506	-104.5644850	0.51	
13178.00	90.150	89.950	6791.23	6814.27	2648.74	6366.57	40.4922478	-104.5641435	0.33	
13272.00	89.880	90.120	6791.21	6905.55	2648.68	6460.57	40.4922450	-104.5638056	0.34	
13367.00	90.120	89.850	6791.21	6997.82	2648.71	6555.57	40.4922423	-104.5634640	0.38	

REFERENCE WELLPATH IDENTIFICATION			
Operator	NOBLE ENERGY, INC	Well	Foose State A17-685
Field	WELD COUNTY (NOBLE NAD 83 GRID)	API/Legal	05-123-52156
Facility	SEC.18-T06N-R64W	Wellbore	Foose State A17-685 AWB
Slot	SLOT#01 Foose State A17-685 (2352'FSL & 949'FEL,SEC.18)		

WELLPATH DATA (183 stations)

MD [ft]	Inclination [°]	Azimuth [°]	TVD [ft]	Vert Sect [ft]	North [ft]	East [ft]	Latitude	Longitude	DLS [°/100ft]	Comments
13462.00	90.220	90.130	6790.93	7090.09	2648.72	6650.57	40.4922396	-104.5631225	0.31	
13556.00	89.940	89.970	6790.80	7181.37	2648.64	6744.57	40.4922366	-104.5627846	0.34	
13651.00	90.060	89.440	6790.80	7273.75	2649.13	6839.57	40.4922352	-104.5624430	0.57	
13746.00	89.630	89.480	6791.05	7366.22	2650.02	6934.56	40.4922349	-104.5621015	0.45	
13841.00	89.820	90.340	6791.51	7458.52	2650.17	7029.56	40.4922326	-104.5617599	0.93	
13935.00	89.880	87.680	6791.75	7550.18	2651.80	7123.54	40.4922343	-104.5614220	2.83	
14030.00	90.060	87.630	6791.80	7643.29	2655.68	7218.46	40.4922422	-104.5610806	0.20	
14125.00	89.910	87.920	6791.83	7736.36	2659.37	7313.39	40.4922496	-104.5607392	0.34	
14219.00	89.910	87.830	6791.98	7828.43	2662.86	7407.32	40.4922564	-104.5604014	0.10	
14314.00	89.910	88.250	6792.13	7921.41	2666.11	7502.27	40.4922626	-104.5600599	0.44	
14409.00	89.940	89.930	6792.25	8014.38	2669.27	7597.21	40.4922685	-104.5597185	0.34	
14503.00	90.030	87.870	6792.27	8106.43	2672.72	7691.15	40.4922752	-104.5593806	0.12	
14693.00	89.880	87.660	6792.42	8292.59	2680.13	7881.01	40.4922900	-104.5586978	0.14	
14787.00	90.180	87.890	6792.37	8384.68	2683.78	7974.93	40.4922973	-104.5583600	0.40	
14882.00	89.820	88.690	6792.37	8477.58	2686.61	8069.89	40.4923023	-104.5580185	0.92	
14976.00	90.060	88.900	6792.47	8569.32	2688.59	8163.87	40.4923050	-104.5576805	0.34	
15071.00	89.940	89.030	6792.47	8661.98	2690.30	8258.85	40.4923069	-104.5573390	0.19	
15166.00	89.540	89.170	6792.90	8754.59	2691.80	8353.84	40.4923082	-104.5569974	0.45	
15261.00	90.060	88.660	6793.24	8847.26	2693.60	8448.82	40.4923104	-104.5566559	0.77	
15355.00	90.000	89.120	6793.19	8938.97	2695.42	8542.81	40.4923127	-104.5563180	0.49	
15450.00	90.150	88.930	6793.06	9031.61	2697.03	8637.79	40.4923143	-104.5559764	0.25	
15545.00	90.120	88.900	6792.84	9124.29	2698.83	8732.77	40.4923165	-104.5556349	0.04	
15639.00	90.000	89.020	6792.74	9215.97	2700.54	8826.76	40.4923184	-104.5552969	0.18	
15734.00	89.910	88.920	6792.81	9308.63	2702.25	8921.74	40.4923203	-104.5549554	0.14	
15829.00	90.220	89.010	6792.71	9401.29	2703.96	9016.73	40.4923223	-104.5546138	0.34	
15924.00	89.940	89.030	6792.57	9493.93	2705.59	9111.71	40.4923239	-104.5542723	0.30	
16018.00	90.220	88.770	6792.44	9585.63	2707.39	9205.70	40.4923261	-104.5539344	0.41	
16113.00	90.550	88.790	6791.80	9678.36	2709.41	9300.67	40.4923289	-104.5535928	0.35	
16208.00	89.600	88.700	6791.68	9771.09	2711.49	9395.65	40.4923318	-104.5532513	1.00	
16302.00	89.910	88.940	6792.08	9862.83	2713.43	9489.63	40.4923344	-104.5529134	0.42	
16397.00	91.480	88.880	6790.93	9955.50	2715.24	9584.60	40.4923366	-104.5525719	1.65	
16492.00	90.120	88.740	6789.60	10048.20	2717.21	9679.57	40.4923392	-104.5522304	1.44	
16586.00	90.280	88.690	6789.28	10139.97	2719.32	9773.54	40.4923422	-104.5518924	0.18	
16681.00	90.000	88.790	6789.04	10232.71	2721.41	9868.52	40.4923452	-104.5515509	0.31	
16776.00	90.090	88.640	6788.97	10325.46	2723.54	9963.50	40.4923482	-104.5512094	0.18	
16871.00	90.060	88.730	6788.84	10418.22	2725.72	10058.47	40.4923514	-104.5508678	0.10	
16965.00	90.220	88.850	6788.61	10509.97	2727.70	10152.45	40.4923541	-104.5505299	0.21	
17155.00	90.150	88.750	6788.00	10695.40	2731.68	10342.41	40.4923595	-104.5498468	0.06	
17250.00	90.250	88.840	6787.67	10788.12	2733.68	10437.39	40.4923621	-104.5495053	0.14	
17344.00	90.030	88.790	6787.44	10879.86	2735.62	10531.37	40.4923647	-104.5491674	0.24	
17439.00	90.090	88.800	6787.34	10972.58	2737.62	10626.34	40.4923674	-104.5488258	0.06	
17628.00	90.310	88.870	6786.68	11157.02	2741.46	10815.30	40.4923724	-104.5481464	0.12	
17723.00	90.220	88.840	6786.24	11249.71	2743.36	10910.28	40.4923748	-104.5478048	0.10	
17817.00	90.030	88.640	6786.04	11341.48	2745.43	11004.26	40.4923777	-104.5474669	0.29	
17912.00	90.120	88.650	6785.91	11434.25	2747.68	11099.23	40.4923811	-104.5471254	0.10	

REFERENCE WELLPATH IDENTIFICATION

Operator	NOBLE ENERGY, INC	Well	Foose State A17-685
Field	WELD COUNTY (NOBLE NAD 83 GRID)	API/Legal	05-123-52156
Facility	SEC.18-T06N-R64W	Wellbore	Foose State A17-685 AWB
Slot	SLOT#01 Foose State A17-685 (2352'FSL & 949'FEL,SEC.18)		

WELLPATH DATA (183 stations) † = interpolated, ‡ = extrapolated station

MD [ft]	Inclination [°]	Azimuth [°]	TVD [ft]	Vert Sect [ft]	North [ft]	East [ft]	Latitude	Longitude	DLS [°/100ft]	Comments
18007.00	90.030	88.710	6785.79	11527.01	2749.86	11194.21	40.4923843	-104.5467838	0.11	
18063.00	90.150	88.570	6785.70	11581.70	2751.19	11250.19	40.4923863	-104.5465825	0.33	Last BH MWD Survey
18088.00‡	90.150	88.570	6785.63	11606.12	2751.82	11275.19	40.4923872	-104.5464926	0.00	Projection to Bit (364'FNL & 200'FEL,SEC. 16)

TARGETS

Name	TVD [ft]	North [ft]	East [ft]	Grid East [US ft]	Grid North [US ft]	Latitude	Longitude	Shape
OGDP 1 SEC.16-T06N-R64W	-41.00	7371.66	460.85	3254380.72	1428262.61	40.5053800	-104.5852000	polygon
2D Polygon: dimensions not calculated								
OGDP 1 SEC.17-T06N-R64W	-41.00	7371.66	460.85	3254380.72	1428262.61	40.5053800	-104.5852000	polygon
2D Polygon: dimensions not calculated								
OGDP 1 SEC.18-T06N-R64W	-41.00	7371.66	460.85	3254380.72	1428262.61	40.5053800	-104.5852000	polygon
2D Polygon: dimensions not calculated								
Foose State A17-685 BHL Rev-2 (350'FNL & 200'FEL,SEC.16)	6786.00	2765.76	11275.58	3265195.05	1423656.88	40.4924255	-104.5464907	point
Foose State A17-685 IP 1	6786.00	2663.99	6271.06	3260190.72	1423555.12	40.4922925	-104.5644863	point
Foose State A17-685 LP Rev-2 (350'FNL & 200'FWL,SEC.17)	6786.00	2624.27	1126.54	3255046.39	1423515.39	40.4923309	-104.5829828	point
DP 135 Hardlines (300'FNL/FSL&200'FEL/FWL)	6999.00	0.00	0.00	3253919.89	1420891.22	40.4851600	-104.5871300	polygon
2D Polygon: dimensions not calculated								

WELLPATH COMPOSITION - Ref Wellbore: Foose State A17-685 AWB Ref Wellpath: Foose State A17-685 AWP

Start MD [ft]	End MD [ft]	Positional Uncertainty Model	Log Name/Comment	Wellbore	Survey Date
29.00	1944.00	OWSG MWD rev2 (MS+IFR1)	13.5" EVO Surface OWSG MWD rev2 (MS+IFR1) <161'-1944'>	Foose State A17-685 AWB	10/27/2023
1944.00	18088.00	OWSG MWD rev2 (MS+IFR1)	8.5" Lucida OWSG MWD Rev2 (MS+IFR1) <2102'-18063'>	Foose State A17-685 AWB	11/27/2023

REFERENCE WELLPATH IDENTIFICATION			
Operator	NOBLE ENERGY, INC	Well	Foose State A17-685
Field	WELD COUNTY (NOBLE NAD 83 GRID)	API/Legal	05-123-52156
Facility	SEC.18-T06N-R64W	Wellbore	Foose State A17-685 AWB
Slot	SLOT#01 Foose State A17-685 (2352'FSL & 949'FEL,SEC.18)		

WELLPATH COMMENTS				
MD [ft]	Inclination [°]	Azimuth [°]	TVD [ft]	Comment
161.00	0.200	296.330	161.00	First BH MWD Survey
7937.62	87.643	85.998	6785.23	Cross 200' Hardline (362'FNL & 200'FWL,SEC. 17)
7940.00	87.833	86.022	6785.33	Shallowest MD for Perf
18063.00	90.150	88.570	6785.70	Last BH MWD Survey
18088.00	90.150	88.570	6785.63	Projection to Bit (364'FNL & 200'FEL,SEC. 16)