

# NOBLE ENERGY, INC

Location: COLORADO Slot: SLOT#08 Foose State A17-618 (2347'FSL & 687'FEL, SEC. 18)

Field: WELD COUNTY (NOBLE NAD 83 GRID) Well: Foose State A17-618

Facility: SEC.18-T06N-R64W Wellbore: Foose State A17-618 PWB



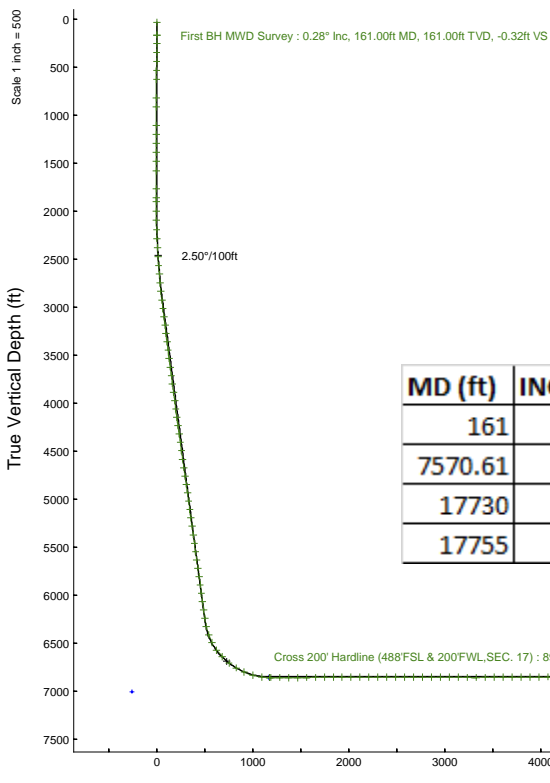
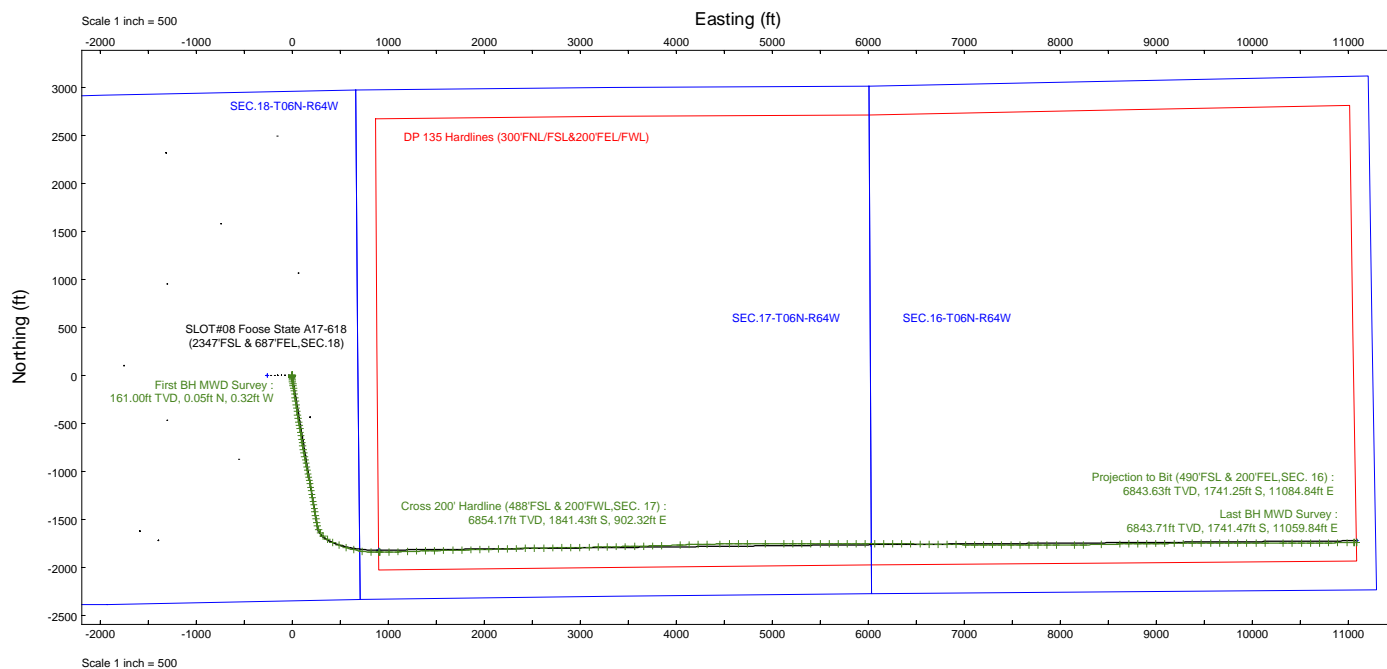
Plot reference wellpath is Foose State A17-618 (REV-C.0) PWP	Grid System: NAD83 / Lambert Colorado SP, Northern Zone (501), US feet
True vertical depths are referenced to Pten 268 (4705'GL+29'KB@4734'RKB) (RKB)	North Reference: Grid north
Reference wellpath measured depths are referenced to Pten 268 (4705'GL+29'KB@4734'RKB) (RKB)	Scale: True distance
Pten 268 (4705'GL+29'KB@4734'RKB) (RKB) to Mean Sea Level: 4734 feet	Coordinates are in feet referenced to Slot
Mean Sea Level to Ground level (At Slot: SLOT#08 Foose State A17-618 (2347'FSL & 687'FEL, SEC. 18)): 0 feet	Depths are in feet
Offset wellpath MDs are referenced to each path's default MD datum	Created by: marsam01 on 2023-12-29; Database: WA_Driver

Location Information						
Facility Name			Grid East (US ft)	Grid North (US ft)	Latitude	Longitude
SEC.18-T06N-R64W			3253919.886	1420891.224	40°29'6.5760"N	104°35'13.6680"W
Slot	Local N (ft)	Local E (ft)	Grid East (US ft)	Grid North (US ft)	Latitude	Longitude
SLOT#08 Foose State A17-618 (2347'FSL & 687'FEL, SEC. 18)	-95	261.90	3254181.381	1420890.274	40°29'6.5400"N	104°35'10.2840"W

Pten 268 (4705'GL+29'KB@4734'RKB) (RKB) to Ground level (At Slot: SLOT#08 Foose State A17-618 (2347'FSL & 687'FEL, SEC. 18))	4734ft
Mean Sea Level to Ground level (At Slot: SLOT#08 Foose State A17-618 (2347'FSL & 687'FEL, SEC. 18))	0ft
Pten 268 (4705'GL+29'KB@4734'RKB) (RKB) to Mean Sea Level	4734ft



MD (ft)	INC (deg)	AZ (deg)	TVD (ft)	Local N (ft)	Local E (ft)	Comment
161	0.28	278.95	161	0.05	-0.32	First BH MWD Survey
7570.61	89.086	88.722	6854.17	-1841.43	902.32	Cross 200' Hardline (488'FSL & 200'FWL, SEC. 17)
17730	90.18	89.5	6843.71	-1741.47	11059.84	Last BH MWD Survey
17755	90.18	89.5	6843.63	-1741.25	11084.84	Projection to Bit (490'FSL & 200'FEL, SEC. 16)

Last BH MWD Survey : 90.18° Inc, 17730.00ft MD, 6843.71ft TVD, 11196.08ft VS  
 Projection to Bit (490'FSL & 200'FEL, SEC. 16) : 90.18° Inc, 17755.00ft MD, 6843.63ft TVD, 11220.75ft VS

Vertical Section (ft)  
 Azimuth 98.83° with reference 0.00 N, 0.00 E

Scale 1 inch = 500

## REFERENCE WELLPATH IDENTIFICATION

Operator	NOBLE ENERGY, INC	Well	Foose State A17-618
Field	WELD COUNTY (NOBLE NAD 83 GRID)	API/Legal	05-123-52163
Facility	SEC.18-T06N-R64W	Wellbore	Foose State A17-618 AWB
Slot	SLOT#08 Foose State A17-618 (2347'FSL & 687'FEL,SEC.18)		

## REPORT SETUP INFORMATION

Projection System	NAD83 / Lambert Colorado SP, Northern Zone (501), US feet	Software System	WellArchitect® 6.0
North Reference	Grid	User	Martsam01
Scale	0.999965	Report Generated	12/27/2023 at 3:38:13 PM
Convergence at slot	0.59° East	Database	WA_Denver

## WELLPATH LOCATION

	Local coordinates		Grid coordinates		Geographic coordinates	
	North[ft]	East[ft]	Easting[US ft]	Northing[US ft]	Latitude	Longitude
Slot Location	-0.95	261.50	3254181.38	1420890.27	40.4851500°	-104.5861900°
Facility Reference Pt			3253919.89	1420891.22	40.4851600°	-104.5871300°
Field Reference Pt			3000000.00	4454105.15	48.7761986°	-105.5000000°

## WELLPATH DATUM

Calculation method	Minimum curvature	Pten 268 (4705'GL+29'KB@4734'RKB) (RKB) to Facility Vertical Datum	4734.00ft
Horizontal Reference Pt	Slot	Pten 268 (4705'GL+29'KB@4734'RKB) (RKB) to Mean Sea Level	4734.00ft
Vertical Reference Pt	Pten 268 (4705'GL+29'KB@4734'RKB) (RKB)	Pten 268 (4705'GL+29'KB@4734'RKB) (RKB) to Ground Level at Slot (SLOT#08 Foose State A17-618 (2347'FSL & 687'FEL,SEC.18))	4734.00ft
MD Reference Pt	Pten 268 (4705'GL+29'KB@4734'RKB) (RKB)	Section Origin	N 0.00, E 0.00 ft
Field Vertical Reference	Mean Sea Level	Section Azimuth	98.83°

REFERENCE WELLPATH IDENTIFICATION			
Operator	NOBLE ENERGY, INC	Well	Foose State A17-618
Field	WELD COUNTY (NOBLE NAD 83 GRID)	API/Legal	05-123-52163
Facility	SEC.18-T06N-R64W	Wellbore	Foose State A17-618 AWB
Slot	SLOT#08 Foose State A17-618 (2347'FSL & 687'FEL,SEC.18)		

**WELLPATH DATA (182 stations)** † = interpolated, ‡ = extrapolated station

MD [ft]	Inclination [°]	Azimuth [°]	TVD [ft]	Vert Sect [ft]	North [ft]	East [ft]	Latitude	Longitude	DLS [°/100ft]	Comments
0.00†	0.000	278.950	0.00	0.00	0.00	0.00	40.4851500	-104.5861900	0.00	
29.00	0.000	278.950	29.00	0.00	0.00	0.00	40.4851500	-104.5861900	0.00	
161.00	0.280	278.950	161.00	-0.32	0.05	-0.32	40.4851501	-104.5861911	0.21	First BH MWD Survey
252.00	0.160	264.050	252.00	-0.67	0.07	-0.66	40.4851502	-104.5861924	0.15	
342.00	0.290	257.010	342.00	-1.00	0.01	-1.01	40.4851500	-104.5861936	0.15	
436.00	0.290	293.220	436.00	-1.45	0.05	-1.46	40.4851502	-104.5861953	0.19	
531.00	0.400	258.670	531.00	-2.00	0.08	-2.01	40.4851503	-104.5861972	0.24	
626.00	0.450	251.510	625.99	-2.64	-0.11	-2.69	40.4851498	-104.5861997	0.08	
816.00	0.510	249.450	815.99	-4.04	-0.64	-4.19	40.4851484	-104.5862051	0.03	
911.00	0.530	226.830	910.98	-4.68	-1.09	-4.90	40.4851472	-104.5862077	0.22	
1101.00	0.450	231.010	1100.98	-5.72	-2.16	-6.12	40.4851442	-104.5862121	0.05	
1196.00	0.410	208.080	1195.97	-6.08	-2.69	-6.57	40.4851428	-104.5862137	0.18	
1291.00	0.370	221.010	1290.97	-6.36	-3.23	-6.93	40.4851413	-104.5862150	0.10	
1385.00	0.300	207.930	1384.97	-6.60	-3.67	-7.25	40.4851401	-104.5862162	0.11	
1480.00	0.250	191.340	1479.97	-6.69	-4.09	-7.41	40.4851390	-104.5862168	0.10	
1575.00	0.320	172.450	1574.97	-6.62	-4.56	-7.41	40.4851377	-104.5862168	0.12	
1765.00	0.120	5.170	1764.97	-6.49	-4.89	-7.32	40.4851368	-104.5862165	0.23	
1860.00	0.210	151.070	1859.97	-6.39	-4.94	-7.23	40.4851366	-104.5862162	0.33	
1898.00	0.130	326.060	1897.97	-6.37	-4.97	-7.22	40.4851366	-104.5862161	0.89	
1999.00	2.100	168.570	1998.94	-5.81	-6.69	-6.92	40.4851318	-104.5862151	2.20	
2094.00	4.540	169.370	2093.78	-3.96	-12.09	-5.88	40.4851170	-104.5862116	2.57	
2189.00	6.600	169.710	2188.32	-0.91	-21.16	-4.21	40.4850921	-104.5862059	2.17	
2283.00	8.190	170.210	2281.54	2.99	-33.07	-2.11	40.4850593	-104.5861988	1.69	
2378.00	9.580	170.120	2375.40	7.69	-47.53	0.40	40.4850195	-104.5861903	1.46	
2473.00	11.110	171.190	2468.85	13.00	-64.36	3.16	40.4849733	-104.5861810	1.62	
2567.00	12.880	170.580	2560.79	19.02	-83.65	6.26	40.4849202	-104.5861706	1.89	
2662.00	14.750	170.870	2653.04	26.07	-106.04	9.91	40.4848587	-104.5861583	1.97	
2756.00	16.810	170.980	2743.49	33.92	-131.28	13.94	40.4847893	-104.5861447	2.19	
2851.00	20.550	171.420	2833.47	43.13	-161.34	18.58	40.4847066	-104.5861292	3.94	
2946.00	22.660	171.770	2921.79	53.48	-195.94	23.69	40.4846115	-104.5861121	2.23	
3040.00	22.830	171.700	3008.48	64.17	-231.91	28.92	40.4845127	-104.5860946	0.18	
3135.00	22.850	171.420	3096.04	75.11	-268.39	34.33	40.4844124	-104.5860765	0.12	
3230.00	22.590	171.340	3183.66	86.11	-304.66	39.83	40.4843127	-104.5860581	0.28	
3324.00	22.620	171.640	3270.44	96.88	-340.40	45.18	40.4842144	-104.5860402	0.13	
3419.00	22.220	171.520	3358.26	107.62	-376.24	50.48	40.4841159	-104.5860225	0.42	
3514.00	22.250	171.300	3446.20	118.39	-411.78	55.85	40.4840182	-104.5860045	0.09	
3608.00	22.550	171.060	3533.10	129.25	-447.18	61.34	40.4839209	-104.5859861	0.33	
3703.00	22.920	170.700	3620.72	140.56	-483.43	67.16	40.4838212	-104.5859665	0.42	
3798.00	22.860	170.510	3708.24	152.12	-519.89	73.19	40.4837210	-104.5859461	0.10	
3892.00	22.870	170.260	3794.86	163.67	-555.90	79.30	40.4836220	-104.5859256	0.10	
3987.00	22.830	170.610	3882.40	175.31	-592.28	85.43	40.4835220	-104.5859049	0.15	
4081.00	22.620	170.700	3969.10	186.64	-628.11	91.32	40.4834234	-104.5858850	0.23	
4176.00	22.550	170.400	4056.82	198.08	-664.10	97.31	40.4833245	-104.5858648	0.14	
4271.00	22.580	169.640	4144.55	209.83	-700.00	103.63	40.4832258	-104.5858434	0.31	
4365.00	22.550	169.600	4231.35	221.70	-735.48	110.13	40.4831282	-104.5858214	0.04	

REFERENCE WELLPATH IDENTIFICATION			
Operator	NOBLE ENERGY, INC	Well	Foose State A17-618
Field	WELD COUNTY (NOBLE NAD 83 GRID)	API/Legal	05-123-52163
Facility	SEC.18-T06N-R64W	Wellbore	Foose State A17-618 AWB
Slot	SLOT#08 Foose State A17-618 (2347'FSL & 687'FEL,SEC.18)		

**WELLPATH DATA (182 stations)** † = interpolated, ‡ = extrapolated station

MD [ft]	Inclination [°]	Azimuth [°]	TVD [ft]	Vert Sect [ft]	North [ft]	East [ft]	Latitude	Longitude	DLS ["/100ft]	Comments
4460.00	22.530	169.510	4319.09	233.72	-771.29	116.73	40.4830297	-104.5857990	0.04	
4555.00	22.760	169.690	4406.77	245.77	-807.27	123.33	40.4829308	-104.5857766	0.25	
4649.00	23.110	169.250	4493.34	257.91	-843.28	130.03	40.4828318	-104.5857538	0.41	
4744.00	23.050	169.460	4580.73	270.32	-879.88	136.91	40.4827311	-104.5857305	0.11	
4839.00	22.870	168.950	4668.21	282.77	-916.28	143.85	40.4826310	-104.5857069	0.28	
4933.00	22.620	169.110	4754.90	295.08	-951.96	150.76	40.4825329	-104.5856833	0.27	
5028.00	23.020	169.460	4842.46	307.40	-988.16	157.61	40.4824333	-104.5856600	0.44	
5122.00	23.010	169.720	4928.98	319.51	-1024.31	164.25	40.4823339	-104.5856375	0.11	
5217.00	22.990	168.810	5016.43	331.94	-1060.78	171.17	40.4822336	-104.5856140	0.37	
5312.00	21.030	169.020	5104.50	344.07	-1095.72	178.02	40.4821375	-104.5855907	2.06	
5406.00	21.730	167.740	5192.03	356.04	-1129.28	184.92	40.4820452	-104.5855671	0.89	
5501.00	22.520	170.120	5280.04	368.21	-1164.39	191.78	40.4819487	-104.5855438	1.26	
5596.00	23.010	170.090	5367.64	380.01	-1200.60	198.10	40.4818491	-104.5855224	0.52	
5690.00	23.060	170.020	5454.14	391.85	-1236.83	204.45	40.4817495	-104.5855009	0.06	
5785.00	23.690	169.930	5541.34	404.03	-1273.95	211.01	40.4816474	-104.5854787	0.66	
5879.00	23.580	170.410	5627.46	416.08	-1311.08	217.44	40.4815453	-104.5854570	0.24	
5974.00	23.540	170.180	5714.54	428.15	-1348.51	223.85	40.4814424	-104.5854353	0.11	
6069.00	23.680	169.950	5801.59	440.39	-1385.98	230.41	40.4813394	-104.5854131	0.18	
6163.00	23.230	170.110	5887.82	452.45	-1422.83	236.89	40.4812380	-104.5853912	0.48	
6258.00	23.180	170.390	5975.14	464.37	-1459.72	243.23	40.4811366	-104.5853698	0.13	
6353.00	22.570	169.640	6062.66	476.28	-1496.09	249.63	40.4810366	-104.5853481	0.71	
6447.00	23.120	169.640	6149.29	488.27	-1531.99	256.19	40.4809379	-104.5853259	0.59	
6542.00	22.490	170.010	6236.86	500.26	-1568.23	262.70	40.4808382	-104.5853038	0.68	
6636.00	23.960	157.690	6323.30	515.94	-1603.62	273.07	40.4807408	-104.5852679	5.39	
6731.00	26.220	146.740	6409.37	540.00	-1639.04	291.91	40.4806430	-104.5852014	5.43	
6826.00	31.730	134.160	6492.53	574.51	-1674.05	321.39	40.4805461	-104.5850968	8.62	
6920.00	39.510	122.180	6568.97	622.26	-1707.29	364.55	40.4804537	-104.5849429	11.09	
7015.00	45.440	115.460	6639.05	682.51	-1737.98	420.77	40.4803678	-104.5847419	7.85	
7110.00	52.110	111.650	6701.63	751.59	-1766.39	486.26	40.4802880	-104.5845076	7.64	
7204.00	59.300	107.170	6754.58	827.87	-1792.05	559.47	40.4802155	-104.5842454	8.60	
7299.00	65.560	103.290	6798.54	911.50	-1814.08	640.68	40.4801527	-104.5839543	7.52	
7394.00	74.640	98.670	6830.86	1000.64	-1830.97	728.27	40.4801039	-104.5836401	10.59	
7488.00	83.400	92.960	6848.76	1092.66	-1840.23	819.95	40.4800759	-104.5833109	11.06	
7570.61†	89.086	88.722	6854.17	1174.24	-1841.43	902.32	40.4800702	-104.5830149	8.58	Cross 200' Hardline (488'FSL & 200'FWL,SEC. 17)
7573.00†	89.251	88.600	6854.21	1176.59	-1841.38	904.71	40.4800703	-104.5830063	8.58	Shallowest MD for Perf
7583.00	89.940	88.090	6854.28	1186.43	-1841.09	914.71	40.4800708	-104.5829703	8.58	
7677.00	89.380	89.050	6854.84	1278.92	-1838.74	1008.67	40.4800746	-104.5826325	1.18	
7772.00	90.060	88.110	6855.30	1372.40	-1836.39	1103.64	40.4800784	-104.5822910	1.22	
7867.00	90.220	87.750	6855.07	1465.69	-1832.96	1198.58	40.4800851	-104.5819497	0.41	
7962.00	90.620	89.000	6854.37	1559.11	-1830.26	1293.54	40.4800898	-104.5816082	1.38	
8056.00	90.740	88.050	6853.26	1651.58	-1827.84	1387.50	40.4800937	-104.5812704	1.02	
8151.00	90.740	88.070	6852.03	1744.90	-1824.63	1482.44	40.4800999	-104.5809290	0.02	
8246.00	89.970	89.310	6851.44	1838.41	-1822.46	1577.41	40.4801031	-104.5805876	1.54	
8340.00	89.850	88.530	6851.59	1931.01	-1820.69	1671.39	40.4801053	-104.5802497	0.84	
8435.00	89.750	88.590	6851.92	2024.49	-1818.30	1766.36	40.4801092	-104.5799083	0.12	

REFERENCE WELLPATH IDENTIFICATION			
Operator	NOBLE ENERGY, INC	Well	Foose State A17-618
Field	WELD COUNTY (NOBLE NAD 83 GRID)	API/Legal	05-123-52163
Facility	SEC.18-T06N-R64W	Wellbore	Foose State A17-618 AWB
Slot	SLOT#08 Foose State A17-618 (2347'FSL & 687'FEL,SEC.18)		

## WELLPATH DATA (182 stations)

MD [ft]	Inclination [°]	Azimuth [°]	TVD [ft]	Vert Sect [ft]	North [ft]	East [ft]	Latitude	Longitude	DLS [°/100ft]	Comments
8530.00	89.970	88.430	6852.15	2117.95	-1815.83	1861.33	40.4801132	-104.5795668	0.29	
8625.00	89.720	88.100	6852.41	2211.34	-1812.95	1956.28	40.4801184	-104.5792254	0.44	
8719.00	89.910	88.950	6852.71	2303.83	-1810.53	2050.25	40.4801224	-104.5788875	0.93	
8814.00	90.340	88.010	6852.51	2397.28	-1808.01	2145.21	40.4801266	-104.5785461	1.09	
8909.00	90.150	88.700	6852.10	2490.69	-1805.28	2240.17	40.4801314	-104.5782047	0.75	
9004.00	90.340	88.660	6851.69	2584.21	-1803.10	2335.15	40.4801347	-104.5778632	0.20	
9098.00	89.910	89.270	6851.49	2676.82	-1801.40	2429.13	40.4801366	-104.5775253	0.79	
9193.00	90.090	88.830	6851.49	2770.44	-1799.82	2524.12	40.4801383	-104.5771838	0.50	
9288.00	90.150	89.020	6851.29	2864.02	-1798.04	2619.10	40.4801404	-104.5768424	0.21	
9382.00	89.080	88.800	6851.92	2956.61	-1796.25	2713.08	40.4801427	-104.5765045	1.16	
9477.00	89.970	89.770	6852.71	3050.29	-1795.07	2808.07	40.4801432	-104.5761630	1.39	
9572.00	90.150	89.330	6852.61	3144.05	-1794.32	2903.07	40.4801425	-104.5758215	0.50	
9666.00	88.830	88.890	6853.45	3236.69	-1792.86	2997.05	40.4801438	-104.5754837	1.48	
9761.00	90.490	88.340	6854.01	3330.18	-1790.57	3092.01	40.4801474	-104.5751422	1.84	
9856.00	90.310	88.470	6853.35	3423.61	-1787.92	3186.98	40.4801520	-104.5748008	0.23	
9951.00	90.770	88.340	6852.45	3517.04	-1785.28	3281.93	40.4801565	-104.5744594	0.50	
10045.00	89.720	89.610	6852.05	3609.65	-1783.60	3375.91	40.4801584	-104.5741215	1.75	
10140.00	90.490	88.600	6851.87	3703.29	-1782.11	3470.90	40.4801598	-104.5737800	1.34	
10234.00	90.490	88.590	6851.07	3795.79	-1779.81	3564.87	40.4801634	-104.5734422	0.01	
10329.00	90.620	88.640	6850.15	3889.28	-1777.51	3659.84	40.4801670	-104.5731007	0.15	
10424.00	90.430	89.150	6849.28	3982.85	-1775.68	3754.82	40.4801693	-104.5727592	0.57	
10518.00	91.110	87.870	6848.02	4075.32	-1773.24	3848.77	40.4801733	-104.5724214	1.54	
10708.00	90.090	87.740	6846.03	4261.80	-1765.96	4038.62	40.4801878	-104.5717388	0.54	
10802.00	91.080	88.000	6845.07	4354.08	-1762.46	4132.55	40.4801947	-104.5714010	1.09	
10897.00	90.680	88.810	6843.61	4447.50	-1759.82	4227.50	40.4801992	-104.5710596	0.95	
10992.00	90.580	88.770	6842.56	4541.04	-1757.82	4322.47	40.4802020	-104.5707182	0.11	
11126.00	91.230	89.450	6840.45	4673.10	-1755.73	4456.44	40.4802039	-104.5702365	0.70	
11221.00	89.910	89.220	6839.50	4766.79	-1754.63	4551.43	40.4802042	-104.5698951	1.41	
11316.00	90.060	88.880	6839.53	4860.41	-1753.06	4646.41	40.4802057	-104.5695536	0.39	
11410.00	89.480	90.820	6839.90	4953.25	-1752.81	4740.41	40.4802037	-104.5692157	2.15	
11600.00	89.480	89.920	6841.63	5141.18	-1754.04	4930.39	40.4801949	-104.5685329	0.47	
11789.00	90.180	89.140	6842.19	5327.69	-1752.49	5119.38	40.4801937	-104.5678535	0.55	
11884.00	89.660	89.970	6842.32	5421.45	-1751.75	5214.38	40.4801930	-104.5675120	1.03	
11978.00	89.910	89.640	6842.68	5514.28	-1751.43	5308.38	40.4801911	-104.5671741	0.44	
12073.00	89.850	90.100	6842.87	5608.12	-1751.21	5403.38	40.4801890	-104.5668327	0.49	
12168.00	90.310	90.870	6842.74	5702.12	-1752.02	5498.37	40.4801840	-104.5664912	0.94	
12262.00	90.250	90.220	6842.28	5795.14	-1752.91	5592.37	40.4801788	-104.5661534	0.69	
12357.00	89.350	89.800	6842.61	5889.01	-1752.93	5687.36	40.4801761	-104.5658119	1.05	
12451.00	91.510	89.830	6841.91	5981.84	-1752.62	5781.36	40.4801742	-104.5654741	2.30	
12545.00	90.310	90.320	6840.42	6074.73	-1752.75	5875.34	40.4801711	-104.5651363	1.38	
12640.00	90.740	90.030	6839.55	6168.65	-1753.04	5970.34	40.4801676	-104.5647948	0.55	
12735.00	89.630	89.880	6839.24	6262.51	-1752.96	6065.33	40.4801650	-104.5644533	1.18	
12829.00	89.690	90.220	6839.80	6355.41	-1753.05	6159.33	40.4801621	-104.5641155	0.37	
12924.00	89.540	90.750	6840.43	6449.40	-1753.85	6254.33	40.4801571	-104.5637741	0.58	
13019.00	90.220	90.930	6840.63	6543.48	-1755.24	6349.32	40.4801505	-104.5634327	0.74	

REFERENCE WELLPATH IDENTIFICATION			
Operator	NOBLE ENERGY, INC	Well	Foose State A17-618
Field	WELD COUNTY (NOBLE NAD 83 GRID)	API/Legal	05-123-52163
Facility	SEC.18-T06N-R64W	Wellbore	Foose State A17-618 AWB
Slot	SLOT#08 Foose State A17-618 (2347'FSL & 687'FEL,SEC.18)		

### WELLPATH DATA (182 stations)

MD [ft]	Inclination [°]	Azimuth [°]	TVD [ft]	Vert Sect [ft]	North [ft]	East [ft]	Latitude	Longitude	DLS [°/100ft]	Comments
13113.00	90.030	90.150	6840.43	6636.49	-1756.13	6443.31	40.4801454	-104.5630948	0.85	
13208.00	90.490	91.180	6840.00	6730.53	-1757.23	6538.30	40.4801396	-104.5627534	1.19	
13303.00	89.380	90.370	6840.11	6824.59	-1758.52	6633.29	40.4801333	-104.5624121	1.45	
13397.00	89.540	90.490	6840.99	6917.58	-1759.22	6727.28	40.4801287	-104.5620742	0.21	
13492.00	89.780	91.030	6841.55	7011.63	-1760.48	6822.27	40.4801224	-104.5617328	0.62	
13587.00	89.010	90.830	6842.56	7105.73	-1762.02	6917.26	40.4801154	-104.5613915	0.84	
13682.00	89.450	90.550	6843.83	7199.76	-1763.17	7012.24	40.4801095	-104.5610501	0.55	
13776.00	90.770	89.620	6843.65	7292.67	-1763.31	7106.24	40.4801064	-104.5607123	1.72	
13871.00	89.230	90.480	6843.65	7386.55	-1763.39	7201.23	40.4801034	-104.5603708	1.86	
13965.00	89.010	90.020	6845.10	7479.49	-1763.80	7295.22	40.4800996	-104.5600330	0.54	
14060.00	89.450	90.700	6846.37	7573.44	-1764.40	7390.21	40.4800952	-104.5596916	0.85	
14155.00	89.720	90.300	6847.06	7667.44	-1765.23	7485.20	40.4800901	-104.5593502	0.51	
14250.00	90.370	90.470	6846.99	7761.41	-1765.86	7580.20	40.4800856	-104.5590087	0.71	
14344.00	90.120	90.330	6846.59	7854.39	-1766.52	7674.20	40.4800811	-104.5586709	0.30	
14439.00	90.430	90.250	6846.13	7948.34	-1767.00	7769.19	40.4800770	-104.5583294	0.34	
14534.00	91.080	90.260	6844.88	8042.27	-1767.42	7864.18	40.4800731	-104.5579880	0.68	
14628.00	90.920	90.050	6843.24	8135.18	-1767.68	7958.17	40.4800696	-104.5576502	0.28	
14815.00	90.310	89.080	6841.23	8319.73	-1766.26	8145.15	40.4800681	-104.5569781	0.61	
14909.00	91.080	88.700	6840.09	8412.31	-1764.44	8239.12	40.4800703	-104.5566402	0.91	
15098.00	89.290	88.750	6839.48	8598.37	-1760.23	8428.07	40.4800763	-104.5559609	0.95	
15288.00	89.320	88.710	6841.78	8785.41	-1756.02	8618.01	40.4800823	-104.5552780	0.03	
15382.00	89.510	88.830	6842.74	8877.96	-1754.00	8711.98	40.4800851	-104.5549402	0.24	
15477.00	89.320	88.940	6843.71	8971.53	-1752.15	8806.96	40.4800874	-104.5545987	0.23	
15572.00	89.290	89.660	6844.87	9065.21	-1750.99	8901.94	40.4800878	-104.5542572	0.76	
15667.00	89.380	89.680	6845.97	9158.99	-1750.45	8996.94	40.4800866	-104.5539158	0.10	
15761.00	89.540	89.630	6846.86	9251.79	-1749.88	9090.93	40.4800854	-104.5535779	0.18	
15856.00	89.540	89.740	6847.62	9345.58	-1749.36	9185.93	40.4800840	-104.5532364	0.12	
15951.00	89.260	89.840	6848.61	9439.39	-1749.01	9280.92	40.4800822	-104.5528949	0.31	
16045.00	89.320	89.630	6849.78	9532.20	-1748.58	9374.91	40.4800806	-104.5525571	0.23	
16140.00	89.450	89.660	6850.80	9625.98	-1747.99	9469.90	40.4800794	-104.5522156	0.14	
16235.00	89.110	89.630	6851.99	9719.76	-1747.40	9564.89	40.4800783	-104.5518742	0.36	
16329.00	90.860	90.030	6852.02	9812.60	-1747.12	9658.89	40.4800763	-104.5515363	1.91	
16424.00	89.820	89.650	6851.45	9906.43	-1746.85	9753.89	40.4800742	-104.5511948	1.17	
16519.00	90.060	89.790	6851.55	10000.23	-1746.39	9848.89	40.4800727	-104.5508533	0.29	
16614.00	90.950	89.960	6850.71	10094.07	-1746.18	9943.88	40.4800705	-104.5505119	0.95	
16708.00	90.680	90.040	6849.38	10186.94	-1746.18	10037.87	40.4800677	-104.5501740	0.30	
16803.00	89.880	89.580	6848.91	10280.77	-1745.87	10132.87	40.4800658	-104.5498325	0.97	
16993.00	90.340	89.880	6848.55	10468.37	-1744.97	10322.87	40.4800627	-104.549496	0.29	
17087.00	90.340	89.950	6847.99	10561.24	-1744.83	10416.86	40.4800603	-104.5488117	0.07	
17182.00	90.400	89.900	6847.38	10655.09	-1744.71	10511.86	40.4800578	-104.5484702	0.08	
17277.00	90.550	89.780	6846.59	10748.92	-1744.44	10606.86	40.4800557	-104.5481288	0.20	
17371.00	90.460	89.820	6845.76	10841.75	-1744.12	10700.85	40.4800539	-104.5477909	0.10	
17466.00	90.180	89.590	6845.23	10935.55	-1743.63	10795.85	40.4800524	-104.5474494	0.38	
17561.00	90.430	89.500	6844.72	11029.30	-1742.87	10890.85	40.4800517	-104.5471079	0.28	
17655.00	90.370	89.550	6844.07	11122.07	-1742.09	10984.84	40.4800510	-104.5467700	0.08	

## REFERENCE WELLPATH IDENTIFICATION

Operator	NOBLE ENERGY, INC	Well	Foose State A17-618
Field	WELD COUNTY (NOBLE NAD 83 GRID)	API/Legal	05-123-52163
Facility	SEC.18-T06N-R64W	Wellbore	Foose State A17-618 AWB
Slot	SLOT#08 Foose State A17-618 (2347'FSL & 687'FEL,SEC.18)		

## WELLPATH DATA (182 stations) † = interpolated, ‡ = extrapolated station

MD [ft]	Inclination [°]	Azimuth [°]	TVD [ft]	Vert Sect [ft]	North [ft]	East [ft]	Latitude	Longitude	DLS [°/100ft]	Comments
17730.00	90.180	89.500	6843.71	11196.08	-1741.47	11059.84	40.4800505	-104.5465004	0.26	Last BH MWD Survey
17755.00‡	90.180	89.500	6843.63	11220.75	-1741.25	11084.84	40.4800504	-104.5464106	0.00	Projection to Bit (490'FSL & 200'FEL,SEC. 16)

## TARGETS

Name	TVD [ft]	North [ft]	East [ft]	Grid East [US ft]	Grid North [US ft]	Latitude	Longitude	Shape
OGDP 1 SEC.16-T06N-R64W	-38.00	7372.61	199.34	3254380.72	1428262.61	40.5053800	-104.5852000	polygon
2D Polygon: dimensions not calculated								
OGDP 1 SEC.17-T06N-R64W	-38.00	7372.61	199.34	3254380.72	1428262.61	40.5053800	-104.5852000	polygon
2D Polygon: dimensions not calculated								
OGDP 1 SEC.18-T06N-R64W	-38.00	7372.61	199.34	3254380.72	1428262.61	40.5053800	-104.5852000	polygon
2D Polygon: dimensions not calculated								
Foose State A17-618 BHL Rev-2 (510'FSL & 200'FEL,SEC.16)	6847.00	-1721.67	11085.25	<b>3265266.23</b>	<b>1419168.67</b>	40.4801041	-104.5464083	point
Foose State A17-618 IP1	6847.00	-1762.86	6029.93	3260211.09	1419127.48	40.4801389	-104.5645810	point
Foose State A17-618 LP Rev-2 (510'FSL & 200'FWL,SEC.17)	6847.00	-1819.58	902.32	<b>3255083.67</b>	<b>1419070.76</b>	40.4801302	-104.5830140	point
Foose State A17-618 BHL Rev-1 (510'FSL & 200'FEL,SEC.16)	6859.00	-1721.67	11085.25	<b>3265266.23</b>	<b>1419168.67</b>	40.4801041	-104.5464083	point
Foose State A17-618 LP Rev-1 (510'FSL & 200'FWL,SEC.17)	6859.00	-1819.58	902.32	<b>3255083.67</b>	<b>1419070.76</b>	40.4801302	-104.5830140	point
DP 135 Hardlines (300'FNL/FSL&200'FEL/FWL)	7002.00	0.95	-261.50	3253919.89	1420891.22	40.4851600	-104.5871300	polygon
2D Polygon: dimensions not calculated								

## WELLPATH COMPOSITION - Ref Wellbore: Foose State A17-618 AWB Ref Wellpath: Foose State A17-618 AWP

Start MD [ft]	End MD [ft]	Positional Uncertainty Model	Log Name/Comment	Wellbore	Survey Date
29.00	1898.00	OWSG MWD rev2 (MS+IFR1)	13.5" EVO Surface OWSG MWD rev2 (MS + IFR1) <161'-1898'>	Foose State A17-618 AWB	10/27/2023
1898.00	17755.00	OWSG MWD rev2 (MS+IFR1)	8.5" Lucida OWSG MWD rev2 (MS+IFR1) <1999'-17730'>	Foose State A17-618 AWB	10/30/2023

REFERENCE WELLPATH IDENTIFICATION			
Operator	NOBLE ENERGY, INC	Well	Foose State A17-618
Field	WELD COUNTY (NOBLE NAD 83 GRID)	API/Legal	05-123-52163
Facility	SEC.18-T06N-R64W	Wellbore	Foose State A17-618 AWB
Slot	SLOT#08 Foose State A17-618 (2347'FSL & 687'FEL,SEC.18)		

WELLPATH COMMENTS				
MD [ft]	Inclination [°]	Azimuth [°]	TVD [ft]	Comment
161.00	0.280	278.950	161.00	First BH MWD Survey
7570.61	89.086	88.722	6854.17	Cross 200' Hardline (488'FSL & 200'FWL,SEC. 17)
7573.00	89.251	88.600	6854.21	Shallowest MD for Perf
17730.00	90.180	89.500	6843.71	Last BH MWD Survey
17755.00	90.180	89.500	6843.63	Projection to Bit (490'FSL & 200'FEL,SEC. 16)