

NOBLE ENERGY, INC

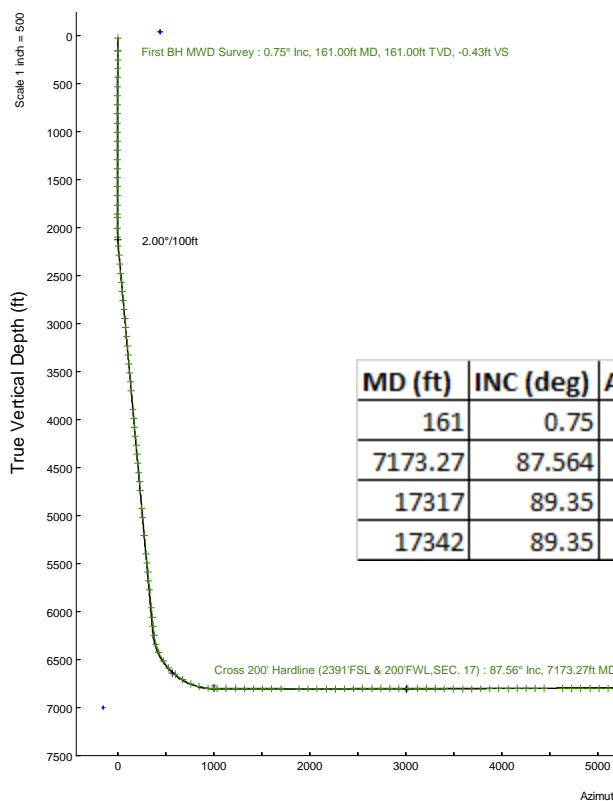
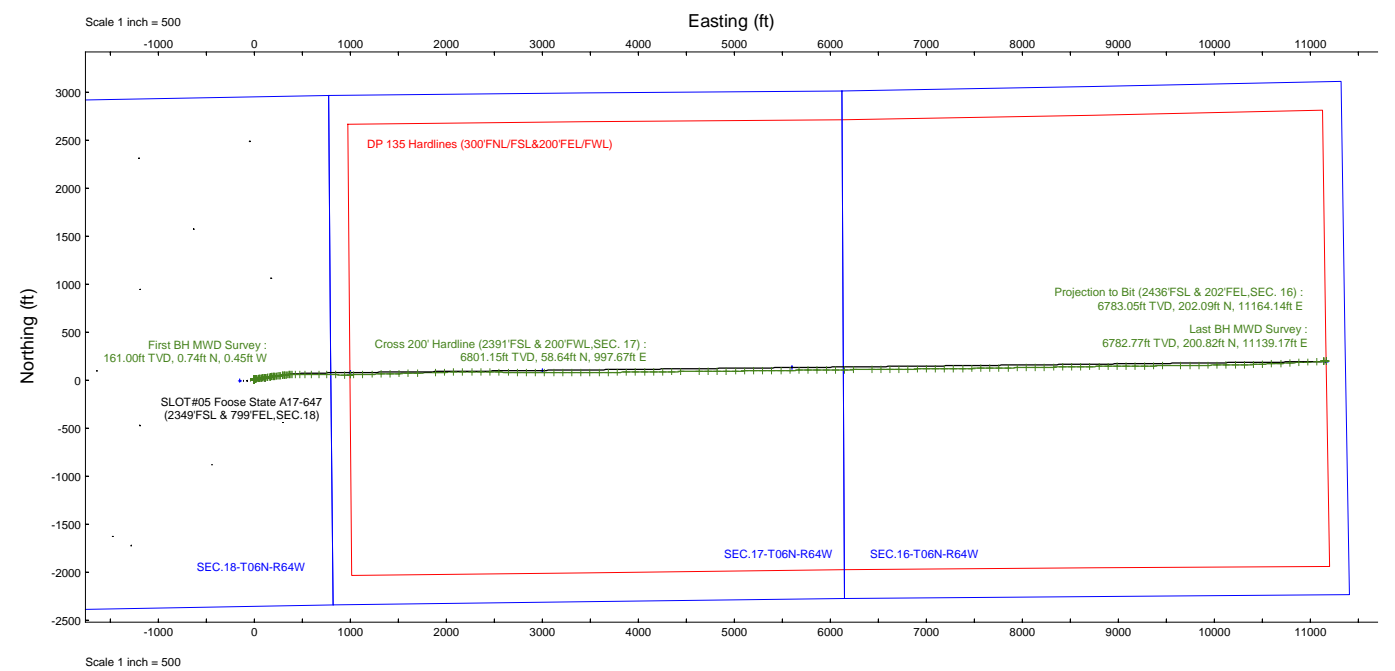
Plot reference wellpath is Foose State A17-647 (REV-B.0) PWP	Grid System: NAD83 / Lambert Colorado SP, Northern Zone (501), US feet
True vertical depths are referenced to Pten 268 (4704 GL+29KB@4733RKB) (RKB)	North Reference: Grid north
Reference wellpath measured depths are referenced to Pten 268 (4704 GL+29KB@4733RKB) (RKB)	Scale: True distance
Pten 268 (4704 GL+29KB@4733RKB) (RKB) to Mean Sea Level: 4733 feet	Coordinates are in feet referenced to Slot
Mean Sea Level to Ground level (At Slot: SLO#05 Foose State A17-647 (2349FSL & 799FEL,SEC.18)) : 0 feet	Depths are in feet
Offset wellpath MDs are referenced to each path's default MD datum	Created by: marsam01 on 2023-12-29; Database: WA_Driver

Location: COLORADO Slot: SLOT#05 Foose State A17-647 (2349FSL & 799FEL,SEC.18)

Field: WELD COUNTY (NOBLE NAD 83 GRID) Well: Foose State A17-647

Facility: SEC.18-T06N-R64W Wellbore: Foose State A17-647 PWB

Location Information						
Facility Name			Grid East (US ft)	Grid North (US ft)	Latitude	Longitude
SEC.18-T06N-R64W			3253919.886	1420891.224	40°29'6.5760" N	104°35'13.6680" W
Slot	Local N (ft)	Local E (ft)	Grid East (US ft)	Grid North (US ft)	Latitude	Longitude
SLOT#05 Foose State A17-647 (2349FSL & 799FEL,SEC.18)	1.55	150.20	3254070.085	1420892.771	40°29'6.5760" N	104°35'11.7240" W
Pten 268 (4704 GL+29KB@4733RKB) (RKB) to Ground level (At Slot: SLO#05 Foose State A17-647 (2349FSL & 799FEL,SEC.18))						4733ft
Mean Sea Level to Ground level (At Slot: SLO#05 Foose State A17-647 (2349FSL & 799FEL,SEC.18))						0ft
Pten 268 (4704 GL+29KB@4733RKB) (RKB) to Mean Sea Level						4733ft



MD (ft)	INC (deg)	AZ (deg)	TVD (ft)	Local N (ft)	Local E (ft)	Comment
161	0.75	328.8	161	0.74	-0.45	First BH MWD Survey
7173.27	87.564	88.906	6801.15	58.64	997.67	Cross 200' Hardline (2391'FSL & 200'FWL,SEC. 17)
17317	89.35	87.1	6782.77	200.82	11139.17	Last BH MWD Survey
17342	89.35	87.1	6783.05	202.09	11164.14	Projection to Bit (2436'FSL & 202'FEL,SEC. 16)

Last BH MWD Survey : 89.35° Inc, 17317.00ft MD, 6782.77ft TVD, 11140.98ft VS
 Projection to Bit (2436'FSL & 202'FEL,SEC. 16) : 89.35° Inc, 17342.00ft MD, 6783.05ft TVD, 11165.97ft VS

REFERENCE WELLPATH IDENTIFICATION

Operator	NOBLE ENERGY, INC	Well	Foose State A17-647
Field	WELD COUNTY (NOBLE NAD 83 GRID)	API/Legal	05-123-52160
Facility	SEC.18-T06N-R64W	Wellbore	Foose State A17-647 AWB
Slot	SLOT#05 Foose State A17-647 (2349'FSL & 799'FEL,SEC.18)		

REPORT SETUP INFORMATION

Projection System	NAD83 / Lambert Colorado SP, Northern Zone (501), US feet	Software System	WellArchitect® 6.0
North Reference	Grid	User	Martsam01
Scale	0.999965	Report Generated	12/27/2023 at 3:21:55 PM
Convergence at slot	0.59° East	Database	WA_Denver

WELLPATH LOCATION

	Local coordinates		Grid coordinates		Geographic coordinates	
	North[ft]	East[ft]	Easting[US ft]	Northing[US ft]	Latitude	Longitude
Slot Location	1.55	150.20	3254070.09	1420892.77	40.4851600°	-104.5865900°
Facility Reference Pt			3253919.89	1420891.22	40.4851600°	-104.5871300°
Field Reference Pt			3000000.00	4454105.15	48.7761986°	-105.5000000°

WELLPATH DATUM

Calculation method	Minimum curvature	Pten 268 (4704'GL+29'KB@4733'RKB) (RKB) to Facility Vertical Datum	4733.00ft
Horizontal Reference Pt	Slot	Pten 268 (4704'GL+29'KB@4733'RKB) (RKB) to Mean Sea Level	4733.00ft
Vertical Reference Pt	Pten 268 (4704'GL+29'KB@4733'RKB) (RKB)	Pten 268 (4704'GL+29'KB@4733'RKB) (RKB) to Ground Level at Slot (SLOT#05 Foose State A17-647 (2349'FSL & 799'FEL,SEC.18))	4733.00ft
MD Reference Pt	Pten 268 (4704'GL+29'KB@4733'RKB) (RKB)	Section Origin	N 0.00, E 0.00 ft
Field Vertical Reference	Mean Sea Level	Section Azimuth	88.99°

REFERENCE WELLPATH IDENTIFICATION			
Operator	NOBLE ENERGY, INC	Well	Foose State A17-647
Field	WELD COUNTY (NOBLE NAD 83 GRID)	API/Legal	05-123-52160
Facility	SEC.18-T06N-R64W	Wellbore	Foose State A17-647 AWB
Slot	SLOT#05 Foose State A17-647 (2349'FSL & 799'FEL,SEC.18)		

WELLPATH DATA (179 stations) † = interpolated, ‡ = extrapolated station

MD [ft]	Inclination [°]	Azimuth [°]	TVD [ft]	Vert Sect [ft]	North [ft]	East [ft]	Latitude	Longitude	DLS ["/100ft]	Comments
0.00†	0.000	328.800	0.00	0.00	0.00	0.00	40.4851600	-104.5865900	0.00	
29.00	0.000	328.800	29.00	0.00	0.00	0.00	40.4851600	-104.5865900	0.00	
161.00	0.750	328.800	161.00	-0.43	0.74	-0.45	40.4851620	-104.5865916	0.57	First BH MWD Survey
252.00	0.720	324.530	251.99	-1.06	1.71	-1.09	40.4851647	-104.5865938	0.07	
342.00	0.580	316.840	341.98	-1.68	2.51	-1.73	40.4851669	-104.5865961	0.18	
436.00	0.710	316.620	435.98	-2.39	3.28	-2.45	40.4851691	-104.5865987	0.14	
531.00	0.580	324.510	530.97	-3.06	4.10	-3.14	40.4851713	-104.5866011	0.17	
626.00	0.580	320.650	625.97	-3.63	4.86	-3.72	40.4851734	-104.5866032	0.04	
721.00	0.550	316.640	720.96	-4.24	5.56	-4.34	40.4851754	-104.5866054	0.05	
816.00	0.630	320.170	815.96	-4.87	6.30	-4.99	40.4851774	-104.5866077	0.09	
911.00	0.580	330.150	910.95	-5.43	7.11	-5.56	40.4851797	-104.5866097	0.12	
1006.00	0.570	331.870	1005.95	-5.88	7.95	-6.02	40.4851820	-104.5866114	0.02	
1101.00	0.470	343.330	1100.94	-6.20	8.74	-6.36	40.4851842	-104.5866125	0.15	
1196.00	0.420	346.260	1195.94	-6.38	9.45	-6.55	40.4851861	-104.5866132	0.06	
1291.00	0.530	353.580	1290.94	-6.50	10.22	-6.68	40.4851883	-104.5866136	0.13	
1385.00	0.410	353.470	1384.93	-6.57	10.99	-6.77	40.4851904	-104.5866139	0.13	
1480.00	0.400	21.380	1479.93	-6.48	11.64	-6.69	40.4851921	-104.5866136	0.21	
1575.00	0.340	35.550	1574.93	-6.19	12.17	-6.40	40.4851936	-104.5866126	0.11	
1670.00	0.470	40.630	1669.93	-5.76	12.70	-5.99	40.4851950	-104.5866110	0.14	
1765.00	0.440	22.170	1764.92	-5.36	13.33	-5.59	40.4851968	-104.5866096	0.16	
1860.00	0.440	17.460	1859.92	-5.10	14.02	-5.35	40.4851986	-104.5866087	0.04	
1896.00	0.240	6.250	1895.92	-5.04	14.23	-5.30	40.4851992	-104.5866085	0.58	
2005.00	1.270	150.400	2004.91	-4.44	13.40	-4.68	40.4851969	-104.5866063	1.35	
2100.00	2.650	78.980	2099.87	-1.77	12.91	-2.00	40.4851955	-104.5865967	2.68	
2195.00	4.640	78.470	2194.67	4.17	14.09	3.92	40.4851986	-104.5865754	2.09	
2289.00	4.990	80.110	2288.34	11.95	15.56	11.67	40.4852024	-104.5865475	0.40	
2384.00	5.480	77.610	2382.94	20.48	17.24	20.18	40.4852067	-104.5865168	0.57	
2479.00	5.390	81.600	2477.51	29.35	18.86	29.02	40.4852110	-104.5864850	0.41	
2573.00	5.440	80.970	2571.09	38.14	20.21	37.79	40.4852144	-104.5864534	0.08	
2668.00	5.240	82.010	2665.68	46.91	21.52	46.53	40.4852177	-104.5864219	0.23	
2762.00	5.290	81.330	2759.29	55.46	22.77	55.07	40.4852209	-104.5863912	0.09	
2857.00	5.270	81.660	2853.88	64.13	24.06	63.71	40.4852242	-104.5863601	0.04	
2952.00	5.250	82.800	2948.48	72.78	25.24	72.34	40.4852272	-104.5863290	0.11	
3046.00	5.270	81.750	3042.09	81.33	26.40	80.88	40.4852302	-104.5862983	0.10	
3141.00	5.360	81.530	3136.68	90.06	27.68	89.59	40.4852334	-104.5862669	0.10	
3236.00	5.110	82.280	3231.28	98.66	28.90	98.17	40.4852365	-104.5862360	0.27	
3330.00	4.970	83.390	3324.92	106.87	29.93	106.36	40.4852391	-104.5862066	0.18	
3425.00	5.050	81.820	3419.55	115.12	31.00	114.59	40.4852418	-104.5861769	0.17	
3520.00	5.410	81.800	3514.16	123.71	32.23	123.16	40.4852450	-104.5861461	0.38	
3614.00	5.150	82.890	3607.76	132.30	33.39	131.73	40.4852479	-104.5861152	0.30	
3709.00	5.240	81.780	3702.37	140.84	34.53	140.25	40.4852508	-104.5860845	0.14	
3898.00	5.030	81.660	3890.61	157.62	36.97	156.99	40.4852570	-104.5860243	0.11	
3993.00	5.180	81.620	3985.23	166.01	38.20	165.36	40.4852602	-104.5859942	0.16	
4087.00	5.350	81.590	4078.84	174.56	39.46	173.89	40.4852634	-104.5859634	0.18	
4182.00	5.470	81.890	4173.41	183.45	40.75	182.76	40.4852667	-104.5859315	0.13	

REFERENCE WELLPATH IDENTIFICATION			
Operator	NOBLE ENERGY, INC	Well	Foose State A17-647
Field	WELD COUNTY (NOBLE NAD 83 GRID)	API/Legal	05-123-52160
Facility	SEC.18-T06N-R64W	Wellbore	Foose State A17-647 AWB
Slot	SLOT#05 Foose State A17-647 (2349'FSL & 799'FEL,SEC.18)		

WELLPATH DATA (179 stations) † = interpolated, ‡ = extrapolated station

MD [ft]	Inclination [°]	Azimuth [°]	TVD [ft]	Vert Sect [ft]	North [ft]	East [ft]	Latitude	Longitude	DLS ["/100ft]	Comments
4277.00	5.290	82.330	4268.00	192.29	41.97	191.58	40.4852698	-104.5858998	0.19	
4371.00	5.130	83.200	4361.61	200.78	43.04	200.05	40.4852725	-104.5858693	0.19	
4466.00	5.130	83.100	4456.23	209.23	44.06	208.48	40.4852750	-104.5858389	0.01	
4561.00	5.060	84.020	4550.85	217.63	45.00	216.86	40.4852774	-104.5858088	0.11	
4655.00	5.180	84.250	4644.48	225.98	45.86	225.21	40.4852795	-104.5857787	0.13	
4750.00	5.260	82.630	4739.08	234.59	46.85	233.79	40.4852820	-104.5857478	0.18	
4939.00	4.330	82.910	4927.42	250.29	48.84	249.47	40.4852870	-104.5856914	0.49	
5034.00	5.500	83.580	5022.07	258.39	49.79	257.55	40.4852894	-104.5856623	1.23	
5223.00	5.500	83.370	5210.20	276.42	51.85	275.55	40.4852945	-104.5855976	0.01	
5412.00	5.680	83.890	5398.30	294.75	53.89	293.84	40.4852996	-104.5855317	0.10	
5507.00	5.500	84.160	5492.85	303.97	54.86	303.05	40.4853020	-104.5854986	0.19	
5601.00	5.520	83.170	5586.41	312.96	55.85	312.02	40.4853045	-104.5854663	0.10	
5696.00	5.650	82.880	5680.96	322.15	56.98	321.19	40.4853073	-104.5854333	0.14	
5791.00	5.690	83.650	5775.50	331.49	58.08	330.51	40.4853101	-104.5853997	0.09	
5980.00	5.630	83.390	5963.58	350.05	60.18	349.04	40.4853153	-104.5853331	0.03	
6074.00	5.740	82.730	6057.11	359.31	61.31	358.28	40.4853181	-104.5852998	0.14	
6169.00	5.510	86.090	6151.66	368.59	62.22	367.54	40.4853204	-104.5852665	0.42	
6264.00	6.690	89.980	6246.12	378.67	62.53	377.63	40.4853209	-104.5852302	1.32	
6359.00	15.680	89.340	6339.22	397.08	62.68	396.03	40.4853208	-104.5851640	9.46	
6453.00	23.640	89.560	6427.67	428.68	62.97	427.63	40.4853207	-104.5850504	8.47	
6548.00	32.830	88.790	6511.27	473.57	63.66	472.52	40.4853214	-104.5848891	9.68	
6642.00	41.190	89.200	6586.27	530.11	64.64	529.05	40.4853224	-104.5846858	8.90	
6737.00	50.070	89.870	6652.64	597.95	65.16	596.89	40.4853219	-104.5844419	9.36	
6832.00	57.750	90.290	6708.55	674.64	65.04	673.60	40.4853194	-104.5841662	8.09	
6926.00	66.980	91.350	6752.11	757.78	63.81	756.77	40.4853137	-104.5838672	9.87	
7021.00	77.020	92.730	6781.43	847.89	60.57	846.95	40.4853023	-104.5835432	10.66	
7116.00	84.110	90.200	6796.99	941.45	58.20	940.56	40.4852931	-104.5832068	7.91	
7173.27†	87.564	88.906	6801.15	998.55	58.64	997.67	40.4852927	-104.5830015	6.44	Cross 200' Hardline (2391'FSL & 200'FWL,SEC. 17)
7176.00†	87.729	88.844	6801.26	1001.28	58.70	1000.40	40.4852928	-104.5829917	6.44	Shallowest MD for Perf
7210.00	89.780	88.080	6802.00	1035.27	59.61	1034.38	40.4852943	-104.5828695	6.44	
7305.00	89.970	88.360	6802.21	1130.26	62.56	1129.33	40.4852997	-104.5825280	0.36	
7400.00	89.720	88.450	6802.47	1225.25	65.20	1224.29	40.4853043	-104.5821866	0.28	
7494.00	89.820	88.870	6802.84	1319.25	67.40	1318.26	40.4853076	-104.5818487	0.46	
7589.00	90.120	88.480	6802.89	1414.25	69.60	1413.24	40.4853110	-104.5815072	0.52	
7683.00	89.910	88.410	6802.87	1508.25	72.15	1507.20	40.4853153	-104.5811693	0.24	
7778.00	89.780	88.310	6803.13	1603.24	74.87	1602.17	40.4853201	-104.5808279	0.17	
7873.00	89.780	88.460	6803.49	1698.23	77.55	1697.13	40.4853247	-104.5804864	0.16	
8062.00	89.910	88.490	6804.00	1887.23	82.58	1886.06	40.4853331	-104.5798071	0.07	
8157.00	89.850	88.210	6804.20	1982.22	85.31	1981.02	40.4853379	-104.5794656	0.30	
8252.00	89.820	89.290	6804.48	2077.22	87.38	2076.00	40.4853409	-104.5791241	1.14	
8346.00	89.910	89.220	6804.70	2171.22	88.61	2169.99	40.4853416	-104.5787862	0.12	
8441.00	90.120	89.020	6804.67	2266.22	90.07	2264.98	40.4853429	-104.5784447	0.31	
8536.00	90.120	90.400	6804.47	2361.20	90.55	2359.97	40.4853415	-104.5781032	1.45	
8630.00	91.630	92.270	6803.04	2455.11	88.36	2453.93	40.4853328	-104.5777655	2.56	
8725.00	90.030	90.290	6801.66	2550.01	86.24	2548.89	40.4853243	-104.5774242	2.68	

REFERENCE WELLPATH IDENTIFICATION			
Operator	NOBLE ENERGY, INC	Well	Foose State A17-647
Field	WELD COUNTY (NOBLE NAD 83 GRID)	API/Legal	05-123-52160
Facility	SEC.18-T06N-R64W	Wellbore	Foose State A17-647 AWB
Slot	SLOT#05 Foose State A17-647 (2349'FSL & 799'FEL,SEC.18)		

WELLPATH DATA (179 stations)

MD [ft]	Inclination [°]	Azimuth [°]	TVD [ft]	Vert Sect [ft]	North [ft]	East [ft]	Latitude	Longitude	DLS [°/100ft]	Comments
8820.00	89.880	90.010	6801.74	2644.99	85.99	2643.89	40.4853209	-104.5770828	0.33	
8915.00	91.080	91.300	6800.94	2739.95	84.90	2738.87	40.4853152	-104.5767413	1.85	
9010.00	89.910	90.250	6800.12	2834.89	83.62	2833.86	40.4853089	-104.5763999	1.65	
9104.00	89.820	90.390	6800.34	2928.87	83.09	2927.86	40.4853048	-104.5760621	0.18	
9199.00	89.750	90.850	6800.70	3023.83	82.06	3022.85	40.4852993	-104.5757206	0.49	
9294.00	89.750	90.110	6801.11	3118.79	81.27	3117.84	40.4852944	-104.5753792	0.78	
9388.00	89.820	90.130	6801.46	3212.78	81.07	3211.84	40.4852911	-104.5750413	0.08	
9483.00	89.720	90.430	6801.85	3307.75	80.61	3306.84	40.4852871	-104.5746998	0.33	
9578.00	88.430	89.180	6803.38	3402.72	80.93	3401.83	40.4852853	-104.5743584	1.89	
9672.00	89.820	89.400	6804.81	3496.71	82.09	3495.80	40.4852858	-104.5740205	1.50	
9767.00	89.880	89.270	6805.06	3591.71	83.20	3590.80	40.4852861	-104.5736790	0.15	
9862.00	90.220	89.260	6804.98	3686.71	84.42	3685.79	40.4852867	-104.5733375	0.36	
9957.00	90.740	89.320	6804.18	3781.70	85.59	3780.78	40.4852872	-104.5729959	0.55	
10051.00	90.060	89.210	6803.53	3875.70	86.80	3874.77	40.4852878	-104.5726580	0.73	
10146.00	90.220	89.340	6803.30	3970.70	88.00	3969.76	40.4852884	-104.5723165	0.22	
10240.00	90.250	89.520	6802.91	4064.69	88.94	4063.75	40.4852883	-104.5719786	0.19	
10335.00	90.250	89.360	6802.50	4159.69	89.86	4158.75	40.4852881	-104.5716371	0.17	
10430.00	90.060	89.460	6802.24	4254.69	90.84	4253.74	40.4852881	-104.5712956	0.23	
10524.00	90.120	89.230	6802.09	4348.68	91.92	4347.74	40.4852883	-104.5709577	0.25	
10619.00	90.150	89.320	6801.87	4443.68	93.12	4442.73	40.4852889	-104.5706161	0.10	
10808.00	90.310	89.590	6801.11	4632.67	94.92	4631.72	40.4852884	-104.5699367	0.17	
10904.00	90.090	89.540	6800.77	4728.67	95.65	4727.72	40.4852876	-104.5695916	0.24	
10998.00	90.520	89.330	6800.27	4822.66	96.57	4821.71	40.4852874	-104.5692537	0.51	
11093.00	90.060	89.290	6799.79	4917.66	97.72	4916.70	40.4852878	-104.5689122	0.49	
11187.00	90.220	89.660	6799.56	5011.66	98.58	5010.70	40.4852875	-104.5685742	0.43	
11282.00	90.090	89.130	6799.31	5106.65	99.58	5105.69	40.4852875	-104.5682327	0.57	
11376.00	90.250	89.250	6799.03	5200.65	100.91	5199.68	40.4852884	-104.5678948	0.21	
11471.00	90.220	89.400	6798.64	5295.65	102.03	5294.67	40.4852888	-104.5675533	0.16	
11566.00	90.430	88.820	6798.10	5390.65	103.50	5389.66	40.4852901	-104.5672118	0.65	
11660.00	90.280	89.590	6797.52	5484.64	104.81	5483.65	40.4852910	-104.5668739	0.83	
11755.00	90.280	89.580	6797.05	5579.64	105.50	5578.65	40.4852901	-104.5665324	0.01	
11850.00	90.490	89.300	6796.41	5674.63	106.42	5673.64	40.4852899	-104.5661909	0.37	
11945.00	90.430	89.150	6795.65	5769.63	107.71	5768.63	40.4852907	-104.5658494	0.17	
12039.00	90.370	89.200	6794.99	5863.63	109.06	5862.61	40.4852917	-104.5655114	0.08	
12134.00	90.000	89.270	6794.69	5958.62	110.33	5957.61	40.4852924	-104.5651699	0.40	
12229.00	90.650	89.920	6794.15	6053.62	111.00	6052.60	40.4852915	-104.5648284	0.97	
12323.00	90.830	89.310	6792.94	6147.60	111.63	6146.59	40.4852905	-104.5644905	0.68	
12418.00	90.280	89.170	6792.01	6242.60	112.89	6241.58	40.4852912	-104.5641490	0.60	
12607.00	90.550	89.800	6790.65	6431.58	114.59	6430.56	40.4852904	-104.5634696	0.36	
12702.00	89.820	89.590	6790.34	6526.58	115.10	6525.56	40.4852890	-104.5631281	0.80	
12797.00	90.620	89.580	6789.97	6621.57	115.79	6620.56	40.4852882	-104.5627866	0.84	
12891.00	90.150	88.970	6789.34	6715.56	116.98	6714.55	40.4852887	-104.5624487	0.82	
12986.00	90.090	89.260	6789.14	6810.56	118.44	6809.53	40.4852900	-104.5621072	0.31	
13081.00	90.150	89.370	6788.94	6905.56	119.58	6904.53	40.4852903	-104.5617657	0.13	
13175.00	90.310	89.420	6788.57	6999.56	120.57	6998.52	40.4852903	-104.5614277	0.18	

REFERENCE WELLPATH IDENTIFICATION			
Operator	NOBLE ENERGY, INC	Well	Foose State A17-647
Field	WELD COUNTY (NOBLE NAD 83 GRID)	API/Legal	05-123-52160
Facility	SEC.18-T06N-R64W	Wellbore	Foose State A17-647 AWB
Slot	SLOT#05 Foose State A17-647 (2349'FSL & 799'FEL,SEC.18)		

WELLPATH DATA (179 stations) † = interpolated, ‡ = extrapolated station

MD [ft]	Inclination [°]	Azimuth [°]	TVD [ft]	Vert Sect [ft]	North [ft]	East [ft]	Latitude	Longitude	DLS [°/100ft]	Comments
13270.00	90.250	89.400	6788.10	7094.56	121.55	7093.52	40.4852903	-104.5610862	0.07	
13365.00	90.150	89.360	6787.77	7189.55	122.58	7188.51	40.4852903	-104.5607447	0.11	
13459.00	90.250	89.220	6787.44	7283.55	123.74	7282.50	40.4852908	-104.5604068	0.18	
13554.00	90.310	89.410	6786.98	7378.55	124.88	7377.49	40.4852911	-104.5600653	0.21	
13649.00	89.720	89.160	6786.95	7473.55	126.06	7472.49	40.4852916	-104.5597238	0.67	
13743.00	89.780	89.010	6787.36	7567.55	127.57	7566.47	40.4852930	-104.5593858	0.17	
13838.00	89.940	89.540	6787.60	7662.54	128.77	7661.46	40.4852935	-104.5590443	0.58	
13933.00	89.630	89.050	6787.95	7757.54	129.94	7756.46	40.4852940	-104.5587028	0.61	
14027.00	89.750	89.000	6788.46	7851.54	131.54	7850.44	40.4852956	-104.5583649	0.14	
14122.00	89.850	89.190	6788.79	7946.54	133.04	7945.43	40.4852970	-104.5580234	0.23	
14217.00	89.750	89.000	6789.12	8041.54	134.54	8040.42	40.4852983	-104.5576819	0.23	
14311.00	90.650	88.680	6788.80	8135.54	136.44	8134.40	40.4853008	-104.5573440	1.02	
14406.00	89.940	89.290	6788.31	8230.53	138.12	8229.38	40.4853027	-104.5570025	0.99	
14501.00	89.880	89.100	6788.46	8325.53	139.46	8324.37	40.4853036	-104.5566610	0.21	
14596.00	89.780	89.080	6788.74	8420.53	140.97	8419.36	40.4853049	-104.5563195	0.11	
14690.00	89.820	88.760	6789.07	8514.53	142.74	8513.34	40.4853070	-104.5559815	0.34	
14785.00	89.910	89.350	6789.29	8609.53	144.30	8608.32	40.4853086	-104.5556400	0.63	
14879.00	89.570	89.190	6789.72	8703.53	145.50	8702.32	40.4853091	-104.5553021	0.40	
14974.00	90.800	89.780	6789.41	8798.52	146.36	8797.31	40.4853087	-104.5549606	1.44	
15069.00	90.030	89.700	6788.72	8893.51	146.79	8892.31	40.4853071	-104.5546191	0.81	
15163.00	89.970	89.380	6788.72	8987.51	147.54	8986.30	40.4853064	-104.5542812	0.35	
15258.00	89.940	89.030	6788.80	9082.51	148.86	9081.29	40.4853072	-104.5539397	0.37	
15353.00	89.880	89.280	6788.95	9177.50	150.26	9176.28	40.4853083	-104.5535982	0.27	
15448.00	89.880	89.270	6789.15	9272.50	151.46	9271.27	40.4853088	-104.5532566	0.01	
15542.00	89.690	89.280	6789.50	9366.50	152.65	9365.27	40.4853093	-104.5529187	0.20	
15637.00	89.820	89.410	6789.90	9461.50	153.74	9460.26	40.4853095	-104.5525772	0.19	
15826.00	90.370	89.320	6789.59	9650.49	155.83	9649.25	40.4853097	-104.5518978	0.29	
15921.00	90.060	89.390	6789.23	9745.49	156.90	9744.24	40.4853099	-104.5515563	0.33	
16016.00	89.970	89.200	6789.21	9840.49	158.07	9839.23	40.4853103	-104.5512147	0.22	
16110.00	90.000	89.370	6789.23	9934.49	159.24	9933.23	40.4853107	-104.5508768	0.18	
16205.00	90.060	89.550	6789.18	10029.48	160.14	10028.22	40.4853104	-104.5505353	0.20	
16300.00	90.280	89.110	6788.90	10124.48	161.25	10123.21	40.4853107	-104.5501938	0.52	
16395.00	90.030	89.300	6788.65	10219.48	162.57	10218.20	40.4853115	-104.5498523	0.33	
16489.00	89.750	89.290	6788.83	10313.48	163.73	10312.20	40.4853119	-104.5495144	0.30	
16584.00	90.430	87.430	6788.68	10408.47	166.44	10407.15	40.4853166	-104.5491729	2.08	
16679.00	90.150	87.520	6788.20	10503.43	170.63	10502.06	40.4853253	-104.5488316	0.31	
16773.00	91.290	87.500	6787.01	10597.39	174.71	10595.96	40.4853337	-104.5484939	1.21	
16868.00	92.090	88.130	6784.21	10692.33	178.33	10690.85	40.4853408	-104.5481526	1.07	
16963.00	92.250	86.530	6780.62	10787.22	182.76	10785.68	40.4853502	-104.5478116	1.69	
17058.00	89.050	87.190	6779.54	10882.14	187.96	10880.51	40.4853617	-104.5474705	3.44	
17152.00	89.350	87.120	6780.85	10976.08	192.62	10974.39	40.4853717	-104.5471328	0.33	
17247.00	89.320	87.190	6781.95	11071.02	197.34	11069.27	40.4853819	-104.5467916	0.08	
17317.00	89.350	87.100	6782.77	11140.98	200.82	11139.17	40.4853894	-104.5465402	0.14	Last BH MWD Survey
17342.00†	89.350	87.100	6783.05	11165.97	202.09	11164.14	40.4853921	-104.5464504	0.00	Projection to Bit (2436'FSL & 202'FEL,SEC. 16)

REFERENCE WELLPATH IDENTIFICATION			
Operator	NOBLE ENERGY, INC	Well	Foose State A17-647
Field	WELD COUNTY (NOBLE NAD 83 GRID)	API/Legal	05-123-52160
Facility	SEC.18-T06N-R64W	Wellbore	Foose State A17-647 AWB
Slot	SLOT#05 Foose State A17-647 (2349'FSL & 799'FEL,SEC.18)		

TARGETS								
Name	TVD [ft]	North [ft]	East [ft]	Grid East [US ft]	Grid North [US ft]	Latitude	Longitude	Shape
OGDP 1 SEC.16-T06N-R64W	-39.00	7370.11	310.64	3254380.72	1428262.61	40.5053800	-104.5852000	polygon
2D Polygon: dimensions not calculated								
OGDP 1 SEC.17-T06N-R64W	-39.00	7370.11	310.64	3254380.72	1428262.61	40.5053800	-104.5852000	polygon
2D Polygon: dimensions not calculated								
OGDP 1 SEC.18-T06N-R64W	-39.00	7370.11	310.64	3254380.72	1428262.61	40.5053800	-104.5852000	polygon
2D Polygon: dimensions not calculated								
Foose State A17-647 BHL Rev-1 (2432'FSL & 200'FEL,SEC.16)	6776.00	197.73	11165.99	3265235.67	1421090.49	40.4853801	-104.5464439	point
Foose State A17-647 LP Rev-1 (2415'FSL & 200'FWL,SEC.17)	6776.00	82.84	997.67	3255067.72	1420975.60	40.4853591	-104.5830006	point
Foose State A17-647 BHL Rev-3 (2432'FSL & 200'FEL,SEC.16)	6791.00	197.73	11165.99	3265235.67	1421090.49	40.4853801	-104.5464439	point
Foose State A17-647 VS Target 2 REV-2 5600'VS	6791.00	134.83	5598.85	3259668.73	1421027.59	40.4853700	-104.5664586	point
Foose State A17-647 LP Rev-3 (2415'FSL & 200'FWL,SEC.17)	6806.00	82.84	997.67	3255067.72	1420975.60	40.4853591	-104.5830006	point
Foose State A17-647 VS Target 1 REV-2 3000'VS	6806.00	105.45	2998.72	3257068.69	1420998.22	40.4853641	-104.5758065	point
DP 135 Hardlines (300'FNL/FSL&200'FEL/FWL)	7001.00	-1.55	-150.20	3253919.89	1420891.22	40.4851600	-104.5871300	polygon
2D Polygon: dimensions not calculated								

WELLPATH COMPOSITION - Ref Wellbore: Foose State A17-647 AWB Ref Wellpath: Foose State A17-647 AWP					
Start MD [ft]	End MD [ft]	Positional Uncertainty Model	Log Name/Comment	Wellbore	Survey Date
29.00	1896.00	OWSG MWD rev2 (MS+IFR1)	13.5" EVO Surface OWSG MWD rev2 (MS+IFR1) <161'-1896'>	Foose State A17-647 AWB	10/27/2023
1896.00	17342.00	OWSG MWD rev2 (MS+IFR1)	8.5" Lucida OWSG MWD Rev2 (MS+IFR1) <2005-17317	Foose State A17-647 AWB	11/11/2023

REFERENCE WELLPATH IDENTIFICATION			
Operator	NOBLE ENERGY, INC	Well	Foose State A17-647
Field	WELD COUNTY (NOBLE NAD 83 GRID)	API/Legal	05-123-52160
Facility	SEC.18-T06N-R64W	Wellbore	Foose State A17-647 AWB
Slot	SLOT#05 Foose State A17-647 (2349'FSL & 799'FEL,SEC.18)		

WELLPATH COMMENTS				
MD [ft]	Inclination [°]	Azimuth [°]	TVD [ft]	Comment
161.00	0.750	328.800	161.00	First BH MWD Survey
7173.27	87.564	88.906	6801.15	Cross 200' Hardline (2391'FSL & 200'FWL,SEC. 17)
7176.00	87.729	88.844	6801.26	Shallowest MD for Perf
17317.00	89.350	87.100	6782.77	Last BH MWD Survey
17342.00	89.350	87.100	6783.05	Projection to Bit (2436'FSL & 202'FEL,SEC. 16)