

NOBLE ENERGY, INC

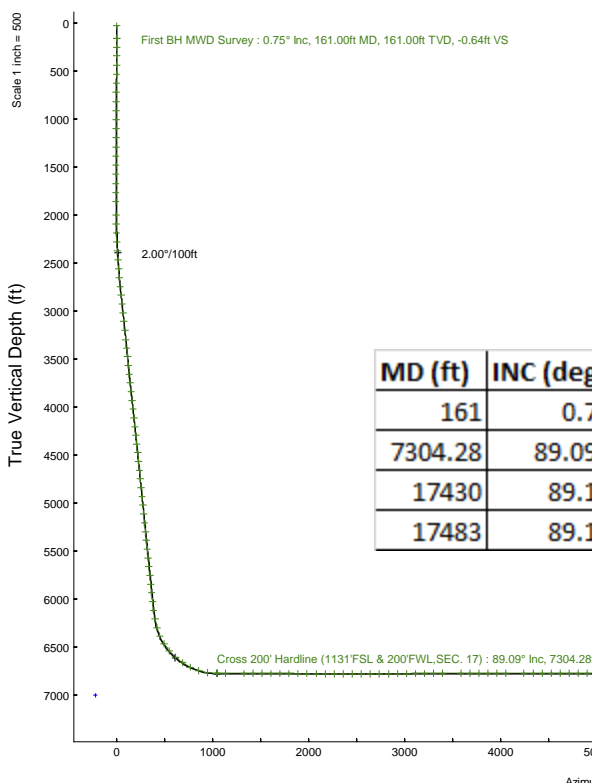
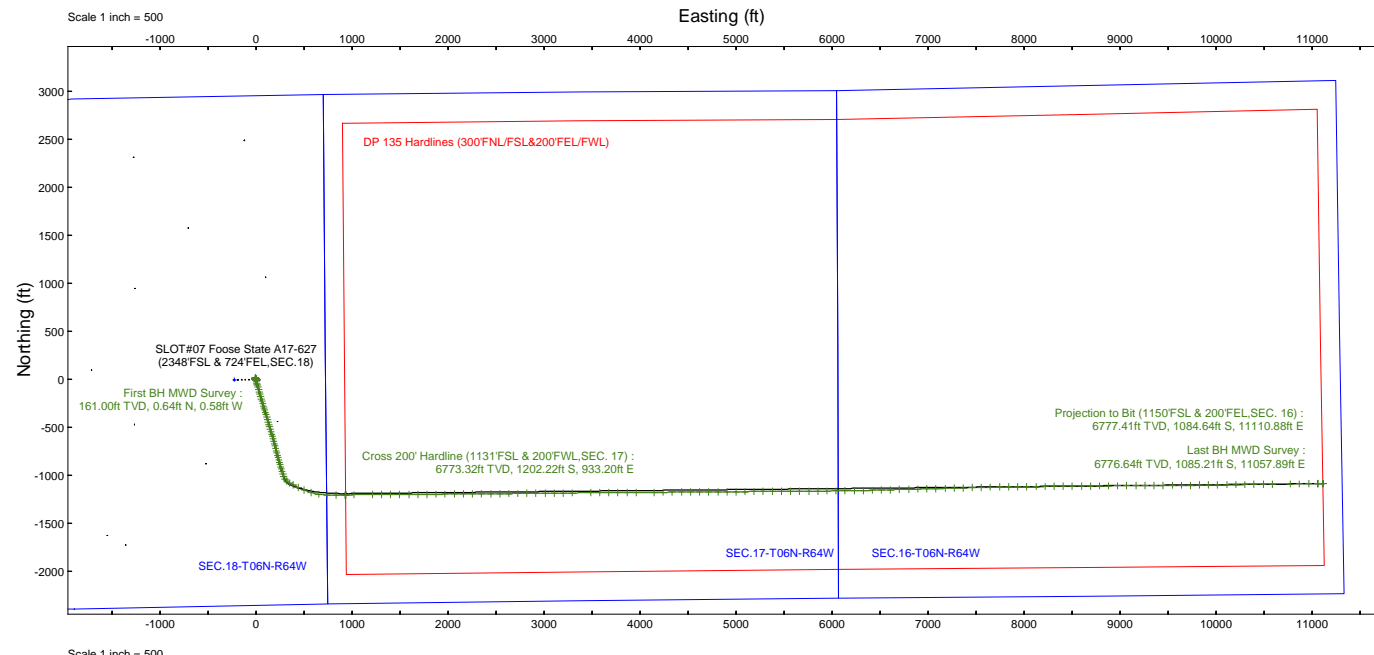
Plot reference wellpath is Foose State A17-627 (REV-B.0) PWP	Grid System: NAD83 / Lambert Colorado SP, Northern Zone (501), US feet
True vertical depths are referenced to Pten 268 (4705 GL+29KB@4734 RKB) (RKB)	North Reference: Grid north
Reference wellpath measured depths are referenced to Pten 268 (4705 GL+29KB@4734 RKB) (RKB)	Scale: True distance
Pten 268 (4705 GL+29KB@4734 RKB) (RKB) to Mean Sea Level: 4734 feet	Coordinates are in feet referenced to Slot
Mean Sea Level to Ground level (At Slot: SLO#07 Foose State A17-627 (2348FSL & 724FEL,SEC.18)): 0 feet	Depths are in feet
Offset wellpath MDs are referenced to each path's default MD datum	Created by: marsam01 on 2023-12-29; Database: WA_Driver

Location: COLORADO Slot: SLO#07 Foose State A17-627 (2348FSL & 724FEL,SEC.18)

Field: WELD COUNTY (NOBLE NAD 83 GRID) Well: Foose State A17-627

Facility: SEC.18-T06N-R64W Wellbore: Foose State A17-627 PWB

Location Information						
Facility Name			Grid East (US ft)	Grid North (US ft)	Latitude	Longitude
SEC.18-T06N-R64W			3253919.886	1420891.224	40°29'6.5760"N	104°35'13.6680"W
Slot	Local N (ft)	Local E (ft)	Grid East (US ft)	Grid North (US ft)	Latitude	Longitude
SLO#07 Foose State A17-627 (2348FSL & 724FEL,SEC.18)	2.32	225.31	3254145.184	1420893.545	40°29'6.5760"N	104°35'10.7520"W
Pten 268 (4705 GL+29KB@4734 RKB) (RKB) to Ground level (At Slot: SLO#07 Foose State A17-627 (2348FSL & 724FEL,SEC.18))						4734ft
Mean Sea Level to Ground level (At Slot: SLO#07 Foose State A17-627 (2348FSL & 724FEL,SEC.18))						0ft
Pten 268 (4705 GL+29KB@4734 RKB) (RKB) to Mean Sea Level						4734ft



MD (ft)	INC (deg)	AZ (deg)	TVD (ft)	Local N (ft)	Local E (ft)	Comment
161	0.75	317.65	161	0.64	-0.58	First BH MWD Survey
7304.28	89.091	88.393	6773.32	-1202.22	933.2	Cross 200' Hardline (1131'FSL & 200'FWL, SEC. 17)
17430	89.17	89.39	6776.64	-1085.21	11057.89	Last BH MWD Survey
17483	89.17	89.39	6777.41	-1084.64	11110.88	Projection to Bit (1150'FSL & 200'FEL, SEC. 16)



Actual Wellpath Report

Foose State A17-627 AWP

Page 1 of 7



REFERENCE WELLPATH IDENTIFICATION

Operator	NOBLE ENERGY, INC	Well	Foose State A17-627
Field	WELD COUNTY (NOBLE NAD 83 GRID)	API/Legal	05-123-52162
Facility	SEC.18-T06N-R64W	Wellbore	Foose State A17-627 AWB
Slot	SLOT#07 Foose State A17-627 (2348'FSL & 724'FEL,SEC.18)		

REPORT SETUP INFORMATION

Projection System	NAD83 / Lambert Colorado SP, Northern Zone (501), US feet	Software System	WellArchitect® 6.0
North Reference	Grid	User	Martsam01
Scale	0.999965	Report Generated	12/27/2023 at 3:37:00 PM
Convergence at slot	0.59° East	Database	WA_Denver

WELLPATH LOCATION

	Local coordinates		Grid coordinates		Geographic coordinates	
	North[ft]	East[ft]	Easting[US ft]	Northing[US ft]	Latitude	Longitude
Slot Location	2.32	225.31	3254145.18	1420893.55	40.4851600°	-104.5863200°
Facility Reference Pt			3253919.89	1420891.22	40.4851600°	-104.5871300°
Field Reference Pt			3000000.00	4454105.15	48.7761986°	-105.5000000°

WELLPATH DATUM

Calculation method	Minimum curvature	Pten 268 (4705'GL+29'KB@4734'RKB) (RKB) to Facility Vertical Datum	4734.00ft
Horizontal Reference Pt	Slot	Pten 268 (4705'GL+29'KB@4734'RKB) (RKB) to Mean Sea Level	4734.00ft
Vertical Reference Pt	Pten 268 (4705'GL+29'KB@4734'RKB) (RKB)	Pten 268 (4705'GL+29'KB@4734'RKB) (RKB) to Ground Level at Slot (SLOT#07 Foose State A17-627 (2348'FSL & 724'FEL,SEC.18))	4734.00ft
MD Reference Pt	Pten 268 (4705'GL+29'KB@4734'RKB) (RKB)	Section Origin	N 0.00, E 0.00 ft
Field Vertical Reference	Mean Sea Level	Section Azimuth	95.57°

REFERENCE WELLPATH IDENTIFICATION			
Operator	NOBLE ENERGY, INC	Well	Foose State A17-627
Field	WELD COUNTY (NOBLE NAD 83 GRID)	API/Legal	05-123-52162
Facility	SEC.18-T06N-R64W	Wellbore	Foose State A17-627 AWB
Slot	SLOT#07 Foose State A17-627 (2348'FSL & 724'FEL,SEC.18)		

WELLPATH DATA (184 stations) † = interpolated, ‡ = extrapolated station

MD [ft]	Inclination [°]	Azimuth [°]	TVD [ft]	Vert Sect [ft]	North [ft]	East [ft]	Latitude	Longitude	DLS [°/100ft]	Comments
0.00†	0.000	317.650	0.00	0.00	0.00	0.00	40.4851600	-104.5863200	0.00	
29.00	0.000	317.650	29.00	0.00	0.00	0.00	40.4851600	-104.5863200	0.00	
161.00	0.750	317.650	161.00	-0.64	0.64	-0.58	40.4851618	-104.5863221	0.57	First BH MWD Survey
252.00	0.730	312.950	251.99	-1.54	1.47	-1.41	40.4851641	-104.5863250	0.07	
342.00	0.650	310.330	341.98	-2.42	2.19	-2.22	40.4851661	-104.5863279	0.10	
436.00	0.710	307.820	435.98	-3.35	2.90	-3.08	40.4851680	-104.5863310	0.07	
531.00	0.610	305.890	530.97	-4.28	3.55	-3.96	40.4851699	-104.5863341	0.11	
626.00	0.740	313.020	625.96	-5.21	4.27	-4.82	40.4851719	-104.5863372	0.16	
721.00	0.820	325.710	720.95	-6.13	5.25	-5.65	40.4851746	-104.5863401	0.20	
816.00	0.740	319.450	815.95	-7.01	6.28	-6.43	40.4851774	-104.5863429	0.12	
911.00	0.670	326.760	910.94	-7.80	7.21	-7.13	40.4851800	-104.5863454	0.12	
1006.00	0.610	324.880	1005.93	-8.48	8.09	-7.73	40.4851824	-104.5863475	0.07	
1101.00	0.620	329.960	1100.93	-9.11	8.94	-8.28	40.4851848	-104.5863494	0.06	
1196.00	0.560	335.140	1195.92	-9.64	9.81	-8.73	40.4851872	-104.5863510	0.08	
1291.00	0.460	331.990	1290.92	-10.09	10.57	-9.10	40.4851893	-104.5863523	0.11	
1385.00	0.460	341.600	1384.91	-10.45	11.26	-9.40	40.4851912	-104.5863534	0.08	
1480.00	0.420	343.410	1479.91	-10.73	11.96	-9.62	40.4851931	-104.5863541	0.04	
1575.00	0.380	352.340	1574.91	-10.94	12.60	-9.76	40.4851949	-104.5863546	0.08	
1670.00	0.460	3.360	1669.91	-11.02	13.29	-9.78	40.4851968	-104.5863547	0.12	
1765.00	0.580	359.240	1764.90	-11.09	14.16	-9.76	40.4851991	-104.5863546	0.13	
1860.00	0.510	356.270	1859.90	-11.21	15.06	-9.80	40.4852016	-104.5863547	0.08	
1999.00	2.530	166.300	1998.86	-10.30	12.69	-9.11	40.4851951	-104.5863523	2.18	
2094.00	4.090	162.640	2093.70	-8.29	7.42	-7.60	40.4851806	-104.5863471	1.66	
2189.00	6.140	164.100	2188.32	-5.11	-0.70	-5.20	40.4851582	-104.5863387	2.16	
2283.00	8.180	163.220	2281.58	-0.72	-11.94	-1.89	40.4851273	-104.5863272	2.17	
2378.00	9.910	163.640	2375.39	4.90	-26.25	2.36	40.4850879	-104.5863125	1.82	
2473.00	10.100	163.550	2468.95	11.08	-42.08	7.02	40.4850443	-104.5862963	0.20	
2567.00	12.060	163.240	2561.19	17.90	-59.39	12.19	40.4849966	-104.5862784	2.09	
2662.00	14.060	163.600	2653.73	25.99	-79.97	18.31	40.4849400	-104.5862571	2.11	
2756.00	16.050	163.610	2744.50	35.12	-103.39	25.20	40.4848755	-104.5862332	2.12	
2851.00	16.270	163.560	2835.75	45.02	-128.75	32.67	40.4848057	-104.5862073	0.23	
2946.00	15.400	163.340	2927.14	54.78	-153.60	40.06	40.4847373	-104.5861817	0.92	
3040.00	15.920	163.250	3017.65	64.40	-177.90	47.35	40.4846704	-104.5861564	0.55	
3135.00	15.940	163.470	3109.00	74.26	-202.89	54.82	40.4846016	-104.5861305	0.07	
3229.00	15.080	163.470	3199.58	83.71	-226.98	61.97	40.4845352	-104.5861057	0.91	
3329.00	15.010	164.060	3296.15	93.36	-251.91	69.22	40.4844666	-104.5860805	0.17	
3419.00	15.110	163.730	3383.06	101.99	-274.37	75.71	40.4844048	-104.5860580	0.15	
3513.00	13.740	163.480	3474.09	110.75	-296.84	82.32	40.4843429	-104.5860351	1.46	
3608.00	13.220	163.600	3566.48	119.06	-318.07	88.59	40.4842845	-104.5860133	0.55	
3703.00	16.360	163.200	3658.32	128.22	-341.31	95.53	40.4842205	-104.5859892	3.31	
3797.00	16.290	163.030	3748.53	138.31	-366.59	103.20	40.4841509	-104.5859626	0.09	
3892.00	16.170	162.810	3839.74	148.54	-391.97	111.00	40.4840810	-104.5859355	0.14	
3987.00	16.300	163.300	3930.95	158.71	-417.38	118.74	40.4840111	-104.5859086	0.20	
4081.00	15.950	163.400	4021.25	168.58	-442.39	126.22	40.4839422	-104.5858827	0.37	
4176.00	16.050	163.080	4112.57	178.53	-467.46	133.77	40.4838732	-104.5858564	0.14	

REFERENCE WELLPATH IDENTIFICATION

Operator	NOBLE ENERGY, INC	Well	Foose State A17-627
Field	WELD COUNTY (NOBLE NAD 83 GRID)	API/Legal	05-123-52162
Facility	SEC.18-T06N-R64W	Wellbore	Foose State A17-627 AWB
Slot	SLOT#07 Foose State A17-627 (2348'FSL & 724'FEL,SEC.18)		

WELLPATH DATA (184 stations) † = interpolated, ‡ = extrapolated station

MD [ft]	Inclination [°]	Azimuth [°]	TVD [ft]	Vert Sect [ft]	North [ft]	East [ft]	Latitude	Longitude	DLS [°/100ft]	Comments
4270.00	15.990	164.030	4202.92	188.26	-492.34	141.12	40.4838047	-104.5858310	0.29	
4365.00	16.100	164.310	4294.22	197.84	-517.61	148.28	40.4837351	-104.5858062	0.14	
4460.00	15.880	164.440	4385.55	207.30	-542.81	155.33	40.4836658	-104.5857818	0.23	
4554.00	16.170	164.270	4475.89	216.69	-567.80	162.33	40.4835970	-104.5857575	0.31	
4649.00	15.980	164.040	4567.18	226.30	-593.10	169.51	40.4835273	-104.5857326	0.21	
4744.00	15.950	165.050	4658.52	235.67	-618.29	176.47	40.4834580	-104.5857085	0.29	
4838.00	16.040	165.080	4748.88	244.75	-643.31	183.15	40.4833891	-104.5856855	0.10	
4933.00	16.070	165.150	4840.17	253.93	-668.70	189.90	40.4833192	-104.5856622	0.04	
5028.00	15.080	165.610	4931.68	262.74	-693.38	196.34	40.4832513	-104.5856399	1.05	
5122.00	15.980	164.740	5022.25	271.51	-717.71	202.78	40.4831843	-104.5856177	0.99	
5217.00	14.560	165.030	5113.89	280.35	-741.86	209.31	40.4831179	-104.5855951	1.50	
5311.00	14.440	164.970	5204.90	288.62	-764.60	215.40	40.4830553	-104.5855740	0.13	
5406.00	14.820	163.890	5296.82	297.28	-787.71	221.84	40.4829917	-104.5855517	0.49	
5501.00	15.680	164.280	5388.47	306.43	-811.74	228.69	40.4829255	-104.5855280	0.91	
5595.00	15.780	164.310	5478.95	315.68	-836.27	235.59	40.4828580	-104.5855041	0.11	
5690.00	15.630	164.500	5570.41	324.96	-861.04	242.51	40.4827898	-104.5854802	0.17	
5785.00	15.850	164.740	5661.84	334.18	-885.89	249.34	40.4827214	-104.5854565	0.24	
5879.00	14.840	164.310	5752.49	343.11	-909.86	255.97	40.4826554	-104.5854336	1.08	
5974.00	15.590	164.630	5844.16	352.08	-933.89	262.65	40.4825893	-104.5854105	0.79	
6068.00	16.880	164.200	5934.41	361.57	-959.20	269.71	40.4825196	-104.5853860	1.38	
6163.00	17.120	164.890	6025.26	371.54	-985.97	277.11	40.4824460	-104.5853604	0.33	
6258.00	17.240	163.530	6116.02	381.76	-1012.97	284.75	40.4823716	-104.5853340	0.44	
6352.00	16.770	137.260	6206.04	397.13	-1036.32	297.92	40.4823072	-104.5852875	8.12	
6447.00	17.350	133.520	6296.87	418.54	-1056.14	317.49	40.4822522	-104.5852179	1.31	
6542.00	25.020	118.590	6385.44	448.27	-1075.55	345.47	40.4821981	-104.5851180	9.81	
6636.00	34.970	114.520	6466.76	492.15	-1096.30	387.54	40.4821400	-104.5849676	10.80	
6731.00	41.950	117.170	6541.11	547.50	-1122.13	440.63	40.4820676	-104.5847777	7.55	
6825.00	51.240	114.540	6605.64	611.52	-1151.77	502.06	40.4819845	-104.5845580	10.09	
6920.00	55.910	105.750	6662.10	685.40	-1177.87	573.74	40.4819108	-104.5843013	8.91	
7015.00	63.620	97.510	6709.96	766.87	-1194.16	654.02	40.4818639	-104.5840133	11.04	
7109.00	72.650	93.250	6744.95	854.00	-1202.23	740.76	40.4818393	-104.5837018	10.48	
7204.00	81.970	89.370	6765.80	946.29	-1204.28	833.30	40.4818310	-104.5833693	10.59	
7299.00	89.050	88.320	6773.23	1040.29	-1202.37	927.93	40.4818335	-104.5830291	7.53	
7304.28†	89.091	88.393	6773.32	1045.53	-1202.22	933.20	40.4818338	-104.5830101	1.59	Cross 200' Hardline (1131'FSL & 200'FWL,SEC. 17)
7307.00†	89.112	88.431	6773.36	1048.22	-1202.15	935.92	40.4818339	-104.5830003	1.59	Shallowest MD for Perf
7393.00	89.780	89.620	6774.19	1133.66	-1200.68	1021.90	40.4818355	-104.5826912	1.59	
7583.00	89.720	89.260	6775.02	1322.57	-1198.83	1211.89	40.4818352	-104.5820082	0.19	
7677.00	90.340	89.820	6774.97	1416.05	-1198.07	1305.89	40.4818346	-104.5816703	0.89	
7772.00	89.720	89.890	6774.92	1510.57	-1197.83	1400.89	40.4818326	-104.5813288	0.66	
7867.00	89.850	89.760	6775.28	1605.10	-1197.54	1495.89	40.4818307	-104.5809873	0.19	
7961.00	89.850	89.530	6775.53	1698.59	-1196.96	1589.89	40.4818296	-104.5806494	0.24	
8056.00	89.850	89.590	6775.77	1793.07	-1196.23	1684.88	40.4818289	-104.5803079	0.06	
8151.00	89.820	89.430	6776.05	1887.54	-1195.42	1779.88	40.4818284	-104.5799664	0.17	
8245.00	89.750	89.570	6776.40	1981.01	-1194.60	1873.87	40.4818280	-104.5796285	0.17	
8340.00	89.720	89.570	6776.84	2075.49	-1193.88	1968.87	40.4818272	-104.5792870	0.03	

REFERENCE WELLPATH IDENTIFICATION			
Operator	NOBLE ENERGY, INC	Well	Foose State A17-627
Field	WELD COUNTY (NOBLE NAD 83 GRID)	API/Legal	05-123-52162
Facility	SEC.18-T06N-R64W	Wellbore	Foose State A17-627 AWB
Slot	SLOT#07 Foose State A17-627 (2348'FSL & 724'FEL,SEC.18)		

WELLPATH DATA (184 stations)

MD [ft]	Inclination [°]	Azimuth [°]	TVD [ft]	Vert Sect [ft]	North [ft]	East [ft]	Latitude	Longitude	DLS ["/100ft]	Comments
8435.00	89.720	89.480	6777.30	2169.96	-1193.10	2063.87	40.4818267	-104.5789455	0.09	
8530.00	89.820	89.740	6777.69	2264.44	-1192.45	2158.86	40.4818258	-104.5786040	0.29	
8624.00	89.780	89.320	6778.01	2357.92	-1191.68	2252.86	40.4818252	-104.5782661	0.45	
8719.00	89.850	89.340	6778.32	2452.36	-1190.57	2347.85	40.4818255	-104.5779246	0.08	
8814.00	89.850	89.420	6778.57	2546.80	-1189.54	2442.85	40.4818256	-104.5775831	0.08	
8909.00	90.090	89.320	6778.62	2641.25	-1188.49	2537.84	40.4818258	-104.5772416	0.27	
9003.00	90.710	89.720	6777.96	2734.72	-1187.71	2631.83	40.4818253	-104.5769037	0.78	
9098.00	90.250	89.140	6777.17	2829.17	-1186.76	2726.83	40.4818251	-104.5765623	0.78	
9193.00	90.220	89.660	6776.78	2923.62	-1185.77	2821.82	40.4818252	-104.5762208	0.55	
9287.00	90.370	89.250	6776.29	3017.08	-1184.87	2915.81	40.4818249	-104.5758829	0.46	
9382.00	90.310	89.770	6775.73	3111.55	-1184.06	3010.81	40.4818244	-104.5755414	0.55	
9477.00	90.340	89.230	6775.19	3206.01	-1183.23	3105.80	40.4818240	-104.5751999	0.57	
9572.00	90.180	89.340	6774.76	3300.44	-1182.05	3200.79	40.4818245	-104.5748584	0.20	
9666.00	90.340	89.610	6774.33	3393.91	-1181.18	3294.79	40.4818242	-104.5745205	0.33	
9856.00	90.340	89.480	6773.21	3582.86	-1179.68	3484.78	40.4818229	-104.5738375	0.07	
9950.00	89.850	89.640	6773.05	3676.34	-1178.95	3578.78	40.4818222	-104.5734996	0.55	
10045.00	89.910	89.530	6773.25	3770.82	-1178.27	3673.77	40.4818214	-104.5731581	0.13	
10139.00	89.850	89.500	6773.45	3864.29	-1177.47	3767.77	40.4818208	-104.5728202	0.07	
10234.00	90.180	89.740	6773.42	3958.78	-1176.84	3862.77	40.4818198	-104.5724787	0.43	
10329.00	90.150	89.680	6773.15	4053.29	-1176.36	3957.77	40.4818184	-104.5721372	0.07	
10518.00	90.030	89.590	6772.85	4241.27	-1175.16	4146.76	40.4818163	-104.5714578	0.08	
10613.00	90.180	89.510	6772.68	4335.75	-1174.41	4241.76	40.4818156	-104.5711163	0.18	
10707.00	90.060	89.590	6772.48	4429.23	-1173.67	4335.76	40.4818149	-104.5707784	0.15	
10802.00	89.970	89.600	6772.45	4523.71	-1173.00	4430.75	40.4818141	-104.5704369	0.10	
10897.00	89.880	89.630	6772.58	4618.20	-1172.36	4525.75	40.4818131	-104.5700954	0.10	
10992.00	89.660	89.430	6772.96	4712.67	-1171.58	4620.75	40.4818125	-104.5697539	0.31	
11086.00	90.520	89.600	6772.81	4806.14	-1170.79	4714.74	40.4818120	-104.5694160	0.93	
11181.00	90.000	89.510	6772.38	4900.62	-1170.05	4809.74	40.4818112	-104.5690745	0.56	
11276.00	89.970	89.580	6772.41	4995.09	-1169.29	4904.74	40.4818106	-104.5687330	0.08	
11370.00	89.910	89.410	6772.50	5088.57	-1168.47	4998.73	40.4818101	-104.5683951	0.19	
11465.00	89.880	89.590	6772.68	5183.03	-1167.64	5093.73	40.4818097	-104.5680536	0.19	
11560.00	89.910	89.540	6772.85	5277.51	-1166.92	5188.73	40.4818089	-104.5677121	0.06	
11654.00	89.880	89.570	6773.03	5370.99	-1166.19	5282.72	40.4818082	-104.5673742	0.05	
11749.00	89.880	89.750	6773.22	5465.49	-1165.62	5377.72	40.4818070	-104.5670327	0.19	
11844.00	89.850	89.450	6773.45	5559.97	-1164.96	5472.72	40.4818061	-104.5666912	0.32	
11938.00	89.910	89.610	6773.64	5653.45	-1164.19	5566.71	40.4818055	-104.5663533	0.18	
12033.00	89.880	89.540	6773.82	5747.93	-1163.48	5661.71	40.4818047	-104.5660118	0.08	
12128.00	90.150	89.550	6773.79	5842.40	-1162.73	5756.71	40.4818040	-104.5656703	0.28	
12223.00	89.970	89.630	6773.69	5936.89	-1162.05	5851.71	40.4818031	-104.5653288	0.21	
12317.00	89.820	89.380	6773.87	6030.36	-1161.24	5945.70	40.4818026	-104.5649909	0.31	
12412.00	89.880	89.430	6774.12	6124.81	-1160.25	6040.70	40.4818026	-104.5646494	0.08	
12506.00	89.970	89.550	6774.24	6218.28	-1159.41	6134.69	40.4818022	-104.5643115	0.16	
12601.00	90.090	88.860	6774.19	6312.69	-1158.09	6229.68	40.4818030	-104.5639700	0.74	
12696.00	90.030	88.630	6774.09	6407.02	-1156.01	6324.66	40.4818060	-104.5636285	0.25	
12790.00	89.880	88.500	6774.16	6500.32	-1153.66	6418.63	40.4818097	-104.5632907	0.21	

REFERENCE WELLPATH IDENTIFICATION			
Operator	NOBLE ENERGY, INC	Well	Foose State A17-627
Field	WELD COUNTY (NOBLE NAD 83 GRID)	API/Legal	05-123-52162
Facility	SEC.18-T06N-R64W	Wellbore	Foose State A17-627 AWB
Slot	SLOT#07 Foose State A17-627 (2348'FSL & 724'FEL,SEC.18)		

WELLPATH DATA (184 stations)

MD [ft]	Inclination [°]	Azimuth [°]	TVD [ft]	Vert Sect [ft]	North [ft]	East [ft]	Latitude	Longitude	DLS [°/100ft]	Comments
12885.00	89.910	88.490	6774.34	6594.59	-1151.17	6513.60	40.4818138	-104.5629492	0.03	
12980.00	89.940	88.500	6774.46	6688.87	-1148.67	6608.56	40.4818179	-104.5626078	0.03	
13074.00	89.880	88.640	6774.61	6782.17	-1146.32	6702.54	40.4818216	-104.5622699	0.16	
13169.00	90.180	88.440	6774.56	6876.45	-1143.90	6797.50	40.4818255	-104.5619284	0.38	
13264.00	90.000	88.490	6774.41	6970.72	-1141.36	6892.47	40.4818297	-104.5615870	0.20	
13358.00	89.910	88.600	6774.48	7064.02	-1138.97	6986.44	40.4818336	-104.5612491	0.15	
13453.00	89.970	88.420	6774.58	7158.30	-1136.50	7081.41	40.4818376	-104.5609076	0.20	
13548.00	89.850	88.400	6774.73	7252.56	-1133.87	7176.37	40.4818420	-104.5605662	0.13	
13643.00	90.150	88.420	6774.73	7346.81	-1131.23	7271.33	40.4818465	-104.5602247	0.32	
13737.00	90.220	88.490	6774.43	7440.09	-1128.70	7365.30	40.4818507	-104.5598869	0.11	
13832.00	90.280	88.430	6774.01	7534.36	-1126.14	7460.26	40.4818550	-104.5595454	0.09	
13926.00	90.000	88.420	6773.79	7627.63	-1123.56	7554.23	40.4818593	-104.5592076	0.30	
14021.00	89.910	88.500	6773.86	7721.90	-1121.01	7649.19	40.4818636	-104.5588661	0.13	
14116.00	89.780	89.170	6774.12	7816.24	-1119.07	7744.17	40.4818661	-104.5585246	0.72	
14211.00	90.090	89.260	6774.22	7910.66	-1117.77	7839.16	40.4818669	-104.5581831	0.34	
14305.00	89.820	89.300	6774.30	8004.09	-1116.59	7933.16	40.4818674	-104.5578452	0.29	
14400.00	89.750	89.520	6774.65	8098.54	-1115.61	8028.15	40.4818673	-104.5575037	0.24	
14495.00	89.820	89.460	6775.01	8193.00	-1114.77	8123.15	40.4818669	-104.5571622	0.10	
14589.00	89.880	89.510	6775.26	8286.47	-1113.92	8217.14	40.4818665	-104.5568243	0.08	
14684.00	89.940	89.180	6775.41	8380.91	-1112.84	8312.14	40.4818667	-104.5564828	0.35	
14779.00	89.750	89.490	6775.66	8475.35	-1111.73	8407.13	40.4818669	-104.5561413	0.38	
14873.00	89.940	89.410	6775.92	8568.81	-1110.83	8501.12	40.4818666	-104.5558034	0.22	
14968.00	89.970	89.430	6775.99	8663.27	-1109.87	8596.12	40.4818665	-104.5554619	0.04	
15062.00	90.060	89.560	6775.97	8756.74	-1109.04	8690.12	40.4818660	-104.5551240	0.17	
15157.00	89.910	89.410	6775.99	8851.20	-1108.19	8785.11	40.4818656	-104.5547825	0.22	
15252.00	89.880	89.700	6776.17	8945.68	-1107.45	8880.11	40.4818648	-104.5544410	0.31	
15347.00	89.820	89.140	6776.42	9040.13	-1106.49	8975.10	40.4818647	-104.5540995	0.59	
15441.00	89.780	89.400	6776.74	9133.56	-1105.29	9069.09	40.4818652	-104.5537616	0.28	
15536.00	89.910	89.220	6777.00	9228.00	-1104.15	9164.09	40.4818656	-104.5534201	0.23	
15631.00	90.060	89.540	6777.03	9322.44	-1103.12	9259.08	40.4818656	-104.5530786	0.37	
15725.00	89.820	89.480	6777.12	9415.92	-1102.31	9353.08	40.4818651	-104.5527407	0.26	
15820.00	89.660	89.770	6777.56	9510.40	-1101.69	9448.07	40.4818640	-104.5523992	0.35	
15915.00	90.430	90.030	6777.48	9604.94	-1101.53	9543.07	40.4818617	-104.5520578	0.86	
16009.00	89.690	90.080	6777.38	9698.50	-1101.62	9637.07	40.4818587	-104.5517199	0.79	
16104.00	90.000	90.060	6777.64	9793.06	-1101.73	9732.07	40.4818556	-104.5513784	0.33	
16199.00	89.780	87.250	6777.82	9887.36	-1099.50	9827.04	40.4818589	-104.5510370	2.97	
16294.00	89.380	88.790	6778.52	9981.53	-1096.22	9921.97	40.4818651	-104.5506956	1.67	
16388.00	90.180	90.090	6778.88	10074.99	-1095.30	10015.97	40.4818649	-104.5503577	1.62	
16483.00	89.690	89.450	6778.99	10169.50	-1094.92	10110.96	40.4818631	-104.5500162	0.85	
16578.00	90.710	90.000	6778.66	10264.01	-1094.47	10205.96	40.4818616	-104.5496747	1.22	
16672.00	90.520	89.410	6777.65	10357.51	-1093.98	10299.95	40.4818601	-104.5493368	0.66	
16767.00	89.750	88.850	6777.42	10451.91	-1092.54	10394.94	40.4818613	-104.5489953	1.00	
16862.00	90.310	89.440	6777.37	10546.31	-1091.12	10489.93	40.4818624	-104.5486538	0.86	
16957.00	90.250	89.440	6776.91	10640.76	-1090.19	10584.93	40.4818622	-104.5483124	0.06	
17146.00	90.180	89.190	6776.20	10828.64	-1087.93	10773.91	40.4818628	-104.5476330	0.14	

REFERENCE WELLPATH IDENTIFICATION

Operator	NOBLE ENERGY, INC	Well	Foose State A17-627
Field	WELD COUNTY (NOBLE NAD 83 GRID)	API/Legal	05-123-52162
Facility	SEC.18-T06N-R64W	Wellbore	Foose State A17-627 AWB
Slot	SLOT#07 Foose State A17-627 (2348'FSL & 724'FEL,SEC.18)		

WELLPATH DATA (184 stations) † = interpolated, ‡ = extrapolated station

MD [ft]	Inclination [°]	Azimuth [°]	TVD [ft]	Vert Sect [ft]	North [ft]	East [ft]	Latitude	Longitude	DLS [°/100ft]	Comments
17241.00	90.090	89.400	6775.98	10923.07	-1086.76	10868.90	40.4818632	-104.5472915	0.24	
17335.00	89.970	89.660	6775.93	11016.55	-1085.99	10962.90	40.4818625	-104.5469535	0.30	
17430.00	89.170	89.390	6776.64	11111.01	-1085.21	11057.89	40.4818619	-104.5466121	0.89	Last BH MWD Survey
17483.00‡	89.170	89.390	6777.41	11163.70	-1084.64	11110.88	40.4818619	-104.5464216	0.00	Projection to Bit (1150'FSL & 200'FEL,SEC. 16)

TARGETS

Name	TVD [ft]	North [ft]	East [ft]	Grid East [US ft]	Grid North [US ft]	Latitude	Longitude	Shape
OGDP 1 SEC.16-T06N-R64W	-38.00	7369.34	235.54	3254380.72	1428262.61	40.5053800	-104.5852000	polygon
2D Polygon: dimensions not calculated								
OGDP 1 SEC.17-T06N-R64W	-38.00	7369.34	235.54	3254380.72	1428262.61	40.5053800	-104.5852000	polygon
2D Polygon: dimensions not calculated								
OGDP 1 SEC.18-T06N-R64W	-38.00	7369.34	235.54	3254380.72	1428262.61	40.5053800	-104.5852000	polygon
2D Polygon: dimensions not calculated								
Foose State A17-627 BHL Rev-1 (1151'FSL & 200'FEL,SEC.16)	6777.00	-1083.97	11111.26	3265256.03	1419809.61	40.4818637	-104.5464202	point
Foose State A17-627 LP Rev-1 (1145'FSL & 200'FWL,SEC.17)	6777.00	-1187.88	933.20	3255078.35	1419705.71	40.4818732	-104.5830096	point
Foose State A17-627 BHL Rev-2 (1151'FSL & 200'FEL,SEC.16)	6778.00	-1083.97	11111.26	3265256.03	1419809.61	40.4818637	-104.5464202	point
Foose State A17-627 LP Rev-2 (1145'FSL & 200'FWL,SEC.17)	6778.00	-1187.88	933.20	3255078.35	1419705.71	40.4818732	-104.5830096	point
DP 135 Hardlines (300'FNL/FSL&200'FEL/FWL)	7002.00	-2.32	-225.31	3253919.89	1420891.22	40.4851600	-104.5871300	polygon
2D Polygon: dimensions not calculated								

WELLPATH COMPOSITION - Ref Wellbore: Foose State A17-627 AWB Ref Wellpath: Foose State A17-627 AWP

Start MD [ft]	End MD [ft]	Positional Uncertainty Model	Log Name/Comment	Wellbore	Survey Date
29.00	1860.00	OWSG MWD rev2 (MS+IFR1)	13.5" EVO Surface OWSG MWD rev2 (MS + IFR1) <161'-1860'>	Foose State A17-627 AWB	10/27/2023
1860.00	17483.00	OWSG MWD rev2 (MS+IFR1)	8.5" Lucida OWSG MWD rev2 (MS+IFR1) <1999'-17430'>	Foose State A17-627 AWB	11/3/2023

REFERENCE WELLPATH IDENTIFICATION			
Operator	NOBLE ENERGY, INC	Well	Foose State A17-627
Field	WELD COUNTY (NOBLE NAD 83 GRID)	API/Legal	05-123-52162
Facility	SEC.18-T06N-R64W	Wellbore	Foose State A17-627 AWB
Slot	SLOT#07 Foose State A17-627 (2348'FSL & 724'FEL,SEC.18)		

WELLPATH COMMENTS				
MD [ft]	Inclination [°]	Azimuth [°]	TVD [ft]	Comment
161.00	0.750	317.650	161.00	First BH MWD Survey
7304.28	89.091	88.393	6773.32	Cross 200' Hardline (1131'FSL & 200'FWL,SEC. 17)
7307.00	89.112	88.431	6773.36	Shallowest MD for Perf
17430.00	89.170	89.390	6776.64	Last BH MWD Survey
17483.00	89.170	89.390	6777.41	Projection to Bit (1150'FSL & 200'FEL,SEC. 16)