

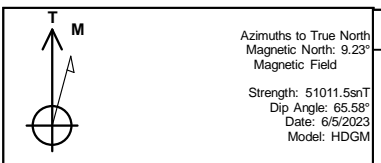


REFERENCE INFORMATION

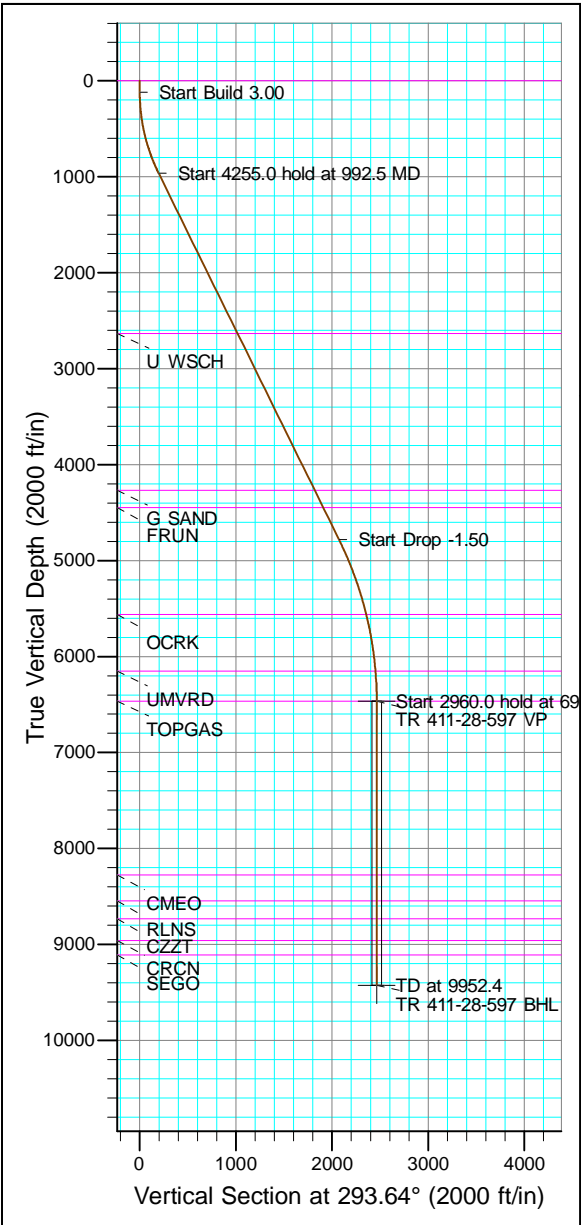
Co-ordinate (N/E) Reference: Well TR 411-28-597 - Slot TR 411-28-597, True North
Vertical (TVD) Reference: RKB @ 8513.0ft
Section (VS) Reference: Slot - TR 411-28-597(0.0N, 0.0E)
Measured Depth Reference: RKB @ 8513.0ft
Calculation Method: Minimum Curvature



Project: Garfield County, CO (Nad 83)
Site: TR 32-28-597 Pad
Well: TR 411-28-597
Wellbore: OWB
Design: Plan



WELL DETAILS: TR 411-28-597					
+N/-S	+E/-W	Northing	Ground Level: 8483.0 Easting	Latitude	Longitude
0.0	0.0	1650723.600	2216042.200	39.587071	-108.282051
				Slot	TR 411-28-597

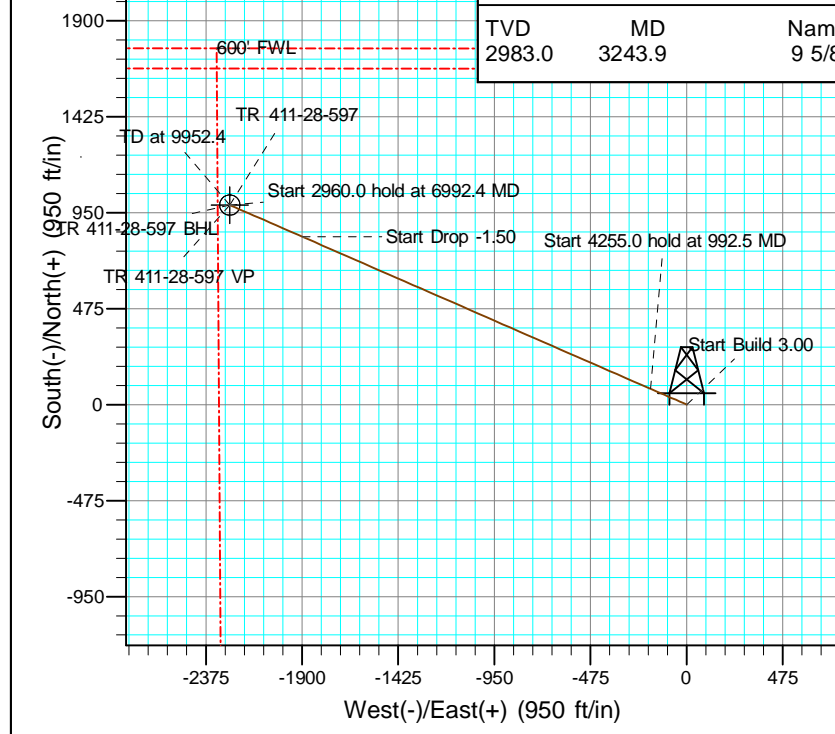
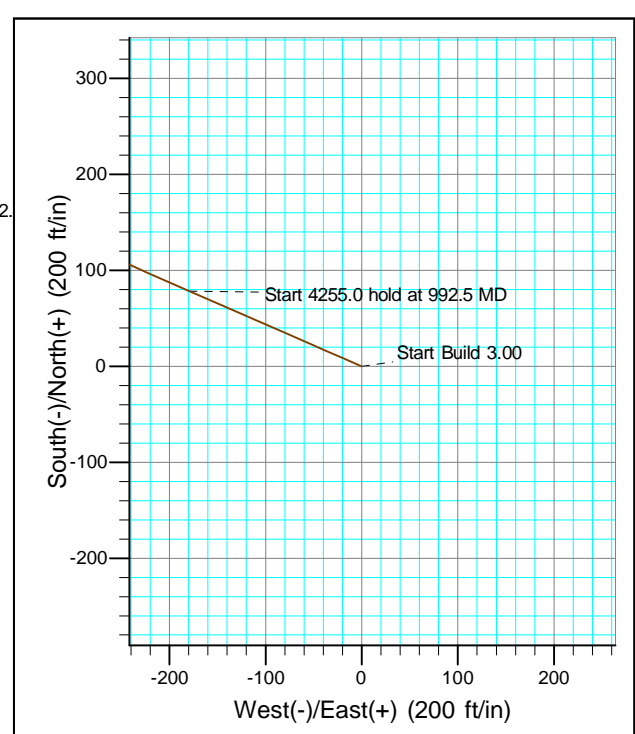


ANNOTATIONS									
TVD	MD	Inc	Azi	+N/-S	+E/-W	Vsect	Departure	Annotation	
120.0	120.0	0.00	0.00	0.0	0.0	0.0	0.0	Start Build 3.00	
962.4	992.5	26.17	293.64	78.5	-179.4	195.8	195.8	Start 4255.0 hold at 992.5 MD	
4781.2	5247.5	26.17	293.64	831.2	-1898.7	2072.7	2072.7	Start Drop -1.50	
6466.0	6992.4	0.00	0.00	988.2	-2257.5	2464.4	2464.4	Start 2960.0 hold at 6992.4 MD	
9426.0	9952.4	0.00	0.00	988.2	-2257.5	2464.4	2464.4	TD at 9952.4	

FORMATION TOP DETAILS		
TVDPath	MDPath	Formation
0.0	0.0	GRRV
2633.0	2853.9	U WSCH
4267.0	4674.6	G SAND
4446.0	4874.0	FRUN
5559.0	6076.6	OCRK
6149.0	6675.0	UMVRD
6466.0	6992.4	TOPGAS
8275.0	8801.4	CMEO
8545.0	9071.4	RLNS
8732.0	9258.4	CZZT
8960.0	9486.4	CRCN
9110.0	9636.4	SEGO

DESIGN TARGET DETAILS									
Name	TVD	+N/-S	+E/-W	Northing	Easting	Latitude	Longitude	Shape	
VP	6466.0	988.2	-2257.5	1651780.500	2213816.000	39.589783	-108.290062	Point	
BHL	9426.0	988.2	-2257.5	1651780.500	2213816.000	39.589783	-108.290062	Circle (Radius: 50.0)	
- plan hits target center									

CASING DETAILS		
TVD	MD	Name
2983.0	3243.9	9 5/8"





Terra Energy Partners, LLP

Garfield County, CO (Nad 83)

TR 32-28-597 Pad

TR 411-28-597 - Slot TR 411-28-597

OWB

Plan: Plan

Standard Planning Report

13 June, 2023



Database:	NN	Local Co-ordinate Reference:	Well TR 411-28-597 - Slot TR 411-28-597
Company:	Terra Energy Partners, LLP	TVD Reference:	RKB @ 8513.0ft
Project:	Garfield County, CO (Nad 83)	MD Reference:	RKB @ 8513.0ft
Site:	TR 32-28-597 Pad	North Reference:	True
Well:	TR 411-28-597	Survey Calculation Method:	Minimum Curvature
Wellbore:	OWB		
Design:	Plan		

Project	Garfield County, CO (Nad 83)		
Map System:	US State Plane 1983	System Datum:	Mean Sea Level
Geo Datum:	North American Datum 1983		
Map Zone:	Colorado Central Zone		

Site	TR 32-28-597 Pad, Sec 28, T5S, R97W			
Site Position:		Northing:	1,650,709.300 usft	Latitude: 39.587032
From:	Map	Easting:	2,216,053.200 usft	Longitude: -108.282011
Position Uncertainty:	0.0 ft	Slot Radius:	13-3/16 "	Grid Convergence: -1.75 °

Well	TR 411-28-597 - Slot TR 411-28-597					
Well Position	+N/-S	14.0 ft	Northing:	1,650,723.600 usft	Latitude:	39.587071
	+E/-W	-11.4 ft	Easting:	2,216,042.200 usft	Longitude:	-108.282052
Position Uncertainty		0.0 ft	Wellhead Elevation:	8,513.0 ft	Ground Level:	8,483.0 ft

Wellbore	OWB				
Magnetics	Model Name	Sample Date	Declination (°)	Dip Angle (°)	Field Strength (nT)
	HDGM	6/5/2023	9.23	65.58	51,012

Design	Plan			
Audit Notes:				
Version:	Phase:	PROTOTYPE	Tie On Depth:	0.0
Vertical Section:	Depth From (TVD)	+N/-S	+E/-W	Direction
	(ft)	(ft)	(ft)	(°)
	0.0	0.0	0.0	293.64

Plan Sections										
Measured Depth (ft)	Inclination (°)	Azimuth (°)	Vertical Depth (ft)	+N/-S (ft)	+E/-W (ft)	Dogleg Rate (°/100usft)	Build Rate (°/100usft)	Turn Rate (°/100usft)	TFO (°)	Target
0.0	0.00	0.00	0.0	0.0	0.0	0.00	0.00	0.00	0.00	
120.0	0.00	0.00	120.0	0.0	0.0	0.00	0.00	0.00	0.00	
992.5	26.17	293.64	962.4	78.5	-179.4	3.00	3.00	0.00	293.64	
5,247.5	26.17	293.64	4,781.2	831.2	-1,898.7	0.00	0.00	0.00	0.00	
6,992.4	0.00	0.00	6,466.0	988.2	-2,257.5	1.50	-1.50	0.00	180.00	
9,952.4	0.00	0.00	9,426.0	988.2	-2,257.5	0.00	0.00	0.00	0.00	TR 411-28-597 BHL

Database:	NN	Local Co-ordinate Reference:	Well TR 411-28-597 - Slot TR 411-28-597
Company:	Terra Energy Partners, LLP	TVD Reference:	RKB @ 8513.0ft
Project:	Garfield County, CO (Nad 83)	MD Reference:	RKB @ 8513.0ft
Site:	TR 32-28-597 Pad	North Reference:	True
Well:	TR 411-28-597	Survey Calculation Method:	Minimum Curvature
Wellbore:	OWB		
Design:	Plan		

Planned Survey									
Measured Depth (ft)	Inclination (°)	Azimuth (°)	Vertical Depth (ft)	+N/-S (ft)	+E/-W (ft)	Vertical Section (ft)	Dogleg Rate (°/100usft)	Build Rate (°/100usft)	Turn Rate (°/100usft)
0.0	0.00	0.00	0.0	0.0	0.0	0.0	0.00	0.00	0.00
100.0	0.00	0.00	100.0	0.0	0.0	0.0	0.00	0.00	0.00
120.0	0.00	0.00	120.0	0.0	0.0	0.0	0.00	0.00	0.00
Start Build 3.00									
200.0	2.40	293.64	200.0	0.7	-1.5	1.7	3.00	3.00	0.00
300.0	5.40	293.64	299.7	3.4	-7.8	8.5	3.00	3.00	0.00
400.0	8.40	293.64	399.0	8.2	-18.8	20.5	3.00	3.00	0.00
500.0	11.40	293.64	497.5	15.1	-34.5	37.7	3.00	3.00	0.00
600.0	14.40	293.64	595.0	24.1	-55.0	60.0	3.00	3.00	0.00
700.0	17.40	293.64	691.1	35.0	-80.1	87.4	3.00	3.00	0.00
800.0	20.40	293.64	785.7	48.0	-109.7	119.8	3.00	3.00	0.00
900.0	23.40	293.64	878.5	63.0	-143.9	157.1	3.00	3.00	0.00
992.5	26.17	293.64	962.4	78.5	-179.4	195.8	3.00	3.00	0.00
Start 4255.0 hold at 992.5 MD									
1,000.0	26.17	293.64	969.2	79.9	-182.4	199.2	0.00	0.00	0.00
1,100.0	26.17	293.64	1,058.9	97.6	-222.9	243.3	0.00	0.00	0.00
1,200.0	26.17	293.64	1,148.7	115.2	-263.3	287.4	0.00	0.00	0.00
1,300.0	26.17	293.64	1,238.4	132.9	-303.7	331.5	0.00	0.00	0.00
1,400.0	26.17	293.64	1,328.2	150.6	-344.1	375.6	0.00	0.00	0.00
1,500.0	26.17	293.64	1,417.9	168.3	-384.5	419.7	0.00	0.00	0.00
1,600.0	26.17	293.64	1,507.7	186.0	-424.9	463.8	0.00	0.00	0.00
1,700.0	26.17	293.64	1,597.4	203.7	-465.3	507.9	0.00	0.00	0.00
1,800.0	26.17	293.64	1,687.2	221.4	-505.7	552.0	0.00	0.00	0.00
1,900.0	26.17	293.64	1,776.9	239.1	-546.1	596.1	0.00	0.00	0.00
2,000.0	26.17	293.64	1,866.7	256.8	-586.5	640.3	0.00	0.00	0.00
2,100.0	26.17	293.64	1,956.4	274.4	-626.9	684.4	0.00	0.00	0.00
2,200.0	26.17	293.64	2,046.2	292.1	-667.3	728.5	0.00	0.00	0.00
2,300.0	26.17	293.64	2,135.9	309.8	-707.7	772.6	0.00	0.00	0.00
2,400.0	26.17	293.64	2,225.6	327.5	-748.1	816.7	0.00	0.00	0.00
2,500.0	26.17	293.64	2,315.4	345.2	-788.6	860.8	0.00	0.00	0.00
2,600.0	26.17	293.64	2,405.1	362.9	-829.0	904.9	0.00	0.00	0.00
2,700.0	26.17	293.64	2,494.9	380.6	-869.4	949.0	0.00	0.00	0.00
2,800.0	26.17	293.64	2,584.6	398.3	-909.8	993.1	0.00	0.00	0.00
2,900.0	26.17	293.64	2,674.4	415.9	-950.2	1,037.2	0.00	0.00	0.00
3,000.0	26.17	293.64	2,764.1	433.6	-990.6	1,081.3	0.00	0.00	0.00
3,100.0	26.17	293.64	2,853.9	451.3	-1,031.0	1,125.5	0.00	0.00	0.00
3,200.0	26.17	293.64	2,943.6	469.0	-1,071.4	1,169.6	0.00	0.00	0.00
3,300.0	26.17	293.64	3,033.4	486.7	-1,111.8	1,213.7	0.00	0.00	0.00
3,400.0	26.17	293.64	3,123.1	504.4	-1,152.2	1,257.8	0.00	0.00	0.00
3,500.0	26.17	293.64	3,212.9	522.1	-1,192.6	1,301.9	0.00	0.00	0.00
3,600.0	26.17	293.64	3,302.6	539.8	-1,233.0	1,346.0	0.00	0.00	0.00
3,700.0	26.17	293.64	3,392.3	557.5	-1,273.4	1,390.1	0.00	0.00	0.00
3,800.0	26.17	293.64	3,482.1	575.1	-1,313.8	1,434.2	0.00	0.00	0.00
3,900.0	26.17	293.64	3,571.8	592.8	-1,354.3	1,478.3	0.00	0.00	0.00
4,000.0	26.17	293.64	3,661.6	610.5	-1,394.7	1,522.4	0.00	0.00	0.00
4,100.0	26.17	293.64	3,751.3	628.2	-1,435.1	1,566.5	0.00	0.00	0.00
4,200.0	26.17	293.64	3,841.1	645.9	-1,475.5	1,610.7	0.00	0.00	0.00
4,300.0	26.17	293.64	3,930.8	663.6	-1,515.9	1,654.8	0.00	0.00	0.00
4,400.0	26.17	293.64	4,020.6	681.3	-1,556.3	1,698.9	0.00	0.00	0.00
4,500.0	26.17	293.64	4,110.3	699.0	-1,596.7	1,743.0	0.00	0.00	0.00
4,600.0	26.17	293.64	4,200.1	716.6	-1,637.1	1,787.1	0.00	0.00	0.00
4,700.0	26.17	293.64	4,289.8	734.3	-1,677.5	1,831.2	0.00	0.00	0.00
4,800.0	26.17	293.64	4,379.6	752.0	-1,717.9	1,875.3	0.00	0.00	0.00
4,900.0	26.17	293.64	4,469.3	769.7	-1,758.3	1,919.4	0.00	0.00	0.00

Database:	NN	Local Co-ordinate Reference:	Well TR 411-28-597 - Slot TR 411-28-597
Company:	Terra Energy Partners, LLP	TVD Reference:	RKB @ 8513.0ft
Project:	Garfield County, CO (Nad 83)	MD Reference:	RKB @ 8513.0ft
Site:	TR 32-28-597 Pad	North Reference:	True
Well:	TR 411-28-597	Survey Calculation Method:	Minimum Curvature
Wellbore:	OWB		
Design:	Plan		

Planned Survey									
Measured Depth (ft)	Inclination (°)	Azimuth (°)	Vertical Depth (ft)	+N/-S (ft)	+E/-W (ft)	Vertical Section (ft)	Dogleg Rate (°/100usft)	Build Rate (°/100usft)	Turn Rate (°/100usft)
5,000.0	26.17	293.64	4,559.0	787.4	-1,798.7	1,963.5	0.00	0.00	0.00
5,100.0	26.17	293.64	4,648.8	805.1	-1,839.1	2,007.6	0.00	0.00	0.00
5,200.0	26.17	293.64	4,738.5	822.8	-1,879.5	2,051.7	0.00	0.00	0.00
5,247.5	26.17	293.64	4,781.2	831.2	-1,898.7	2,072.7	0.00	0.00	0.00
Start Drop -1.50									
5,300.0	25.39	293.64	4,828.4	840.3	-1,919.7	2,095.5	1.50	-1.50	0.00
5,400.0	23.89	293.64	4,919.3	857.1	-1,957.8	2,137.2	1.50	-1.50	0.00
5,500.0	22.39	293.64	5,011.3	872.8	-1,993.8	2,176.5	1.50	-1.50	0.00
5,600.0	20.89	293.64	5,104.2	887.6	-2,027.6	2,213.4	1.50	-1.50	0.00
5,700.0	19.39	293.64	5,198.1	901.4	-2,059.1	2,247.8	1.50	-1.50	0.00
5,800.0	17.89	293.64	5,292.9	914.2	-2,088.4	2,279.7	1.50	-1.50	0.00
5,900.0	16.39	293.64	5,388.4	926.0	-2,115.4	2,309.2	1.50	-1.50	0.00
6,000.0	14.89	293.64	5,484.7	936.8	-2,140.1	2,336.2	1.50	-1.50	0.00
6,100.0	13.39	293.64	5,581.7	946.6	-2,162.5	2,360.6	1.50	-1.50	0.00
6,200.0	11.89	293.64	5,679.3	955.4	-2,182.5	2,382.5	1.50	-1.50	0.00
6,300.0	10.39	293.64	5,777.4	963.1	-2,200.2	2,401.8	1.50	-1.50	0.00
6,400.0	8.89	293.64	5,876.0	969.9	-2,215.5	2,418.5	1.50	-1.50	0.00
6,500.0	7.39	293.64	5,975.0	975.5	-2,228.5	2,432.7	1.50	-1.50	0.00
6,600.0	5.89	293.64	6,074.3	980.2	-2,239.1	2,444.2	1.50	-1.50	0.00
6,700.0	4.39	293.64	6,173.9	983.8	-2,247.3	2,453.2	1.50	-1.50	0.00
6,800.0	2.89	293.64	6,273.7	986.3	-2,253.1	2,459.5	1.50	-1.50	0.00
6,900.0	1.39	293.64	6,373.6	987.8	-2,256.5	2,463.2	1.50	-1.50	0.00
6,992.4	0.00	0.00	6,466.0	988.2	-2,257.5	2,464.4	1.50	-1.50	0.00
Start 2960.0 hold at 6992.4 MD									
7,000.0	0.00	0.00	6,473.6	988.2	-2,257.5	2,464.4	0.00	0.00	0.00
7,100.0	0.00	0.00	6,573.6	988.2	-2,257.5	2,464.4	0.00	0.00	0.00
7,200.0	0.00	0.00	6,673.6	988.2	-2,257.5	2,464.4	0.00	0.00	0.00
7,300.0	0.00	0.00	6,773.6	988.2	-2,257.5	2,464.4	0.00	0.00	0.00
7,400.0	0.00	0.00	6,873.6	988.2	-2,257.5	2,464.4	0.00	0.00	0.00
7,500.0	0.00	0.00	6,973.6	988.2	-2,257.5	2,464.4	0.00	0.00	0.00
7,600.0	0.00	0.00	7,073.6	988.2	-2,257.5	2,464.4	0.00	0.00	0.00
7,700.0	0.00	0.00	7,173.6	988.2	-2,257.5	2,464.4	0.00	0.00	0.00
7,800.0	0.00	0.00	7,273.6	988.2	-2,257.5	2,464.4	0.00	0.00	0.00
7,900.0	0.00	0.00	7,373.6	988.2	-2,257.5	2,464.4	0.00	0.00	0.00
8,000.0	0.00	0.00	7,473.6	988.2	-2,257.5	2,464.4	0.00	0.00	0.00
8,100.0	0.00	0.00	7,573.6	988.2	-2,257.5	2,464.4	0.00	0.00	0.00
8,200.0	0.00	0.00	7,673.6	988.2	-2,257.5	2,464.4	0.00	0.00	0.00
8,300.0	0.00	0.00	7,773.6	988.2	-2,257.5	2,464.4	0.00	0.00	0.00
8,400.0	0.00	0.00	7,873.6	988.2	-2,257.5	2,464.4	0.00	0.00	0.00
8,500.0	0.00	0.00	7,973.6	988.2	-2,257.5	2,464.4	0.00	0.00	0.00
8,600.0	0.00	0.00	8,073.6	988.2	-2,257.5	2,464.4	0.00	0.00	0.00
8,700.0	0.00	0.00	8,173.6	988.2	-2,257.5	2,464.4	0.00	0.00	0.00
8,800.0	0.00	0.00	8,273.6	988.2	-2,257.5	2,464.4	0.00	0.00	0.00
8,900.0	0.00	0.00	8,373.6	988.2	-2,257.5	2,464.4	0.00	0.00	0.00
9,000.0	0.00	0.00	8,473.6	988.2	-2,257.5	2,464.4	0.00	0.00	0.00
9,100.0	0.00	0.00	8,573.6	988.2	-2,257.5	2,464.4	0.00	0.00	0.00
9,200.0	0.00	0.00	8,673.6	988.2	-2,257.5	2,464.4	0.00	0.00	0.00
9,300.0	0.00	0.00	8,773.6	988.2	-2,257.5	2,464.4	0.00	0.00	0.00
9,400.0	0.00	0.00	8,873.6	988.2	-2,257.5	2,464.4	0.00	0.00	0.00
9,500.0	0.00	0.00	8,973.6	988.2	-2,257.5	2,464.4	0.00	0.00	0.00
9,600.0	0.00	0.00	9,073.6	988.2	-2,257.5	2,464.4	0.00	0.00	0.00
9,700.0	0.00	0.00	9,173.6	988.2	-2,257.5	2,464.4	0.00	0.00	0.00
9,800.0	0.00	0.00	9,273.6	988.2	-2,257.5	2,464.4	0.00	0.00	0.00
9,900.0	0.00	0.00	9,373.6	988.2	-2,257.5	2,464.4	0.00	0.00	0.00

Database:	NN	Local Co-ordinate Reference:	Well TR 411-28-597 - Slot TR 411-28-597
Company:	Terra Energy Partners, LLP	TVD Reference:	RKB @ 8513.0ft
Project:	Garfield County, CO (Nad 83)	MD Reference:	RKB @ 8513.0ft
Site:	TR 32-28-597 Pad	North Reference:	True
Well:	TR 411-28-597	Survey Calculation Method:	Minimum Curvature
Wellbore:	OWB		
Design:	Plan		

Planned Survey									
Measured Depth (ft)	Inclination (°)	Azimuth (°)	Vertical Depth (ft)	+N/-S (ft)	+E/-W (ft)	Vertical Section (ft)	Dogleg Rate (°/100usft)	Build Rate (°/100usft)	Turn Rate (°/100usft)
9,952.4	0.00	0.00	9,426.0	988.2	-2,257.5	2,464.4	0.00	0.00	0.00
TD at 9952.4									

Design Targets									
Target Name - hit/miss target - Shape	Dip Angle (°)	Dip Dir. (°)	TVD (ft)	+N/-S (ft)	+E/-W (ft)	Northing (usft)	Easting (usft)	Latitude	Longitude
TR 411-28-597 VP - plan hits target center - Point	0.00	0.00	6,466.0	988.2	-2,257.5	1,651,780.500	2,213,816.000	39.589783	-108.290062
TR 411-28-597 BHL - plan hits target center - Circle (radius 50.0)	0.00	0.00	9,426.0	988.2	-2,257.5	1,651,780.500	2,213,816.000	39.589783	-108.290062

Casing Points					
Measured Depth (ft)	Vertical Depth (ft)	Name	Casing Diameter (")	Hole Diameter (")	
3,243.9	2,983.0	9 5/8"	9-5/8	12-1/4	

Formations						
Measured Depth (ft)	Vertical Depth (ft)	Name	Lithology	Dip (°)	Dip Direction (°)	
0.0	0.0	GRRV		0.00		
2,853.9	2,633.0	U WSCH		0.00		
4,674.6	4,267.0	G SAND		0.00		
4,874.0	4,446.0	FRUN		0.00		
6,076.6	5,559.0	OCRK		0.00		
6,675.0	6,149.0	UMVRD		0.00		
6,992.4	6,466.0	TOPGAS		0.00		
8,801.4	8,275.0	CME0		0.00		
9,071.4	8,545.0	RLNS		0.00		
9,258.4	8,732.0	CZZT		0.00		
9,486.4	8,960.0	CRCN		0.00		
9,636.4	9,110.0	SEGO		0.00		

Plan Annotations				
Measured Depth (ft)	Vertical Depth (ft)	+N/-S (ft)	+E/-W (ft)	Comment
120.0	120.0	0.0	0.0	Start Build 3.00
992.5	962.4	78.5	-179.4	Start 4255.0 hold at 992.5 MD
5,247.5	4,781.2	831.2	-1,898.7	Start Drop -1.50
6,992.4	6,466.0	988.2	-2,257.5	Start 2960.0 hold at 6992.4 MD
9,952.4	9,426.0	988.2	-2,257.5	TD at 9952.4