

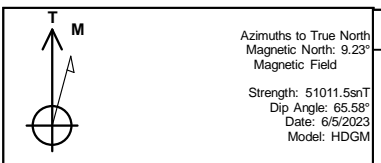


REFERENCE INFORMATION

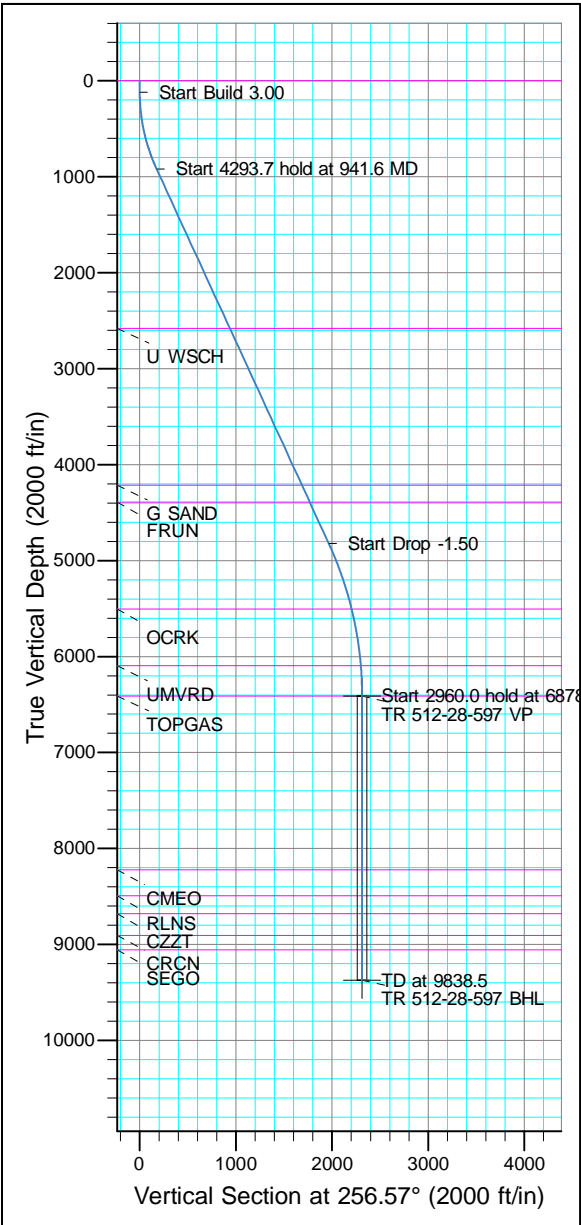
Co-ordinate (N/E) Reference: Well TR 512-28-597 - Slot TR 512-28-597, True North
Vertical (TVD) Reference: RKB @ 30' @ 8513.0ft
Section (VS) Reference: Slot - TR 512-28-597(0.0N, 0.0E)
Measured Depth Reference: RKB @ 30' @ 8513.0ft
Calculation Method: Minimum Curvature



Project: Garfield County, CO (Nad 83)
Site: TR 32-28-597 Pad
Well: TR 512-28-597
Wellbore: OWB
Design: Plan



WELL DETAILS: TR 512-28-597					
+N/-S	+E/-W	Northing	Ground Level: Easting	Latitude	Longitude
0.0	0.0	1650701.100	2216043.700	39.587009	-108.282044
			Slot	TR 512-28-597	

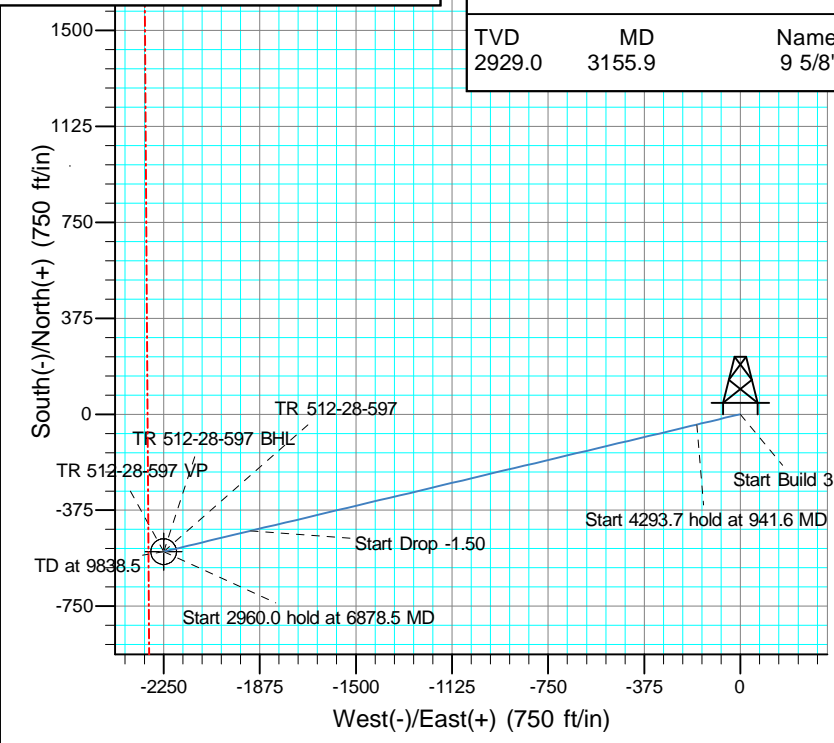
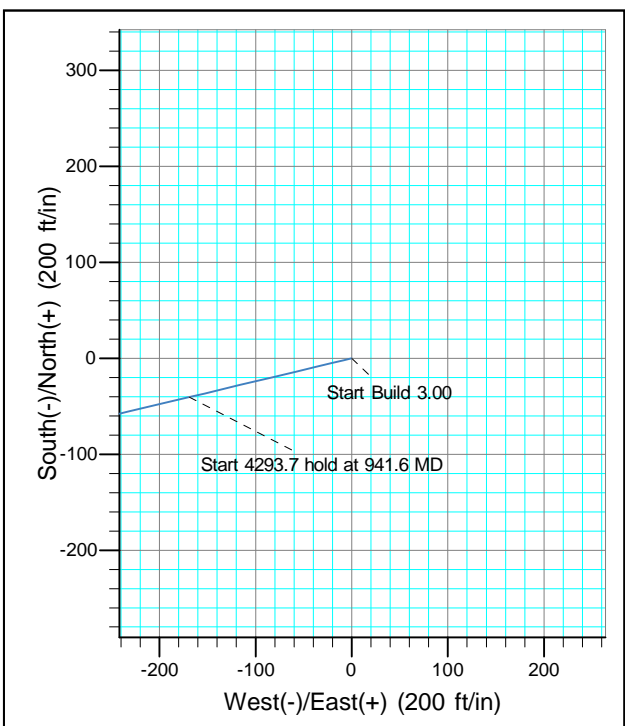


ANNOTATIONS									
TVD	MD	Inc	Azi	+N/-S	+E/-W	Vsect	Departure	Annotation	
120.0	120.0	0.00	0.00	0.0	0.0	0.0	0.0	Start Build 3.00	
916.5	941.6	24.65	256.57	-40.4	-169.3	174.0	174.0	Start 4293.7 hold at 941.6 MD	
4819.0	5235.3	24.65	256.57	-456.2	-1911.0	1964.7	1964.7	Start Drop -1.50	
6412.0	6878.5	0.00	0.00	-537.0	-2249.5	2312.7	2312.7	Start 2960.0 hold at 6878.5 MD	
9372.0	9838.5	0.00	0.00	-537.0	-2249.5	2312.7	2312.7	TD at 9838.5	

FORMATION TOP DETAILS		
TVDPath	MDPath	Formation
0.0	0.0	GRRV
2579.0	2770.8	U WSCH
4213.0	4568.6	G SAND
4392.0	4765.5	FRUN
5505.0	5962.8	OCKR
6095.0	6561.2	UMVRD
6412.0	6878.5	TOPGAS
8221.0	8687.5	CMEQ
8491.0	8957.5	RLNS
8678.0	9144.5	CZZT
8906.0	9372.5	CRCN
9056.0	9522.5	SEGO

DESIGN TARGET DETAILS									
Name	TVD	+N/-S	+E/-W	Northing	Easting	Latitude	Longitude	Shape	
VP	6412.0	-537.0	-2249.5	1650233.200	2213778.800	39.585534	-108.290025	Point	
- plan hits target center									
BHL	9372.0	-537.0	-2249.5	1650233.200	2213778.800	39.585534	-108.290025	Circle (Radius: 50.0)	
- plan hits target center									

CASING DETAILS		
TVD	MD	Name
2929.0	3155.9	9 5/8"





Terra Energy Partners, LLP

Garfield County, CO (Nad 83)

TR 32-28-597 Pad

TR 512-28-597 - Slot TR 512-28-597

OWB

Plan: Plan

Standard Planning Report

13 June, 2023



Database:	NN	Local Co-ordinate Reference:	Well TR 512-28-597 - Slot TR 512-28-597
Company:	Terra Energy Partners, LLP	TVD Reference:	RKB @ 30' @ 8513.0ft
Project:	Garfield County, CO (Nad 83)	MD Reference:	RKB @ 30' @ 8513.0ft
Site:	TR 32-28-597 Pad	North Reference:	True
Well:	TR 512-28-597	Survey Calculation Method:	Minimum Curvature
Wellbore:	OWB		
Design:	Plan		

Project	Garfield County, CO (Nad 83)		
Map System:	US State Plane 1983	System Datum:	Mean Sea Level
Geo Datum:	North American Datum 1983		
Map Zone:	Colorado Central Zone		

Site	TR 32-28-597 Pad, Sec 28, T5S, R97W			
Site Position:		Northing:	1,650,709.300 usft	Latitude: 39.587032
From:	Map	Easting:	2,216,053.200 usft	Longitude: -108.282011
Position Uncertainty:	0.0 ft	Slot Radius:	13-3/16 "	Grid Convergence: -1.75 °

Well	TR 512-28-597 - Slot TR 512-28-597					
Well Position	+N/-S	-8.5 ft	Northing:	1,650,701.100 usft	Latitude:	39.587009
	+E/-W	-9.2 ft	Easting:	2,216,043.700 usft	Longitude:	-108.282044
Position Uncertainty		0.0 ft	Wellhead Elevation:	8,513.0 ft	Ground Level:	8,483.0 ft

Wellbore	OWB				
Magnetics	Model Name	Sample Date	Declination (°)	Dip Angle (°)	Field Strength (nT)
	HDGM	6/5/2023	9.23	65.58	51,012

Design	Plan			
Audit Notes:				
Version:	Phase:	PROTOTYPE	Tie On Depth:	0.0
Vertical Section:	Depth From (TVD)	+N/-S	+E/-W	Direction
	(ft)	(ft)	(ft)	(°)
	0.0	0.0	0.0	256.57

Plan Sections										
Measured Depth (ft)	Inclination (°)	Azimuth (°)	Vertical Depth (ft)	+N/-S (ft)	+E/-W (ft)	Dogleg Rate (°/100usft)	Build Rate (°/100usft)	Turn Rate (°/100usft)	TFO (°)	Target
0.0	0.00	0.00	0.0	0.0	0.0	0.00	0.00	0.00	0.00	
120.0	0.00	0.00	120.0	0.0	0.0	0.00	0.00	0.00	0.00	
941.6	24.65	256.57	916.5	-40.4	-169.3	3.00	3.00	0.00	256.57	
5,235.3	24.65	256.57	4,819.0	-456.2	-1,911.0	0.00	0.00	0.00	0.00	
6,878.5	0.00	0.00	6,412.0	-537.0	-2,249.5	1.50	-1.50	0.00	180.00	
9,838.5	0.00	0.00	9,372.0	-537.0	-2,249.5	0.00	0.00	0.00	0.00	TR 512-28-597 BHL

Database:	NN	Local Co-ordinate Reference:	Well TR 512-28-597 - Slot TR 512-28-597
Company:	Terra Energy Partners, LLP	TVD Reference:	RKB @ 30' @ 8513.0ft
Project:	Garfield County, CO (Nad 83)	MD Reference:	RKB @ 30' @ 8513.0ft
Site:	TR 32-28-597 Pad	North Reference:	True
Well:	TR 512-28-597	Survey Calculation Method:	Minimum Curvature
Wellbore:	OWB		
Design:	Plan		

Planned Survey									
Measured Depth (ft)	Inclination (°)	Azimuth (°)	Vertical Depth (ft)	+N/-S (ft)	+E/-W (ft)	Vertical Section (ft)	Dogleg Rate (°/100usft)	Build Rate (°/100usft)	Turn Rate (°/100usft)
0.0	0.00	0.00	0.0	0.0	0.0	0.0	0.00	0.00	0.00
100.0	0.00	0.00	100.0	0.0	0.0	0.0	0.00	0.00	0.00
120.0	0.00	0.00	120.0	0.0	0.0	0.0	0.00	0.00	0.00
Start Build 3.00									
200.0	2.40	256.57	200.0	-0.4	-1.6	1.7	3.00	3.00	0.00
300.0	5.40	256.57	299.7	-2.0	-8.2	8.5	3.00	3.00	0.00
400.0	8.40	256.57	399.0	-4.8	-19.9	20.5	3.00	3.00	0.00
500.0	11.40	256.57	497.5	-8.7	-36.6	37.7	3.00	3.00	0.00
600.0	14.40	256.57	595.0	-13.9	-58.4	60.0	3.00	3.00	0.00
700.0	17.40	256.57	691.1	-20.3	-85.0	87.4	3.00	3.00	0.00
800.0	20.40	256.57	785.7	-27.8	-116.5	119.8	3.00	3.00	0.00
900.0	23.40	256.57	878.5	-36.5	-152.8	157.1	3.00	3.00	0.00
941.6	24.65	256.57	916.5	-40.4	-169.3	174.0	3.00	3.00	0.00
Start 4293.7 hold at 941.6 MD									
1,000.0	24.65	256.57	969.6	-46.1	-192.9	198.4	0.00	0.00	0.00
1,100.0	24.65	256.57	1,060.5	-55.7	-233.5	240.1	0.00	0.00	0.00
1,200.0	24.65	256.57	1,151.3	-65.4	-274.1	281.8	0.00	0.00	0.00
1,300.0	24.65	256.57	1,242.2	-75.1	-314.6	323.5	0.00	0.00	0.00
1,400.0	24.65	256.57	1,333.1	-84.8	-355.2	365.2	0.00	0.00	0.00
1,500.0	24.65	256.57	1,424.0	-94.5	-395.8	406.9	0.00	0.00	0.00
1,600.0	24.65	256.57	1,514.9	-104.2	-436.3	448.6	0.00	0.00	0.00
1,700.0	24.65	256.57	1,605.8	-113.9	-476.9	490.3	0.00	0.00	0.00
1,800.0	24.65	256.57	1,696.7	-123.5	-517.5	532.0	0.00	0.00	0.00
1,900.0	24.65	256.57	1,787.6	-133.2	-558.0	573.7	0.00	0.00	0.00
2,000.0	24.65	256.57	1,878.5	-142.9	-598.6	615.4	0.00	0.00	0.00
2,100.0	24.65	256.57	1,969.3	-152.6	-639.2	657.1	0.00	0.00	0.00
2,200.0	24.65	256.57	2,060.2	-162.3	-679.7	698.8	0.00	0.00	0.00
2,300.0	24.65	256.57	2,151.1	-172.0	-720.3	740.5	0.00	0.00	0.00
2,400.0	24.65	256.57	2,242.0	-181.6	-760.9	782.2	0.00	0.00	0.00
2,500.0	24.65	256.57	2,332.9	-191.3	-801.4	823.9	0.00	0.00	0.00
2,600.0	24.65	256.57	2,423.8	-201.0	-842.0	865.6	0.00	0.00	0.00
2,700.0	24.65	256.57	2,514.7	-210.7	-882.5	907.3	0.00	0.00	0.00
2,800.0	24.65	256.57	2,605.6	-220.4	-923.1	949.1	0.00	0.00	0.00
2,900.0	24.65	256.57	2,696.5	-230.1	-963.7	990.8	0.00	0.00	0.00
3,000.0	24.65	256.57	2,787.3	-239.7	-1,004.2	1,032.5	0.00	0.00	0.00
3,100.0	24.65	256.57	2,878.2	-249.4	-1,044.8	1,074.2	0.00	0.00	0.00
3,200.0	24.65	256.57	2,969.1	-259.1	-1,085.4	1,115.9	0.00	0.00	0.00
3,300.0	24.65	256.57	3,060.0	-268.8	-1,125.9	1,157.6	0.00	0.00	0.00
3,400.0	24.65	256.57	3,150.9	-278.5	-1,166.5	1,199.3	0.00	0.00	0.00
3,500.0	24.65	256.57	3,241.8	-288.2	-1,207.1	1,241.0	0.00	0.00	0.00
3,600.0	24.65	256.57	3,332.7	-297.8	-1,247.6	1,282.7	0.00	0.00	0.00
3,700.0	24.65	256.57	3,423.6	-307.5	-1,288.2	1,324.4	0.00	0.00	0.00
3,800.0	24.65	256.57	3,514.4	-317.2	-1,328.8	1,366.1	0.00	0.00	0.00
3,900.0	24.65	256.57	3,605.3	-326.9	-1,369.3	1,407.8	0.00	0.00	0.00
4,000.0	24.65	256.57	3,696.2	-336.6	-1,409.9	1,449.5	0.00	0.00	0.00
4,100.0	24.65	256.57	3,787.1	-346.3	-1,450.5	1,491.2	0.00	0.00	0.00
4,200.0	24.65	256.57	3,878.0	-356.0	-1,491.0	1,532.9	0.00	0.00	0.00
4,300.0	24.65	256.57	3,968.9	-365.6	-1,531.6	1,574.6	0.00	0.00	0.00
4,400.0	24.65	256.57	4,059.8	-375.3	-1,572.1	1,616.3	0.00	0.00	0.00
4,500.0	24.65	256.57	4,150.7	-385.0	-1,612.7	1,658.0	0.00	0.00	0.00
4,600.0	24.65	256.57	4,241.6	-394.7	-1,653.3	1,699.7	0.00	0.00	0.00
4,700.0	24.65	256.57	4,332.4	-404.4	-1,693.8	1,741.4	0.00	0.00	0.00
4,800.0	24.65	256.57	4,423.3	-414.1	-1,734.4	1,783.1	0.00	0.00	0.00
4,900.0	24.65	256.57	4,514.2	-423.7	-1,775.0	1,824.9	0.00	0.00	0.00

Database:	NN	Local Co-ordinate Reference:	Well TR 512-28-597 - Slot TR 512-28-597
Company:	Terra Energy Partners, LLP	TVD Reference:	RKB @ 30' @ 8513.0ft
Project:	Garfield County, CO (Nad 83)	MD Reference:	RKB @ 30' @ 8513.0ft
Site:	TR 32-28-597 Pad	North Reference:	True
Well:	TR 512-28-597	Survey Calculation Method:	Minimum Curvature
Wellbore:	OWB		
Design:	Plan		

Planned Survey									
Measured Depth (ft)	Inclination (°)	Azimuth (°)	Vertical Depth (ft)	+N/-S (ft)	+E/-W (ft)	Vertical Section (ft)	Dogleg Rate (°/100usft)	Build Rate (°/100usft)	Turn Rate (°/100usft)
5,000.0	24.65	256.57	4,605.1	-433.4	-1,815.5	1,866.6	0.00	0.00	0.00
5,100.0	24.65	256.57	4,696.0	-443.1	-1,856.1	1,908.3	0.00	0.00	0.00
5,200.0	24.65	256.57	4,786.9	-452.8	-1,896.7	1,950.0	0.00	0.00	0.00
5,235.3	24.65	256.57	4,819.0	-456.2	-1,911.0	1,964.7	0.00	0.00	0.00
Start Drop -1.50									
5,300.0	23.68	256.57	4,878.0	-462.4	-1,936.7	1,991.2	1.50	-1.50	0.00
5,400.0	22.18	256.57	4,970.1	-471.4	-1,974.6	2,030.1	1.50	-1.50	0.00
5,500.0	20.68	256.57	5,063.2	-479.9	-2,010.2	2,066.7	1.50	-1.50	0.00
5,600.0	19.18	256.57	5,157.2	-487.8	-2,043.3	2,100.7	1.50	-1.50	0.00
5,700.0	17.68	256.57	5,252.1	-495.1	-2,074.1	2,132.4	1.50	-1.50	0.00
5,800.0	16.18	256.57	5,347.7	-501.9	-2,102.4	2,161.5	1.50	-1.50	0.00
5,900.0	14.68	256.57	5,444.1	-508.1	-2,128.3	2,188.1	1.50	-1.50	0.00
6,000.0	13.18	256.57	5,541.2	-513.7	-2,151.7	2,212.1	1.50	-1.50	0.00
6,100.0	11.68	256.57	5,638.8	-518.7	-2,172.6	2,233.7	1.50	-1.50	0.00
6,200.0	10.18	256.57	5,737.0	-523.1	-2,191.0	2,252.6	1.50	-1.50	0.00
6,300.0	8.68	256.57	5,835.7	-526.9	-2,207.0	2,269.0	1.50	-1.50	0.00
6,400.0	7.18	256.57	5,934.7	-530.1	-2,220.4	2,282.8	1.50	-1.50	0.00
6,500.0	5.68	256.57	6,034.1	-532.7	-2,231.3	2,294.0	1.50	-1.50	0.00
6,600.0	4.18	256.57	6,133.7	-534.7	-2,239.6	2,302.6	1.50	-1.50	0.00
6,700.0	2.68	256.57	6,233.5	-536.1	-2,245.5	2,308.6	1.50	-1.50	0.00
6,800.0	1.18	256.57	6,333.5	-536.8	-2,248.7	2,311.9	1.50	-1.50	0.00
6,878.5	0.00	0.00	6,412.0	-537.0	-2,249.5	2,312.7	1.50	-1.50	0.00
Start 2960.0 hold at 6878.5 MD									
6,900.0	0.00	0.00	6,433.5	-537.0	-2,249.5	2,312.7	0.00	0.00	0.00
7,000.0	0.00	0.00	6,533.5	-537.0	-2,249.5	2,312.7	0.00	0.00	0.00
7,100.0	0.00	0.00	6,633.5	-537.0	-2,249.5	2,312.7	0.00	0.00	0.00
7,200.0	0.00	0.00	6,733.5	-537.0	-2,249.5	2,312.7	0.00	0.00	0.00
7,300.0	0.00	0.00	6,833.5	-537.0	-2,249.5	2,312.7	0.00	0.00	0.00
7,400.0	0.00	0.00	6,933.5	-537.0	-2,249.5	2,312.7	0.00	0.00	0.00
7,500.0	0.00	0.00	7,033.5	-537.0	-2,249.5	2,312.7	0.00	0.00	0.00
7,600.0	0.00	0.00	7,133.5	-537.0	-2,249.5	2,312.7	0.00	0.00	0.00
7,700.0	0.00	0.00	7,233.5	-537.0	-2,249.5	2,312.7	0.00	0.00	0.00
7,800.0	0.00	0.00	7,333.5	-537.0	-2,249.5	2,312.7	0.00	0.00	0.00
7,900.0	0.00	0.00	7,433.5	-537.0	-2,249.5	2,312.7	0.00	0.00	0.00
8,000.0	0.00	0.00	7,533.5	-537.0	-2,249.5	2,312.7	0.00	0.00	0.00
8,100.0	0.00	0.00	7,633.5	-537.0	-2,249.5	2,312.7	0.00	0.00	0.00
8,200.0	0.00	0.00	7,733.5	-537.0	-2,249.5	2,312.7	0.00	0.00	0.00
8,300.0	0.00	0.00	7,833.5	-537.0	-2,249.5	2,312.7	0.00	0.00	0.00
8,400.0	0.00	0.00	7,933.5	-537.0	-2,249.5	2,312.7	0.00	0.00	0.00
8,500.0	0.00	0.00	8,033.5	-537.0	-2,249.5	2,312.7	0.00	0.00	0.00
8,600.0	0.00	0.00	8,133.5	-537.0	-2,249.5	2,312.7	0.00	0.00	0.00
8,700.0	0.00	0.00	8,233.5	-537.0	-2,249.5	2,312.7	0.00	0.00	0.00
8,800.0	0.00	0.00	8,333.5	-537.0	-2,249.5	2,312.7	0.00	0.00	0.00
8,900.0	0.00	0.00	8,433.5	-537.0	-2,249.5	2,312.7	0.00	0.00	0.00
9,000.0	0.00	0.00	8,533.5	-537.0	-2,249.5	2,312.7	0.00	0.00	0.00
9,100.0	0.00	0.00	8,633.5	-537.0	-2,249.5	2,312.7	0.00	0.00	0.00
9,200.0	0.00	0.00	8,733.5	-537.0	-2,249.5	2,312.7	0.00	0.00	0.00
9,300.0	0.00	0.00	8,833.5	-537.0	-2,249.5	2,312.7	0.00	0.00	0.00
9,400.0	0.00	0.00	8,933.5	-537.0	-2,249.5	2,312.7	0.00	0.00	0.00
9,500.0	0.00	0.00	9,033.5	-537.0	-2,249.5	2,312.7	0.00	0.00	0.00
9,600.0	0.00	0.00	9,133.5	-537.0	-2,249.5	2,312.7	0.00	0.00	0.00
9,700.0	0.00	0.00	9,233.5	-537.0	-2,249.5	2,312.7	0.00	0.00	0.00
9,800.0	0.00	0.00	9,333.5	-537.0	-2,249.5	2,312.7	0.00	0.00	0.00
9,838.5	0.00	0.00	9,372.0	-537.0	-2,249.5	2,312.7	0.00	0.00	0.00

Database:	NN	Local Co-ordinate Reference:	Well TR 512-28-597 - Slot TR 512-28-597
Company:	Terra Energy Partners, LLP	TVD Reference:	RKB @ 30' @ 8513.0ft
Project:	Garfield County, CO (Nad 83)	MD Reference:	RKB @ 30' @ 8513.0ft
Site:	TR 32-28-597 Pad	North Reference:	True
Well:	TR 512-28-597	Survey Calculation Method:	Minimum Curvature
Wellbore:	OWB		
Design:	Plan		

Planned Survey									
Measured Depth (ft)	Inclination (°)	Azimuth (°)	Vertical Depth (ft)	+N/-S (ft)	+E/-W (ft)	Vertical Section (ft)	Dogleg Rate (°/100usft)	Build Rate (°/100usft)	Turn Rate (°/100usft)
TD at 9838.5									

Design Targets									
Target Name	Dip Angle (°)	Dip Dir. (°)	TVD (ft)	+N/-S (ft)	+E/-W (ft)	Northing (usft)	Easting (usft)	Latitude	Longitude
TR 512-28-597 VP - hit/miss target - Shape	0.00	0.00	6,412.0	-537.0	-2,249.5	1,650,233.200	2,213,778.800	39.585534	-108.290025
TR 512-28-597 BHL - plan hits target center - Circle (radius 50.0)	0.00	0.00	9,372.0	-537.0	-2,249.5	1,650,233.200	2,213,778.800	39.585534	-108.290025

Casing Points					
Measured Depth (ft)	Vertical Depth (ft)	Name	Casing Diameter (")	Hole Diameter (")	
3,155.9	2,929.0	9 5/8"	9-5/8	12-1/4	

Formations					
Measured Depth (ft)	Vertical Depth (ft)	Name	Lithology	Dip (°)	Dip Direction (°)
0.0	0.0	GRRV		0.00	
2,770.8	2,579.0	U WSCH		0.00	
4,568.6	4,213.0	G SAND		0.00	
4,765.5	4,392.0	FRUN		0.00	
5,962.8	5,505.0	OCRK		0.00	
6,561.2	6,095.0	UMVRD		0.00	
6,878.5	6,412.0	TOPGAS		0.00	
8,687.5	8,221.0	CME0		0.00	
8,957.5	8,491.0	RLNS		0.00	
9,144.5	8,678.0	CZZT		0.00	
9,372.5	8,906.0	CRCN		0.00	
9,522.5	9,056.0	SEGO		0.00	

Plan Annotations				
Measured Depth (ft)	Vertical Depth (ft)	+N/-S (ft)	+E/-W (ft)	Comment
120.0	120.0	0.0	0.0	Start Build 3.00
941.6	916.5	-40.4	-169.3	Start 4293.7 hold at 941.6 MD
5,235.3	4,819.0	-456.2	-1,911.0	Start Drop -1.50
6,878.5	6,412.0	-537.0	-2,249.5	Start 2960.0 hold at 6878.5 MD
9,838.5	9,372.0	-537.0	-2,249.5	TD at 9838.5