

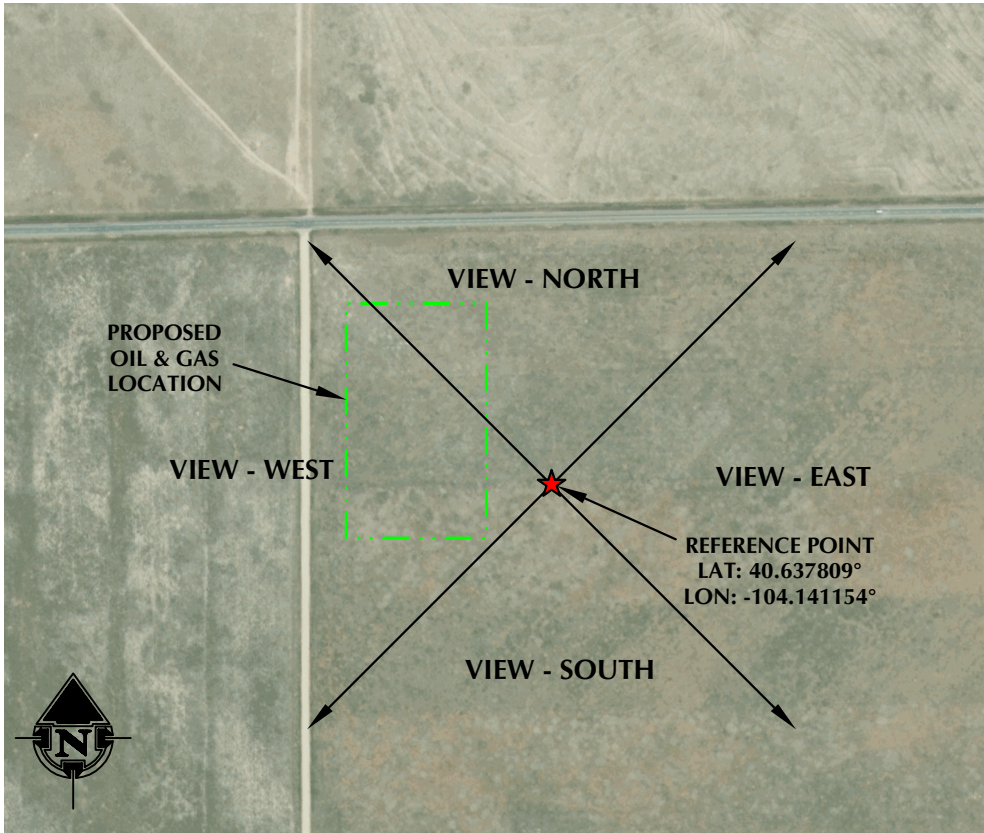
REFERENCE AREA PICTURES
HILL 2527
NW1/4 NW1/4 SECTION 30, TOWNSHIP 8 NORTH, RANGE 60 WEST, 6TH P.M., WELD COUNTY, COLORADO



VIEW - NORTH



VIEW - SOUTH



VIEW - OVERHEAD
AERIAL IMAGERY COURTESY OF ESRI, INC.



VIEW - EAST



VIEW - WEST



LOVELAND OFFICE
6706 North Franklin Avenue
Loveland, Colorado 80538
Phone 970-776-4331

SHERIDAN OFFICE
1095 Saberton Avenue
Sheridan, Wyoming 82801
Phone 307-674-0609

CONSULTING, LLC



1125 17th Street, Suite 550
Denver, Colorado 80202

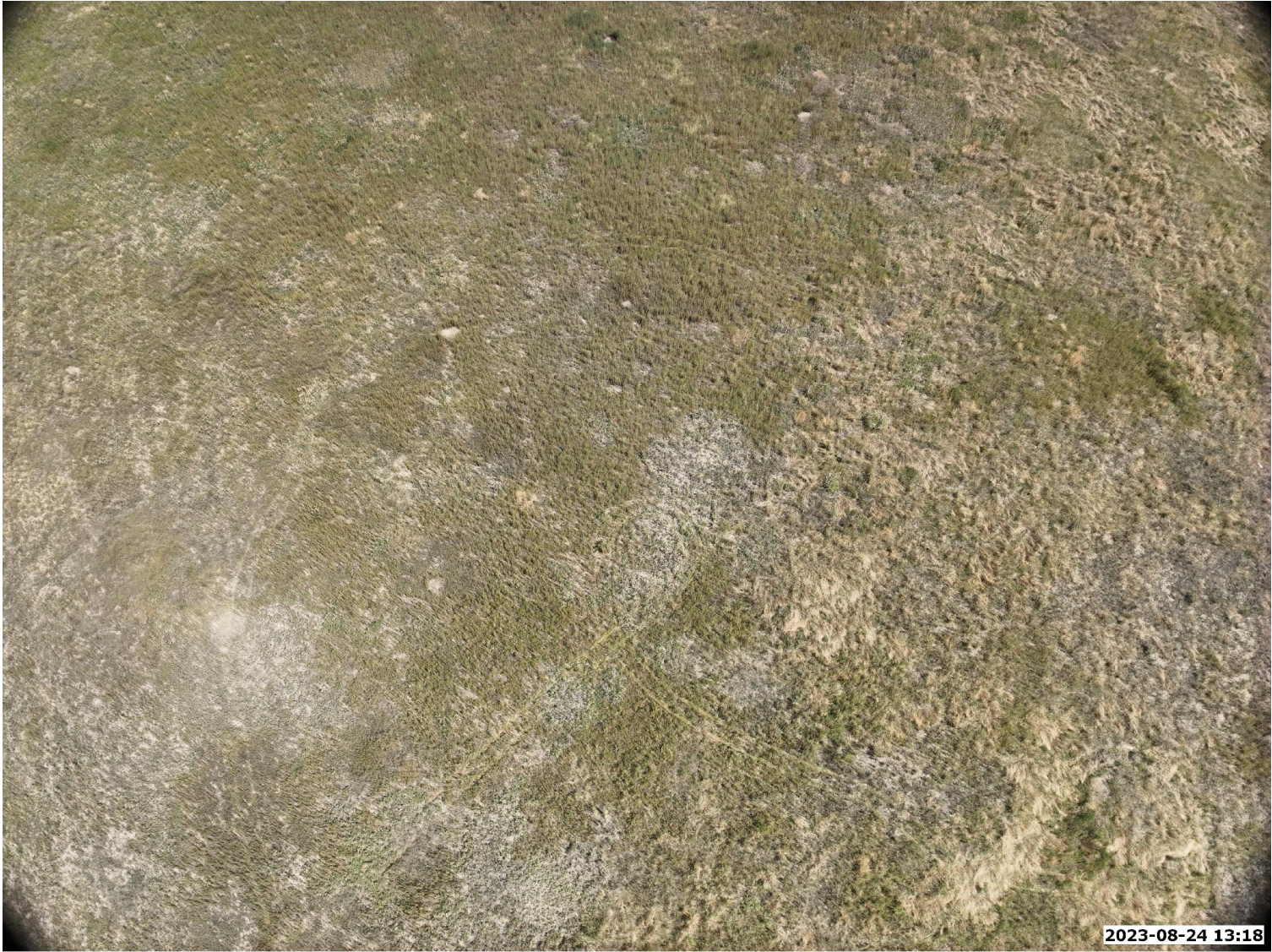
DATE SURVEYED: 6/12/23
DATE: 8/3/23
DRAFTER: SRS
REVISED: 8/25/23

DATA SOURCES:
-AERIAL IMAGERY COURTESY OF ESRI, INC.

REFERENCE AREA PICTURES

HILL 2527

NW1/4 NW1/4 SECTION 30, TOWNSHIP 8 NORTH, RANGE 60 WEST, 6TH P.M., WELD COUNTY, COLORADO



VIEW - OVERHEAD (DRONE)



VIEW - CLOSE UP



LOVELAND OFFICE
6706 North Franklin Avenue
Loveland, Colorado 80538
Phone 970-776-4331

SHERIDAN OFFICE
1095 Saberton Avenue
Sheridan, Wyoming 82801
Phone 307-674-0609



DATE SURVEYED: 6/12/23
DATE: 8/3/23
DRAFTER: SRS
REVISED: 8/25/23