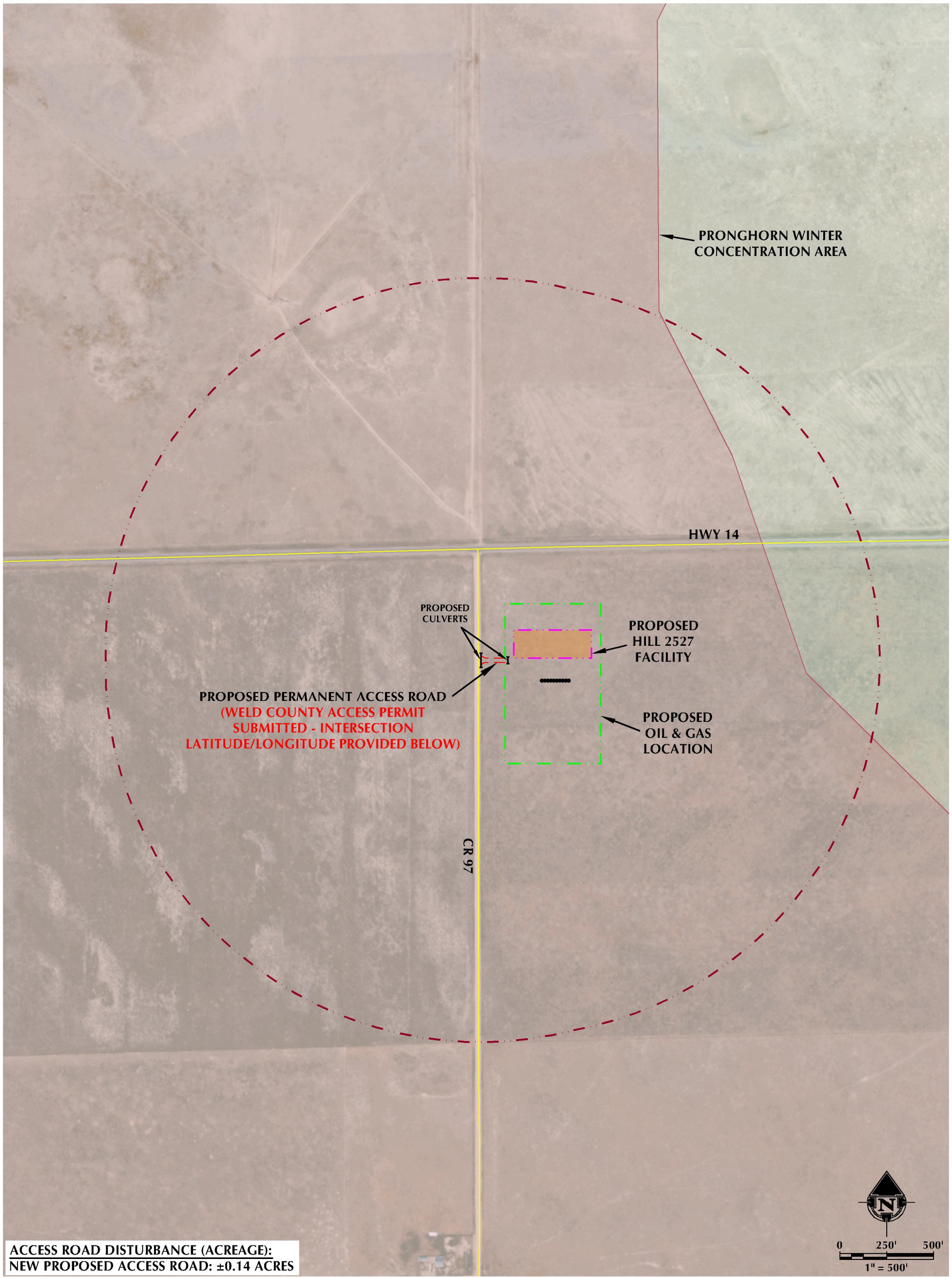


ACCESS MAP
HILL 2527

NW1/4 NW1/4 SECTION 30, TOWNSHIP 8 NORTH, RANGE 60 WEST, 6TH P.M. WELD COUNTY, COLORADO



ACCESS ROAD DISTURBANCE (ACREAGE):
NEW PROPOSED ACCESS ROAD: ±0.14 ACRES

LEGEND		
●	PROPOSED WELL	- - - 2000' ACCESS BUFFER
- - -	PROPOSED PERMANENT ACCESS ROAD	■ RESIDENTIAL BUILDING UNIT
—	PUBLIC ROAD	■ NON-RESIDENTIAL BUILDING UNIT
- · - · -	PROPOSED OIL & GAS LOCATION	■ PROPOSED FACILITY
		■ PRONGHORN WINTER CONCENTRATION AREA

INTERSECTION OF
ACCESS ROAD AND CR 97
LATITUDE: 40.638835°
LONGITUDE: -104.144309°



609 CONSULTING, LLC
LOVELAND OFFICE
6706 South Franklin Avenue
Loveland, Colorado 80538
Phone: 970-776-1331
SHERIDAN OFFICE
1095 Saberton Avenue
Sheridan, Wyoming 82801
Phone: 307-674-0609

DATE SURVEYED: 6/12/23
DATE: 8/3/23
DRAFTER: JAC
REVISED: 8/29/23

DATA SOURCES & NOTES:
- AERIAL COURTESY OF ESRI, INC.

PREPARED FOR:
Verdad Resources