

WELL PAD LOCATION PICTURES  
HILL 2527

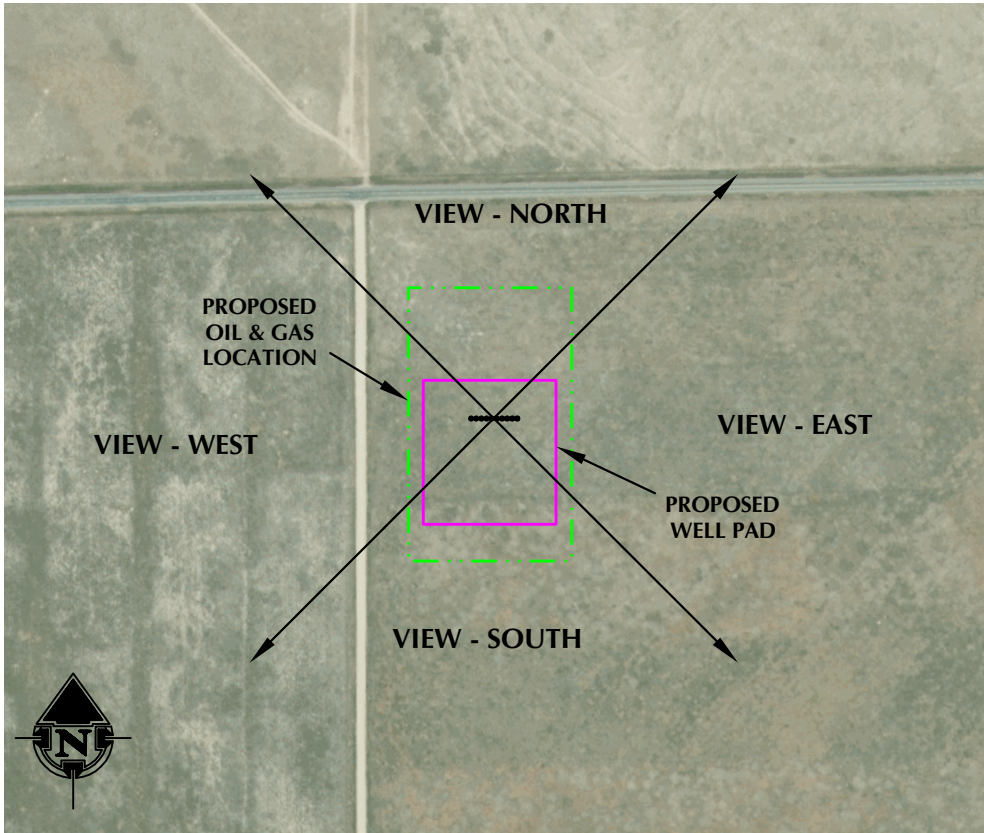
NW1/4 NW1/4 SECTION 30, TOWNSHIP 8 NORTH, RANGE 60 WEST, 6TH P.M., WELD COUNTY, COLORADO



LOCATION PICTURE OF HILL 2527 WELL PAD - CAMERA VIEW NORTH



LOCATION PICTURE OF HILL 2527 WELL PAD - CAMERA VIEW SOUTH



VIEW - OVERHEAD  
AERIAL IMAGERY COURTESY OF ESRI, INC.



LOCATION PICTURE OF HILL 2527 WELL PAD - CAMERA VIEW EAST



LOCATION PICTURE OF HILL 2527 WELL PAD - CAMERA VIEW WEST

K:\VERDAD\2022\_199\_HILL\_2527\T8N\_R60W\_SEC\_30DWGHILL\_2527\_T8N\_R60W\_SEC\_30.dwg, 8/3/2023 11:05:09 PM, ssundberg



LOVELAND OFFICE  
6706 North Franklin Avenue  
Loveland, Colorado 80538  
Phone 970-776-4331  
  
SHERIDAN OFFICE  
1095 Saberton Avenue  
Sheridan, Wyoming 82801  
Phone 307-674-0609

CONSULTING, LLC



1125 17th Street, Suite 550  
Denver, Colorado 80202

DATE SURVEYED: 6/12/23  
DATE: 8/3/23  
DRAFTER: SRS  
REVISED:

DATA SOURCES:  
-AERIAL IMAGERY COURTESY OF ESRI, INC.