

Wellhead Closure Checklist

COGCC Rule 911.a.(4) Environmental Site Closure Assessment Field Form

Additional attachments (optional):		Pit Closure <input checked="" type="checkbox"/>		Tank Battery Closure		Flowline Closure		Partially Buried Vault Closure	
Site Name & COGCC Facility Number: Shable USX AB #11-14P		Date: 11/07/23					Remediation Project #: 30816		
Associated Wells: 05-123-31314		Age of Site: Years					Number of Photos Attached: 6		
Location: (GPS coordinates of wellhead or southeastern most wellhead for multiple) 40.582301 / -104.518975							Estimated Facility Size (acres): N/A		
General Condition of Site: (General observations regarding housekeeping, corrosion, waste management, etc.) Good Condition									
USCS Soil Type: CL				Estimated Depth to Groundwater: ~30-50'					
Hydrocarbon Impacted Soils / Spills: (Note estimated size and if impact appears to be surficial or extends to an unknown depth) Slight petroleum hydrocarbon odor observed on base of excavation; no staining observed									
Salt Crusted Soils or Impacted Vegetation: (Note estimated size and if impact appears to be surficial or extends to an unknown depth) None observed.									
Wellhead(s)									
Well API	05-123-31314								
Age	Years								
Condition of surface around wellhead	Good - No Odor/Staining								
PID Readings	WH-N: 0.5	WH-E: 0.9	WH-S: 1.0	WH-W: 0.8					
Condition of subsurface (staining present)	Slight petroleum hydrocarbon odor observed on base of excavation; no staining observed								
PID Readings	67.4	1.2	58.9	8.7	383.2				
Sample taken? Location/Sample ID#	WH-SS-01	WH-SS-02	WH-SS-03	WH-SS-04	WH-FS-01				
Photo Number(s)	See photolog								
Other observations regarding wellheads: Well casing cut/capped following assessment.									
Summary									
Was impacted soil identified? No <input type="checkbox"/> Yes - less than 10 cubic yards <input checked="" type="checkbox"/> Yes - more than 10 cubic yards <input type="checkbox"/>									
Total number of samples field screened: 9				Total number of samples collected: 9					
Highest PID Reading: 383.2				Total number of samples submitted to lab for analysis: 5					
If more than 10 cubic yards of impacted soil were observed:									
Vertical extent:				Estimated spill volume:					
N/A									
Lateral extent:				Volume of soil removed:					
Is additional investigation required?									
Was groundwater encountered during the investigation? <input checked="" type="checkbox"/> No <input type="checkbox"/> Yes - not impacted or in contact with impacted soils <input type="checkbox"/> Yes - groundwater impacted and/or in contact with impacted soils									
Measured depth to groundwater:				Was remedial groundwater removal conducted? Yes <input type="checkbox"/> No <input type="checkbox"/>					
Date Groundwater was encountered:				Commencement date of removal:					
Sheen on groundwater? Yes <input type="checkbox"/> No <input type="checkbox"/>				Volume of groundwater removed prior to sampling:					
Free product observed? Yes <input type="checkbox"/> No <input type="checkbox"/>				N/A					
Volume of groundwater removed post sampling:									
Total number of samples collected:				Total Volume of groundwater removed:					
Total number of samples submitted to lab for analysis:									



FIGURES

Figure 1: Topographic Site Location Map

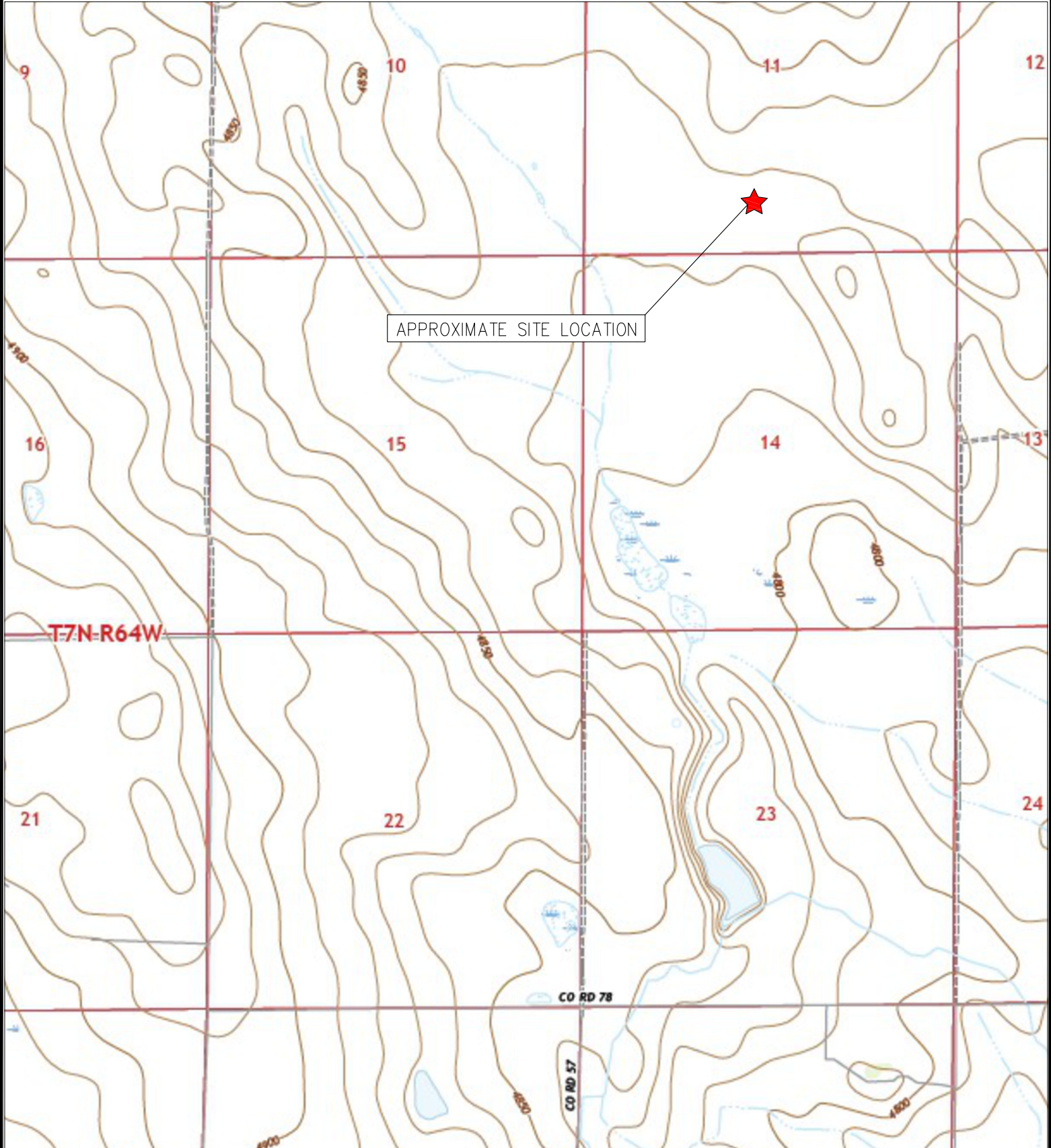
Figure 2: Aerial Site Location Map

Figure 3: Sample Location Map

Figure 4: Soil Analytical Map

Figure 5: Polycyclic Aromatic Hydrocarbons Map

Figure 6: Metals in Soil Map



APPROXIMATE SITE LOCATION

T7N-R64W

CO RD 78

CO RD 57



TOPOGRAPHIC SITE LOCATION MAP
 SHABLE USX AB #11-14P
 CLOSURE ASSESSMENT
 40.582301 / -104.518975
 SE¼ SW¼ SEC.11 T7N R64W 6PM
 WELD COUNTY, COLORADO
 API # 05-123-31314
 REMEDIATION # 30816



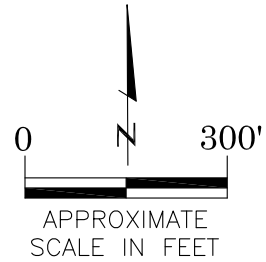
EAGLE
 ENVIRONMENTAL
 CONSULTING, LLC

8000 W 44th Ave, Wheat Ridge, CO 80033
 Ph: 303-433-0479 • F: 303-325-5449



LEGEND

- FORMER SHABLE USX AB #11-14P WELLHEAD (PLUGGED AND ABANDONED)
- ASSOCIATED SEPARATOR
- APPROXIMATE FLOWLINE LOCATION



AERIAL SITE LOCATION MAP
 SHABLE USX AB #11-14P
 CLOSURE ASSESSMENT
 40.582301 / -104.518975
 SE¼ SW¼ SEC.11 T7N R64W 6PM
 WELD COUNTY, COLORADO
 API # 05-123-31314
 REMEDIATION # 30816

FIGURE NO.
2

DRAWN BY:
EL



EAGLE
 ENVIRONMENTAL
 CONSULTING, LLC
 8000 W 44th Ave, Wheat Ridge, CO 80033
 Ph: 303-433-0479 • F: 303-325-5449

LEGEND

- - - WELLHEAD ASSESSMENT BOUNDARIES
- SS-02 APPROXIMATE LOCATION OF SOIL SAMPLES SUBMITTED FOR LABORATORY ANALYSIS
- APPROXIMATE LOCATION OF SOIL SAMPLES FIELD SCREENED, ONLY, WITH PHOTOIONIZATION DETECTOR



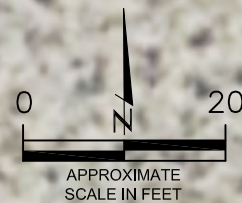
SAMPLE LOCATION MAP
SHABLE USX AB #11-14P
CLOSURE ASSESSMENT
40.582301 / -104.518975
SE¼ SW¼ SEC.11 T7N R64W 6PM
WELD COUNTY, COLORADO
API # 05-123-31314
REMEDIAION # 30816

FIGURE NO.
3

DRAWN BY:
EL



EAGLE
ENVIRONMENTAL
CONSULTING, LLC
8000 W 44th Ave, Wheat Ridge, CO 80033
Ph: 303-433-0479 • F: 303-325-5449



LEGEND

- WELLHEAD ASSESSMENT BOUNDARIES
- APPROXIMATE LOCATION OF SOIL SAMPLES SUBMITTED FOR LABORATORY ANALYSIS

PARAMETERS

SAMPLE LOCATION
 DATE
 DEPTH (FEET)
 B = BENZENE (mg/kg)
 T = TOLUENE (mg/kg)
 E = ETHYLBENZENE (mg/kg)
 X = TOTAL XYLENES (mg/kg)
 N = NAPHTHALENE (mg/kg)
 G = TPH-GRO (mg/kg)
 D = TPH-DRO (mg/kg)
 R = TPH-RRO (mg/kg)
 1,2,4-TMB = 1,2,4 TRIMETHYLBENZENE (mg/kg)
 1,3,5-TMB = 1,3,5 TRIMETHYLBENZENE (mg/kg)
 Brn= BORON (mg/L)
 EC = SPECIFIC CONDUCTANCE (mmhos/cm)
 SAR= SODIUM ADSORPTION RATIO
 pH = pH (PH UNITS)

mg/kg = MILLIGRAMS PER KILOGRAM
 mg/L = MILLIGRAMS PER LITER
 mmhos/cm = MILLIMHOS PER CENTIMETER

TPH-GRO = TOTAL PETROLEUM HYDROCARBONS - GASOLINE RANGE ORGANICS
 TPH-DRO = TOTAL PETROLEUM HYDROCARBONS - DIESEL RANGE ORGANICS
 TPH-RRO = TOTAL PETROLEUM HYDROCARBONS - RESIDUAL RANGE ORGANICS

NOTES:
 VALUES PRESENTED WITH A LESS THAN SYMBOL (<) DID NOT CONTAIN CONCENTRATIONS AT OR ABOVE LABORATORY DETECTION LIMITS.

VALUES PRESENTED IN **BOLD** EXCEED ECMC TABLE 915-1 REGULATORY LIMITS.

VALUES PRESENTED WITH ASTERISK (*) EXCEED ECMC TABLE 915-1 PROTECTION OF GROUNDWATER SOIL SCREENING LEVELS, ONLY.

ECMC = ENERGY & CARBON MANAGEMENT COMMISSION

SOIL ANALYTICAL MAP
 SHABLE USX AB #11-14P
 CLOSURE ASSESSMENT
 40.582301 / -104.518975
 SE¼ SW¼ SEC.11 T7N R64W 6PM
 WELD COUNTY, COLORADO
 API # 05-123-31314
 REMEDIATION # 30816

FIGURE NO.
4

DRAWN BY:
EL



EAGLE
 ENVIRONMENTAL
 CONSULTING, LLC
 8000 W 44th Ave, Wheat Ridge, CO 80033
 Ph: 303-433-0479 • F: 303-325-5449

WH-FS-01@8'
 11/07/23
 8'
 B = <0.00200
 T = <0.00200
 E = 0.00494
 X = 0.00302
 N = **0.164***
 G = **76.4**
 D = **1030**
 R = **527**
 1,2,4-TMB = **0.137***
 1,3,5-TMB = **0.292***
 Brn= 1.01
 EC = 3.50
 SAR= 2.72
 pH = 7.98

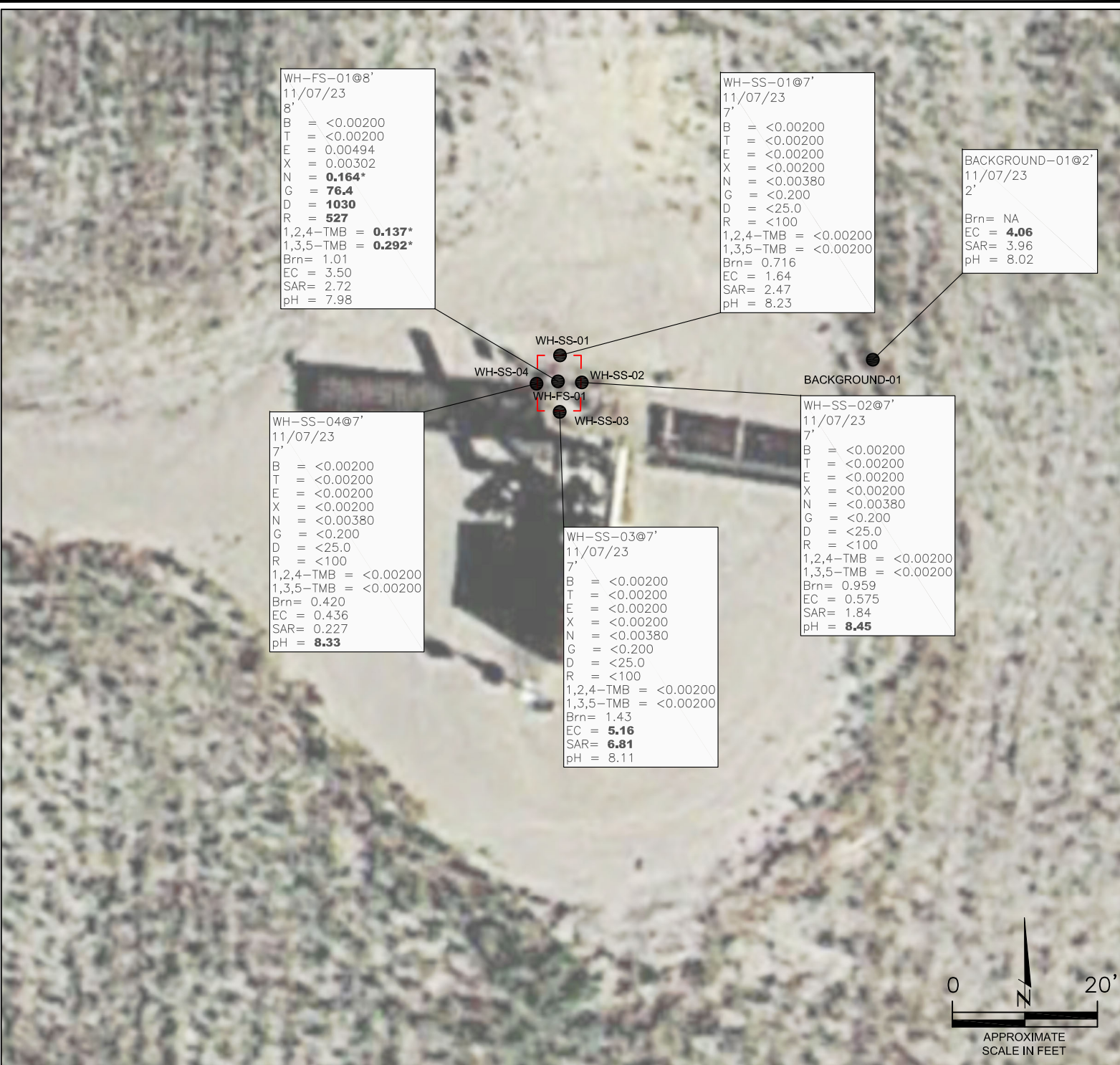
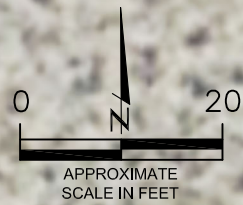
WH-SS-01@7'
 11/07/23
 7'
 B = <0.00200
 T = <0.00200
 E = <0.00200
 X = <0.00200
 N = <0.00380
 G = <0.200
 D = <25.0
 R = <100
 1,2,4-TMB = <0.00200
 1,3,5-TMB = <0.00200
 Brn= 0.716
 EC = 1.64
 SAR= 2.47
 pH = 8.23

BACKGROUND-01@2'
 11/07/23
 2'
 Brn= NA
 EC = **4.06**
 SAR= 3.96
 pH = 8.02

WH-SS-04@7'
 11/07/23
 7'
 B = <0.00200
 T = <0.00200
 E = <0.00200
 X = <0.00200
 N = <0.00380
 G = <0.200
 D = <25.0
 R = <100
 1,2,4-TMB = <0.00200
 1,3,5-TMB = <0.00200
 Brn= 0.420
 EC = 0.436
 SAR= 0.227
 pH = **8.33**

WH-SS-03@7'
 11/07/23
 7'
 B = <0.00200
 T = <0.00200
 E = <0.00200
 X = <0.00200
 N = <0.00380
 G = <0.200
 D = <25.0
 R = <100
 1,2,4-TMB = <0.00200
 1,3,5-TMB = <0.00200
 Brn= 1.43
 EC = **5.16**
 SAR= **6.81**
 pH = 8.11

WH-SS-02@7'
 11/07/23
 7'
 B = <0.00200
 T = <0.00200
 E = <0.00200
 X = <0.00200
 N = <0.00380
 G = <0.200
 D = <25.0
 R = <100
 1,2,4-TMB = <0.00200
 1,3,5-TMB = <0.00200
 Brn= 0.959
 EC = 0.575
 SAR= 1.84
 pH = **8.45**



LEGEND

- WELLHEAD ASSESSMENT BOUNDARIES
- APPROXIMATE LOCATION OF SOIL SAMPLES SUBMITTED FOR LABORATORY ANALYSIS

PARAMETERS

SAMPLE LOCATION
DATE SAMPLE COLLECTED
APPROXIMATE DEPTH
POLYCYCLIC AROMATIC HYDROCARBONS (PAHs) (mg/kg)

mg/kg = MILLIGRAMS PER KILOGRAM

NOTES:
VALUES PRESENTED WITH A LESS THAN SYMBOL (<) DID NOT CONTAIN CONCENTRATIONS AT OR ABOVE LABORATORY DETECTION LIMITS

VALUES PRESENTED IN **BOLD** EXCEED ECMC TABLE 915-1 REGULATORY LIMITS

VALUES PRESENTED WITH AN ASTERISK (*) EXCEED ECMC TABLE 915-1 GROUNDWATER SOIL SCREENING LEVELS, ONLY.

ECMC = ENERGY & CARBON MANAGEMENT COMMISSION

WH-FS-01@8'
11/07/23
8'

1-Methylnaphthalene = **0.819***
2-Methylnaphthalene = **0.385***
Acenaphthene = 0.229
Anthracene = 0.025
Benzo(a)anthracene = **0.019***
Benzo(a)pyrene = <0.020
Benzo(b)fluoranthene = <0.020
Benzo(k)fluoranthene = <0.020
Chrysene = 0.036
Dibenzo(a,h)anthracene = <0.020
Fluoranthene = <0.020
Fluorene = 0.185
Indeno(1,2,3-CD)pyrene = <0.020
Pyrene = 0.022

WH-SS-01@7'
11/07/23
7'

1-Methylnaphthalene = **0.008***
2-Methylnaphthalene = 0.004
Acenaphthene = <0.020
Anthracene = <0.020
Benzo(a)anthracene = <0.005
Benzo(a)pyrene = <0.020
Benzo(b)fluoranthene = <0.020
Benzo(k)fluoranthene = <0.020
Chrysene = <0.020
Dibenzo(a,h)anthracene = <0.020
Fluoranthene = <0.020
Fluorene = <0.020
Indeno(1,2,3-CD)pyrene = <0.020
Pyrene = <0.020

WH-SS-01
WH-SS-04
WH-SS-02
WH-FS-01
WH-SS-03

WH-SS-04@7'
11/07/23
7'

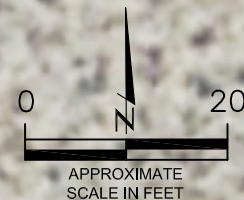
1-Methylnaphthalene = <0.002
2-Methylnaphthalene = <0.002
Acenaphthene = <0.020
Anthracene = <0.020
Benzo(a)anthracene = <0.005
Benzo(a)pyrene = <0.020
Benzo(b)fluoranthene = <0.020
Benzo(k)fluoranthene = <0.020
Chrysene = <0.020
Dibenzo(a,h)anthracene = <0.020
Fluoranthene = <0.020
Fluorene = <0.020
Indeno(1,2,3-CD)pyrene = <0.020
Pyrene = <0.020

WH-SS-03@7'
11/07/23
7'

1-Methylnaphthalene = **0.010***
2-Methylnaphthalene = 0.005
Acenaphthene = <0.020
Anthracene = <0.020
Benzo(a)anthracene = <0.005
Benzo(a)pyrene = <0.020
Benzo(b)fluoranthene = <0.020
Benzo(k)fluoranthene = <0.020
Chrysene = <0.020
Dibenzo(a,h)anthracene = <0.020
Fluoranthene = <0.020
Fluorene = <0.020
Indeno(1,2,3-CD)pyrene = <0.020
Pyrene = <0.020

WH-SS-02@7'
11/07/23
7'

1-Methylnaphthalene = <0.002
2-Methylnaphthalene = <0.002
Acenaphthene = <0.020
Anthracene = <0.020
Benzo(a)anthracene = <0.005
Benzo(a)pyrene = <0.020
Benzo(b)fluoranthene = <0.020
Benzo(k)fluoranthene = <0.020
Chrysene = <0.020
Dibenzo(a,h)anthracene = <0.020
Fluoranthene = <0.020
Fluorene = <0.020
Indeno(1,2,3-CD)pyrene = <0.020
Pyrene = <0.020



POLYCYCLIC AROMATIC HYDROCARBONS MAP
SHABLE USX AB #11-14P
CLOSURE ASSESSMENT
40.582301 / -104.518975
SE¼ SW¼ SEC.11 T7N R64W 6PM
WELD COUNTY, COLORADO
API # 05-123-31314
REMEDATION # 30816

FIGURE NO.
5

DRAWN BY:
EL



EAGLE
ENVIRONMENTAL
CONSULTING, LLC
8000 W 44th Ave, Wheat Ridge, CO 80033
Ph: 303-433-0479 • F: 303-325-5449

LEGEND

- WELLHEAD ASSESSMENT BOUNDARIES
- APPROXIMATE LOCATION OF SOIL SAMPLES SUBMITTED FOR LABORATORY ANALYSIS

PARAMETERS

SAMPLE LOCATION
 DATE SAMPLE COLLECTED
 APPROXIMATE DEPTH
 Arsenic = (mg/kg)
 Barium = (mg/kg)
 Cadmium = (mg/kg)
 Chromium (VI) = (mg/kg)
 Copper = (mg/kg)
 Lead = (mg/kg)
 Nickel = (mg/kg)
 Selenium = (mg/kg)
 Silver = (mg/kg)
 Zinc = (mg/kg)

mg/kg = MILLIGRAMS PER KILOGRAM

NA - NOT ANALYZED

NOTES:
 VALUES PRESENTED WITH A LESS THAN SYMBOL (<) DID NOT CONTAIN CONCENTRATIONS AT OR ABOVE LABORATORY DETECTION LIMITS

ELEVATED METALS ARE NATURALLY OCCURRING IN COLORADO. THE LOCAL CLEAN-UP LEVELS ARE 1.25*BACKGROUND CONCENTRATIONS.

VALUES PRESENTED IN **BOLD** EXCEED EMC TABLE 915-1 REGULATORY LIMITS AND LOCAL CLEAN-UP LEVELS.

*VALUES EXCEED EMC TABLE 915-1 PROTECTION OF GROUNDWATER SOIL SCREENING LEVELS, ONLY.

**ACHIEVABLE PRACTICAL QUANTITATIVE LIMITS FOR HEXAVALENT CHROMIUM (Cr VI) IN SOILS IS IN THE RANGE OF 0.1 TO 1 mg/kg.

EMCM = ENERGY & CARBON MANAGEMENT COMMISSION

WH-FS-01@8'
 11/07/23
 8'

Arsenic = 3.79
 Barium = 79.2
 Cadmium = 0.284
 Chromium (VI) = <0.244**
 Copper = 14.6
 Lead = 11.2
 Nickel = 16.5
 Selenium = 0.137
 Silver = <0.0909
 Zinc = <90.9

WH-SS-01@7'
 11/07/23
 7'

Arsenic = 3.05
 Barium = 204*
 Cadmium = 0.147
 Chromium (VI) = <0.244**
 Copper = 13.1
 Lead = 11.2
 Nickel = 10.0
 Selenium = 0.315*
 Silver = <0.0948
 Zinc = <94.8

BACKGROUND-01@2'
 11/07/23
 2'

Arsenic = 3.91
 Barium = 168*
 Cadmium = 0.427*
 Chromium (VI) = NA
 Copper = NA
 Lead = 13.9
 Nickel = NA
 Selenium = 1.27*
 Silver = NA
 Zinc = NA

WH-SS-04@7'
 11/07/23
 7'

Arsenic = **6.15**
 Barium = **278***
 Cadmium = 0.164
 Chromium (VI) = <0.244**
 Copper = 9.72
 Lead = 8.85
 Nickel = <8.85
 Selenium = 0.315*
 Silver = <0.0885
 Zinc = <88.5

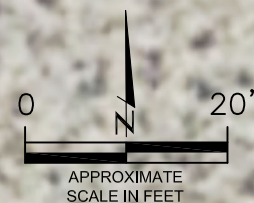
WH-SS-01
 WH-SS-04
 WH-SS-02
 WH-FS-01
 WH-SS-03

WH-SS-02@7'
 11/07/23
 7'

Arsenic = 3.05
 Barium = 163*
 Cadmium = 0.175
 Chromium (VI) = <0.244**
 Copper = 12.9
 Lead = 11.1
 Nickel = 10.4
 Selenium = 0.218
 Silver = <0.0907
 Zinc = <90.7

WH-SS-03@7'
 11/07/23
 7'

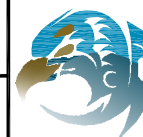
Arsenic = 3.46
 Barium = 73.2
 Cadmium = **0.667***
 Chromium (VI) = <0.244**
 Copper = 21.8
 Lead = 15.6*
 Nickel = 20.9
 Selenium = 0.253
 Silver = <0.0923
 Zinc = <92.3



METALS IN SOIL MAP
 SHABLE USX AB #11-14P
 CLOSURE ASSESSMENT
 40.582301 / -104.518975
 SE¼ SW¼ SEC.11 T7N R64W 6PM
 WELD COUNTY, COLORADO
 API # 05-123-31314
 REMEDIATION # 30816

FIGURE NO.
 6

DRAWN BY:
 EL



EAGLE
 ENVIRONMENTAL
 CONSULTING, LLC
 8000 W 44th Ave, Wheat Ridge, CO 80033
 Ph: 303-433-0479 • F: 303-325-5449



TABLES

Table 1: Photoionization Detector Reading Summary

Table 2: Soil Analytical Results Summary

TABLE 1
PHOTOIONIZATION DETECTOR READING SUMMARY
SHABLE USX AB #11-14P
CLOSURE ASSESSMENT
40.582301 / -104.518975
SE¼ SW¼ SEC.11 T7N R64W 6PM
WELD COUNTY, COLORADO
API # 05-123-31314
REMEDATION # 30816

Sample Location (Latitude/Longitude)	Date	Approximate Depth (feet)	PID Reading (ppm-v)	Lab Submission (Y/N)
WH-SS-01 @ 7' (40.582318 / -104.518989)	11/07/23	7	67.4	Y
WH-SS-02 @ 7' (40.582307 / -104.518977)	11/07/23	7	1.2	Y
WH-SS-03 @ 7' (40.582296 / -104.518987)	11/07/23	7	58.9	Y
WH-SS-04 @ 7' (40.582310 / -104.518999)	11/07/23	7	8.7	Y
WH-FS-01 @ 8' (40.582311 / -104.518990)	11/07/23	8	383.2	Y
Background-01 @ 2' (40.582317 / -104.518834)	11/07/23	2	0.8	Y
WH-N @ 0.5' (40.582332 / -104.518989)	11/07/23	0.5	0.5	N
WH-E @ 0.5' (40.582305 / -104.518960)	11/07/23	0.5	0.9	N
WH-S @ 0.5' (40.582288 / -104.518987)	11/07/23	0.5	1.0	N
WH-W @ 0.5' (40.582307 / -104.519016)	11/07/23	0.5	0.8	N
(Y/N) = Yes or No ppm-v = parts per million by volume PID = Photoionization Detector				



TABLE 2
 SOIL ANALYTICAL RESULTS SUMMARY
 SHABLE USX AB #11-14P
 CLOSURE ASSESSMENT
 40.582301 / -104.518975
 SE¼ SW¼ SEC.11 T7N R64W 6PM
 WELD COUNTY, COLORADO
 API # 05-123-31314
 REMEDIATION # 30816

Sample Location	WH-SS-01 @ 7'	WH-SS-02 @ 7'	WH-SS-03 @ 7'	WH-SS-04 @ 7'	WH-FS-01 @ 8'	Background-01 @ 2'
(Latitude / Longitude)	(40.582318 / -104.518989)	(40.582307 / -104.518977)	(40.582296 / -104.518987)	(40.582310 / -104.518999)	(40.582311 / -104.518990)	(40.582317 / -104.518834)
Sample Date	11/7/2023	11/7/2023	11/7/2023	11/7/2023	11/7/2023	11/7/2023
Sample Depth	7'	7'	7'	7'	8'	2'
PID Reading (ppm-v)	67.4	1.2	58.9	8.7	383.2	0.8
Regulatory Limits						
Chemical of Concern	Units	ECMC Table 915-1 RSSLs	ECMC Table 915-1 GSSLs	Local Clean-Up Level		
VOLATILE ORGANIC COMPOUNDS						
Benzene	mg/kg	1.2	0.0026	--	<0.00200	<0.00200
Toluene	mg/kg	490	0.69	--	<0.00200	<0.00200
Ethylbenzene	mg/kg	5.8	0.78	--	<0.00200	<0.00200
Total Xylenes	mg/kg	58	9.9	--	<0.00200	<0.00200
Naphthalene	mg/kg	2	0.0038	--	<0.00380	<0.00380
1,2,4-Trimethylbenzene	mg/kg	30	0.0081	--	<0.00200	<0.00200
1,3,5-Trimethylbenzene	mg/kg	27	0.0087	--	<0.00200	<0.00200
TOTAL PETROLEUM HYDROCARBONS						
TPH-GRO	mg/kg	500	--	--	<0.200	<0.200
TPH-DRO	mg/kg	500	--	--	<25.0	<25.0
TPH-RRO	mg/kg	500	--	--	<100	<100
POLYCYCLIC AROMATIC HYDROCARBONS						
1-Methyl-naphthalene	mg/kg	18	0.006	--	0.008*	<0.002
2-Methyl-naphthalene	mg/kg	24	0.019	--	0.004	<0.002
Acenaphthene	mg/kg	360	0.55	--	<0.020	<0.020
Anthracene	mg/kg	1800	5.8	--	<0.020	<0.020
Benzo(a)-anthracene	mg/kg	1.1	0.011	--	<0.005	<0.005
Benzo(a)-pyrene	mg/kg	0.11	0.24	--	<0.020	<0.020
Benzo(b)-fluoranthene	mg/kg	1.1	0.3	--	<0.020	<0.020
Benzo(k)-fluoranthene	mg/kg	11	2.9	--	<0.020	<0.020
Chrysene	mg/kg	110	9	--	<0.020	<0.020
Dibenzof(a,h)-anthracene	mg/kg	0.11	0.096	--	<0.020	<0.020
Fluoranthene	mg/kg	240	8.9	--	<0.020	<0.020
Fluorene	mg/kg	240	0.54	--	<0.020	<0.020
Indeno(1,2,3-cd)-pyrene	mg/kg	1.1	0.98	--	<0.020	<0.020
Pyrene	mg/kg	180	1.3	--	<0.020	<0.020
SOIL SUITABILITY (Inorganics)						
Boron	mg/L	2	--	--	0.716	0.959
pH	standard unit	6-8.3	--	--	8.23	8.11
Sodium Adsorption Ratio (SAR)	--	<6	--	--	2.47	1.84
Specific Conductance (EC)	mmhos/cm	<4	--	--	1.64	0.575
METALS						
Arsenic	mg/kg	0.68***	0.29***	4.89	3.05	3.05
Barium	mg/kg	15000	82	210	204*	163*
Cadmium	mg/kg	71	0.38	0.53	0.147	0.175
Copper	mg/kg	3100	46	--	13.1	12.9
Lead	mg/kg	400	14	17.4	11.2	11.1
Nickel	mg/kg	1500	26	--	10.0	10.4
Selenium	mg/kg	390	0.26	1.59	0.315*	0.218
Silver	mg/kg	390	0.8	--	<0.0948	<0.0907
Zinc	mg/kg	23000	370	--	<94.8	<90.7
Hexavalent Chromium	mg/kg	0.3**	0.00067**	0.1 to 1.0**	<0.244**	<0.244**

ECMC = Energy & Carbon Management Commission

mg/kg = milligrams per kilogram

mmhos/cm = millimhos per centimeter

PID = Photoionization Detector

ppm-v = parts per million by volume

mg/L = milligrams per liter

NA = Not Analyzed

Notes:

Values presented with a less than symbol (<) did not contain concentrations at or above the laboratory reporting limit and/or minimum detection limit.

Elevated metals are naturally occurring in Colorado. The Local Clean-up Levels are 1.25*Background concentrations where applicable.

Values presented in **BOLD** exceed ECMC Table 915-1 Regulatory Limits and Local Clean-up Levels where applicable. Values presented with asterisk (*) exceed ECMC Table 915-1 GSSLs, only.

**Achievable practical quantitative limits for Hexavalent Chromium in soils is in the range of 0.1 to 1 mg/kg.



ATTACHMENT A

Photo Log

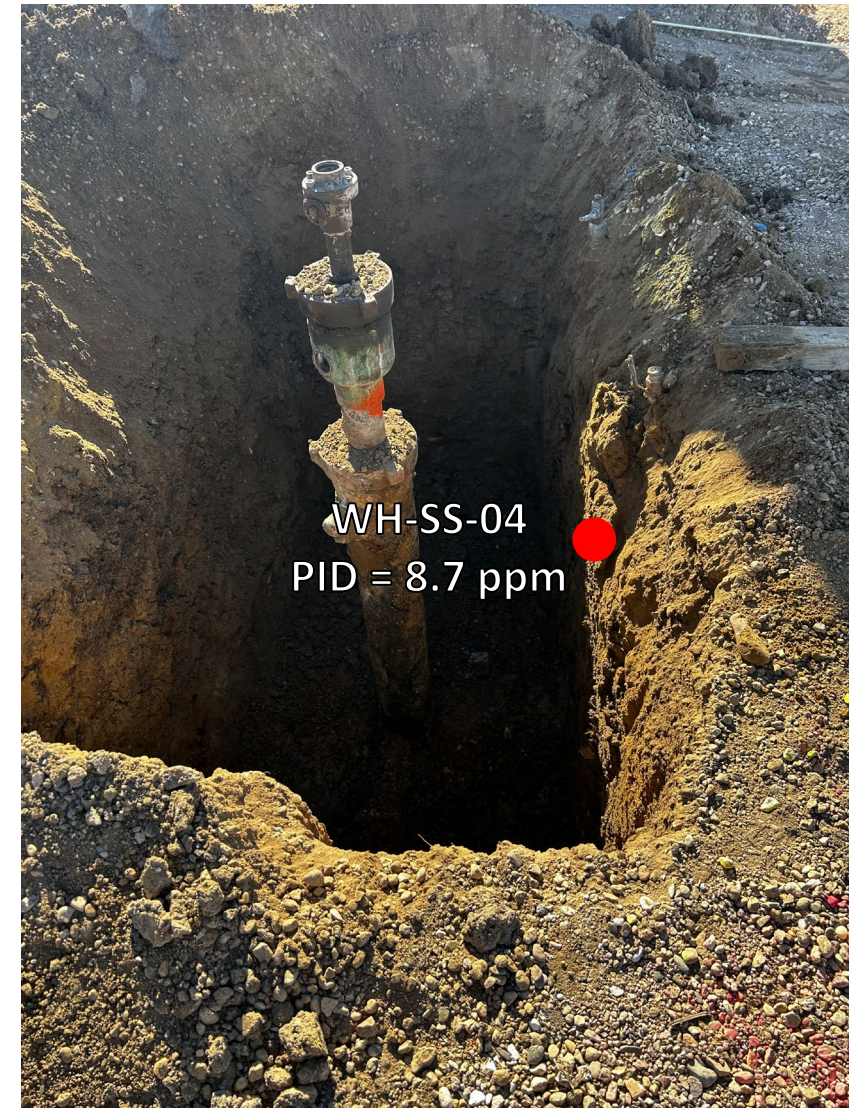
Shable USX AN #11-14P
API # 05-123-31314
Remediation # 30816

Closure Assessment

November 2023



Wellhead Excavation – 11/07/23



Looking east and looking south

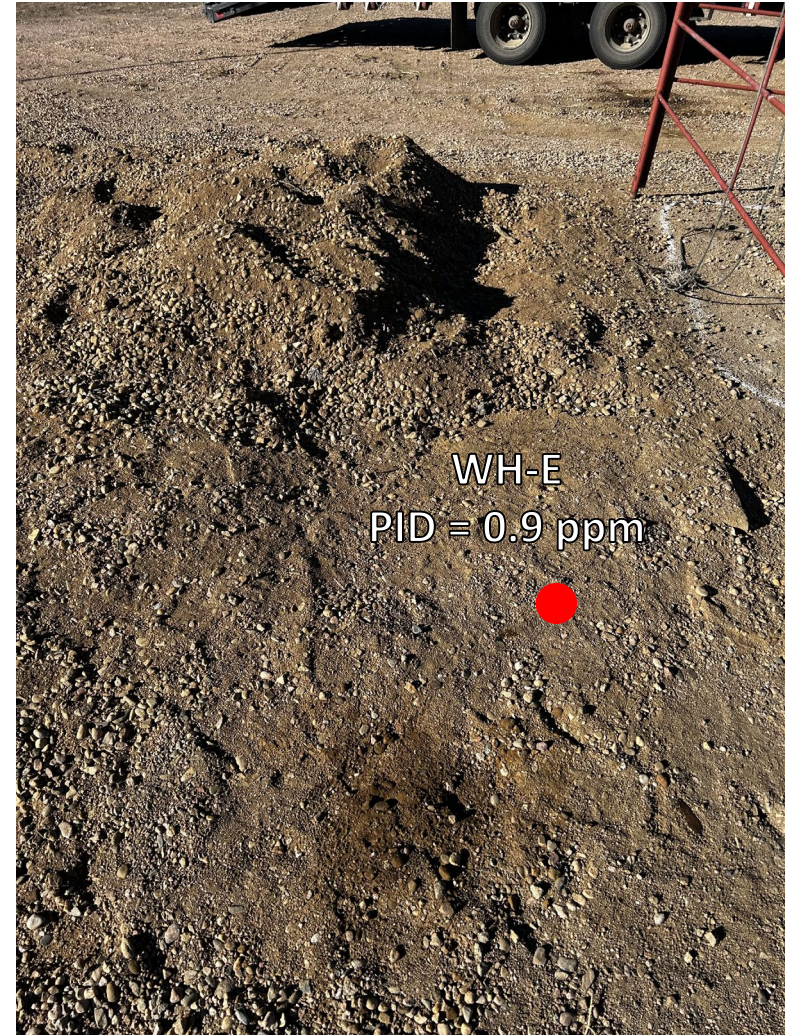
Slight petroleum hydrocarbon odor observed on base of excavation; no staining observed

Wellhead Surface – 11/07/23



Looking west

Site in good condition – no petroleum hydrocarbon staining or odor observed on surface around wellhead



Looking south

Site in good condition – no petroleum hydrocarbon staining or odor observed on surface around wellhead

Wellhead Surface – 11/07/23



Looking east

Site in good condition – no petroleum hydrocarbon staining or odor observed on surface around wellhead



Looking south

Site in good condition – no petroleum hydrocarbon staining or odor observed on surface around wellhead



ATTACHMENT B

Laboratory Analytical Reports

December 01, 2023

Eagle Environmental Consulting, LLC

Andrew Newberry

8000 W 44th Ave

Wheat Ridge CO 80033

Project Name - Noble - Shable USX AB #11-14P Project Number - [none]

Attached are your analytical results for Noble - Shable USX AB #11-14P received by Origins Laboratory, Inc. November 07, 2023. This project is associated with Origins project number Y311193-01.

The analytical results in the following report were analyzed under the guidelines of EPA Methods. These methods are identified as follows; "SW" are defined in SW-846, "EPA" are defined in 40CFR part 136 and "SM" are defined in the most current revision of Standard Methods For the Examination of Water and Wastewater.

The analytical results apply specifically to the samples and analyses specified per the attached Chain of Custody. As such, this report shall not be reproduced except in full, without the written approval of Origin's laboratory.

Unless otherwise noted, the analytical results for all soil samples are reported on a wet weight basis. All analytical analyses were performed under NELAP guidelines unless noted by a data qualifier.

Any holding time exceedances, deviations from the method specifications or deviations from Origins Laboratory's Standard Operating Procedures are outlined in the case narrative.

Thank you for selecting Origins for your analytical needs. Please contact us with any questions concerning this report, or if we can help with anything at all.

Origins Laboratory, Inc.
303.433.1322
o-squad@oelabinc.com



Eagle Environmental Consulting, LLC
8000 W 44th Ave
Wheat Ridge CO 80033

Andrew Newberry
Project Number: [none]
Project: Noble - Shable USX AB #11-14P

CROSS REFERENCE REPORT

Sample ID	Laboratory ID	Matrix	Date Sampled	Date Received
WH-SS-01@7'	Y311193-01	Soil	November 7, 2023 9:58	11/07/2023 16:00
WH-SS-02@7'	Y311193-02	Soil	November 7, 2023 10:00	11/07/2023 16:00
WH-SS-03@7'	Y311193-03	Soil	November 7, 2023 10:02	11/07/2023 16:00
WH-SS-04@7'	Y311193-04	Soil	November 7, 2023 10:04	11/07/2023 16:00
WH-FS-01@8'	Y311193-05	Soil	November 7, 2023 10:06	11/07/2023 16:00

Origins Laboratory, Inc.



The results in this report apply to the samples analyzed in accordance with the chain of custody document. This analytical report must be reproduced in its entirety.

Eagle Environmental Consulting, LLC
 8000 W 44th Ave
 Wheat Ridge CO 80033

Andrew Newberry
 Project Number: [none]
 Project: Noble - Shable USX AB #11-14P

Origins Laboratory

F-012207-01-R1
 Effective Date: 01/09/12

Sample Receipt Checklist

Origins Work Order: 421193

Client: Eagle
 Client Project ID: Shable USX AB #11-14P

Checklist Completed by: EHS
 Date/time completed: 11/7/23

Shipped Via: HD
(UPS, FedEx, Hand Delivered, Pick-up, etc.)
 Airbill #: N/A

Matrix(s) Received: (Check all that apply): Soil/Solid Water Other: _____

Cooler Number/Temperature: 117 °c / _____ °c / _____ °c (Describe) _____ °c

Thermometer ID: 7004

Requirement Description	Yes	No	N/A	Comments (if any)
If samples require cooling, was the temperature between 0°C to ≤ 6°C ⁽¹⁾ ?		<input checked="" type="checkbox"/>		<u>SD</u>
Is there ice present (document if blue ice is used)	<input checked="" type="checkbox"/>			
Are custody seals present on cooler? (if so, document in comments if they are signed and dated, broken or intact)		<input checked="" type="checkbox"/>		
Are custody seals present on each sample container? (if so, document in comments if they are signed and dated, broken or intact)		<input checked="" type="checkbox"/>		
Were all samples received intact ⁽¹⁾ ?	<input checked="" type="checkbox"/>			
Was adequate sample volume provided ⁽¹⁾ ?	<input checked="" type="checkbox"/>			
Are short holding time analytes or samples with HTs due within 48 hours present ⁽¹⁾ ?		<input checked="" type="checkbox"/>		
Is a chain-of-custody (COC) present and filled out completely ⁽¹⁾ ?	<input checked="" type="checkbox"/>			
Does the COC agree with the number and type of sample bottles received ⁽¹⁾ ?	<input checked="" type="checkbox"/>			
Do the sample IDs on the bottle labels match the COC ⁽¹⁾ ?	<input checked="" type="checkbox"/>			
Is the COC properly relinquished by the client with date and time recorded ⁽¹⁾ ?	<input checked="" type="checkbox"/>			
For volatiles in water – is there headspace (> ¼ inch bubble) present? If yes, contact client and note in narrative.			<input checked="" type="checkbox"/>	
Are samples preserved that require preservation and was it checked ⁽¹⁾ ? (note ID of confirmation instrument used in comments) / (preservation is not confirmed for subcontracted analyses in order to insure sample integrity)/(pH <2 for samples preserved with HNO3, HCL, H2SO4) / (pH >10 for samples preserved with NaAsO2+NaOH, ZnAc+NaOH)			<input checked="" type="checkbox"/>	
Additional Comments (if any):				

⁽¹⁾If NO, then contact the client before proceeding with analysis and note date/time and person contacted as well as the corrective action to in the additional comments (above) and the case narrative.

Reviewed by (Project Manager) [Signature]

Date/Time Reviewed 11/9/23

Origins Laboratory, Inc.

[Signature]

The results in this report apply to the samples analyzed in accordance with the chain of custody document. This analytical report must be reproduced in its entirety.

Eagle Environmental Consulting, LLC
 8000 W 44th Ave
 Wheat Ridge CO 80033

Andrew Newberry
 Project Number: [none]
 Project: Noble - Shable USX AB #11-14P

WH-SS-01@7'
11/7/2023 9:58:00AM

Analyte	Result	Min Detection Limit	Reporting Limit	Units	Dilution	Batch	Prepared	Analyzed	Notes
---------	--------	---------------------	-----------------	-------	----------	-------	----------	----------	-------

Origins Laboratory, Inc.
Y311193-01 (Soil)

Boron (DTPA Sorbitol)

Boron	0.716		0.100	mg/L	1	B3K0917	11/09/2023	11/10/2023	
-------	-------	--	-------	------	---	---------	------------	------------	--

DRO/ORO by EPA 8015D

Diesel (C10-C28)	ND		25.0	mg/kg	1	B3K0801	11/08/2023	11/10/2023	U
Residual Range Organics (C28-C40)	ND		100	"	"	"	"	"	U

Surrogate: o-Terphenyl	67.9 %		50-150			"	"	"	
------------------------	--------	--	--------	--	--	---	---	---	--

GBTEX+TMBs by 8260D

1,2,4-Trimethylbenzene	ND		0.00200	mg/kg	1	B3K0736	11/08/2023	11/09/2023	U
1,3,5-Trimethylbenzene	ND		0.00200	"	"	"	"	"	U
Benzene	ND		0.00200	"	"	"	"	"	U
Ethylbenzene	ND		0.00200	"	"	"	"	"	U
Naphthalene	ND		0.00380	"	"	"	"	"	U
Toluene	ND		0.00200	"	"	"	"	"	U
Xylenes, total	ND		0.00200	"	"	"	"	"	U
Gasoline Range Hydrocarbons	ND		0.200	"	"	"	"	"	U

Origins Laboratory, Inc.



The results in this report apply to the samples analyzed in accordance with the chain of custody document. This analytical report must be reproduced in its entirety.

Eagle Environmental Consulting, LLC
 8000 W 44th Ave
 Wheat Ridge CO 80033

Andrew Newberry
 Project Number: [none]
 Project: Noble - Shable USX AB #11-14P

WH-SS-01@7'
11/7/2023 9:58:00AM

Analyte	Result	Min Detection Limit	Reporting Limit	Units	Dilution	Batch	Prepared	Analyzed	Notes
---------	--------	---------------------	-----------------	-------	----------	-------	----------	----------	-------

Origins Laboratory, Inc.
Y311193-01 (Soil)

GBTEX+TMBs by 8260D

Surrogate: 1,2-Dichloroethane-d4	110 %		70-130			B3K07 36	11/08/2023	11/09/2023	
Surrogate: Toluene-d8	93.3 %		70-130			"	"	"	
Surrogate: 4-Bromofluorobenzene	99.2 %		70-130			"	"	"	

Metals by Saturated Paste by EPA 6010

Calcium	6.44		0.499	meq/L	10	[CALC]	11/09/2023	11/13/2023	
Magnesium	4.39		0.823	"	"	"	"	"	
Sodium	5.74		0.435	"	"	"	"	"	

PAH by EPA 8270E

1-Methylnaphthalene	0.008		0.002	mg/kg	1	B3K0826	11/08/2023	11/15/2023	
2-Methylnaphthalene	0.004		0.002	"	"	"	"	"	
Acenaphthene	ND		0.020	"	"	"	"	"	U
Anthracene	ND		0.020	"	"	"	"	"	U
Benzo (a) anthracene	ND		0.005	"	"	"	"	"	U
Benzo (a) pyrene	ND		0.020	"	"	"	"	"	U
Benzo (b) fluoranthene	ND		0.020	"	"	"	"	"	U
Benzo (k) fluoranthene	ND		0.020	"	"	"	"	"	U
Chrysene	ND		0.020	"	"	"	"	"	U
Dibenz (a,h) anthracene	ND		0.020	"	"	"	"	"	U
Fluoranthene	ND		0.020	"	"	"	"	"	U

Origins Laboratory, Inc.



The results in this report apply to the samples analyzed in accordance with the chain of custody document. This analytical report must be reproduced in its entirety.

Eagle Environmental Consulting, LLC
 8000 W 44th Ave
 Wheat Ridge CO 80033

Andrew Newberry
 Project Number: [none]
 Project: Noble - Shable USX AB #11-14P

WH-SS-01@7'
11/7/2023 9:58:00AM

Analyte	Result	Min Detection Limit	Reporting Limit	Units	Dilution	Batch	Prepared	Analyzed	Notes
---------	--------	---------------------	-----------------	-------	----------	-------	----------	----------	-------

Origins Laboratory, Inc.
Y311193-01 (Soil)

PAH by EPA 8270E

Fluorene	ND		0.020	mg/kg	1	B3K0826	11/08/2023	11/15/2023	U
Indeno (1,2,3-cd) pyrene	ND		0.020	"	"	"	"	"	U
Pyrene	ND		0.020	"	"	"	"	"	U

Surrogate: Fluorene-d10	99.6 %		60-130			"	"	"	
Surrogate: Anthracene-d10	107 %		60-130			"	"	"	
Surrogate: Pyrene-d10	99.1 %		60-130			"	"	"	
Surrogate: Benzo (a) pyrene-d12	98.2 %		60-130			"	"	"	

pH in Soil by 9045D

pH	8.23			pH Units	1	B3K0925	11/09/2023	11/10/2023	
----	------	--	--	----------	---	---------	------------	------------	--

SAR by 20B Saturated Paste

SAR	2.47		0.0100	SAR	1	B3K0921	11/09/2023	11/13/2023	
-----	------	--	--------	-----	---	---------	------------	------------	--

Specific Conductance Mod. 9050A

Specific Conductance (EC)	1.64		0.00500	mmhos/cm	1	B3K0925	11/09/2023	11/10/2023	
---------------------------	------	--	---------	----------	---	---------	------------	------------	--

Table 915 metals by EPA 6020B

Arsenic	3.05		0.0948	mg/kg	10	B3K0804	11/08/2023	11/10/2023	
---------	------	--	--------	-------	----	---------	------------	------------	--

Origins Laboratory, Inc.



The results in this report apply to the samples analyzed in accordance with the chain of custody document. This analytical report must be reproduced in its entirety.

Eagle Environmental Consulting, LLC
 8000 W 44th Ave
 Wheat Ridge CO 80033

Andrew Newberry
 Project Number: [none]
 Project: Noble - Shable USX AB #11-14P

WH-SS-01@7'
11/7/2023 9:58:00AM

Analyte	Result	Min Detection Limit	Reporting Limit	Units	Dilution	Batch	Prepared	Analyzed	Notes
---------	--------	---------------------	-----------------	-------	----------	-------	----------	----------	-------

Origins Laboratory, Inc.
Y311193-01 (Soil)

Table 915 metals by EPA 6020B

Barium	204		9.48	mg/kg	10	B3K0804	11/08/2023	11/10/2023	
Cadmium	0.147		0.0948	"	"	"	"	"	
Copper	13.1		9.48	"	"	"	"	"	
Lead	11.2		9.48	"	"	"	"	"	
Nickel	10.0		9.48	"	"	"	"	"	
Selenium	0.315		0.0948	"	"	"	"	"	
Silver	ND		0.0948	"	"	"	"	"	
Zinc	ND		94.8	"	"	"	"	"	

Total Metals by 7196A

Chromium, Hexavalent	ND	0.244	0.5	mg/Kg	1	L716308	11/07/2023	11/10/2023	
----------------------	----	-------	-----	-------	---	---------	------------	------------	--

Origins Laboratory, Inc.



The results in this report apply to the samples analyzed in accordance with the chain of custody document. This analytical report must be reproduced in its entirety.

Eagle Environmental Consulting, LLC
 8000 W 44th Ave
 Wheat Ridge CO 80033

Andrew Newberry
 Project Number: [none]
 Project: Noble - Shable USX AB #11-14P

WH-SS-02@7'

11/7/2023 10:00:00AM

Analyte	Result	Min Detection Limit	Reporting Limit	Units	Dilution	Batch	Prepared	Analyzed	Notes
---------	--------	---------------------	-----------------	-------	----------	-------	----------	----------	-------

Origins Laboratory, Inc.
Y311193-02 (Soil)

Boron (DTPA Sorbitol)

Boron	0.959		0.100	mg/L	1	B3K0917	11/09/2023	11/10/2023	
-------	-------	--	-------	------	---	---------	------------	------------	--

DRO/ORO by EPA 8015D

Diesel (C10-C28)	ND		25.0	mg/kg	1	B3K0801	11/08/2023	11/10/2023	U
Residual Range Organics (C28-C40)	ND		100	"	"	"	"	"	U

Surrogate: o-Terphenyl	78.0 %		50-150			"	"	"	
------------------------	--------	--	--------	--	--	---	---	---	--

GBTEX+TMBs by 8260D

1,2,4-Trimethylbenzene	ND		0.00200	mg/kg	1	B3K0736	11/08/2023	11/09/2023	U
1,3,5-Trimethylbenzene	ND		0.00200	"	"	"	"	"	U
Benzene	ND		0.00200	"	"	"	"	"	U
Ethylbenzene	ND		0.00200	"	"	"	"	"	U
Naphthalene	ND		0.00380	"	"	"	"	"	U
Toluene	ND		0.00200	"	"	"	"	"	U
Xylenes, total	ND		0.00200	"	"	"	"	"	U
Gasoline Range Hydrocarbons	ND		0.200	"	"	"	"	"	U

Origins Laboratory, Inc.



The results in this report apply to the samples analyzed in accordance with the chain of custody document. This analytical report must be reproduced in its entirety.

Eagle Environmental Consulting, LLC
 8000 W 44th Ave
 Wheat Ridge CO 80033

Andrew Newberry
 Project Number: [none]
 Project: Noble - Shable USX AB #11-14P

WH-SS-02@7'

11/7/2023 10:00:00AM

Analyte	Result	Min Detection Limit	Reporting Limit	Units	Dilution	Batch	Prepared	Analyzed	Notes
---------	--------	---------------------	-----------------	-------	----------	-------	----------	----------	-------

Origins Laboratory, Inc.
Y311193-02 (Soil)

GBTEX+TMBs by 8260D

Surrogate: 1,2-Dichloroethane-d4	108 %		70-130			B3K07 36	11/08/2023	11/09/2023	
Surrogate: Toluene-d8	94.2 %		70-130			"	"	"	
Surrogate: 4-Bromofluorobenzene	98.9 %		70-130			"	"	"	

Metals by Saturated Paste by EPA 6010

Calcium	1.13		0.499	meq/L	10	[CALC]	11/09/2023	11/13/2023	
Magnesium	ND		0.823	"	"	"	"	"	
Sodium	1.79		0.435	"	"	"	"	"	

PAH by EPA 8270E

1-Methylnaphthalene	ND		0.002	mg/kg	1	B3K0826	11/08/2023	11/15/2023	U
2-Methylnaphthalene	ND		0.002	"	"	"	"	"	U
Acenaphthene	ND		0.020	"	"	"	"	"	U
Anthracene	ND		0.020	"	"	"	"	"	U
Benzo (a) anthracene	ND		0.005	"	"	"	"	"	U
Benzo (a) pyrene	ND		0.020	"	"	"	"	"	U
Benzo (b) fluoranthene	ND		0.020	"	"	"	"	"	U
Benzo (k) fluoranthene	ND		0.020	"	"	"	"	"	U
Chrysene	ND		0.020	"	"	"	"	"	U
Dibenz (a,h) anthracene	ND		0.020	"	"	"	"	"	U

Origins Laboratory, Inc.



The results in this report apply to the samples analyzed in accordance with the chain of custody document. This analytical report must be reproduced in its entirety.

Eagle Environmental Consulting, LLC
 8000 W 44th Ave
 Wheat Ridge CO 80033

Andrew Newberry
 Project Number: [none]
 Project: Noble - Shable USX AB #11-14P

WH-SS-02@7'

11/7/2023 10:00:00AM

Analyte	Result	Min Detection Limit	Reporting Limit	Units	Dilution	Batch	Prepared	Analyzed	Notes
---------	--------	---------------------	-----------------	-------	----------	-------	----------	----------	-------

Origins Laboratory, Inc.
Y311193-02 (Soil)

PAH by EPA 8270E

Fluoranthene	ND		0.020	mg/kg	1	B3K0826	11/08/2023	11/15/2023	U
Fluorene	ND		0.020	"	"	"	"	"	U
Indeno (1,2,3-cd) pyrene	ND		0.020	"	"	"	"	"	U
Pyrene	ND		0.020	"	"	"	"	"	U

Surrogate: Fluorene-d10	99.7 %		60-130			"	"	"	
Surrogate: Anthracene-d10	109 %		60-130			"	"	"	
Surrogate: Pyrene-d10	94.7 %		60-130			"	"	"	
Surrogate: Benzo (a) pyrene-d12	99.0 %		60-130			"	"	"	

pH in Soil by 9045D

pH	8.45			pH Units	1	B3K0925	11/09/2023	11/10/2023	
----	------	--	--	----------	---	---------	------------	------------	--

SAR by 20B Saturated Paste

SAR	1.84		0.0100	SAR	1	B3K0921	11/09/2023	11/13/2023	
-----	------	--	--------	-----	---	---------	------------	------------	--

Specific Conductance Mod. 9050A

Specific Conductance (EC)	0.575		0.00500	mmhos/cm	1	B3K0925	11/09/2023	11/10/2023	
---------------------------	-------	--	---------	----------	---	---------	------------	------------	--

Table 915 metals by EPA 6020B

Origins Laboratory, Inc.



The results in this report apply to the samples analyzed in accordance with the chain of custody document. This analytical report must be reproduced in its entirety.

Eagle Environmental Consulting, LLC
 8000 W 44th Ave
 Wheat Ridge CO 80033

Andrew Newberry
 Project Number: [none]
 Project: Noble - Shable USX AB #11-14P

WH-SS-02@7'

11/7/2023 10:00:00AM

Analyte	Result	Min Detection Limit	Reporting Limit	Units	Dilution	Batch	Prepared	Analyzed	Notes
---------	--------	---------------------	-----------------	-------	----------	-------	----------	----------	-------

Origins Laboratory, Inc.
Y311193-02 (Soil)

Table 915 metals by EPA 6020B

Arsenic	3.05		0.0907	mg/kg	10	B3K1407	11/14/2023	11/16/2023	
Barium	163		9.07	"	"	"	"	"	
Cadmium	0.175		0.0907	"	"	"	"	"	
Copper	12.9		9.07	"	"	"	"	"	
Lead	11.1		9.07	"	"	"	"	"	
Nickel	10.4		9.07	"	"	"	"	"	
Selenium	0.218		0.0907	"	"	"	"	"	
Silver	ND		0.0907	"	"	"	"	"	
Zinc	ND		90.7	"	"	"	"	"	

Total Metals by 7196A

Chromium, Hexavalent	ND	0.244	0.5	mg/Kg	1	L716308	11/07/2023	11/10/2023	
----------------------	----	-------	-----	-------	---	---------	------------	------------	--

Origins Laboratory, Inc.



The results in this report apply to the samples analyzed in accordance with the chain of custody document. This analytical report must be reproduced in its entirety.

Eagle Environmental Consulting, LLC
 8000 W 44th Ave
 Wheat Ridge CO 80033

Andrew Newberry
 Project Number: [none]
 Project: Noble - Shable USX AB #11-14P

WH-SS-03@7'

11/7/2023 10:02:00AM

Analyte	Result	Min Detection Limit	Reporting Limit	Units	Dilution	Batch	Prepared	Analyzed	Notes
---------	--------	---------------------	-----------------	-------	----------	-------	----------	----------	-------

Origins Laboratory, Inc.
Y311193-03 (Soil)

Boron (DTPA Sorbitol)

Boron	1.43		0.0998	mg/L	1	B3K0917	11/09/2023	11/10/2023	
-------	------	--	--------	------	---	---------	------------	------------	--

DRO/ORO by EPA 8015D

Diesel (C10-C28)	ND		25.0	mg/kg	1	B3K0801	11/08/2023	11/10/2023	U
Residual Range Organics (C28-C40)	ND		100	"	"	"	"	"	U

Surrogate: o-Terphenyl	76.1 %		50-150			"	"	"	
------------------------	--------	--	--------	--	--	---	---	---	--

GBTEX+TMBs by 8260D

1,2,4-Trimethylbenzene	ND		0.00200	mg/kg	1	B3K0736	11/08/2023	11/09/2023	U
1,3,5-Trimethylbenzene	ND		0.00200	"	"	"	"	"	U
Benzene	ND		0.00200	"	"	"	"	"	U
Ethylbenzene	ND		0.00200	"	"	"	"	"	U
Naphthalene	ND		0.00380	"	"	"	"	"	U
Toluene	ND		0.00200	"	"	"	"	"	U
Xylenes, total	ND		0.00200	"	"	"	"	"	U
Gasoline Range Hydrocarbons	ND		0.200	"	"	"	"	"	U

Origins Laboratory, Inc.



The results in this report apply to the samples analyzed in accordance with the chain of custody document. This analytical report must be reproduced in its entirety.

Eagle Environmental Consulting, LLC
 8000 W 44th Ave
 Wheat Ridge CO 80033

Andrew Newberry
 Project Number: [none]
 Project: Noble - Shable USX AB #11-14P

WH-SS-03@7'

11/7/2023 10:02:00AM

Analyte	Result	Min Detection Limit	Reporting Limit	Units	Dilution	Batch	Prepared	Analyzed	Notes
---------	--------	---------------------	-----------------	-------	----------	-------	----------	----------	-------

Origins Laboratory, Inc.
Y311193-03 (Soil)

GBTEX+TMBs by 8260D

Surrogate: 1,2-Dichloroethane-d4	112 %		70-130			B3K07 36	11/08/2023	11/09/2023	
Surrogate: Toluene-d8	93.0 %		70-130			"	"	"	
Surrogate: 4-Bromofluorobenzene	98.9 %		70-130			"	"	"	

Metals by Saturated Paste by EPA 6010

Calcium	21.2		0.499	meq/L	10	[CALC]	11/09/2023	11/13/2023	
Magnesium	18.1		0.823	"	"	"	"	"	
Sodium	30.2		0.435	"	"	"	"	"	

PAH by EPA 8270E

1-Methylnaphthalene	0.010		0.002	mg/kg	1	B3K0826	11/08/2023	11/15/2023	
2-Methylnaphthalene	0.005		0.002	"	"	"	"	"	
Acenaphthene	ND		0.020	"	"	"	"	"	U
Anthracene	ND		0.020	"	"	"	"	"	U
Benzo (a) anthracene	ND		0.005	"	"	"	"	"	U
Benzo (a) pyrene	ND		0.020	"	"	"	"	"	U
Benzo (b) fluoranthene	ND		0.020	"	"	"	"	"	U
Benzo (k) fluoranthene	ND		0.020	"	"	"	"	"	U
Chrysene	ND		0.020	"	"	"	"	"	U
Dibenz (a,h) anthracene	ND		0.020	"	"	"	"	"	U
Fluoranthene	ND		0.020	"	"	"	"	"	U

Origins Laboratory, Inc.



The results in this report apply to the samples analyzed in accordance with the chain of custody document. This analytical report must be reproduced in its entirety.

Eagle Environmental Consulting, LLC
 8000 W 44th Ave
 Wheat Ridge CO 80033

Andrew Newberry
 Project Number: [none]
 Project: Noble - Shable USX AB #11-14P

WH-SS-03@7'

11/7/2023 10:02:00AM

Analyte	Result	Min Detection Limit	Reporting Limit	Units	Dilution	Batch	Prepared	Analyzed	Notes
---------	--------	---------------------	-----------------	-------	----------	-------	----------	----------	-------

Origins Laboratory, Inc.
Y311193-03 (Soil)

PAH by EPA 8270E

Fluorene	ND		0.020	mg/kg	1	B3K0826	11/08/2023	11/15/2023	U
Indeno (1,2,3-cd) pyrene	ND		0.020	"	"	"	"	"	U
Pyrene	ND		0.020	"	"	"	"	"	U

Surrogate: Fluorene-d10	100 %		60-130			"	"	"	
Surrogate: Anthracene-d10	91.1 %		60-130			"	"	"	
Surrogate: Pyrene-d10	102 %		60-130			"	"	"	
Surrogate: Benzo (a) pyrene-d12	94.4 %		60-130			"	"	"	

pH in Soil by 9045D

pH	8.11			pH Units	1	B3K0925	11/09/2023	11/10/2023	
----	------	--	--	----------	---	---------	------------	------------	--

SAR by 20B Saturated Paste

SAR	6.81		0.0100	SAR	1	B3K0921	11/09/2023	11/13/2023	
-----	------	--	--------	-----	---	---------	------------	------------	--

Specific Conductance Mod. 9050A

Specific Conductance (EC)	5.16		0.00500	mmhos/cm	1	B3K0925	11/09/2023	11/10/2023	
---------------------------	------	--	---------	----------	---	---------	------------	------------	--

Table 915 metals by EPA 6020B

Arsenic	3.46		0.0923	mg/kg	10	B3K1407	11/14/2023	11/16/2023	
---------	------	--	--------	-------	----	---------	------------	------------	--

Origins Laboratory, Inc.



The results in this report apply to the samples analyzed in accordance with the chain of custody document. This analytical report must be reproduced in its entirety.

Eagle Environmental Consulting, LLC
 8000 W 44th Ave
 Wheat Ridge CO 80033

Andrew Newberry
 Project Number: [none]
 Project: Noble - Shable USX AB #11-14P

WH-SS-03@7'

11/7/2023 10:02:00AM

Analyte	Result	Min Detection Limit	Reporting Limit	Units	Dilution	Batch	Prepared	Analyzed	Notes
---------	--------	---------------------	-----------------	-------	----------	-------	----------	----------	-------

Origins Laboratory, Inc.
Y311193-03 (Soil)

Table 915 metals by EPA 6020B

Barium	73.2		9.23	mg/kg	10	B3K1407	11/14/2023	11/16/2023	
Cadmium	0.667		0.0923	"	"	"	"	"	
Copper	21.8		9.23	"	"	"	"	"	
Lead	15.6		9.23	"	"	"	"	"	
Nickel	20.9		9.23	"	"	"	"	"	
Selenium	0.253		0.0923	"	"	"	"	"	
Silver	ND		0.0923	"	"	"	"	"	
Zinc	ND		92.3	"	"	"	"	"	

Total Metals by 7196A

Chromium, Hexavalent	ND	0.244	0.5	mg/Kg	1	L716308	11/07/2023	11/10/2023	
----------------------	----	-------	-----	-------	---	---------	------------	------------	--

Origins Laboratory, Inc.



The results in this report apply to the samples analyzed in accordance with the chain of custody document. This analytical report must be reproduced in its entirety.

Eagle Environmental Consulting, LLC
 8000 W 44th Ave
 Wheat Ridge CO 80033

Andrew Newberry
 Project Number: [none]
 Project: Noble - Shable USX AB #11-14P

WH-SS-04@7'

11/7/2023 10:04:00AM

Analyte	Result	Min Detection Limit	Reporting Limit	Units	Dilution	Batch	Prepared	Analyzed	Notes
---------	--------	---------------------	-----------------	-------	----------	-------	----------	----------	-------

Origins Laboratory, Inc.
Y311193-04 (Soil)

Boron (DTPA Sorbitol)

Boron	0.420		0.100	mg/L	1	B3K0917	11/09/2023	11/10/2023	
-------	-------	--	-------	------	---	---------	------------	------------	--

DRO/ORO by EPA 8015D

Diesel (C10-C28)	ND		25.0	mg/kg	1	B3K0801	11/08/2023	11/10/2023	U
Residual Range Organics (C28-C40)	ND		100	"	"	"	"	"	U

Surrogate: o-Terphenyl	80.3 %		50-150			"	"	"	
------------------------	--------	--	--------	--	--	---	---	---	--

GBTEX+TMBs by 8260D

1,2,4-Trimethylbenzene	ND		0.00200	mg/kg	1	B3K0736	11/08/2023	11/09/2023	U
1,3,5-Trimethylbenzene	ND		0.00200	"	"	"	"	"	U
Benzene	ND		0.00200	"	"	"	"	"	U
Ethylbenzene	ND		0.00200	"	"	"	"	"	U
Naphthalene	ND		0.00380	"	"	"	"	"	U
Toluene	ND		0.00200	"	"	"	"	"	U
Xylenes, total	ND		0.00200	"	"	"	"	"	U
Gasoline Range Hydrocarbons	ND		0.200	"	"	"	"	"	U

Origins Laboratory, Inc.



The results in this report apply to the samples analyzed in accordance with the chain of custody document. This analytical report must be reproduced in its entirety.

Eagle Environmental Consulting, LLC
 8000 W 44th Ave
 Wheat Ridge CO 80033

Andrew Newberry
 Project Number: [none]
 Project: Noble - Shable USX AB #11-14P

WH-SS-04@7'

11/7/2023 10:04:00AM

Analyte	Result	Min Detection Limit	Reporting Limit	Units	Dilution	Batch	Prepared	Analyzed	Notes
---------	--------	---------------------	-----------------	-------	----------	-------	----------	----------	-------

Origins Laboratory, Inc.
Y311193-04 (Soil)

GBTEX+TMBs by 8260D

Surrogate: 1,2-Dichloroethane-d4	109 %		70-130			B3K07 36	11/08/2023	11/09/2023	
Surrogate: Toluene-d8	93.8 %		70-130			"	"	"	
Surrogate: 4-Bromofluorobenzene	98.2 %		70-130			"	"	"	

Metals by Saturated Paste by EPA 6010

Calcium	1.67		0.499	meq/L	10	[CALC]	11/09/2023	11/13/2023	
Magnesium	ND		0.823	"	"	"	"	"	
Sodium	ND		0.435	"	"	"	"	"	

PAH by EPA 8270E

1-Methylnaphthalene	ND		0.002	mg/kg	1	B3K0826	11/08/2023	11/15/2023	U
2-Methylnaphthalene	ND		0.002	"	"	"	"	"	U
Acenaphthene	ND		0.020	"	"	"	"	"	U
Anthracene	ND		0.020	"	"	"	"	"	U
Benzo (a) anthracene	ND		0.005	"	"	"	"	"	U
Benzo (a) pyrene	ND		0.020	"	"	"	"	"	U
Benzo (b) fluoranthene	ND		0.020	"	"	"	"	"	U
Benzo (k) fluoranthene	ND		0.020	"	"	"	"	"	U
Chrysene	ND		0.020	"	"	"	"	"	U
Dibenz (a,h) anthracene	ND		0.020	"	"	"	"	"	U

Origins Laboratory, Inc.



The results in this report apply to the samples analyzed in accordance with the chain of custody document. This analytical report must be reproduced in its entirety.

Eagle Environmental Consulting, LLC
 8000 W 44th Ave
 Wheat Ridge CO 80033

Andrew Newberry
 Project Number: [none]
 Project: Noble - Shable USX AB #11-14P

WH-SS-04@7'

11/7/2023 10:04:00AM

Analyte	Result	Min Detection Limit	Reporting Limit	Units	Dilution	Batch	Prepared	Analyzed	Notes
---------	--------	---------------------	-----------------	-------	----------	-------	----------	----------	-------

Origins Laboratory, Inc.
Y311193-04 (Soil)

PAH by EPA 8270E

Fluoranthene	ND		0.020	mg/kg	1	B3K0826	11/08/2023	11/15/2023	U
Fluorene	ND		0.020	"	"	"	"	"	U
Indeno (1,2,3-cd) pyrene	ND		0.020	"	"	"	"	"	U
Pyrene	ND		0.020	"	"	"	"	"	U

Surrogate: Fluorene-d10	99.7 %		60-130			"	"	"	
Surrogate: Anthracene-d10	84.5 %		60-130			"	"	"	
Surrogate: Pyrene-d10	97.7 %		60-130			"	"	"	
Surrogate: Benzo (a) pyrene-d12	94.4 %		60-130			"	"	"	

pH in Soil by 9045D

pH	8.33			pH Units	1	B3K0926	11/09/2023	11/10/2023	
----	------	--	--	----------	---	---------	------------	------------	--

SAR by 20B Saturated Paste

SAR	0.227		0.0100	SAR	1	B3K0922	11/09/2023	11/13/2023	
-----	-------	--	--------	-----	---	---------	------------	------------	--

Specific Conductance Mod. 9050A

Specific Conductance (EC)	0.436		0.00500	mmhos/cm	1	B3K0926	11/09/2023	11/10/2023	
---------------------------	-------	--	---------	----------	---	---------	------------	------------	--

Table 915 metals by EPA 6020B

Origins Laboratory, Inc.



The results in this report apply to the samples analyzed in accordance with the chain of custody document. This analytical report must be reproduced in its entirety.

Eagle Environmental Consulting, LLC
 8000 W 44th Ave
 Wheat Ridge CO 80033

Andrew Newberry
 Project Number: [none]
 Project: Noble - Shable USX AB #11-14P

WH-SS-04@7'

11/7/2023 10:04:00AM

Analyte	Result	Min Detection Limit	Reporting Limit	Units	Dilution	Batch	Prepared	Analyzed	Notes
---------	--------	---------------------	-----------------	-------	----------	-------	----------	----------	-------

Origins Laboratory, Inc.
Y311193-04 (Soil)

Table 915 metals by EPA 6020B

Arsenic	6.15		0.0885	mg/kg	10	B3K1407	11/14/2023	11/16/2023	
Barium	278		8.85	"	"	"	"	"	
Cadmium	0.164		0.0885	"	"	"	"	"	
Copper	9.72		8.85	"	"	"	"	"	
Lead	8.85		8.85	"	"	"	"	"	
Nickel	ND		8.85	"	"	"	"	"	
Selenium	0.315		0.0885	"	"	"	"	"	
Silver	ND		0.0885	"	"	"	"	"	
Zinc	ND		88.5	"	"	"	"	"	

Total Metals by 7196A

Chromium, Hexavalent	ND	0.244	0.5	mg/Kg	1	L716308	11/07/2023	11/10/2023	
----------------------	----	-------	-----	-------	---	---------	------------	------------	--

Origins Laboratory, Inc.



The results in this report apply to the samples analyzed in accordance with the chain of custody document. This analytical report must be reproduced in its entirety.

Eagle Environmental Consulting, LLC
 8000 W 44th Ave
 Wheat Ridge CO 80033

Andrew Newberry
 Project Number: [none]
 Project: Noble - Shable USX AB #11-14P

WH-FS-01@8'

11/7/2023 10:06:00AM

Analyte	Result	Min Detection Limit	Reporting Limit	Units	Dilution	Batch	Prepared	Analyzed	Notes
---------	--------	---------------------	-----------------	-------	----------	-------	----------	----------	-------

Origins Laboratory, Inc.
Y311193-05 (Soil)

Boron (DTPA Sorbitol)

Boron	1.01		0.0987	mg/L	1	B3K0917	11/09/2023	11/10/2023	
-------	------	--	--------	------	---	---------	------------	------------	--

DRO/ORO by EPA 8015D

Diesel (C10-C28)	1030		25.0	mg/kg	1	B3K0801	11/08/2023	11/10/2023	
Residual Range Organics (C28-C40)	527		100	"	"	"	"	"	

Surrogate: o-Terphenyl	149 %		50-150			"	"	"	S-04
------------------------	-------	--	--------	--	--	---	---	---	------

GBTEX+TMBs by 8260D

1,2,4-Trimethylbenzene	0.137		0.0500	mg/kg	25	B3K0736	11/08/2023	11/09/2023	
1,3,5-Trimethylbenzene	0.292		0.0500	"	"	"	"	"	
Benzene	ND		0.00200	"	1	"	"	11/09/2023	U
Ethylbenzene	0.00494		0.00200	"	"	"	"	"	
Naphthalene	0.164		0.0950	"	25	"	"	11/09/2023	
Toluene	ND		0.00200	"	1	"	"	11/09/2023	U
Xylenes, total	0.00302		0.00200	"	"	"	"	"	
Gasoline Range Hydrocarbons	76.4		5.00	"	25	"	"	11/09/2023	

Surrogate: 1,2-Dichloroethane-d4	102 %		70-130			"	"	"	
Surrogate: Toluene-d8	96.3 %		70-130			"	"	"	

Origins Laboratory, Inc.



The results in this report apply to the samples analyzed in accordance with the chain of custody document. This analytical report must be reproduced in its entirety.

Eagle Environmental Consulting, LLC
 8000 W 44th Ave
 Wheat Ridge CO 80033

Andrew Newberry
 Project Number: [none]
 Project: Noble - Shable USX AB #11-14P

WH-FS-01@8'

11/7/2023 10:06:00AM

Analyte	Result	Min Detection Limit	Reporting Limit	Units	Dilution	Batch	Prepared	Analyzed	Notes
---------	--------	---------------------	-----------------	-------	----------	-------	----------	----------	-------

Origins Laboratory, Inc.
Y311193-05 (Soil)

GBTEX+TMBs by 8260D

Surrogate: 4-Bromofluorobenzene	99.1 %		70-130			B3K07 36	11/08/2023	11/09/2023	
---------------------------------	--------	--	--------	--	--	-------------	------------	------------	--

Metals by Saturated Paste by EPA 6010

Calcium	21.7	0.499	meq/L	10	[CALC]		11/09/2023	11/13/2023	
Magnesium	9.53	0.823	"	"	"	"	"	"	
Sodium	10.7	0.435	"	"	"	"	"	"	

PAH by EPA 8270E

1-Methylnaphthalene	0.819	0.002	mg/kg	1	B3K0826		11/08/2023	11/15/2023	
2-Methylnaphthalene	0.385	0.002	"	"	"	"	"	"	
Acenaphthene	0.229	0.020	"	"	"	"	"	"	
Anthracene	0.025	0.020	"	"	"	"	"	"	
Benzo (a) anthracene	0.019	0.005	"	"	"	"	"	"	
Benzo (a) pyrene	ND	0.020	"	"	"	"	"	"	U
Benzo (b) fluoranthene	ND	0.020	"	"	"	"	"	"	U
Benzo (k) fluoranthene	ND	0.020	"	"	"	"	"	"	U
Chrysene	0.036	0.020	"	"	"	"	"	"	
Dibenz (a,h) anthracene	ND	0.020	"	"	"	"	"	"	U
Fluoranthene	ND	0.020	"	"	"	"	"	"	U
Fluorene	0.185	0.020	"	"	"	"	"	"	
Indeno (1,2,3-cd) pyrene	ND	0.020	"	"	"	"	"	"	U

Origins Laboratory, Inc.



The results in this report apply to the samples analyzed in accordance with the chain of custody document. This analytical report must be reproduced in its entirety.

Eagle Environmental Consulting, LLC
 8000 W 44th Ave
 Wheat Ridge CO 80033

Andrew Newberry
 Project Number: [none]
 Project: Noble - Shable USX AB #11-14P

WH-FS-01@8'

11/7/2023 10:06:00AM

Analyte	Result	Min Detection Limit	Reporting Limit	Units	Dilution	Batch	Prepared	Analyzed	Notes
---------	--------	---------------------	-----------------	-------	----------	-------	----------	----------	-------

Origins Laboratory, Inc.
Y311193-05 (Soil)

PAH by EPA 8270E

Pyrene	0.022		0.020	mg/kg	1	B3K0826	11/08/2023	11/15/2023	
--------	-------	--	-------	-------	---	---------	------------	------------	--

Surrogate: Fluorene-d10	101 %		60-130			"	"	"	
Surrogate: Anthracene-d10	105 %		60-130			"	"	"	
Surrogate: Pyrene-d10	84.6 %		60-130			"	"	"	
Surrogate: Benzo (a) pyrene-d12	91.4 %		60-130			"	"	"	

pH in Soil by 9045D

pH	7.98			pH Units	1	B3K0926	11/09/2023	11/10/2023	
----	------	--	--	----------	---	---------	------------	------------	--

SAR by 20B Saturated Paste

SAR	2.72		0.0100	SAR	1	B3K0922	11/09/2023	11/13/2023	
-----	------	--	--------	-----	---	---------	------------	------------	--

Specific Conductance Mod. 9050A

Specific Conductance (EC)	3.50		0.00500	mmhos/cm	1	B3K0926	11/09/2023	11/10/2023	
---------------------------	------	--	---------	----------	---	---------	------------	------------	--

Table 915 metals by EPA 6020B

Arsenic	3.79		0.0909	mg/kg	10	B3K1407	11/14/2023	11/16/2023	
Barium	79.2		9.09	"	"	"	"	"	
Cadmium	0.284		0.0909	"	"	"	"	"	
Copper	14.6		9.09	"	"	"	"	"	

Origins Laboratory, Inc.



The results in this report apply to the samples analyzed in accordance with the chain of custody document. This analytical report must be reproduced in its entirety.

Eagle Environmental Consulting, LLC
 8000 W 44th Ave
 Wheat Ridge CO 80033

Andrew Newberry
 Project Number: [none]
 Project: Noble - Shable USX AB #11-14P

WH-FS-01@8'

11/7/2023 10:06:00AM

Analyte	Result	Min Detection Limit	Reporting Limit	Units	Dilution	Batch	Prepared	Analyzed	Notes
---------	--------	---------------------	-----------------	-------	----------	-------	----------	----------	-------

Origins Laboratory, Inc.
Y311193-05 (Soil)

Table 915 metals by EPA 6020B

Lead	11.2		9.09	mg/kg	10	B3K1407	11/14/2023	11/16/2023	
Nickel	16.5		9.09	"	"	"	"	"	
Selenium	0.137		0.0909	"	"	"	"	"	
Silver	ND		0.0909	"	"	"	"	"	
Zinc	ND		90.9	"	"	"	"	"	

Total Metals by 7196A

Chromium, Hexavalent	ND	0.244	0.5	mg/Kg	1	L716310	11/07/2023	11/14/2023	
----------------------	----	-------	-----	-------	---	---------	------------	------------	--

Origins Laboratory, Inc.



The results in this report apply to the samples analyzed in accordance with the chain of custody document. This analytical report must be reproduced in its entirety.

Eagle Environmental Consulting, LLC
 8000 W 44th Ave
 Wheat Ridge CO 80033

Andrew Newberry
 Project Number: [none]
 Project: Noble - Shable USX AB #11-14P

Volatile Organic Compounds by GC/MS SW846 8260D - Quality Control
Origins Laboratory, Inc.

Analyte	Result	Reporting Limit	Units	Spike Level	Source Result	%REC	%REC Limits	RPD	RPD Limit	Notes
---------	--------	-----------------	-------	-------------	---------------	------	-------------	-----	-----------	-------

Batch B3K0736 - EPA 5030 (soil)

Blank (B3K0736-BLK1)

Prepared: 11/08/2023 Analyzed: 11/09/2023

1,2,4-Trimethylbenzene	ND	0.00200	mg/kg							U
1,3,5-Trimethylbenzene	ND	0.00200	"							U
Benzene	ND	0.00200	"							U
Ethylbenzene	ND	0.00200	"							U
Naphthalene	ND	0.00380	"							U
Toluene	ND	0.00200	"							U
Xylenes, total	ND	0.00200	"							U
Gasoline Range Hydrocarbons	ND	0.200	"							U
Surrogate: 1,2-Dichloroethane-d4	0.12		"	0.125	99.4		70-130			
Surrogate: Toluene-d8	0.12		"	0.125	96.4		70-130			
Surrogate: 4-Bromofluorobenzene	0.12		"	0.125	97.8		70-130			

Origins Laboratory, Inc.



The results in this report apply to the samples analyzed in accordance with the chain of custody document. This analytical report must be reproduced in its entirety.

Eagle Environmental Consulting, LLC
 8000 W 44th Ave
 Wheat Ridge CO 80033

Andrew Newberry
 Project Number: [none]
 Project: Noble - Shable USX AB #11-14P

Volatile Organic Compounds by GC/MS SW846 8260D - Quality Control
Origins Laboratory, Inc.

Analyte	Result	Reporting Limit	Units	Spike Level	Source Result	%REC	%REC Limits	RPD	RPD Limit	Notes
---------	--------	-----------------	-------	-------------	---------------	------	-------------	-----	-----------	-------

Batch B3K0736 - EPA 5030 (soil)

LCS (B3K0736-BS1)

Prepared: 11/08/2023 Analyzed: 11/09/2023

1,2,4-Trimethylbenzene	0.108	0.00200	mg/kg	0.100		108	70-130			
1,3,5-Trimethylbenzene	0.108	0.00200	"	0.100		108	70-130			
Benzene	0.113	0.00200	"	0.100		113	70-130			
Ethylbenzene	0.107	0.00200	"	0.100		107	70-130			
Naphthalene	0.0973	0.00380	"	0.100		97.3	70-130			
Toluene	0.109	0.00200	"	0.100		109	70-130			
o-Xylene	0.107	0.00200	"	0.100		107	70-130			
m,p-Xylene	0.211	0.00400	"	0.200		105	70-130			
Surrogate: 1,2-Dichloroethane-d4	0.12		"	0.125		98.2	70-130			
Surrogate: Toluene-d8	0.12		"	0.125		95.6	70-130			
Surrogate: 4-Bromofluorobenzene	0.13		"	0.125		103	70-130			

Origins Laboratory, Inc.



The results in this report apply to the samples analyzed in accordance with the chain of custody document. This analytical report must be reproduced in its entirety.

Eagle Environmental Consulting, LLC
 8000 W 44th Ave
 Wheat Ridge CO 80033

Andrew Newberry
 Project Number: [none]
 Project: Noble - Shable USX AB #11-14P

Volatile Organic Compounds by GC/MS SW846 8260D - Quality Control
Origins Laboratory, Inc.

Analyte	Result	Reporting Limit	Units	Spike Level	Source Result	%REC	%REC Limits	RPD	RPD Limit	Notes
---------	--------	-----------------	-------	-------------	---------------	------	-------------	-----	-----------	-------

Batch B3K0736 - EPA 5030 (soil)

Matrix Spike (B3K0736-MS1)	Source: Y311165-01			Prepared: 11/08/2023 Analyzed: 11/09/2023						
1,2,4-Trimethylbenzene	0.0889	0.00200	mg/kg	0.100	ND	88.9	70-130			
1,3,5-Trimethylbenzene	0.0893	0.00200	"	0.100	ND	89.3	70-130			
Benzene	0.0948	0.00200	"	0.100	ND	94.8	70-130			
Ethylbenzene	0.0878	0.00200	"	0.100	ND	87.8	70-130			
Naphthalene	0.0813	0.00380	"	0.100	ND	81.3	70-130			
Toluene	0.0917	0.00200	"	0.100	ND	91.7	70-130			
o-Xylene	0.0888	0.00200	"	0.100	ND	88.8	70-130			
m,p-Xylene	0.175	0.00400	"	0.200	ND	87.6	70-130			
Surrogate: 1,2-Dichloroethane-d4	0.13		"	0.125		102	70-130			
Surrogate: Toluene-d8	0.12		"	0.125		95.3	70-130			
Surrogate: 4-Bromofluorobenzene	0.13		"	0.125		103	70-130			

Origins Laboratory, Inc.



The results in this report apply to the samples analyzed in accordance with the chain of custody document. This analytical report must be reproduced in its entirety.

Eagle Environmental Consulting, LLC
 8000 W 44th Ave
 Wheat Ridge CO 80033

Andrew Newberry
 Project Number: [none]
 Project: Noble - Shable USX AB #11-14P

Volatile Organic Compounds by GC/MS SW846 8260D - Quality Control
Origins Laboratory, Inc.

Analyte	Result	Reporting Limit	Units	Spike Level	Source Result	%REC	%REC Limits	RPD	RPD Limit	Notes
---------	--------	-----------------	-------	-------------	---------------	------	-------------	-----	-----------	-------

Batch B3K0736 - EPA 5030 (soil)

Matrix Spike Dup (B3K0736-MSD1)	Source: Y311165-01		Prepared: 11/08/2023 Analyzed: 11/09/2023							
1,2,4-Trimethylbenzene	0.0563	0.00200	mg/kg	0.100	ND	56.3	70-130	44.9	20	QM-07
1,3,5-Trimethylbenzene	0.0558	0.00200	"	0.100	ND	55.8	70-130	46.2	20	QM-07
Benzene	0.0672	0.00200	"	0.100	ND	67.2	70-130	34.1	20	QM-07
Ethylbenzene	0.0583	0.00200	"	0.100	ND	58.3	70-130	40.3	20	QM-07
Naphthalene	0.0550	0.00380	"	0.100	ND	55.0	70-130	38.5	20	QM-07
Toluene	0.0635	0.00200	"	0.100	ND	63.5	70-130	36.4	20	QM-07
o-Xylene	0.0579	0.00200	"	0.100	ND	57.9	70-130	42.2	20	QM-07
m,p-Xylene	0.115	0.00400	"	0.200	ND	57.6	70-130	41.3	20	QM-07
Surrogate: 1,2-Dichloroethane-d4	0.13		"	0.125		106	70-130			
Surrogate: Toluene-d8	0.12		"	0.125		94.4	70-130			
Surrogate: 4-Bromofluorobenzene	0.13		"	0.125		101	70-130			

Origins Laboratory, Inc.



The results in this report apply to the samples analyzed in accordance with the chain of custody document. This analytical report must be reproduced in its entirety.

Eagle Environmental Consulting, LLC
 8000 W 44th Ave
 Wheat Ridge CO 80033

Andrew Newberry
 Project Number: [none]
 Project: Noble - Shable USX AB #11-14P

Volatile Organic Compounds by GC/MS SW846 8260D - Quality Control
Origins Laboratory, Inc.

Analyte	Result	Reporting Limit	Units	Spike Level	Source Result	%REC	%REC Limits	RPD	RPD Limit	Notes
Batch B3K0801 - EPA 3550B										
Blank (B3K0801-BLK1)										
					Prepared: 11/08/2023 Analyzed: 11/10/2023					
Diesel (C10-C28)	ND	25.0	mg/kg							U
Residual Range Organics (C28-C40)	ND	100	"							U
Surrogate: o-Terphenyl	20		"	24.9		79.7	50-150			

Origins Laboratory, Inc.



The results in this report apply to the samples analyzed in accordance with the chain of custody document. This analytical report must be reproduced in its entirety.

Eagle Environmental Consulting, LLC
 8000 W 44th Ave
 Wheat Ridge CO 80033

Andrew Newberry
 Project Number: [none]
 Project: Noble - Shable USX AB #11-14P

Extractable Petroleum Hydrocarbons by 8015D - Quality Control
Origins Laboratory, Inc.

Analyte	Result	Reporting Limit	Units	Spike Level	Source Result	%REC	%REC Limits	RPD	RPD Limit	Notes
---------	--------	-----------------	-------	-------------	---------------	------	-------------	-----	-----------	-------

Batch B3K0801 - EPA 3550B

LCS (B3K0801-BS1)

Prepared: 11/08/2023 Analyzed: 11/10/2023

Diesel (C10-C28)	800	50.0	mg/kg	1000		80.0	70-130			
Residual Range Organics (C28-C40)	826	200	"	1000		82.6	70-130			
Surrogate: o-Terphenyl	39		"	49.8		77.5	50-150			

Origins Laboratory, Inc.



The results in this report apply to the samples analyzed in accordance with the chain of custody document. This analytical report must be reproduced in its entirety.

Eagle Environmental Consulting, LLC
 8000 W 44th Ave
 Wheat Ridge CO 80033

Andrew Newberry
 Project Number: [none]
 Project: Noble - Shable USX AB #11-14P

Extractable Petroleum Hydrocarbons by 8015D - Quality Control
Origins Laboratory, Inc.

Analyte	Result	Reporting Limit	Units	Spike Level	Source Result	%REC	%REC Limits	RPD	RPD Limit	Notes
---------	--------	-----------------	-------	-------------	---------------	------	-------------	-----	-----------	-------

Batch B3K0801 - EPA 3550B

Matrix Spike (B3K0801-MS1)	Source: Y311166-01			Prepared: 11/08/2023 Analyzed: 11/10/2023						
Diesel (C10-C28)	864	50.0	mg/kg	1000	ND	86.4	70-130			
Residual Range Organics (C28-C40)	996	200	"	1000	93.3	90.3	70-130			
Surrogate: o-Terphenyl	40		"	49.8		79.4	50-150			

Origins Laboratory, Inc.



The results in this report apply to the samples analyzed in accordance with the chain of custody document. This analytical report must be reproduced in its entirety.

Eagle Environmental Consulting, LLC
 8000 W 44th Ave
 Wheat Ridge CO 80033

Andrew Newberry
 Project Number: [none]
 Project: Noble - Shable USX AB #11-14P

Extractable Petroleum Hydrocarbons by 8015D - Quality Control
Origins Laboratory, Inc.

Analyte	Result	Reporting Limit	Units	Spike Level	Source Result	%REC	%REC Limits	RPD	RPD Limit	Notes
Batch B3K0801 - EPA 3550B										
Matrix Spike Dup (B3K0801-MSD1)					Source: Y311166-01					Prepared: 11/08/2023 Analyzed: 11/10/2023
Diesel (C10-C28)	867	50.0	mg/kg	1000	ND	86.7	70-130	0.348	35	
Residual Range Organics (C28-C40)	964	200	"	1000	93.3	87.0	70-130	3.29	35	
Surrogate: o-Terphenyl	41		"	49.8		83.1	50-150			

Origins Laboratory, Inc.



The results in this report apply to the samples analyzed in accordance with the chain of custody document. This analytical report must be reproduced in its entirety.

Eagle Environmental Consulting, LLC
 8000 W 44th Ave
 Wheat Ridge CO 80033

Andrew Newberry
 Project Number: [none]
 Project: Noble - Shable USX AB #11-14P

Extractable Petroleum Hydrocarbons by 8015D - Quality Control
Origins Laboratory, Inc.

Analyte	Result	Reporting Limit	Units	Spike Level	Source Result	%REC	%REC Limits	RPD	RPD Limit	Notes
---------	--------	-----------------	-------	-------------	---------------	------	-------------	-----	-----------	-------

Metals by EPA 6000/7000 Series Methods - Quality Control
Origins Laboratory, Inc.

Analyte	Result	Reporting Limit	Units	Spike Level	Source Result	%REC	%REC Limits	RPD	RPD Limit	Notes
---------	--------	-----------------	-------	-------------	---------------	------	-------------	-----	-----------	-------

Batch B3K0804 - EPA 3050B

Blank (B3K0804-BLK1)

Prepared: 11/08/2023 Analyzed: 11/10/2023

Arsenic	ND	0.000100	mg/kg							
Barium	ND	0.0100	"							
Cadmium	ND	0.000100	"							
Copper	ND	0.0100	"							
Lead	ND	0.0100	"							
Nickel	ND	0.0100	"							
Selenium	ND	0.000100	"							
Silver	ND	0.000100	"							
Zinc	ND	0.100	"							

LCS (B3K0804-BS1)

Prepared: 11/08/2023 Analyzed: 11/10/2023

Arsenic	0.0495	0.000100	mg/kg	0.0500		98.9	80-120			
Barium	4.81	0.0100	"	5.00		96.2	80-120			
Cadmium	0.0486	0.000100	"	0.0500		97.2	80-120			
Copper	0.522	0.0100	"	0.500		104	80-120			
Lead	0.0487	0.0100	"	0.0500		97.4	80-120			
Nickel	0.0519	0.0100	"	0.0500		104	80-120			
Selenium	0.0463	0.000100	"	0.0500		92.5	80-120			
Silver	0.0445	0.000100	"	0.0500		89.1	80-120			
Zinc	0.504	0.100	"	0.500		101	80-120			

Matrix Spike (B3K0804-MS1)

Source: Y311141-29

Prepared: 11/08/2023 Analyzed: 11/10/2023

Origins Laboratory, Inc.



The results in this report apply to the samples analyzed in accordance with the chain of custody document. This analytical report must be reproduced in its entirety.

Eagle Environmental Consulting, LLC
 8000 W 44th Ave
 Wheat Ridge CO 80033

Andrew Newberry
 Project Number: [none]
 Project: Noble - Shable USX AB #11-14P

Metals by EPA 6000/7000 Series Methods - Quality Control
Origins Laboratory, Inc.

Analyte	Result	Reporting Limit	Units	Spike Level	Source Result	%REC	%REC Limits	RPD	RPD Limit	Notes
---------	--------	-----------------	-------	-------------	---------------	------	-------------	-----	-----------	-------

Batch B3K0804 - EPA 3050B

Matrix Spike (B3K0804-MS1)

Source: Y311141-29

Prepared: 11/08/2023 Analyzed: 11/10/2023

Arsenic	6.92	0.0984	mg/kg	4.92	1.99	100	75-125			
Barium	639	9.84	"	492	177	93.9	75-125			
Cadmium	5.48	0.0984	"	4.92	0.162	108	75-125			
Copper	65.6	9.84	"	49.2	10.4	112	75-125			
Lead	11.1	9.84	"	4.92	5.26	118	75-125			
Nickel	15.3	9.84	"	4.92	10.1	106	75-125			
Selenium	5.15	0.0984	"	4.92	0.137	102	75-125			
Silver	4.91	0.0984	"	4.92	0.0180	99.4	75-125			
Zinc	93.6	98.4	"	49.2	33.9	121	75-125			

Matrix Spike Dup (B3K0804-MSD1)

Source: Y311141-29

Prepared: 11/08/2023 Analyzed: 11/10/2023

Arsenic	6.31	0.0900	mg/kg	4.50	1.99	96.1	75-125	9.25	20	
Barium	550	9.00	"	450	177	83.0	75-125	14.9	20	
Cadmium	4.68	0.0900	"	4.50	0.162	100	75-125	15.7	20	
Copper	57.8	9.00	"	45.0	10.4	105	75-125	12.6	20	
Lead	9.80	9.00	"	4.50	5.26	101	75-125	12.2	20	
Nickel	13.9	9.00	"	4.50	10.1	84.7	75-125	9.67	20	
Selenium	4.48	0.0900	"	4.50	0.137	96.5	75-125	14.0	20	
Silver	4.21	0.0900	"	4.50	0.0180	93.2	75-125	15.3	20	
Zinc	85.7	90.0	"	45.0	33.9	115	75-125	8.80	20	

Batch B3K1407 - EPA 3050B

Blank (B3K1407-BLK1)

Prepared: 11/14/2023 Analyzed: 11/16/2023

Arsenic	ND	0.000100	mg/kg							
Barium	ND	0.0100	"							
Cadmium	ND	0.000100	"							

Origins Laboratory, Inc.



The results in this report apply to the samples analyzed in accordance with the chain of custody document. This analytical report must be reproduced in its entirety.

Eagle Environmental Consulting, LLC
 8000 W 44th Ave
 Wheat Ridge CO 80033

Andrew Newberry
 Project Number: [none]
 Project: Noble - Shable USX AB #11-14P

Metals by EPA 6000/7000 Series Methods - Quality Control
Origins Laboratory, Inc.

Analyte	Result	Reporting Limit	Units	Spike Level	Source Result	%REC	%REC Limits	RPD	RPD Limit	Notes
---------	--------	-----------------	-------	-------------	---------------	------	-------------	-----	-----------	-------

Batch B3K1407 - EPA 3050B

Blank (B3K1407-BLK1)

Prepared: 11/14/2023 Analyzed: 11/16/2023

Copper	ND	0.0100	mg/kg							
Lead	ND	0.0100	"							
Nickel	ND	0.0100	"							
Selenium	ND	0.000100	"							
Silver	ND	0.000100	"							
Zinc	ND	0.100	"							

LCS (B3K1407-BS1)

Prepared: 11/14/2023 Analyzed: 11/16/2023

Arsenic	0.0517	0.000100	mg/kg	0.0500		103	80-120			
Barium	5.08	0.0100	"	5.00		102	80-120			
Cadmium	0.0536	0.000100	"	0.0500		107	80-120			
Copper	0.520	0.0100	"	0.500		104	80-120			
Lead	0.0522	0.0100	"	0.0500		104	80-120			
Nickel	0.0526	0.0100	"	0.0500		105	80-120			
Selenium	0.0502	0.000100	"	0.0500		100	80-120			
Silver	0.0535	0.000100	"	0.0500		107	80-120			
Zinc	0.463	0.100	"	0.500		92.6	80-120			

Matrix Spike (B3K1407-MS1)

Source: Y311193-02

Prepared: 11/14/2023 Analyzed: 11/16/2023

Arsenic	7.95	0.0850	mg/kg	4.25	3.05	115	75-125			
Barium	569	8.50	"	425	163	95.5	75-125			
Cadmium	4.29	0.0850	"	4.25	0.175	96.9	75-125			
Copper	50.2	8.50	"	42.5	12.9	87.7	75-125			
Lead	15.1	8.50	"	4.25	11.1	92.6	75-125			
Nickel	17.6	8.50	"	4.25	10.4	169	75-125			QM-07
Selenium	3.48	0.0850	"	4.25	0.218	76.8	75-125			
Silver	3.99	0.0850	"	4.25	0.0381	92.9	75-125			

Origins Laboratory, Inc.



The results in this report apply to the samples analyzed in accordance with the chain of custody document. This analytical report must be reproduced in its entirety.

Eagle Environmental Consulting, LLC
 8000 W 44th Ave
 Wheat Ridge CO 80033

Andrew Newberry
 Project Number: [none]
 Project: Noble - Shable USX AB #11-14P

Metals by EPA 6000/7000 Series Methods - Quality Control
Origins Laboratory, Inc.

Analyte	Result	Reporting Limit	Units	Spike Level	Source Result	%REC	%REC Limits	RPD	RPD Limit	Notes
Batch B3K1407 - EPA 3050B										
Matrix Spike (B3K1407-MS1)		Source: Y311193-02			Prepared: 11/14/2023 Analyzed: 11/16/2023					
Zinc	103	85.0	mg/kg	42.5	51.0	121	75-125			
Matrix Spike Dup (B3K1407-MSD1)		Source: Y311193-02			Prepared: 11/14/2023 Analyzed: 11/16/2023					
Arsenic	7.20	0.0851	mg/kg	4.25	3.05	97.6	75-125	9.87	20	
Barium	517	8.51	"	425	163	83.1	75-125	9.67	20	
Cadmium	4.36	0.0851	"	4.25	0.175	98.3	75-125	1.48	20	
Copper	48.8	8.51	"	42.5	12.9	84.2	75-125	2.89	20	
Lead	15.5	8.51	"	4.25	11.1	102	75-125	2.73	20	
Nickel	18.5	8.51	"	4.25	10.4	189	75-125	4.94	20	QM-07
Selenium	3.82	0.0851	"	4.25	0.218	84.7	75-125	9.23	20	
Silver	4.01	0.0851	"	4.25	0.0381	93.5	75-125	0.655	20	
Zinc	94.2	85.1	"	42.5	51.0	102	75-125	8.47	20	

Origins Laboratory, Inc.



The results in this report apply to the samples analyzed in accordance with the chain of custody document. This analytical report must be reproduced in its entirety.

Eagle Environmental Consulting, LLC
 8000 W 44th Ave
 Wheat Ridge CO 80033

Andrew Newberry
 Project Number: [none]
 Project: Noble - Shable USX AB #11-14P

EPA 8270E (SW846) - Semivolatile Organic Compounds - Quality Control
Origins Laboratory, Inc.

Analyte	Result	Reporting Limit	Units	Spike Level	Source Result	%REC	%REC Limits	RPD	RPD Limit	Notes
---------	--------	-----------------	-------	-------------	---------------	------	-------------	-----	-----------	-------

Batch B3K0826 - EPA 3580

Blank (B3K0826-BLK1)

Prepared: 11/08/2023 Analyzed: 11/15/2023

1-Methylnaphthalene	ND	0.002	mg/kg							U
2-Methylnaphthalene	ND	0.002	"							U
Acenaphthene	ND	0.020	"							U
Anthracene	ND	0.020	"							U
Benzo (a) anthracene	ND	0.005	"							U
Benzo (a) pyrene	ND	0.020	"							U
Benzo (b) fluoranthene	ND	0.020	"							U
Benzo (g,h,i) perylene	ND	0.020	"							U
Benzo (k) fluoranthene	ND	0.020	"							U
Chrysene	ND	0.020	"							U
Dibenz (a,h) anthracene	ND	0.020	"							U
Fluoranthene	ND	0.020	"							U
Fluorene	ND	0.020	"							U
Indeno (1,2,3-cd) pyrene	ND	0.020	"							U
Naphthalene	ND	0.002	"							U
Phenanthrene	ND	0.020	"							U
Pyrene	ND	0.020	"							U
Surrogate: Fluorene-d10	190		ug/kg	200		96.7	60-130			
Surrogate: Anthracene-d10	180		"	200		91.3	60-130			
Surrogate: Pyrene-d10	200		"	200		98.2	60-130			
Surrogate: Benzo (a) pyrene-d12	190		"	200		94.1	60-130			

LCS (B3K0826-BS1)

Prepared: 11/08/2023 Analyzed: 11/15/2023

1-Methylnaphthalene	0.206	0.002	mg/kg	0.200		103	70-130			
2-Methylnaphthalene	0.198	0.002	"	0.200		99.1	70-130			
Acenaphthene	0.200	0.020	"	0.200		100	70-130			
Anthracene	0.209	0.020	"	0.200		105	70-130			

Origins Laboratory, Inc.



The results in this report apply to the samples analyzed in accordance with the chain of custody document. This analytical report must be reproduced in its entirety.

Eagle Environmental Consulting, LLC
 8000 W 44th Ave
 Wheat Ridge CO 80033

Andrew Newberry
 Project Number: [none]
 Project: Noble - Shable USX AB #11-14P

EPA 8270E (SW846) - Semivolatile Organic Compounds - Quality Control
Origins Laboratory, Inc.

Analyte	Result	Reporting Limit	Units	Spike Level	Source Result	%REC	%REC Limits	RPD	RPD Limit	Notes
---------	--------	-----------------	-------	-------------	---------------	------	-------------	-----	-----------	-------

Batch B3K0826 - EPA 3580

LCS (B3K0826-BS1)

Prepared: 11/08/2023 Analyzed: 11/15/2023

Benzo (a) anthracene	0.173	0.005	mg/kg	0.200		86.6	70-130			
Benzo (a) pyrene	0.195	0.020	"	0.200		97.4	70-130			
Benzo (b) fluoranthene	0.165	0.020	"	0.200		82.6	70-130			
Benzo (g,h,i) perylene	0.200	0.020	"	0.200		99.9	70-130			
Benzo (k) fluoranthene	0.198	0.020	"	0.200		99.0	70-130			
Chrysene	0.198	0.020	"	0.200		98.9	70-130			
Dibenz (a,h) anthracene	0.185	0.020	"	0.200		92.4	70-130			
Fluoranthene	0.207	0.020	"	0.200		103	70-130			
Fluorene	0.198	0.020	"	0.200		99.2	70-130			
Indeno (1,2,3-cd) pyrene	0.222	0.020	"	0.200		111	70-130			
Naphthalene	0.203	0.002	"	0.200		101	70-130			
Phenanthrene	0.198	0.020	"	0.200		98.8	70-130			
Pyrene	0.191	0.020	"	0.200		95.7	70-130			
Surrogate: Fluorene-d10	200		ug/kg	200		99.4	60-130			
Surrogate: Anthracene-d10	180		"	200		89.2	60-130			
Surrogate: Pyrene-d10	200		"	200		98.4	60-130			
Surrogate: Benzo (a) pyrene-d12	190		"	200		95.1	60-130			

Matrix Spike (B3K0826-MS1)

Source: Y311147-01

Prepared: 11/08/2023 Analyzed: 11/15/2023

1-Methylnaphthalene	0.221	0.002	mg/kg	0.200	ND	110	70-130			
2-Methylnaphthalene	0.214	0.002	"	0.200	ND	107	70-130			
Acenaphthene	0.217	0.020	"	0.200	ND	109	70-130			
Anthracene	0.176	0.020	"	0.200	0.001	87.5	70-130			
Benzo (a) anthracene	0.199	0.005	"	0.200	0.003	98.0	70-130			
Benzo (a) pyrene	0.217	0.020	"	0.200	0.004	107	70-130			
Benzo (b) fluoranthene	0.202	0.020	"	0.200	0.003	99.3	70-130			
Benzo (g,h,i) perylene	0.220	0.020	"	0.200	0.003	109	70-130			

Origins Laboratory, Inc.



The results in this report apply to the samples analyzed in accordance with the chain of custody document. This analytical report must be reproduced in its entirety.

Eagle Environmental Consulting, LLC
 8000 W 44th Ave
 Wheat Ridge CO 80033

Andrew Newberry
 Project Number: [none]
 Project: Noble - Shable USX AB #11-14P

EPA 8270E (SW846) - Semivolatile Organic Compounds - Quality Control
Origins Laboratory, Inc.

Analyte	Result	Reporting Limit	Units	Spike Level	Source Result	%REC	%REC Limits	RPD	RPD Limit	Notes
---------	--------	-----------------	-------	-------------	---------------	------	-------------	-----	-----------	-------

Batch B3K0826 - EPA 3580

Matrix Spike (B3K0826-MS1)		Source: Y311147-01			Prepared: 11/08/2023 Analyzed: 11/15/2023					
Benzo (k) fluoranthene	0.238	0.020	mg/kg	0.200	0.001	118	70-130			
Chrysene	0.227	0.020	"	0.200	0.003	112	70-130			
Dibenz (a,h) anthracene	0.203	0.020	"	0.200	0.001	101	70-130			
Fluoranthene	0.246	0.020	"	0.200	0.006	120	70-130			
Fluorene	0.216	0.020	"	0.200	ND	108	70-130			
Indeno (1,2,3-cd) pyrene	0.210	0.020	"	0.200	ND	105	70-130			
Naphthalene	0.226	0.002	"	0.200	ND	113	70-130			
Phenanthrene	0.215	0.020	"	0.200	0.004	106	70-130			
Pyrene	0.220	0.020	"	0.200	0.003	109	70-130			
Surrogate: Fluorene-d10	200		ug/kg	200		99.8	60-130			
Surrogate: Anthracene-d10	180		"	200		92.0	60-130			
Surrogate: Pyrene-d10	200		"	200		102	60-130			
Surrogate: Benzo (a) pyrene-d12	200		"	200		99.0	60-130			

Matrix Spike Dup (B3K0826-MSD1)		Source: Y311147-01			Prepared: 11/08/2023 Analyzed: 11/15/2023					
1-Methylnaphthalene	0.251	0.002	mg/kg	0.200	ND	126	70-130	12.8	20	
2-Methylnaphthalene	0.239	0.002	"	0.200	ND	119	70-130	11.2	20	
Acenaphthene	0.238	0.020	"	0.200	ND	119	70-130	9.08	20	
Anthracene	0.236	0.020	"	0.200	0.001	117	70-130	29.1	20	QM-07
Benzo (a) anthracene	0.225	0.005	"	0.200	0.003	111	70-130	12.4	20	
Benzo (a) pyrene	0.237	0.020	"	0.200	0.004	116	70-130	8.76	20	
Benzo (b) fluoranthene	0.194	0.020	"	0.200	0.003	95.4	70-130	3.95	20	
Benzo (g,h,i) perylene	0.234	0.020	"	0.200	0.003	116	70-130	6.22	20	
Benzo (k) fluoranthene	0.239	0.020	"	0.200	0.001	119	70-130	0.522	20	
Chrysene	0.219	0.020	"	0.200	0.003	108	70-130	3.66	20	
Dibenz (a,h) anthracene	0.222	0.020	"	0.200	0.001	110	70-130	8.78	20	
Fluoranthene	0.251	0.020	"	0.200	0.006	123	70-130	1.89	20	

Origins Laboratory, Inc.



The results in this report apply to the samples analyzed in accordance with the chain of custody document. This analytical report must be reproduced in its entirety.

Eagle Environmental Consulting, LLC
 8000 W 44th Ave
 Wheat Ridge CO 80033

Andrew Newberry
 Project Number: [none]
 Project: Noble - Shable USX AB #11-14P

EPA 8270E (SW846) - Semivolatile Organic Compounds - Quality Control
Origins Laboratory, Inc.

Analyte	Result	Reporting Limit	Units	Spike Level	Source Result	%REC	%REC Limits	RPD	RPD Limit	Notes
---------	--------	-----------------	-------	-------------	---------------	------	-------------	-----	-----------	-------

Batch B3K0826 - EPA 3580

Matrix Spike Dup (B3K0826-MSD1)	Source: Y311147-01			Prepared: 11/08/2023 Analyzed: 11/15/2023						
Fluorene	0.232	0.020	mg/kg	0.200	ND	116	70-130	7.51	20	
Indeno (1,2,3-cd) pyrene	0.266	0.020	"	0.200	ND	133	70-130	23.6	20	QM-07
Naphthalene	0.245	0.002	"	0.200	ND	122	70-130	7.67	20	
Phenanthrene	0.224	0.020	"	0.200	0.004	110	70-130	4.14	20	
Pyrene	0.233	0.020	"	0.200	0.003	115	70-130	5.58	20	
Surrogate: Fluorene-d10	200		ug/kg	200		98.2	60-130			
Surrogate: Anthracene-d10	200		"	200		101	60-130			
Surrogate: Pyrene-d10	200		"	200		100	60-130			
Surrogate: Benzo (a) pyrene-d12	200		"	200		98.2	60-130			

Origins Laboratory, Inc.



The results in this report apply to the samples analyzed in accordance with the chain of custody document. This analytical report must be reproduced in its entirety.

Eagle Environmental Consulting, LLC
 8000 W 44th Ave
 Wheat Ridge CO 80033

Andrew Newberry
 Project Number: [none]
 Project: Noble - Shable USX AB #11-14P

Classical Chemistry Parameters - Quality Control
Origins Laboratory, Inc.

Analyte	Result	Reporting Limit	Units	Spike Level	Source Result	%REC	%REC Limits	RPD	RPD Limit	Notes
---------	--------	-----------------	-------	-------------	---------------	------	-------------	-----	-----------	-------

Batch B3K0917 - DTPA Sorbitol Preparation

Blank (B3K0917-BLK1)

Prepared: 11/09/2023 Analyzed: 11/10/2023

Boron ND 0.100 mg/L

Duplicate (B3K0917-DUP1)

Source: Y311193-01

Prepared: 11/09/2023 Analyzed: 11/10/2023

Boron 0.778 0.0998 mg/L 0.716 8.22 50

Batch B3K0921 - Saturated Paste Metals

Blank (B3K0921-BLK1)

Prepared: 11/09/2023 Analyzed: 11/13/2023

SAR ND 0.0100 SAR

Calcium PPM ND 10.0 mg/L

Magnesium PPM ND 10.0 "

Sodium PPM ND 10.0 "

Duplicate (B3K0921-DUP1)

Source: Y311193-01

Prepared: 11/09/2023 Analyzed: 11/13/2023

Calcium PPM 189 10.0 mg/L 129 37.6 50

SAR ND 0.0100 SAR 2.47 200

Magnesium PPM 70.2 10.0 mg/L 53.4 27.3 50

Sodium PPM 152 10.0 " 132 14.3 50

Batch B3K0922 - Saturated Paste Metals

Blank (B3K0922-BLK1)

Prepared: 11/09/2023 Analyzed: 11/13/2023

Calcium PPM ND 10.0 mg/L

SAR ND 0.0100 SAR

Magnesium PPM ND 10.0 mg/L

Sodium PPM ND 10.0 "

Origins Laboratory, Inc.



The results in this report apply to the samples analyzed in accordance with the chain of custody document. This analytical report must be reproduced in its entirety.

Eagle Environmental Consulting, LLC
 8000 W 44th Ave
 Wheat Ridge CO 80033

Andrew Newberry
 Project Number: [none]
 Project: Noble - Shable USX AB #11-14P

Classical Chemistry Parameters - Quality Control
Origins Laboratory, Inc.

Analyte	Result	Reporting Limit	Units	Spike Level	Source Result	%REC	%REC Limits	RPD	RPD Limit	Notes
---------	--------	-----------------	-------	-------------	---------------	------	-------------	-----	-----------	-------

Batch B3K0922 - Saturated Paste Metals

Duplicate (B3K0922-DUP1)	Source: Y311193-04			Prepared: 11/09/2023 Analyzed: 11/13/2023						
Calcium PPM	30.3	10.0	mg/L		33.4			9.71	50	
SAR	ND	0.0100	SAR		0.227				200	
Magnesium PPM	8.99	10.0	mg/L		9.95			10.1	50	
Sodium PPM	4.82	10.0	"		5.82			18.8	50	

Origins Laboratory, Inc.



The results in this report apply to the samples analyzed in accordance with the chain of custody document. This analytical report must be reproduced in its entirety.

Eagle Environmental Consulting, LLC
 8000 W 44th Ave
 Wheat Ridge CO 80033

Andrew Newberry
 Project Number: [none]
 Project: Noble - Shable USX AB #11-14P

Saturated Paste - Quality Control
Origins Laboratory, Inc.

Analyte	Result	Reporting Limit	Units	Spike Level	Source Result	%REC	%REC Limits	RPD	RPD Limit	Notes
---------	--------	-----------------	-------	-------------	---------------	------	-------------	-----	-----------	-------

Batch B3K0925 - Saturated Paste pH/EC

Blank (B3K0925-BLK1)

Prepared: 11/09/2023 Analyzed: 11/10/2023

Specific Conductance (EC) ND 0.00500 mmhos/cm

Duplicate (B3K0925-DUP1)

Source: Y311193-01

Prepared: 11/09/2023 Analyzed: 11/10/2023

pH 8.22 pH Units 8.23 0.122 25

Specific Conductance (EC) 1.99 0.00500 mmhos/cm 1.64 19.5 25

Batch B3K0926 - Saturated Paste pH/EC

Blank (B3K0926-BLK1)

Prepared: 11/09/2023 Analyzed: 11/10/2023

Specific Conductance (EC) ND 0.00500 mmhos/cm

Duplicate (B3K0926-DUP1)

Source: Y311193-04

Prepared: 11/09/2023 Analyzed: 11/10/2023

pH 8.30 pH Units 8.33 0.361 25

Specific Conductance (EC) 0.396 0.00500 mmhos/cm 0.436 9.66 25

Origins Laboratory, Inc.



The results in this report apply to the samples analyzed in accordance with the chain of custody document. This analytical report must be reproduced in its entirety.

Eagle Environmental Consulting, LLC
 8000 W 44th Ave
 Wheat Ridge CO 80033

Andrew Newberry
 Project Number: [none]
 Project: Noble - Shable USX AB #11-14P

Total Metals by 7196A - Quality Control
Waypoint Analytical, LLC.

Analyte	Result	Reporting Limit	Units	Spike Level	Source Result	%REC	%REC Limits	RPD	RPD Limit	Notes
Batch L716310 -										
DUP (L 89269-DUP)		Source: 89269			Prepared: Analyzed: 11/14/2023					
Chromium, Hexavalent	ND	0.5	mg/Kg		<0.500		-	0	20	
MS (L 89269-MS)		Source: 89269			Prepared: Analyzed: 11/14/2023					
Chromium, Hexavalent	36.8	2.5	mg/Kg	39.2	<1.22	94	75-125			
LCS (LCS)		Prepared: Analyzed: 11/14/2023								
Chromium, Hexavalent	6.84	0.5	mg/Kg	8		86	75-125			
LRB (LRB)		Prepared: Analyzed: 11/14/2023								
Chromium, Hexavalent	ND	0.5	mg/Kg				-			

Origins Laboratory, Inc.



The results in this report apply to the samples analyzed in accordance with the chain of custody document. This analytical report must be reproduced in its entirety.

Eagle Environmental Consulting, LLC
 8000 W 44th Ave
 Wheat Ridge CO 80033

Andrew Newberry
 Project Number: [none]
 Project: Noble - Shable USX AB #11-14P

Total Metals by 7196A - Quality Control
Waypoint Analytical, LLC.

Analyte	Result	Reporting Limit	Units	Spike Level	Source Result	%REC	%REC Limits	RPD	RPD Limit	Notes
Batch L716308 -										
DUP (L 89267-DUP)		Source: Y311193-04			Prepared: Analyzed: 11/10/2023					
Chromium, Hexavalent	ND	0.5	mg/Kg		<0.500		-	0	20	
MS (L 89267-MS)		Source: Y311193-04			Prepared: Analyzed: 11/10/2023					
Chromium, Hexavalent	29.7	2.5	mg/Kg	39.9	<1.22	74	75-125			*
LCS (LCS)		Prepared: Analyzed: 11/10/2023								
Chromium, Hexavalent	7.27	0.5	mg/Kg	8		91	75-125			
LRB (LRB)		Prepared: Analyzed: 11/10/2023								
Chromium, Hexavalent	ND	0.5	mg/Kg				-			

Origins Laboratory, Inc.



The results in this report apply to the samples analyzed in accordance with the chain of custody document. This analytical report must be reproduced in its entirety.

Eagle Environmental Consulting, LLC
8000 W 44th Ave
Wheat Ridge CO 80033

Andrew Newberry
Project Number: [none]
Project: Noble - Shable USX AB #11-14P

Notes and Definitions

U Sample is Non-Detect.

S-04 The surrogate recovery for this sample is outside of established control limits due to a sample matrix effect.

QM-07 The spike recovery was outside acceptance limits for the MS and/or MSD. The batch was accepted based on acceptable LCS recovery.

* QC Failure

ND Analyte NOT DETECTED at or above the reporting limit

RPD Relative Percent Difference

All soil results are reported on a wet weight basis.

Calculated results may use J-flag data (instead of reported "ND") as part of calculation to provide a more accurate result.

Origins Laboratory, Inc.



The results in this report apply to the samples analyzed in accordance with the chain of custody document. This analytical report must be reproduced in its entirety.

Jordan A. Bynon, Project Manager

December 26, 2023

Eagle Environmental Consulting, LLC

Andrew Newberry

8000 W 44th Ave

Wheat Ridge CO 80033

Project Name - Noble - Shable USX AB #11-14P Project Number - [none]

Attached are your analytical results for Noble - Shable USX AB #11-14P received by Origins Laboratory, Inc. December 04, 2023. This project is associated with Origins project number Y312097-01.

The analytical results in the following report were analyzed under the guidelines of EPA Methods. These methods are identified as follows; "SW" are defined in SW-846, "EPA" are defined in 40CFR part 136 and "SM" are defined in the most current revision of Standard Methods For the Examination of Water and Wastewater.

The analytical results apply specifically to the samples and analyses specified per the attached Chain of Custody. As such, this report shall not be reproduced except in full, without the written approval of Origin's laboratory.

Unless otherwise noted, the analytical results for all soil samples are reported on a wet weight basis. All analytical analyses were performed under NELAP guidelines unless noted by a data qualifier.

Any holding time exceedances, deviations from the method specifications or deviations from Origins Laboratory's Standard Operating Procedures are outlined in the case narrative.

Thank you for selecting Origins for your analytical needs. Please contact us with any questions concerning this report, or if we can help with anything at all.

Origins Laboratory, Inc.
303.433.1322
o-squad@oelabinc.com



Eagle Environmental Consulting, LLC
8000 W 44th Ave
Wheat Ridge CO 80033

Andrew Newberry
Project Number: [none]
Project: Noble - Shable USX AB #11-14P

CROSS REFERENCE REPORT

Sample ID	Laboratory ID	Matrix	Date Sampled	Date Received
Background-01@2'	Y312097-01	Soil	November 7, 2023 10:08	12/04/2023 16:30

Origins Laboratory, Inc.



The results in this report apply to the samples analyzed in accordance with the chain of custody document. This analytical report must be reproduced in its entirety.

Eagle Environmental Consulting, LLC
 8000 W 44th Ave
 Wheat Ridge CO 80033

Andrew Newberry
 Project Number: [none]
 Project: Noble - Shable USX AB #11-14P

Origins Laboratory

F-012207-01-R1
 Effective Date: 01/09/12

Sample Receipt Checklist

Origins Work Order: 4812097 Client: Eagle
 Client Project ID: Shable USX AB 11-14P
 Checklist Completed by: CHS Shipped Via: HD
 Date/time completed: 12/4/23 (UPS, FedEx, Hand Delivered, Pick-up, etc.)
 Airbill #: N/A
 Matrix(s) Received: (Check all that apply): Soil/Solid Water Other: _____
 Cooler Number/Temperature: 116 °C _____ °C _____ °C (Describe)
 Thermometer ID: 7004

Requirement Description	Yes	No	N/A	Comments (if any)
If samples require cooling, was the temperature between 0°C to ≤ 6°C ⁽¹⁾ ?	<input checked="" type="checkbox"/>			
Is there ice present (document if blue ice is used)	<input checked="" type="checkbox"/>			
Are custody seals present on cooler? (if so, document in comments if they are signed and dated, broken or intact)		<input checked="" type="checkbox"/>		
Are custody seals present on each sample container? (if so, document in comments if they are signed and dated, broken or intact)		<input checked="" type="checkbox"/>		
Were all samples received intact ⁽¹⁾ ?	<input checked="" type="checkbox"/>			
Was adequate sample volume provided ⁽¹⁾ ?	<input checked="" type="checkbox"/>			
Are short holding time analytes or samples with HTs due within 48 hours present ⁽¹⁾ ?		<input checked="" type="checkbox"/>		
Is a chain-of-custody (COC) present and filled out completely ⁽¹⁾ ?	<input checked="" type="checkbox"/>			
Does the COC agree with the number and type of sample bottles received ⁽¹⁾ ?	<input checked="" type="checkbox"/>			
Do the sample IDs on the bottle labels match the COC ⁽¹⁾ ?	<input checked="" type="checkbox"/>			
Is the COC properly relinquished by the client with date and time recorded ⁽¹⁾ ?	<input checked="" type="checkbox"/>			
For volatiles in water – is there headspace (> ¼ inch bubble) present? If yes, contact client and note in narrative.			<input checked="" type="checkbox"/>	
Are samples preserved that require preservation and was it checked ⁽¹⁾ ? (note ID of confirmation instrument used in comments) / (preservation is not confirmed for subcontracted analyses in order to insure sample integrity)/(pH <2 for samples preserved with HNO ₃ , HCL, H ₂ SO ₄) / (pH >10 for samples preserved with NaAsO ₂ +NaOH, ZnAc+NaOH)			<input checked="" type="checkbox"/>	
Additional Comments (if any):				

⁽¹⁾If NO, then contact the client before proceeding with analysis and note date/time and person contacted as well as the corrective action to in the additional comments (above) and the case narrative.

Reviewed by JB Project Manager

Date/Time Reviewed 12-23

Origins Laboratory, Inc.

J. Bynon

The results in this report apply to the samples analyzed in accordance with the chain of custody document. This analytical report must be reproduced in its entirety.

Eagle Environmental Consulting, LLC
 8000 W 44th Ave
 Wheat Ridge CO 80033

Andrew Newberry
 Project Number: [none]
 Project: Noble - Shable USX AB #11-14P

Background-01@2'
11/7/2023 10:08:00AM

Analyte	Result	Min Detection Limit	Reporting Limit	Units	Dilution	Batch	Prepared	Analyzed	Notes
---------	--------	---------------------	-----------------	-------	----------	-------	----------	----------	-------

Origins Laboratory, Inc.
Y312097-01 (Soil)

Metals by Saturated Paste by EPA 6010

Calcium	23.1		0.499	meq/L	10	[CALC]	12/06/2023	12/07/2023	
Magnesium	16.6		0.823	"	"	"	"	"	
Sodium	17.6		0.435	"	"	"	"	"	

pH in Soil by 9045D

pH	8.02			pH Units	1	B3L0616	12/06/2023	12/07/2023	
----	------	--	--	----------	---	---------	------------	------------	--

SAR by 20B Saturated Paste

SAR	3.96		0.0100	SAR	1	B3L0607	12/06/2023	12/07/2023	
-----	------	--	--------	-----	---	---------	------------	------------	--

Specific Conductance Mod. 9050A

Specific Conductance (EC)	4.06		0.00500	mmhos/cm	1	B3L0616	12/06/2023	12/07/2023	
---------------------------	------	--	---------	----------	---	---------	------------	------------	--

Total Metals by 6020B

Arsenic	3.91	0.0855	0.25	mg/Kg	5	L721239	12/07/2023	12/21/2023	
Barium	168	0.042	0.25	"	"	"	"	"	
Cadmium	0.427	0.026	0.25	"	"	"	"	"	
Lead	13.9	0.031	0.25	"	"	"	"	"	
Selenium	1.27	0.103	0.25	"	"	"	"	"	

Origins Laboratory, Inc.



The results in this report apply to the samples analyzed in accordance with the chain of custody document. This analytical report must be reproduced in its entirety.

Eagle Environmental Consulting, LLC
 8000 W 44th Ave
 Wheat Ridge CO 80033

Andrew Newberry
 Project Number: [none]
 Project: Noble - Shable USX AB #11-14P

Classical Chemistry Parameters - Quality Control
Origins Laboratory, Inc.

Analyte	Result	Reporting Limit	Units	Spike Level	Source Result	%REC	%REC Limits	RPD	RPD Limit	Notes
---------	--------	-----------------	-------	-------------	---------------	------	-------------	-----	-----------	-------

Batch B3L0607 - Saturated Paste Metals

Blank (B3L0607-BLK1)

Prepared: 12/06/2023 Analyzed: 12/07/2023

SAR	ND	0.0100	SAR							
Calcium PPM	ND	10.0	mg/L							
Magnesium PPM	ND	10.0	"							
Sodium PPM	ND	10.0	"							

Duplicate (B3L0607-DUP1)

Source: Y312096-01

Prepared: 12/06/2023 Analyzed: 12/07/2023

Calcium PPM	89.7	10.0	mg/L		88.7			1.12	50	
SAR	ND	0.0100	SAR		4.55				200	
Magnesium PPM	20.4	10.0	mg/L		20.4			0.0491	50	
Sodium PPM	174	10.0	"		183			4.93	50	

Origins Laboratory, Inc.



The results in this report apply to the samples analyzed in accordance with the chain of custody document. This analytical report must be reproduced in its entirety.

Eagle Environmental Consulting, LLC
 8000 W 44th Ave
 Wheat Ridge CO 80033

Andrew Newberry
 Project Number: [none]
 Project: Noble - Shable USX AB #11-14P

Saturated Paste - Quality Control
Origins Laboratory, Inc.

Analyte	Result	Reporting Limit	Units	Spike Level	Source Result	%REC	%REC Limits	RPD	RPD Limit	Notes
Batch B3L0616 - Saturated Paste pH/EC										
Blank (B3L0616-BLK1)					Prepared: 12/06/2023 Analyzed: 12/07/2023					
Specific Conductance (EC)	ND	0.00500	mmhos/cm							
Duplicate (B3L0616-DUP1)					Source: Y312096-01 Prepared: 12/06/2023 Analyzed: 12/07/2023					
pH	7.70		pH Units		7.77		0.905	25		
Specific Conductance (EC)	1.45	0.00500	mmhos/cm		1.46		1.02	25		

Origins Laboratory, Inc.



The results in this report apply to the samples analyzed in accordance with the chain of custody document. This analytical report must be reproduced in its entirety.

Eagle Environmental Consulting, LLC
 8000 W 44th Ave
 Wheat Ridge CO 80033

Andrew Newberry
 Project Number: [none]
 Project: Noble - Shable USX AB #11-14P

Total Metals by 6020B - Quality Control
Waypoint Analytical, LLC.

Analyte	Result	Reporting Limit	Units	Spike Level	Source Result	%REC	%REC Limits	RPD	RPD Limit	Notes
Batch L721239 - 3050B										
MSD (L 88386-MSD-L721239)			Source: 88386			Prepared: 12/07/2023 Analyzed: 12/21/2023				
Selenium	5.38	0.25	mg/Kg dry	4.94	0.925	90	75-125	5.1	80	
Arsenic	3.82	0.25	"	2.47	1.35	100	75-125	5.3	80	
Barium	102	0.25	"	4.94	100	41	75-125	0.9	80	*
Cadmium	0.732	0.25	"	0.494	0.268	94	75-125	0.1	80	
Lead	4.49	0.25	"	2.47	2.54	79	75-125	3.6	80	
MS (L 88386-MS-L721239)			Source: 88386			Prepared: 12/07/2023 Analyzed: 12/21/2023				
Barium	103	0.25	mg/Kg dry	4.65	100	65	75-125			*
Cadmium	0.731	0.25	"	0.465	0.268	100	75-125			
Lead	4.33	0.25	"	2.33	2.54	77	75-125			
Selenium	5.11	0.25	"	4.65	0.925	90	75-125			
Arsenic	3.62	0.25	"	2.33	1.35	98	75-125			
LCS (LCS-L721239)						Prepared: 12/07/2023 Analyzed: 12/21/2023				
Barium	4.84	0.25	mg/Kg	5		97	80-120			
Selenium	4.63	0.25	"	5		93	80-120			
Cadmium	0.507	0.25	"	0.5		101	80-120			
Arsenic	2.49	0.25	"	2.5		100	80-120			
Lead	2.57	0.25	"	2.5		103	80-120			
LRB (LRB-L721239)						Prepared: 12/07/2023 Analyzed: 12/21/2023				
Selenium	ND	0.25	mg/Kg				-			
Arsenic	ND	0.25	"				-			
Barium	ND	0.25	"				-			
Cadmium	ND	0.25	"				-			
Lead	ND	0.25	"				-			

Origins Laboratory, Inc.



The results in this report apply to the samples analyzed in accordance with the chain of custody document. This analytical report must be reproduced in its entirety.

Eagle Environmental Consulting, LLC
8000 W 44th Ave
Wheat Ridge CO 80033

Andrew Newberry
Project Number: [none]
Project: Noble - Shable USX AB #11-14P

Notes and Definitions

* QC Failure

ND Analyte NOT DETECTED at or above the reporting limit

RPD Relative Percent Difference

All soil results are reported on a wet weight basis.

Calculated results may use J-flag data (instead of reported "ND") as part of calculation to provide a more accurate result.

Origins Laboratory, Inc.



The results in this report apply to the samples analyzed in accordance with the chain of custody document. This analytical report must be reproduced in its entirety.

Jordan A. Bynon, Project Manager