



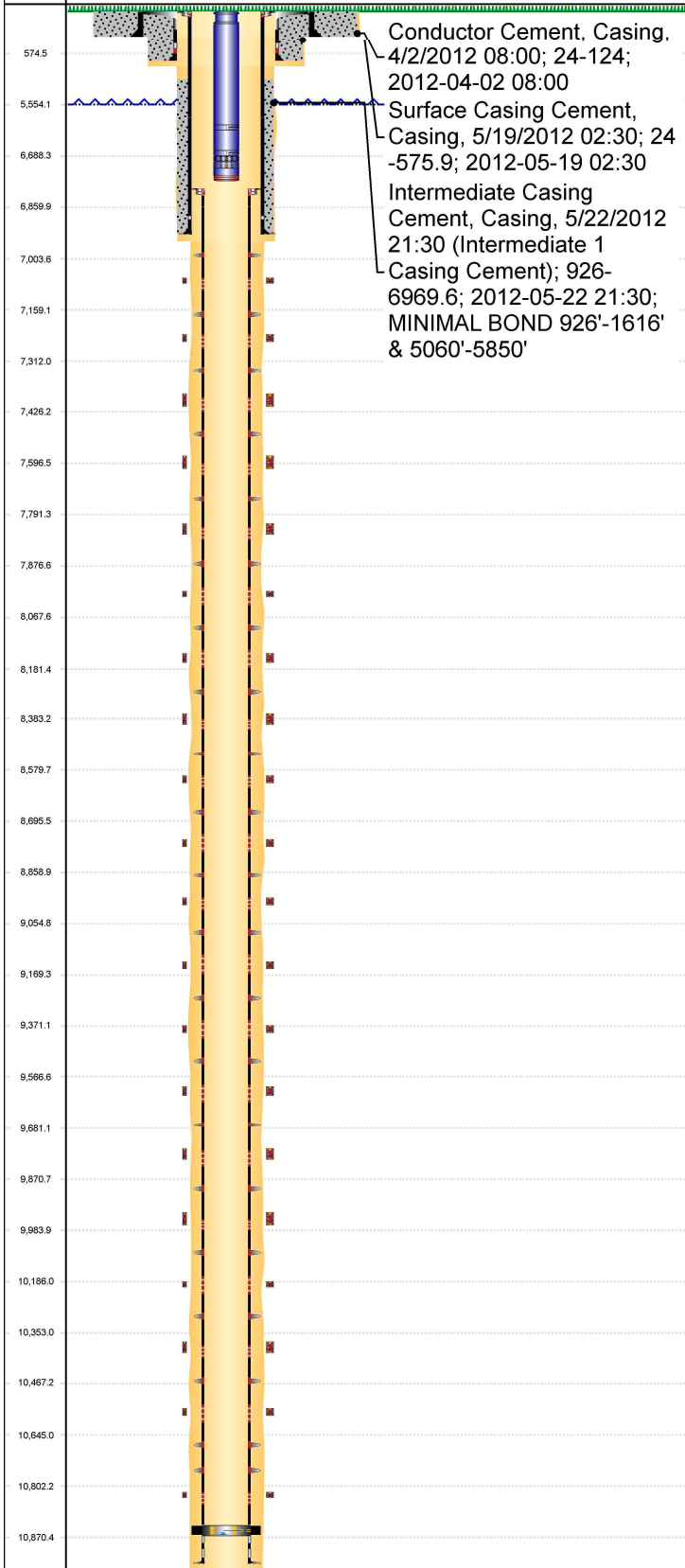
P&A Wellbore For State

Well Name: SLW STATE PC BB18-67HN

Original Hole [Land]

MD
(ftK
B)

Vertical schematic (actual)



Conductor Cement. Casing, 4/2/2012 08:00; 24-124; 2012-04-02 08:00
 Surface Casing Cement, Casing, 5/19/2012 02:30; 24-575.9; 2012-05-19 02:30
 Intermediate Casing Cement, Casing, 5/22/2012 21:30 (Intermediate 1 Casing Cement); 926-6969.6; 2012-05-22 21:30; MINIMAL BOND 926'-16'16' & 5060'-5850'

Well Header

Surface UWI 0512334674	Business Unit Rockies	Gov Auth Dist	Prod Tree Loc Land
Orig. KB to Gnd (ft) 24.00	Original Spud Date 5/18/2012	Abandon Date	Well Sub-Status PR
Comment 2 WELL PAD			

Surface Location (Congressional)

Qtr 3 SW	Qtr 4 NW	Section 18	Twp/Sl... 5	Range 63	Rng E/W W	Latitude (°) 40.40144510	Longitude (°) -104.486838756
-------------	-------------	---------------	----------------	-------------	--------------	-----------------------------	---------------------------------

Wellbore Sections

Section Des	Hole Size (in)	Top Depth (ftKB)	Btm Depth (ftKB)
CONDUCTOR	24	24.0	124.0
SURFACE	13 3/4	124.0	585.0
INTERMEDIATE	8 3/4	585.0	6,979.0
PRODUCTION	6 1/8	6,979.0	10,895.0

Casing Strings

Csg Des	Run Date	OD (in)	Wt/Len (lb/ft)	Grade	Top Depth (MD) (ftKB)	Set Depth (MD) (ftKB)
Conductor	4/2/2012	16	75.00	J-55	24	124
Surface	5/19/2012	9 5/8	36.00	J-55	24	575.9
Intermediate Casing 1	5/22/2012	7	26.00	P-110	24	6969.6
Production Casing	5/25/2012	4 1/2	11.60	P-110	6850.3	10880

Cement

Des	Start Date	Top (ftKB)	Btm (ftKB)
Conductor Cement	4/2/2012	24.0	124.0
Surface Casing Cement	5/19/2012	24.0	575.9
Intermediate 1 Casing Cement	5/22/2012	926.0	6,969.6

Zone Statuses

Zone Name	Status Date	Status	Fluid Type	Job	Prod Method
NIOBRARA	7/13/2012	PR		DRILLING/COMPLETION - ORIGINAL, 4/2/2012...	
NIOBRARA	7/14/2012	PR	Water		Flowing

Stim/Frac Stage

Zone	Start Date	Top (ftKB)	Btm (ftKB)
	6/30/2012	7,058.0	7,059.0
	6/30/2012	7,219.0	7,220.0
	6/30/2012	7,423.0	7,424.0
	6/30/2012	7,596.0	7,597.0
	6/30/2012	7,799.0	7,800.0
	6/30/2012	7,975.0	7,976.0
	6/30/2012	8,179.0	8,180.0
	6/30/2012	8,383.0	8,384.0
	6/30/2012	8,588.0	8,589.0
	6/30/2012	8,791.0	8,792.0
	6/30/2012	8,962.0	8,963.0
	6/30/2012	9,167.0	9,168.0
	6/30/2012	9,371.0	9,372.0
	6/30/2012	9,575.0	9,576.0
	6/30/2012	9,778.0	9,779.0
	6/30/2012	9,981.0	9,982.0
	6/30/2012	10,186.0	10,187.0
	6/30/2012	10,361.0	10,362.0
	6/30/2012	10,561.0	10,562.0
NIOBRARA, Original Hole	6/30/2012	10,810.0	10,811.0

Other In Hole

Run Date	Des	Make	OD (in)	Top (ftKB)	Btm (ftKB)
12/6/2019	Bumper Spring			6,210.0	6,212.0

Logs

Date	Type	Depth Top (MD) (ftKB)	Btm (ftKB)
5/18/2012	MUD LOGGING	2,500	10,895.0
5/18/2012	MWD GAMMA	575	10,895.0
6/22/2012	CBL/CCL/GR	24	6,809.0

Wellbore Plug Back Total Depths

Date	Type	Com	PBTD (ftKB)
5/25/2012	FLOAT COLLAR	FLOAT COLLAR	10,870