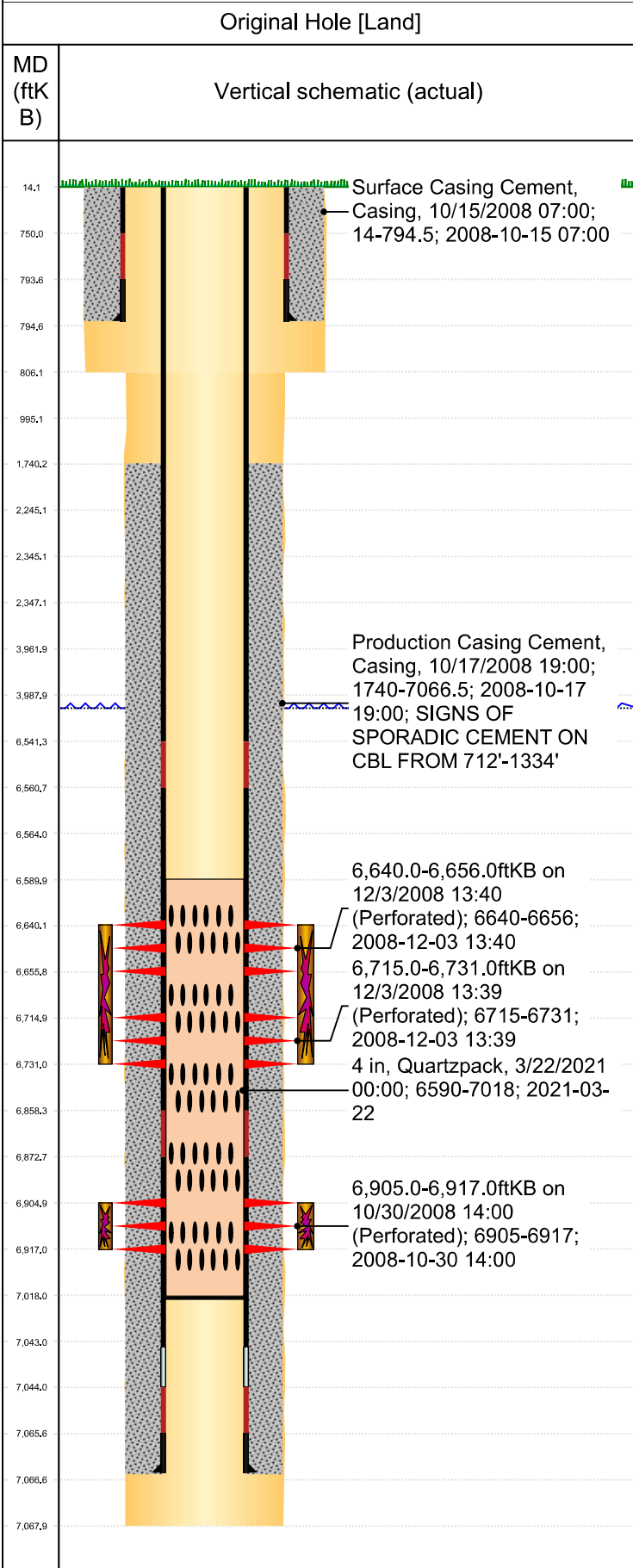




# P&A Wellbore For State

Well Name: HANSCOME C21-19



Well Header									
Surface UWI 0512329038		Business Unit Rockies		Gov Auth Dist		Prod Tree Loc Land			
Orig. KB to Gnd (ft) 14.00		Original Spud Date 10/14/2008		Abandon Date		Well Sub-Status TA		High...	
								N	
Comment									
Surface Location (Congressional)									
Qtr 3 SW	Qtr 4 NW	Section 21	Twonshp 4	Twonsh... N	Range 64	Rng E/... W	Latitude (°) 40.30144656 3	Longitude (°) -104.560569003	
Wellbore Sections									
Section Des		Hole Size (in)		Top Depth (ftKB)		Btm Depth (ftKB)			
SURFACE		12 1/4		14.0		806.0			
PRODUCTION		7 7/8		806.0		7,068.0			
Casing Strings									
Csg Des		Run Date		OD (in)	Wt/Len (lb/ft)	Grade	Top Depth (MD) (ftKB)	Set Depth (MD) (ftKB)	
Surface		10/15/2008		8 5/8	24.00	J-55	14	794.5	
Production Casing		10/17/2008		4 1/2	11.60	M-80	14	7066.5	
Cement									
Des		Start Date		Top (ftKB)		Btm (ftKB)			
Surface Casing Cement		10/15/2008		14.0		794.5			
Production Casing Cement		10/17/2008		1,740.0		7,066.5			
Zone Statuses									
Zone Name	Status Date	Status	Fluid Type	Job			Prod Method		
NIORARA	12/4/2008	PR		DRILLING/COMPLETION - ORIGINAL, 10/13/200...					
NIORARA	3/22/2021	TA		SET PLUG, 3/18/2021 11:00					
CODELL	12/4/2008	PR		DRILLING/COMPLETION - ORIGINAL, 10/13/200...					
CODELL	3/22/2021	TA		SET PLUG, 3/18/2021 11:00					
Perforation Data									
Linked Zone		Explosive Type	Entered Shot Total	Top (ftKB)	Btm (ftKB)	Date			
NIORARA, Original Hole		A	32	6,640.0	6,656.0	12/3/2008			
NIORARA, Original Hole		B	32	6,715.0	6,731.0	12/3/2008			
CODELL, Original Hole		01	48	6,905.0	6,917.0	10/30/2008			
Stim/Frac Stage									
Zone		Start Date		Top (ftKB)		Btm (ftKB)			
NIORARA, Original Hole		12/3/2008		6,640.0		6,731.0			
CODELL, Original Hole		12/3/2008		6,905.0		6,917.0			
Other In Hole									
Run Date	Des		Make	OD (in)	Top (ftKB)	Btm (ftKB)			
3/22/2021	Quartzpack			4	6,590.0	7,018.0			
Logs									
Date	Type				Depth Top (MD) (ftKB)	Btm (ftKB)			
10/17/2008	Caliper/Comp. Density/Neutron/GR/SP/ML				2,480	7,066.0			
10/17/2008	DIL/GR/SP/Caliper				795	7,066.0			
10/29/2008	CBL/CCL/GR				500	7,028.0			
Wellbore Plug Back Total Depths									
Date	Type	Com						PBTD (ftKB)	
10/17/2008	FLOAT COLLAR							7,044	
2/11/2009	PLUG REMNANTS							7,018	