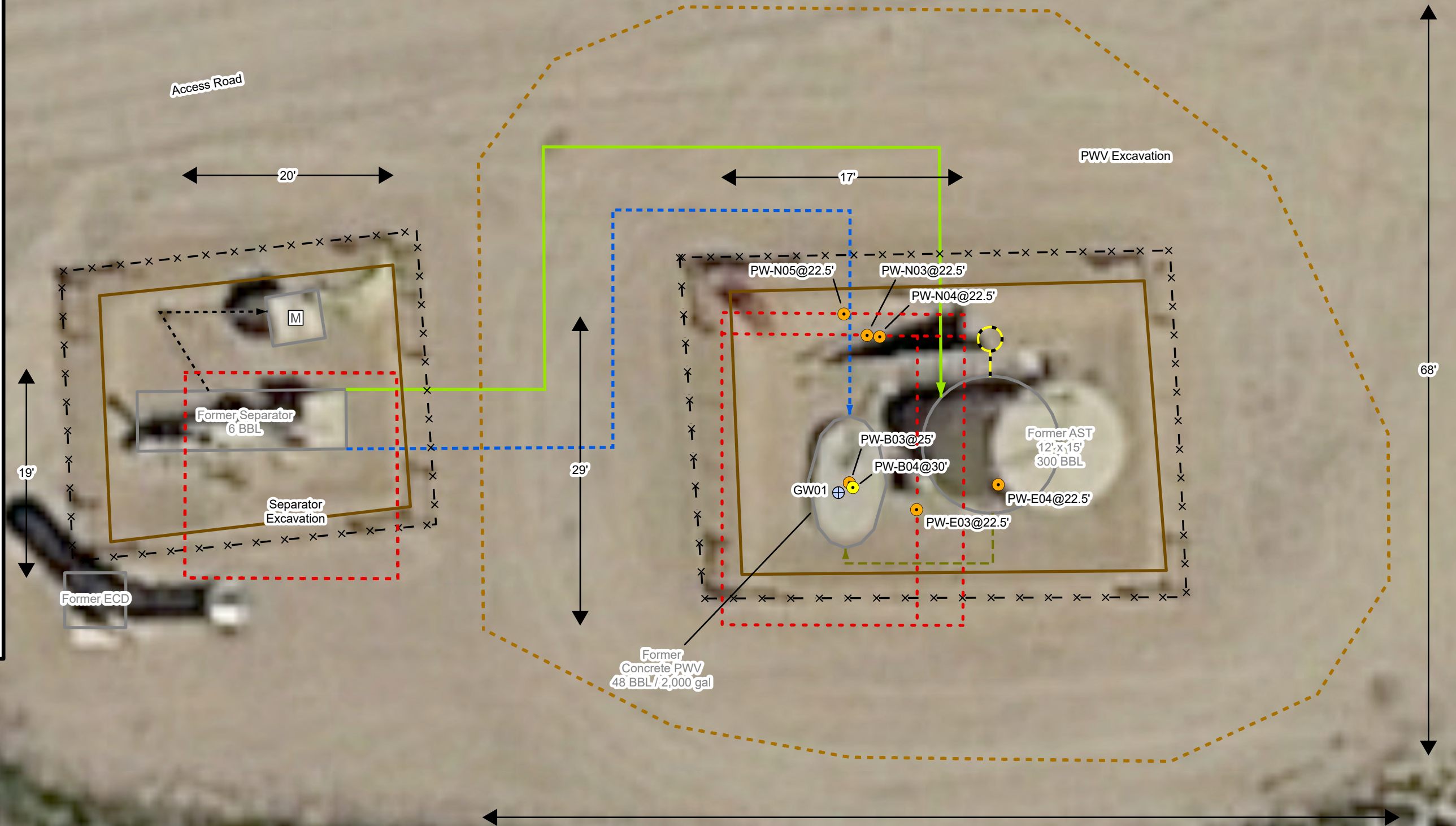


## Legend

- Soil Sample Location
- Soil Screening Location
- ⊕ Groundwater Sample Location
- Former Drain Line
- - → Former Gas Line
- Former Oil Dump
- Former Water Dump
- Flowline (Removed)
- - - Former Drip Containment
- Former Earthen Berm
- X-X Former Fence
- M Former Meter House
- Excavation Extent
- Top Of Excavation Slope

Notes  
 BBL: Barrel  
 AST: Above Ground Storage Tank  
 PWV: Produced Water Vessel  
 ECD: Emission Control Device



0 10 20  
 Feet

Sources: Environmental Systems Research Institute (ESRI)

## Excavation Site Map (4/14/2022 - 5/25/2022)

Houston 17-7L, 17-8L O SA Facility  
 Kerr-McGee Oil & Gas Onshore, LP  
 SENE SEC 17-T3N-R67W  
 Weld County, CO  
 Project Number: 09A1417087



FIGURE  
**1B**