

Xbolt GAMMA RAY

1in/100ft Measured Depth

Final Print

Recorded Mode



Company: **PDC Energy Inc.**

Well: Ottesen 22C

Field Name: Wattenberg

Country Name: United States

State Name: Colorado

County Name: Weld

Latitude	40°00'16.558"N	API Number	05-123-44370
Longitude	104°46'42.349"W	Rig Name	True Drilling 41
Spud Date	25-Oct-2023	Rig Type	Land rig
Log Interval	2493.50--17844.00(ft)	Job Number	O.1042353.27
Depth Source	Driller's Depth	Print Type	Final Print
Log Measured From	Drill Floor	Northing	1245344.75(ftUS)
Rig Floor Above GL	25.00(ft)	Easting	3202134.46(ftUS)
Ground Level Above MSL	5076.00(ft)	Coordinate System	NAD83 Colorado State Plane, Northern Zone, US Feet

Disclaimer

THE USE OF AND RELIANCE UPON THIS RECORDED-DATA BY THE HEREIN NAMED COMPANY (AND ANY OF ITS AFFILIATES, PARTNERS, REPRESENTATIVES, AGENTS, CONSULTANTS AND EMPLOYEES) IS SUBJECT TO THE TERMS AND CONDITIONS AGREED UPON BETWEEN SLB AND THE COMPANY, INCLUDING: (a) RESTRICTIONS ON USE OF THE RECORDED-DATA; (b) DISCLAIMERS AND WAIVERS OF WARRANTIES AND REPRESENTATIONS REGARDING COMPANY'S USE AND RELIANCE UPON THE RECORDED-DATA; AND (c) CUSTOMER'S FULL AND SOLE RESPONSIBILITY FOR ANY INFERENCE DRAWN OR DECISION MADE IN CONNECTION WITH THE USE OF THIS RECORDED-DATA.

Operational Run Summary

Notes:

Run 1 (Bit Size: 8.5in)

DateTime Log Started	28-Oct-2023 01:32:22	DateTime Log Finished	29-Oct-2023 18:56:25
Start Depth	2521(ft)	Stop Depth	12337(ft)
Mud Type	Oil Based Mud	Mud Density	9.8(lbm/gal)
Potassium	0(%)	Barite	Yes
GR Sensor Offset	24.19(ft)	Calibration Coefficient	0
DNI Sensor Offset	27.83(ft)		

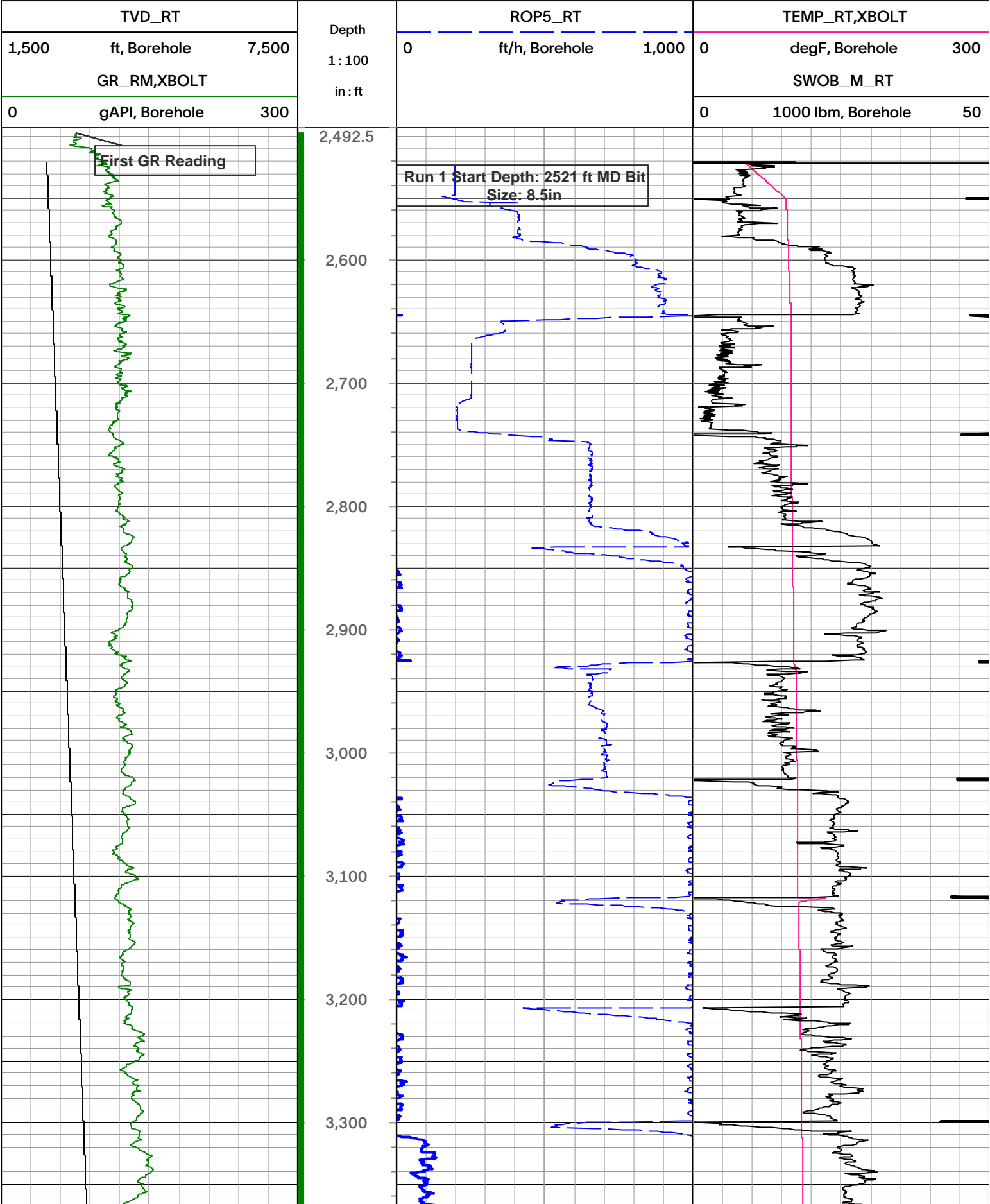
Run 2 (Bit Size: 8.5in)

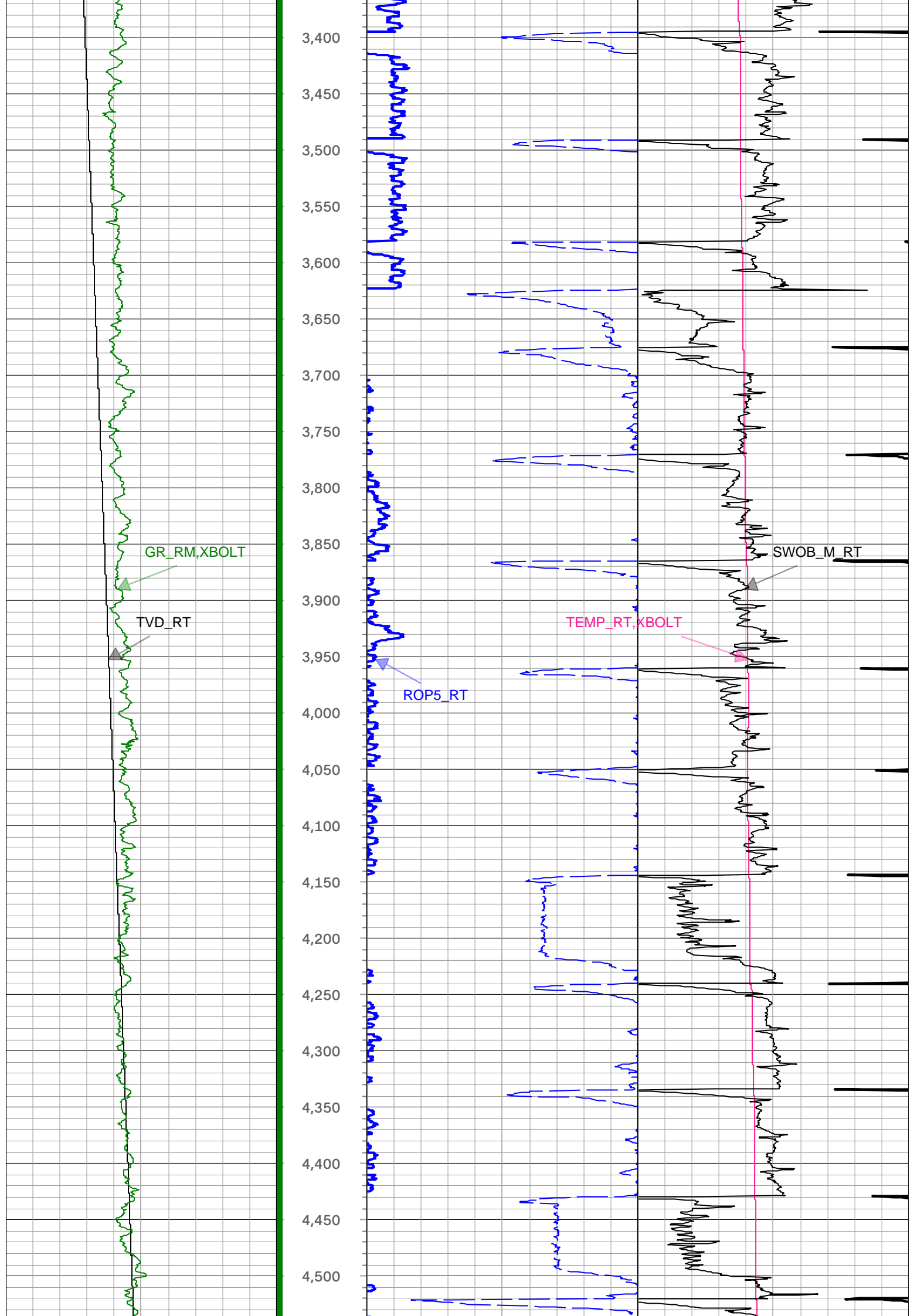
DateTime Log Started	29-Oct-2023 19:20:22	DateTime Log Finished	31-Oct-2023 03:14:57
Start Depth	12337(ft)	Stop Depth	17844(ft)
Mud Type	Oil Based Mud	Mud Density	9.8(lbm/gal)

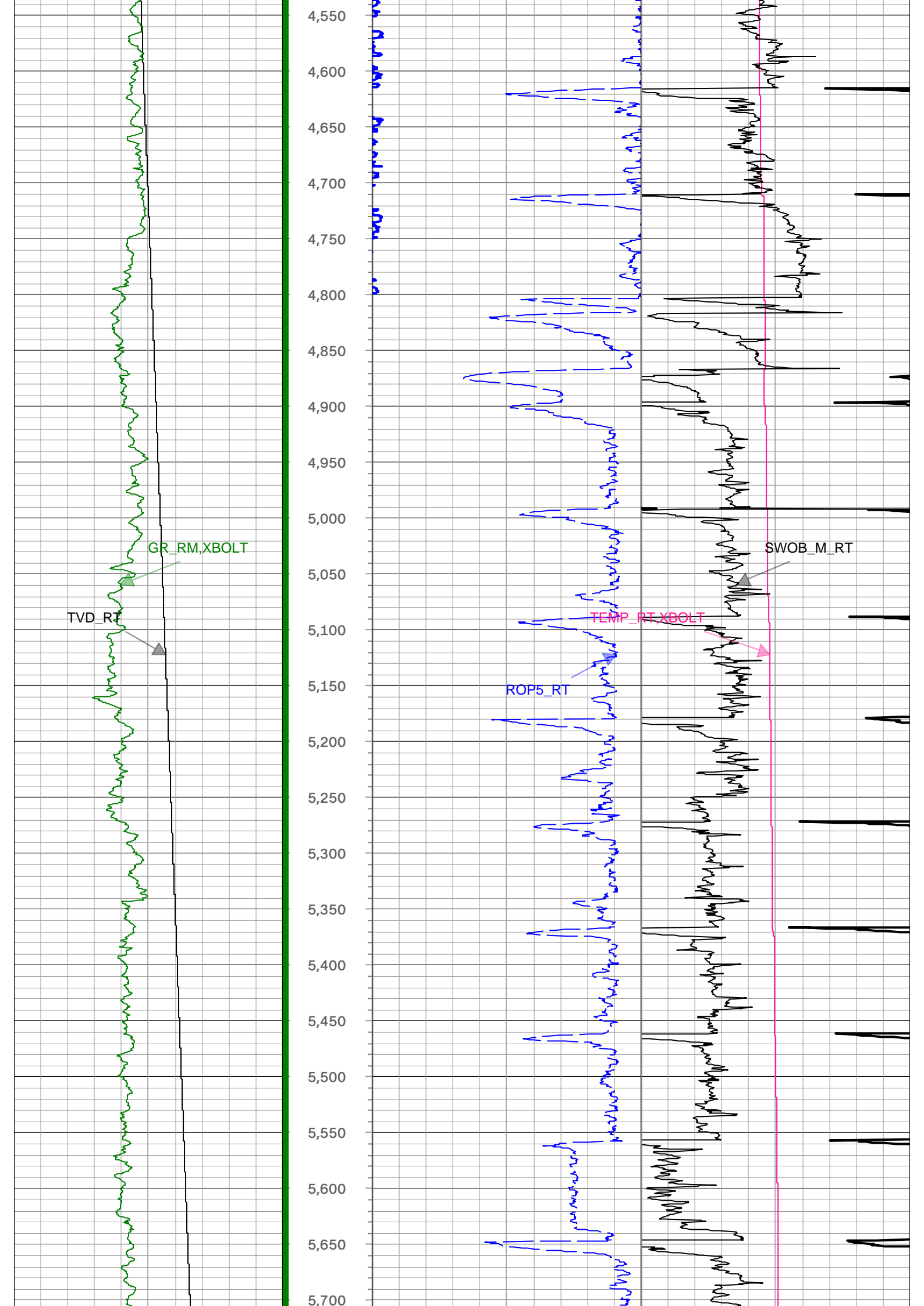
Potassium	0(%)	Barite	Yes
GR Sensor Offset	24.28(ft)	Calibration Coefficient	0
DNI Sensor Offset	27.92(ft)		

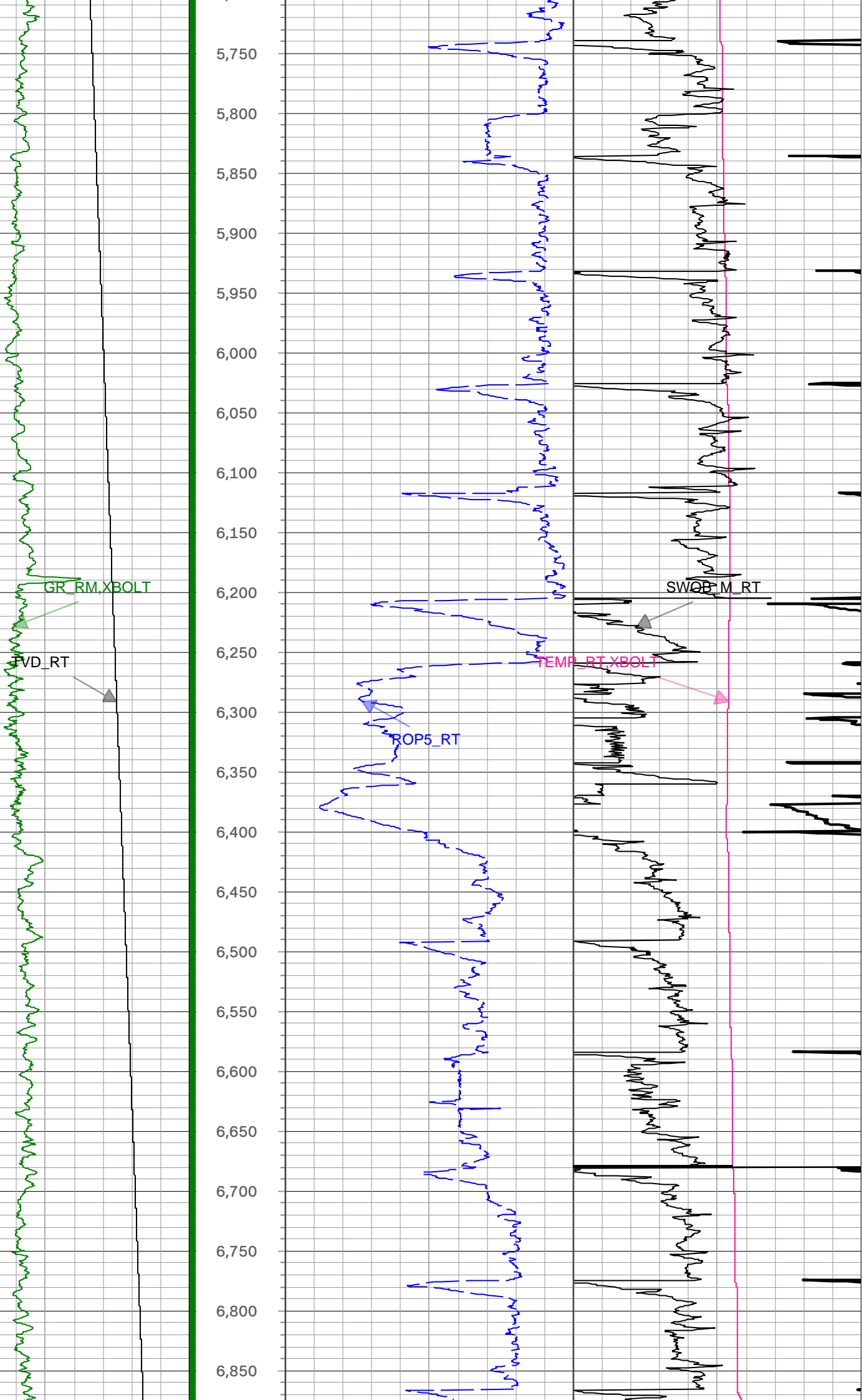
● Log

Description: Xbolt GAMMA RAY	Format: XBOLT_PDC	Index Scale: 1in/100ft
Index Type: Measured Depth	Creation Date: 05-Nov-2023	Index Unit: ft









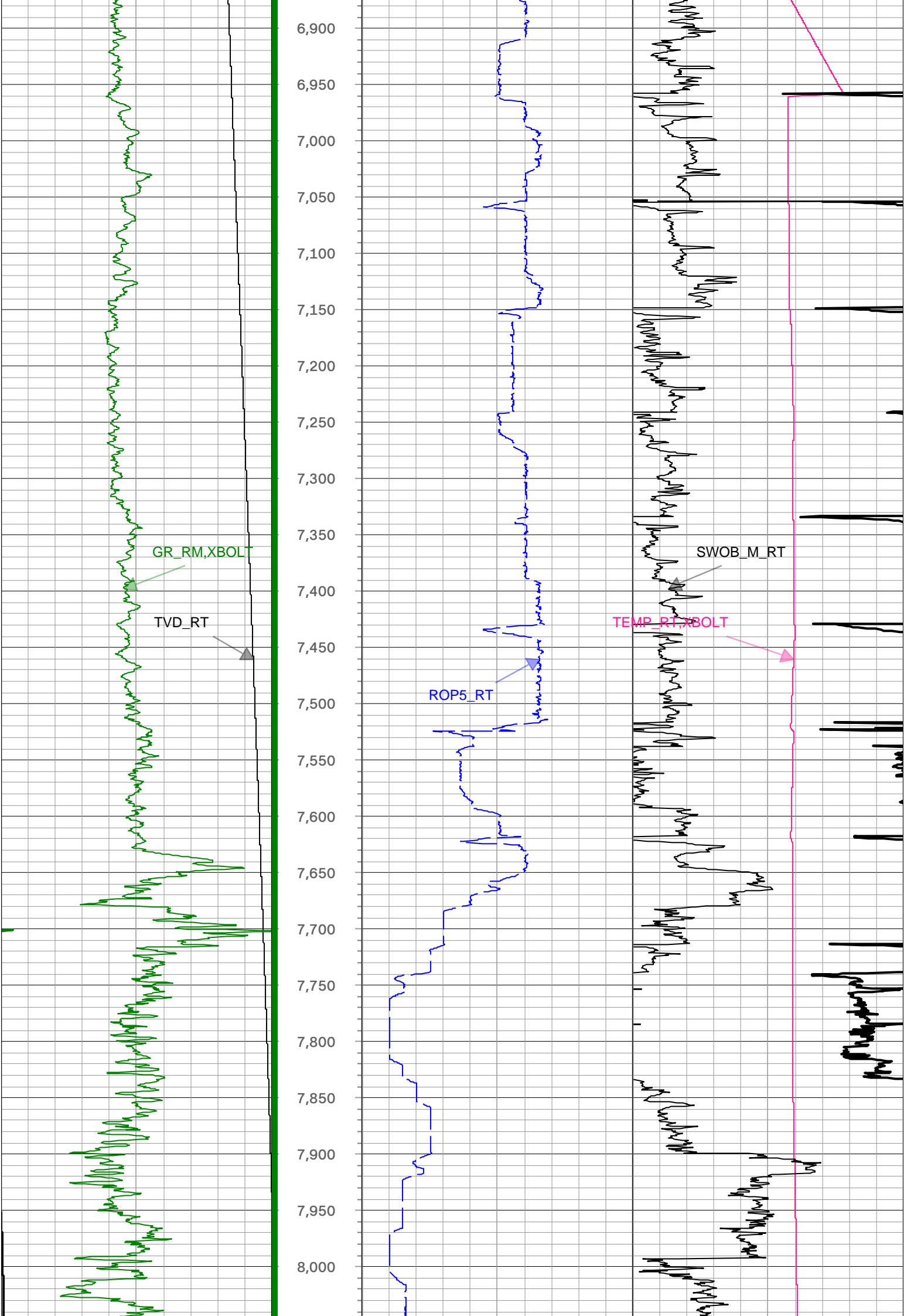
GR_RM, XBOLT

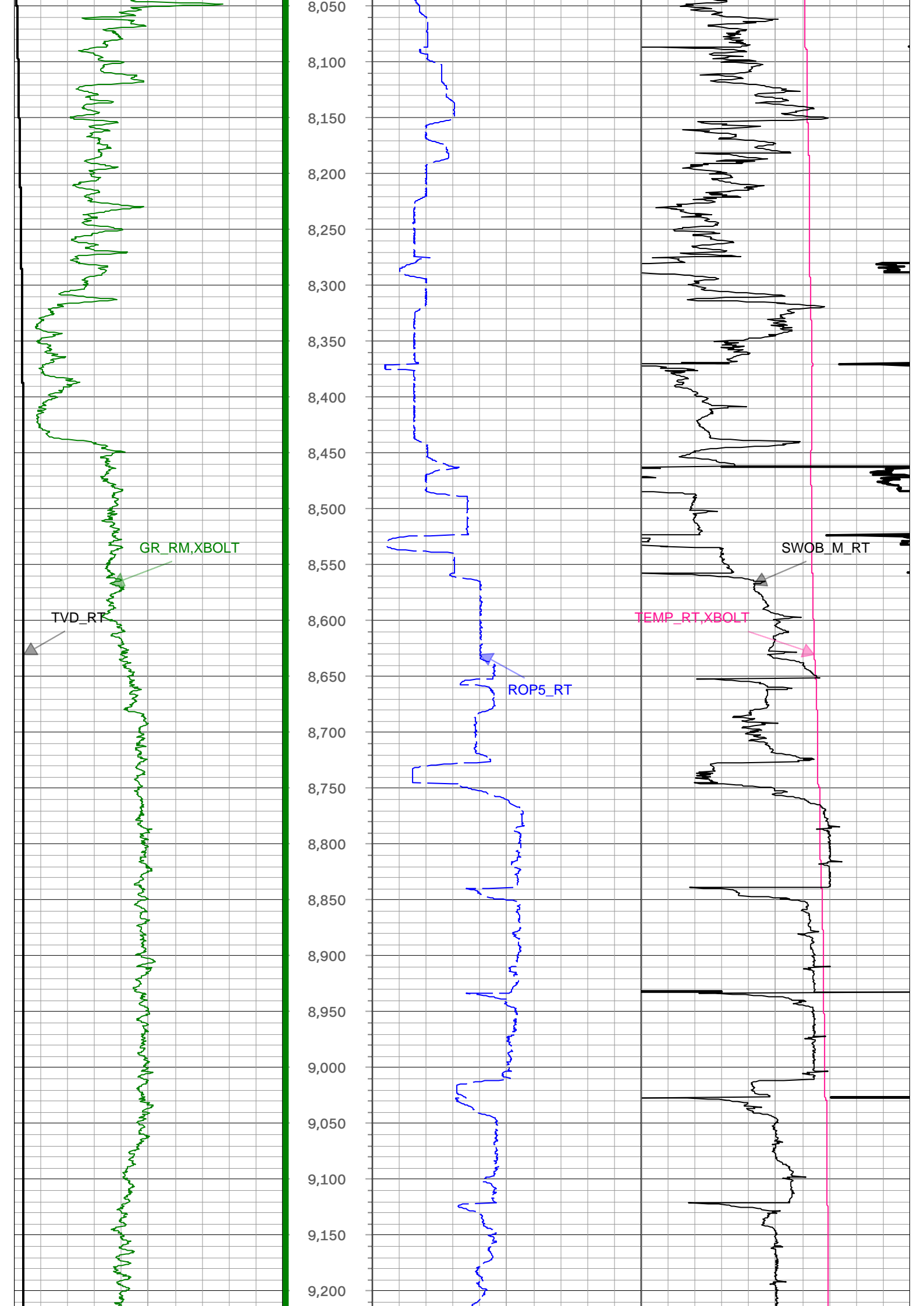
VVD_RT

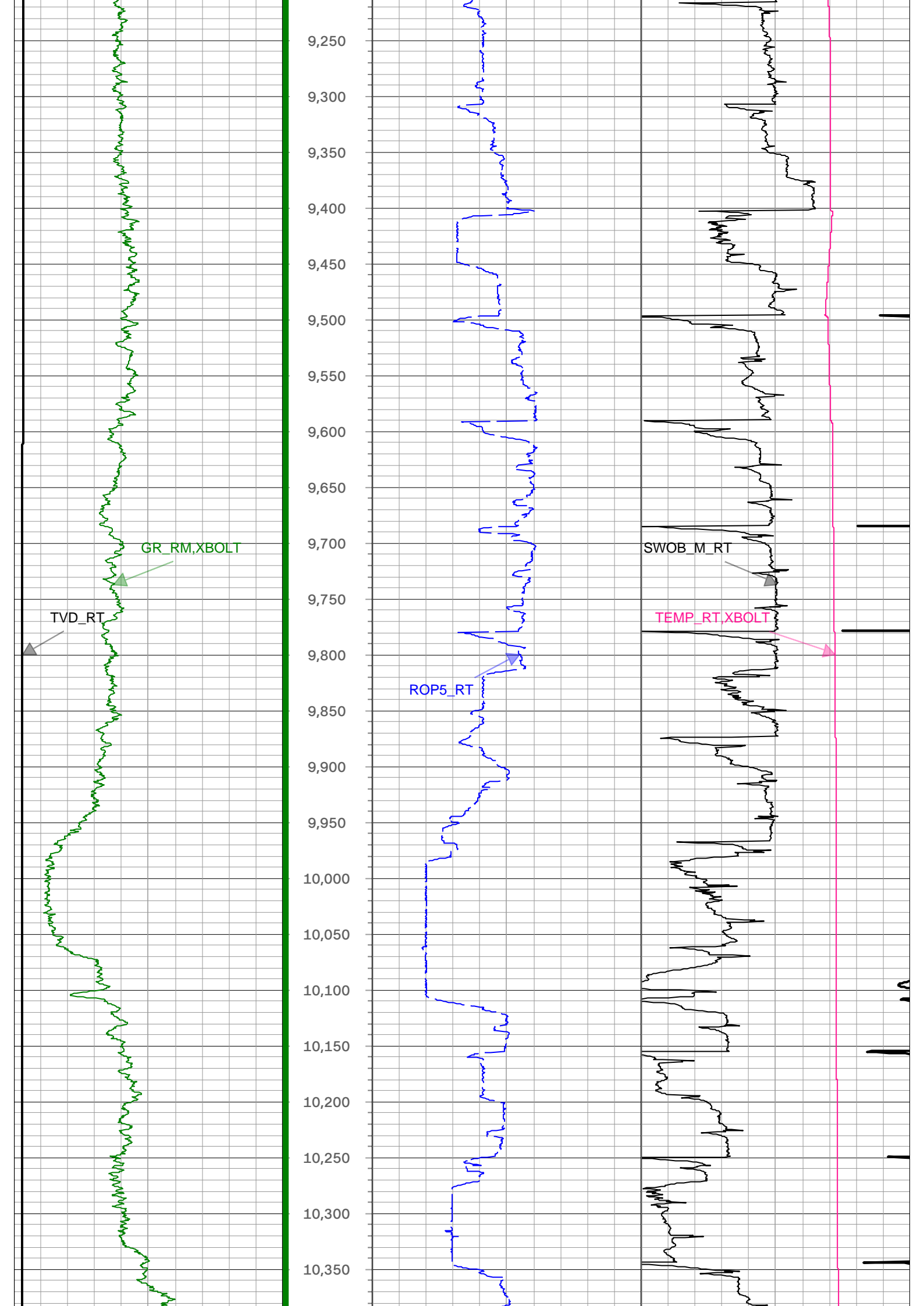
ROP5_RT

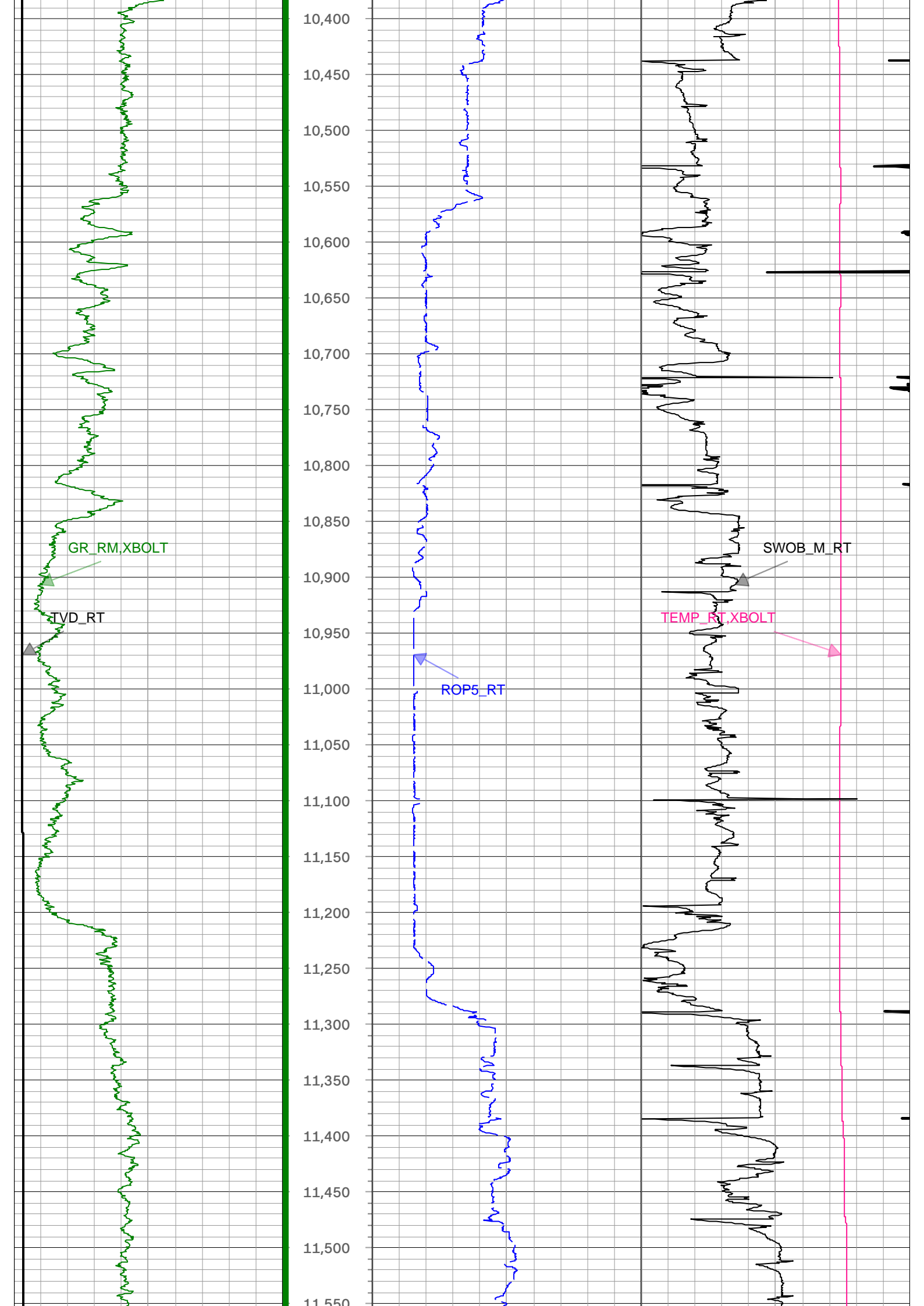
TEMP_RT, XBOLT

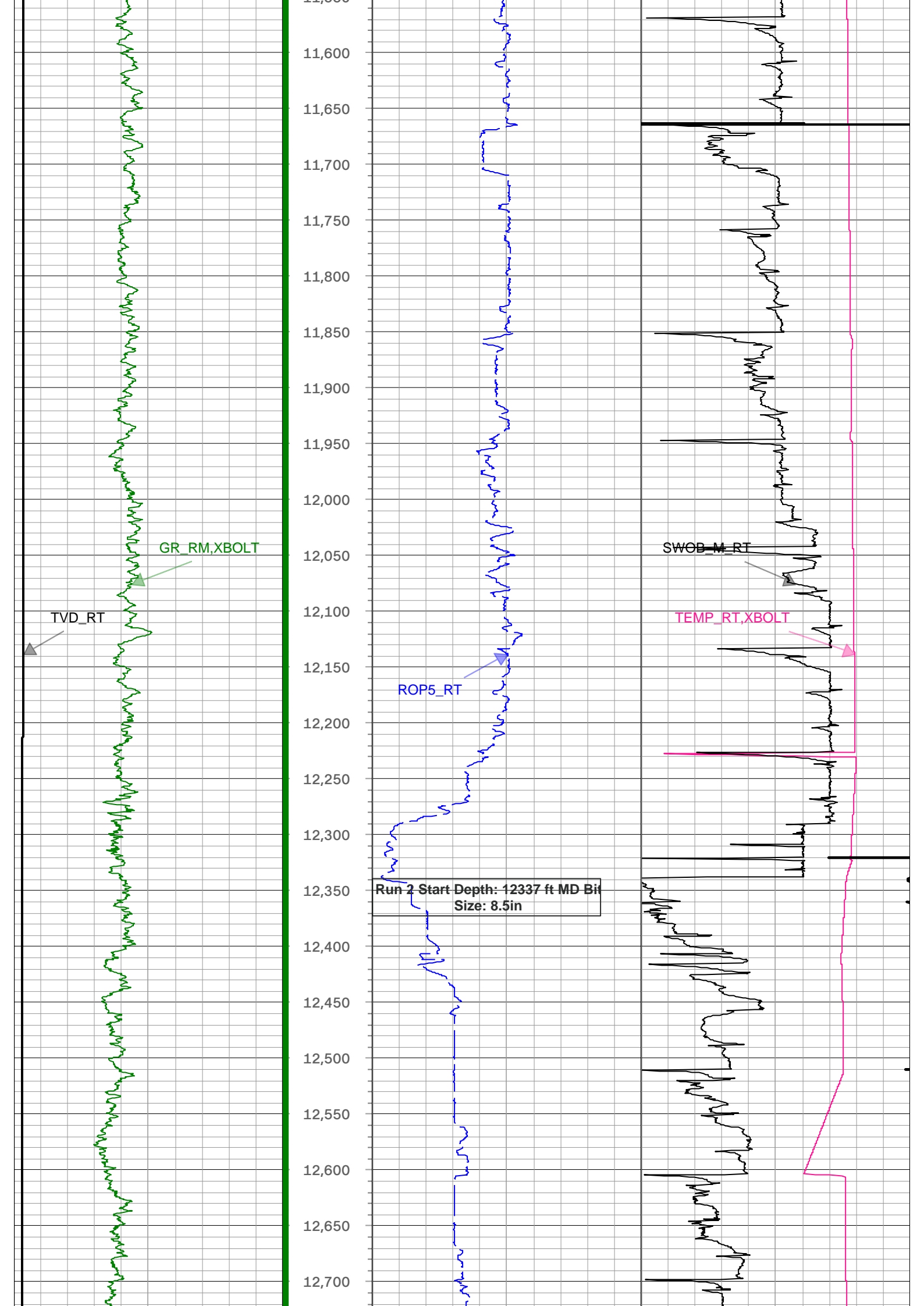
SWOP M_RT

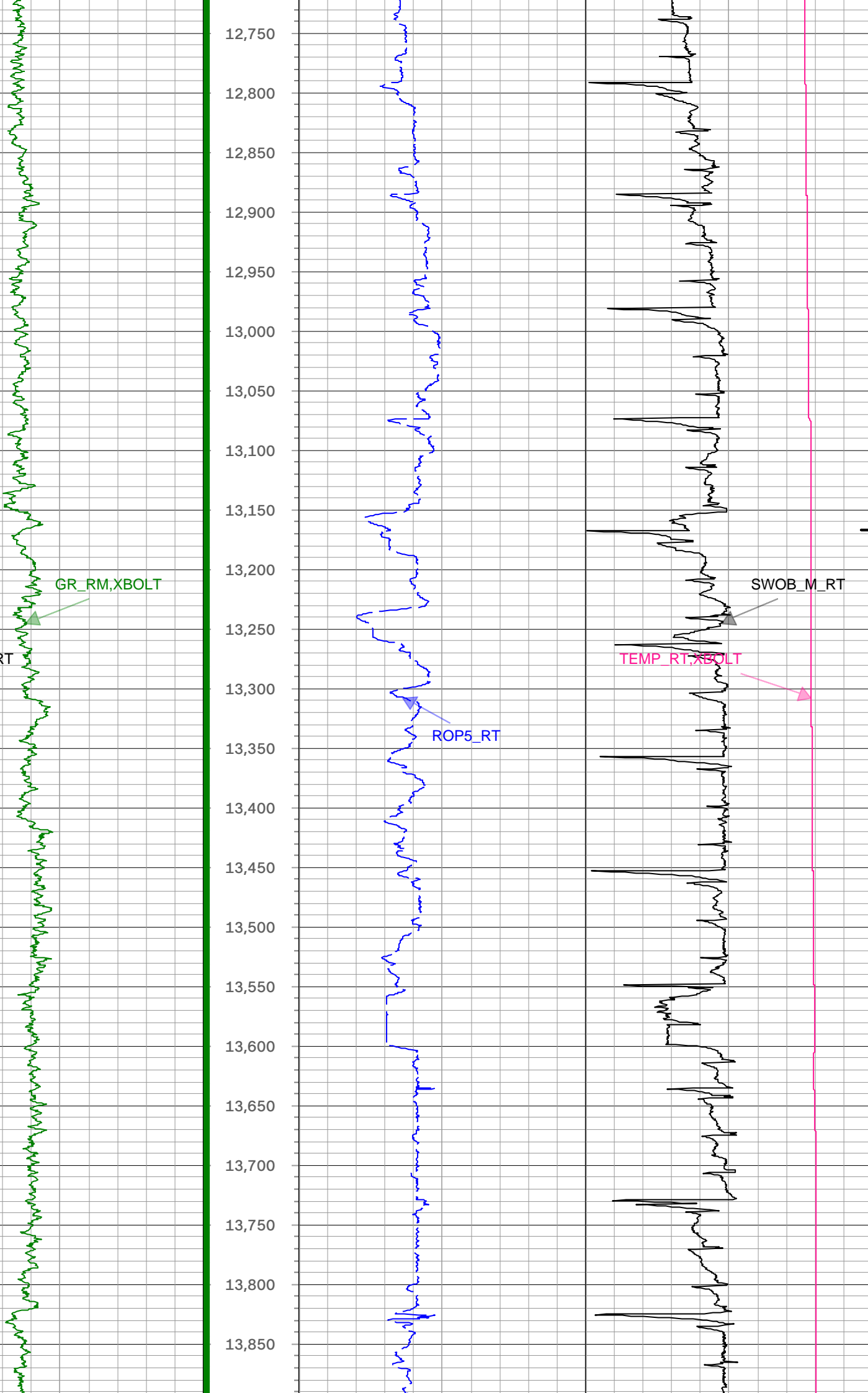


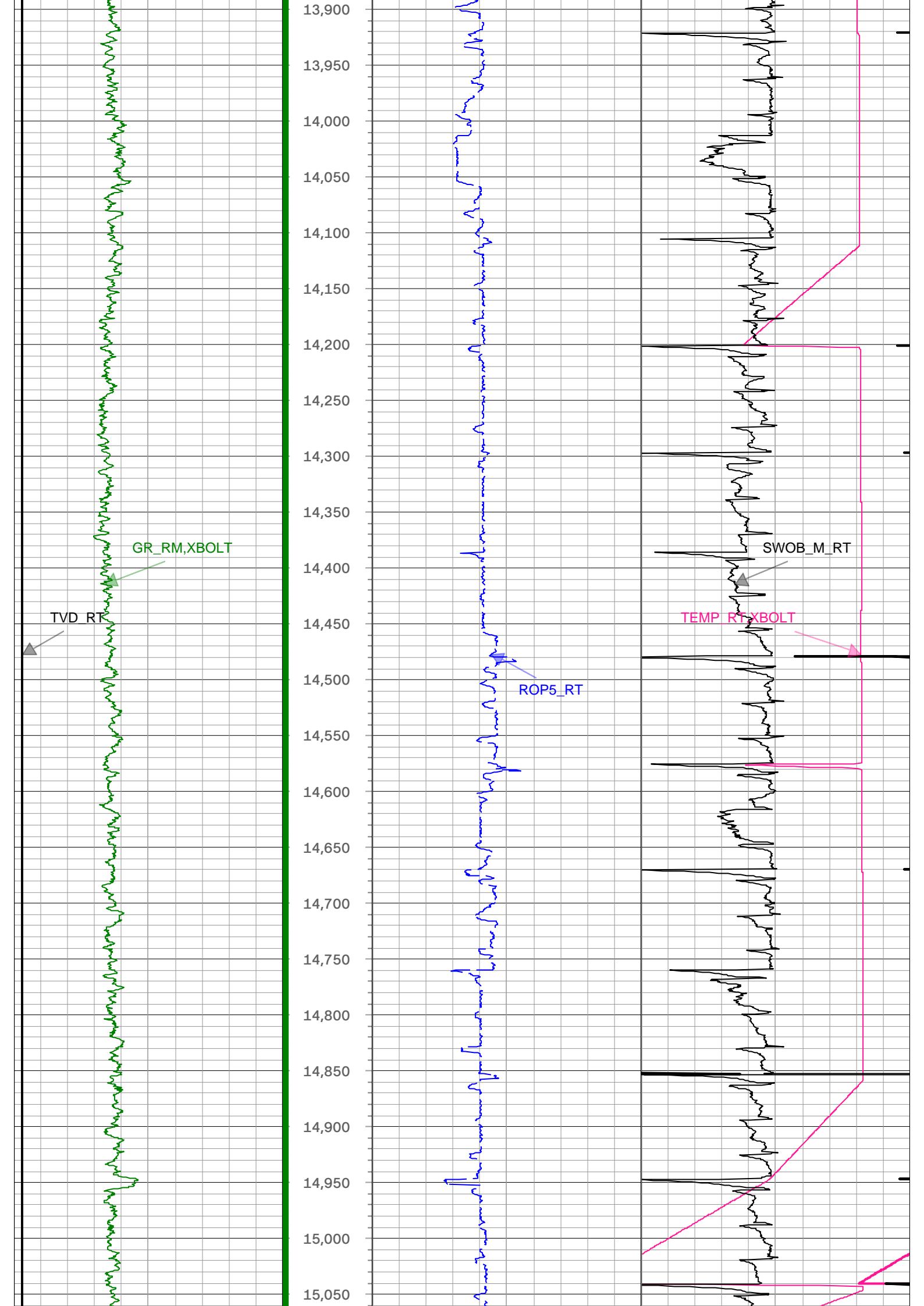


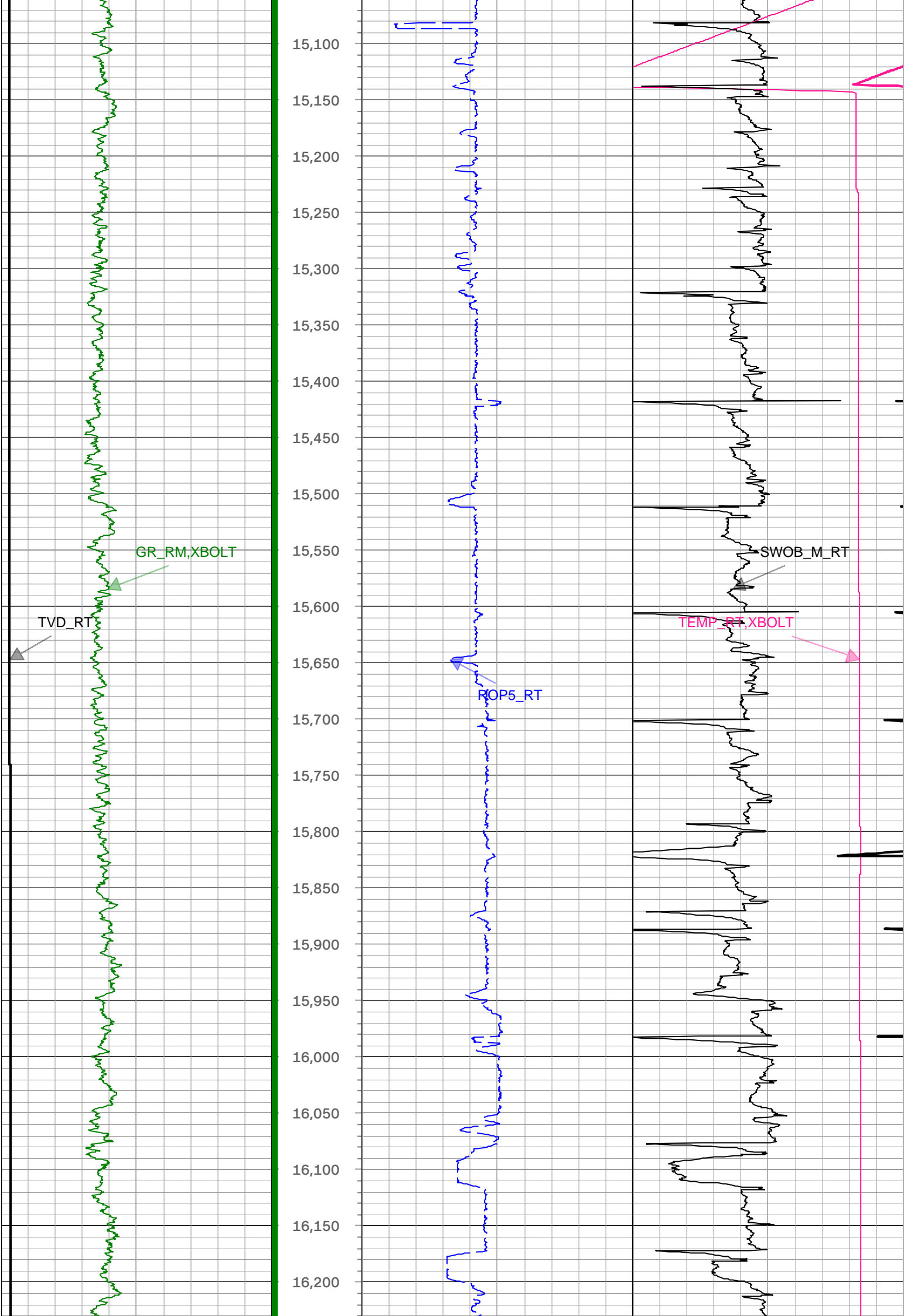


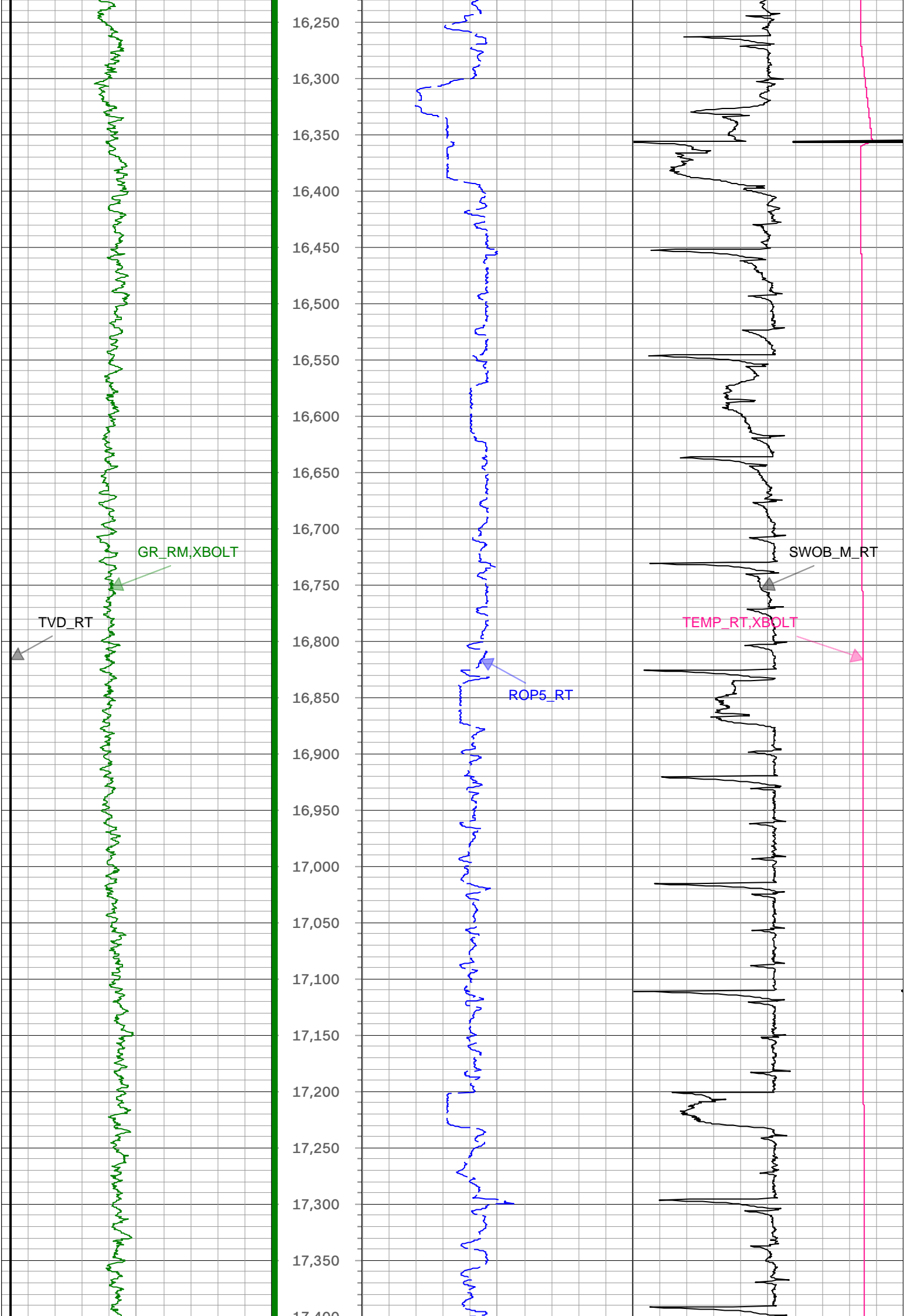


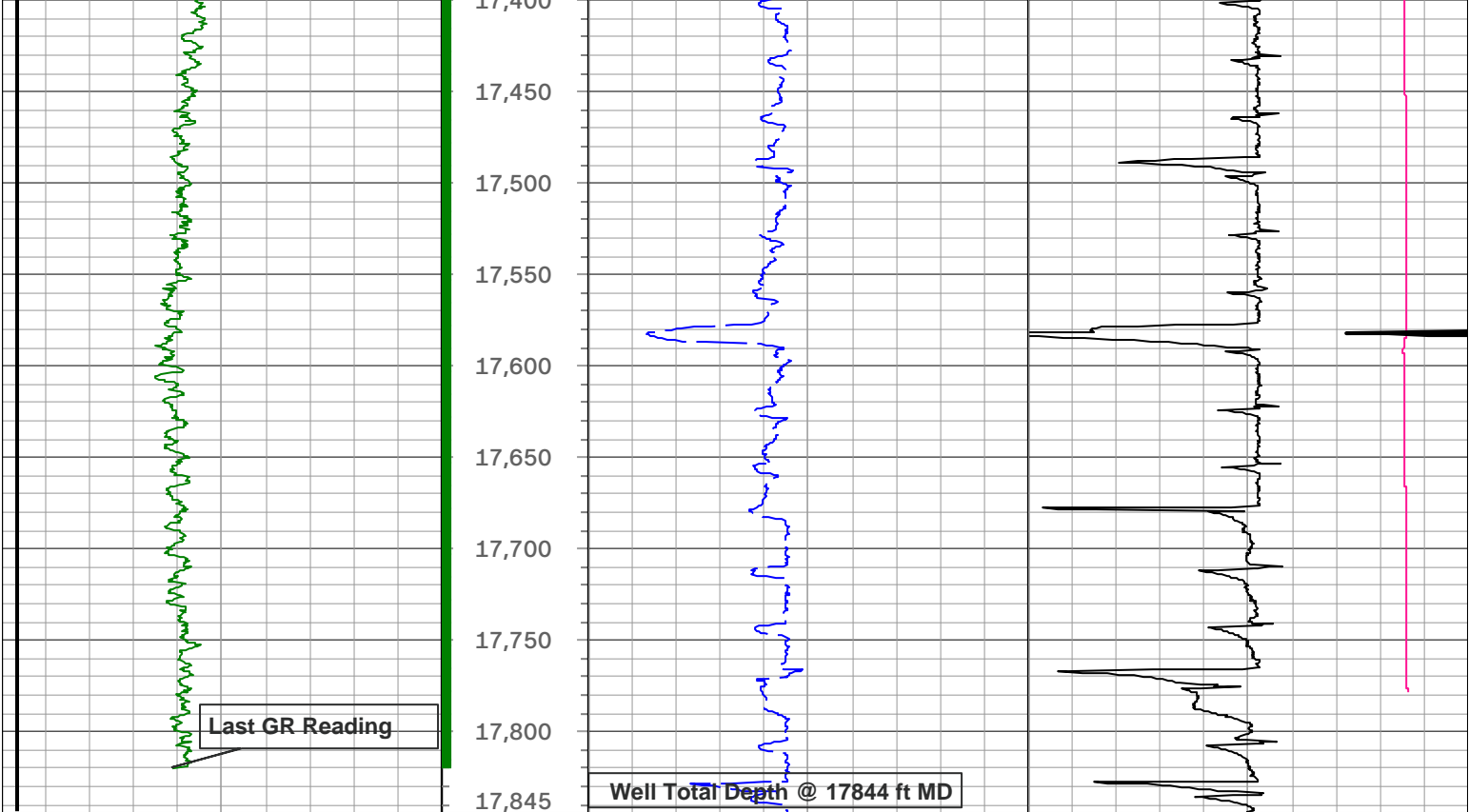












TVD_RT			Depth 1 : 100 in : ft	ROP5_RT			TEMP_RT, XBOLT		
1,500	ft, Borehole	7,500		0	ft/h, Borehole	1,000	0	degF, Borehole	300
GR_RM, XBOLT							SWOB_M_RT		
0	gAPI, Borehole	300					0	1000 lbm, Borehole	50

Description: Xbolt GAMMA RAY Format: XBOLT_PDC Index Scale: 1in/100ft
 Index Type: Measured Depth Creation Date: 05-Nov-2023 Index Unit: ft

● Survey Record

Survey Calculation North Reference: True North

Tie In Point

Measured Depth:	0(ft)	Inclination:	0(deg)	Azimuth:	0(deg)
True Vertical Depth:	0(ft)	North Displacement:	0(ft)	East Displacement:	0(ft)

D&I Inits - Run - 1

Geomagnetic Model:	HDGM 2023	Geomagnetic Date:	24-Oct-2023 18:00:00
Location B:	51471 (nT)	Location G:	998.971 (mgn)
Magnetic Dip:	66.1 (deg)	Magnetic Dec:	7.621 (deg)
Total Correction:	7.621		

D&I Inits - Run - 2

Geomagnetic Model:	HDGM 2023	Geomagnetic Date:	23-Oct-2023 18:00:00
Location B:	51471 (nT)	Location G:	998.971 (mgn)
Magnetic Dip:	66.1 (deg)	Magnetic Dec:	7.621 (deg)
Total Correction:	7.621		

MD	Incl	Azim	TVD	V Sec	N/-S	E/-W	DLS	Closure Distance	Closure Azimuth	Tool Type
----	------	------	-----	-------	------	------	-----	------------------	-----------------	-----------

(ft)	(deg)	(deg)	(ft)	(ft)	(ft)	(ft)	(deg/100ft)	(ft)	(deg)	
0	0	0	0	0.00	0	0	0.00			TIP
153	1.49	215.15	152.98	1.81	-1.63	-1.15	0.97	1.99	215.15	MWD
244	2.37	225.7	243.93	4.42	-3.91	-3.17	1.04	5.03	219.07	MWD
336	5.28	236.07	335.72	8.94	-7.6	-8.05	3.24	11.07	226.64	MWD
453	8.35	233.26	451.88	18.96	-15.69	-19.33	2.64	24.89	230.93	MWD
541	10.64	234.84	538.67	29.47	-24.19	-31.09	2.62	39.39	232.11	MWD
630	14.33	238	625.55	42.8	-34.76	-47.15	4.22	58.58	233.6	MWD
717	17.32	239.06	709.24	58.66	-47.13	-67.39	3.45	82.24	235.04	MWD
804	18.03	238.71	792.13	76.22	-60.78	-90.01	0.83	108.61	235.97	MWD
891	17.76	238.36	874.92	94.11	-74.73	-112.81	0.33	135.32	236.48	MWD
978	19.7	239.76	957.31	112.6	-89.08	-136.78	2.29	163.23	236.92	MWD
1066	20.93	241.52	1039.84	132.18	-104.05	-163.41	1.56	193.72	237.51	MWD
1151	20.31	238.18	1119.4	151.68	-119.06	-189.29	1.56	223.62	237.83	MWD
1236	19.87	238	1199.22	171.39	-134.5	-214.07	0.52	252.82	237.86	MWD
1325	19.87	236.77	1282.92	192.08	-150.8	-239.55	0.47	283.07	237.81	MWD
1413	19.87	236.07	1365.69	212.9	-167.34	-264.47	0.27	312.97	237.68	MWD
1500	19.35	236.25	1447.64	233.32	-183.6	-288.72	0.6	342.16	237.55	MWD
1587	18.38	236.42	1529.97	252.93	-199.2	-312.13	1.12	370.28	237.45	MWD
1675	17.94	236.95	1613.58	271.94	-214.26	-335.05	0.53	397.71	237.4	MWD
1763	17.59	236.77	1697.39	290.48	-228.94	-357.54	0.4	424.55	237.37	MWD
1852	17.15	235.87	1782.33	309.01	-243.67	-379.65	0.58	451.12	237.31	MWD
1939	18.91	234.49	1865.05	328.18	-259.06	-401.74	2.08	478.03	237.18	MWD
2025	19.08	234.84	1946.37	348.27	-275.25	-424.58	0.24	505.99	237.05	MWD
2112	20.84	235.37	2028.14	369.42	-292.23	-448.94	2.03	535.67	236.94	MWD
2197	20.05	235.02	2107.78	390.54	-309.18	-473.32	0.94	565.35	236.85	MWD
2283	20.75	233.78	2188.39	412.16	-326.63	-497.69	0.96	595.3	236.72	MWD
2367	19.52	235.02	2267.26	433.01	-343.47	-521.19	1.55	624.19	236.61	MWD
2451	18.64	232.91	2346.64	452.95	-359.61	-543.4	1.33	651.62	236.5	MWD
2614	18.34	229.3	2501.23	492.19	-392.05	-583.62	0.73	703.08	236.11	Manual
2708	17.94	228.21	2590.56	515.18	-411.34	-605.63	0.56	732.11	235.82	Manual
2802	17.34	235.15	2680.15	536.61	-428.99	-627.92	2.33	760.47	235.66	Manual
2896	18.57	234.71	2769.57	557.32	-445.64	-651.64	1.32	789.45	235.63	Manual
2989	19.49	233.47	2857.49	579.31	-463.43	-676.19	1.08	819.76	235.57	Manual
3083	18.74	236.88	2946.31	601.21	-481.02	-701.44	1.43	850.53	235.56	Manual
3176	19.15	240.35	3034.27	621.37	-496.73	-727.21	1.29	880.67	235.66	Manual
3270	19.66	239.39	3122.93	641.73	-512.41	-754.22	0.64	911.81	235.81	Manual
3364	19.82	239.5	3211.41	662.59	-528.55	-781.56	0.17	943.5	235.93	Manual
3457	19.09	238.98	3299.1	683.04	-544.39	-808.17	0.81	974.43	236.04	Manual

3552	19.51	237.06	3388.76	704.26	-561.02	-834.8	0.8	1005.8	236.1	Manual
3646	18.53	239.62	3477.63	724.84	-577.11	-860.86	1.37	1036.41	236.16	Manual
3740	19.85	238.64	3566.4	745.29	-592.97	-887.38	1.45	1067.26	236.25	Manual
3834	18.78	238.88	3655.11	766	-609.1	-913.96	1.14	1098.33	236.32	Manual
3927	19.3	239.22	3743.02	786.1	-624.7	-939.98	0.57	1128.63	236.39	Manual
4021	19.02	238.77	3831.82	806.56	-640.59	-966.42	0.34	1159.45	236.46	Manual
4115	18.1	236.95	3920.93	826.83	-656.49	-991.76	1.16	1189.36	236.5	Manual
4209	18.8	238.94	4010.09	846.96	-672.27	-1016.97	1	1219.09	236.53	Manual
4303	19.41	243.29	4098.92	866.47	-687.11	-1043.9	1.65	1249.74	236.65	Manual
4397	20.19	239.3	4187.37	886.62	-702.41	-1071.81	1.66	1281.46	236.76	Manual
4490	20.01	238.81	4274.7	907.79	-718.85	-1099.22	0.27	1313.4	236.82	Manual
4584	20.35	238.13	4362.93	929.52	-735.8	-1126.86	0.44	1345.81	236.86	Manual
4679	19.26	238.29	4452.31	951.19	-752.76	-1154.21	1.15	1377.99	236.89	Manual
4772	19.47	238.01	4540.05	971.98	-769.04	-1180.41	0.25	1408.82	236.92	Manual
4866	19.66	238.5	4628.62	993.16	-785.6	-1207.18	0.27	1440.29	236.95	Manual
4960	19.47	239.03	4717.2	1014.13	-801.92	-1234.09	0.28	1471.75	236.98	Manual
5055	19.89	238.46	4806.65	1035.46	-818.52	-1261.44	0.49	1503.73	237.02	Manual
5148	19.48	239.48	4894.21	1056.24	-834.67	-1288.28	0.58	1535.04	237.06	Manual
5242	19.08	239.25	4982.94	1076.68	-850.49	-1314.99	0.43	1566.05	237.11	Manual
5335	19.22	237.96	5070.79	1097.06	-866.38	-1341.03	0.48	1596.55	237.14	Manual
5429	19.86	238.11	5159.38	1118.31	-883.02	-1367.7	0.68	1627.98	237.15	Manual
5522	19.25	238.5	5247.02	1139.23	-899.38	-1394.18	0.67	1659.11	237.17	Manual
5616	19.68	237.85	5335.64	1160.34	-915.9	-1420.8	0.51	1690.42	237.19	Manual
5710	19.3	236.95	5424.26	1181.78	-932.79	-1447.22	0.52	1721.79	237.2	Manual
5805	19.47	237.78	5513.87	1203.36	-949.8	-1473.77	0.34	1753.32	237.2	Manual
5899	19.58	237.83	5602.47	1224.67	-966.53	-1500.36	0.12	1784.73	237.21	Manual
5993	19.35	236.93	5691.09	1246.1	-983.42	-1526.74	0.4	1816.05	237.21	Manual
6086	19.83	237.75	5778.71	1267.44	-1000.24	-1552.99	0.59	1847.23	237.22	Manual
6180	19.67	236.9	5867.18	1289.19	-1017.39	-1579.73	0.35	1879	237.22	Manual
6274	19.21	236.3	5955.82	1310.9	-1034.61	-1605.85	0.53	1910.28	237.21	Manual
6367	19.93	238.17	6043.45	1332.26	-1051.46	-1632.05	1.03	1941.43	237.21	Manual
6461	19.58	238.24	6131.92	1353.65	-1068.2	-1659.05	0.37	1973.19	237.22	Manual
6554	18.64	238.18	6219.79	1374.15	-1084.24	-1684.93	1.01	2003.64	237.24	Manual
6649	19.13	237.57	6309.68	1394.99	-1100.59	-1710.97	0.56	2034.38	237.25	Manual
6741	19.14	236.42	6396.59	1415.77	-1117.02	-1736.26	0.41	2064.54	237.24	Manual
6835	18.5	233.7	6485.57	1437.38	-1134.37	-1761.12	1.16	2094.83	237.21	Manual
6929	20.28	237.32	6574.24	1459.41	-1152	-1786.85	2.28	2126.01	237.19	Manual
7023	20.14	236.83	6662.45	1481.75	-1169.65	-1814.11	0.23	2158.49	237.19	Manual

7117	19.15	234.4	6750.98	1504.05	-1187.48	-1840.19	1.37	2190.07	237.17	Manual
7211	19.51	235.81	6839.68	1526.22	-1205.27	-1865.71	0.63	2221.16	237.14	Manual
7305	19.59	237.39	6928.26	1548.04	-1222.59	-1891.97	0.57	2252.61	237.13	Manual
7399	18.57	237.08	7017.1	1569.11	-1239.21	-1917.81	1.09	2283.34	237.13	Manual
7493	19.38	237.44	7105.99	1590.07	-1255.74	-1943.52	0.87	2313.9	237.13	Manual
7587	23.78	219.84	7193.47	1617.29	-1278.72	-1968.84	8.28	2347.65	237	Manual
7680	26.63	203.2	7277.71	1654.03	-1312.33	-1989.1	8.18	2383	236.58	Manual
7775	30.09	195.98	7361.32	1698.54	-1354.82	-2004.05	5.12	2419.04	235.94	Manual
7868	38.59	192.69	7438.05	1750.83	-1405.62	-2016.86	9.35	2458.35	235.13	Manual
7962	45.09	195.48	7508.05	1813.36	-1466.37	-2032.2	7.19	2506.01	234.19	Manual
8056	54.87	194.8	7568.42	1885.03	-1535.78	-2050.95	10.42	2562.23	233.17	Manual
8150	63.28	194.06	7616.69	1965.41	-1613.81	-2071.01	8.97	2625.54	232.07	Manual
8243	68.56	193.34	7654.62	2050.16	-1696.27	-2091.1	5.72	2692.59	230.95	Manual
8338	75.43	187.54	7683.99	2140.41	-1785.04	-2107.36	9.27	2761.77	229.73	Manual
8431	82.31	182.07	7701.95	2231.11	-1875.89	-2114.95	9.38	2827	228.43	Manual
8526	88.74	179.97	7709.36	2324.46	-1970.53	-2116.63	7.12	2891.9	227.05	Manual
8621	88.8	181.54	7711.39	2418.05	-2065.49	-2117.88	1.65	2958.32	225.72	Manual
8714	89.52	181.22	7712.76	2509.85	-2158.46	-2120.12	0.85	3025.53	224.49	Manual
8808	91.06	180.15	7712.28	2602.46	-2252.44	-2121.24	1.99	3094.05	223.28	Manual
8902	91.42	180.58	7710.25	2694.96	-2346.42	-2121.84	0.6	3163.52	222.12	Manual
8996	91.23	180.63	7708.07	2787.53	-2440.39	-2122.83	0.21	3234.49	221.02	Manual
9089	91.29	180.45	7706.03	2879.09	-2533.36	-2123.71	0.2	3305.76	219.97	Manual
9183	91.21	181.16	7703.98	2971.71	-2627.33	-2125.03	0.76	3379.14	218.97	Manual
9277	91.32	180.83	7701.9	3064.39	-2721.29	-2126.66	0.37	3453.71	218.01	Manual
9371	91.03	181.3	7699.98	3157.09	-2815.26	-2128.41	0.59	3529.28	217.09	Manual
9465	91.21	179.63	7698.14	3249.62	-2909.23	-2129.17	1.79	3605.13	216.2	Manual
9559	91.33	179.09	7696.06	3341.81	-3003.2	-2128.12	0.59	3680.78	215.32	Manual
9654	91.4	178.21	7693.79	3434.74	-3098.15	-2125.88	0.93	3757.38	214.46	Manual
9748	91.37	178.23	7691.52	3526.55	-3192.07	-2122.96	0.04	3833.58	213.63	Manual
9842	91.35	178.47	7689.29	3618.41	-3286.01	-2120.26	0.26	3910.67	212.83	Manual
9936	90.29	177.42	7687.94	3710.13	-3379.94	-2116.89	1.59	3988.13	212.06	Manual
10030	89.23	181.03	7688.34	3802.29	-3473.91	-2115.62	4	4067.42	211.34	Manual
10124	88.97	182.41	7689.81	3895.16	-3567.85	-2118.44	1.49	4149.38	210.7	Manual
10218	89.54	181.31	7691.04	3988.08	-3661.79	-2121.49	1.32	4231.96	210.09	Manual
10313	90.03	180.84	7691.39	4081.78	-3756.78	-2123.27	0.71	4315.28	209.47	Manual
10407	90.03	180.92	7691.34	4174.45	-3850.77	-2124.71	0.09	4398.05	208.89	Manual
10501	90.02	181.76	7691.3	4267.24	-3944.74	-2126.91	0.89	4481.6	208.33	Manual
10596	90.09	181.25	7691.21	4361.06	-4039.71	-2129.41	0.54	4566.57	207.79	Manual
10690	89.93	181.18	7691.2	4453.82	-4133.68	-2131.4	0.19	4650.83	207.28	Manual

10784	90.01	180.83	7691.24	4546.52	-4227.67	-2133.05	0.38	4735.3	206.77	Manual
10879	89.39	181.81	7691.74	4640.29	-4322.64	-2135.24	1.22	4821.25	206.29	Manual
10973	89.39	180.81	7692.74	4733.07	-4416.61	-2137.39	1.06	4906.62	205.82	Manual
11067	89.14	179.99	7693.95	4825.59	-4510.6	-2138.04	0.91	4991.67	205.36	Manual
11162	89.29	178.16	7695.25	4918.68	-4605.57	-2136.51	1.93	5077.01	204.89	Manual
11256	88.95	177.51	7696.69	5010.37	-4699.5	-2132.96	0.78	5160.89	204.41	Manual
11350	89.45	178.22	7698.01	5102.07	-4793.42	-2129.46	0.92	5245.14	203.95	Manual
11444	89.2	178.64	7699.11	5193.97	-4887.38	-2126.88	0.52	5330.11	203.52	Manual
11539	89.72	178.62	7700.01	5286.92	-4982.35	-2124.61	0.55	5416.43	203.09	Manual
11633	89.86	178.85	7700.35	5378.93	-5076.32	-2122.54	0.29	5502.2	202.69	Manual
11727	90.69	178.12	7699.9	5470.86	-5170.29	-2120.05	1.18	5588.07	202.3	Manual
11821	90.52	178.99	7698.91	5562.8	-5264.25	-2117.68	0.94	5674.23	201.91	Manual
11914	90.73	178.69	7697.9	5653.86	-5357.23	-2115.8	0.39	5759.9	201.55	Manual
12008	90.68	179	7696.74	5745.9	-5451.2	-2113.9	0.33	5846.72	201.2	Manual
12102	90.41	180.22	7695.84	5838.19	-5545.19	-2113.26	1.33	5934.23	200.86	Manual
12196	90.61	178.24	7695.01	5930.36	-5639.18	-2112	2.12	6021.7	200.53	Manual
12289	90.8	178.92	7693.86	6021.33	-5732.14	-2109.7	0.76	6108.05	200.21	Manual
12384	91.39	178.33	7692.05	6114.27	-5827.09	-2107.42	0.88	6196.47	199.88	Manual
12479	91.37	177.18	7689.76	6206.88	-5921.99	-2103.7	1.21	6284.55	199.56	Manual
12573	91.21	177.74	7687.64	6298.42	-6015.88	-2099.53	0.62	6371.72	199.24	Manual
12666	89.9	178.24	7686.74	6389.19	-6108.81	-2096.27	1.51	6458.48	198.94	Manual
12760	89.93	180.62	7686.88	6481.43	-6202.8	-2095.34	2.53	6547.15	198.67	Manual
12854	89.88	180.95	7687.04	6574.07	-6296.79	-2096.62	0.36	6636.67	198.42	Manual
12948	90.02	181.59	7687.12	6666.84	-6390.77	-2098.71	0.7	6726.55	198.18	Manual
13042	89.89	180.18	7687.19	6759.5	-6484.75	-2100.16	1.51	6816.35	197.95	Manual
13136	89.58	181.28	7687.63	6852.13	-6578.74	-2101.36	1.22	6906.2	197.71	Manual
13229	89.62	181.64	7688.28	6943.96	-6671.71	-2103.73	0.39	6995.53	197.5	Manual
13323	90.1	179.64	7688.51	7036.55	-6765.7	-2104.78	2.19	7085.53	197.28	Manual
13418	90.04	179.75	7688.39	7129.86	-6860.7	-2104.27	0.13	7176.15	197.05	Manual
13512	89.66	180.7	7688.64	7222.34	-6954.7	-2104.64	1.09	7266.17	196.84	Manual
13606	90.35	180.66	7688.63	7314.95	-7048.69	-2105.75	0.74	7356.51	196.63	Manual
13699	90.33	180.94	7688.08	7406.61	-7141.68	-2107.05	0.3	7446.02	196.44	Manual
13794	90.28	180.55	7687.57	7500.22	-7236.67	-2108.29	0.41	7537.52	196.24	Manual
13888	90.45	180.02	7686.97	7592.72	-7330.66	-2108.76	0.59	7627.94	196.05	Manual
13982	90.36	179.8	7686.31	7685.1	-7424.66	-2108.61	0.25	7718.28	195.85	Manual
14076	89.68	179.7	7686.28	7777.44	-7518.66	-2108.2	0.73	7808.63	195.66	Manual
14169	89.49	179.9	7686.95	7868.81	-7611.66	-2107.87	0.3	7898.13	195.48	Manual
14263	89.73	180.02	7687.59	7961.21	-7705.66	-2107.81	0.29	7988.74	195.3	Manual

14355	89.53	180.05	7688.18	8051.66	-7797.65	-2107.86	0.22	8077.53	195.13	Manual
14448	89.58	180.34	7688.91	8143.15	-7890.65	-2108.18	0.32	8167.42	194.96	Manual
14541	89.39	181.68	7689.74	8234.86	-7983.63	-2109.82	1.46	8257.7	194.8	Manual
14635	89.63	181.21	7690.55	8327.67	-8077.6	-2112.19	0.56	8349.19	194.65	Manual
14729	89.69	181.49	7691.1	8420.46	-8171.57	-2114.4	0.3	8440.69	194.51	Manual
14822	89.69	179.73	7691.61	8512.07	-8264.56	-2115.39	1.89	8530.99	194.36	Manual
14916	90.09	178.72	7691.79	8604.24	-8358.55	-2114.12	1.16	8621.76	194.19	Manual
15010	89.8	179.22	7691.88	8696.33	-8452.53	-2112.43	0.61	8712.5	194.03	Manual
15103	89.65	180.77	7692.32	8787.75	-8545.53	-2112.42	1.67	8802.75	193.88	Manual
15197	89.91	179.37	7692.68	8880.18	-8639.52	-2112.54	1.51	8894.05	193.74	Manual
15292	89.83	179.36	7692.9	8973.38	-8734.52	-2111.49	0.08	8986.11	193.59	Manual
15386	89.83	179.34	7693.18	9065.59	-8828.51	-2110.42	0.02	9077.25	193.44	Manual
15480	89.64	180.07	7693.61	9157.92	-8922.51	-2109.94	0.8	9168.59	193.3	Manual
15574	89.72	180.04	7694.14	9250.35	-9016.51	-2110.03	0.09	9260.11	193.17	Manual
15668	89.82	179.09	7694.52	9342.63	-9110.5	-2109.31	1.02	9351.5	193.04	Manual
15762	89.65	179.86	7694.95	9434.88	-9204.5	-2108.45	0.84	9442.9	192.9	Manual
15856	89.65	179.39	7695.53	9527.17	-9298.49	-2107.84	0.5	9534.41	192.77	Manual
15950	89.82	179.25	7695.96	9619.38	-9392.49	-2106.72	0.23	9625.85	192.64	Manual
16043	90.19	179.54	7695.95	9710.62	-9485.48	-2105.74	0.51	9716.4	192.52	Manual
16232	89.25	179.06	7696.88	9895.99	-9674.46	-2103.43	0.56	9900.49	192.27	Manual
16325	88.92	180.28	7698.36	9987.31	-9767.45	-2102.89	1.36	9991.25	192.15	Manual
16419	89.86	178.32	7699.36	10079.5	-9861.43	-2101.75	2.31	10082.91	192.03	Manual
16606	89.97	178.86	7699.64	10262.44	-10048.37	-2097.14	0.29	10264.88	191.79	Manual
16701	89.82	179.92	7699.81	10355.65	-10143.36	-2096.13	1.13	10357.68	191.68	Manual
16794	89.62	179.99	7700.27	10447.06	-10236.36	-2096.06	0.23	10448.76	191.57	Manual
16888	89.88	179.7	7700.68	10539.43	-10330.36	-2095.81	0.41	10540.81	191.47	Manual
16982	89.66	179.82	7701.06	10631.77	-10424.36	-2095.41	0.27	10632.87	191.37	Manual
17076	89.66	179.36	7701.61	10724.06	-10518.35	-2094.74	0.49	10724.91	191.26	Manual
17170	89.76	179.3	7702.09	10816.26	-10612.35	-2093.64	0.12	10816.9	191.16	Manual
17359	89.71	179.84	7702.96	11001.81	-10801.34	-2092.22	0.29	11002.11	190.96	Manual
17452	89.67	179.6	7703.47	11093.15	-10894.34	-2091.77	0.26	11093.33	190.87	Manual
17547	89.84	179.87	7703.87	11186.47	-10989.33	-2091.33	0.34	11186.56	190.77	Manual
17641	90.16	179.1	7703.87	11278.72	-11083.33	-2090.48	0.89	11278.76	190.68	Manual
17735	89.88	178.89	7703.84	11370.82	-11177.32	-2088.83	0.37	11370.82	190.59	Manual
17814	89.79	179.06	7704.07	11448.22	-11256.3	-2087.42	0.24	11448.22	190.51	Manual
17844	89.79	179.06	7704.18	11477.61	-11286.3	-2086.93	0	11477.62	190.48	Manual

Company: PDC Energy Inc.

Well: Ottesen 22C

Xbolt GAMMA RAY

1in/100ft Measured Depth
Final Print
Recorded Mode

Field Name: Wattenberg
Country Name: United States
State Name: Colorado
County Name: Weld

