



GAMMA RAY C.C.L.
CEMENT BOND V.D.L.

Company NOBLE ENERGY PRODUCTION, INC		Company NOBLE ENERGY PRODUCTION, INC	
Well VOLKENS 31-22	Field WATTENBERG	Well VOLKENS 31-22	Field WATTENBERG
County WELD	State COLO.	County WELD	State COLO.
Location: 660' FNL & 1980' FEL NWNNE		API #: 05-123-11031	
Permanent Datum	GL	Elevation	4655
Log Measured From	KB	Other Services	KB, 4663 D.F. GL, 4655
Drilling Measured From	KB		
Date	28-FEB-08		
Run Number	ONE		
Depth Driller	6875		
Depth Logger	5390		
Bottom Logged Interval	5389		
Top Log Interval	SURFACE		
Open Hole Size	WATER		
Type Fluid			
Density / Viscosity			
Max. Recorded Temp.	198		
Estimated Cement Top			
Time Well Ready			
Time Logger on Bottom			
Equipment Number	T4 SRTTOOL		
Location	STERLING		
Recorded By	HOBBS		
Witnessed By	JOE BRNAK		
Borehole Record		Tubing Record	
Run Number	Bit	From	To
	Size	Weight	From
			To
Casing Record	Size	Wd/Ft	Top
Surface String			Bottom
Prod. String			
Production String	4.5"		

<< Fold Here >>

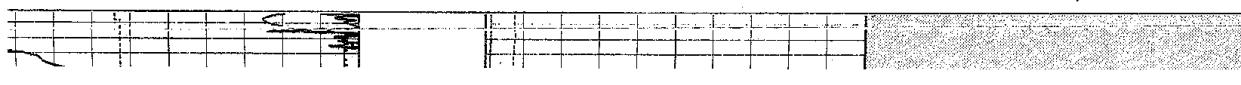
All interpretations are opinions based on inferences from electrical or other measurements and we cannot and do not guarantee the accuracy or correctness of any interpretation, and we shall not, except in the case of gross or willful negligence on our part, be liable or responsible for any loss, ts, damages, or expenses incurred or sustained by anyone resulting from any interpretation made by any of our officers, agents or employees. These interpretations are also subject to our general terms and conditions set out in our current Price Schedule.

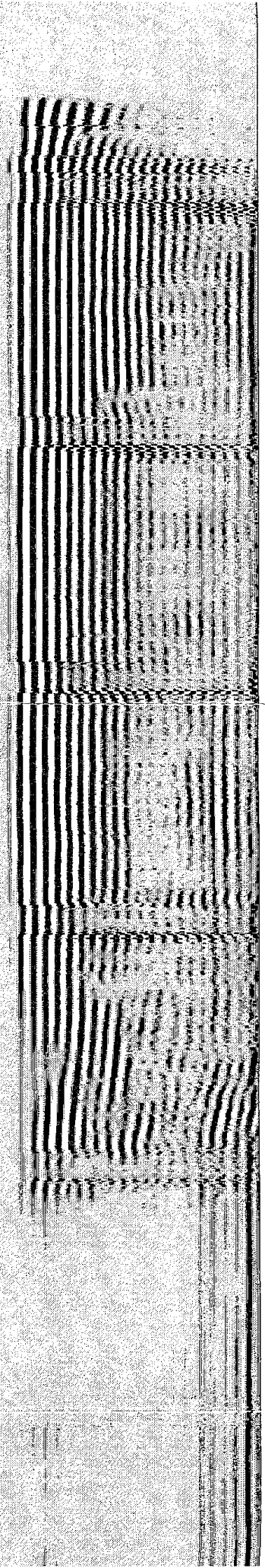
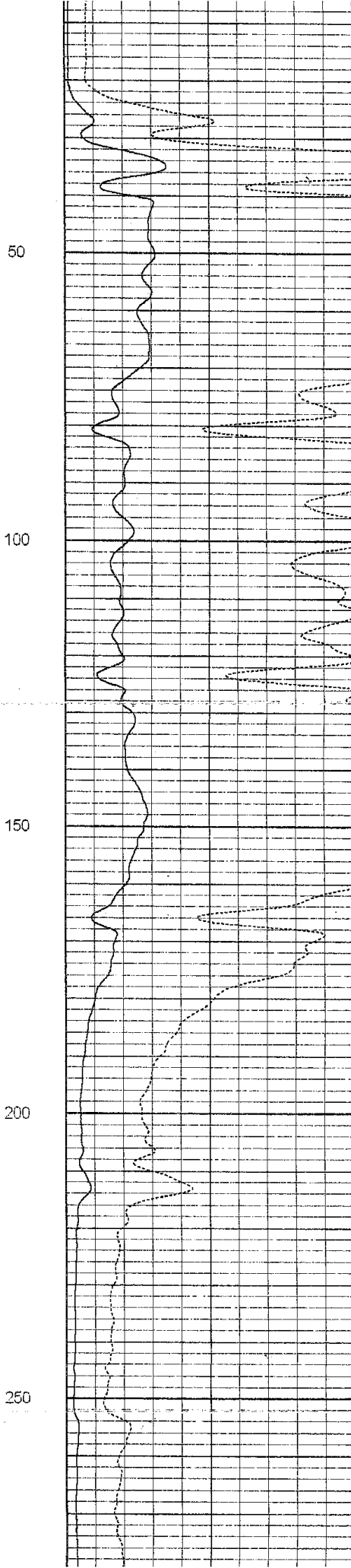
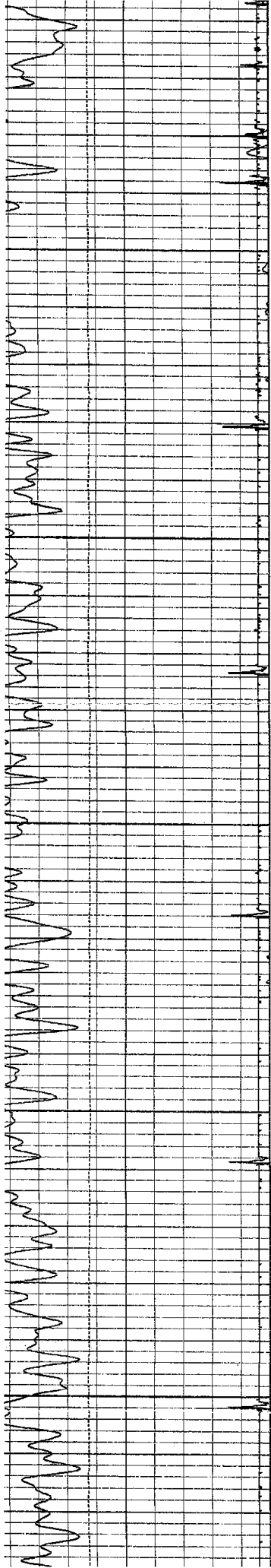
Comments

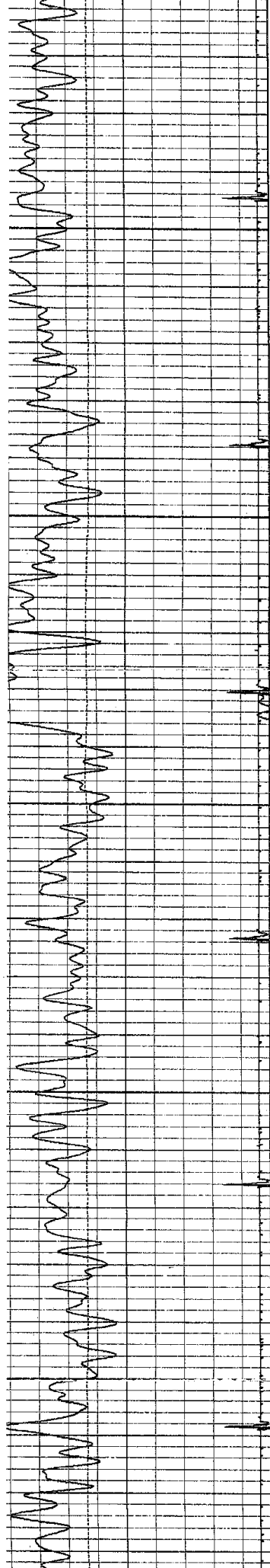
THANK YOU FOR USING NUEX WIRELINE.
CORRECTED UP HOLE 1' TO SCHLUMBERGER
CN-FD LOG DATED 15-FEB-83.

Database File: volkenslog.db
Dataset Pathname: pass3
Presentation Format: nuexcbf
Dataset Creation: Tue Feb 26 07:56:24 2008 by Log Std Casedhole 07122
Charted by: Depth in Feet scaled 1:240

LSPD (ft/min)	-300	0	Amplified Amplitude (mV)	20	200	V D L	1200
CCL	-0.3	0	Amplitude (mV)	100			
Gamma Ray (GAPI)	130						







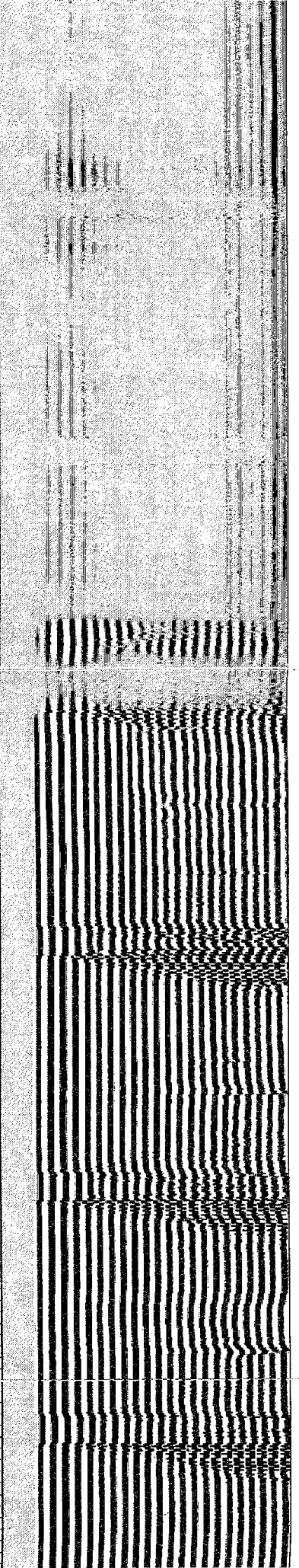
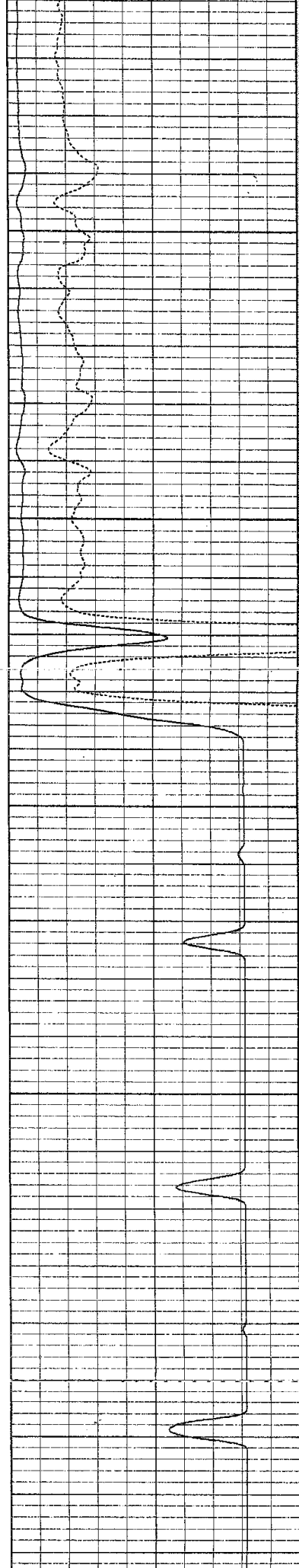
300

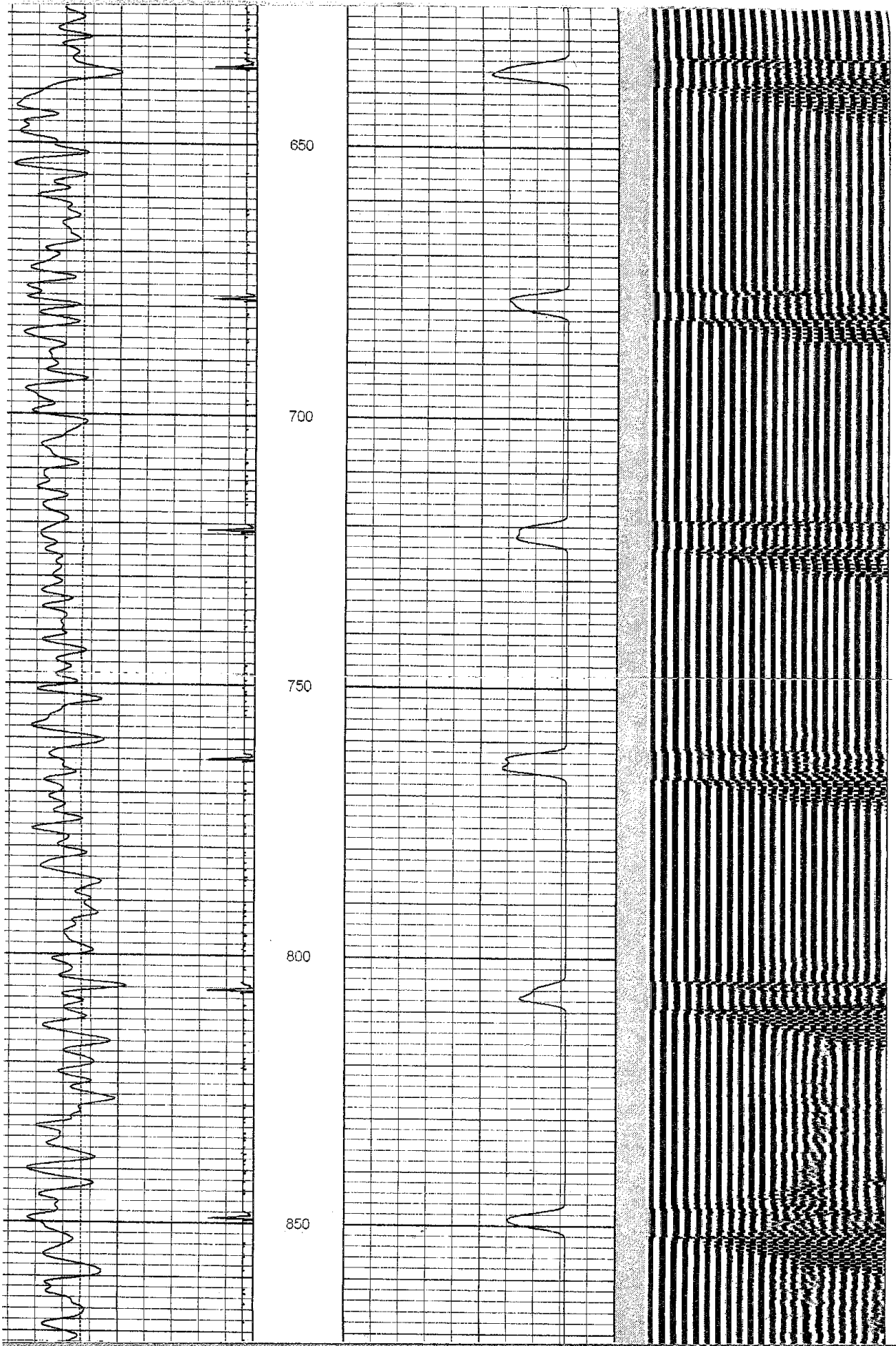
350

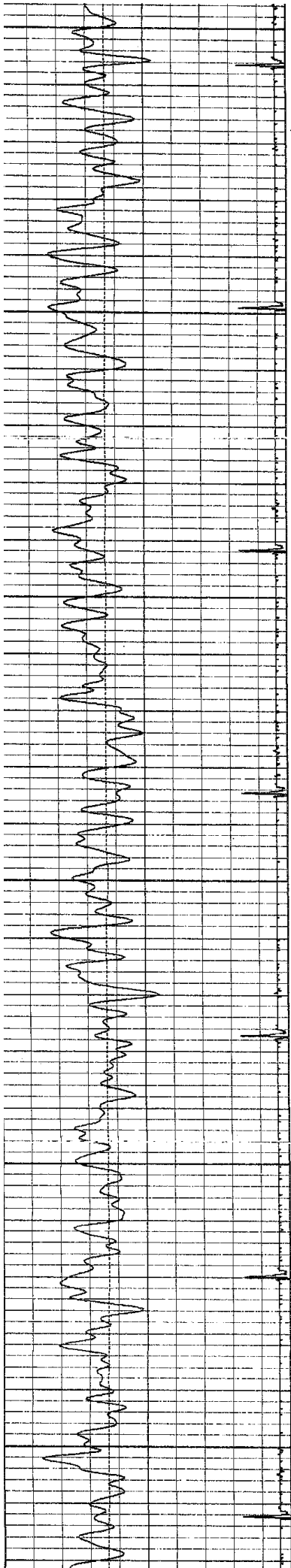
400

450

500







800

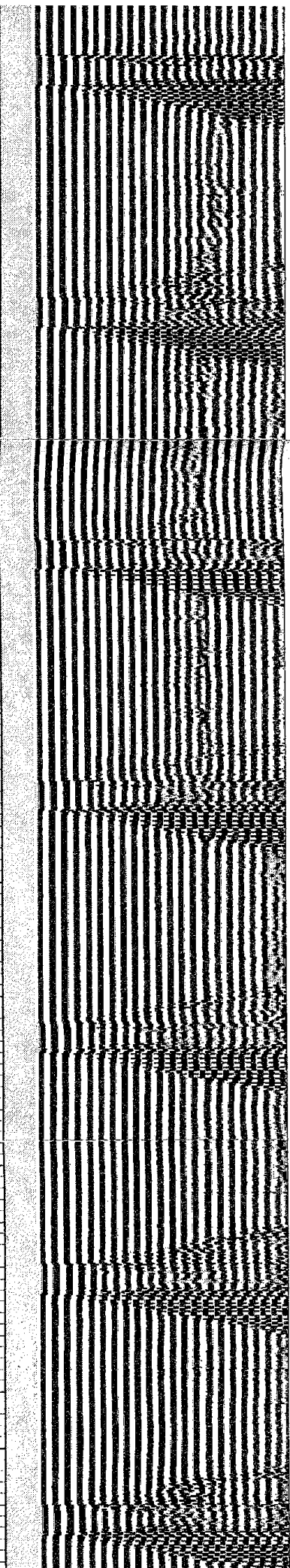
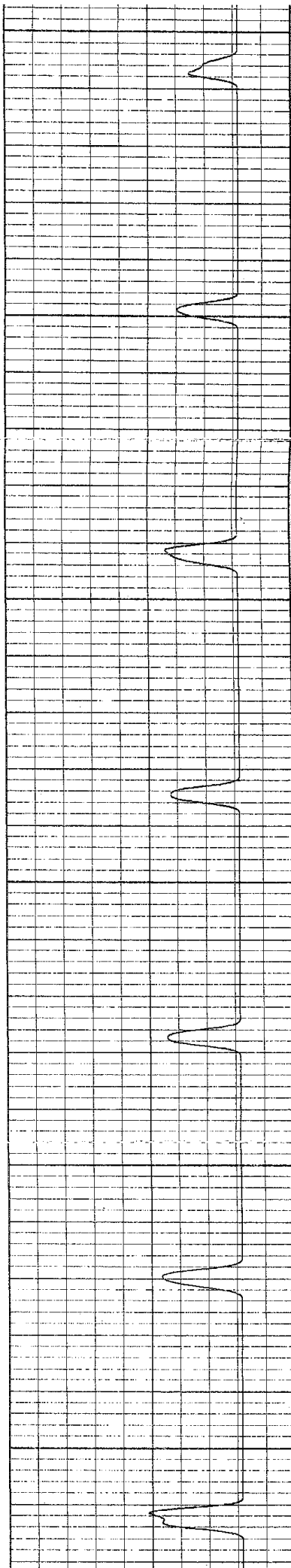
850

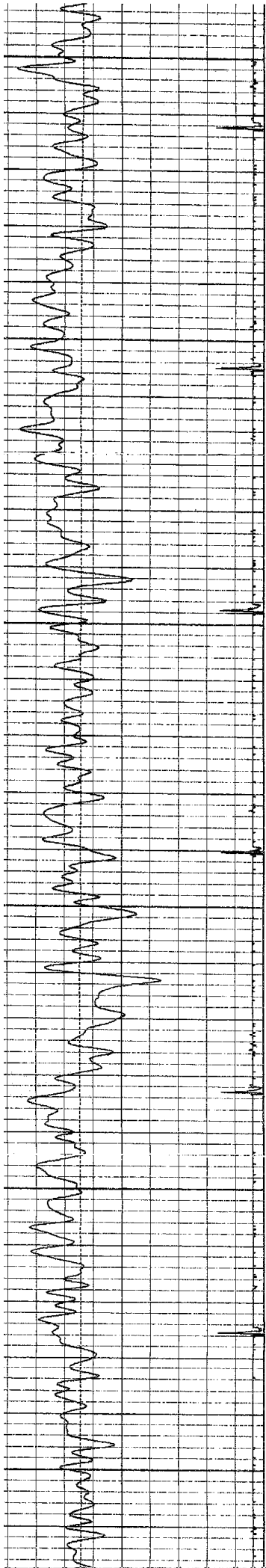
900

950

1000

1050





1050

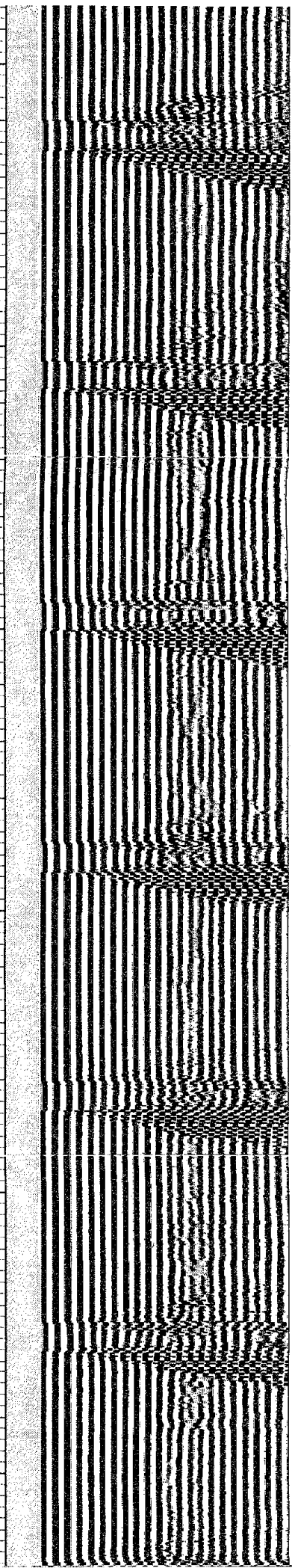
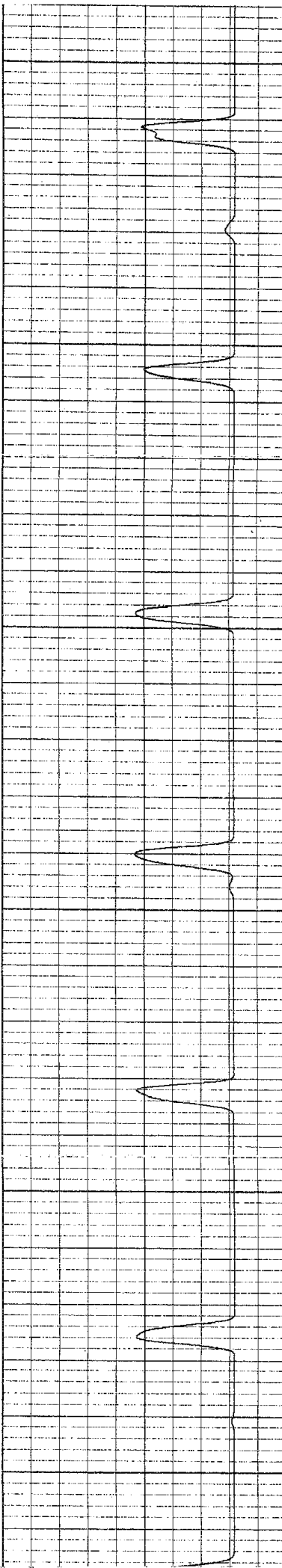
1100

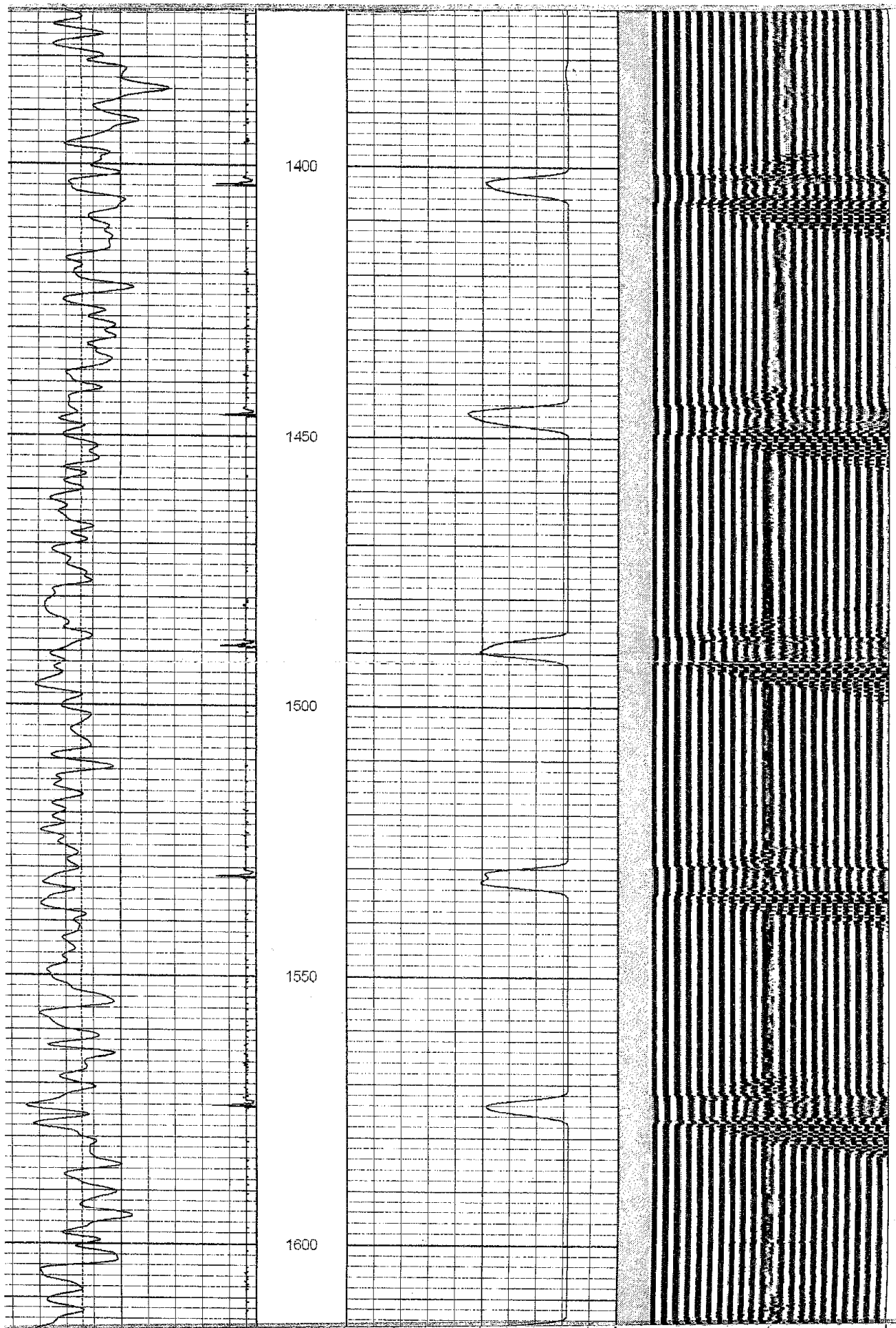
1150

1200

1250

1300





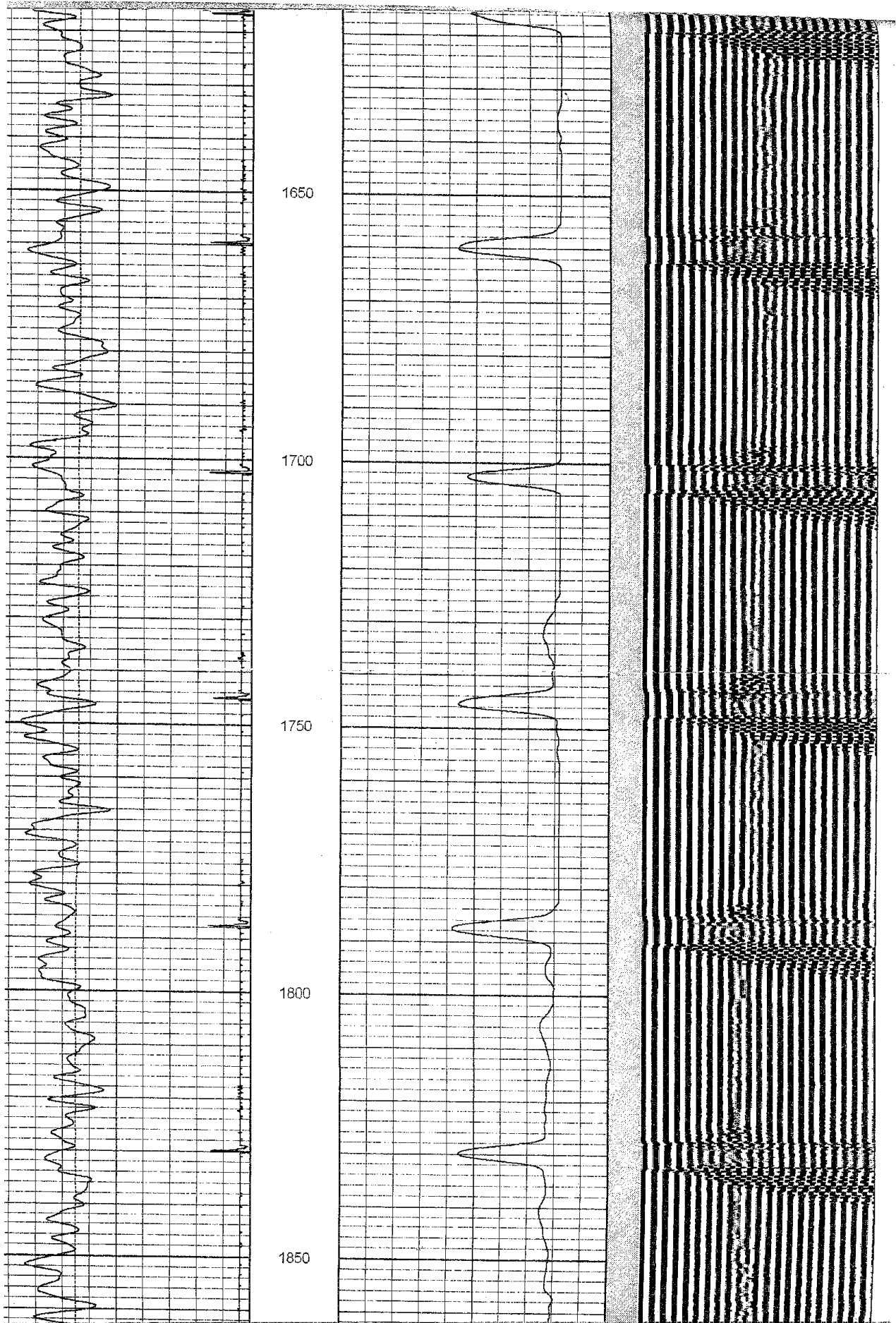
LSPD (ft/min) -300

CCL -0.3

0 Amplified Amplitude (mV) 20 200

0 Amplitude (mV) 100

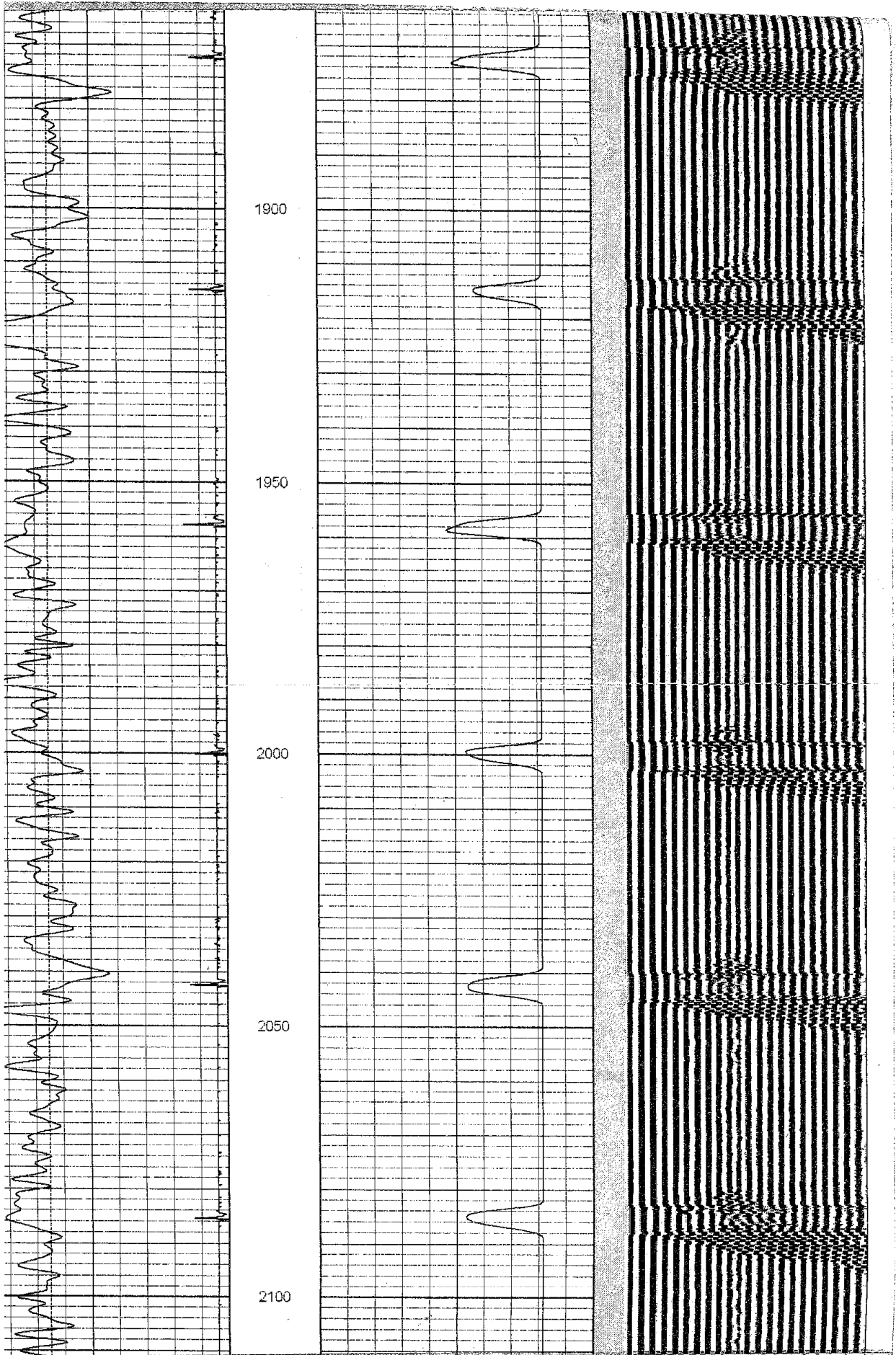
V D L 1200



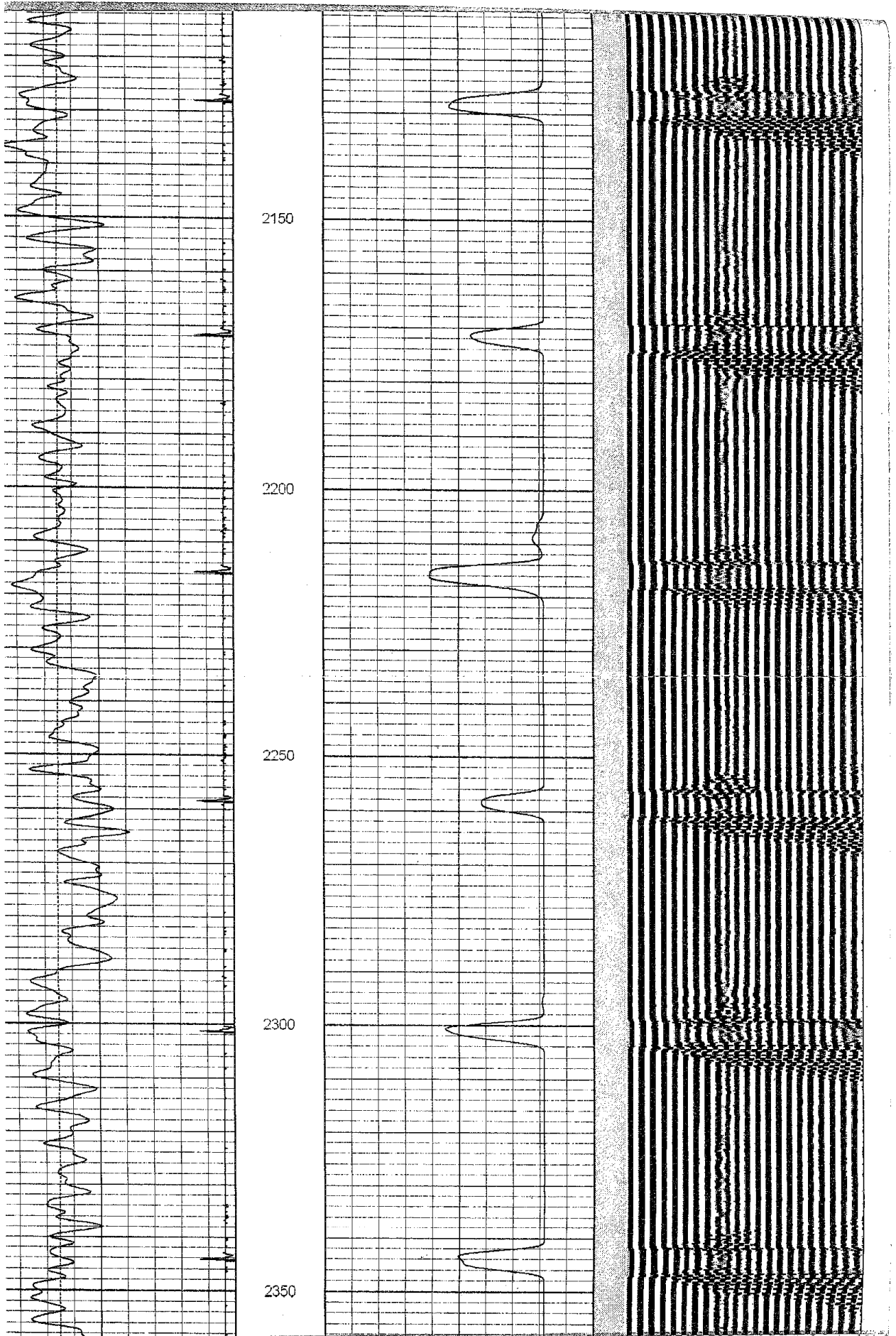
LSPD (ft/min)	-300
CCL	-0.3

0	Amplified Amplitude (mV)	20	200
0	Amplitude (mV)	100	

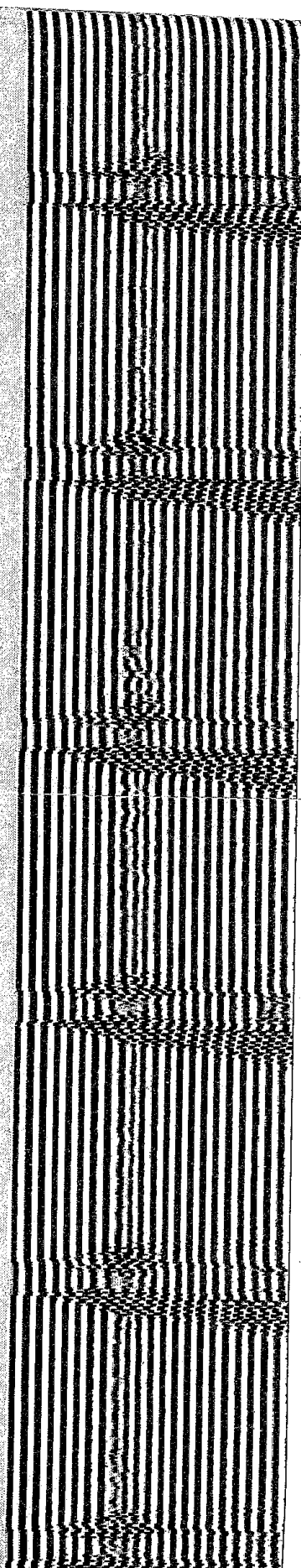
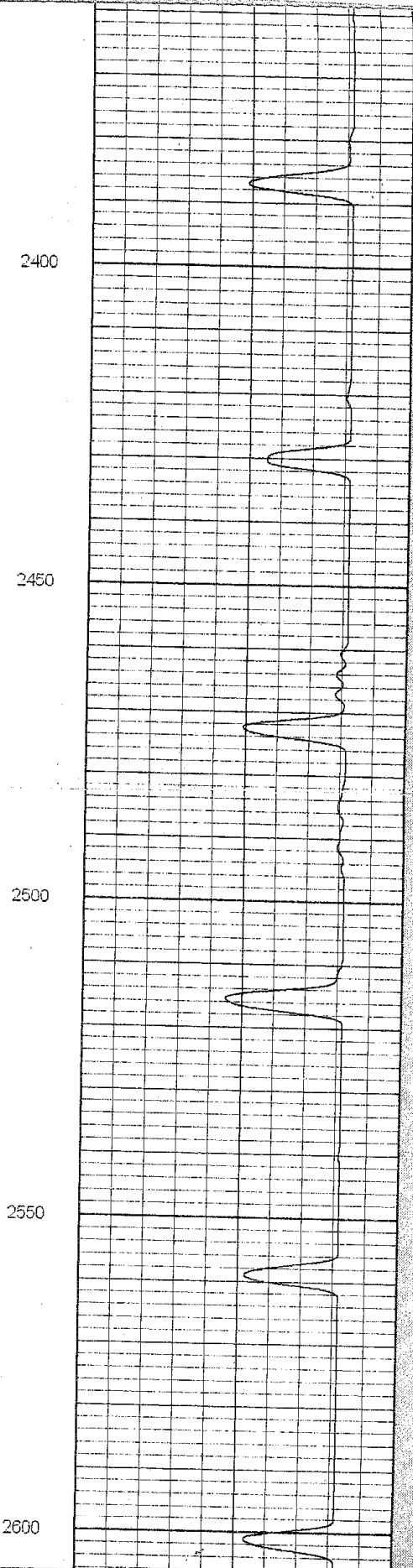
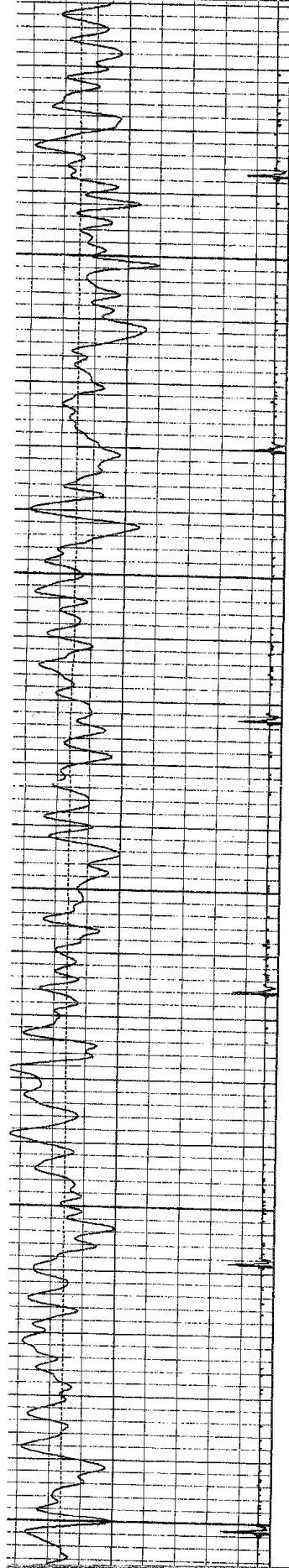
VDL 1200



LSPD (ft/min)	-300	0	Amplified Amplitude (mV)	20	200	V D L	1200
CCL	-0.3	0	Amplitude (mV)	100			
Gamma Ray (GAPI)	130						



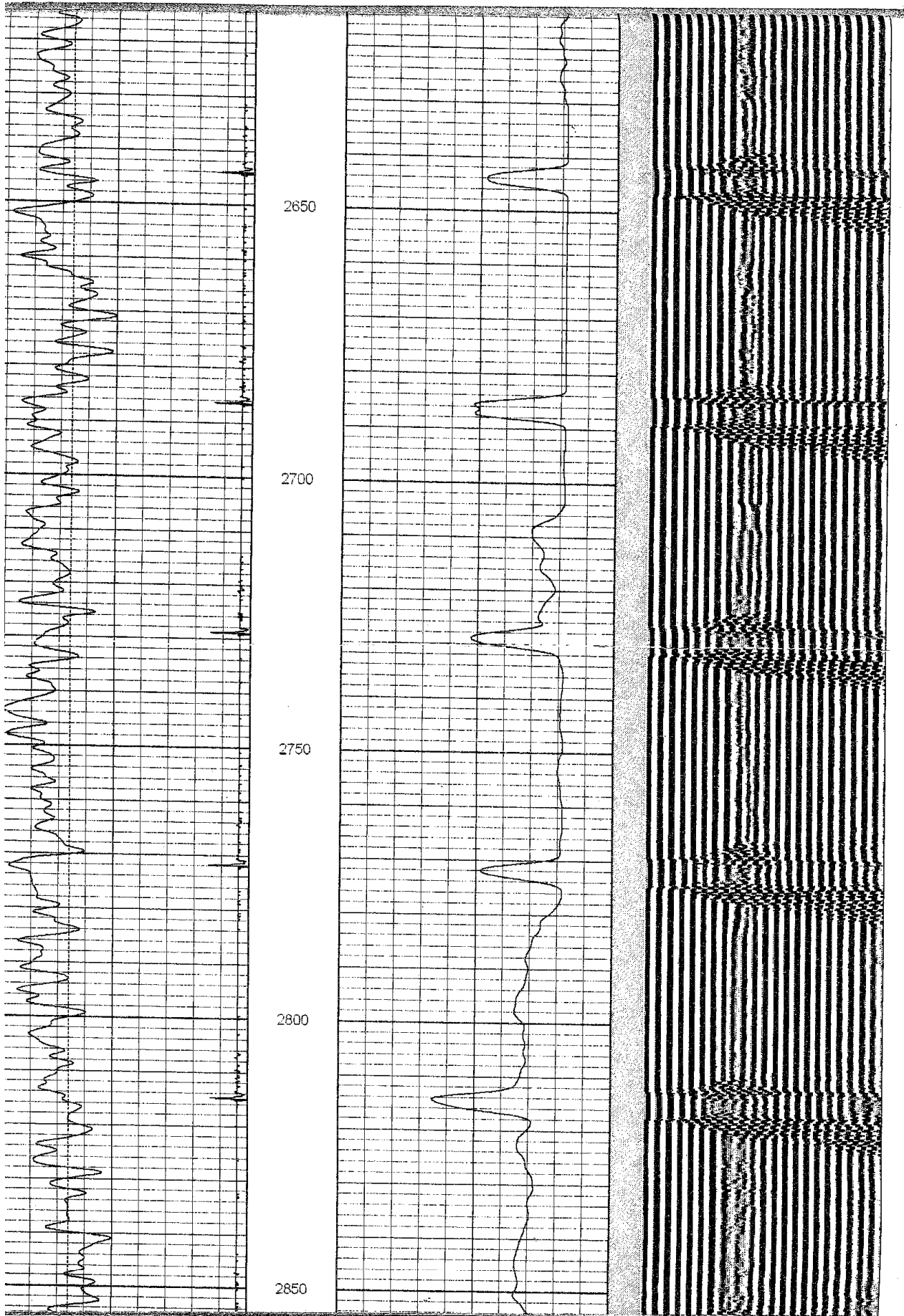
LSPD (ft/min)	-300	0	Amplified Amplitude (mV)	20	200	VDL	1200
CCL	-0.3	0	Amplitude (mV)	100			



LSPD (ft/min)	-300
CCL	-0.3
Gamma Ray (GAPI)	130

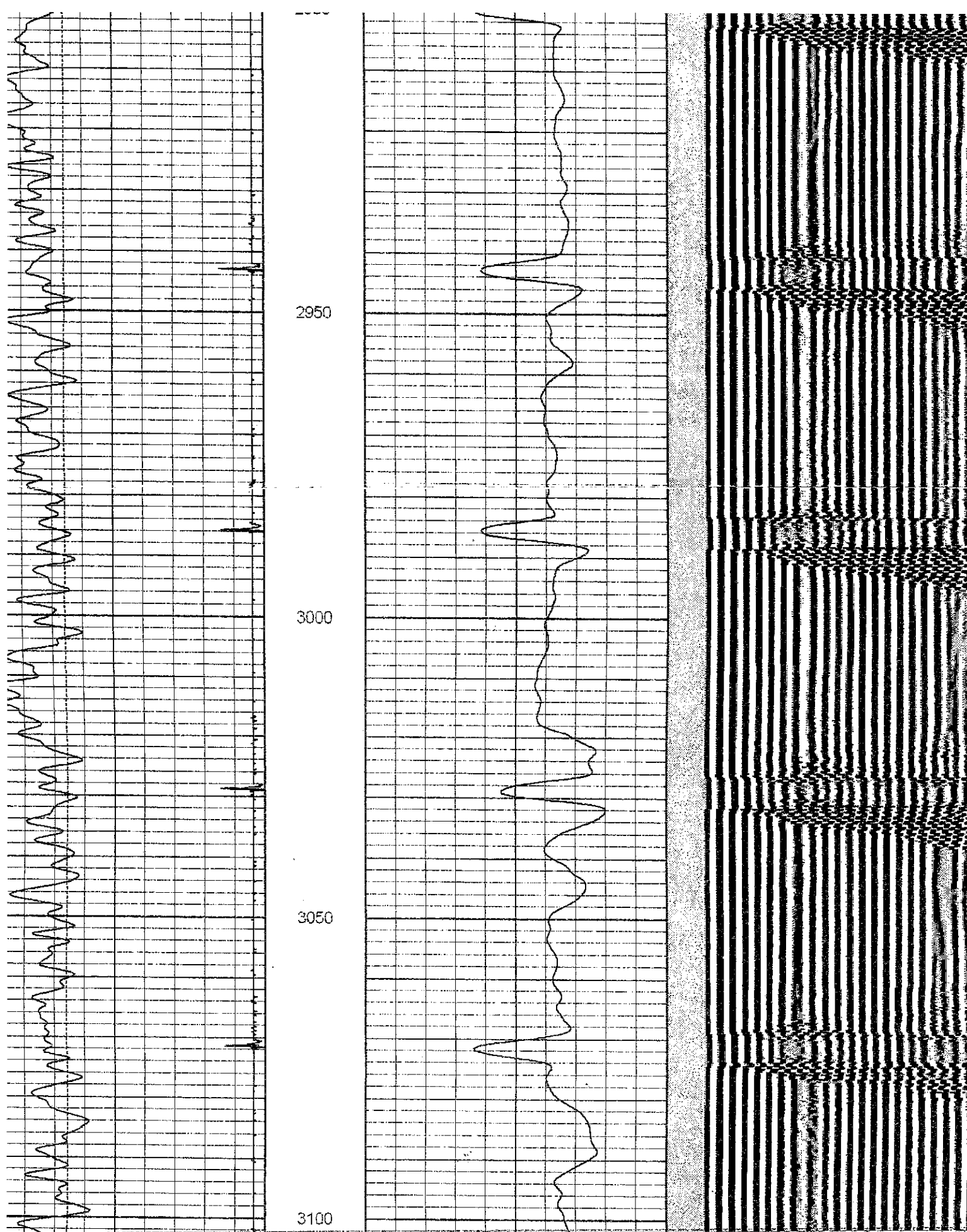
0	Amplified Amplitude (mV)	20	200
0	Amplitude (mV)	100	

V D L 1200



LSPD (ft/min)	-300
CCL	-0.3
Gamma Ray (GAPI)	130

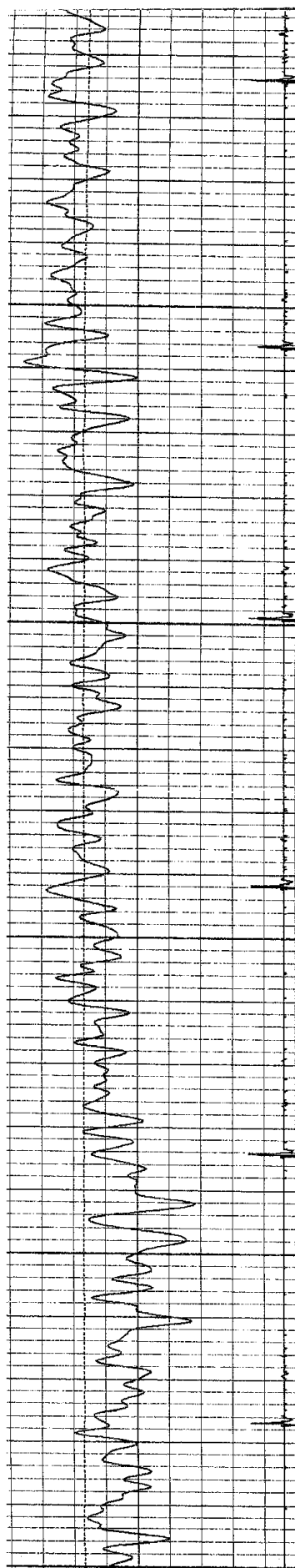
0	Amplified Amplitude (mV)	20	200	V D L	1200
0	Amplitude (mV)	100			



LSPD (ft/min) -300
 CCL -0.3
 Gamma Ray (GAPI) 420

0 Amplified Amplitude (mV) 20
 0 Amplitude (mV) 100

V D L 1200



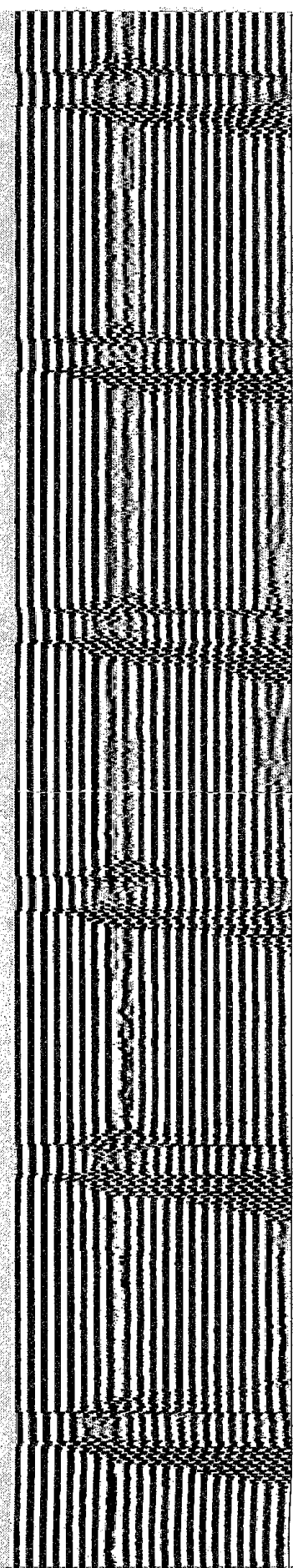
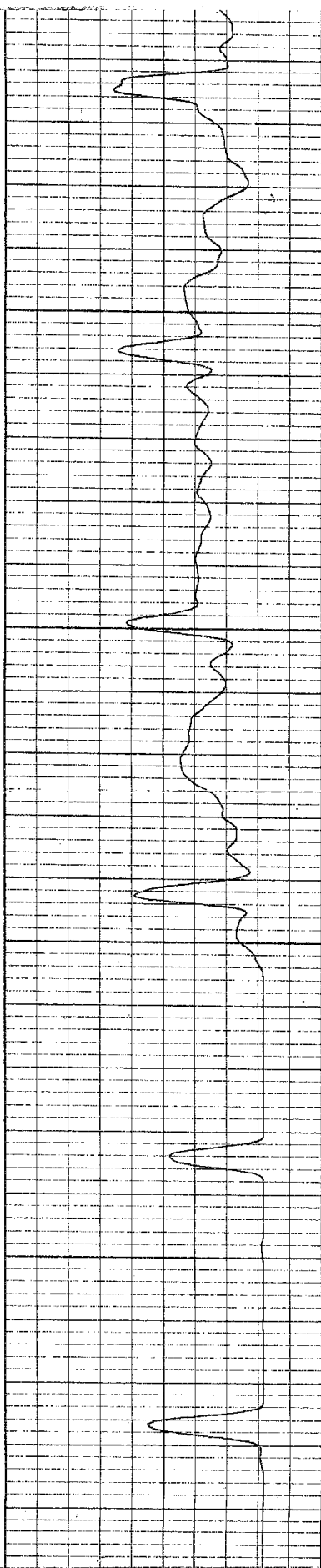
3150

3200

3250

3300

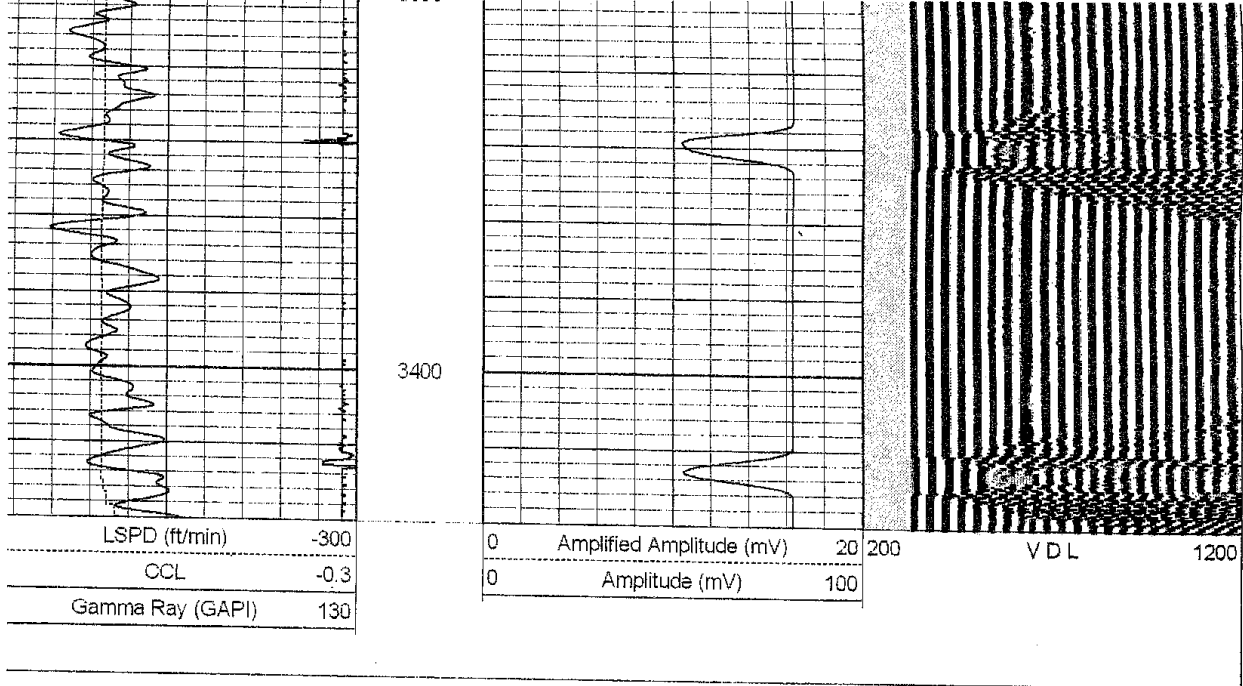
3350



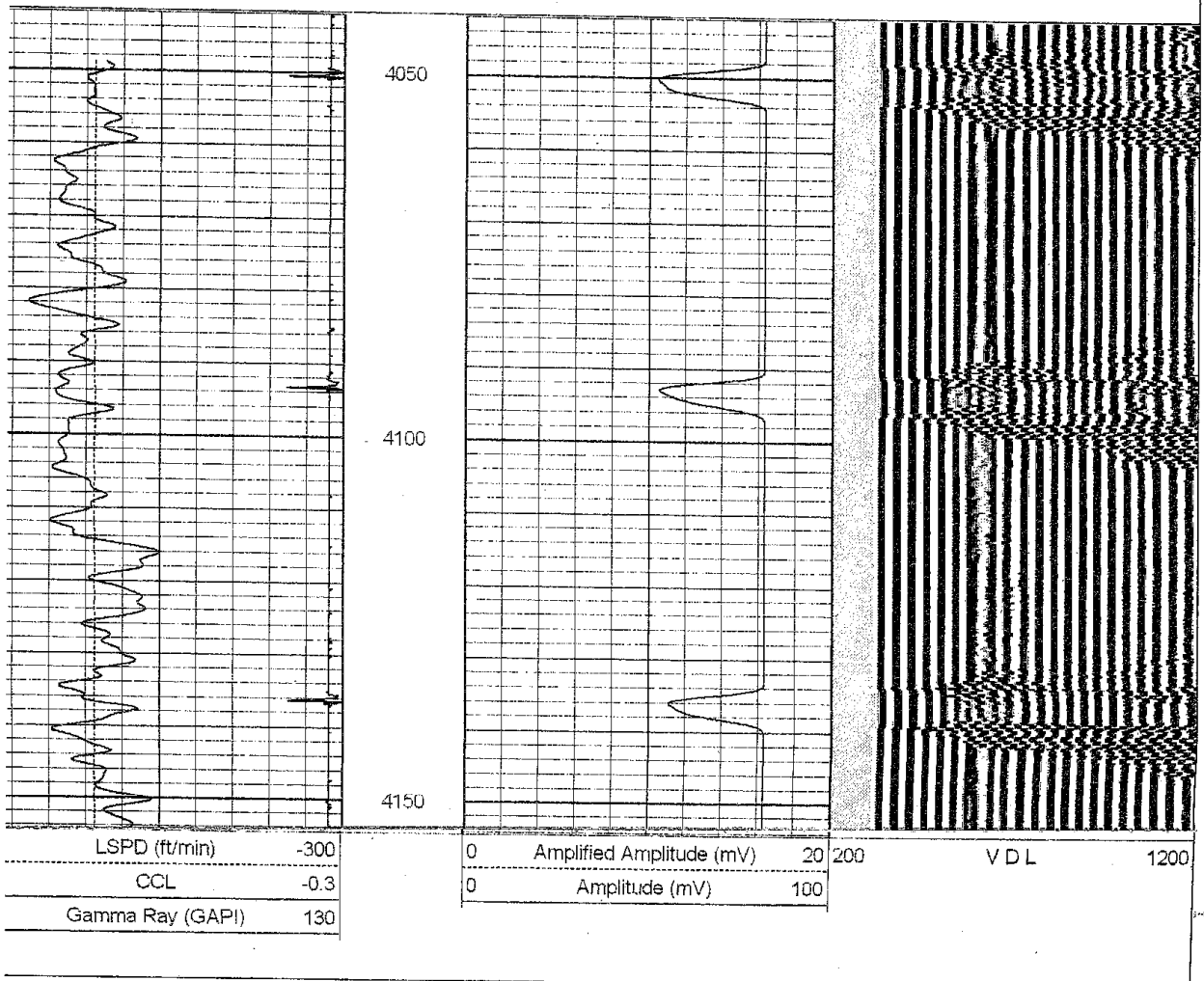
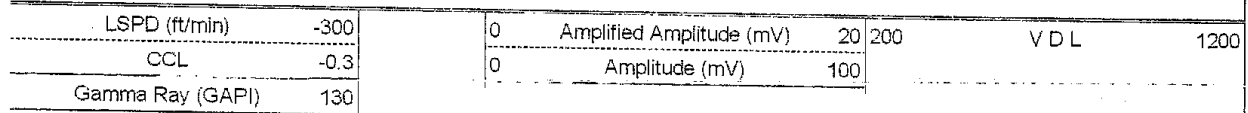
LSPD (ft/min)	-300
CCL	-0.3
Gamra Ray (GAPI)	130

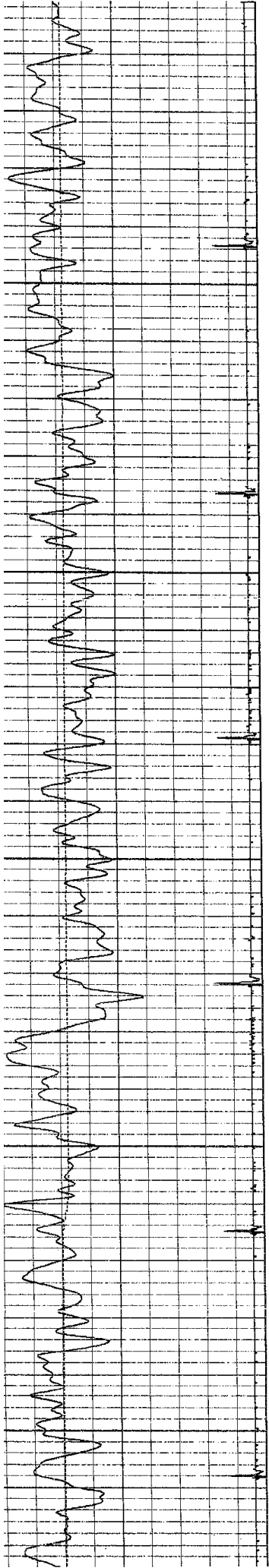
0	Amplified Amplitude (mV)	20
0	Amplitude (mV)	100

200 VDL 1200



Database File: volkenslog.db
 Dataset Pathname: pass2
 Presentation Format: nuexcb1
 Dataset Creation: Tue Feb 26 07:37:53 2008 by Log Std Casedhole 07122
 Charted by: Depth in Feet scaled 1:240





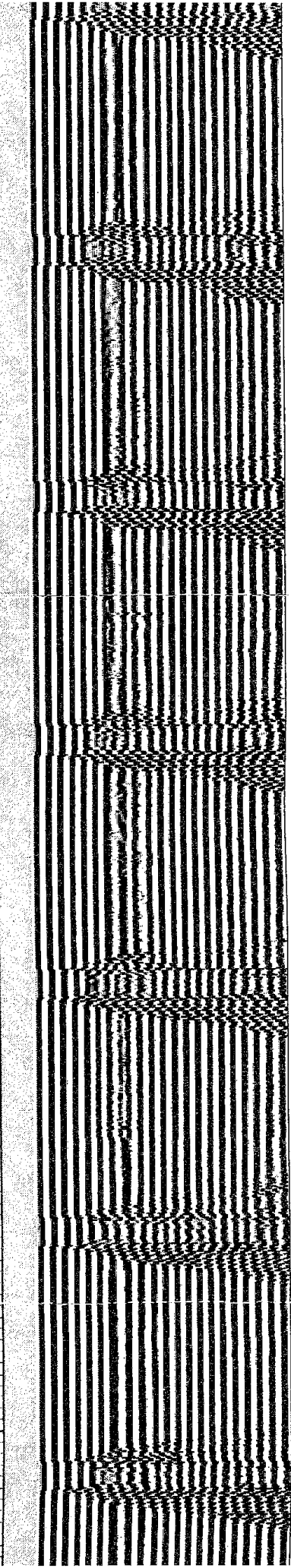
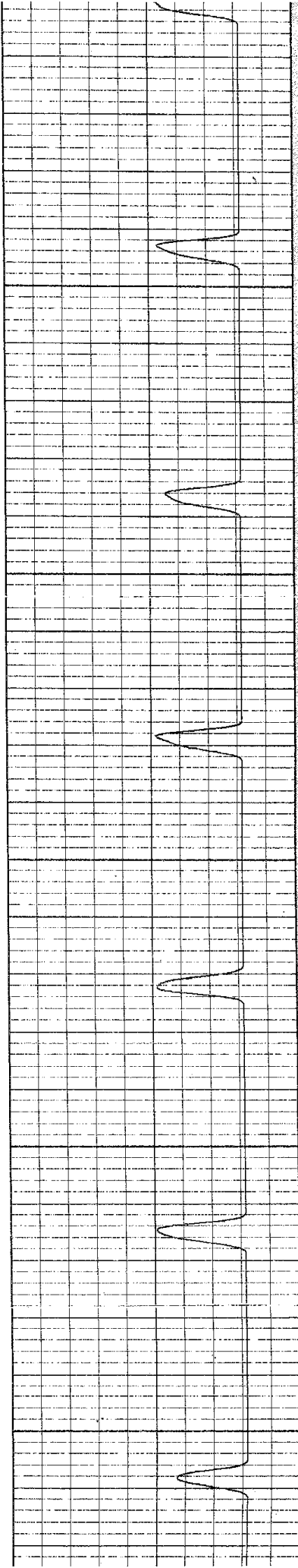
4100

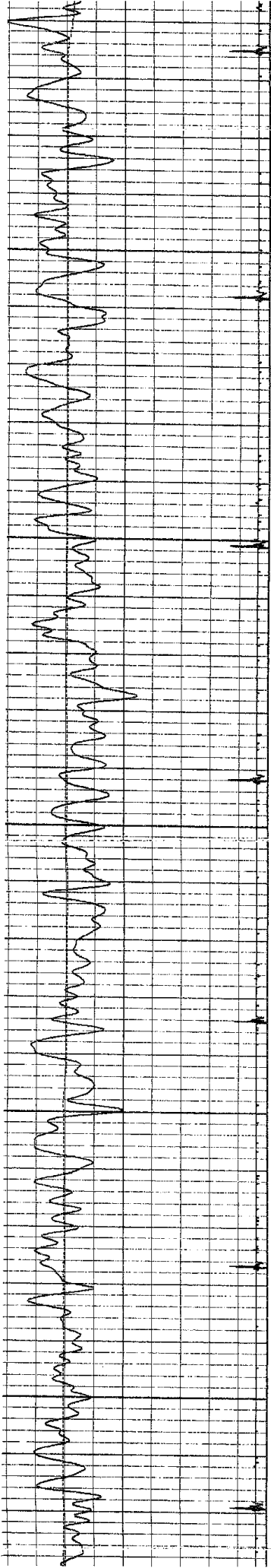
4150

4200

4250

4300





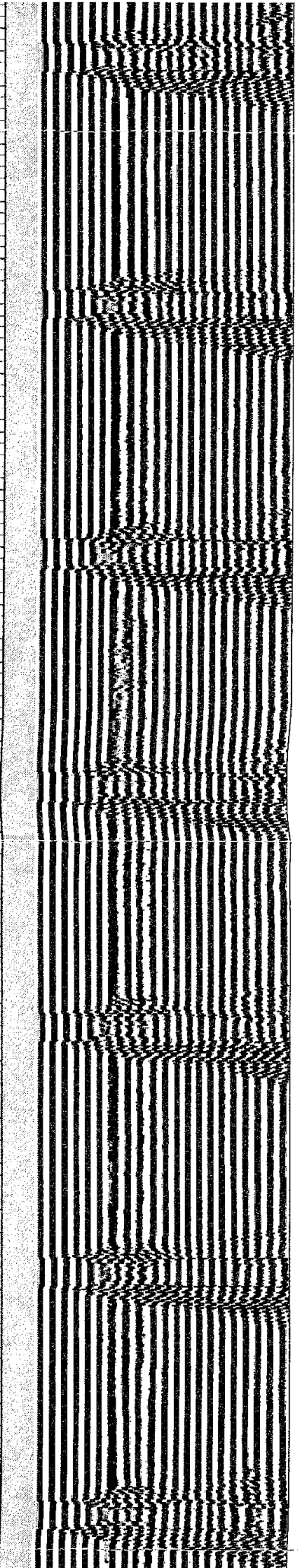
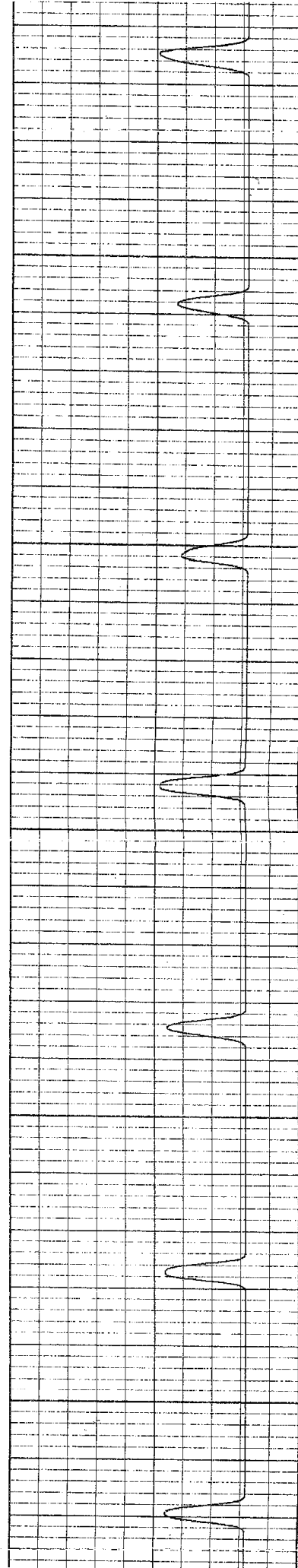
4300

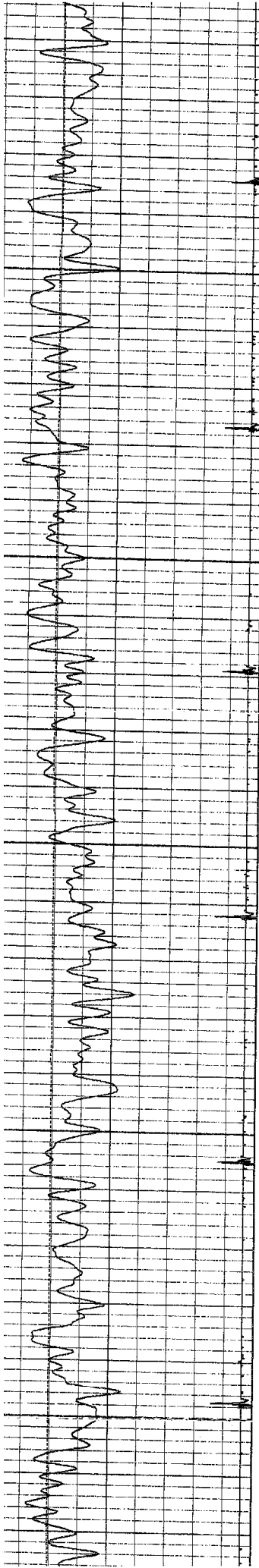
4350

4400

4450

4500





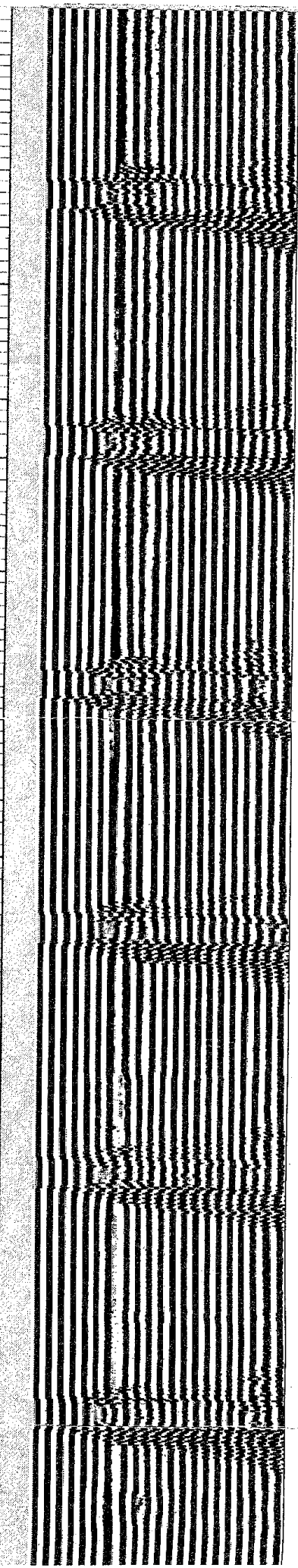
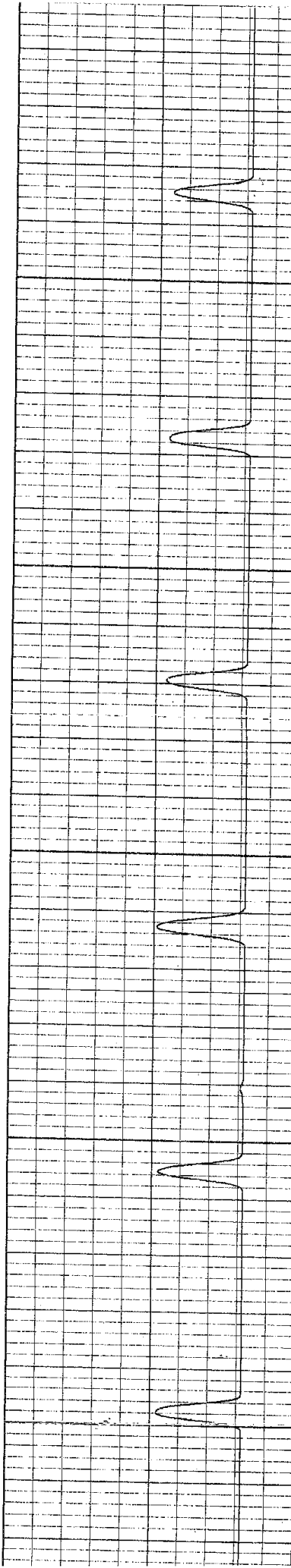
4450

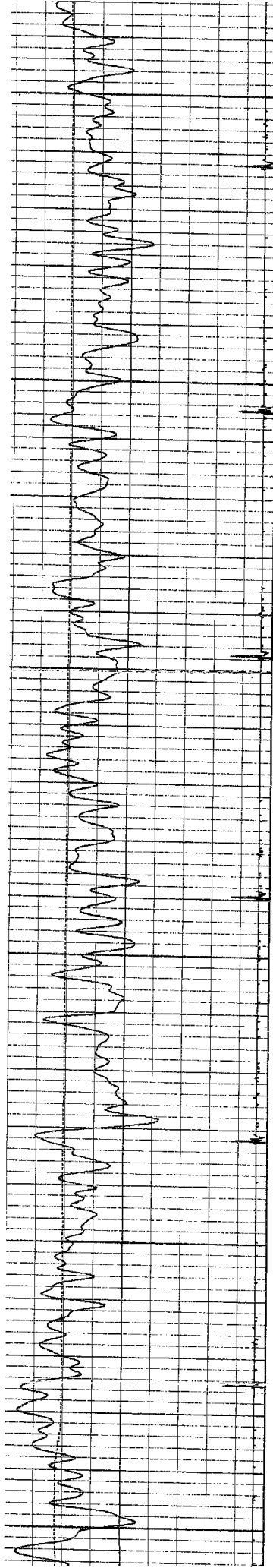
4500

4550

4600

4650





4550

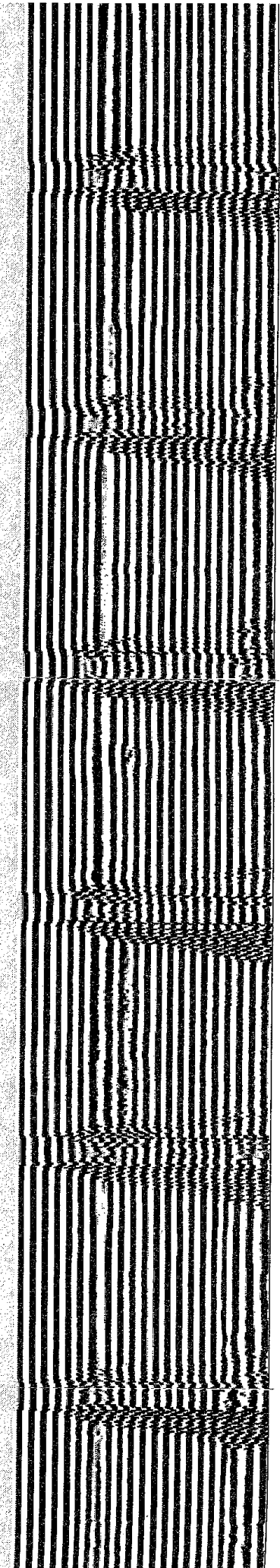
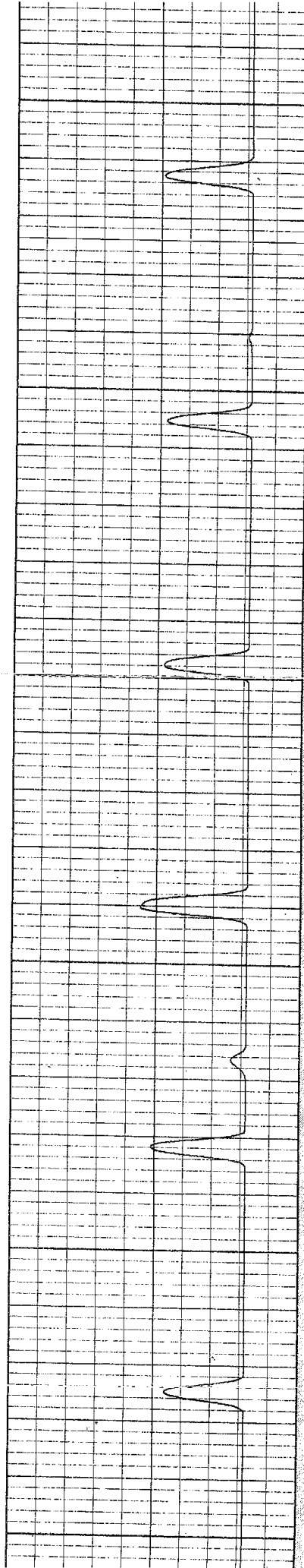
4600

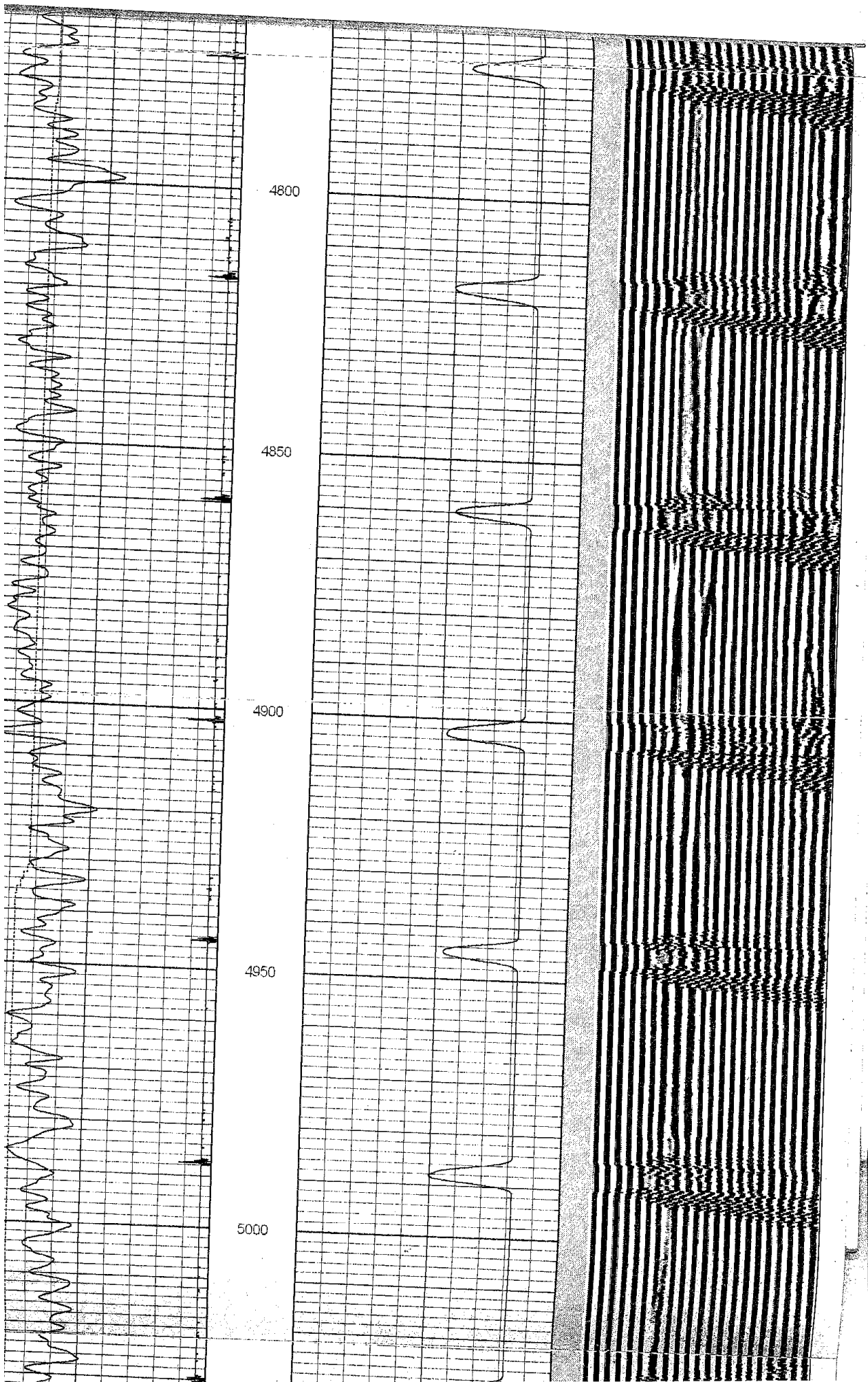
4650

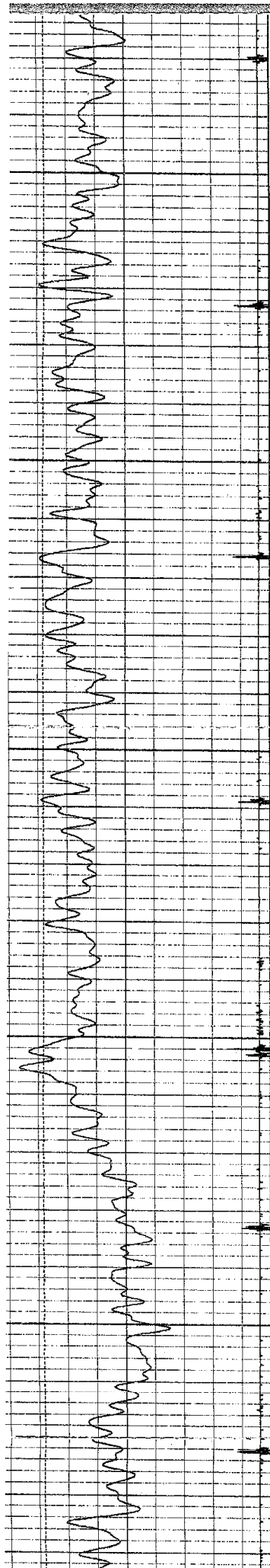
4700

4750

4800







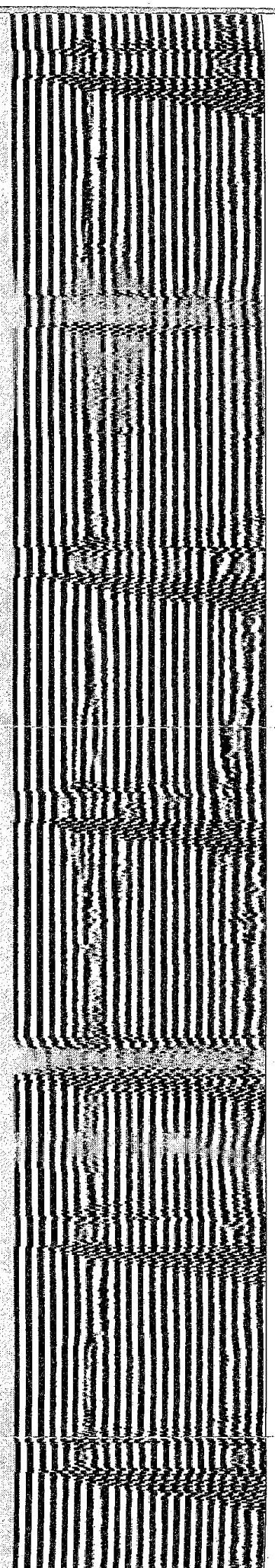
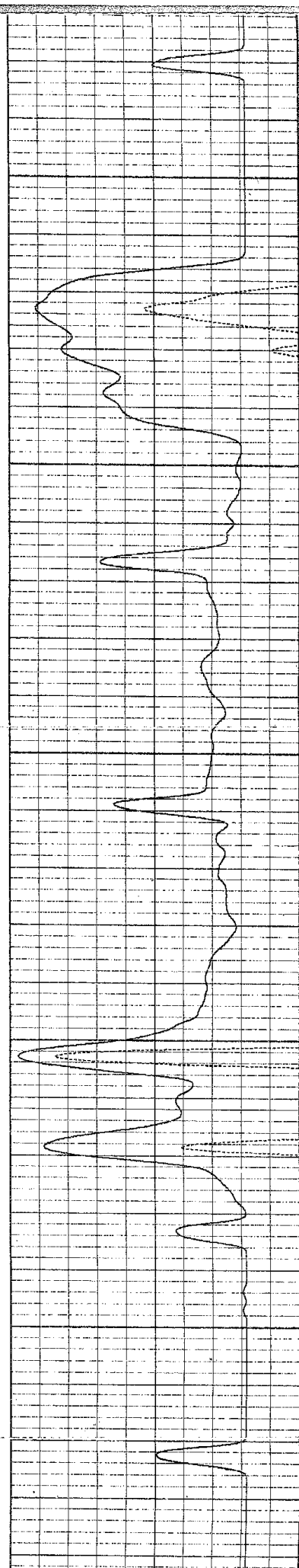
5050

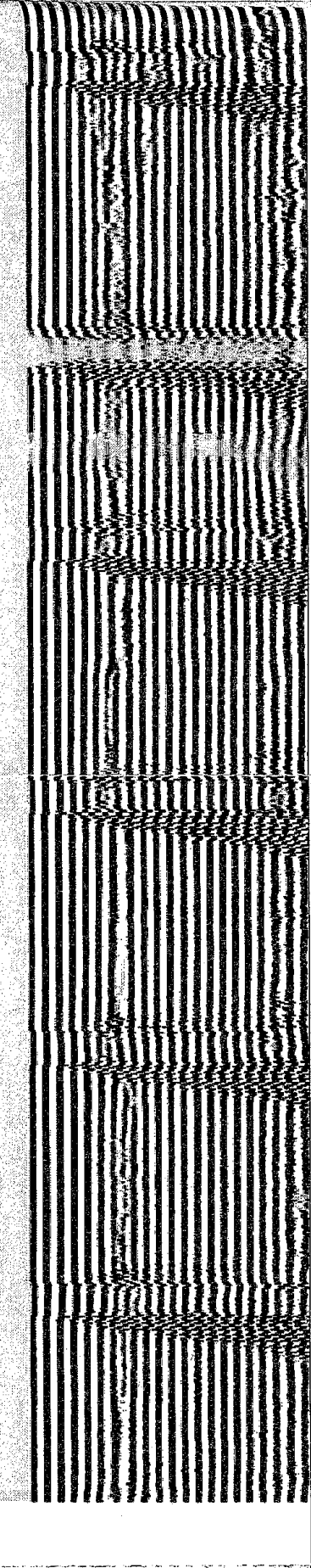
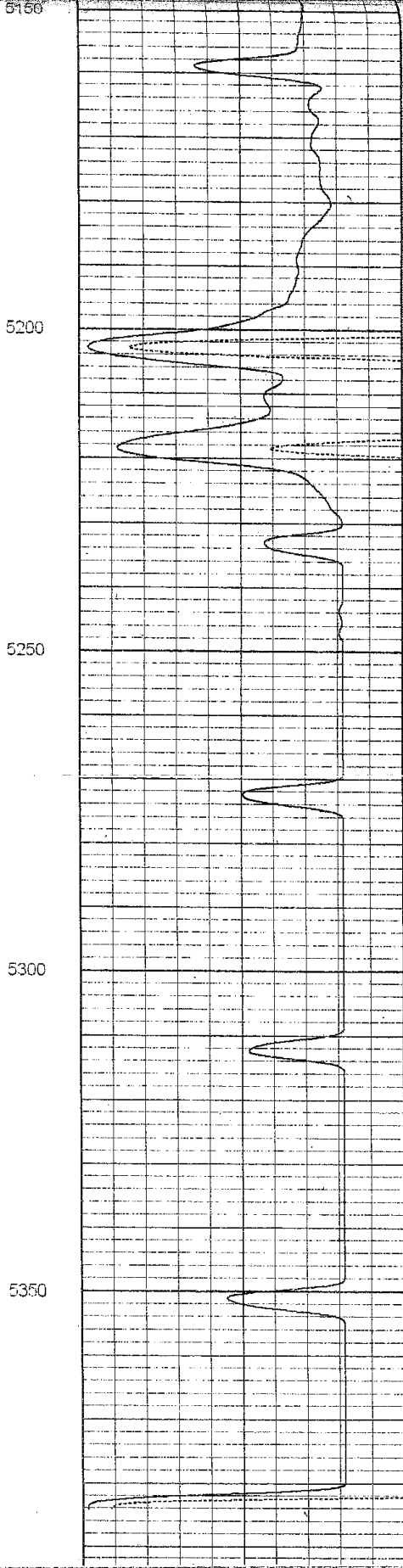
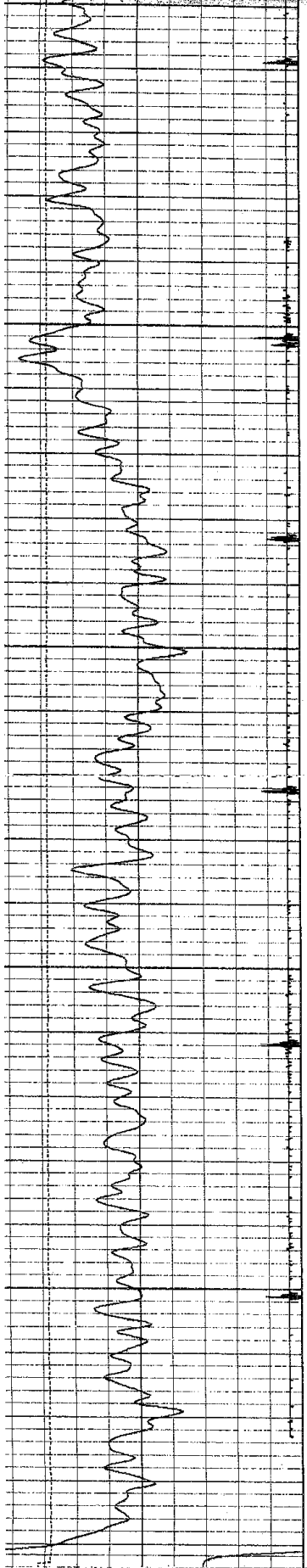
5100

5150

5200

5250





LSPD (ft/min)	-300
CCL	-0.3
Gamma Ray (GAPI)	130

0	Amplified Amplitude (mV)	20	200
0	Amplitude (mV)	100	

V D L	1200
-------	------