

GAMMA RAY / CCL  
CEMENT BOND / VDL

Company NOBLE ENERGY, INC  
Well VOLKENS 31-22  
Field WATTENBERG  
Country WELD State/Pv COLORADO

Location NW/NE  
Sec 22, Twp 4N, Rge 64W

Company  
Well  
Field  
Country  
State/Pv  
Permanent Datum  
Log Measured From  
Drilling Measured From  
Ground Level  
Elevation  
K.B. 4653  
D.F.  
G.L. 4655

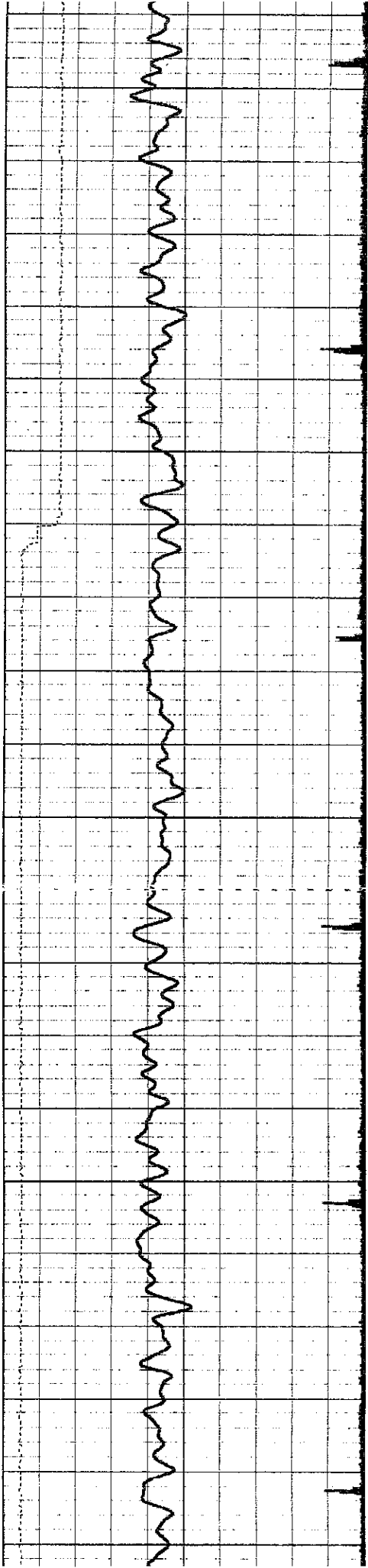
Date 11-15-06  
Run Number One  
Depth Driller  
Depth Logger  
Bottom Logged Interval 6737  
Top Log Interval 6100  
Open Hole Size  
Type Fluid Water/Full  
Density / Viscosity  
Max Recorded Temp 238 Deg F  
Estimated Cement Top 6365  
Time Well Ready  
Time Logger on Bottom  
Equipment Number  
Location Ft. Hood  
Plattsville  
Recorded By Brackelsberg  
Witnessed By Armstrong  
Run Number  
Bit  
From To  
Size  
Tubing Record  
Weight From To

Casing Record  
Surface String  
Prod. String  
Production String  
Liner  
Size  
Weight  
Top  
Bottom

All interpretations are opinions based on inferences from electrical or other measurements and we cannot and do not guarantee the accuracy or correctness of any interpretation, and we shall not, except in the case of gross or willful negligence on our part, be liable or responsible for any loss, costs, damages, or expenses incurred or sustained by anyone resulting from any interpretation made by any of our officers, agents or employees. These interpretations are also subject to our general terms and conditions set out in our current Price Schedule.

Comments

Thank You! for using  
NUEX Wireline, Inc



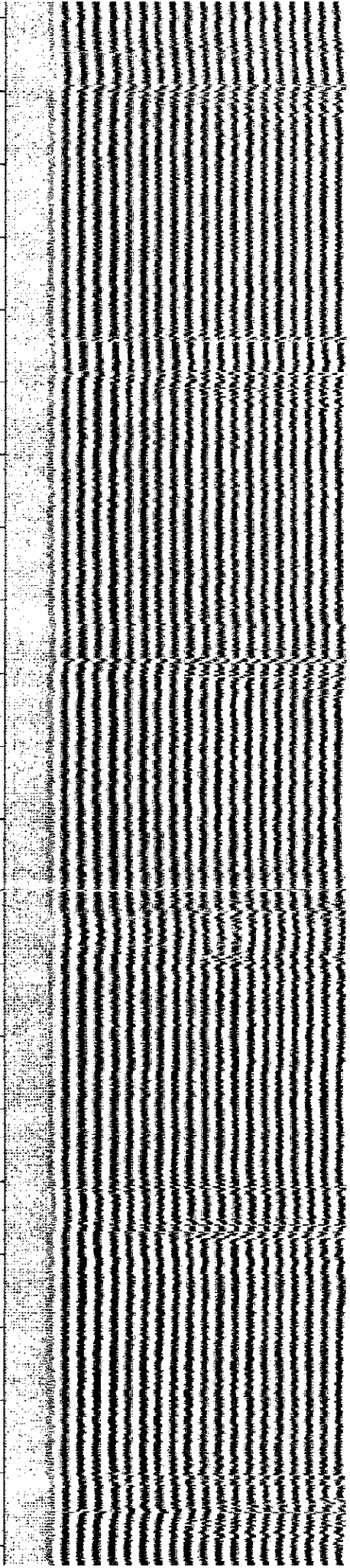
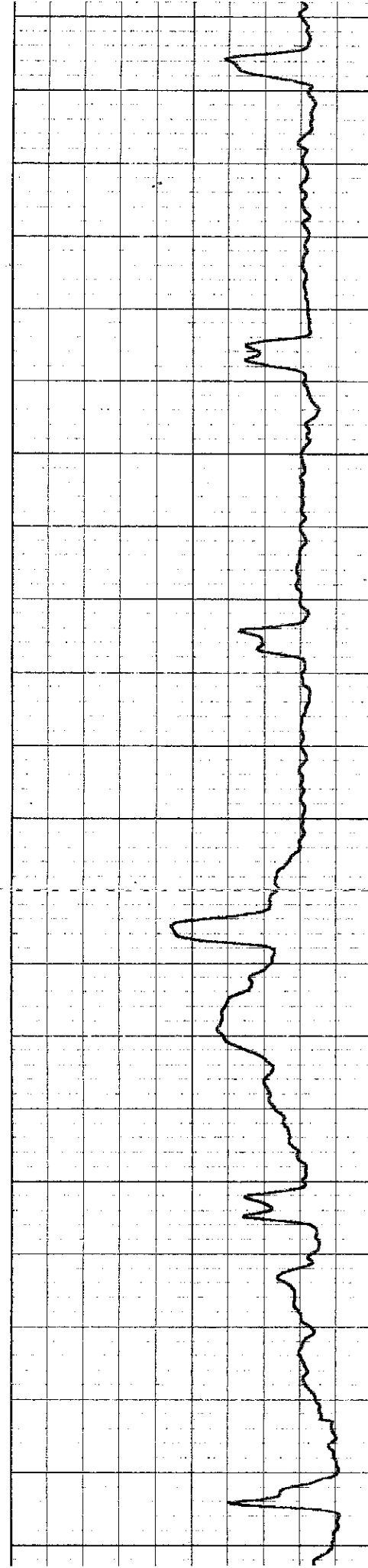
6100

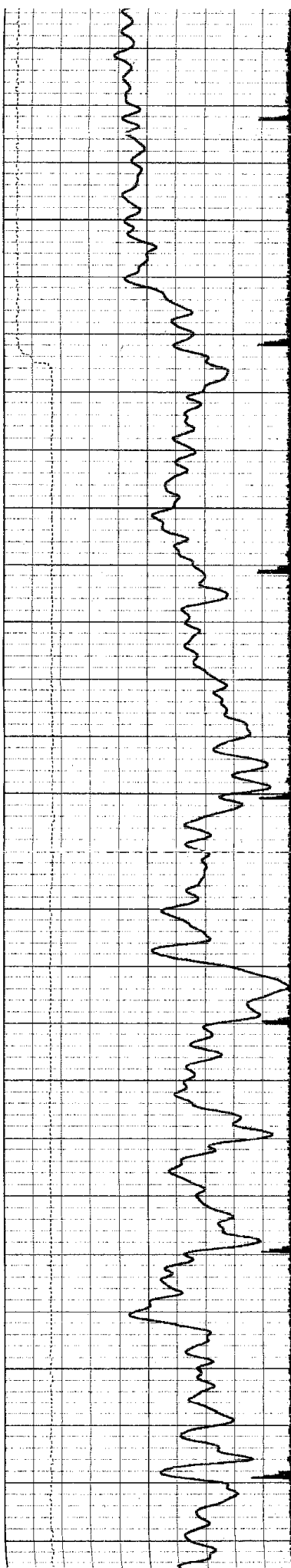
6150

6200

6250

6300





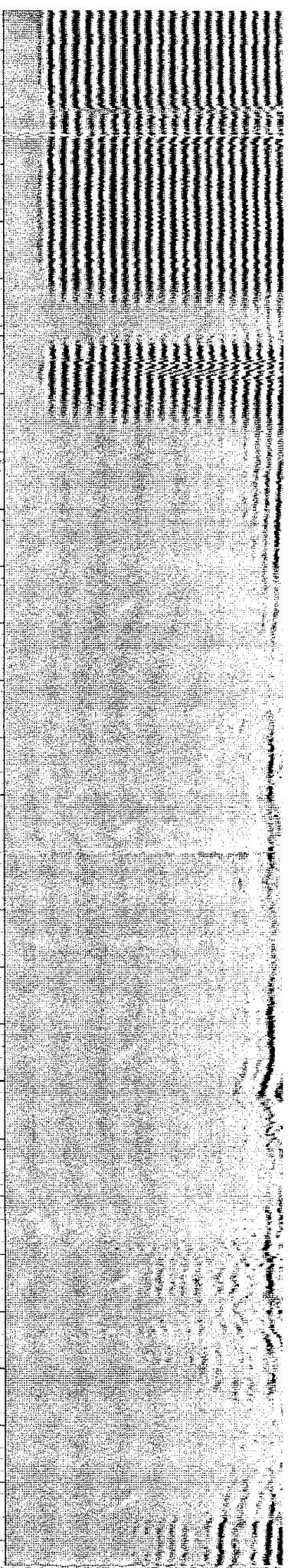
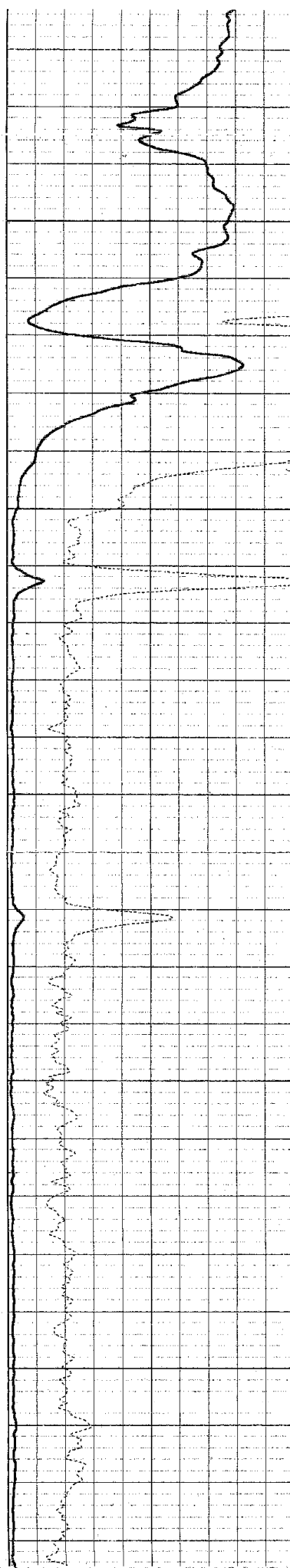
6350

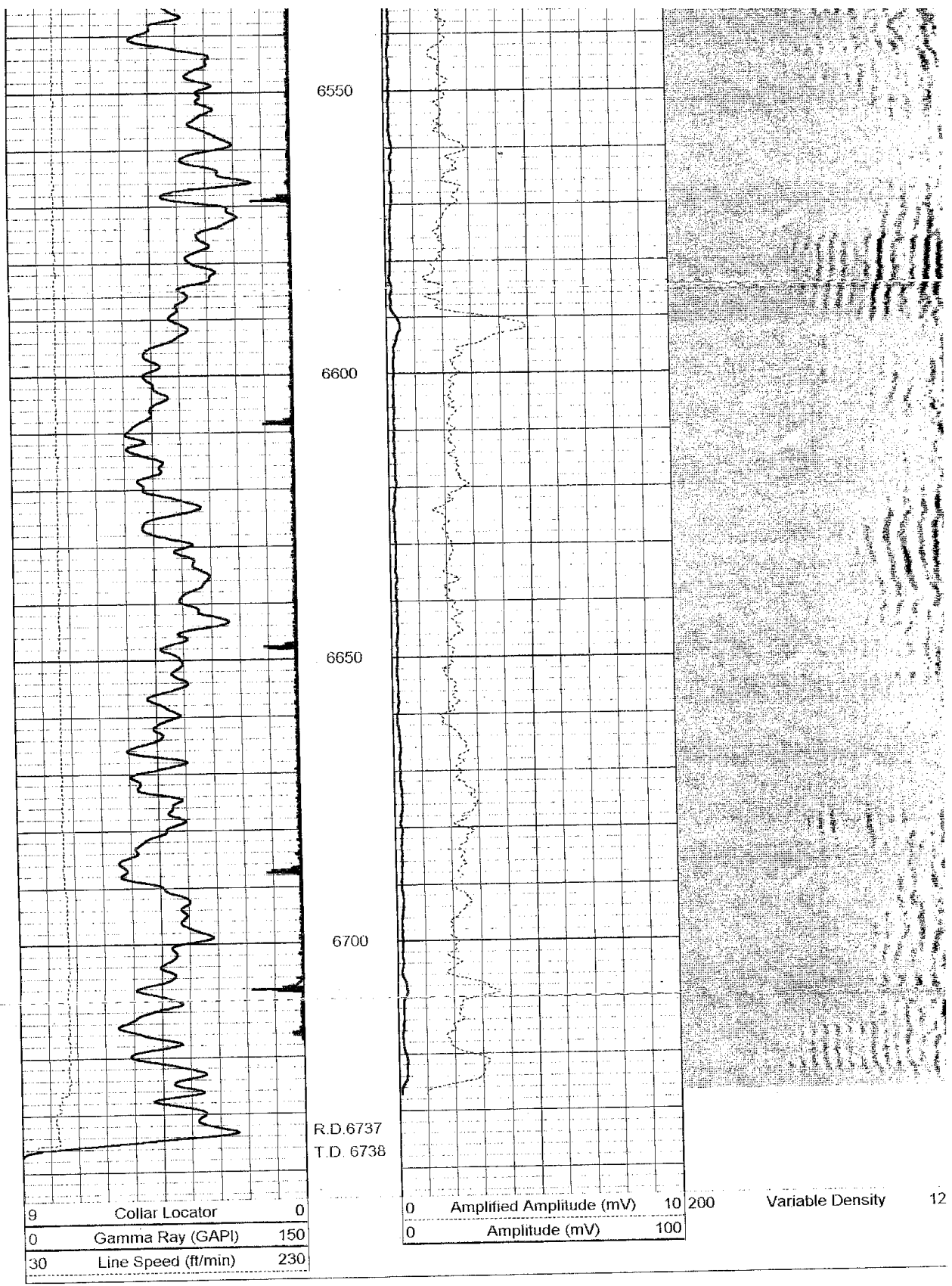
6400

6450

6500

6550





6550

6600

6650

6700

R.D. 6737  
T.D. 6738

9	Collar Locator	0
0	Gamma Ray (GAPI)	150
30	Line Speed (ft/min)	230

0	Amplified Amplitude (mV)	10	200
0	Amplitude (mV)	100	

Variable Density 12



### NOBLE ENERGY, INC

VOLKENS 31-22, 11-16-06, 6792-6805, 52 HOLES  
3 1/8" SLICK GUN, 23 GRAM CHARGE, .42" HOLE, 20.45" PEN., 60deg PHASE

Database File: cbl11-15.db  
 Dataset Pathname: run2/pass1  
 Presentation Format: ccl  
 Dataset Creation: Thu Nov 16 14:16:19 2006 by Log 6.1  
 Charted by: Depth in Feet scaled 1:240