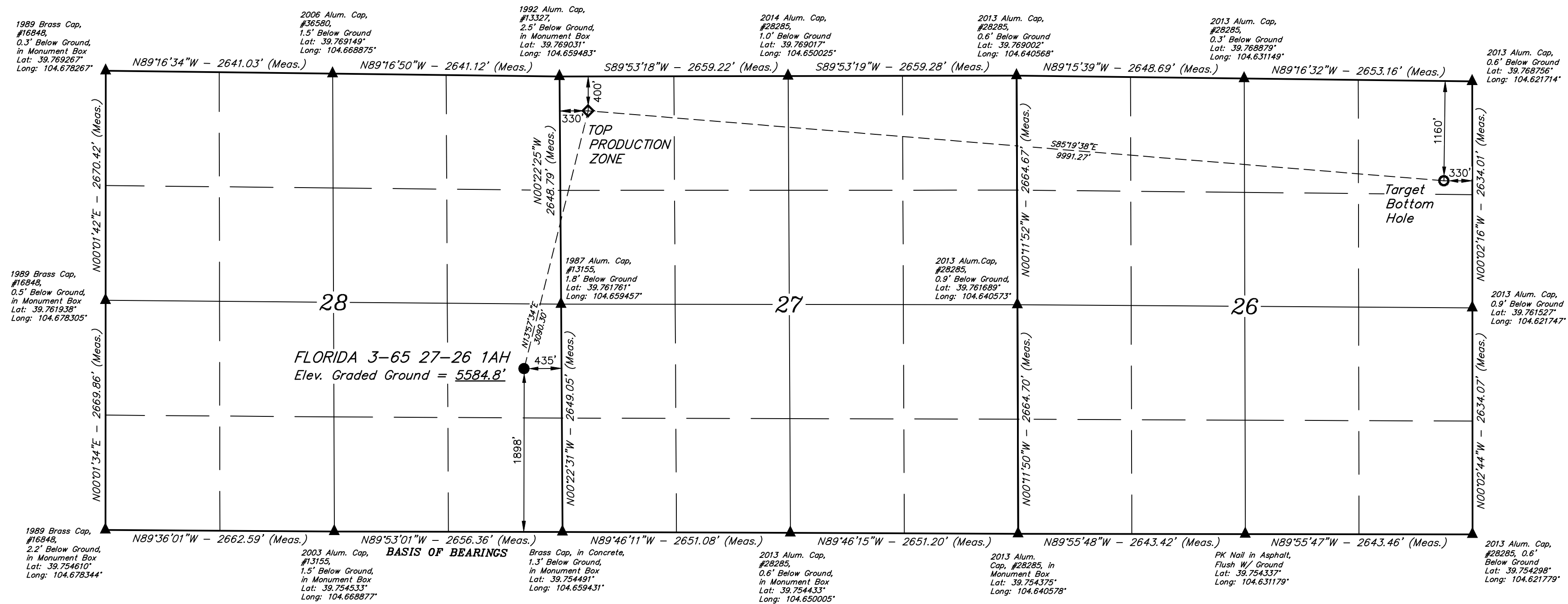
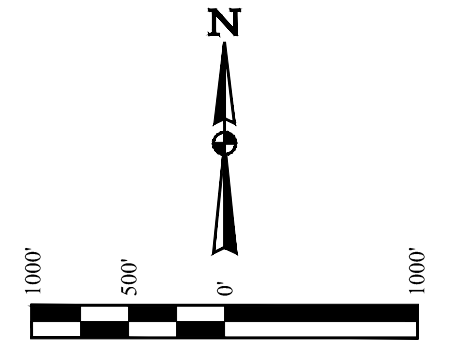


**BASIS OF ELEVATION**  
BENCHMARK: CITY OF AURORA BENCHMARK  
3S6636NE003 BEING A 3" DIAMETER BRASS CAP  
STAMPED "COA BM, 19-020B, E-090A" LOCATED ON  
TOP OF THE SOUTH WALL AT THE SOUTHEAST  
CORNER OF THE EAST 26TH AVENUE BRIDGE  
CROSSING OVER E-470. AKA 19-020B  
ELEVATION = 5521.54 (NAVD88)



CERTIFICATE OF REGISTRATION  
THIS IS TO CERTIFY THAT THE ABOVE DESCRIBED SURVEY WAS MADE AND THAT THE SAME ARE TRUE AND CORRECT TO THE BEST OF MY KNOWLEDGE AND BELIEF.

REGISTERED LAND SURVEYOR  
REGISTRATION NO. 28285  
STATE OF COLORADO

REV: 1 10-06-23 L.K. (UPDATE SURFACE HOLE LOCATIONS)

**LEGEND:**

- = PROPOSED WELLHEAD.
- ⬢ = TOP PRODUCTION ZONE.
- = TARGET BOTTOM HOLE.
- ▲ = SECTION CORNERS LOCATED. (NAD 83)

**NOTE:**  
Distances referenced on plat to section lines are perpendicular.

PDOP = 1.5

NAD 83 (SURFACE HOLE LOCATION)	NAD 83 (TOP PRODUCTION ZONE)	NAD 83 (TARGET BOTTOM HOLE)
LATITUDE = 39°45'34.95" (39.759708°)	LATITUDE = 39°46'04.55" (39.767931°)	LATITUDE = 39°45'56.12" (39.765588°)
LONGITUDE = -104°39'39.59" (-104.660997°)	LONGITUDE = -104°39'29.90" (-104.658305°)	LONGITUDE = -104°37'22.45" (-104.622902°)
STATE PLANE NAD 83 (CO. NORTH)	STATE PLANE NAD 83 (CO. NORTH)	STATE PLANE NAD 83 (CO. NORTH)
N: 1156431.39° E: 3235874.35°	N: 1159433.86° E: 3236602.62°	N: 1158676.67° E: 3246562.67°

**UJINTAH**  
ENGINEERS & LAND SURVEYORS

**UELS, LLC**  
Corporate Office: \* 85 South 200 East  
Vernal, UT 84078 \* (435) 789-1017

**WELL LOCATION PLAT**

SURVEYED BY: DALLAS NIELSEN, J.C. 06-28-23 SCALE: 1" = 1000'  
DRAWN BY: L.M.W. 07-18-23