

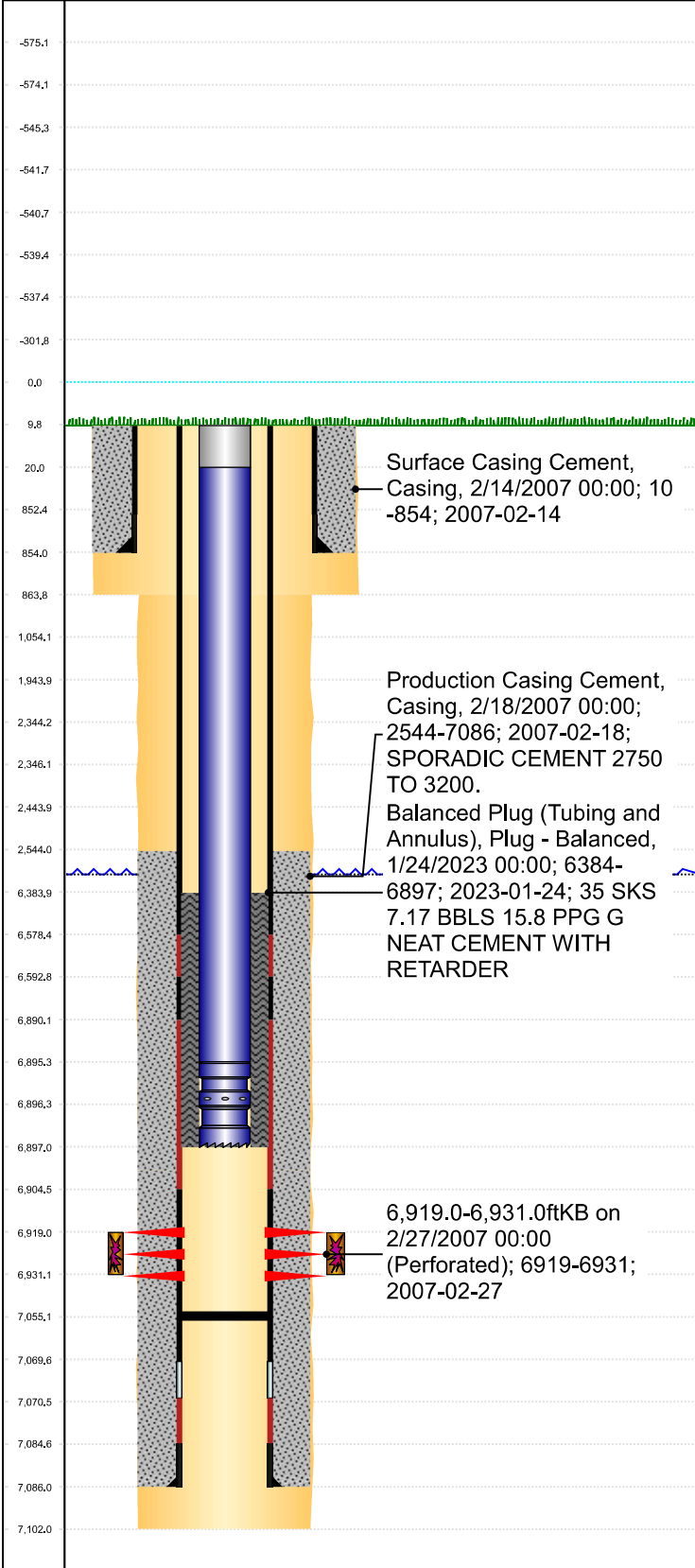


P&A Wellbore For State

Well Name: COCKROFT USX A11-03

Original Hole [Land]

MD (ftK B)
Vertical schematic (actual)



Well Header				
Surface UWI	Business Unit	Gov Auth Dist	Prod Tree Loc	
0512324710	Rockies		Land	
Orig. KB to Gnd (ft)	Original Spud Date	Abandon Date	Well Sub-Status	High...
10.00	2/13/2007		TA	N
Comment STAGE TOOL @ 4107'. STATE SHOWS SHUT IN SINCE MAY 2017.				

Surface Location (Congressional)								
Qtr 3	Qtr 4	Section	Twonshp	Twonsh...	Range	Rng E/...	Latitude (°)	Longitude (°)
NE	NW	11	6	N	64	W	40.506698938	-104.520261395

Wellbore Sections			
Section Des	Hole Size (in)	Top Depth (ftKB)	Btm Depth (ftKB)
SURFACE	12 1/4	10.0	864.0
PRODUCTION	7 7/8	864.0	7,102.0

Casing Strings						
Csg Des	Run Date	OD (in)	Wt/Len (lb/ft)	Grade	Top Depth (MD) (ftKB)	Set Depth (MD) (ftKB)
Surface	2/14/2007	8 5/8	24.00	J-55	10	854
Production Casing	2/18/2007	4 1/2	11.60	M-80	10	7086

Cement			
Des	Start Date	Top (ftKB)	Btm (ftKB)
SURFACE CASING CEMENT	2/14/2007	10.0	854.0
PRODUCTION CASING CEMENT	2/18/2007	2,544.0	7,086.0
Balanced Plug (Tubing and Annulus)	1/24/2023	6,384.0	6,897.0

Zone Statuses					
Zone Name	Status Date	Status	Fluid Type	Job	Prod Method
CODELL	2/29/2016	PR			
CODELL	1/24/2023	Closed		Abandon Well - Temporary, 12/28/2022 10:00	

Perforation Data					
Linked Zone	Explosive Type	Entered Shot Total	Top (ftKB)	Btm (ftKB)	Date
CODELL, Original Hole		48	6,919.0	6,931.0	2/27/2007

Stim/Frac Stage			
Zone	Start Date	Top (ftKB)	Btm (ftKB)
CODELL, Original Hole	3/13/2007	6,919.0	6,931.0

Other In Hole					
Run Date	Des	Make	OD (in)	Top (ftKB)	Btm (ftKB)

Logs			
Date	Type	Depth Top (MD) (ftKB)	Btm (ftKB)
2/17/2007	COMPENSATED DENSITY	2,700	7,079.0
2/17/2007	INDUCTION	854	7,099.0
2/27/2007	CBL/CCL/GR	2,406	7,050.0

Wellbore Plug Back Total Depths			
Date	Type	Com	PBTD (ftKB)
2/18/2007	FLOAT COLLAR	FLOAT COLLAR	7,071
2/27/2007	FILL	DEPTH LOGGER ON CBL	7,055