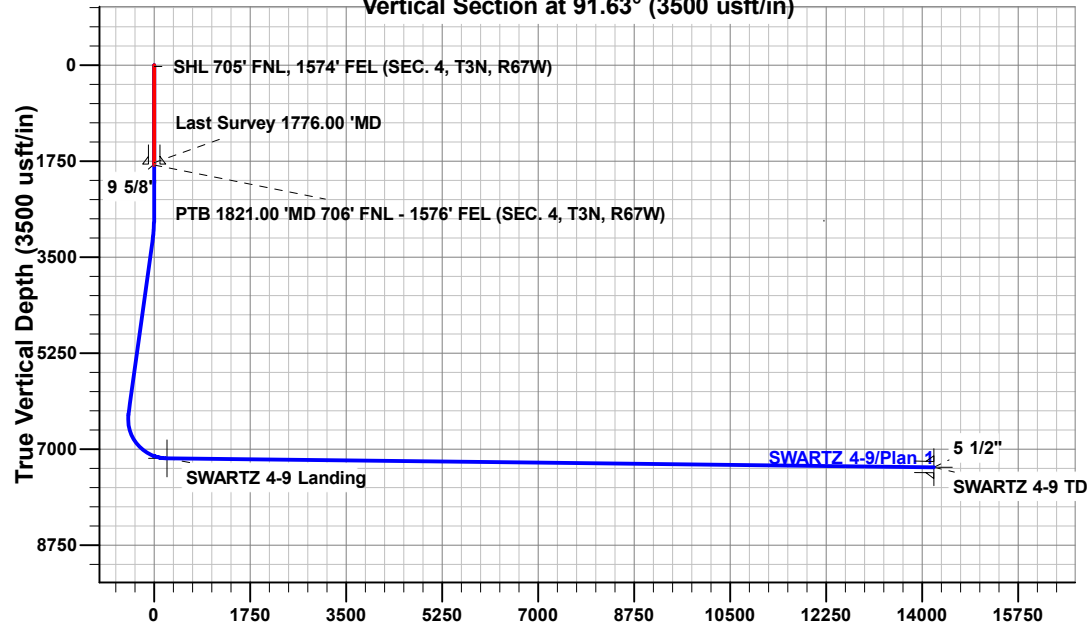


Vertical Section at 91.63° (3500 usft/in)



FORMATION TOP DETAILS

TVDPath	MDPath	Formation
705.00	705.00	Fox Hills
3596.00	3601.07	Parkman
4078.00	4087.81	Sussex
6839.00	6893.66	Sharon Springs
6869.00	6929.97	Niobrara
7021.00	7142.95	Nio B
7053.00	7198.76	Nio C
7155.00	7477.09	Fort Hayes
7176.00	8384.13	Codell

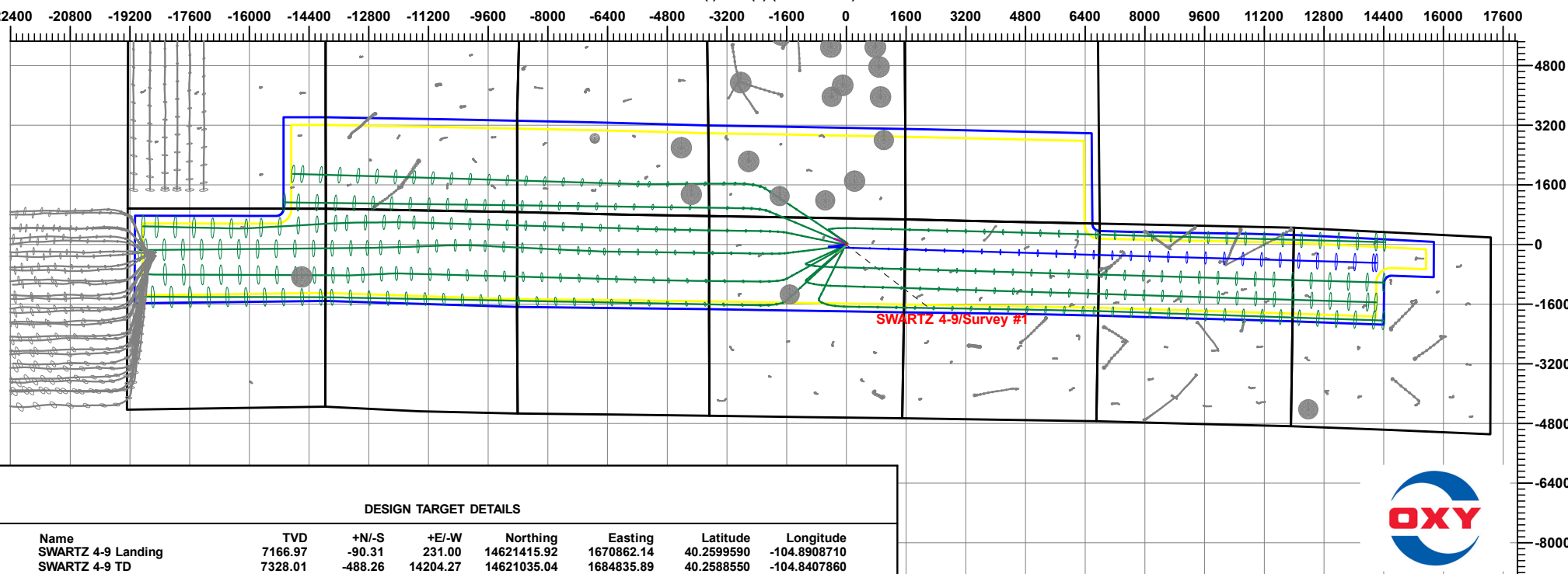
Project: Weld County, CO (UTM-NAD83)
 Site: 3N-67W-04 (Swartz Pad)
 Well: SWARTZ 4-9
 Wellbore: OH
 Design: OH

MD	Inc	Azi	TVD	+N/-S	+E/-W	VSect	Departure	Annotation
25.00	0.08	276.96	25.00	0.00	-0.02	-0.02	0.06	SHL 705' FNL, 1574' FEL (SEC. 4, T3N, R67W)
1776.00	0.46	254.88	1775.83	-1.79	-2.13	-2.08	22.08	Last Survey 1776.00 'MD
1821.00	0.46	254.88	1820.82	-1.89	-2.48	-2.42	22.44	PTB 1821.00 'MD 706' FNL - 1576' FEL (SEC. 4, T3N, R67W)

ANNOTATIONS

West(-)/East(+) (4000 usft/in)

South(-)/North(+) (4000 usft/in)



DESIGN TARGET DETAILS

Name	TVD	+N/-S	+E/-W	Northing	Easting	Latitude	Longitude
SWARTZ 4-9 Landing	7166.97	-90.31	231.00	14621415.92	1670862.14	40.2599590	-104.8908710
SWARTZ 4-9 TD	7328.01	-488.26	14204.27	14621035.04	1684835.89	40.2588550	-104.8407860



Occidental Petroleum

Weld County, CO (UTM-NAD83)

3N-67W-04 (Swartz Pad)

SWARTZ 4-9

OH

OH



Standard Survey Report

11 January, 2024

Total Report Version 1.60

COMPASS 5000.16 Build 97

Survey Report

Company:	Occidental Petroleum	Local Co-ordinate Reference:	Well SWARTZ 4-9
Project:	Weld County, CO (UTM-NAD83)	TVD Reference:	4825' GL + 15' KB @ 4840.00usft
Site:	3N-67W-04 (Swartz Pad)	MD Reference:	4825' GL + 15' KB @ 4840.00usft
Well:	SWARTZ 4-9	North Reference:	True
Wellbore:	OH	Survey Calculation Method:	Minimum Curvature
Design:	OH	Database:	EDM 5000.1 Single User Db

Project	Weld County, CO (UTM-NAD83)		
Map System:	Universal Transverse Mercator (US Survey Feet)	System Datum:	Ground Level
Geo Datum:	North American Datum 1983		
Map Zone:	Zone 13N (108 W to 102 W)		

Site	3N-67W-04 (Swartz Pad)		
Site Position:		Northing:	14,621,540.94 usft
From:	Lat/Long	Easting:	1,670,658.88 usft
Position Uncertainty:	0.00 usft	Slot Radius:	13-3/16 "
		Latitude:	40.2603030
		Longitude:	-104.8915990

Well	SWARTZ 4-9		
Well Position	+N/-S	0.00 usft	Northing: 14,621,505.94 usft
	+E/-W	0.00 usft	Easting: 1,670,631.03 usft
Position Uncertainty	3.28 usft	Wellhead Elevation:	usft
Grid Convergence:	0.07 °	Ground Level:	4,825.00 usft

Wellbore	OH		
Magnetics	Model Name	Sample Date	Declination
	HDGM2023	9/25/2023	(°) 7.90
			Dip Angle (°) 66.40
			Field Strength (nT) 51,647.70000000

Design	OH		
Audit Notes:			
Version:	1.0	Phase:	ACTUAL
Vertical Section:	Depth From (TVD)	+N/-S	Tie On Depth:
	(usft)	(usft)	(usft)
	0.00	0.00	0.00
			Direction (°) 91.63

Survey Program	Date	1/11/2024	
From	To	Survey (Wellbore)	Tool Name
(usft)	(usft)		Description
80.00	1,821.00	Survey #1 (OH)	APC_ISCWSA REV 2 MWD+ Fixed:v2:crustal field declination

Survey													
Measured			Vertical	Local Coordinates		Map Coordinates		Geo Coordinates		Vertical	Dogleg	Build	Turn
Depth	INC	AZI	Depth	+N/-S	+E/-W	Northing	Easting	Latitude	Longitude	Section	Rate	Rate	Rate
(usft)	(°)	(°)	(usft)	(usft)	(usft)	(usft)	(usft)	(°)	(°)	(usft)	(°/100usft)	(°/100usft)	(°/100usft)
0.00	0.00	0.00	0.00	0.00	0.00	14,621,505.95	1,670,631.03	40.2602070	-104.8916990	0.00	0.00	0.00	0.00
80.00	0.26	276.96	80.00	0.02	-0.18	14,621,505.97	1,670,630.85	40.2602071	-104.8916996	-0.18	0.33	0.33	0.00
172.00	0.37	17.83	172.00	0.33	-0.30	14,621,506.28	1,670,630.73	40.2602079	-104.8917000	-0.31	0.53	0.12	109.64
264.00	0.13	14.23	264.00	0.71	-0.18	14,621,506.66	1,670,630.85	40.2602090	-104.8916996	-0.20	0.26	-0.26	-3.91
354.00	0.15	356.24	354.00	0.93	-0.16	14,621,506.88	1,670,630.87	40.2602096	-104.8916996	-0.19	0.05	0.02	-19.99
444.00	0.52	5.49	444.00	1.45	-0.13	14,621,507.40	1,670,630.90	40.2602110	-104.8916994	-0.17	0.41	0.41	10.28

Survey Report

Company:	Occidental Petroleum	Local Co-ordinate Reference:	Well SWARTZ 4-9
Project:	Weld County, CO (UTM-NAD83)	TVD Reference:	4825' GL + 15' KB @ 4840.00usft
Site:	3N-67W-04 (Swartz Pad)	MD Reference:	4825' GL + 15' KB @ 4840.00usft
Well:	SWARTZ 4-9	North Reference:	True
Wellbore:	OH	Survey Calculation Method:	Minimum Curvature
Design:	OH	Database:	EDM 5000.1 Single User Db

Survey

Measured Depth (usft)	INC (°)	AZI (°)	Vertical Depth (usft)	Local Coordinates +N/-S (usft)	+E/-W (usft)	Map Coordinates Northing (usft)	Easting (usft)	Geo Coordinates Latitude (°)	Longitude (°)	Vertical Section (usft)	Dogleg Rate (°/100usft)	Build Rate (°/100usft)	Turn Rate (°/100usft)
533.00	0.78	191.99	532.99	1.26	-0.22	14,621,507.21	1,670,630.81	40.2602105	-104.8916998	-0.25	1.46	0.29	-194.94
623.00	0.96	221.06	622.98	0.10	-0.84	14,621,506.04	1,670,630.19	40.2602073	-104.8917020	-0.84	0.52	0.20	32.30
705.02	0.25	320.63	705.00	-0.28	-1.41	14,621,505.66	1,670,629.62	40.2602063	-104.8917040	-1.40	1.26	-0.86	121.40
Fox Hills													
712.00	0.30	336.21	711.98	-0.25	-1.42	14,621,505.69	1,670,629.61	40.2602063	-104.8917041	-1.42	1.26	0.66	223.17
802.00	0.48	280.93	801.98	0.03	-1.89	14,621,505.98	1,670,629.14	40.2602071	-104.8917057	-1.89	0.44	0.20	-61.42
891.00	1.20	42.89	890.97	0.79	-1.62	14,621,506.73	1,670,629.41	40.2602092	-104.8917048	-1.64	1.70	0.81	137.03
981.00	1.18	11.78	980.95	2.39	-0.79	14,621,508.33	1,670,630.24	40.2602136	-104.8917018	-0.86	0.71	-0.02	-34.57
1,070.00	1.70	3.52	1,069.93	4.60	-0.52	14,621,510.55	1,670,630.50	40.2602197	-104.8917008	-0.65	0.63	0.58	-9.28
1,159.00	0.45	349.02	1,158.91	6.26	-0.51	14,621,512.21	1,670,630.51	40.2602242	-104.8917008	-0.69	1.43	-1.40	-16.29
1,249.00	0.12	207.68	1,248.91	6.52	-0.62	14,621,512.47	1,670,630.40	40.2602249	-104.8917012	-0.80	0.61	-0.37	-157.04
1,338.00	1.07	174.61	1,337.90	5.61	-0.58	14,621,511.56	1,670,630.44	40.2602224	-104.8917011	-0.74	1.09	1.07	-37.16
1,428.00	1.28	194.18	1,427.88	3.80	-0.75	14,621,509.75	1,670,630.27	40.2602175	-104.8917017	-0.86	0.50	0.23	21.74
1,518.00	1.35	193.17	1,517.86	1.80	-1.24	14,621,507.74	1,670,629.79	40.2602120	-104.8917034	-1.29	0.08	0.08	-1.12
1,607.00	1.14	194.25	1,606.84	-0.08	-1.70	14,621,505.86	1,670,629.33	40.2602068	-104.8917051	-1.69	0.24	-0.24	1.21
1,697.00	0.52	172.97	1,696.83	-1.36	-1.87	14,621,504.59	1,670,629.16	40.2602033	-104.8917057	-1.83	0.76	-0.69	-23.64
1,776.00	0.46	254.88	1,775.83	-1.79	-2.13	14,621,504.15	1,670,628.90	40.2602021	-104.8917066	-2.08	0.82	-0.08	103.68
Last Survey 1776.00 'MD													
1,821.00	0.46	254.88	1,820.82	-1.89	-2.48	14,621,504.06	1,670,628.55	40.2602018	-104.8917079	-2.42	0.00	0.00	0.00
PTB 1821.00 'MD 706' FNL - 1576' FEL (SEC. 4, T3N, R67W)													

Formations

Measured Depth (usft)	Vertical Depth (usft)	Name	Lithology	Dip (°)	Dip Direction (°)
705.02	705.00	Fox Hills			

Design Annotations

Measured Depth (usft)	Vertical Depth (usft)	Local Coordinates +N/-S (usft)	+E/-W (usft)	Comment
1,776.00	1,775.83	-1.79	-2.13	Last Survey 1776.00 'MD
1,821.00	1,820.82	-1.89	-2.48	PTB 1821.00 'MD 706' FNL - 1576' FEL (SEC. 4, T3N, R67W)

Checked By: _____ Approved By: _____ Date: _____