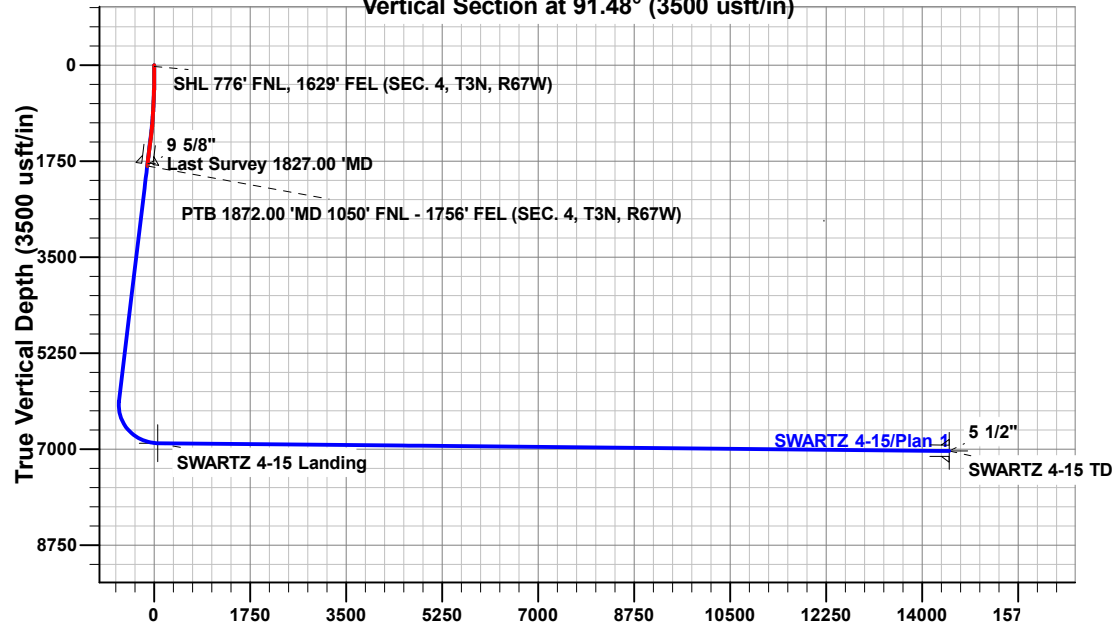


Vertical Section at 91.48° (3500 usft/in)



FORMATION TOP DETAILS

TVDPath	MDPath	Formation
705.00	706.16	Fox Hills
3596.00	3703.51	Parkman
4078.00	4205.11	Sussex
6839.00	7258.27	Sharon Springs
6869.00	7357.92	Niobrara
7021.00	20839.58	Nio B

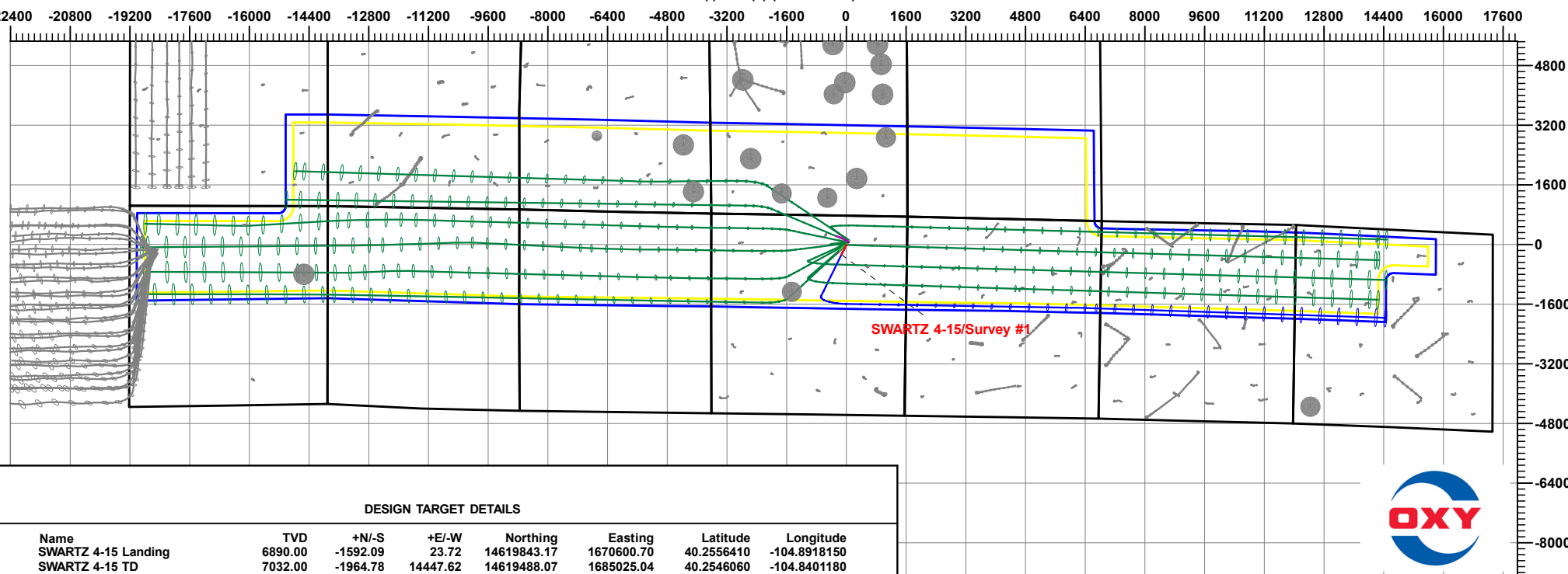
ANNOTATIONS

Project: Weld County, CO (UTM-NAD83)
 Site: 3N-67W-04 (Swartz Pad)
 Well: SWARTZ 4-15
 Wellbore: OH
 Design: OH

MD	Inc	Azi	TVD	+N/-S	+E/-W	VSect	Departure	Annotation
25.00	0.06	334.92	25.00	0.01	-0.01	-0.01	0.04	SHL 776' FNL, 1629' FEL (SEC. 4, T3N, R67W)
1827.00	16.16	204.00	1792.89	-260.93	-126.56	-119.78	291.41	Last Survey 1827.00' MD
1872.00	16.16	204.00	1836.11	-272.37	-131.65	-124.58	303.94	PTB 1872.00' MD 1050' FNL - 1756' FEL (SEC. 4, T3N, R67W)

West(-)/East(+) (4000 usft/in)

South(-)/North(+) (4000 usft/in)



DESIGN TARGET DETAILS

Name	TVD	+N/-S	+E/-W	Northing	Easting	Latitude	Longitude
SWARTZ 4-15 Landing	6890.00	-1592.09	23.72	14619843.17	1670600.70	40.2556410	-104.8918150
SWARTZ 4-15 TD	7032.00	-1964.78	14447.62	14619488.07	1685025.04	40.2546060	-104.8401180



Occidental Petroleum

Weld County, CO (UTM-NAD83)

3N-67W-04 (Swartz Pad)

SWARTZ 4-15

OH

OH



Standard Survey Report

11 January, 2024

Total Report Version 1.60

COMPASS 5000.16 Build 97

Survey Report

Company:	Occidental Petroleum	Local Co-ordinate Reference:	Well SWARTZ 4-15
Project:	Weld County, CO (UTM-NAD83)	TVD Reference:	4825' GL + 15' KB @ 4840.00usft
Site:	3N-67W-04 (Swartz Pad)	MD Reference:	4825' GL + 15' KB @ 4840.00usft
Well:	SWARTZ 4-15	North Reference:	True
Wellbore:	OH	Survey Calculation Method:	Minimum Curvature
Design:	OH	Database:	EDM 5000.1 Single User Db

Project	Weld County, CO (UTM-NAD83)		
Map System:	Universal Transverse Mercator (US Survey Feet)	System Datum:	Ground Level
Geo Datum:	North American Datum 1983		
Map Zone:	Zone 13N (108 W to 102 W)		

Site	3N-67W-04 (Swartz Pad)		
Site Position:		Northing:	14,621,540.94 usft
From:	Lat/Long	Easting:	1,670,658.88 usft
Position Uncertainty:	0.00 usft	Slot Radius:	13-3/16 "
		Latitude:	40.2603030
		Longitude:	-104.8915990

Well	SWARTZ 4-15		
Well Position	+N/-S	0.00 usft	Northing: 14,621,435.23 usft
	+E/-W	0.00 usft	Easting: 1,670,575.04 usft
Position Uncertainty	3.28 usft	Wellhead Elevation:	usft
Grid Convergence:	0.07 °	Ground Level:	4,825.00 usft

Wellbore	OH		
Magnetics	Model Name	Sample Date	Declination
	HDGM2023	9/25/2023	(°) 7.90
			Dip Angle (°) 66.40
			Field Strength (nT) 51,647.70000000

Design	OH		
Audit Notes:			
Version:	1.0	Phase:	ACTUAL
Vertical Section:	Depth From (TVD)	+N/-S	+E/-W
	(usft)	(usft)	(usft)
	0.00	0.00	0.00
			Direction (°) 91.48

Survey Program	Date	1/11/2024	
From	To	Survey (Wellbore)	Tool Name
(usft)	(usft)		Description
80.00	1,872.00	Survey #1 (OH)	APC_ISCWSA REV 2 MWD+ Fixed:v2:crustal field declination

Survey													
Measured	INC	AZI	Vertical	Local Coordinates		Map Coordinates		Geo Coordinates		Vertical	Dogleg	Build	Turn
Depth	(°)	(°)	Depth	+N/-S	+E/-W	Northing	Easting	Latitude	Longitude	Section	Rate	Rate	Rate
(usft)			(usft)	(usft)	(usft)	(usft)	(usft)	(°)	(°)	(usft)	(°/100usft)	(°/100usft)	(°/100usft)
0.00	0.00	0.00	0.00	0.00	0.00	14,621,435.23	1,670,575.04	40.2600130	-104.8919000	0.00	0.00	0.00	0.00
80.00	0.19	334.92	80.00	0.12	-0.06	14,621,435.35	1,670,574.98	40.2600134	-104.8919002	-0.06	0.24	0.24	0.00
172.00	0.17	223.14	172.00	0.16	-0.21	14,621,435.39	1,670,574.83	40.2600135	-104.8919007	-0.22	0.32	-0.02	-121.50
264.00	0.52	177.37	264.00	-0.36	-0.29	14,621,434.87	1,670,574.75	40.2600120	-104.8919010	-0.28	0.46	0.38	-49.75
354.00	2.04	202.52	353.97	-2.25	-0.88	14,621,432.99	1,670,574.16	40.2600069	-104.8919031	-0.82	1.76	1.69	27.94
443.00	2.35	211.05	442.91	-5.27	-2.43	14,621,429.96	1,670,572.62	40.2599986	-104.8919087	-2.29	0.51	0.35	9.58

Survey Report

Company:	Occidental Petroleum	Local Co-ordinate Reference:	Well SWARTZ 4-15
Project:	Weld County, CO (UTM-NAD83)	TVD Reference:	4825' GL + 15' KB @ 4840.00usft
Site:	3N-67W-04 (Swartz Pad)	MD Reference:	4825' GL + 15' KB @ 4840.00usft
Well:	SWARTZ 4-15	North Reference:	True
Wellbore:	OH	Survey Calculation Method:	Minimum Curvature
Design:	OH	Database:	EDM 5000.1 Single User Db

Survey

Measured Depth (usft)	INC (°)	AZI (°)	Vertical Depth (usft)	Local Coordinates +N/-S (usft)	+E/-W (usft)	Map Coordinates Northing (usft)	Easting (usft)	Geo Coordinates Latitude (°)	Longituge (°)	Vertical Section (usft)	Dogleg Rate (°/100usft)	Build Rate (°/100usft)	Turn Rate (°/100usft)
533.00	5.26	206.94	532.70	-10.53	-5.25	14,621,424.69	1,670,569.80	40.2599841	-104.8919188	-4.98	3.25	3.23	-4.57
622.00	5.51	214.88	621.31	-17.67	-9.54	14,621,417.55	1,670,565.52	40.2599645	-104.8919342	-9.08	0.88	0.28	8.92
706.10	5.78	215.08	705.00	-24.45	-14.29	14,621,410.76	1,670,560.78	40.2599459	-104.8919512	-13.65	0.32	0.32	0.23
Fox Hills													
712.00	5.80	215.09	710.87	-24.94	-14.63	14,621,410.27	1,670,560.44	40.2599445	-104.8919524	-13.98	0.32	0.32	0.22
801.00	7.06	197.79	799.32	-33.83	-18.89	14,621,401.38	1,670,556.19	40.2599201	-104.8919677	-18.01	2.58	1.42	-19.44
891.00	10.03	197.87	888.31	-46.56	-22.98	14,621,388.65	1,670,552.11	40.2598852	-104.8919824	-21.77	3.30	3.30	0.09
980.00	11.28	199.67	975.77	-62.13	-28.29	14,621,373.07	1,670,546.83	40.2598424	-104.8920014	-26.68	1.45	1.40	2.02
1,070.00	12.27	202.05	1,063.88	-79.28	-34.84	14,621,355.91	1,670,540.29	40.2597953	-104.8920249	-32.78	1.23	1.10	2.64
1,159.00	15.05	203.54	1,150.35	-98.65	-43.01	14,621,336.53	1,670,532.15	40.2597421	-104.8920541	-40.45	3.15	3.12	1.67
1,248.00	15.91	207.09	1,236.12	-120.10	-53.18	14,621,315.07	1,670,522.01	40.2596832	-104.8920906	-50.06	1.44	0.97	3.99
1,338.00	16.13	207.28	1,322.63	-142.19	-64.53	14,621,292.96	1,670,510.68	40.2596226	-104.8921313	-60.83	0.25	0.24	0.21
1,428.00	16.15	208.89	1,409.08	-164.27	-76.31	14,621,270.87	1,670,498.93	40.2595619	-104.8921735	-72.04	0.50	0.02	1.79
1,517.00	15.73	209.61	1,494.66	-185.59	-88.25	14,621,249.53	1,670,487.02	40.2595034	-104.8922163	-83.42	0.52	-0.47	0.81
1,607.00	15.13	209.73	1,581.42	-206.40	-100.10	14,621,228.71	1,670,475.19	40.2594462	-104.8922588	-94.74	0.67	-0.67	0.13
1,696.00	16.01	206.17	1,667.15	-227.50	-111.27	14,621,207.60	1,670,464.04	40.2593883	-104.8922988	-105.36	1.46	0.99	-4.00
1,786.00	16.54	203.69	1,753.55	-250.37	-121.89	14,621,184.71	1,670,453.45	40.2593255	-104.8923369	-115.39	0.97	0.59	-2.76
1,827.00	16.16	204.00	1,792.89	-260.93	-126.56	14,621,174.15	1,670,448.80	40.2592965	-104.8923536	-119.78	0.95	-0.93	0.76
Last Survey 1827.00 'MD													
1,872.00	16.16	204.00	1,836.11	-272.37	-131.65	14,621,162.70	1,670,443.72	40.2592651	-104.8923719	-124.58	0.00	0.00	0.00
PTB 1872.00 'MD 1050' FNL - 1756' FEL (SEC. 4, T3N, R67W)													

Formations

Measured Depth (usft)	Vertical Depth (usft)	Name	Lithology	Dip (°)	Dip Direction (°)
706.10	705.00	Fox Hills			

Design Annotations

Measured Depth (usft)	Vertical Depth (usft)	Local Coordinates +N/-S (usft)	+E/-W (usft)	Comment
1,827.00	1,792.89	-260.93	-126.56	Last Survey 1827.00 'MD
1,872.00	1,836.11	-272.37	-131.65	PTB 1872.00 'MD 1050' FNL - 1756' FEL (SEC. 4, T3N, R67W)

Checked By: _____ Approved By: _____ Date: _____