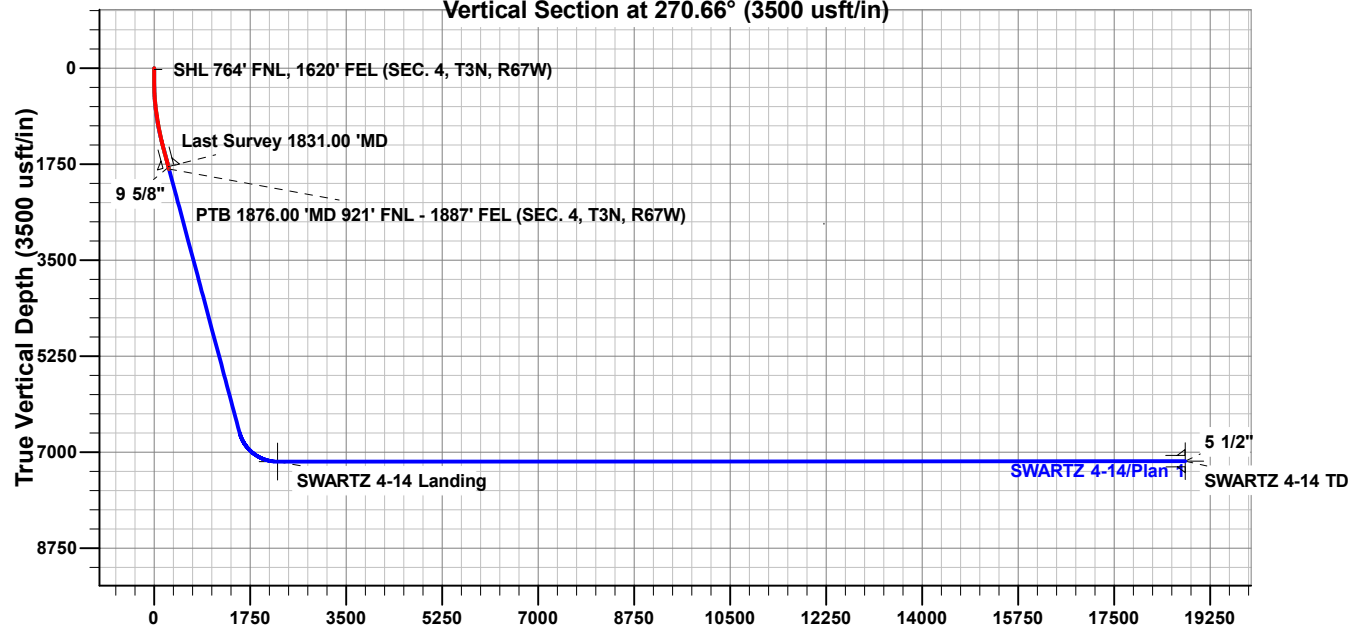


# Vertical Section at 270.66° (3500 usft/in)



## FORMATION TOP DETAILS

| TVDPPath | MDPath  | Formation      |
|----------|---------|----------------|
| 705.00   | 706.08  | Fox Hills      |
| 3596.00  | 3715.28 | Parkman        |
| 4078.00  | 4219.50 | Sussex         |
| 6839.00  | 7119.38 | Sharon Springs |
| 6869.00  | 7155.75 | Niobrara       |
| 7021.00  | 7368.07 | Nio B          |
| 7053.00  | 7423.26 | Nio C          |
| 7155.00  | 7687.26 | Fort Hayes     |

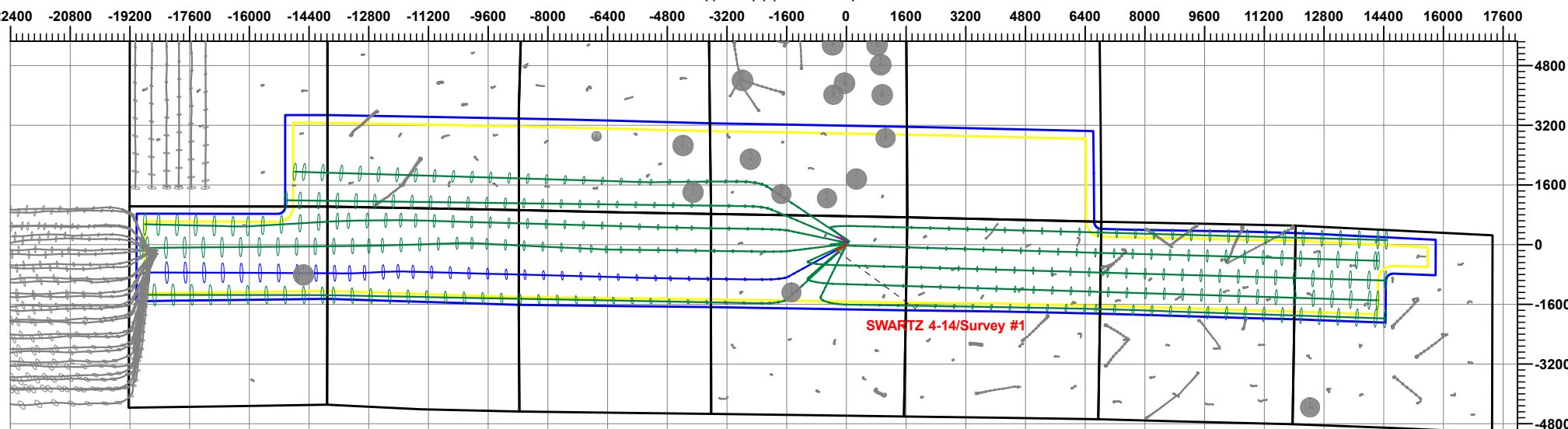
## ANNOTATIONS

Project: Weld County, CO (UTM-NAD83)  
 Site: 3N-67W-04 ( Swartz Pad )  
 Well: SWARTZ 4-14  
 Wellbore: OH  
 Design: OH

| MD      | Inc   | Azi    | TVD     | +N/-S   | +E/-W   | Vsect  | Departure | Annotation   |
|---------|-------|--------|---------|---------|---------|--------|-----------|--|
| 25.00   | 0.15  | 159.82 | 25.00   | -0.03   | 0.01    | -0.01  | 0.10      | SHL 764' FNL, 1620' FEL (SEC. 4, T3N, R67W)              |
| 1831.00 | 16.42 | 239.52 | 1795.20 | -145.66 | -259.36 | 257.66 | 302.83    | Last Survey 1831.00 'MD                                  |
| 1876.00 | 16.42 | 239.52 | 1838.36 | -152.11 | -270.32 | 268.55 | 315.55    | PTB 1876.00 'MD 921' FNL - 1887' FEL (SEC. 4, T3N, R67W) |

## West(-)/East(+) (4000 usft/in)

South(-)/North(+) (4000 usft/in)



## DESIGN TARGET DETAILS

| Name                | TVD     | +N/-S   | +E/-W     | Northing    | Easting    | Latitude   | Longitude    |
|---------------------|---------|---------|-----------|-------------|------------|------------|--------------|
| SWARTZ 4-14 Landing | 7172.00 | -932.14 | -2260.43  | 14620512.00 | 1668325.22 | 40.2574850 | -104.8999680 |
| SWARTZ 4-14 TD      | 7165.00 | -740.83 | -18804.49 | 14620683.13 | 1651780.94 | 40.2579910 | -104.9592670 |



# Occidental Petroleum

Weld County, CO (UTM-NAD83)

3N-67W-04 ( Swartz Pad )

SWARTZ 4-14

OH

OH



## Standard Survey Report

11 January, 2024

*Total Report Version 1.60*

*COMPASS 5000.16 Build 97*

## Survey Report

|                  |                             |                                     |                                 |
|------------------|-----------------------------|-------------------------------------|---------------------------------|
| <b>Company:</b>  | Occidental Petroleum        | <b>Local Co-ordinate Reference:</b> | Well SWARTZ 4-14                |
| <b>Project:</b>  | Weld County, CO (UTM-NAD83) | <b>TVD Reference:</b>               | 4825' GL + 15' KB @ 4840.00usft |
| <b>Site:</b>     | 3N-67W-04 ( Swartz Pad )    | <b>MD Reference:</b>                | 4825' GL + 15' KB @ 4840.00usft |
| <b>Well:</b>     | SWARTZ 4-14                 | <b>North Reference:</b>             | True                            |
| <b>Wellbore:</b> | OH                          | <b>Survey Calculation Method:</b>   | Minimum Curvature               |
| <b>Design:</b>   | OH                          | <b>Database:</b>                    | EDM 5000.1 Single User Db       |

|                    |  |                      |              |
|--------------------|--|----------------------|--------------|
| <b>Project</b>     | Weld County, CO (UTM-NAD83)                    |                      |              |
| <b>Map System:</b> | Universal Transverse Mercator (US Survey Feet) | <b>System Datum:</b> | Ground Level |
| <b>Geo Datum:</b>  | North American Datum 1983                      |                      |              |
| <b>Map Zone:</b>   | Zone 13N (108 W to 102 W)                      |                      |              |

|                              |                          |                     |                    |
|------------------------------|--------------------------|---------------------|--------------------|
| <b>Site</b>                  | 3N-67W-04 ( Swartz Pad ) |                     |                    |
| <b>Site Position:</b>        |                          | <b>Northing:</b>    | 14,621,540.94 usft |
| <b>From:</b>                 | Lat/Long                 | <b>Easting:</b>     | 1,670,658.88 usft  |
| <b>Position Uncertainty:</b> | 0.00 usft                | <b>Slot Radius:</b> | 13-3/16 "          |
|                              |                          | <b>Latitude:</b>    | 40.2603030         |
|                              |                          | <b>Longitude:</b>   | -104.8915990       |

|                             |              |                            |                  |
|-----------------------------|--------------|----------------------------|------------------|
| <b>Well</b>                 | SWARTZ 4-14  |                            |                  |
| <b>Well Position</b>        | <b>+N/-S</b> | 0.00 usft                  | <b>Northing:</b> |
|                             | <b>+E/-W</b> | 0.00 usft                  | <b>Easting:</b>  |
| <b>Position Uncertainty</b> | 3.28 usft    | <b>Wellhead Elevation:</b> | usft             |
| <b>Grid Convergence:</b>    | 0.07 °       | <b>Ground Level:</b>       | 4,825.00 usft    |
|                             |              | <b>Latitude:</b>           | 40.2600450       |
|                             |              | <b>Longitude:</b>          | -104.8918660     |

|                  |                   |                       |                    |
|------------------|-------------------|-----------------------|--------------------|
| <b>Wellbore</b>  | OH                |                       |                    |
| <b>Magnetics</b> | <b>Model Name</b> | <b>Sample Date</b>    | <b>Declination</b> |
|                  | HDGM2023          | 9/25/2023             | (°)                |
|                  |                   |                       | 7.90               |
|                  |                   | <b>Dip Angle</b>      | (°)                |
|                  |                   | 66.40                 |                    |
|                  |                   | <b>Field Strength</b> | (nT)               |
|                  |                   |                       | 51,647.70000000    |

|                          |                         |                  |                      |
|--------------------------|-------------------------|------------------|----------------------|
| <b>Design</b>            | OH                      |                  |                      |
| <b>Audit Notes:</b>      |                         |                  |                      |
| <b>Version:</b>          | 1.0                     | <b>Phase:</b>    | ACTUAL               |
| <b>Vertical Section:</b> | <b>Depth From (TVD)</b> | <b>+N/-S</b>     | <b>Tie On Depth:</b> |
|                          | (usft)                  | (usft)           | (usft)               |
|                          | 0.00                    | 0.00             | 0.00                 |
|                          |                         | <b>Direction</b> | (°)                  |
|                          |                         |                  | 270.66               |

|                       |             |                          |  |
|-----------------------|-------------|--------------------------|--|
| <b>Survey Program</b> | <b>Date</b> | 1/11/2024                |  |
| <b>From</b>           | <b>To</b>   | <b>Survey (Wellbore)</b> | <b>Tool Name</b>   |
| (usft)                | (usft)      |                          | <b>Description</b>                                       |
| 80.00                 | 1,876.00    | Survey #1 (OH)           | APC_ISCWSA REV 2 MWD+ Fixed:v2:crustal field declination |

| Survey   |          |        |                   |        |                 |               |                 |            |              |         |             |             |             |
|----------|----------|--------|-------------------|--------|-----------------|---------------|-----------------|------------|--------------|---------|-------------|-------------|-------------|
| Measured | Vertical |        | Local Coordinates |        | Map Coordinates |               | Geo Coordinates |            | Vertical     | Dogleg  | Build       | Turn        |             |
| Depth    | INC      | AZI    | Depth             | +N/-S  | +E/-W           | Northing      | Easting         | Latitude   | Longitude    | Section | Rate        | Rate        | Rate        |
| (usft)   | (°)      | (°)    | (usft)            | (usft) | (usft)          | (usft)        | (usft)          | (°)        | (°)          | (usft)  | (°/100usft) | (°/100usft) | (°/100usft) |
| 0.00     | 0.00     | 0.00   | 0.00              | 0.00   | 0.00            | 14,621,446.90 | 1,670,584.51    | 40.2600450 | -104.8918660 | 0.00    | 0.00        | 0.00        | 0.00        |
| 80.00    | 0.48     | 159.82 | 80.00             | -0.31  | 0.12            | 14,621,446.58 | 1,670,584.63    | 40.2600442 | -104.8918656 | -0.12   | 0.60        | 0.60        | 0.00        |
| 172.00   | 0.81     | 84.18  | 171.99            | -0.61  | 0.90            | 14,621,446.29 | 1,670,585.41    | 40.2600434 | -104.8918628 | -0.90   | 0.91        | 0.36        | -82.22      |
| 264.00   | 0.48     | 210.48 | 263.99            | -0.88  | 1.35            | 14,621,446.02 | 1,670,585.86    | 40.2600426 | -104.8918611 | -1.36   | 1.26        | -0.36       | 137.28      |
| 354.00   | 1.96     | 260.64 | 353.97            | -1.45  | -0.36           | 14,621,445.44 | 1,670,584.15    | 40.2600410 | -104.8918673 | 0.35    | 1.88        | 1.64        | 55.73       |
| 443.00   | 2.74     | 262.91 | 442.89            | -1.96  | -3.98           | 14,621,444.93 | 1,670,580.54    | 40.2600396 | -104.8918802 | 3.95    | 0.88        | 0.88        | 2.55        |

# Survey Report

|                  |                             |                                     |                                 |
|------------------|-----------------------------|-------------------------------------|---------------------------------|
| <b>Company:</b>  | Occidental Petroleum        | <b>Local Co-ordinate Reference:</b> | Well SWARTZ 4-14                |
| <b>Project:</b>  | Weld County, CO (UTM-NAD83) | <b>TVD Reference:</b>               | 4825' GL + 15' KB @ 4840.00usft |
| <b>Site:</b>     | 3N-67W-04 ( Swartz Pad )    | <b>MD Reference:</b>                | 4825' GL + 15' KB @ 4840.00usft |
| <b>Well:</b>     | SWARTZ 4-14                 | <b>North Reference:</b>             | True                            |
| <b>Wellbore:</b> | OH                          | <b>Survey Calculation Method:</b>   | Minimum Curvature               |
| <b>Design:</b>   | OH                          | <b>Database:</b>                    | EDM 5000.1 Single User Db       |

## Survey

| Measured Depth<br>(usft)  | INC<br>(°) | AZI<br>(°) | Vertical Depth<br>(usft) | Local Coordinates<br>+N/-S<br>(usft) | +E/-W<br>(usft) | Map Coordinates<br>Northing<br>(usft) | Easting<br>(usft) | Geo Coordinates<br>Latitude<br>(°) | Longituge<br>(°) | Vertical Section<br>(usft) | Dogleg Rate<br>(°/100usft) | Build Rate<br>(°/100usft) | Turn Rate<br>(°/100usft) |
|---|------------|------------|--------------------------|--------------------------------------|-----------------|---------------------------------------|-------------------|------------------------------------|------------------|----------------------------|----------------------------|---------------------------|--------------------------|
| 533.00  | 4.01       | 267.34     | 532.74                   | -2.37                                | -9.25           | 14,621,444.51                         | 1,670,575.26      | 40.2600385                         | -104.8918991     | 9.23                       | 1.44                       | 1.41                      | 4.92                     |
| 622.00  | 5.79       | 249.64     | 621.41                   | -4.08                                | -16.57          | 14,621,442.80                         | 1,670,567.94      | 40.2600338                         | -104.8919254     | 16.52                      | 2.60                       | 2.00                      | -19.89                   |
| 706.20  | 8.04       | 238.76     | 705.00                   | -8.61                                | -25.59          | 14,621,438.25                         | 1,670,558.93      | 40.2600214                         | -104.8919577     | 25.49                      | 3.08                       | 2.67                      | -12.92                   |
| <b>Fox Hills</b>  |            |            |                          |                                      |                 |                                       |                   |                                    |                  |                            |                            |                           |                          |
| 712.00  | 8.20       | 238.23     | 710.74                   | -9.04                                | -26.29          | 14,621,437.83                         | 1,670,558.23      | 40.2600202                         | -104.8919602     | 26.18                      | 3.08                       | 2.80                      | -9.09                    |
| 801.00  | 9.28       | 242.86     | 798.71                   | -15.66                               | -38.07          | 14,621,431.20                         | 1,670,546.46      | 40.2600020                         | -104.8920024     | 37.89                      | 1.45                       | 1.21                      | 5.20                     |
| 891.00  | 10.64      | 231.98     | 887.36                   | -24.08                               | -51.07          | 14,621,422.75                         | 1,670,533.47      | 40.2599789                         | -104.8920490     | 50.79                      | 2.57                       | 1.51                      | -12.09                   |
| 980.00  | 11.80      | 231.22     | 974.65                   | -34.84                               | -64.64          | 14,621,411.97                         | 1,670,519.91      | 40.2599493                         | -104.8920977     | 64.24                      | 1.31                       | 1.30                      | -0.85                    |
| 1,070.00  | 13.70      | 232.39     | 1,062.43                 | -47.11                               | -80.26          | 14,621,399.69                         | 1,670,504.31      | 40.2599157                         | -104.8921537     | 79.71                      | 2.13                       | 2.11                      | 1.30                     |
| 1,159.00  | 13.77      | 237.99     | 1,148.89                 | -59.16                               | -97.59          | 14,621,387.62                         | 1,670,486.99      | 40.2598826                         | -104.8922158     | 96.90                      | 1.50                       | 0.08                      | 6.29                     |
| 1,248.00  | 14.27      | 238.63     | 1,235.24                 | -70.49                               | -115.94         | 14,621,376.27                         | 1,670,468.66      | 40.2598515                         | -104.8922815     | 115.12                     | 0.59                       | 0.56                      | 0.72                     |
| 1,338.00  | 14.51      | 240.57     | 1,322.42                 | -81.80                               | -135.23         | 14,621,364.93                         | 1,670,449.38      | 40.2598204                         | -104.8923507     | 134.28                     | 0.60                       | 0.27                      | 2.16                     |
| 1,428.00  | 16.41      | 241.75     | 1,409.15                 | -93.36                               | -156.25         | 14,621,353.35                         | 1,670,428.38      | 40.2597887                         | -104.8924260     | 155.16                     | 2.14                       | 2.11                      | 1.31                     |
| 1,517.00  | 16.99      | 244.22     | 1,494.40                 | -104.96                              | -179.03         | 14,621,341.71                         | 1,670,405.61      | 40.2597568                         | -104.8925077     | 177.81                     | 1.03                       | 0.65                      | 2.78                     |
| 1,607.00  | 16.86      | 244.26     | 1,580.50                 | -116.35                              | -202.63         | 14,621,330.30                         | 1,670,382.02      | 40.2597255                         | -104.8925923     | 201.28                     | 0.15                       | -0.14                     | 0.04                     |
| 1,696.00  | 16.78      | 244.73     | 1,665.70                 | -127.44                              | -225.87         | 14,621,319.18                         | 1,670,358.79      | 40.2596951                         | -104.8926756     | 224.39                     | 0.18                       | -0.09                     | 0.53                     |
| 1,786.00  | 16.17      | 239.84     | 1,752.00                 | -139.28                              | -248.46         | 14,621,307.31                         | 1,670,336.22      | 40.2596625                         | -104.8927565     | 246.84                     | 1.68                       | -0.68                     | -5.43                    |
| 1,831.00  | 16.42      | 239.52     | 1,795.20                 | -145.66                              | -259.36         | 14,621,300.92                         | 1,670,325.33      | 40.2596450                         | -104.8927956     | 257.66                     | 0.59                       | 0.56                      | -0.71                    |
| <b>Last Survey 1831.00 'MD</b>                                  |            |            |                          |                                      |                 |                                       |                   |                                    |                  |                            |                            |                           |                          |
| 1,876.00  | 16.42      | 239.52     | 1,838.36                 | -152.11                              | -270.32         | 14,621,294.46                         | 1,670,314.38      | 40.2596273                         | -104.8928349     | 268.55                     | 0.00                       | 0.00                      | 0.00                     |
| <b>PTB 1876.00 'MD 921' FNL - 1887' FEL (SEC. 4, T3N, R67W)</b> |            |            |                          |                                      |                 |                                       |                   |                                    |                  |                            |                            |                           |                          |

## Formations

| Measured Depth<br>(usft) | Vertical Depth<br>(usft) | Name      | Lithology | Dip<br>(°) | Dip Direction<br>(°) |
|--------------------------|--------------------------|-----------|-----------|------------|----------------------|
| 706.20                   | 705.00                   | Fox Hills |           |            |                      |

## Design Annotations

| Measured Depth<br>(usft) | Vertical Depth<br>(usft) | Local Coordinates<br>+N/-S<br>(usft) | +E/-W<br>(usft) | Comment  |
|--------------------------|--------------------------|--------------------------------------|-----------------|--|
| 1,831.00                 | 1,795.20                 | -145.66                              | -259.36         | Last Survey 1831.00 'MD                                  |
| 1,876.00                 | 1,838.36                 | -152.11                              | -270.32         | PTB 1876.00 'MD 921' FNL - 1887' FEL (SEC. 4, T3N, R67W) |

Checked By: \_\_\_\_\_ Approved By: \_\_\_\_\_ Date: \_\_\_\_\_