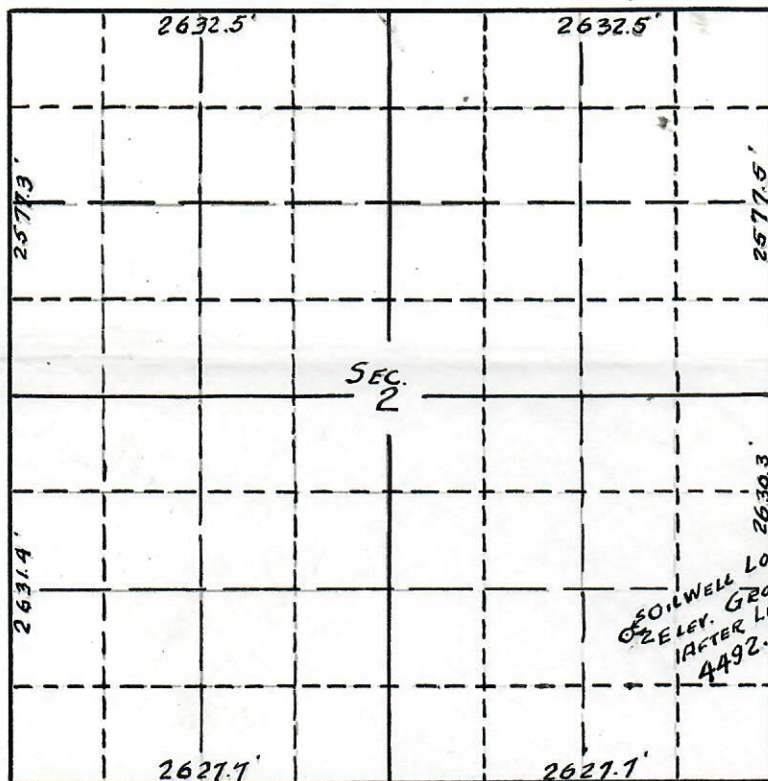


CERTIFICATE OF SURVEY
for
J.M.HUBER CORPORATION

87 A

file

T2N R57W 6PM

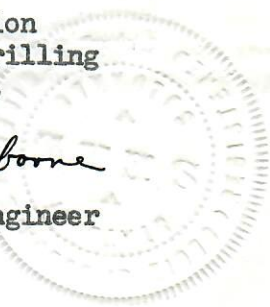


SCALE: 4" = 1 MI.

I hereby certify that the above plat is an accurate representation of a correct survey showing the location for an oil well in the center of the NW $\frac{1}{4}$ SE $\frac{1}{4}$ SE $\frac{1}{4}$ Section 2 T2N R57W 6PM. The ground elevation at the location after the ground had been leveled to erect the drilling rig is 4492.3 feet above mean sea level from U.S.B.R. Bench Mark.

Fort Morgan, Colorado.
October 22, 1950.

Beal J. Osborne
Registered Civil Engineer
State of Colorado.



00105052