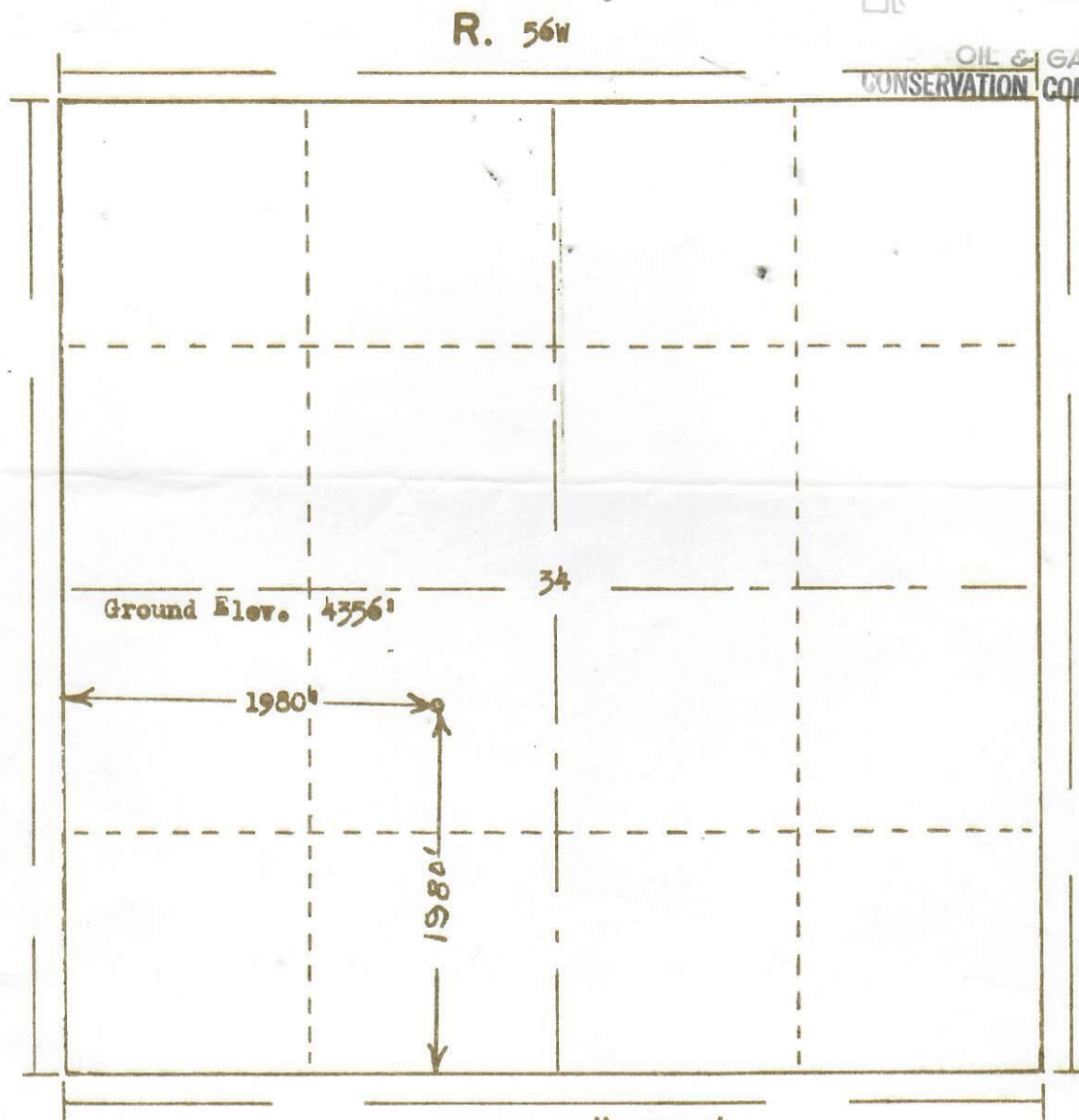




RECEIVED
APR 19 1966

OIL & GAS
CONSERVATION COMMISSION



T.
2
N.

Scale ... 1" = 1000'

Powers Surveyors, Inc. of Denver, Colorado
has in accordance with a request from Mr. Harrison
for Cardinal Petroleum determined the
Location of No. 1 Peterson
to be ONE SW Section 34 Township 2N
Range 56W of the 6th Principal Meridian
Morgan County, Colorado

I hereby certify that this plat is an
accurate representation of a correct
survey showing the location of

Date: 4-14-66

Bruce G. Holloway
Licensed Land Surveyor No. 1853
State of Colorado