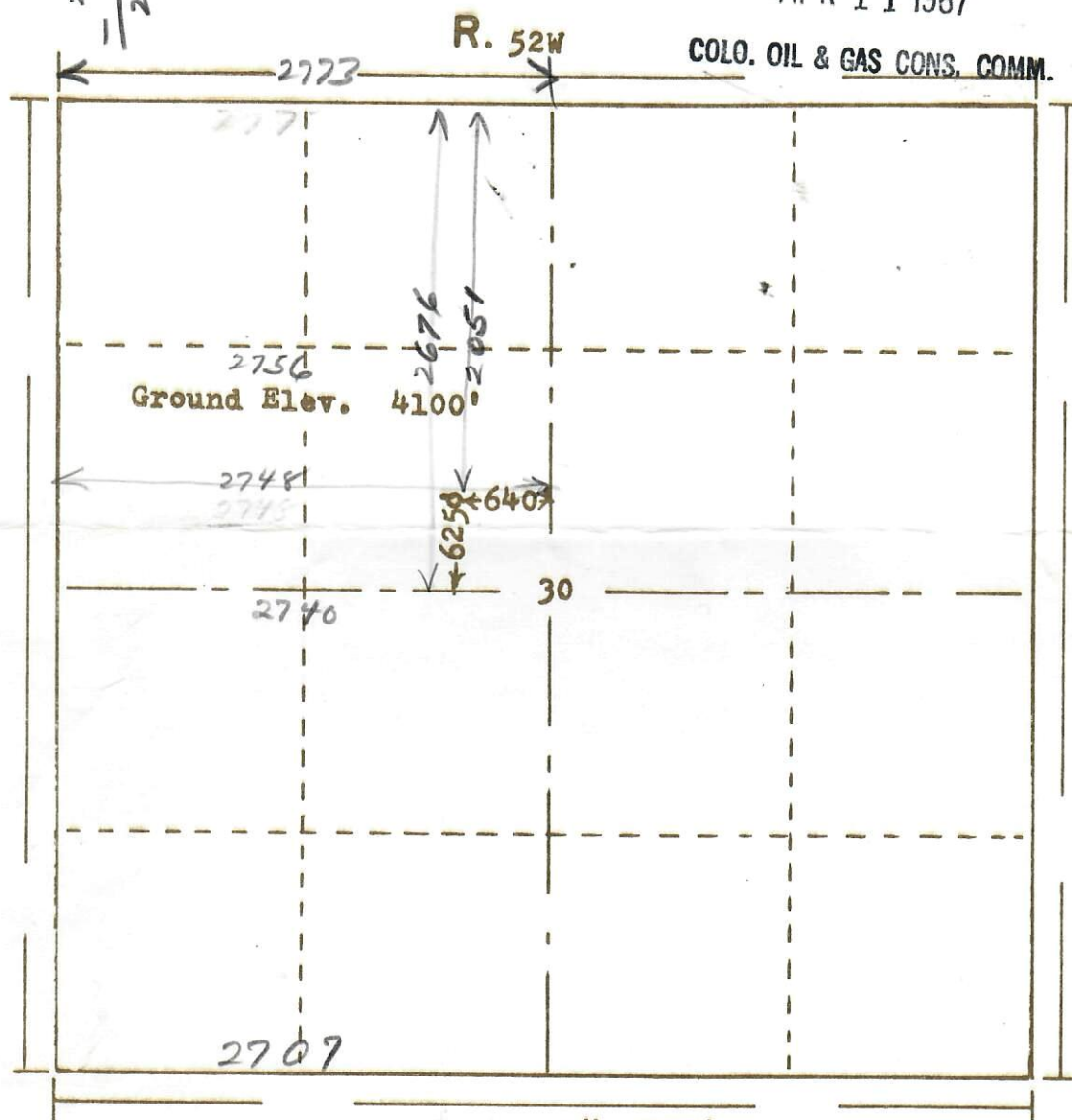


2676
- 625
2051

RECEIVED

APR 11 1967

COLO. OIL & GAS CONS. COMM.



T.
9
N.

2748
- 640
2108

2773
2707
66

2707
33
2740

2773
2740
33
16.5

2740
16
2756

Scale ... 1" = 1000'

Powers Surveyors, Inc. of Denver, Colorado
has in accordance with a request from Mr. Arbuckle
for Kimbark Exploration, Ltd. determined the
Location of No. 1 Hanley
to be 625' FS & 640' FE Section 30 Township 9N
Range of NW 1/4 52W of the 6th Principal Meridian
Logan County, Colorado

I hereby certify that this plat is an
accurate representation of a correct
survey showing the location of

Date: 4-8-67

Billy G. Hollaway
Licensed Land Surveyor No 2853
State of Colorado

66-189