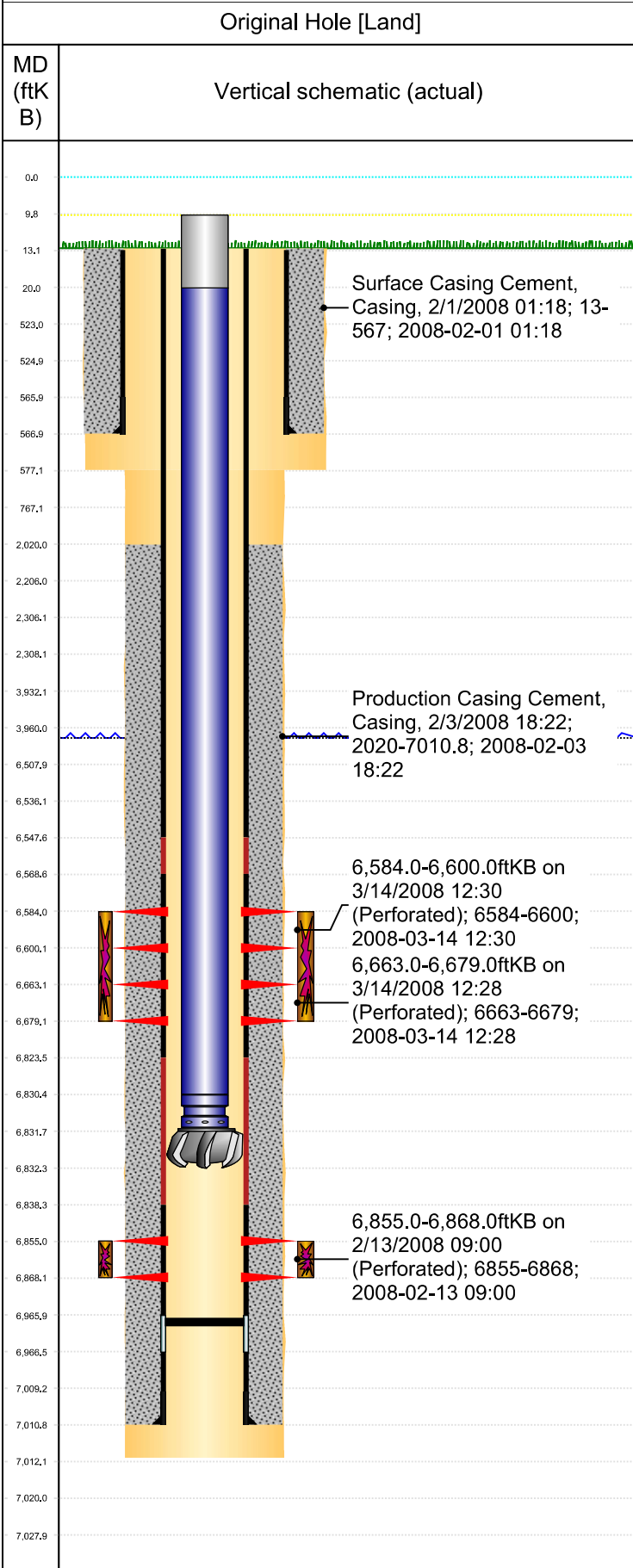




P&A Wellbore For State

Well Name: RYANN STATE C16-25



Well Header									
Surface UWI 0512325399		Business Unit Rockies		Gov Auth Dist		Prod Tree Loc Land			
Orig. KB to Gnd (ft) 13.00		Original Spud Date 1/31/2008		Abandon Date		Well Sub-Status PR		High...	
								N	
Comment									
Surface Location (Congressional)									
Qtr 3 NE	Qtr 4 SW	Section 16	Twonshp 4	Twonsh... N	Range 64	Rng E/... W	Latitude (°) 40.30899606	Longitude (°) -104.559211655	
Wellbore Sections									
Section Des		Hole Size (in)		Top Depth (ftKB)		Btm Depth (ftKB)			
SURFACE		12 1/4		13.0		525.0			
PRODUCTION		7 7/8		525.0		7,020.0			
SURFACE		12 1/4		13.0		577.0			
PRODUCTION		7 7/8		577.0		7,012.0			
Casing Strings									
Csg Des		Run Date		OD (in)	Wt/Len (lb/ft)	Grade	Top Depth (MD) (ftKB)	Set Depth (MD) (ftKB)	
Surface		2/1/2008		8 5/8	24.00	J-55	0.1	567	
Production Casing		2/3/2008		4 1/2	11.60	M-80	0	7010.8	
Cement									
Des		Start Date		Top (ftKB)		Btm (ftKB)			
Surface Casing Cement		2/1/2008		13.0		567.0			
Production Casing Cement		2/3/2008		2,020.0		7,010.8			
Zone Statuses									
Zone Name		Status Date	Status	Fluid Type	Job			Prod Method	
NIOBRARA		3/14/2008	PR		DRILLING/COMPLETION - ORIGINAL, 1/31/2008...				
CODELL		3/14/2008	PR		DRILLING/COMPLETION - ORIGINAL, 1/31/2008...				
Perforation Data									
Linked Zone		Explosive Type	Entered Shot Total	Top (ftKB)	Btm (ftKB)	Date			
NIOBRARA, Original Hole		A	64	6,584.0	6,600.0	3/14/2008			
NIOBRARA, Original Hole		B	64	6,663.0	6,679.0	3/14/2008			
CODELL, Original Hole			52	6,855.0	6,868.0	2/13/2008			
Stim/Frac Stage									
Zone		Start Date		Top (ftKB)		Btm (ftKB)			
NIOBRARA, Original Hole		3/14/2008		6,584.0		6,679.0			
CODELL, Original Hole		3/14/2008		6,855.0		6,868.0			
Other In Hole									
Run Date		Des		Make		OD (in)	Top (ftKB)	Btm (ftKB)	
Logs									
Date		Type				Depth Top (MD) (ftKB)	Btm (ftKB)		
2/11/2008		CBL/CCL/GR				1,910	6,920.0		
Wellbore Plug Back Total Depths									
Date		Type		Com				PBTD (ftKB)	
2/3/2008		FLOAT COLLAR		TOP PLUG				6,966	