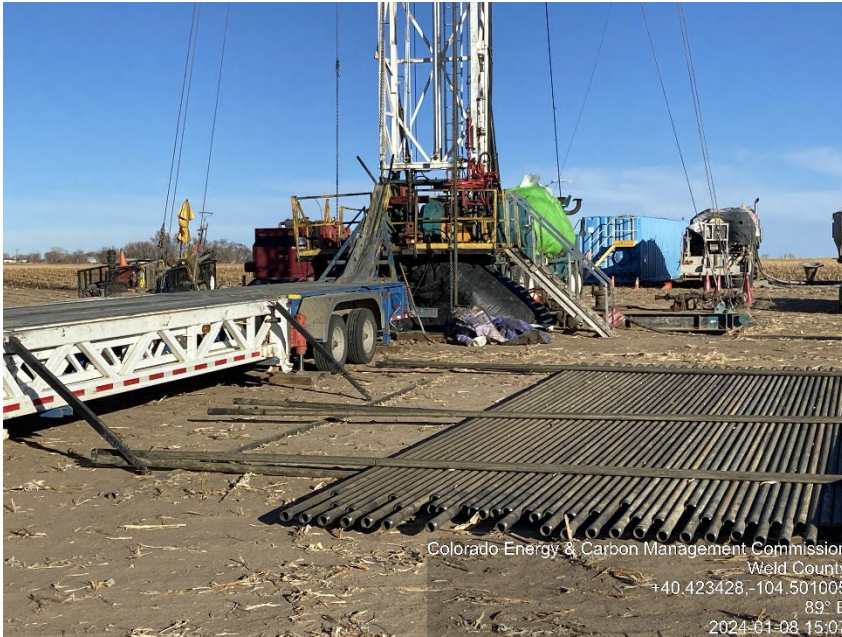


Inspection Photos
Location Name: ROUSE-USX A-66N64W/5NWNW
Location #: 306456



Colorado Energy & Carbon Management Commission
Weld County
+40.423428, -104.501005
89° E
2024-01-08 15:07

Photo #1

Rouse-USX A 5-19 (123-24697) Wellsite
Plugged & Abandoned | PA
Plugging Ops; Suspended: Strong Wind



Colorado Energy & Carbon Management Commission
Weld County
+40.518835, -104.579454
100° E
2024-01-05 13:38

Photo #2

Rouse-USX A 5-19 Wellsite
Plugged & Abandoned | PA
Plugging Ops; Suspended: Strong Wind
Site safety signage
prior photo



Inspection Photos
Location Name: ROUSE-USX A-66N64W/5NWNW
Location #: 306456



Photo #3
Rouse-USX A 5-19 Wellsite
Plugged & Abandoned | PA
Plugging Ops; Suspended: Strong Wind
Wellsite entrance
prior photo

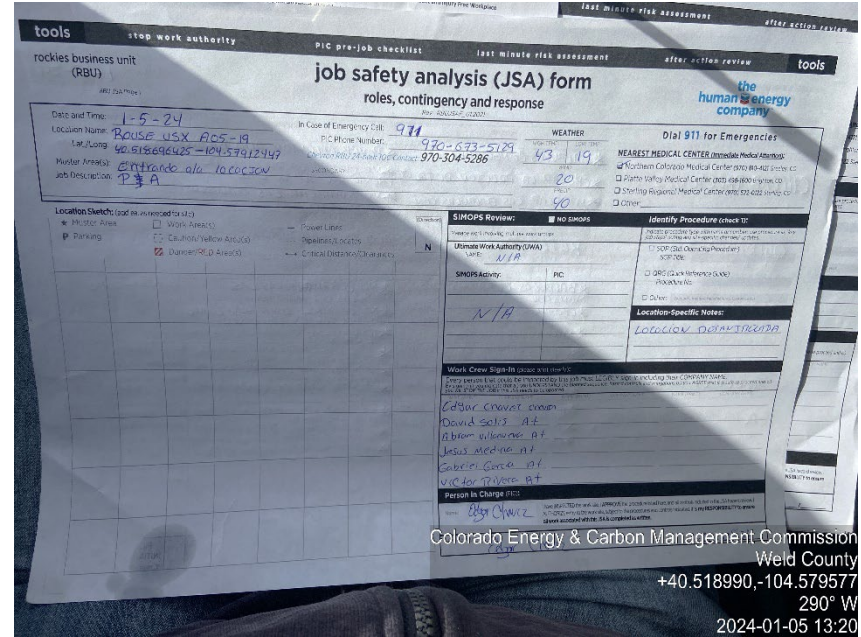


Photo #4
Rouse-USX A 5-19 Wellsite
Plugged & Abandoned | PA
Plugging Ops; Suspended: Strong Wind
JSA: 2024-01-05
prior photo



Inspection Photos

Location Name: ROUSE-USX A-66N64W/5NWNW

Location #: 306456



Photo #5

Rouse-USX A 5-19 Battery site

Plugged & Abandoned | PA

Plugging Ops; Suspended: Strong Wind

Battery sign

prior photo



COLORADO

Energy & Carbon Management
Commission

Department of Natural Resources