

VESSELS 12-30 (05-123-23987): Wellhead Cut/Cap

40.023780, -105.052373
SWNW Sec. 30 T1N, R68W, 6th PM
Erie/Weld County, Colorado
Crestone Peak Resources (10633)



Equipment to be Removed		
Legend	Equipment On-Site	# Pieces of Equipment
1	VESSELS 12-30 (05-123-23987) 40.023780, -105.052373	1

Legend

Site Investigation Points

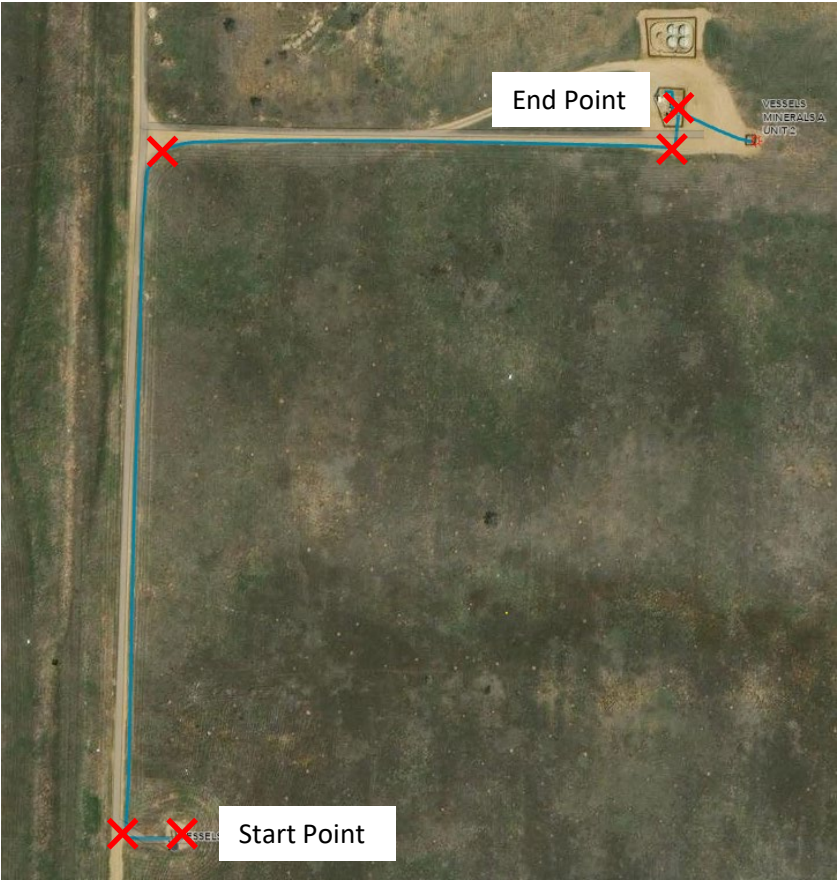
X

Visual Inspection and Soil Sample

VESSELS 12-30 (12323987_FL): Off-Location Flowline Decommission

40.023780, -105.052373
SWNW Sec. 30 T1N, R68W, 6th PM
Erie/Weld County, Colorado
Crestone Peak Resources (10633)

Flowline Unique OperFeatID	Line Type	Start Location	Start Location Latitude	Start Location Longitude	End Location	End Location Latitude (Cut Point)	End Location Longitude (Cut Point)	Approx. Length to Abandon (ft)
12323987_FL	Multiphase	Wellhead	40.023780	-105.052373	Separator	40.026373	-105.050046	1670



Site Investigation Points

✖ Visual Inspection and Soil Sample

Potholes will be dug every 250 feet along the flowline path. These observation points will be photographed and field screened. Additional soil samples will be collected when flowline repairs are observed, changes in flow direction, or when there is a change in the flowline material type.

VESSELS 12-30 (05-123-23987): ¼ Mile Buffer - Wildlife and Hydrology Map

40.023780, -105.052373
SWNW Sec. 30 T1N, R68W, 6th PM
Erie/Weld County, Colorado
Crestone Peak Resources (10633)

