

RECEIVED

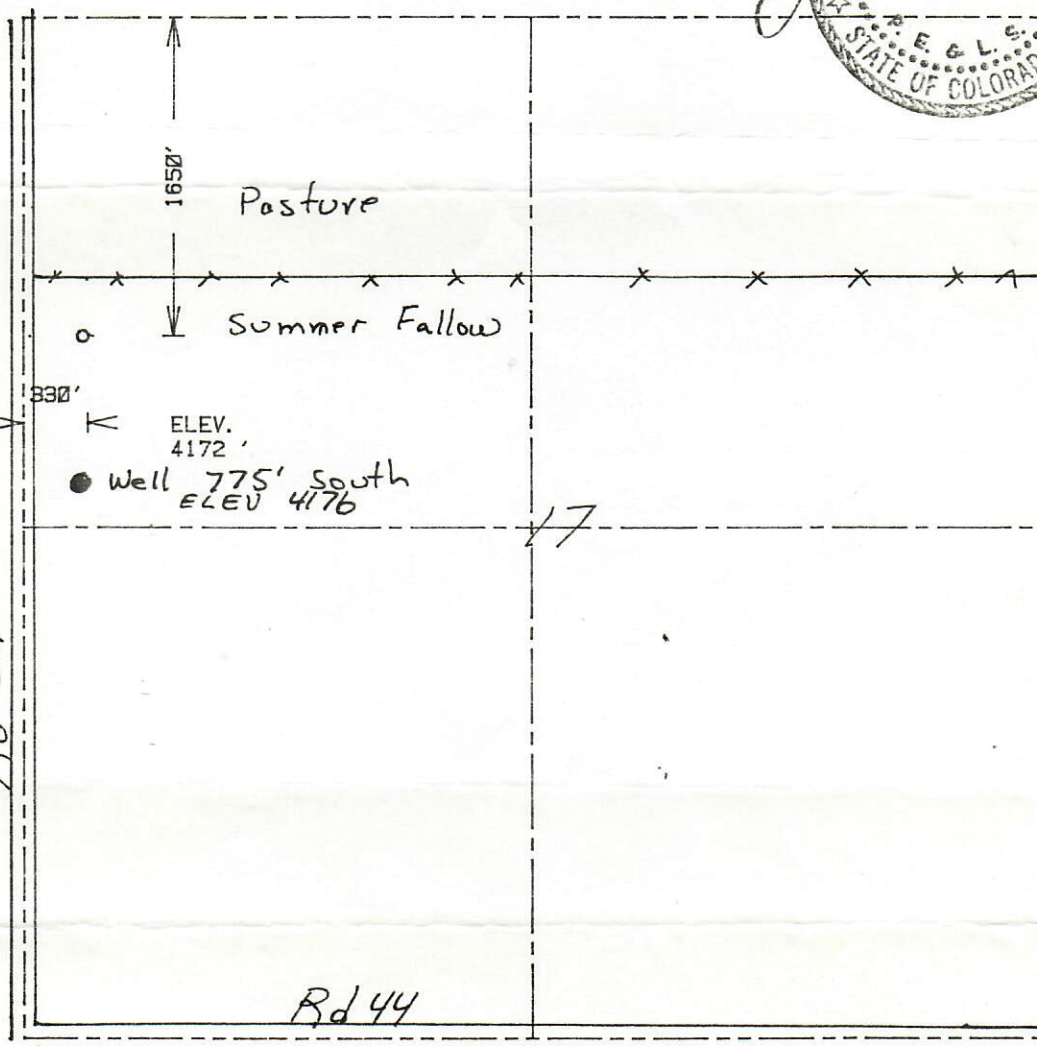
NOV 18 1982

I hereby certify that the accompanying plat is an accurate representation of a correct survey showing the location of a proposed well. The location may be described as a point 1650 feet south of the north line, and 330 feet east of the west line of Section 17, Township 9 N, Range 53 W of the 6th Prime Meridian, LOGAN County, COLORADO. The surface elevation at this point is 4172 feet above M.S.L.

GOLD OIL & GAS CONS. COMM.



From STERLING 5 miles west on Colo 14 to Rd 29, 5 miles north to Rd 38, 1/2 mile west to Rd 27, then 3 1/2 miles north to location Rd 27



SCALE - 1"=1000'

- SURVEYED POINT
- REFERENCE STAKE ( 292 'N, 300 'W)
- NW 1/4 SEC. 17, T 9 N, R 53 W

**ARMON**  
**ENGINEERING**  
**SERVICES**

KIRK LINCH #4-A

SOLAR PETR. %H. B. HERRON

LOGAN CO., COLORADO

27 AUGUST 1982