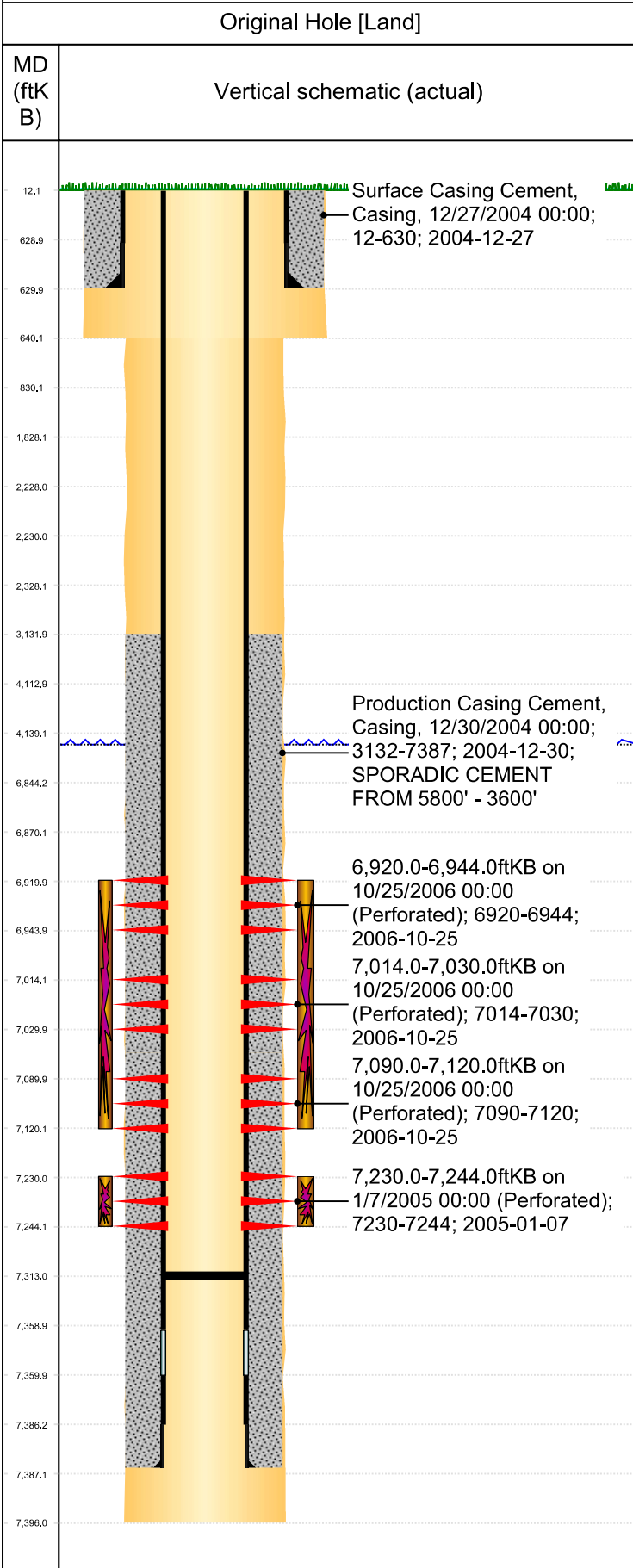




P&A Wellbore For State

Well Name: SCHMIDT 1-26



Well Header									
Surface UWI 0512322540		Business Unit Rockies		Gov Auth Dist		Prod Tree Loc Land			
Orig. KB to Gnd (ft) 12.00		Original Spud Date 12/26/2004		Abandon Date		Well Sub-Status SI		High... N	
Comment									
Surface Location (Congressional)									
Qtr 3 NE	Qtr 4 NE	Section 26	Twonshp 4	Twonsh... N	Range 66	Rng E... W	Latitude (°) 40.2886856	Longitude (°) -104.7365913	
Wellbore Sections									
Section Des		Hole Size (in)		Top Depth (ftKB)		Btm Depth (ftKB)			
SURFACE		12 1/4		12.0		640.0			
PRODUCTION		7 7/8		640.0		7,396.0			
Casing Strings									
Csg Des		Run Date	OD (in)	Wt/Len (lb/ft)	Grade	Top Depth (MD) (ftKB)	Set Depth (MD) (ftKB)		
Surface		12/27/2004	8 5/8	24.00	J-55	12	630		
Production Casing		12/31/2004	4 1/2	11.60	I-80	12	7387		
Cement									
Des				Start Date		Top (ftKB)		Btm (ftKB)	
SURFACE CASING CEMENT				12/27/2004		12.0		630.0	
PRODUCTION CASING CEMENT				12/30/2004		3,132.0		7,387.0	
Zone Statuses									
Zone Name	Status Date	Status	Fluid Type	Job			Prod Method		
NIORARA	4/5/2014	PR	Water				Flowing		
NIORARA	1/19/2015	PR							
CODELL	1/19/2015	PR							
CODELL	5/9/2017	SI							
Perforation Data									
Linked Zone		Explosive Type	Entered Shot Total	Top (ftKB)	Btm (ftKB)	Date			
NIORARA, Original Hole		A	48	6,920.0	6,944.0	10/25/2006			
NIORARA, Original Hole		B	32	7,014.0	7,030.0	10/25/2006			
NIORARA, Original Hole		C	30	7,090.0	7,120.0	10/25/2006			
CODELL, Original Hole			56	7,230.0	7,244.0	1/7/2005			
Stim/Frac Stage									
Zone		Start Date		Top (ftKB)		Btm (ftKB)			
NIORARA, Original Hole		10/25/2006		6,920.0		7,120.0			
CODELL, Original Hole		1/10/2005		7,230.0		7,244.0			
Other In Hole									
Run Date	Des		Make	OD (in)	Top (ftKB)	Btm (ftKB)			
Logs									
Date	Type				Depth Top (MD) (ftKB)	Btm (ftKB)			
12/30/2004	COMPENSATED DENSITY				4,300	7,370.0			
12/30/2004	INDUCTION				630	7,390.0			
1/7/2005	CEMENT BOND				2,944	7,309.0			
12/27/2018	GYRO				12	7,100.0			
Wellbore Plug Back Total Depths									
Date	Type	Com			PBTD (ftKB)				
12/31/2004	FLOAT COLLAR	FLOAT COLLAR			7,359				
1/7/2005	FILL	DEPTH LOGGER ON CBL			7,313				