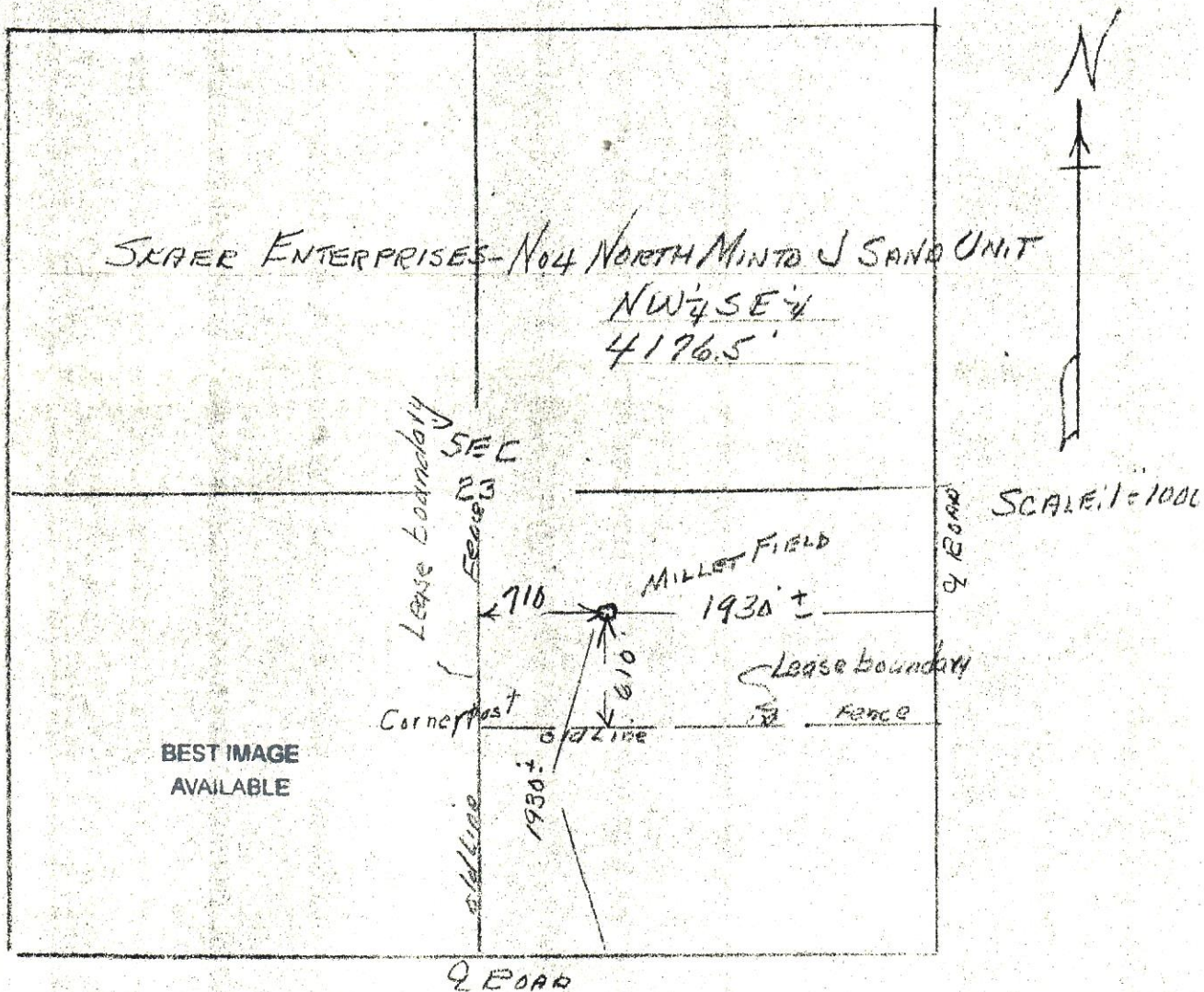




CERTIFICATE OF SURVEY  
for  
Skaer Enterprises  
Logan County, Colorado

T9N R53W 6PM.



I hereby certify that the above plat is an accurate representation of a correct survey showing the location of Skaer Enterprises-NO.4 North Minto J. Sand Unit in NW 1/4 Sec. 23 T9N R53W 6PM. The elevation of the ground at the stake is 4176.5 feet above sea level from U.S.G.S. Bench Mark.

Fort Morgan, Colorado  
July 110, 1989

RECEIVED

Registered Professional Engineer  
State of Colorado

JUL 13 1989

COLO. OIL & GAS CONS. COMM.



well drilled 8/4/89  
& abandoned  
sand absent when  
drilled.  
never completed  
as injector

ELS

BEST IMAGE  
AVAILABLE

RECEIVED

NO. 0.01 & GAS COMS COMA